

2010

# Janitza.

Janitza electronics

Janitza

8%

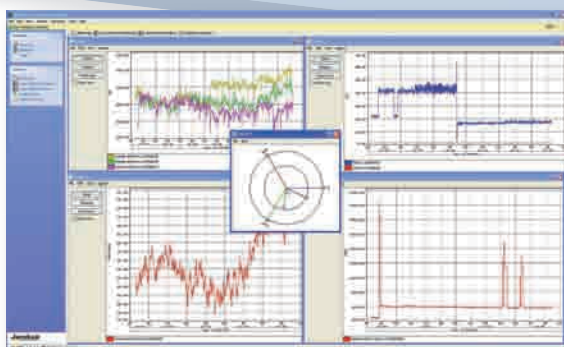
2010

EN16001 EN50160.

*high-end* !

## UMG 104 -

- DIN
- 800
- 8 V/I (20 / )
- : RS 232 RS 485
- : Modbus Profibus
- (V, I, P, Q) 40
- 2
- IT TN
- 8 (4 x 4 x )



- 6
- DIN 35

CD

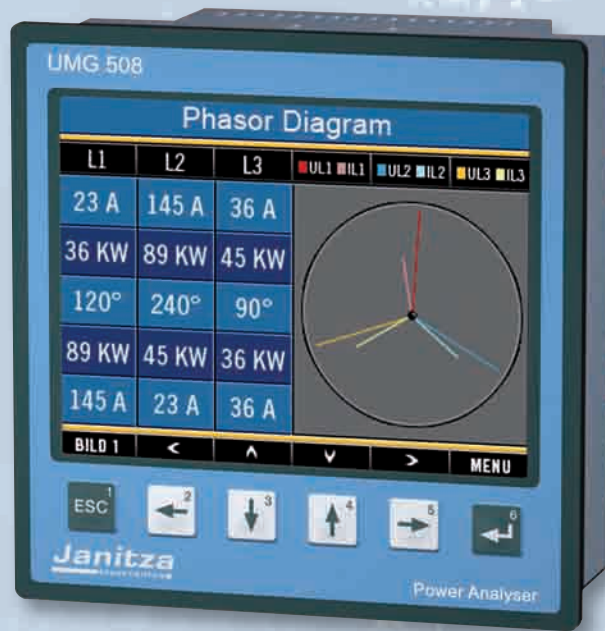
GridVis

- GridVis:

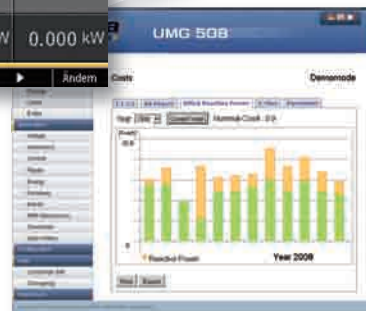
- : 0.5
- 800 !

# UMG 508 -

- 144 x 144
- 800
- 8
- U/I (20 / )
- Ethernet + gateway, email, homepage
- 256 MB
- Modbus, Profibus, TCP / IP, BACnet, NTP, FTP, SNMP, DHCP ...
- (50 µs) (10 ms)
- (V, I, P, Q) 40
- ( 7 )
- 8 5
- ( 64 )



Real Power			
	Messwert	Mittelwert	Maximum
L1-N	-0.000 kW	-0.000 kW	0.000 kW
L2-N	-0.006 kW	-0.006 kW	-0.004 kW
L3-N	-0.006 kW	0.000 kW	0.000 kW
L4-N	0.000 kW	0.000 kW	0.000 kW



CD

GridVis

- GridVis:

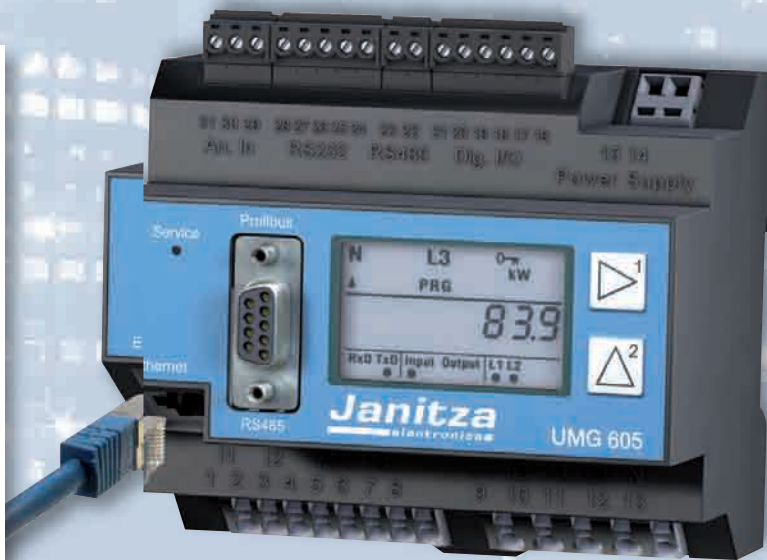
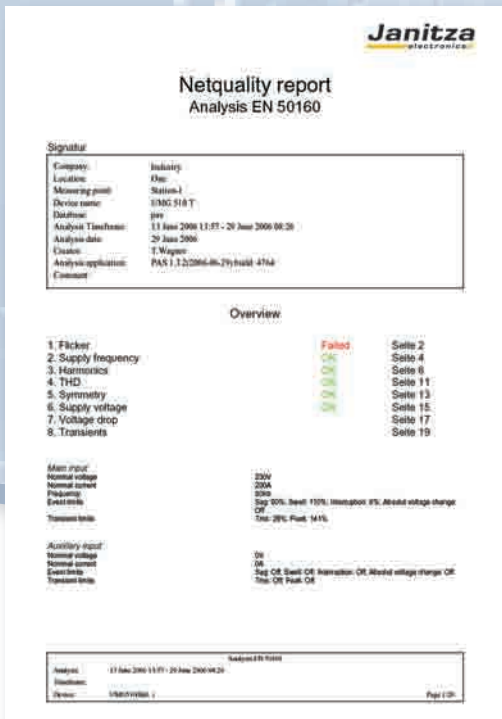
Ethernet

WEB-

C

# UMG 605 ...

- Gateway, Email, homepage
- 128 MB
- Modbus, Profibus, TCP / IP, BACnet, NTP, FTP, SNMP, DHCP ...
- (50) (10)
- (V, I, P, Q) 63
- (7)
- 2 2
- (64)



- EN50160, EN61000-2-4 ...
- EN61000-4-15
- 8
- : 0.5
- 2000 !

CD

GridVis

- GridVis:

# UMG 511 -

A ...

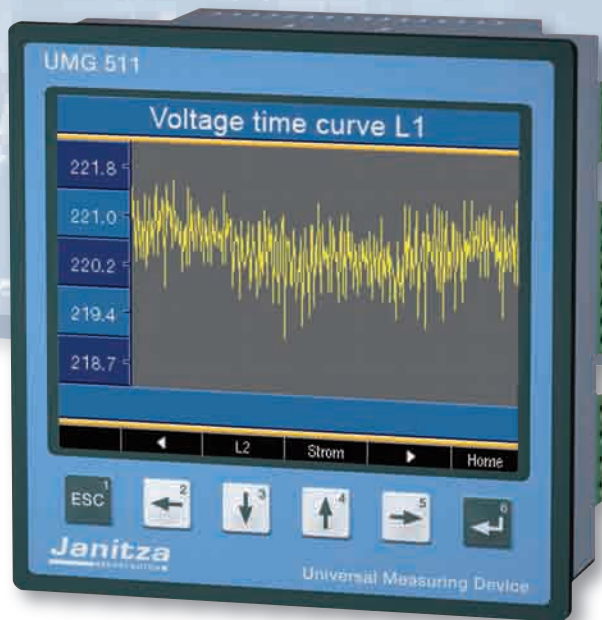
- A -
- 2000
- 8 V/I
- (20 / )
- Ethernet + gateway, email, homepage
- - 256 MB
- Modbus, Profibus, TCP / IP, BACnet, NTP, FTP, SNMP, DHCP ...
- (50 )
- (V, I, P, Q) 63
- ( 7 )
- 8 5
- ( 64 )

144x144



(10 )

- 8
- 2000
- : 0.2
- !



- EN61000-4-30
- EN50160,
- EN61000-2-4 ...
- EN61000-4-15
- !



CD

GridVis

- GridVis:

C

# GridVis



UMG

E-mail



- EN61000-2-4
- 
- 

EN50160



- CSV (Excel)
- SQL database
- PDF / HTML /
- OPC
- 



( Modbus)



- FTP
- Web-
-

	UMG 104	UMG 508	UMG 605	UMG 511
L-L AC	480 V AC	720 V AC	480 V AC	720 V AC
	95...240 V AC	95...240 V AC	95...240 V AC	95...240 V AC
	50...110 V AC	44...130 V AC	50...110 V AC	44...130 V AC
	20...55 V AC	20...50 V AC	20...55 V AC	20...50 V AC
	300 V CAT III	500 V CAT III	300 V CAT III	600 V CAT III
	4 MB	256 MB	128 MB	256 MB
	–			
	–	Jasic (7 )	Jasic (7 )	Jasic (7 )
	2	8	2	8
	2	5	2	5
	1	–	1	–
	20 kHz	20 kHz	20 kHz	20 kHz
	> 800	> 800	> 2000	> 2000
( , ...)	8	8	8	8
	0.5S	0.2S	0.5S	0.2S
/ (+/-)	0.2 / 0.2 %	0.1 / 0.2 %	0.2 / 0.2 %	0.1 / 0.2 %
A EN61000-4-30	–	–	–	–
	40-	40-	63-	63-
THD-U/THD-I				
	–	–		
	–			
	–			
RS 232		–		–
RS 485				
Profibus DPV0, Modbus RTU				
Ethernet 10/100 Base-TX	–			
BACnet	–			
Modbus TCP, Modbus over TCP	–			
Modbus / Ethernet Gateway	–			
HTTP (Homepage)	–			



Janitza electronics GmbH  
Vor dem Polstuck 1  
D-35633 Lahnau  
Germany  
Tel.: 0049 6441 9642-0  
Fax: 0049 6441 9642-30  
info@janitza.com  
www.janitza.com

.: (495) 636-1411  
: (495) 636-1411  
sokolov.janitza@yandex.ru  
www.janitza-russia.ru

