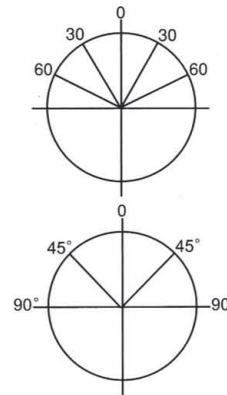
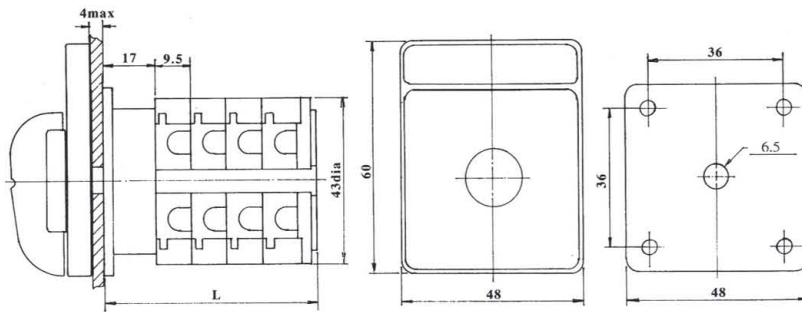


CAM SWITCHES 20A, 32A, 63A

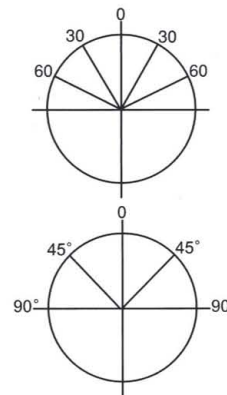
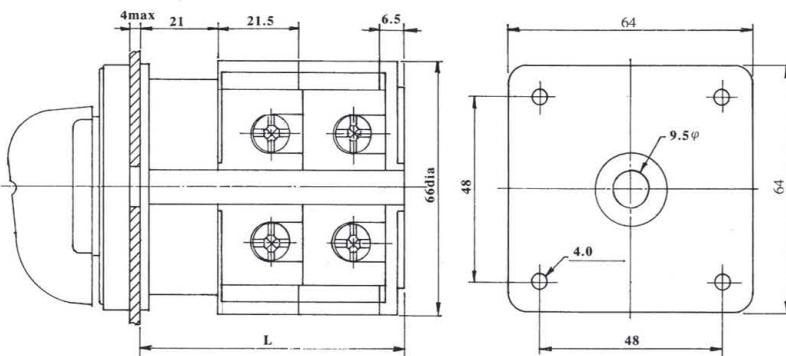


Dimensions mounting for 20A A2, R2, switches Switches position



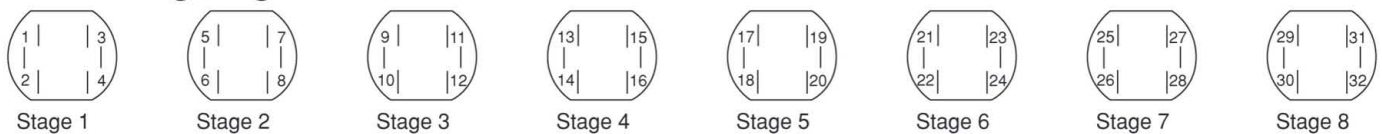
Total Number of stage	1	2	3	4	5	6	7	8
Length L	31.5	41	50.5	60	69.5	79	88.5	98

Dimensions mounting for A3, A4, A6 switches (32A, 40A, 63A)



Total Number of stage	1	2	3	4	5	6
Length L	49	70.5	50.5	113.5	135	156.5

connecting diagram



Specification

		Switch models				A2	A3	A4	A6
Selection data						R2			
AC1	Resistive or low inductive loads	660V				20A	32A	40A	63A
AC21	Switching of resistive loads IEC / VDE / BS					20A	25A	32A	40A
AC22	Switching of Combine resistive or low inductive loads	600V				20A	32A	40A	63A
AC11	Switching of control devices contactors	200V 380V / 440V				6A 4A	14A 6A	16A 7A	- -
Thermal current Ith VDE 0660		660V				25A	40A	63A	80A

Motor rating	Confirms to IEC/VDE/BS	A20	A30	A40	A60					A20	A30	A40	A60	
AC3 DOL Starting	3Phase	220V	3Kw	5.5Kw	7.5Kw	11Kw	3Phase	120v	1.5HP	2HP	5HP	7.5HP		
		380 / 440V	5.5Kw	5.5KW	15Kw	18.5Kw		240v	3HP	5HP	10HP	15HP		
		500V	5.5Kw	5.5Kw	15Kw	18.5Kw		480V	5Hp	10Hp	20Hp	25Hp		
		600V	5.5Kw	5.5Kw	15Kw	18.5Kw		1Phase	120V	0.5Hp	1Hp	3Hp	3Hp	
AC4 DOL Starting reversing, inching	3Phase	220V	1.5Kw	2.7Kw	3.7Kw	5.5Kw	3Phase	240V	1Hp	2Hp	7.5Hp	7.5Hp		
		380 / 440V	3Kw	5.5Kw	6Kw	7.5Kw		120V	0.5Hp	1Hp	2Hp	3Hp		
								240V	1Hp	2Hp	3Hp	5Hp		
								480V	2Hp	5Hp	10Hp	15Hp		