

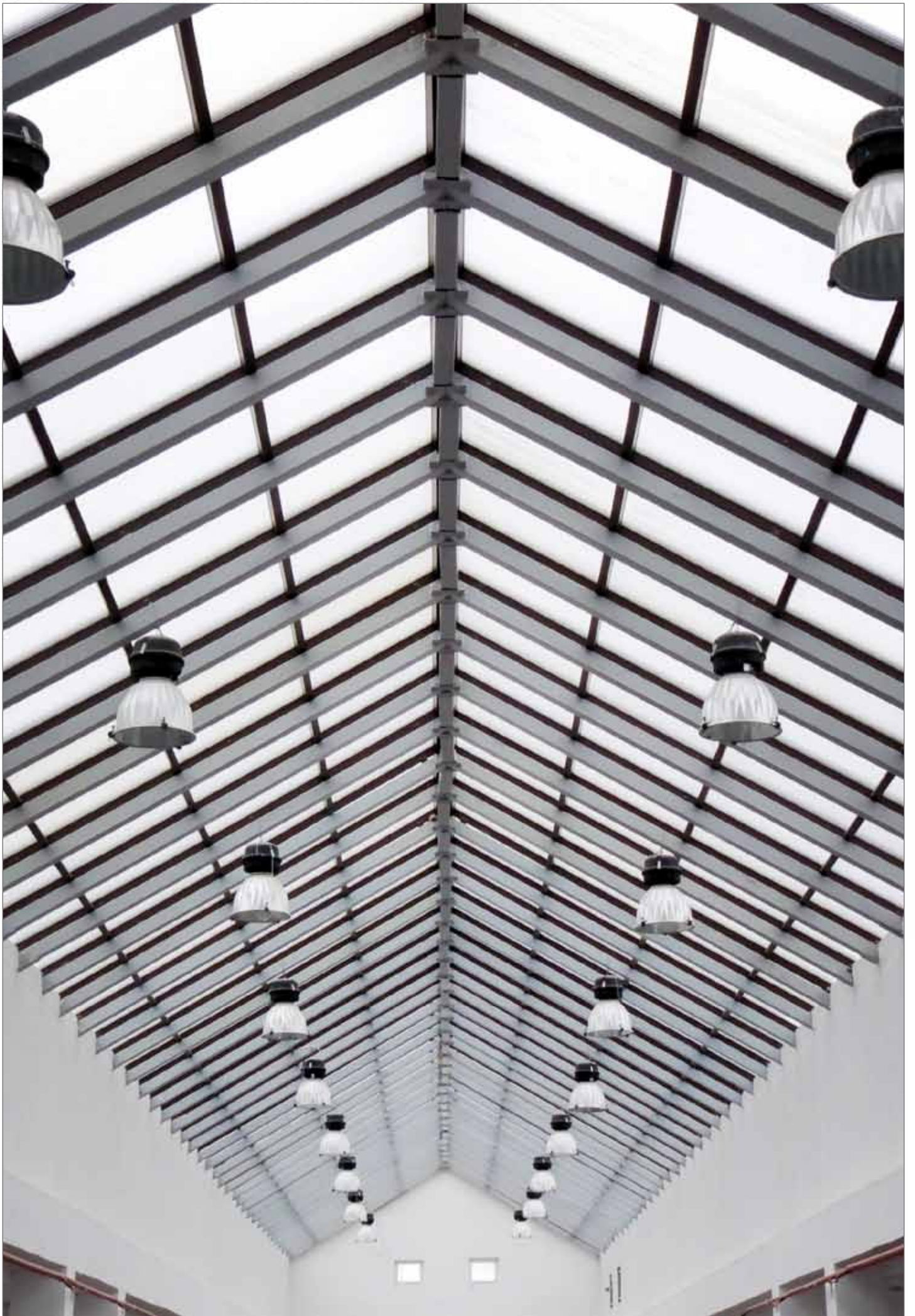


FAIR  
HIGH  
LIGHTS  
2012

Lampholders and connectors for professional industrial lighting  
Broaden your horizon and connect with BJB



Your Connection to Light



# Our selection for applications in the industrial lighting field.

In terms of lighting solutions, the industrial and commercial sectors have a particularly wide range of requirements. Numerous factors from environmental regulations and legal requirements to economic considerations have to be analysed and taken into account during planning and installation. Depending on the circumstances, the options most often considered for professional industrial lighting applications are fluores-

cent lamps or HID systems. As in many other fields, however, LED solutions are also being seen in increasing numbers here. Examples are emergency and orientation lighting. For all technologies, BJB supplies lampholders and connection technology which incorporate our experience gained through decades of research and development work. Each component has to meet the highest re-

quirements, whether in terms of material durability, corrosion resistance, electrical contact, or handling during installation or insertion of the light source. This brochure presents the many different products and technologies which BJB supplies in this field. All further information can be found at [www.bjb.com](http://www.bjb.com).

## Lampholders for PGZ18/PGZX18 base

With tried and tested twist & lock technology for a firm fit and an innovative contact system which ensures a secure electrical connection in all situations. PGZX18 lamps are intended for use as "protected" lamps in luminaires without additional protective glass covers.



PGZX18  
25.716



PGZ18  
25.715



NEW

# For industrial lighting applications - LED

## LED

### Connectors for STARboards

So-called "STARboards" were among the first "power-LEDs" to be used in the field of general lighting. At BJB we started developing connectors for these at a very early stage, providing a solderless system of contact and an easy method of attachment. A clip-on lens holder extends the possibilities for light control. We currently supply these connectors for STARboards from almost all manufacturers. A particularly important application at present is in emergency lighting.



## LED connectors

BJB supplies high-quality connectors for almost all chip-on-board modules from well-known manufacturers. Whether from Bridgelux, Cree, Citizen, Nichia or many other suppliers, our range offers numerous solutions for your applications. The major advantage: Only this technology enables light sources to be exchanged easily at a later date without the need for soldering. The two 47.315 examples for Citizen products show this design principle and clearly illustrate its advantages.



LED-C-LINE



LED-C-LINE

## LED & ADS

LED components from BJB are almost always ADS-compatible. Like all other components, they can be wired automatically with ADS systems.

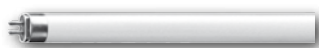
# Was good, is good, will remain good.

### G5 fluorescent lampholders

The same can be said for this series as for G13: There is nothing that it can't offer. On the contrary: We have also developed the rotation aid for applications with particularly slim and delicate housings. Anyone who has tried to insert a T5 tube into such a light fixture with his fingers will definitely appreciate this BJB solution.



e.g. lampholder series  
G5  
26.641

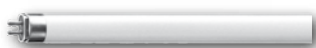


### G13 fluorescent lampholders

In this product range, we supply every conceivable version: push-in, push-through, end-fixing or twin lampholders and accessories. The phrase "There's no such thing as can't do" really applies in this case.



e.g. lampholder series  
G13  
26.290



### G12 lampholders for discharge lamps

Our compilation of examples should definitely also include the 25.731 lampholder series for metal halide lamps with its ceramic/mica housings, robust retaining springs and secure contacting.



G12  
25.731





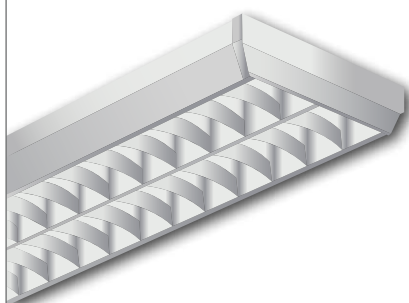
# Light all the way down the line.

## Lampholder system for non-retrofit LED tubes

Developed in cooperation with Toshiba Lighting Systems to meet demanding Japanese standards. The lampholder pair 28.201/202 for the GX16t-5 base is therefore suitable for innovative systems now being offered by numerous manufacturers such as Panasonic, Toshiba, Rohm, Civilight, Koyo, Mitsubishi-Osram, Sanken and Optotech. The BJB system can be easily integrated into existing luminaire designs.



LED  LINE



## LED & ADS

LED components from BJB are almost always ADS-compatible. Like all other components, they can be wired automatically with ADS systems.

These and further documents can be found  
at [www.bjb.com/downloads](http://www.bjb.com/downloads)



BJB Catalogue



LED Catalogue



[www.bjb-automation.com](http://www.bjb-automation.com)



[www.bjb.com](http://www.bjb.com)



BJB-Automation



BJB GmbH & Co. KG · Werler Str. 1 · 59755 Arnsberg · Germany  
Telephone +49 2932 982-0 · Fax +49 2932 982-8201  
[info@bjb.com](mailto:info@bjb.com) · [www.bjb.com](http://www.bjb.com)

  
Your Connection to Light