



# Thermal Imaging Camera

Industry temperature measurement

## DL700E+

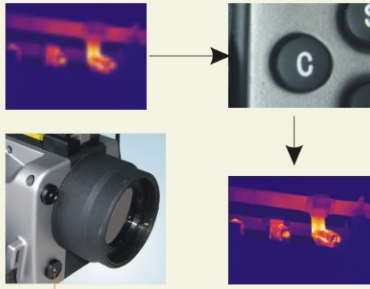
384x288 uncooled FPA detector

Auto focus, dual storage, full screen CCD



[www.dali-tech.com](http://www.dali-tech.com)

# DL700E+ Thermal Imaging Camera



CCD Camera

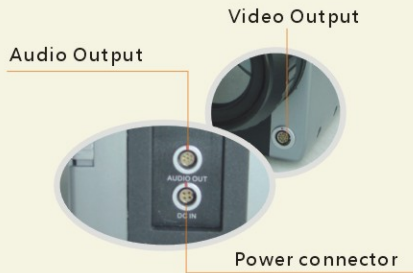
Auto focus



One button operation



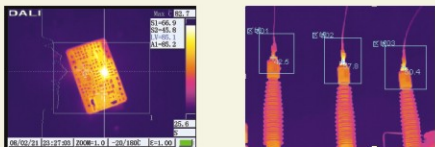
Optional LCD remote units



Audio Output

Video Output

Power connector



Line measurement

Area measurement



Optional Lenses

DL700E+ offers outstanding image quality and temperature measurement performance in an affordable, rugged and easy to use infrared camera. It works as a professional tool effective in different applications such as power plant, petro chemicals, scientific research, fire fighting, and building inspection, metallurgy, etc.



## Parameter

Item	DL700E+		
Detector characteristics	Detector type	Uncooled FPA microbolometer	
	Array size/format	384×288	
Image characteristics	Field of view/min focus distance	16°×12°/0.5m	
	Spatial resolution ( IFOV )	0.88mrad	
	Thermal sensitivity	≤0.06°C@30°C	
	Framerate	50/60Hz	
	Focus	Auto/electronic focus	
	Electronic zoom	1- 8X continuous	
	Spectral range	8- 14μm	
Image display	Built-in visual camera	300,000 pixels, Pic. in Pic. or full	
	Viewfinder	Built-in high-resolution color LCD	
Measurement	LCD	High-resolution color LCD, 640×480	
	Temperature ranges	-20°C- +600°C, optional up to +1200°C	
	Accuracy	± 2 °C or ± 2% of reading, Whichever is greater	
	Measurement correction	Automatic/manual	
	Measurement mode	Up to 10 movable spots. Up to 5 movable areas (maximum, minimum and average temperatures). Line profile. Isotherm. Temperature difference. Alarm(voice, color)	
	Color palette	9 palettes changeable (Iron, Rainbow, Grey and Grey inverted, etc.)	
	Image adjustment	Auto/manual gain and brightness	
	Setup functions	Date/time, temperature unit, language	
	Emissivity correction	Variable from 0.01 to 1.0 or select from listings in pre-defined material list	
	Ambient temperature correction	Automatic corrections according to user input	
	Atmospheric transmission correction	Automatic correction according to user input object distance, relative humidity , ambient temperature	
	Image storage	Storage card	Built-in flash memory, CF card (1G), Up to 4000 images
		Storage mode	Automatic/manual single image saving
File format-thermal		JPEG, 14 bit thermal image with measurement data	
File format-visual		JPEG or linked with corresponding thermal image(Pic. in Pic.)	
Voice annotation		Input via built-in microphone Up to 40 seconds of digital voice per image stored with image	
Laser pointer	Image improvement	Averaging(S2, S4, S8, S16), Spatial filter	
	Laser pointer	Class 2, 1mw/635nm(red)	
Power supply	Battery type	Li-Ion, rechargeable	
	Battery operating time	2 hours continuous operation	
	Charging system	Intelligent charger or power supply adaptor(optional) online charge	
	Power saving	YES	
	External power	10-15V DC	
Environment	Operating temperature	-15°C- +50°C	
	Humidity	≤90%non-condensing	
	Encapsulation	IP54	
Physical characteristics	Weight	1.69Kg	
	Dimensions	305mm×130mm×135mm	
	External DC input	Yes	
Interface	Audio output	Yes	
	Video output	PAL/NTSC/ VGA	
	USB	Image (thermal and visual), measurement data and voice transfer to PC	

▲ The information contained in this document is subject to change without notice