



EMERSON[™]
Industrial Automation

Affinity

Dedicated HVAC/R Drive
for Building Automation

1.1kW to 132kW (1.5hp to 200hp)
200V / 400V / 575V / 690V

IP20 (NEMA 1) and IP54 (NEMA 12)



**CONTROL
TECHNIQUES**

www.controltechniques.com

Affinity – A dedicated HVAC/R drive

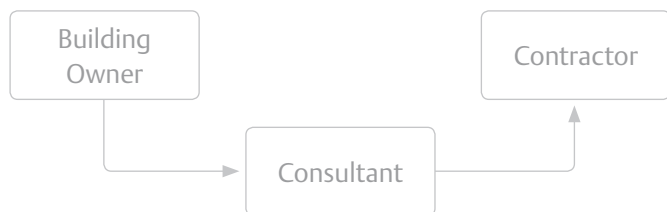
Affinity is Control Techniques' dedicated HVAC/R drive, designed specifically to meet the needs of consultants, contractors and owners of commercial buildings. A comprehensive product line incorporates special drive functionality and accessories to simply and efficiently solve your HVAC/R applications.

Drive for a sustainable future

Affinity addresses the challenges for both today and the coming years. It is created with more than 30 years of drives experience and based on new research that considered the current and future issues and trends in the HVAC/R industry. Affinity incorporates the features you need to be at the forefront of building technology in relation to sustainability, reliability, communications and performance.

Deliver on time and within budget every time

Our global support network provides you with assistance through each project phase. We understand the processes and challenges you face in specifying, purchasing and delivering HVAC/R projects, and will provide you with the information, support and services that ensure you can deliver fully optimised solutions on time and within budget.



It is good to know that wherever the project is, we will be supported by knowledgeable people who understand our needs and our technology



IP54
(NEMA 12)
Affinity

Helping you to save energy, day after day

Affinity allows you to minimise wasted energy throughout your buildings by optimising the pump or fan speed to match the environmental conditions within the building. This helps to reduce your energy costs and your carbon footprint. Software tools help to analyse the potential energy savings and can provide the justification to make the capital investment with a known payback period.

We need to reduce costs and our carbon footprint



Certificate No. EHS 64466

003

Certificate No. Q 05176

003

E171230



Affinity features

Size 1 IP20 (NEMA 1) drive

Size 1 IP54 (NEMA 12) drive



Integral keypad -
multilanguage LCD
keypad with plain text

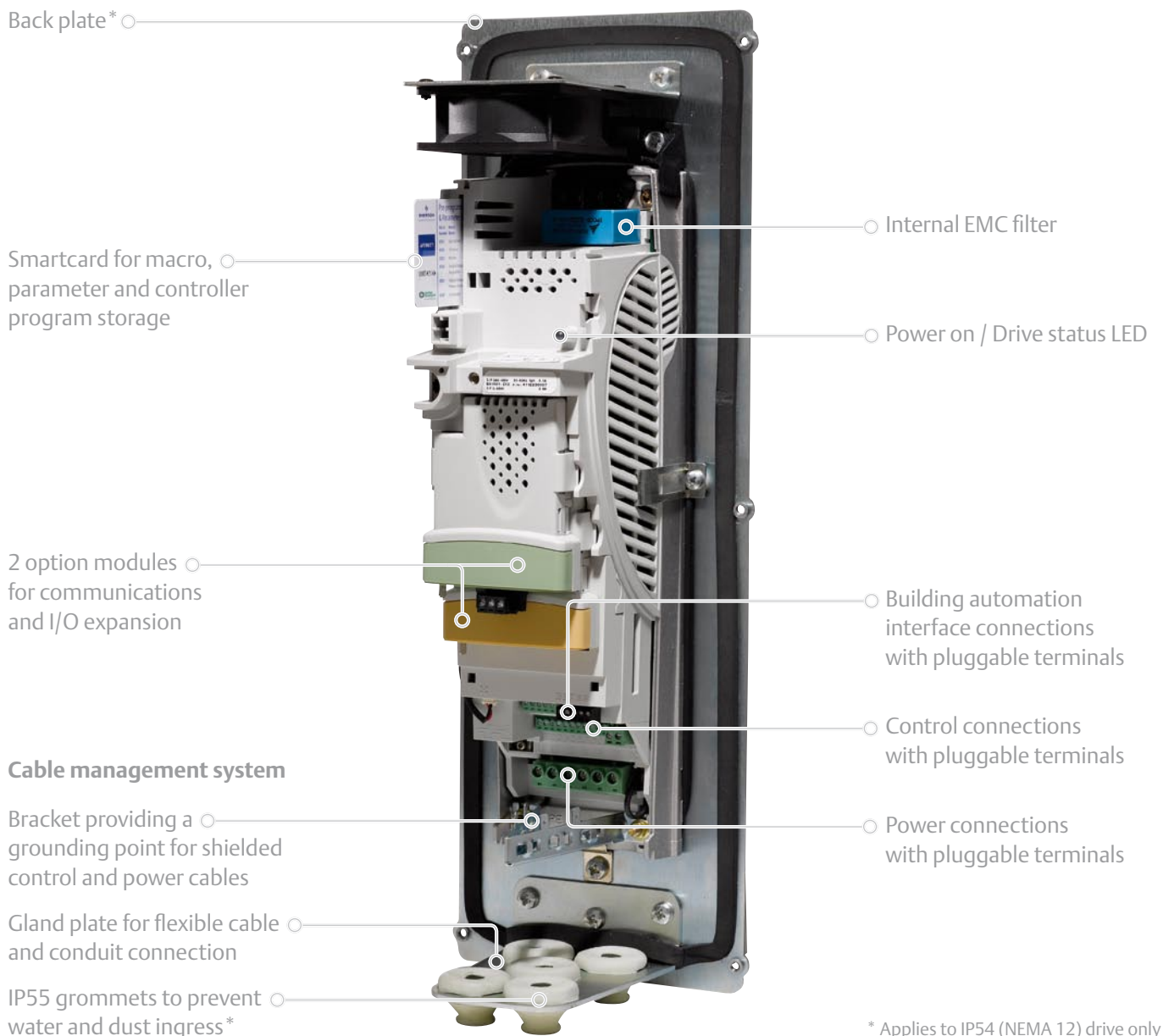
Standard terminal cover

Top sealing cover








Size 1 IP54 (NEMA 12) drive with cover removed



* Applies to IP54 (NEMA 12) drive only

A complete HVAC/R solution

Affinity includes all of the features you would expect from a dedicated HVAC/R drive, plus more:

- Fire Mode for building occupant safety
- Two independent PID controllers can, for example, control dampers or valve actuators to eliminate external equipment
- Free software tools for
 - Energy saving calculations
 - Harmonic analysis
 - Commissioning and monitoring
- Onboard controller with real-time clock, ideal for reducing costs and improving performance in standalone applications and OEM solutions
- Sleep / wake mode automatically switches off a fan or pump when demand drops below a threshold for a certain time
- Motor pre-heat to prevent condensation
- Low load detection to sense mechanical problems such as a broken drive belt
- All Affinity models have integrated reactors to control supply harmonics. This saves space and cabling costs
- High switching frequency up to 16kHz for quiet motor operation
- Smartcard data storage
 - Specific macros for simplifying set up of common HVAC/R applications
 - Easy back up and copying of drive configuration
- Integrated network connectivity
 - BACnet 
 - Metasys N2
 - Modbus RTU
- Optional connectivity, through click-in option modules
 - LonWorks 
 - Ethernet 
 - Additional I/O
- Pluggable terminals for simple installation and maintenance

Intelligent Thermal Management

Affinity uses an Intelligent Thermal Management system (ITM) to monitor the temperature of its internal components. In high ambient temperatures the drive automatically adjusts the output to maintain system operation whilst ensuring drive reliability.

I want to know that when the system is required to operate beyond the design limits, the drive will continue to perform



IP20 (NEMA 1)
size 1 Affinity

Specifying HVAC/R drives

Specify, fit and forget

Affinity is available in 6 frame sizes with both IP20 (NEMA 1) and IP54 (NEMA 12) models. It operates with standard global power supplies from 200V through to 690V. The base technology for Affinity is already proven in commercial and industrial applications around the world.



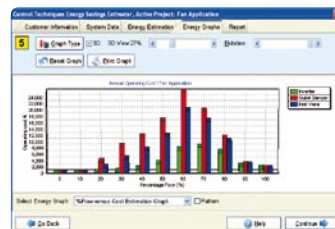
At the end of one project, I need to be able to move on to the next. I cannot afford to spend time supporting projects that we have already been paid for

We will help you to specify the drives, put forward the commercial arguments and ensure the drive system complies with regulations for energy efficiency, harmonics and EMC.

- The standard documentation and our online resources provide the information you need to specify Affinity drives in most HVAC/R applications

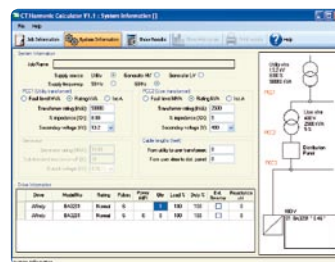
- **CT Energy Savings Estimator**

Energy optimising software helps you to calculate the commercial arguments for pay-back periods



- **CT Harmonic Calculator**

Supply harmonics calculator will help you to economically meet the required standards for your installation



- For any questions, our drive experts are on hand to provide you with their experience and knowledge

Getting access to key people and information on time can be critical to the success of a project



Integration with your Building Management System

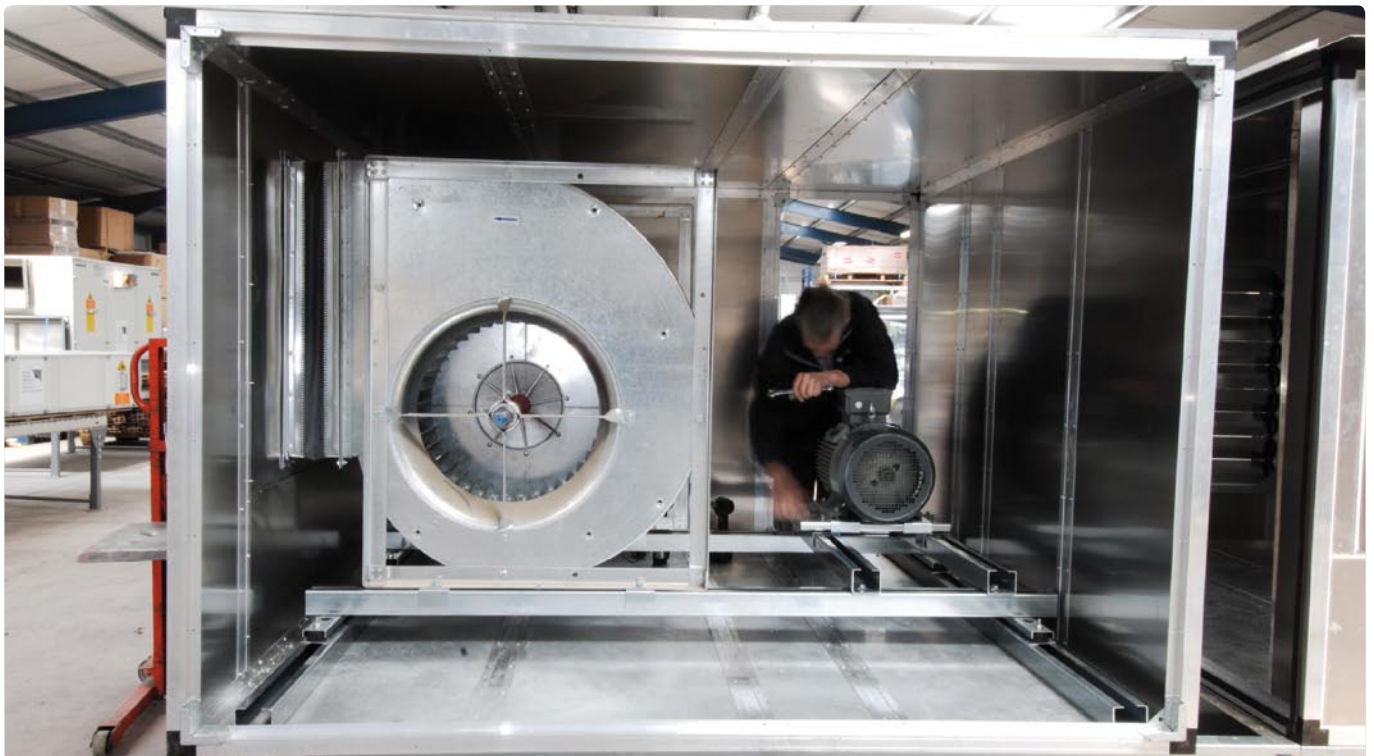
Affinity has all the communications capability you need. Protocols integrated as standard include, BACnet, Metasys N2, and Modbus RTU. Click-in option modules allow specialised communication such as LonWorks and Ethernet to be used.

If the drives cannot integrate with our Building Management System, then we really have no use for them

Flexibility without a Building Management System

For system redundancy or for smaller applications without a Building Management System, Affinity offers the possibility of using the onboard Logic and PID controllers, real time clock and flexible I/O. The system is easy to configure, is able to cope with any Building Automation problem and requires no additional space or external components.

It would be great to have some level of redundancy so that if the Building Management System failed the key equipment continued to operate autonomously



Installing and commissioning HVAC/R systems

Affinity is quick and easy to set-up. The drive's HVAC/R features may be configured using a multilingual keypad, Smartcard, or the supplied commissioning software that guides the user through the configuration process.

At the end of a big project the pressure is on and our window for installation and commissioning often gets squeezed. We need to be able to get in there, get it working and get out

Simple and intuitive

The Affinity keypad is a simple, intuitive plain language interface for configuring and maintaining the drive. There are no confusing switches or soft keys, only the functions needed to get the job done simply and quickly, with a help button in case more information is required.

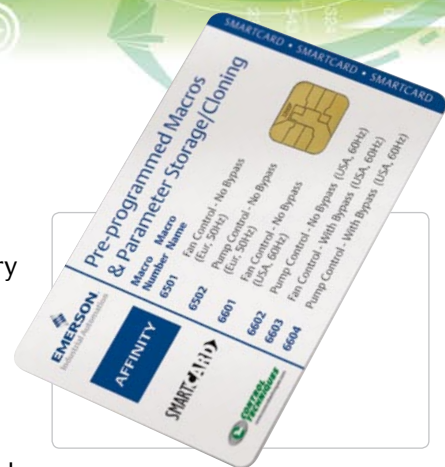
I just want a simple interface that helps me to get the drive running, and allows me to monitor its performance



Smart start-up

To further assist in maintenance and commissioning, every drive is supplied with a Smartcard; this is a credit card sized data storage device that can quickly download

pre-programmed application macros (parameter sets) to the drive or backup and copy settings from one drive to another. Simply insert the Smartcard into the drive and using the keypad, select the appropriate macro for your application. A Macro Guide is included with the drive.



Flexibility to change specification

Affinity HVAC/R macros and option modules allow you to adapt key drive functionality at any time to meet changing project needs. Option modules for connectivity and I/O are simply clicked into position under the drive cover, requiring no additional space.

Occasionally we need to change the way something works during or after the installation, it would be so much better if this could be done without having to remove the equipment

Easy performance tuning

Autotune features help you to get the best performance by measuring the motor and machine attributes and automatically optimising control parameters to maximise energy efficiency.

There are some applications you see over and over again, the features to solve these need to be standard in a dedicated HVAC/R drive



IP20 (NEMA 1) Affinity range

Compact size

Affinity has been designed using advanced thermal modelling techniques to ensure that performance is achieved with the most compact dimensions. Larger drives are built on a rigid SMC chassis, which further reduces the dimensions and weight making them exceptionally easy to handle and install.

Size is important. Space taken up by control equipment is space that cannot be utilised or rented

Training

Our training centres located around the world are focused on providing training and resources to ensure you and your team can deal with every drive application.

We need to be able to get the drives running quickly, every time. Training is critical

Living with HVAC/R systems

Once installed, Affinity drives require minimal maintenance. You can expect the drive to give years of reliable service, ensuring the comfort and well being of the building occupants. However, should anything go wrong, our engineers are on hand to provide advice, support and services.

Once the contractor has left, we need to be able to live with the equipment

Remote connectivity

A click-in Ethernet communications option module allows the drive to be accessed from anywhere around the building or even around the world. This can be useful if you outsource your building maintenance or the drives are located in an inaccessible part of the building.

It is great that we can allow an outside expert to access the drive remotely when we have a problem



Much less noise

Affinity uses a unique control strategy called Rotor Flux Control (RFC) to generate the power output waveforms. Unlike some other methods of control, this allows the quality of the output waveform to be selected by adjusting the switching frequency. There is a direct correlation between output quality and audible noise, where higher frequencies produce less audible noise and heating within the motor. This allows more flexibility for positioning HVAC/R equipment close to noise sensitive areas.

The HVAC/R system should be unobtrusive to everyone that occupies the building

Support when I need it

We are committed to serving you. This is achieved through a global team of automation experts within our Drive Centres and distributors, who understand your operational needs. We have a passion for delivering solutions and service for drives and drive systems.

Working with Control Techniques gives us piece of mind, knowing that we can always speak with a drive expert, any time of day

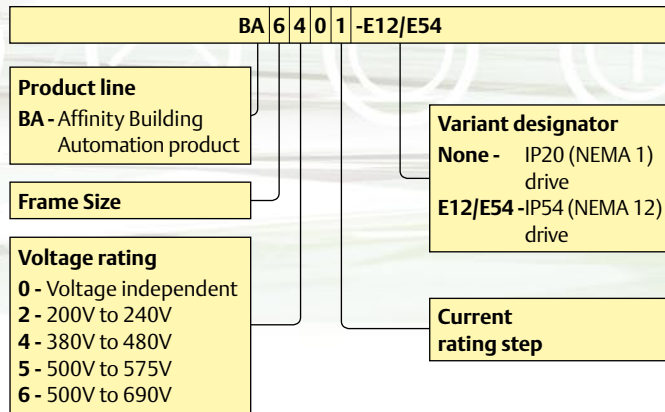


Environmental safety and electrical conformance

- IP54 (NEMA 12) and UL Type 12 module, or
- IP20 (NEMA 1) module and, with optional conduit box fitted, UL Type 1 module
 - IP20 (NEMA 1) module meets IP54 when through panel mounted
- Humidity 95% maximum (non condensing) at 40°C
- Altitude: 0 to 3000m, derate 1% per 100m between 1000m and 3000m
- Vibration: Tested in accordance with IEC 60068-2-64
- Mechanical Shock Tested in accordance with IEC 60068-2-29
- Storage temperature -40°C to 50°C
- Electromagnetic Immunity complies with EN 61800-3 and EN 61000-6-2
- With on board EMC filter, complies with EN 61800-3 (2nd environment)
- EN 61000-6-3 and EN 61000-6-4 with optional footprint EMC filter
- IEC 61000-3-4 Supply conditions
- IEC 60146-1-1 Supply conditions
- IEC 61800-5-1 (Power Drive Systems)
- IEC 61131-2 I/O
- EN 60529 Ingress protection
- EN 50178 / IEC 62103 Electrical safety
- UL508C, UL840
- EN 61000-6-2, EN 61000-6-4 EMC

Affinity model codes and ratings for IP20 (NEMA 1) and IP54 (NEMA 12) drives

Model code explanation



200-240VAC +/- 10% (kW@220V) (HP@230V)

Frame Size	Modules	Max Cont Current (A)	Typical Motor Output Power (kW) (HP)	
1	BA1201	5.2	1.1	1.5
	BA1202	6.8	1.5	2
	BA1203	9.6	2.2	3
	BA1204	11	3	3
2	BA2201	15.5	4	5
	BA2202	22	5.5	7.5
	BA2203	28	7.5	10
3	BA3201	42	11	15
	BA3202	54	15	20
4	BA4201	68	18.5	25
	BA4202	80	22	30
5	BA5201	130	37	50
	BA5202	154	45	60

380-480VAC +/- 10% (kW@400V) (HP@460V)

Frame Size	Modules	Max Cont Current (A)	Typical Motor Output Power (kW) (HP)	
1	BA1401	2.8	1.1	1.5
	BA1402	3.8	1.5	2
	BA1403	5	2.2	3
	BA1404	6.9	3	5
	BA1405	8.8	4	5
	BA1406	11	5.5	7.5
2	BA2401	15.3	7.5	10
	BA2402	21	11	15
	BA2403	29	15	20
3	BA3401	35	18.5	25
	BA3402	43	22	30
	BA3403	56	30	40
4	BA4401	68	37	50
	BA4402	83	45	60
	BA4403	104	55	75
5	BA5401	138	75	100
	BA5402	168	90	125
6	BA6401	205	110	150
	BA6402	236	132	200

500-575VAC +/- 10% (kW@575V) (HP@575V)

Frame Size	Modules	Max Cont Current (A)	Typical Motor Output Power (kW) (HP)	
3	BA3501	5.4	3	3
	BA3502	6.1	4	5
	BA3503	8.4	5.5	7.5
	BA3504	11	7.5	10
	BA3505	16	11	15
	BA3506	22	15	20
4	BA4603*	36	22	30
	BA4604*	43	30	40
	BA4605*	52	37	50
	BA4606*	62	45	60
5	BA5601*	84	55	75
	BA5602*	99	75	100
6	BA6601*	125	90	125
	BA6602*	144	110	150

*The same model can be used on a 575V or a 690V supply, and has two different output ratings. For example: BA4603 is suitable for a 22kW output motor on a 575V supply and a 30kW output motor on a 690V supply. Can be used on IT supplies - all voltages, Grounded delta supplies - all voltages except 690V.

500-690VAC +/- 10% (kW@690V) (HP@690V)

Frame Size	Modules	Max Cont Current (A)	Typical Motor Output Power (kW) (HP)	
4	BA4601	22	18.5	25
	BA4602	27	22	30
	BA4603	36	30	40
	BA4604	43	37	50
	BA4605	52	45	60
	BA4606	62	55	75
5	BA5601	84	75	100
	BA5602	99	90	125
6	BA6601	125	110	150
	BA6602	144	132	175

Notes:

For size 1 to 6 IP20 (NEMA 1) drives and size 1 to 3 IP54 (NEMA 12) drives, the continuous current ratings given are for maximum 40°C (104°F) [/50°C(122°F) with derating], 1000m altitude and 3.0kHz switching. For size 4 to 6 IP54 (NEMA 12) drives, the continuous current ratings given are for maximum 35°C (95°F) [/40°C (104°F) with derating], 1000m altitude and 3.0kHz switching.

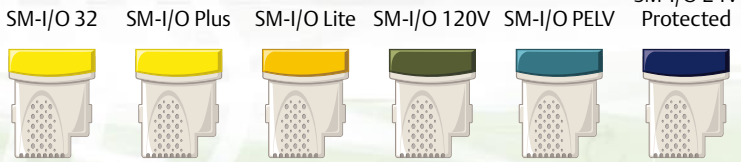
Select model on actual motor full load current.

All drives include keypad and internal EMC filters.

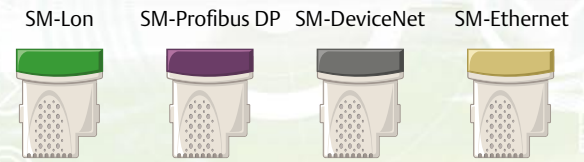
Options, weights and dimensions

Options

Input/Output click-in option modules



Communications click-in option modules



Additional EMC filters to EN61000-6-4

Affinity's built-in EMC filter complies with EN 61800-3. External EMC filters are available for compliance with EN 61000-6-4.

IP20 (NEMA 1) Drive	Filter order code	IP20 (NEMA 1) Drive	Filter order code	IP54 (NEMA 12) Drive	Filter order code	IP54 (NEMA 12) Drive	Filter order code
BA1201 to BA1202	4200-6118	BA3401 to BA3403	4200-6305	BA1201-E12/54 to BA1202-E12/54	4200-6125	BA3401-E12/54 to BA3403-E12/54	4200-6318
BA1203 to BA1204	4200-6119	BA4401 to BA4403	4200-6406	BA1203-E12/54 to BA1204-E12/54	4200-6124	BA4401-E12/54 to BA4403-E12/54	4200-6414
BA2201 to BA2203	4200-6210	BA5401 to BA5402	4200-6503	BA2201-E12/54 to BA2203-E12/54	4200-6218	BA5401-E12/54 to BA5402-E12/54	4200-6505
BA3201 to BA3202	4200-6307	BA6401 to BA6402	4200-6603	BA3201-E12/54 to BA3202-E12/54	4200-6320	BA6401-E12/54 to BA6402-E12/54	4200-6605
BA4201 to BA4203	4200-6406	BA3501 to BA3507	4200-6309	BA4201-E12/54 to BA4203-E12/54	4200-6414	BA3501-E12/54 to BA3507-E12/54	4200-6319
BA1401 to BA1404	4200-6118	BA4601 to BA4606	4200-6408	BA1401-E12/54 to BA1404-E12/54	4200-6125	BA4601-E12/54 to BA4606-E12/54	4200-6415
BA1405 to BA1406	4200-6119	BA5601 to BA5602	4200-6504	BA1405-E12/54 to BA1406-E12/54	4200-6124	BA5601-E12/54 to BA5602-E12/54	4200-6506
BA2401 to BA2403	4200-6210	BA6601 to BA6602	4200-6604	BA2401-E12/54 to BA2403-E12/54	4200-6218	BA6601-E12/54 to BA6602-E12/54	4200-6606

Weights and dimensions



Frame Size	Model	Weight			
		IP20 (NEMA 1) drive		IP 54 (NEMA 12) drive	
		kg	lb	kg	lb
1	BA1201 to BA1204, BA1401 to BA1404	5	11	9	20
	BA1405 and BA1406	5.8	12.8		
2	All	7	15.4	12	26.5
3	All	15	33.1	25	55
4	All	30	66.1	40	88
5	All	55	121.3	70	154
6	All	75	165.3	90	198

Frame Size	Dimension					
	IP20 (NEMA 1) drive			IP54 (NEMA 12) drive		
	H	W	D	H	W	D
1	386mm (15.20in)	100mm (3.94in)	219mm (8.62in)	560mm (22.05in)	184mm (7.24in)	264mm (10.39in)
2	389mm (15.32in)	155mm (6.10in)		552mm (21.73in)	236mm (9.29in)	262mm (10.32in)
3	389mm (15.32in)	250mm (9.84in)	260mm (10.24in)	544mm (21.42in)	331mm (13.03in)	302mm (11.89in)
4	547mm (21.54in)	310mm (12.21in)	298mm (11.73in)	703mm (27.68in)	386mm (15.20in)	346mm (13.62in)
5	858mm (33.78in)			1211mm (47.68in)	416mm (16.38in)	347mm (13.66in)
6	1169mm (46.02in)			1522mm (59.92in)	416mm (16.38in)	348mm (13.70in)

Control Techniques Drive & Application Centres

- | | | | | |
|--|--|---|--|---|
| <p>AUSTRALIA
Melbourne Application Centre
T: +613 973 81777
info.au@controltechniques.com</p> <p>Sydney Drive Centre
T: +61 2 9838 7222
info.au@controltechniques.com</p> <p>AUSTRIA
Linz Drive Centre
T: +43 7229 789480
info.at@controltechniques.com</p> <p>BELGIUM
Brussels Drive Centre
T: +32 1574 0700
info.be@controltechniques.com</p> <p>BRAZIL
Brazil Sales Office
T: +55 15 3238 3605
info.br@controltechniques.com</p> <p>CANADA
Toronto Drive Centre
T: +1 905 201 4699
info.ca@controltechniques.com</p> <p>Calgary Drive Centre
T: +1 403 253 8738
info.ca@controltechniques.com</p> <p>CHINA
Shanghai Drive Centre
T: +86 21 5426 0668
info.cn@controltechniques.com</p> <p>Beijing Application Centre
T: +86 10 856 31122 ext 820
info.cn@controltechniques.com</p> <p>CZECH REPUBLIC
Brno Drive Centre
T: +420 541 192111
info.cz@controltechniques.com</p> <p>DENMARK
Copenhagen Drive Centre
T: +45 4369 6100
info.dk@controltechniques.com</p> | <p>FRANCE*
Angoulême Drive Centre
T: +33 5 4564 5454
info.fr@controltechniques.com</p> <p>GERMANY
Bonn Drive Centre
T: +49 2242 8770
info.de@controltechniques.com</p> <p>Chemnitz Drive Centre
T: +49 3722 52030
info.de@controltechniques.com</p> <p>Darmstadt Drive Centre
T: +49 6251 17700
info.de@controltechniques.com</p> <p>GREECE*
Athens Application Centre
T: +0030 210 57 86086/088
info.gr@controltechniques.com</p> <p>HOLLAND
Rotterdam Drive Centre
T: +31 184 420555
info.nl@controltechniques.com</p> <p>HONG KONG
Hong Kong Application Centre
T: +852 2979 5271
info.hk@controltechniques.com</p> <p>INDIA
Chennai Drive Centre
T: +91 44 2496 1123/
2496 1130/2496 1083
info.in@controltechniques.com</p> <p>Pune Application Centre
T: +91 20 2612 7956/2612 8415
info.in@controltechniques.com</p> <p>Kolkata Application Centre
T: +91 33 2357 5302/2357 5306
info.in@controltechniques.com</p> <p>New Delhi Application Centre
T: +91 11 2 576 4782/2 581 3166
info.in@controltechniques.com</p> | <p>IRELAND
Dublin Drive Centre
T: +353 45 448200
info.ie@controltechniques.com</p> <p>ITALY
Milan Drive Centre
T: +39 02575 751
info.it@controltechniques.com</p> <p>Reggio Emilia Application Centre
T: +39 02575 751
info.it@controltechniques.com</p> <p>Vicenza Drive Centre
T: +39 0444 933400
info.it@controltechniques.com</p> <p>KOREA
Seoul Application Centre
T: +82 2 3483 1605
info.kr@controltechniques.com</p> <p>MALAYSIA
Kuala Lumpur Drive Centre
T: +603 5634 9776
info.my@controltechniques.com</p> <p>REPUBLIC OF SOUTH AFRICA
Johannesburg Drive Centre
T: +27 11 462 1740
info.za@controltechniques.com</p> <p>Cape Town Application Centre
T: +27 21 556 0245
info.za@controltechniques.com</p> <p>RUSSIA
Moscow Application Centre
T: +7 495 981 9811
info.ru@controltechniques.com</p> <p>SINGAPORE
Singapore Drive Centre
T: +65 6468 8979
info.sg@controltechniques.com</p> | <p>SLOVAKIA
EMERSON A.S
T: +421 32 7700 369
info.sk@controltechniques.com</p> <p>SPAIN
Barcelona Drive Centre
T: +34 93 680 1661
info.es@controltechniques.com</p> <p>Bilbao Application Centre
T: +34 94 620 3646
info.es@controltechniques.com</p> <p>Valencia Drive Centre
T: +34 96 154 2900
info.es@controltechniques.com</p> <p>SWEDEN*
Stockholm Application Centre
T: +468 554 241 00
info.se@controltechniques.com</p> <p>SWITZERLAND
Lausanne Application Centre
T: +41 21 637 7070
info.ch@controltechniques.com</p> <p>Zurich Drive Centre
T: +41 56 201 4242
info.ch@controltechniques.com</p> <p>TAIWAN
Taipei Application Centre
T: +886 22325 9555
info.tw@controltechniques.com</p> <p>THAILAND
Bangkok Drive Centre
T: +66 2580 7644
info.th@controltechniques.com</p> <p>TURKEY
Istanbul Drive Centre
T: +90 216 4182420
info.tr@controltechniques.com</p> | <p>UAE*
Dubai Application Centre
T: +971 4 883 8650
info.ae@controltechniques.com</p> <p>UNITED KINGDOM
Telford Drive Centre
T: +44 1952 213700
info.gb@controltechniques.com</p> <p>USA
California Drive Centre
T: +1 562 943 0300
info.us@controltechniques.com</p> <p>Charlotte Application Centre
T: +1 704 393 3366
info.us@controltechniques.com</p> <p>Chicago Application Centre
T: +1 630 752 9090
info.us@controltechniques.com</p> <p>Cleveland Drive Centre
T: +1 440 717 0123
info.us@controltechniques.com</p> <p>Florida Drive Centre
T: +1 239 693 7200
info.us@controltechniques.com</p> <p>Latin America Sales Office
T: +1 305 818 8897
info.us@controltechniques.com</p> <p>Minneapolis US Headquarters
T: +1 952 995 8000
info.us@controltechniques.com</p> <p>Oregon Drive Centre
T: +1 503 266 2094
info.us@controltechniques.com</p> <p>Providence Drive Centre
T: +1 401 541 7277
info.us@controltechniques.com</p> <p>Utah Drive Centre
T: +1 801 566 5521
info.us@controltechniques.com</p> |
|--|--|---|--|---|

Control Techniques Distributors

- | | | | | | |
|--|--|---|---|--|--|
| <p>ARGENTINA
Euro Techniques SA
T: +54 11 4331 7820
eurotech@eurotechsa.com.ar</p> <p>BAHRAIN
Iftikhar Electrical Est.
T: +973 271 116
ieepower@batelco.com.bh</p> <p>BULGARIA
BLS - Automation Ltd
T: +359 32 968 007
info@blsaautomation.com</p> <p>CENTRAL AMERICA
Mercado Industrial Inc.
T: +1 305 854 9515
rsaybe@mercadoindustrialinc.com</p> <p>CHILE
Ingeniería Y Desarrollo Tecnológico S.A
T: +56 2741 9624
idt@idt.cl</p> <p>COLOMBIA
Sistronic LTDA
T: +57 2 555 60 00
sistronic@telesat.com.co</p> | <p>CROATIA
Koncar – MES d.d.
T: +385 1 366 7273
nabava@koncar-mes.hr</p> <p>CYPRUS
Acme Industrial Electronic Services Ltd
T: +3572 5 332181
acme@cytanet.com.cy</p> <p>EGYPT
Samiram
T: +202 7360849/
+202 7603877
samiram2@samiram.com</p> <p>FINLAND
SKS Control
T: +358 207 6461
control@sksf.fi</p> <p>HUNGARY
Control-VH Kft
T: +361 431 1160
info@controlvh.hu</p> <p>ICELAND
Samey ehf
T: +354 510 5200
samey@samey.is</p> | <p>INDONESIA
Pt Apikon Indonesia
T: +65 6468 8979
info.my@controltechniques.com</p> <p>Pt Yua Esa Sempurna Sejahtera
T: +65 6468 8979
info.my@controltechniques.com</p> <p>ISRAEL
Dor Drives Systems Ltd
T: +972 3900 7595
info@dor1.co.il</p> <p>KENYA
Kassam & Bros Co. Ltd
T: +254 2 556 418
kassambros@africaonline.co.ke</p> <p>KUWAIT
Saleh Jamal & Company WLL
T: +965 483 2358
sjceng@almullagroup.com</p> <p>LATVIA
EMT
T: +371 760 2026
janis@emt.lv</p> | <p>LEBANON
Black Box Automation & Control
T: +961 1 443773
info@blackboxcontrol.com</p> <p>LITHUANIA
Elinta UAB
T: +370 37 351 987
sigitas@elinta.lt</p> <p>MALTA
Mekanika Limited
T: +35621 442 039
mfrancica@gasan.com</p> <p>MEXICO
MELCSA
T: +52 55 5561 1312
melcsamx@iserve.net.mx
SERVITECK, S.A de C.V.
T: +52 55 5398 9591
servitek@data.net.mx</p> <p>MOROCCO
Leroy Somer Maroc
T: +212 22 354948
lsmaroc@wanadoopro.ma</p> <p>NEW ZEALAND
Advanced Motor Control. Ph.
T: +64 (0) 274 363 067
info.au@controltechniques.com</p> | <p>PHILIPPINES
Control Techniques Singapore Ltd
T: +65 6468 8979
info.my@controltechniques.com</p> <p>POLAND
APATOR CONTROL Sp. z o.o
T: +48 56 6191 207
drives@apator.torun.pl</p> <p>PORTUGAL
Harker Sumner S.A
T: +351 22 947 8090
drives.automation@harker.pt</p> <p>PUERTO RICO
Powermotion
T: +1 787 843 3648
dennis@powermotionpr.com</p> <p>QATAR
AFI Sitna Technologies
T: +974 468 4442
jp33@qatar.net.qa</p> <p>SAUDI ARABIA
A. Abunayyan Electric Corp.
T: +9661 477 9111
aec-salesmarketing@abunayyanguroup.com</p> | <p>SERBIA & MONTENEGRO
Master Inzenjering d.o.o
T: +381 24 551 605
master@eunet.yu</p> <p>SLOVENIA
PS Logatec
T: +386 1 750 8510
ps-log@ps-log.si</p> <p>TUNISIA
SIA Ben Djemaa & CIE
T: +216 1 332 923
bendjemaa@planet.tn</p> <p>URUGUAY
Secoin S.A
T: +5982 2093815
secoin@adinet.com.uy</p> <p>VENEZUELA
Digimex Sistemas C.A.
T: +58 243 551 1634</p> <p>VIETNAM
N.Duc Thinh
T: +84 8 9490633
infotech@nducthinh.com.vn</p> |
|--|--|---|---|--|--|