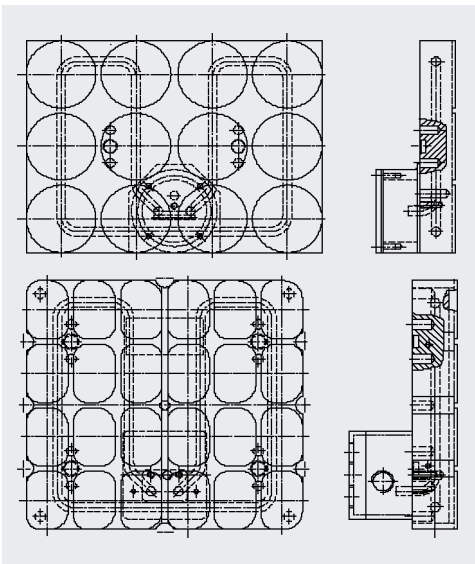
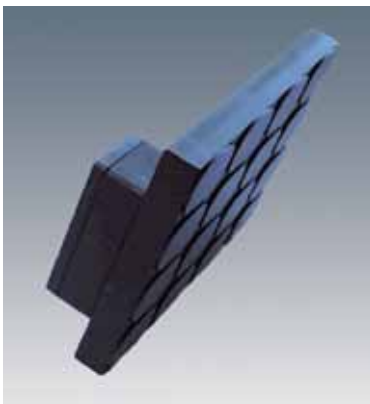
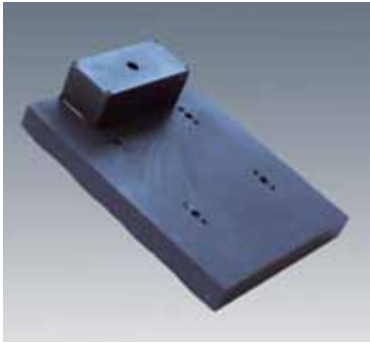


Aluminium Heating Plates



Cast-In Heaters

Description

Flat, rectangular heater, containing tubular elements precision cast into an Aluminium housing.

Features

- Controllable heat by resistance wire technology
- Tubular heating elements formed in accordance with customer and application requirements
- Uniform heat distribution
- Heat transfer mode: conduction

Design Characteristics

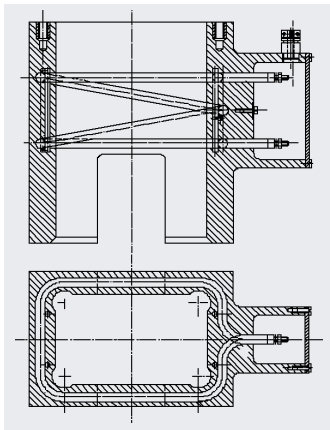
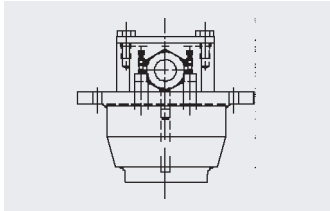
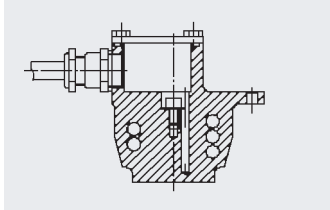
- Operating temperatures up to 300°C
- Dimensions and mating surfaces according to customer requirements
- Minimum thickness 25 mm
- Surface with non-stick coating, PTFE, chemical nickel, Niflor, anodized
- Self-contained heating unit with terminal box
- Sand casting free of inclusions and voids
- Casting material:
G-Al Si 9 Cu 3, G-Al Si 7 Mg, G- Al Si 5 Mg
- Operating voltage up to 500 V
- Power output variants -
according to customer requirements
- Precision machined mating surfaces, outer edges milled
- Plate annealed
- Electrical terminations: protruding tube-end M4
terminal box already screwed on
terminal box already casted on

Applications

- Packaging machines, deep-draw machines
- Foil and plate heating
- Hotplates
- Plastic moulding equipment
- Laminating equipment

DBK will gladly assist you with the design and calculation of your heater requirements or will provide the complete heater solution.

Seal Heads



Heater Boxes

Description

Solid, Aluminium construction, with precision cast-in tubular heating element

Features

- Controllable heat by resistance wire technology
- Tubular heating elements formed in accordance with customer and application requirements
- Uniform heat distribution
- Heat transfer by conduction, convection or radiation

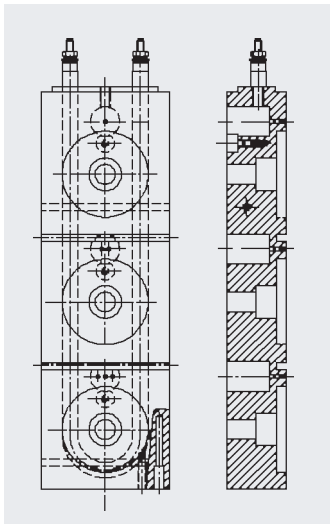
Design Characteristics

- Operating temperatures up to 350°C
- Dimensions and mating surfaces according to customer requirements
- Self-contained heating unit with terminal box
- Casting material: G-Al Si 9 Cu 3, G-Al Si 7 Mg, G- Al Si 5 Mg
- Operating voltage up to 500 V
- Power output variants - according to customer requirements
- Electrical terminations: protruding tube-end M4 terminal box already casted on

Applications

- Heating cabinets
- Plastic moulding equipment
- Sealing machines and equipment
- Welder terminals

Pre-Heating Plates



Description

Flat heating plates mounted on a base, equipped with control thermostat 95° to 300°C and electrical cord.

Design Characteristics

- Machined Aluminium heating plate
- Rated voltage 230 V
- Power Output 2400 W
- Electrical cord 2 m long with plug

Inquiries and Orders should indicate / include:

- Drawing
- Voltage and wattage
- Material
- Finish, Intended use
- Surface coating, Quantity

DBK will gladly assist you with the design and calculation of your heater requirements or will provide the complete heater solution.