

MORSETTI PER CAVO

CABLE CLAMPS

MATERIALE: Corpo in ottone AC nichelato
zincotropicalizzato

MATERIAL: Nickel plated brass AC body

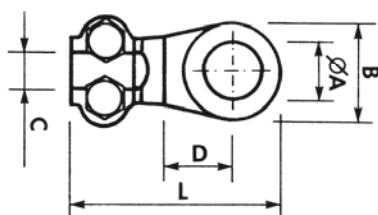


CAPICORDA A MORSETTO

CLAMP TERMINALS

2 bulloni Ø A standard

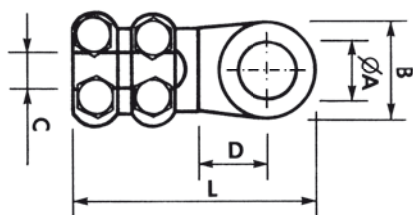
2 bolts Ø A standard



ARTICOLO	SEZIONE	Ø A PER VITE	B	C	D	L	PEZZI PER CONFEZIONI
ART	WIRE RANGE mm ²	SCREW MA	(mm)	(mm)	(mm)	(mm)	PIECES PER BOX
355	10-16	10	16	5	12,5	40	100
356	25	10	17,5	5	13	43	100
357	35	12	21	5,5	15,5	49	50

4 bulloni Ø A standard

4 bolts Ø A standard



ARTICOLO	SEZIONE	Ø A PER VITE	B	C	D	L	PEZZI PER CONFEZIONI
ART	WIRE RANGE mm ²	SCREW MA	(mm)	(mm)	(mm)	(mm)	PIECES PER BOX
358	50	10	21	8	16	56	50
360	75	12	27	12	17	64	50
361	100	12	31	12	17	66	25
362	125	15	33	14	18	71	25
363	150	14	34	16	19,5	75	25
364	175	14	36	16	21	78	25
365	200	16	38	18	23	84	10
366	250	16	41	18	25	93	10
367	300	16-20	46	23	28	103	10
368	400/500	20	52	25	32	116	10

MORSETTI PER CAVO

CABLE CLAMPS



MATERIALE: Ottone Δ C

MATERIAL: Brass Δ C

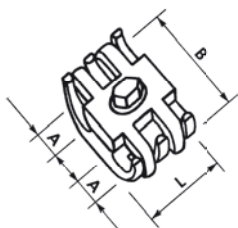


Morsetto Universale

Universal Clamp

1 bullone

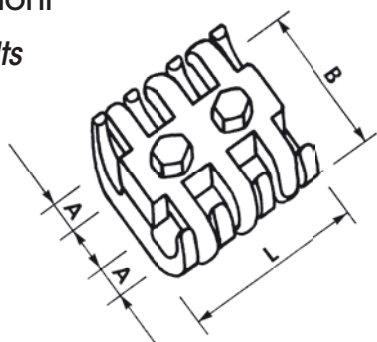
1 bolt



ARTICOLO ART	SEZIONE WIRE RANGE \varnothing mm ²	A PER CAVO FOR CABLE \varnothing mm	B mm	L mm	PEZZI PER CONFEZIONI PIECES PER BOX
323	6 ÷ 16	3 ÷ 5	24	20	50
326	16 ÷ 50	6 ÷ 8	30	25	50
329	35 ÷ 70	9 ÷ 12	39	30	50

2 bulloni

2 bolts



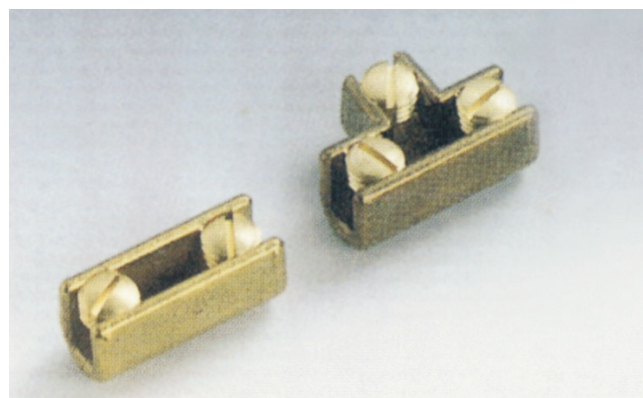
ARTICOLO ART	SEZIONE WIRE RANGE \varnothing mm ²	A PER CAVO FOR CABLE \varnothing mm	B mm	L mm	PEZZI PER CONFEZIONI PIECES PER BOX
333	6 ÷ 16	3 ÷ 5	24	32	50
336	25 ÷ 50	6 ÷ 8	31	36	50
339	35 ÷ 70	9 ÷ 12	40	43	25
342	70 ÷ 95	12 ÷ 14	52	53	10
344	95 ÷ 150	14 ÷ 16	51	53	10
346	150 ÷ 300	16 ÷ 22	70	70	5

MORSETTI PER CAVO CABLE CLAMPS

MATERIALE: Ottone Δ C

MATERIAL: Brass Δ C

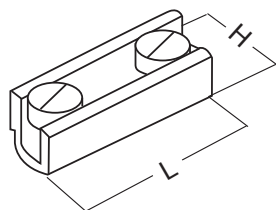
Morsetti di derivazione pressofusi



Morsetto a sella Saddle clamp

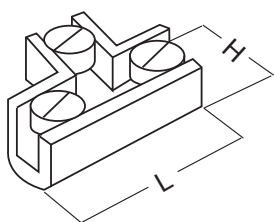
α "U" - 2 grani

"U" type - 2 screws



α "T" - 3 grani

"T" type - 3 screws



ARTICOLO ART	SEZIONE WIRE RANGE Ø mm ²	A PER CAVO FOR CABLE Ø mm	L mm	H mm	PEZZI PER CONFEZIONI PIECES PER BOX
090	4 ÷ 16	2 ÷ 4,5	22	14	100
091	16 ÷ 25	3 ÷ 6	29	19	100
092	25 ÷ 35	7 ÷ 8	43	21	50
093	35 ÷ 70	9 ÷ 10	53	25	25
094	70 ÷ 95	11 ÷ 13	71	33	10
095	95 ÷ 185	14 ÷ 16	73	35	10

ARTICOLO ART	SEZIONE WIRE RANGE Ø mm ²	A PER CAVO FOR CABLE Ø mm	L mm	H mm	PEZZI PER CONFEZIONI PIECES PER BOX
096	4 ÷ 16	2 ÷ 4,5	22	14	100
097	10 ÷ 25	3 ÷ 5	29	19	100
098	25 ÷ 35	7 ÷ 8	43	21	50
099	35 ÷ 70	9 ÷ 10	53	25	25

MORSETTI PER MESSA A TERRA FOR EARTHING DERIVATION

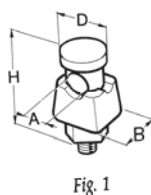


Fig. 1

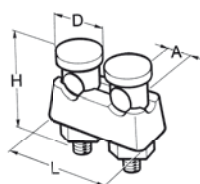


Fig. 2

ARTICOLO ART	CONDUTTORI	SEZIONE WIRE RANGE mm ²	A	B	C	L	FIGURA	PEZZI PER CONFEZIONI PIECES PER BOX
OD1	10	50	26	21	26,50	41	1	10
OD2	10	50	51	21	51,51	41	2	5