

TERMINAL BOXES





STB **180**

mild steel

IP 66

H: 150-400
W: 150-800
D: 80-120



OABP **188**

ABS

IP 66 / 67

H: 200-400
W: 200-600
D: 130



ILS **182**

stainless steel

IP 66

H: 150-400
W: 150-800
D: 80-120



DPCP **190**

polycarbonate

IP 66 / 67

H: 53-230
W: 55-300
D: 36-121



HALP **183**

aluminium

IP 65

H: 45-230
W: 50-600
D: 30-180



OPCP **191**

polycarbonate

IP 66 / 67

H: 200-400
W: 200-600
D: 130



MGRP **184**

polyester

IP 65

H: 75-405
W: 80-560
D: 55-120



DABP **185**

ABS

IP 66 / 67

H: 53-230
W: 55-300
D: 36-121



SABP **186**

ABS

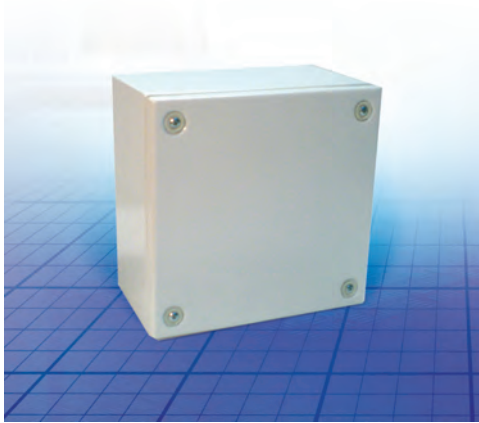
IP 66 / 67

H: 75-175
W: 125-250
D: 75-150



Mild steel

STB, Steel terminal box



Material: 1.2mm mild steel.

Body: Folded and seam welded. Four 8.5mm diameter holes for wall fixing. Four M6x13 studs for Bottom Profiles/Mounting plate .

Gasket: Sealing is ensured by an injected one piece polyurethane gasket.

Earthing: Earthing studs M8x12mm in body and cover, M8 nuts, earth washers, and earth labels.

Protection: Complies with IP 66, IK 10.

Finish: RAL 7035, structure powder coating.

Approvals: CE, KEMA, cUL, UL.

Delivery: Base, cover, cover screws, fixing screws, cover plugs, and earthing facilities.

| H | W | D | Weight | Part No. | | |
|------|------|-----|--------|-----------|-----------|-----------|
| 150 | 150 | 80 | 1,24 | STB151508 | | |
| | | 120 | 1,46 | STB151512 | | |
| | | 300 | 80 | 2,23 | STB153008 | |
| 200 | 200 | 120 | 2,56 | STB153012 | | |
| | | 80 | 2,00 | STB202008 | | |
| | | 120 | 2,30 | STB202012 | | |
| 300 | 300 | 80 | 2,82 | STB203008 | | |
| | | 120 | 3,19 | STB203012 | | |
| | | 400 | 80 | 3,67 | STB204008 | |
| 400 | 400 | 120 | 4,09 | STB204012 | | |
| | | 500 | 120 | 4,98 | STB205012 | |
| | | 600 | 120 | 6,02 | STB206012 | |
| 600 | 600 | 120 | 7,86 | STB208012 | | |
| | | 300 | 300 | 80 | 4,09 | STB303008 |
| | | 120 | 4,54 | STB303012 | | |
| 800 | 800 | 400 | 120 | 5,79 | STB304012 | |
| | | 500 | 120 | 7,04 | STB305012 | |
| | | 600 | 120 | 8,42 | STB306012 | |
| 1400 | 1400 | 400 | 400 | 120 | 7,49 | STB404012 |
| | | 600 | 120 | 10,82 | STB406012 | |
| | | 800 | 120 | 14,07 | STB408012 | |

BPP, Bottom profile



Description: Bottom profile for DIN rail mounting.

Material: Galvanized steel.

Pack quantity: 2 pieces.

| W | Part No. |
|-----|----------|
| 150 | BPP15 |
| 200 | BPP20 |
| 300 | BPP30 |
| 400 | BPP40 |
| 500 | BPP50 |
| 600 | BPP60 |
| 800 | BPP80 |

BMP, Mounting plate

Description: Steel mounting plate for terminal boxes.

Material: 2mm galvanized steel.

Pack quantity: 1 piece.

| Enclosure dimension | | Mounting plate | | Part No. | | |
|---------------------|-----|----------------|-----|----------|---------|---------|
| H | W | h | w | | | |
| 150 | 150 | 125 | 120 | BMP1515 | | |
| | | 300 | 270 | BMP1530 | | |
| | | 200 | 200 | 170 | 170 | BMP2020 |
| 200 | 200 | 300 | 270 | BMP2030 | | |
| | | 400 | 170 | 370 | BMP2040 | |
| | | 500 | 170 | 470 | BMP2050 | |
| 300 | 300 | 600 | 170 | 570 | BMP2060 | |
| | | 800 | 170 | 770 | BMP2080 | |
| | | 300 | 300 | 275 | 270 | BMP3030 |
| 400 | 400 | 400 | 275 | 370 | BMP3040 | |
| | | 500 | 275 | 470 | BMP3050 | |
| | | 600 | 275 | 570 | BMP3060 | |
| 600 | 600 | 400 | 400 | 380 | 370 | BMP4040 |
| | | 600 | 380 | 570 | BMP4060 | |
| | | 800 | 380 | 770 | BMP4080 | |



BDR, DIN rail

Description: DIN rail 35mm for terminal boxes.
Material: Galvanized steel.
Pack quantity: 5 pieces.

| W | Part No. |
|-----|----------|
| 150 | BDR3515 |
| 200 | BDR3520 |
| 300 | BDR3530 |
| 400 | BDR3540 |
| 500 | BDR3550 |
| 600 | BDR3560 |
| 800 | BDR3580 |

AW, Wall mounting brackets



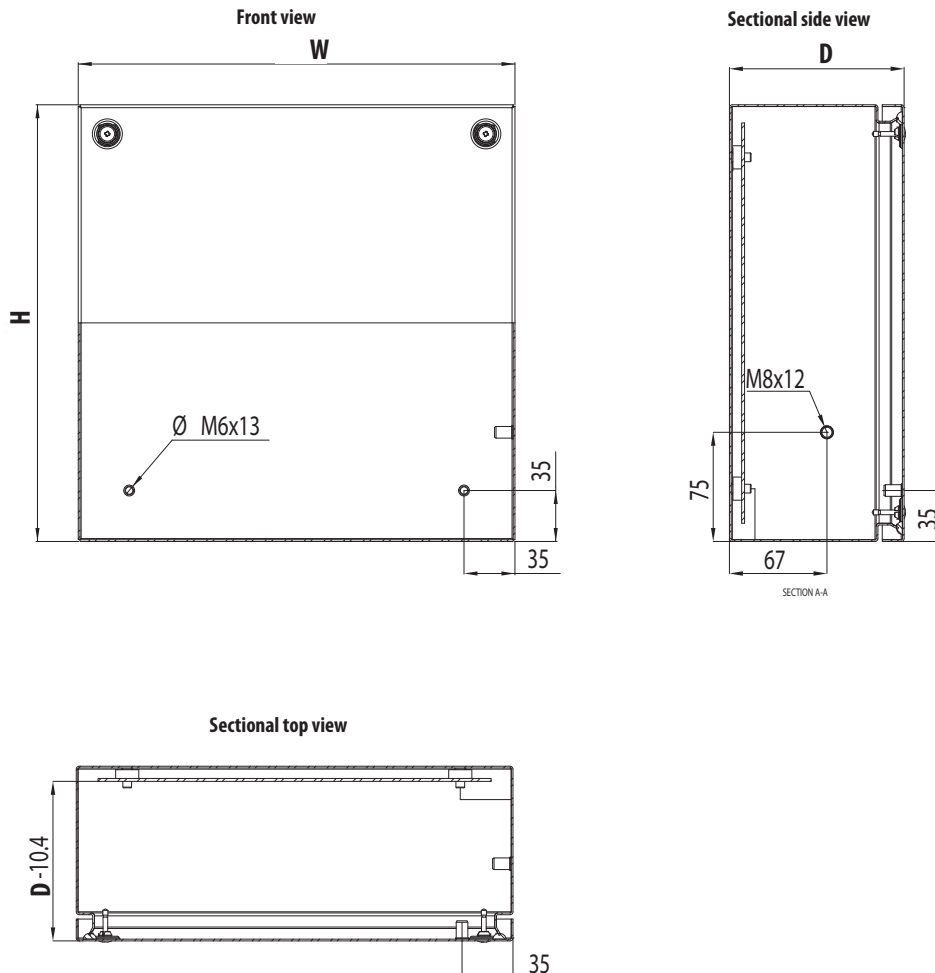
Description: Mounting brackets for safe wall fixing. It includes the sealing washers to guarantee the IP rating.
Material: 3mm zinc plated steel.
Pack quantity: 4 brackets with mounting accessories.

STBH, Hinges

Description: Using this accessory the cover can be hinged.
 Machining is required.
Material: Zinc-plated steel.
Pack quantity: Hinges with mounting accessories. 2 pieces.

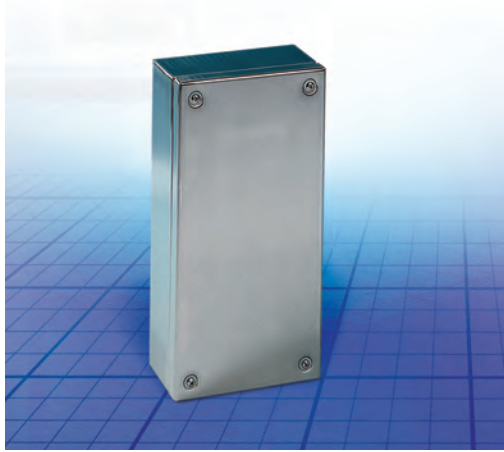
| Part No. |
|----------|
| AW41 |

| Part No. |
|----------|
| STBH02 |



Stainless steel

ILS, Stainless Steel



Material: 1.5 mm stainless steel AISI 304. Acid proof AISI 316 available on request.
Body: Folded and seam welded. Supports for DIN-rails/ Mounting plate.
Gasket: Polyurethane (PUR). Temperature resistant -50°C +80°C.
Earthing: Earthing studs M6 x 15 in body and cover, M6 nuts, and earth labels.
Protection: Complies with IP66, IK10.
Finish: Outer box and cover 180-220 grit, 0.8-1.2 microns surface roughness.
Approvals: FI, GL and GOST.
Delivery: Base, cover, cover screws in stainless steel, fixing screws and cover plugs.

| H | W | D | Part No. |
|-----|-----|-----|-----------|
| 150 | 150 | 80 | ILS151508 |
| | | 120 | ILS151512 |
| | | 300 | ILS153008 |
| 200 | 200 | 80 | ILS202008 |
| | | 120 | ILS202012 |
| | | 300 | ILS203008 |
| 300 | 300 | 80 | ILS303008 |
| | | 120 | ILS303012 |
| | | 400 | ILS304012 |
| 400 | 400 | 80 | ILS404008 |
| | | 120 | ILS404012 |
| | | 120 | ILS406012 |
| 400 | 400 | 120 | ILS406012 |
| | | 120 | ILS408012 |
| | | 120 | ILS408012 |

IMP, Mounting plate

Description: Steel mounting plate for ILS boxes.
Material: 2mm galvanised steel.
Pack quantity: 1 piece.

| For enclosure | | Part No. |
|---------------|-----|----------|
| H | W | |
| 150 | 150 | IMP1515 |
| | 300 | IMP1530 |
| | 200 | IMP2020 |
| | 300 | IMP2030 |
| | 400 | IMP2040 |
| 300 | 500 | IMP2050 |
| | 600 | IMP2060 |
| | 800 | IMP2080 |
| | 300 | IMP3030 |
| | 400 | IMP3040 |
| 400 | 500 | IMP3050 |
| | 600 | IMP3060 |
| | 400 | IMP4040 |
| | 600 | IMP4060 |
| | 800 | IMP4080 |

IDR, DIN rail

Description: DIN rail 35mm for ILS boxes.S
Material: Galvanized steel.
Pack quantity: 1 piece.

| For enclosure | | Part No. |
|---------------|--|----------|
| W | | |
| 800 | | IDR3580 |
| 600 | | IDR3560 |
| 500 | | IDR3550 |
| 400 | | IDR3540 |
| 300 | | IDR3530 |
| 200 | | IDR3520 |
| 150 | | IDR3515 |

ILH, Hinges



Description: Using this accessory the cover can be hinged. Machining is required.
Material: Stainless steel
Pack quantity: Set of 2 hinges with mounting accessories.

| Part No. |
|----------|
| ILH02 |

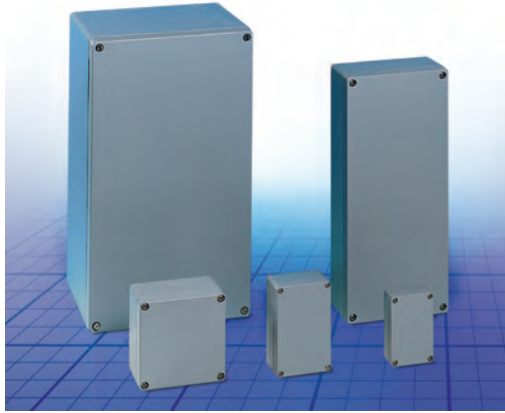
ILSB, Stainless Steel Wall mounting brackets

Description: Mounting kit for wall fixing. It includes the sealing washers to maintain the IP rating.
Material: Stainless steel AISI 304.
Pack quantity: 4 brackets with mounting accessories.

| For enclosure | | Part No. |
|---------------|--|----------|
| D | | |
| 50 | | ILSB1 |
| 20 | | ILSB2 |



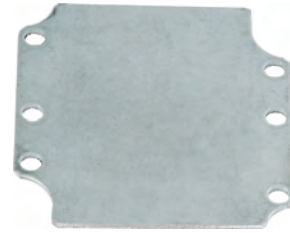
HALP, Aluminium



Material: Aluminium type ALSi 12.
Gasket: Standard supply fitted with neoprene gasket. Silicone gaskets are available on request.
Temperature resistance: -40°C to +80°C with the standard neoprene gasket. -50°C to +130°C with an optional silicone gasket.
Protection: Complies with IP 65.
Finish: RAL 7001
Approvals: GL. For UL approvals, please contact our Sales Department.
Delivery: Box base, cover and cover screws made of stainless steel.

| H | W | D | Weight | Part No. |
|-----|-----|-----|--------|--------------|
| 45 | 50 | 30 | 0.07 | HALP050503GE |
| 64 | 58 | 36 | 0.17 | HALP060604GE |
| | 98 | 36 | 0.22 | HALP061004GE |
| | 150 | 36 | 0.33 | HALP061504GE |
| 80 | 75 | 57 | 0.29 | HALP080806GE |
| | 125 | 57 | 0.44 | HALP081306GE |
| | 175 | 57 | 0.54 | HALP081806GE |
| | 250 | 57 | 0.71 | HALP082506GE |
| 122 | 122 | 80 | 0.86 | HALP121208GE |
| | | 90 | 0.94 | HALP121209GE |
| | 220 | 80 | 1.29 | HALP122208GE |
| | | 90 | 1.32 | HALP122209GE |
| | 360 | 80 | 1.41 | HALP123608GE |
| 160 | 160 | 90 | 1.96 | HALP161609GE |
| | 260 | 90 | 2.55 | HALP162609GE |
| | 360 | 90 | 4.31 | HALP163609GE |
| | 560 | 90 | 2.75 | HALP165609GE |
| 230 | 200 | 110 | 4.27 | HALP232011GE |
| | 330 | 110 | 5.75 | HALP233311GE |
| | | 180 | 4.81 | HALP233318GE |
| | 400 | 110 | 6.89 | HALP234011GE |
| | 600 | 110 | 6.88 | HALP236011GE |

HMP, HALP Mounting plate



Description: Steel mounting plate for HALP boxes.
Material: 1.5mm galvanized steel, 2.5mm HMP1656E and HMP2360E.
Pack quantity: 1 piece.

| For enclosure | | | | |
|---------------|-----|-----|-----|----------|
| H | W | h | w | Part No. |
| 64 | 58 | 54 | 48 | HMP0606E |
| | 98 | 54 | 88 | HMP0610E |
| | 150 | 54 | 140 | HMP0615E |
| 80 | 75 | 69 | 64 | HMP0808E |
| | 125 | 69 | 114 | HMP0813E |
| | 175 | 69 | 164 | HMP0818E |
| | 250 | 69 | 239 | HMP0825E |
| 122 | 122 | 108 | 107 | HMP1212E |
| | 220 | 108 | 204 | HMP1222E |
| | 360 | 108 | 343 | HMP1236E |
| 160 | 160 | 145 | 143 | HMP1616E |
| | 260 | 145 | 243 | HMP1626E |
| | 360 | 145 | 343 | HMP1636E |
| | 560 | 145 | 543 | HMP1656E |
| 230 | 200 | 214 | 183 | HMP2320E |
| | 330 | 214 | 313 | HMP2333E |
| | 400 | 214 | 383 | HMP2340E |
| | 600 | 214 | 583 | HMP2360E |

HHI, Hinges



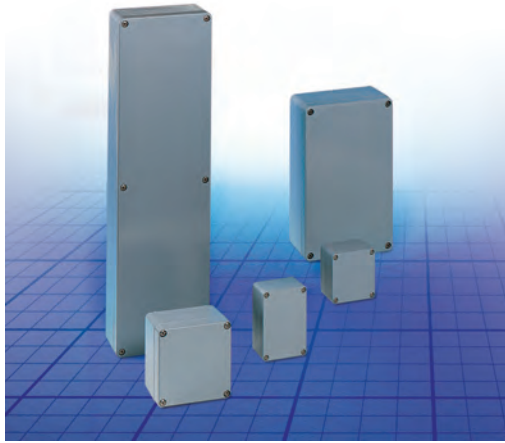
Description: Using this accessory the cover can be hinged. 150° opening. Machining is required.
Material: Aluminium.
Pack quantity: Set of 2 hinges in HHI2, and 3 hinges in HHI3. Mounting accessories are included.

| Part No. |
|----------|
| HHI02 |
| HHI03 |

Internal hinges available on request.

Polyester

MGRP, Polyester.



Material: Glass-fibre reinforced polyester.
Gasket: Standard supply fitted with neoprene gasket. Silicone gaskets are available on request.
Temperature resistance: -40°C to +80°C with the standard neoprene gasket. -50°C to +130°C with an optional silicone gasket.
Protection: Complies with IP65.
Finish: RAL 7001
Approvals: UL, GL.
Delivery: Box base, cover and cover screws made of stainless steel.

| H | W | D | Weight | Part No. |
|-----|-----|-----|--------|--------------|
| 75 | 80 | 55 | 0.23 | MGRP080806GE |
| | | 75 | 0.31 | MGRP080808GE |
| | 110 | 55 | 0.30 | MGRP081106GE |
| | | 75 | 0.38 | MGRP081108GE |
| | 160 | 55 | 0.41 | MGRP081606GE |
| | | 75 | 0.43 | MGRP081608GE |
| | | 55 | 0.45 | MGRP081906GE |
| | 190 | 75 | 0.53 | MGRP081908GE |
| | | 90 | 0.75 | MGRP121209GE |
| 120 | 122 | 90 | 1.06 | MGRP122209GE |
| | | 90 | 1.13 | MGRP161609GE |
| 160 | 260 | 90 | 1.17 | MGRP162609GE |
| | | 90 | 2.15 | MGRP163609GE |
| | 560 | 90 | 3.20 | MGRP165609GE |
| | | 120 | 2.66 | MGRP252612GE |
| 250 | 255 | 120 | 3.65 | MGRP254012GE |
| | | 120 | 5.58 | MGRP414012GE |
| 405 | 400 | 120 | 5.58 | MGRP414012GE |

GMP, MGRP Mounting plate



Description: Mounting plate for MGRP boxes.
Material: 1.5 mm galvanized steel GMP1212E and above, and 2.5mm GMP1656E.
Pack quantity: 1 piece.

| For enclosure | | | | |
|---------------|-----|-----|-----|----------|
| H | W | h | w | Part No. |
| 75 | 80 | 64 | 69 | GMP0808E |
| | | 64 | 99 | GMP0811E |
| | 160 | 64 | 149 | GMP0816E |
| 120 | 122 | 64 | 179 | GMP0819E |
| | | 107 | 108 | GMP1212E |
| | 220 | 107 | 206 | GMP1222E |
| 160 | 160 | 144 | 143 | GMP1616E |
| | | 144 | 244 | GMP1626E |
| | 360 | 144 | 344 | GMP1636E |
| | | 144 | 544 | GMP1656E |
| 250 | 255 | 233 | 240 | GMP2526E |
| | 400 | 233 | 383 | GMP2540E |
| 405 | 400 | 390 | 385 | GMP4140E |

HHI, Hinges



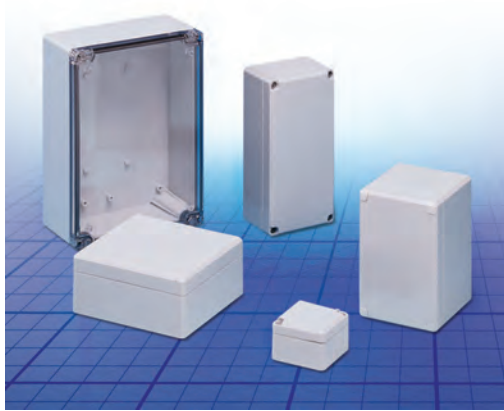
Description: Using this accessory the cover can be hinged. 150° opening. Machining is required.
Material: Aluminium.
Pack quantity: Set of 2 hinges in HHI2, and 3 hinges in HHI3. Mounting accessories are included.

| Part No. |
|----------|
| HHI02 |
| HHI03 |

Internal hinges available on request.



DABP, ABS



Description: ABS box, suitable for indoor use. Low UV radiation resistance.
Material: ABS.
Gasket: Polyurethane gasket integrated in the box cover.
Temperature resistance: -40°C to +60°C.
Flammability: UL94 HB
Protection: Complies with IP66/67, IK07 (+35°C), IK06 (-25°C).
Finish: RAL 7035
Approvals: GL, FI and GOST.
Delivery: Box body, plain cover, cover screws made of stainless steel, mounting screws and cover plugs made of polyamide.
On request: Box with transparent cover: the transparent cover is made of polycarbonate, the item number is DABPxxxxxTE.

| H | W | D | Weight | Part No. |
|-----|-----|-----|--------|--------------|
| 53 | 55 | 36 | 0.04 | DABP050504GE |
| | 63 | 36 | 0.05 | DABP050704GE |
| 80 | 82 | 56 | 0.12 | DABP080806GE |
| | | 86 | 0.14 | DABP080809GE |
| 120 | 120 | 56 | 0.15 | DABP081206GE |
| | | 86 | 0.19 | DABP081209GE |
| | | 160 | 0.19 | DABP081606GE |
| 120 | 122 | 86 | 0.23 | DABP081609GE |
| | | 56 | 0.20 | DABP121206GE |
| | | 86 | 0.26 | DABP121209GE |
| 150 | 200 | 160 | 0.34 | DABP121609GE |
| | | 86 | 0.38 | DABP122009GE |
| 160 | 240 | 76 | 0.39 | DABP152008GE |
| | | 91 | 0.55 | DABP162409GE |
| 230 | 300 | 121 | 0.68 | DABP162412GE |
| | | 86 | 0.85 | DABP233009GE |
| | | 111 | 0.90 | DABP233011GE |

DMP, Mounting plate



Description: Steel mounting plate for DABP/DPCP boxes.
Material: 1.5 mm galvanized steel.
Pack quantity: 1 piece.

| For enclosure | | | | |
|---------------|-----|-----|----------|----------|
| H | W | h | w | Part No. |
| 80 | 82 | 55 | 68 | DMP0808E |
| | 120 | 65 | 93 | DMP0812E |
| 120 | 160 | 65 | 133 | DMP0816E |
| | 122 | 105 | 95 | DMP1212E |
| | 160 | 105 | 132 | DMP1216E |
| 200 | 105 | 172 | DMP1220E | |
| 150 | 200 | 133 | 172 | DMP1520E |
| 160 | 240 | 145 | 213 | DMP1624E |
| 230 | 300 | 210 | 285 | DMP2330E |

DR, DIN rail



Description: DIN rail 35 mm for DABP/DPCP boxes.
Material: Steel.
Pack quantity: 1 piece.

| For enclosure | | | Part No. |
|---------------|-----|--|-----------|
| W | H/W | | |
| 82 | | | DR350584E |
| 120/122 | | | DR350964E |
| 160 | | | DR351364E |
| 200 * | | | DR351604E |
| 200 ** | | | DR351764E |
| | 250 | | DR352154E |
| 300 | | | DR352754E |

* DABP152008; ** DABP122009

DSHI, Hinges



Description: Using this accessory the cover can be hinged. Machining is required.
Material: Polycarbonate.
Finish: RAL 7035.
Pack quantity: Set of 2 hinges with mounting accessories.

| Part No. |
|----------|
| DSHI1E |

DFL, Wall mounting brackets

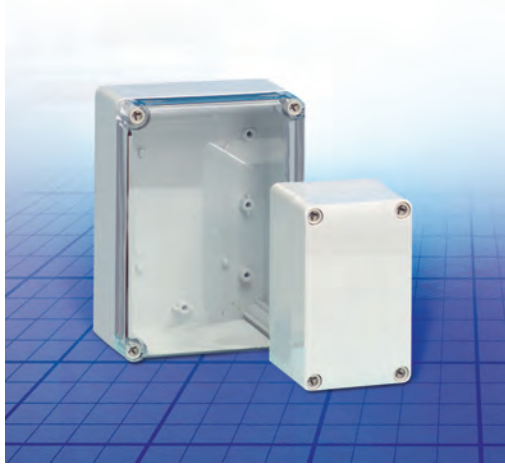


Description: Mounting brackets for wall fixing.
Material: Polycarbonate.
Surface characteristics: RAL 7035.
Pack quantity: 4 brackets with mounting accessories.

| Part No. |
|----------|
| DFL1E |

ABS

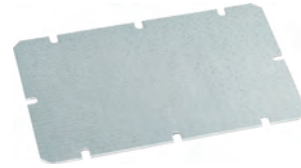
SABP, Small ABS box



Description: ABS box, suitable for indoor use. Low UV radiation resistance.
Material: ABS.
Gasket: Polyurethane gasket integrated in the box cover.
Temperature resistance: - 40°C to + 60°C.
Flammability: UL94 HB
Protection: Corresponds with IP 66/67,IK07 (+35°C), IK06 (-25°C).
Finish: RAL 7035
Approvals: GL, FI and GOST.
Delivery: Box base, cover, cover screws of polyamide and mounting screws.
On request: Box with transparent cover: the transparent cover is made of polycarbonate, the item number is SABPxxxxxTE. Box made of polycarbonate: With grey or transparent cover, the item number is SPCPxxxxxGE/SPCPxxxxxTE.

| H | W | D | Weight (g) | Part No. | |
|-----|-----|-----|--------------|--------------|--------------|
| 75 | 125 | 75 | 184 | SABP081308GE | |
| | | 100 | 243 | SABP081310GE | |
| | | 125 | 266 | SABP081313GE | |
| 125 | 125 | 75 | 250 | SABP131308GE | |
| | | 100 | 317 | SABP131310GE | |
| | | 125 | 353 | SABP131313GE | |
| | | 175 | 75 | 328 | SABP131808GE |
| | | | 100 | 401 | SABP131810GE |
| 175 | 175 | 125 | 459 | SABP131813GE | |
| | | 150 | 521 | SABP131815GE | |
| | | 75 | 392 | SABP181808GE | |
| | | | 490 | SABP181810GE | |
| | | | 557 | SABP181813GE | |
| | | 250 | 150 | 616 | SABP181815GE |
| | | | 75 | 553 | SABP182508GE |
| 100 | 666 | | SABP182510GE | | |
| | | 150 | 842 | SABP182515GE | |

SMP, Mounting plate



Description: Steel mounting plate for SABP boxes.
Material: 1.5 mm galvanized steel.
Pack quantity: 1 piece.

| For enclosure | | | | |
|---------------|-----|-----|-----|----------|
| H | W | h | w | Part No. |
| 75 | 125 | 48 | 98 | SMP0813E |
| 125 | 125 | 98 | 98 | SMP1313E |
| | | 98 | 148 | SMP1318E |
| 175 | 175 | 148 | 148 | SMP1818E |
| | | 148 | 223 | SMP1825E |

DR2, DIN rail



Description: DIN rail 35 mm for SABP boxes.
Material: Steel.
Pack quantity: 1 piece.

| H/W | Part No. |
|-----|-----------|
| 75 | DR350404E |
| 125 | DR350904E |
| 175 | DR351404E |
| 250 | DR352154E |

SCP, Cover plugs



Description: Only used in hinged boxes, the standard cover screws are replaced by cover plugs.
Material: Polyethylene.
Pack quantity: 10 pieces.

| For enclosure | |
|---------------|----------|
| D | Part No. |
| 75 | SCP08E |
| 100 | SCP10E |
| 125, 150 | SCP1315E |

**DSHI, Hinges**

Description: Using this accessory the cover can be hinged.
Machining is required.
Material: Polycarbonate.
Finish: RAL 7035.
Pack quantity: Set of 2 hinges with mounting accessories.

Part No.

DSHI1E

SFL, Wall mounting brackets

Description: Mounting brackets for wall fixing.
Material: Polycarbonate.
Finish: RAL 7035.
Pack quantity: 4 brackets with mounting accessories.

Part No.

SFL1E

ABS

OABP, Large ABS box



Description: ABS box, suitable for indoor use. Low UV radiation resistance.

Material: ABS

Gasket: Polyurethane gasket integrated in the box cover.

Temperature resistance: -40°C to +60°C.

Flammability: UL94 HB

Protection: Complies with IP 66/67, IK07 (+35°C), IK06 (-25°C).

Finish: RAL 7035

Delivery: Box base, cover, cover screws of polyamide and mounting screws.

Approvals: GL,FI and Gost

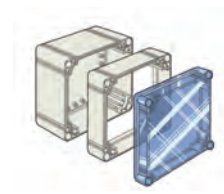
With grey cover

| H | W | D | Weight (g) | Part No. |
|-----|-----|-----|------------|--------------|
| 200 | 200 | 132 | 894 | OABP202013GE |
| | 300 | 132 | 1176 | OABP203013GE |
| | 400 | 132 | 1467 | OABP204013GE |
| 300 | 300 | 132 | 1510 | OABP303013GE |
| | 400 | 132 | 1950 | OABP304013GE |
| | 600 | 132 | 2696 | OABP306013GE |
| 400 | 600 | 132 | 3484 | OABP406013GE |

With transparent cover

| H | W | D | Weight (g) | Part No. |
|-----|-----|-----|------------|--------------|
| 200 | 200 | 132 | 926 | OABP202013TE |
| | 300 | 132 | 1218 | OABP203013TE |
| | 400 | 132 | 1512 | OABP204013TE |
| 300 | 300 | 132 | 1568 | OABP303013TE |
| | 400 | 132 | 2003 | OABP304013TE |
| | 600 | 132 | 2765 | OABP306013TE |
| 400 | 600 | 132 | 3567 | OABP406013TE |

OPCP-EE, Polycarbonate frame extension



Description: Depth extension frame, to be used when you need more depth than the standard. Can be used in combination with the OPCP range.

Material: Polycarbonate

Pack quantity: 1 piece

| For enclosure | | | | Part No. |
|---------------|-----|----|--|--------------|
| H | W | D | | |
| 200 | 200 | 55 | | OPCP202006EE |
| | 300 | 55 | | OPCP203006EE |
| | 400 | 55 | | OPCP204006EE |
| 300 | 300 | 55 | | OPCP303006EE |
| | 400 | 55 | | OPCP304006EE |
| | 600 | 55 | | OPCP306006EE |
| 400 | 600 | 55 | | OPCP406006EE |

OMP, Mounting plate



Description: Steel mounting plate for OABP/OPCP boxes.

Material: 1.5 mm galvanized steel.

Pack quantity: 1 piece.

| For enclosure | | | | | Part No. |
|---------------|-----|-----|-----|--|----------|
| H | W | h | w | | |
| 200 | 200 | 160 | 160 | | OMP2020E |
| | 300 | 160 | 260 | | OMP2030E |
| | 400 | 160 | 360 | | OMP2040E |
| 300 | 300 | 260 | 160 | | OMP3030E |
| | 400 | 260 | 260 | | OMP3040E |
| | 600 | 260 | 560 | | OMP3060E |
| 400 | 600 | 360 | 560 | | OMP4060E |

DR3, DIN rail



Description: DIN rail 35 mm for OABP/OPCP boxes.

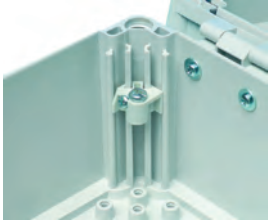
Material: Steel.

Pack quantity: 1 piece.

| For enclosure | | Part No. |
|---------------|--|-----------|
| W | | |
| 200 | | DR351505E |
| 300 | | DR352505E |
| 400 | | DR353505E |



OEL, Mounting plate depth adjustment kit



Description: Allows mounting of mounting plate at any depth. Include M5 bolts.
Pack quantity: OEL1E: 1 piece, and OELA1.04E: 4 pieces.

| Part No. |
|-----------|
| OELA1.04E |
| OEL1E |

OLW, Wing screw



Description: For enclosures equipped with hinges, used opposite hinges for easier access.
Pack quantity: 15 pieces

| Part No. |
|----------|
| OLW55E |

OCP, Cover plugs



Description: Only used in hinged boxes, the standard cover screws are replaced by cover plugs.
Material: Polyethylene.
Pack quantity: 12 pieces.

| Part No. |
|----------|
| OCP1E |

OHI, Hinges



Description: Using this accessory the cover can be hinged. Machining is required.
Material: Polycarbonate.
Finish: RAL 7035.
Pack quantity: Set of 2 hinges with mounting accessories.

| Part No. |
|----------|
| OHI1E |

OTS, Threaded bushing for cover screw



Description: Required for fixing a cover on the rear of the box, in conjunction with screws OLW.
Pack quantity: 1 piece

| Part No. |
|----------|
| OTS1E |

OFL, Wall mounting brackets

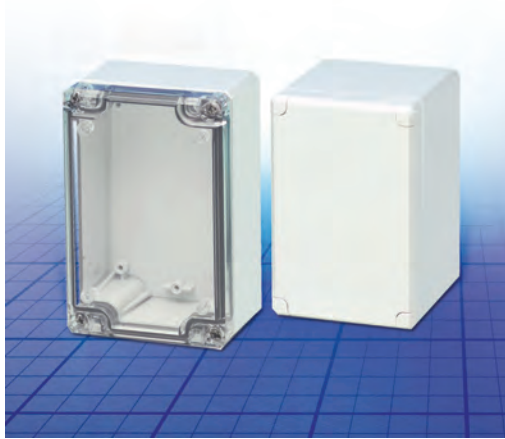


Description: Mounting brackets for wall fixing. Can be mounted in three different directions, and will support approximately a weight of 60 Kgs.
Material: Polyamide.
Finish: RAL 7035.
Pack quantity: 4 brackets with mounting accessories.

| Part No. |
|----------|
| OFL1E |

Polycarbonate

DPCP, Polycarbonate



Description: Polycarbonate box, suitable for outdoor use. High UV radiation resistance. Self-extinguishing.

Material: Polycarbonate.

Gasket: Polyurethane gasket integrated in the box cover.

Temperature resistance: -50°C to +100°C.

Flammability: UL746C 5V

Protection: Complies with IP 66/67.

Finish: RAL 7035

Approvals: GL, FI, GOST. For UL and cUL please contact our sales department.

Delivery: Box body, plain cover, cover screws made of stainless steel, mounting screws and cover plugs made of polyamide.

On request: Box with transparent cover: the transparent cover is made of polycarbonate, the item number is DPCPxxxxxTE.

| H | W | D | Weight | Part No. |
|-----|-----|-----|--------|--------------|
| 53 | 55 | 36 | 0.05 | DPCP050504GE |
| | 63 | 36 | 0.06 | DPCP050704GE |
| 80 | 82 | 56 | 0.13 | DPCP080806GE |
| | | 86 | 0.16 | DPCP080809GE |
| | 120 | 56 | 0.17 | DPCP081206GE |
| | | 86 | 0.21 | DPCP081209GE |
| | 160 | 56 | 0.19 | DPCP081606GE |
| | | 86 | 0.26 | DPCP081609GE |
| 120 | 122 | 56 | 0.22 | DPCP121206GE |
| | | 86 | 0.29 | DPCP121209GE |
| | 160 | 91 | 0.36 | DPCP121609GE |
| | | 86 | 0.42 | DPCP122009GE |
| 150 | 200 | 76 | 0.42 | DPCP152008GE |
| 160 | 240 | 91 | 0.61 | DPCP162409GE |
| | | 121 | 0.74 | DPCP162412GE |
| 230 | 300 | 86 | 0.97 | DPCP233009GE |
| | | 111 | 1.11 | DPCP233011GE |

DMP, Mounting plate



Description: Steel mounting plate for DABP/DPCP boxes.

Material: 1.5 mm galvanized steel.

Pack quantity: 1 piece.

| For enclosure | | | | | Part No. |
|---------------|-----|-----|-----|--|----------|
| H | W | h | w | | |
| 80 | 82 | 55 | 68 | | DMP0808E |
| | 120 | 65 | 93 | | DMP0812E |
| 120 | 160 | 65 | 133 | | DMP0816E |
| | 122 | 105 | 95 | | DMP1212E |
| | 160 | 105 | 132 | | DMP1216E |
| | 200 | 105 | 172 | | DMP1220E |
| 150 | 200 | 133 | 172 | | DMP1520E |
| 160 | 240 | 145 | 213 | | DMP1624E |
| 230 | 300 | 210 | 285 | | DMP2330E |

DR, DIN rail



Description: DIN rail 35 mm for DABP/DPCP boxes.

Material: Steel.

Pack quantity: 1 piece.

| For enclosure | | | Part No. |
|---------------|-----|--|-----------|
| W | H/W | | |
| 82 | | | DR350584E |
| 120/122 | | | DR350964E |
| 160 | | | DR351364E |
| 200 * | | | DR351604E |
| 200 ** | | | DR351764E |
| | 250 | | DR352154E |
| 300 | | | DR352754E |

* DABP152008; ** DABP122009

DFL, Wall mounting brackets



Description: Mounting brackets for wall fixing.

Material: Polycarbonate.

Surface characteristics: RAL 7035.

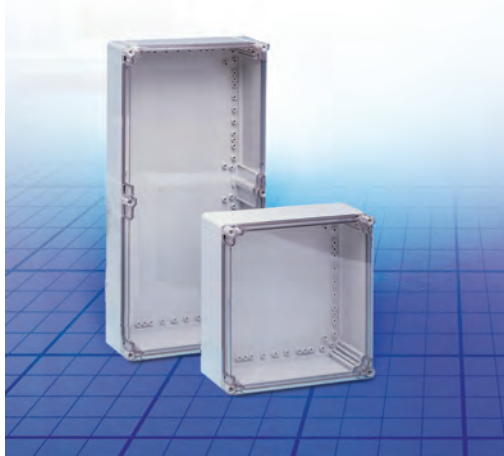
Pack quantity: 4 brackets with mounting accessories.

| Part No. |
|----------|
| DFL1E |



Polycarbonate

OPCP, Polycarbonate



Description: PC box, suitable for outdoor use. High UV radiation resistance.

Material: Polycarbonate.

Gasket: Polyurethane gasket integrated in the box cover.

Temperature resistance: -50°C to +100°C.

Flammability: UL746C5V.

Protection: Complies with IP 66/67.

Finish: RAL 7035

Approvals: GL, FI, GOST. For UL and cUL please contact our sales department.

Delivery: Box body, cover, cover screws made of polyamide and mounting screws.

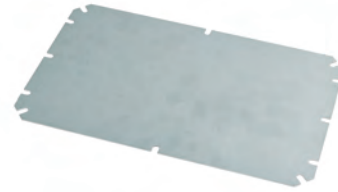
With grey cover

| H | W | D | Weight (g) | Part No. |
|-----|-----|-----|------------|--------------|
| 200 | 200 | 130 | 1039 | OPCP202013GE |
| | 300 | 130 | 1349 | OPCP203013GE |
| | 400 | 130 | 1674 | OPCP204013GE |
| 300 | 300 | 130 | 1738 | OPCP303013GE |
| | 400 | 130 | 2199 | OPCP304013GE |
| 400 | 600 | 130 | 3964 | OPCP406013GE |
| | 300 | 600 | 3000 | OPCP306013GE |

With transparent cover

| H | W | D | Weight (g) | Part No. |
|-----|-----|-----|------------|--------------|
| 200 | 200 | 130 | 1039 | OPCP202013TE |
| | 300 | 130 | 1349 | OPCP203013TE |
| | 400 | 130 | 1674 | OPCP204013TE |
| 300 | 300 | 130 | 1738 | OPCP303013TE |
| | 400 | 130 | 2199 | OPCP304013TE |
| 400 | 600 | 130 | 3000 | OPCP306013TE |
| | 300 | 600 | 3964 | OPCP406013TE |

OMP, Mounting plate



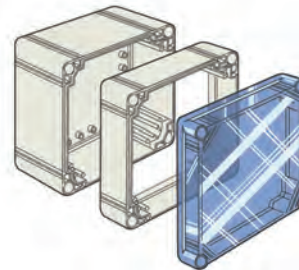
Description: Steel mounting plate for OABP/OPCP boxes.

Material: 1.5 mm galvanized steel.

Pack quantity: 1 piece.

| For enclosure | | | | |
|---------------|-----|-----|-----|----------|
| H | W | h | w | Part No. |
| 200 | 200 | 160 | 160 | OMP2020E |
| | 300 | 160 | 260 | OMP2030E |
| | 400 | 160 | 360 | OMP2040E |
| 300 | 300 | 260 | 160 | OMP3030E |
| | 400 | 260 | 260 | OMP3040E |
| | 600 | 260 | 560 | OMP3060E |
| 400 | 600 | 360 | 560 | OMP4060E |

OPCP-EE, Polycarbonate frame extension



Description: Depth extension frame, to be used when you need more depth than the standard. Can be used in combination with the OPCP range.

Material: Polycarbonate

Pack quantity: 1 piece

| For enclosure | | | |
|---------------|-----|----|--------------|
| H | W | D | Part No. |
| 200 | 200 | 55 | OPCP202006EE |
| | 300 | 55 | OPCP203006EE |
| | 400 | 55 | OPCP204006EE |
| 300 | 300 | 55 | OPCP303006EE |
| | 400 | 55 | OPCP304006EE |
| | 600 | 55 | OPCP306006EE |
| 400 | 600 | 55 | OPCP406006EE |

Polycarbonate

DR3, DIN rail



Description: DIN rail 35 mm for OABP/OPCP boxes.
Material: Steel.
Pack quantity: 1 piece.

| For enclosure | | Part No. |
|---------------|--|-----------|
| W | | |
| 200 | | DR351505E |
| 300 | | DR352505E |
| 400 | | DR353505E |

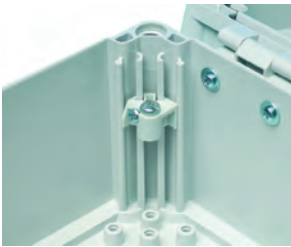
OCP, Cover plugs



Description: Only used in hinged boxes, the standard cover screws are replaced by cover plugs.
Material: Polyethylene.
Pack quantity: 12 pieces.

| Part No. |
|----------|
| OCP1E |

OEL, Mounting plate depth adjustment kit



Description: Allows mounting of mounting plate at any depth. Include M5 bolts.
Pack quantity: OEL1E: 1 piece, and OELA1.04E: 4 pieces.

| Part No. |
|-----------|
| OELA1.04E |
| OEL1E |

OFL, Wall mounting brackets



Description: Mounting brackets for wall fixing. Can be mounted in three different directions, and will support approximately a weight of 60 Kgs.
Material: Polyamide.
Finish: RAL 7035.
Pack quantity: 4 brackets with mounting accessories.

| Part No. |
|----------|
| OFL1E |

