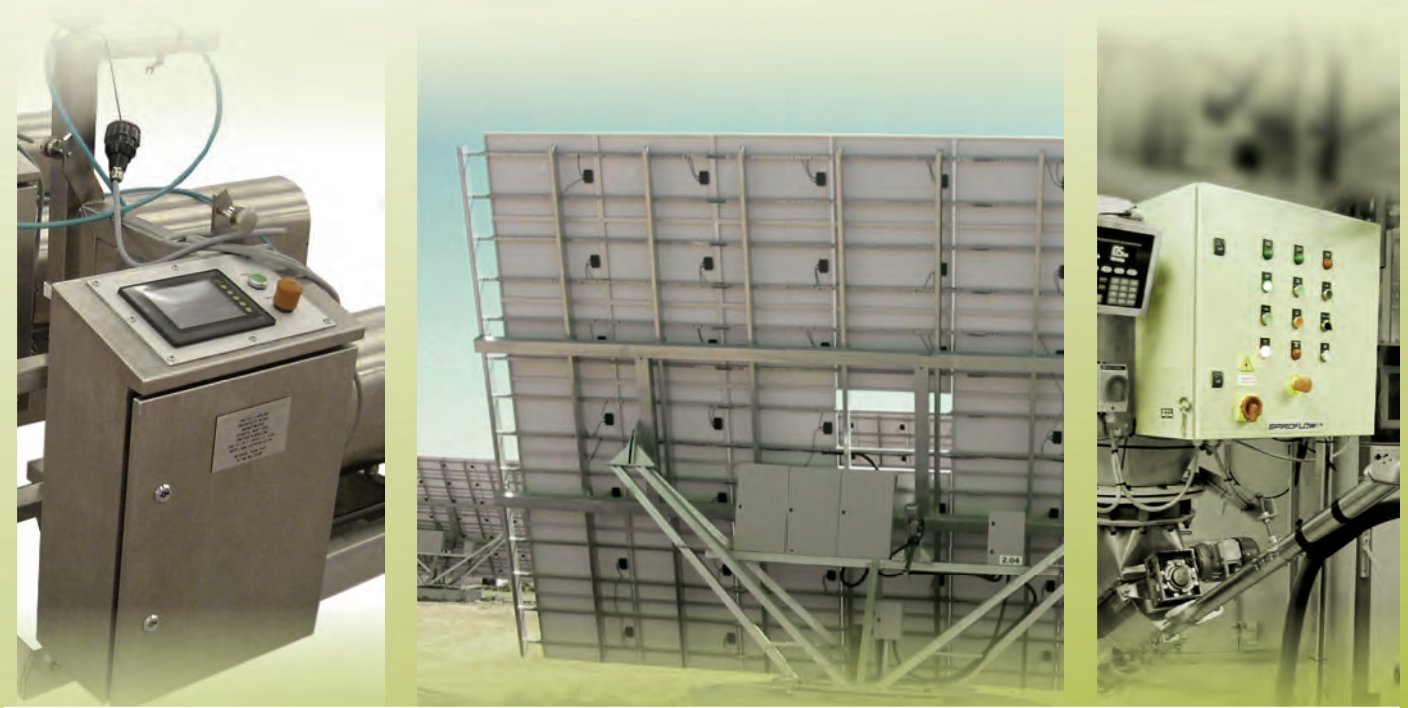


# WALL MOUNTING ENCLOSURES





**MAS** 18  
mild steel

IP 66; NEMA 4, 12, 13  
IK 10  
H: 200-1200  
W: 200-800  
D: 155-400



**MAD** 22  
mild steel

IP 55; NEMA 12,13  
IK 10  
H: 600-1400  
W: 800-1200  
D: 300



**MAP** 24  
mild steel

IP 66; NEMA 4, 12, 13  
IK 10  
H: 300  
W: 600-1200  
D: 300



**ASR** 28  
stainless steel

IP 66; NEMA 4X,12,13  
IK 10  
H: 180-1400  
W: 200-800  
D: 150-400



**ADR** 30  
stainless steel

IP 55; NEMA 12,13  
IK 10  
H: 1000  
W: 1000-1200  
D: 300



**AFS** 32  
stainless steel

IP 66; NEMA 4X,12,13  
IK 10  
H: 300-1400  
W: 200-800  
D: 155-400



**Accessories**

Mounting plates	34
Fixation	36
Doors	37
Locks	40
Rainhoods	42
Plinths	43
Cable management	44
Modular system	50

**General Accessories 286**

# Eldon MultiMount<sup>®</sup> mild steel wall mounting enclosures

## Technical Information

Sturdy cruciform body folded from a cold pressed sheet steel plate, 1.2 / 1.4 / 1.5mm thickness. The enclosure edge is folded in the shape of a channel to avoid water stagnating on the seal. The door is made out of 1.2 / 1.4 / 1.8mm steel and is fitted with galvanized rails in the door above 500mm, procuring cable tracks, profiles, etc., a cable entry plate and a M8 threaded stud for earthing to base, door and mounting plate.

Cable entry is reached by a maximum gland opening, which is placed in the most far back position of the enclosure frame. To allow for air circulation around the rear and for wall fixing, four 20.4mm diameter x 2mm deep depressions are pressed out with an 8.5mm diameter hole.

All parts are pre-treated with iron phosphate, demineralised and protected with a epoxy-polyester powder paint RAL 7035 with structured finish.

The enclosure consists of two parts: the body and the door. The door is secured by means of

two or three hinges and its angle of opening is at least 130°. The hinges are not visible in closed position and are fitted with a captive hinge pin. The direction of turn of the door is left-right and is reversible. The single doors are closed by one, two or three point locking system, the double doors by means of three point espagnolette system. Double grips on the lock housing makes easy opening of the door possible. The door also has a seamless polyurethane gasket.

Standard closing with a double-bit 3mm insert.

The door opens within the outer dimensions of the enclosure body allowing enclosures to be mounted directly next to each other without door interference.

The mounting plate can be set up and wired outside the enclosure. It is placed subsequently in the enclosure:

- either against the rear wall of the enclosure
- or using a mounting kit, which is adjustable in depth.

Furthermore the mounting plate is equipped with side markings every 10mm for easy mounting

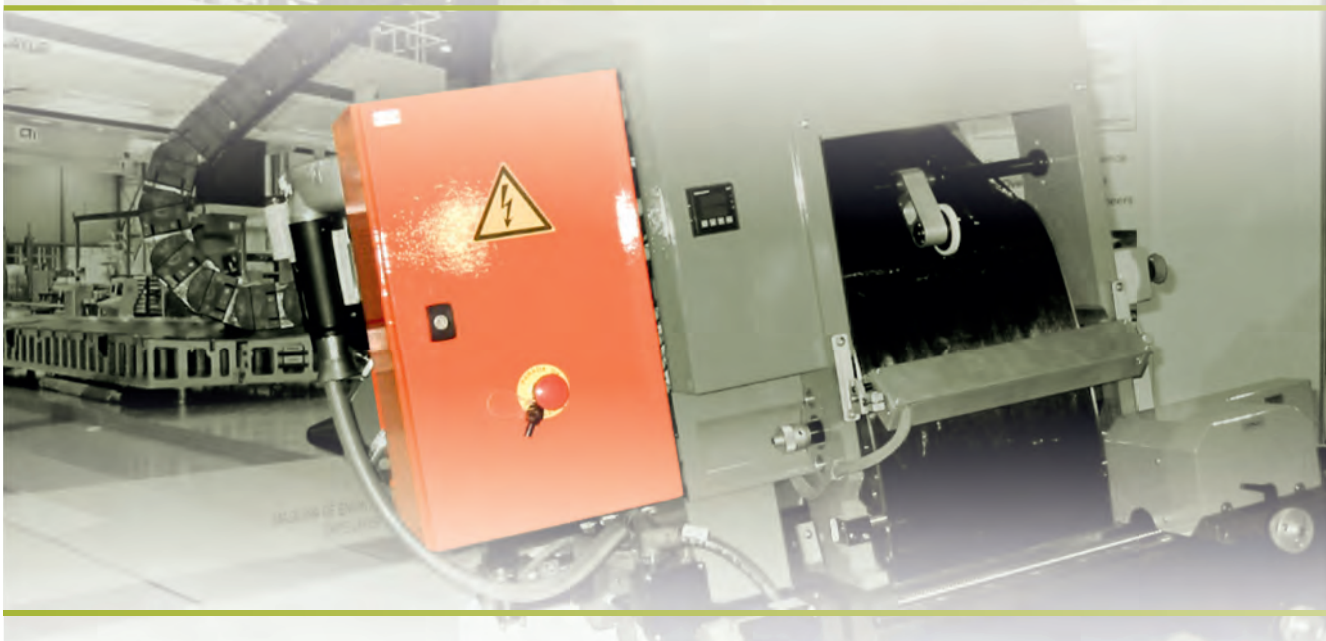
of the equipment on the mounting plate and holes in top and bottom have been applied for cable fixing.

To comply with EMC guidelines, the mounting plate is manufactured from galvanized steel plate 2-2.5mm thick. This plate provides an equipotential mass connection between all devices on the enclosure.

The enclosure offers maximum protection to the user and equipment by a protection degree IP 66 - IK 10 according to IEC 60529 and IEC 50102 (IP 55 - IK 10 for enclosures with double door and enclosures with glazed door). When using an inner door, modular framework or 19" swing frame, protection degree IP20 is guaranteed within the enclosure. Complying with NEMA 4, 12 and 13.

The enclosure is secured to the wall using: bolts, directly through the rear wall and protected inside with plastic washers, or wall mounting brackets at the rear screwed from the enclosure. In both cases the IP / NEMA degrees are guaranteed.

The enclosures have the UL approval, as per UL standard 508A and also comply with the CSA certification mark, as per C22.2 no. 94.



## MultiMount® mild steel wall mounting enclosures



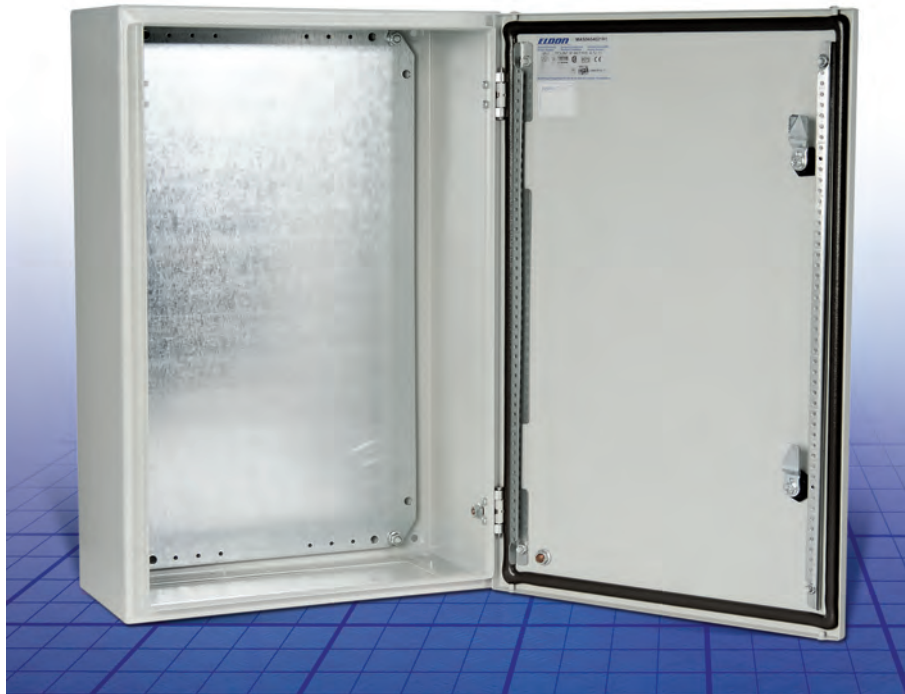
- ◆ Typical applications: heating, ventilation, air conditioning OEM's, small control systems, distribution solutions.
- ◆ One-piece body for optimum rigidity and maximum IP.
- ◆ Multi-purpose: mounting plate, 19 inch profiles, swing frame, modular system.
- ◆ Easy-to-work-with.
- ◆ Large useful mounting space.
- ◆ Easy equipment positioning.
- ◆ Factory customisation.
- ◆ Approvals and certifications.

## Wall Mounting Enclosures

### MAS

#### Mild steel, single door enclosure

The MultiMount range of mild steel IP 66 wall mounting enclosures has been designed with the user in mind. Practical, efficient and with a wide range of standard sizes and accessories available from stock, the MultiMount range offers a solution to virtually every application, or can be easily customised to suit specific requirements.



**MULTIMOUNT**<sup>®</sup>



IP 66/NEMA 4, 12, 13  
IK 10

#### Technical data

**Material:** Body: 1.2mm mild steel / 1.4mm MAS0606021R5 and above / 1.5mm MAS1008026R5 and above, and 400mm depth enclosures. Gland plate: 1.4mm mild steel. Door: 1.2mm mild steel / 1.4mm MAS0606021R5 and above / 1.8mm MAS1006026R5 and above. Mounting plate: 2mm galvanized steel.

**Body:** Folded and seam welded. Four 8.5mm diameter holes for wall fixing, pressed out in 20.4mm diameter x 2mm depressions to allow air circulation around the rear part of the enclosure.

**Door:** Surface mounted with 130° opening. Concealed removable hinges with captive pin. Hinges can be mounted to allow left or right hand opening. From height 300mm and above there are studs to mount door profiles MMDP, and from height 600 and above the profiles are included as standard. Sealing is ensured by an injected one piece polyurethane gasket.

**Lock:** Customised lock with double grip for easy opening of the door. Double-bit 3mm insert and 90° movement. 1000mm high enclosures and above have espagnolette three point locking. Other inserts are available as an accessory.

**Mounting plate:** The mounting plate is marked vertically at 10mm intervals for easy horizontal positioning of equipment. On the top and bottom there are holes to facilitate cable fixing. Fixed onto M8 press welded studs to the rear of the enclosure. All sides from 800mm and above are strengthened by folded edges. By using the AMG accessory the mounting plate position can be adjusted to any depth.

**Gland Plate Opening:** Situated at the far rear of the enclosure to make cabling onto the mounting plate easier.

**Protection:** Complies with IP 66, and NEMA 4, 12 and 13. For outdoor installation the use of rain hood ARF is recommended, and the corrosion resistance must be taken into consideration.

**Finish:** RAL 7035 structure powder coating.

**Delivery:** Enclosure with door, and two door mounting profiles from size MAS0604015R5 and above. Gland plate(s) with gasket(s), plastic double-bit 3mm key, and mounting accessories. Earthing facilities.



# Wall Mounting Enclosures

MAS, IP 66/NEMA 4, 12, 13 IK 10

With mounting plate

Enclosure dimension			Mounting plate dimension			Gland plate openings					Part No.
H	W	D	h	w	d	Size	Type	Openings	N° of locks		
200	200	155	170	150	137	110x56	0S	1	1	MAS0202015R5	
250	200	155	220	150	137	110x56	0S	1	1	MAS0252015R5	
	250	155	220	200	137	110x56	0S	1	1	MAS0252515R5	
300	250	155	270	200	137	110x56	0S	1	1	MAS0302515R5	
		210	270	200	192	110x56	0S	1	1	MAS0302521R5	
	300	155	270	250	137	210x56	1S	1	1	MAS0303015R5	
		210	270	250	192	210x96	1	1	1	MAS0303021R5	
350	250	155	320	200	137	110x56	0S	1	1	MAS0352515R5	
400	300	155	370	250	137	210x56	1S	1	1	MAS0403015R5	
		210	370	250	192	210x96	1	1	1	MAS0403021R5	
	400	210	370	350	192	310x96	2	1	1	MAS0404021R5	
	500	210	370	450	192	410x96	3	1	1	MAS0405021R5	
	600	210	370	550	192	510x96	4	1	1	MAS0406021R5	
500	300	210	470	250	192	210x96	1	1	1	MAS0503021R5	
	400	155	470	350	137	310x56	2S	1	1	MAS0504015R5	
		210	470	350	192	310x96	2	1	1	MAS0504021R5	
		260	470	350	242	310x96	2	1	1	MAS0504026R5	
		300	470	350	282	310x96	2	1	1	MAS0504030R5	
	500	210	470	450	192	410x96	3	1	1	MAS0505021R5	
	300	470	450	282	410x96	3	1	1	1	MAS0505030R5	
600	400	155	570	350	137	310x56	2S	1	2	MAS0604015R5	
		210	570	350	192	310x96	2	1	2	MAS0604021R5	
		260	570	350	242	310x96	2	1	2	MAS0604026R5	
		300	570	350	282	310x96	2	1	2	MAS0604030R5	
	500	155	570	450	137	410x56	3S	1	2	MAS0605015R5	
		210	570	450	192	410x96	3	1	2	MAS0605021R5	
		260	570	450	242	410x96	3	1	2	MAS0605026R5	
		300	570	450	282	410x96	3	1	2	MAS0605030R5	
	600	210	570	550	192	510x96	4	1	2	MAS0606021R5	
		300	570	550	282	510x96	4	1	2	MAS0606030R5	
		400	570	550	382	510x96	4	1	2	MAS0606040R5	
	800	300	570	750	282	310x96	2	2	2	MAS0608030R5	
700	500	210	670	450	192	410x96	3	1	2	MAS0705021R5	
		260	670	450	242	410x96	3	1	2	MAS0705026R5	
800	400	300	770	350	282	310x96	2	1	2	MAS0804030R5	
	600	210	770	550	192	510x96	4	1	2	MAS0806021R5	
		260	770	550	242	510x96	4	1	2	MAS0806026R5	
		300	770	550	282	510x96	4	1	2	MAS0806030R5	
		400	770	550	382	510x96	4	1	2	MAS0806040R5	
	800	210	770	750	192	310x96	2	2	2	MAS0808021R5	
		300	770	750	282	310x96	2	2	2	MAS0808030R5	
		400	770	750	382	310x96	2	2	2	MAS0808040R5	
1000	600	260	970	550	242	510x96	4	1	1*	MAS1006026R5	
		300	970	550	282	510x96	4	1	1*	MAS1006030R5	
	800	260	970	750	242	310x96	2	2	1*	MAS1008026R5	
		300	970	750	282	310x96	2	2	1*	MAS1008030R5	
		400	970	750	382	310x96	2	2	1*	MAS1008040R5	
1200	600	300	1170	550	282	510x96	4	1	1*	MAS1206030R5	
	800	300	1170	750	282	310x96	2	2	1*	MAS1208030R5	
		400	1170	750	382	310x96	2	2	1*	MAS1208040R5	

\* 3 point espagnolette locking.



# Wall Mounting Enclosures

MAS, IP 66/NEMA 4, 12, 13 IK 10

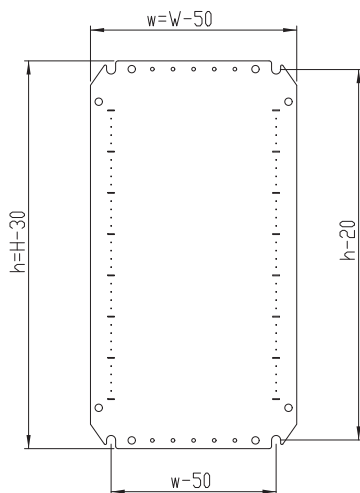
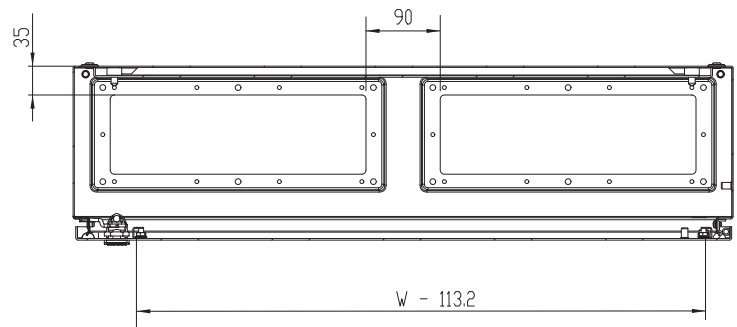
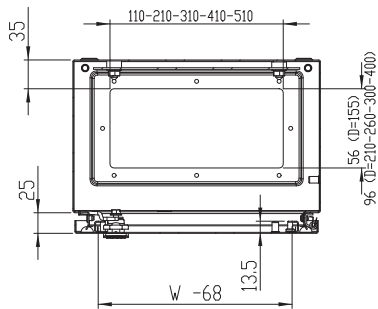
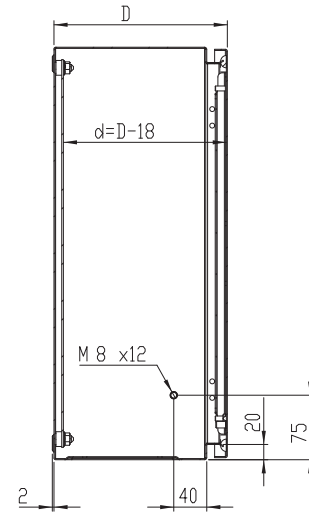
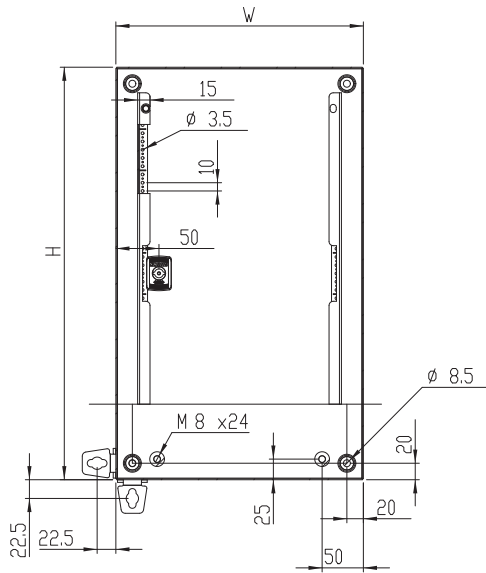
Without mounting plate

Enclosure dimension			Gland plate openings				Part No.
H	W	D	Size	Type	Openings	N° of locks	
200	200	155	110x56	0S	1	1	MAS0202015PER5
250	200	155	110x56	0S	1	1	MAS0252015PER5
	250	155	110x56	0S	1	1	MAS0252515PER5
300	250	155	110x56	0S	1	1	MAS0302515PER5
		210	110x56	0S	1	1	MAS0302521PER5
	300	155	210x56	1S	1	1	MAS0303015PER5
		210	210x96	1	1	1	MAS0303021PER5
350	250	155	110x56	0S	1	1	MAS0352515PER5
400	300	155	210x56	1S	1	1	MAS0403015PER5
		210	210x96	1	1	1	MAS0403021PER5
	400	210	310x96	2	1	1	MAS0404021PER5
		500	410x96	3	1	1	MAS0405021PER5
		600	510x96	4	1	1	MAS0406021PER5
500	300	210	210x96	1	1	1	MAS0503021PER5
	400	155	310x56	2S	1	1	MAS0504015PER5
		210	310x96	2	1	1	MAS0504021PER5
		260	310x96	2	1	1	MAS0504026PER5
		300	310x96	2	1	1	MAS0504030PER5
	500	210	410x96	3	1	1	MAS0505021PER5
		300	410x96	3	1	1	MAS0505030PER5
600	400	155	310x56	2S	1	2	MAS0604015PER5
		210	310x96	2	1	2	MAS0604021PER5
		260	310x96	2	1	2	MAS0604026PER5
		300	310x96	2	1	2	MAS0604030PER5
	500	155	410x56	3S	1	2	MAS0605015PER5
		210	410x96	3	1	2	MAS0605021PER5
		260	410x96	3	1	2	MAS0605026PER5
		300	410x96	3	1	2	MAS0605030PER5
	600	210	510x96	4	1	2	MAS0606021PER5
		300	510x96	4	1	2	MAS0606030PER5
		400	510x96	4	1	2	MAS0606040PER5
	800	300	310x96	2	2	2	MAS0608030PER5
700	500	210	410x96	3	1	2	MAS0705021PER5
		260	410x96	3	1	2	MAS0705026PER5
800	400	300	310x96	2	1	2	MAS0804030PER5
	600	210	510x96	4	1	2	MAS0806021PER5
		260	510x96	4	1	2	MAS0806026PER5
		300	510x96	4	1	2	MAS0806030PER5
		400	510x96	4	1	2	MAS0806040PER5
	800	210	310x96	2	2	2	MAS0808021PER5
		300	310x96	2	2	2	MAS0808030PER5
		400	310x96	2	2	2	MAS0808040PER5
1000	600	260	510x96	4	1	1*	MAS1006026PER5
		300	510x96	4	1	1*	MAS1006030PER5
	800	260	310x96	2	2	1*	MAS1008026PER5
		300	310x96	2	2	1*	MAS1008030PER5
		400	310x96	2	2	1*	MAS1008040PER5
1200	600	300	510x96	4	1	1*	MAS1206030PER5
	800	300	310x96	2	2	1*	MAS1208030PER5
		400	310x96	2	2	1*	MAS1208040PER5

\* 3 point espagnolette locking.



## Dimensions





## Wall Mounting Enclosures

### MAD

#### Mild steel, double door enclosure

The MultiMount range of mild steel wall mounting enclosures is also available in double door versions, and complies with IP 55. There are 5 sizes available and a range of accessories. The standard finish is RAL 7035, although other colours and sizes are available on request.



**MultiMount**<sup>®</sup>



IP 55 / NEMA 12,13  
IK 10

#### Technical data

**Material:** Body: 1.4mm mild steel MAD0608030R5 / 1.5mm MAD0801230R5 and above. Gland plate: 1.4mm mild steel. Doors: 1.4mm mild steel / 1.8mm MAD0801230R5 and above. Mounting plate: 2mm galvanized steel / 2.5mm MAD1001030R5 and above.

**Body:** Folded and seam welded. Four 8.5mm diameter holes for wall fixing, pressed out in 20.4mm diameter x 2mm depressions to allow air circulation around the rear part of the enclosure.

**Door:** Surface mounted with 130° opening. Concealed removable hinges with captive pin. Two removable mounting profiles in the right hand door. Sealing is ensured by an extruded one piece polyurethane gasket.

**Lock:** Customised lock with double grip for easy opening of the door, double-bit 3mm insert and 90° movement. Espagnolette three point locking. Other inserts are available as an accessory.

**Mounting plate:** The mounting plate is marked vertically at 10mm intervals for easy horizontal positioning of equipment.

On the top and bottom there are holes to facilitate cable fixing. Fixed onto M8 press welded studs to the rear of the enclosure. All sides from 800mm and above are strengthened by folded edges. By using the AMG accessory the mounting plate position can be adjusted to any depth.

**Gland Plate Opening:** Situated at the far rear of the enclosure to make cabling onto the mounting plate easier.

**Protection:** Complies with IP 55, and NEMA 12, 13. For outdoor installation the use of rain hood ARF is recommended, and the corrosion resistance must be taken in consideration.

**Finish:** RAL 7035 structure powder coating.

**Delivery:** Enclosure with doors, and two door mounting profiles on the right door. Gland plate(s) with gasket(s), plastic DIN 3mm key, and mounting accessories. Earthing facilities.



# Wall Mounting Enclosures

MAD, IP 55 / NEMA 12,13 IK 10

With mounting plate

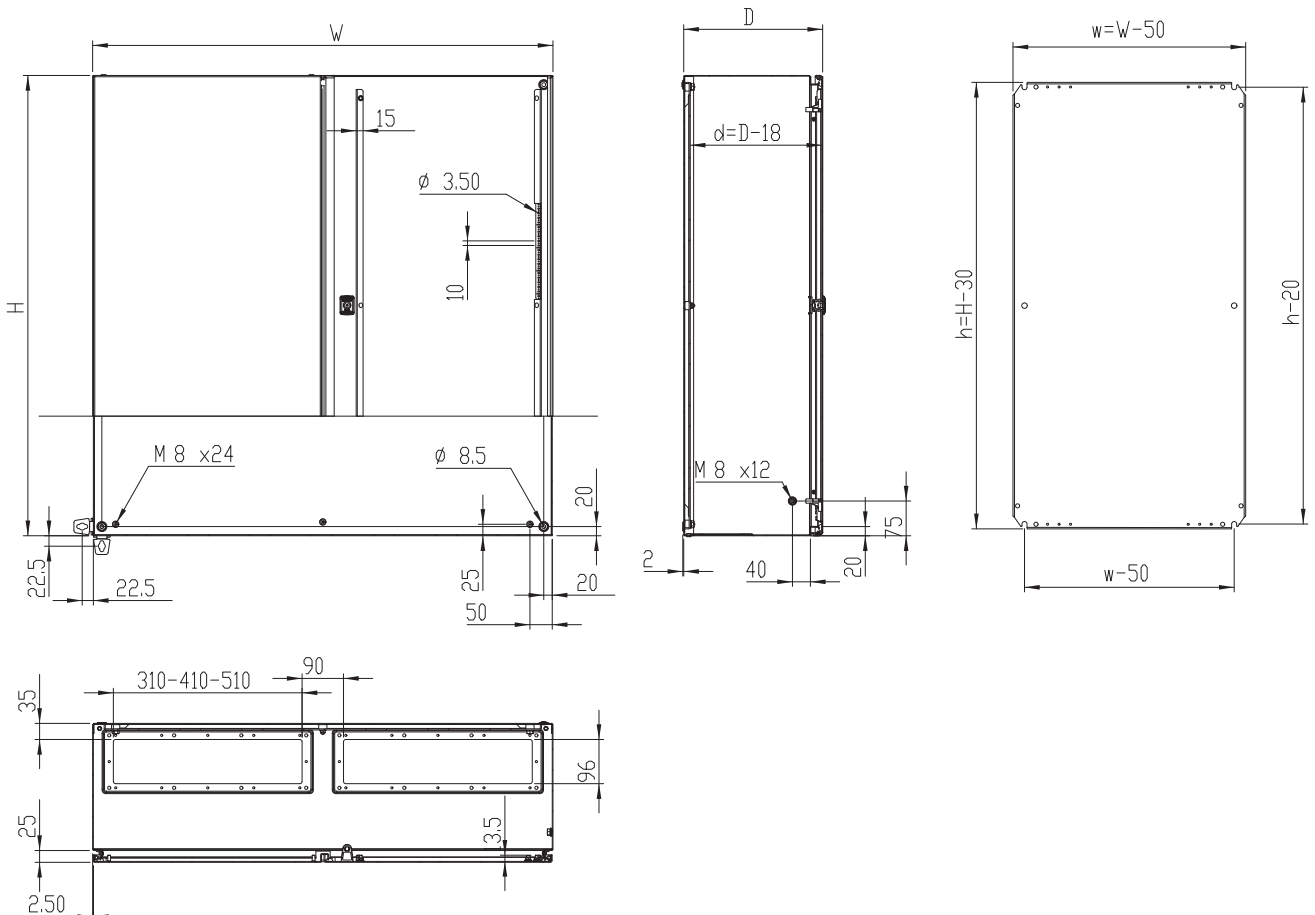
Enclosure dimension			Mounting plate dimension			Gland plate openings					Part No.
H	W	D	h	w	d	Size	Type	Openings	N° of locks		
600	800	300	570	750	282	310x96	2	2	1*	MAD0608030R5	
800	1200	300	770	1150	282	510x96	4	2	1*	MAD0801230R5	
1000	1000	300	970	950	282	410x96	3	2	1*	MAD1001030R5	
1200	1000	300	1170	950	282	410x96	3	2	1*	MAD1201030R5	
1400	1000	300	1370	950	282	410x96	3	2	1*	MAD1401030R5	

Without mounting plate

Enclosure dimension			Gland plate openings					Part No.
H	W	D	Size	Type	Openings	N° of locks		
600	800	300	310x96	2	2	1*	MAD0608030PER5	
800	1200	300	510x96	4	2	1*	MAD0801230PER5	
1000	1000	300	410x96	3	2	1*	MAD1001030PER5	
1200	1000	300	410x96	3	2	1*	MAD1201030PER5	
1400	1000	300	410x96	3	2	1*	MAD1401030PER5	

\* 3 point espagnolette locking.

## Dimensions

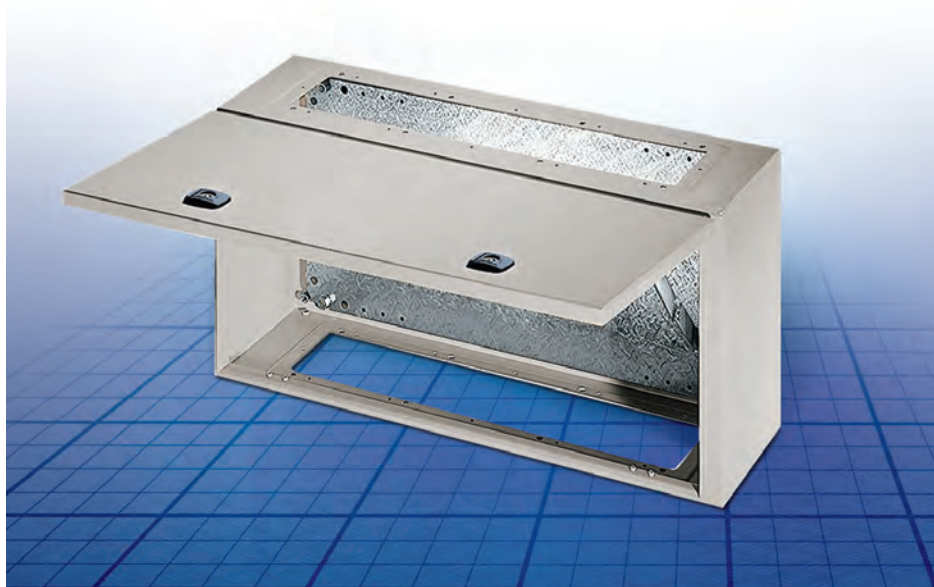


## Wall Mounting Enclosures

### MAP

#### Mild steel panel

The MAP is an incredibly versatile enclosure, for use in either stand alone applications, or in conjunction with MAS/MAD as a cableway.



**MULTIMOUNT®**



IP 66 / NEMA 4, 12, 13  
IK 10

#### Technical data

**Material:** Body: 1.4mm mild steel. Panel: 1.4mm mild steel. Mounting plate: 2mm galvanized steel.

**Body:** Folded and seam welded. Four 8.5mm diameter holes for wall fixing pressed out in 20.4mm diameter x 2mm depressions to allow air circulation around the rear part of the enclosure.

**Front panel:** Surface mounted with 90° opening. Concealed removable hinges with captive pin. Hinges can be mounted to allow top or bottom opening. Mechanical door stop keeps panel open. One removable mounting profile on the hinge side. Sealing is ensured by an extruded one piece polyurethane gasket.

**Lock:** Customised lock with double grip for easy opening of the panel. double-bit 3mm insert and 90° movement. Other inserts are available as an accessory.

**Mounting plate:** The mounting plate is marked vertically at 10mm intervals for easy horizontal positioning of equipment. On the top and bottom there are holes to facilitate cable fixing. Fixed onto M8 press welded studs to the rear of the enclosure.

All sides from 800mm and above are strengthened by folded edges. By using the AMG accessory the mounting plate position can be adjusted to any depth.

**Gland Plate Opening:** In top and bottom. Situated at the far rear of the enclosure to make cabling onto the mounting plate easier. Gland plates (AF) and gaskets (AG) are not included. The gland plates used are those delivered with the MAS or MAD enclosures.

**Protection:** Mounted stand alone complies with IP 66, and NEMA 4, 12 and 13, as long as you mount the gland plate(s) and gasket(s), supplied as an accessory. Combined with MAS or MAD complies with IP 55 and NEMA 12. For outdoor installation the use of rain hood ARF is recommended, and the corrosion resistance must be taken in consideration.

**Finish:** RAL 7035 structure powder coating.

**Delivery:** Enclosure with panel, and one panel mounting profile. Plastic double-bit 3mm key, and mounting accessories. Earthing facilities.



# Wall Mounting Enclosures

MAP, IP 66 / NEMA 4, 12, 13 IK 10

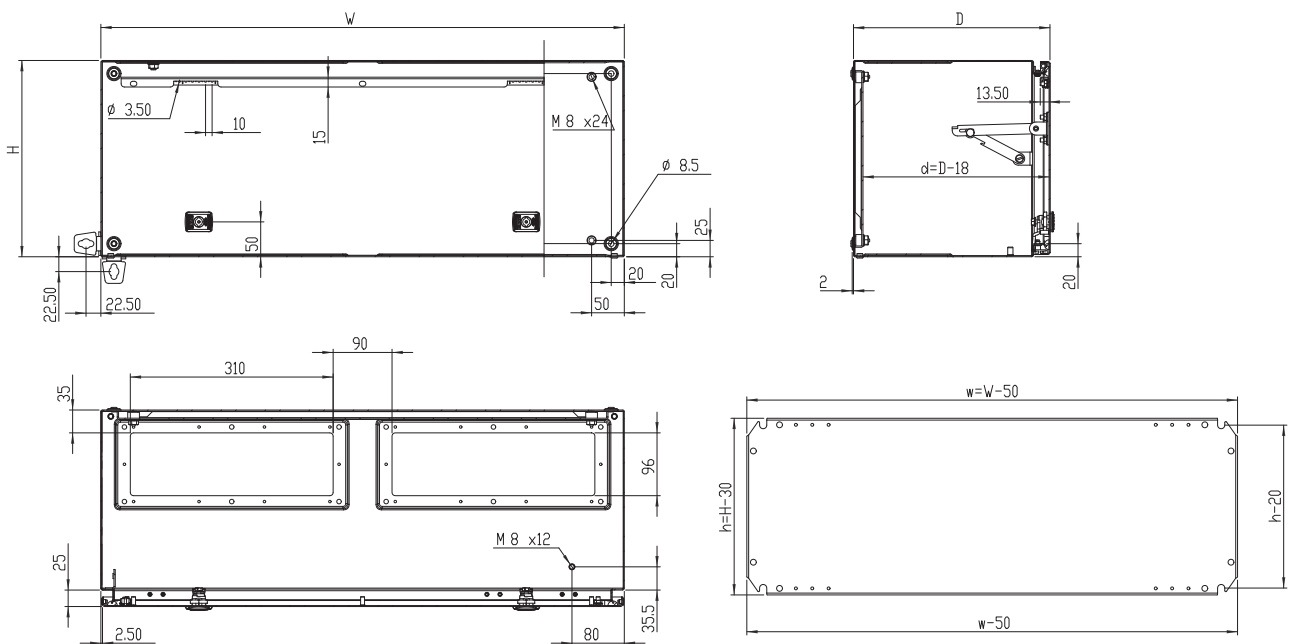
With mounting plate

Enclosure dimension			Mounting plate dimension			Gland plate openings				Part No.
H	W	D	h	w	d	Size	Type	Openings	N° of locks	
300	600	300	270	550	282	510x96	4	1 + 1	2	MAP0306030R5
	800	300	270	750	282	310x96	2	2 + 2	2	MAP0308030R5
	1000	300	270	950	282	410x96	3	2 + 2	2	MAP0310030R5
	1200	300	270	1150	282	510x96	4	2 + 2	2	MAP0312030R5

Without mounting plate

Enclosure dimension			Gland plate openings				Part No.
H	W	D	Size	Type	Openings	N° of locks	
300	600	300	510x96	4	1 + 1	2	MAP0306030PER5
	800	300	310x96	2	2 + 2	2	MAP0308030PER5
	1000	300	410x96	3	2 + 2	2	MAP0310030PER5
	1200	300	510x96	4	2 + 2	2	MAP0312030PER5

## Dimensions



# Eldon MultiMount<sup>®</sup> stainless steel wall mounting enclosures

## Technical Information

Sturdy cruciform body folded from cold pressed 1/1.5mm pre-grained AISI 304 / AISI 316L stainless steel. The enclosure edge is folded in the shape of a channel to avoid water stagnating on the seal.

The door is made out 1.5/2mm pre-grained AISI 304 / AISI 316L stainless steel with M6 studs allowing mounting of MMDP profiles (accessory) for easy installation of cable tracks, profiles, etc. Body and door are provided with M8 threaded studs for earthing connection.

The enclosure has external a pre-grained finish, which gives the product an aesthetically and highly professional appearance.

Finish of the outer door and body 240s pre grained (average 0.5 microns), which makes it highly suitable for the food industries (HACCP).

The enclosure consists of two parts: the base and the door. The door is secured by means of two or three stainless steel hinges and its angle of opening is at least 130°. The hinges are not visible in closed position and are fitted with a captive hinge pin. The opening direction of the door is left-right and is reversible.

The single doors are closed by one, two or three point locking system, the double doors by means of three point espagnolette system. The door also has a seamless polyurethane gasket.

The chrome plated Eldon customized 3mm double-bit lock with 90-degree movement can be interchanged with other inserts.

The door opens within the outer dimensions of the enclosure body allowing enclosures to be mounted directly next to each other without the door interference.

The mounting plate can be set up and wired outside the enclosure. It is placed subsequently

in the enclosure:

- either against the rear wall of the enclosure
- or using a mounting kit, which is adjustable in depth.

Furthermore the mounting plate is equipped with side markings every 10mm for easy mounting of the equipment on the mounting plate and holes in top and bottom have been applied for cable fixing.

To comply with EMC guidelines, the mounting plate is manufactured from Sendzimir zinc-plated steel plate 2-2.5mm thick. This plate provides an equipotential mass connection between all devices in the enclosure.

The enclosure offers maximum protection to the user and equipment by a protection degree IP 66 - IK 10 as per IEC 60529 and NBN G20- 001 (IP 55 - IK 10 for enclosures with double door and enclosures with glazed door). When using an interior door or modular framework or 19" swing frame, protection degree IP 20 is guaranteed within the enclosure. Complying with NEMA 4x, 12 and 13.

Possibility for integrated sloping and overhanging roof is one of the standard options especially designed for harsh environments.

The enclosures have the UL approval, as per UL standard 508 and also comply with the CSA certification mark, as per C22.2 no. 94.



## MultiMount® stainless steel wall mounting enclosures



- ◆ The enclosure edge is folded in the shape of a channel to avoid water stagnation on the seal.
- ◆ Finely pre-grained surface finish (240s).
- ◆ Threaded studs to assist with equipment mounting.
- ◆ Polyurethane one piece gasket provides a continuous seal that maximizes the IP rating.
- ◆ Concealed hinges providing 130 degree opening and cleanliness of design.
- ◆ Multi-purpose: mounting plate, 19 inch profiles, swing frame.
- ◆ Sturdy monoblock body.
- ◆ Approvals and certifications.

## Wall Mounting Enclosures

### ASR

#### Stainless steel single door enclosure

The Eldon ASR range, designed with cleanliness and ingress protection in mind, provides high resistance to corrosion and ensures performance of equipment. Intended for harsh environments, the ASR range is the ideal solution for food and chemical industries, pharmaceutical plants, outdoor applications and marine environments.



**MULTIMOUNT®**



IP 66/NEMA 4X, 12, 13  
IK10

#### Technical data

**Material:** AISI 304 / AISI 316L pre-grained stainless steel

Body: 1.0mm/ 1.5mm ASR0406021 and larger

Door: 1.5mm/ 2mm ASR 1008030 and larger

Mounting plate: 2.0mm galvanized steel.

**Frame:** Monoblock body, folded and seam welded.

**Door:** Corner formed in one piece. Surface mounted with 130° opening. Concealed AISI 304 stainless steel hinges with removable pin. Can be mounted to give left or right hand opening. Sealing is ensured by an injected one piece polyurethane gasket. Inside of door fitted with four welded studs for equipment profiles.

**Lock:** Eldon customized chrome plated double-bit 3mm lock with 90° movement and anti-vibration mechanism. 1000mm high enclosures and above have espagnolette three point locking. Stainless steel lock and other versions are available as accessories.

**Mounting plate:** Fixed onto M8 studs welded to the rear of the enclosure.

In enclosures with height or width of 800mm or more, the mounting plate has a fold to all four sides for extra rigidity. By using the AMG accessory the mounting plate can be adjusted in depth.

**Cable access:** No gland plate openings as standard to maximise sealing and clean lines.

**Protection:** Corresponds with IP 66 and NEMA 4X, 12 and 13, IK 10.

**Finish:** 240s pre grained stainless steel (average 0.5 micron).

**Delivery:** Mounting plate, complete with fitting accessories and earthing facilities. Packaged in a reusable carton.

**Additional information:** The use of Thermal Management Equipment, venting and rainhoods is advised for harsh and outdoor applications. Please see our general accessories section and Technical chapter for additional information.



# Wall Mounting Enclosures

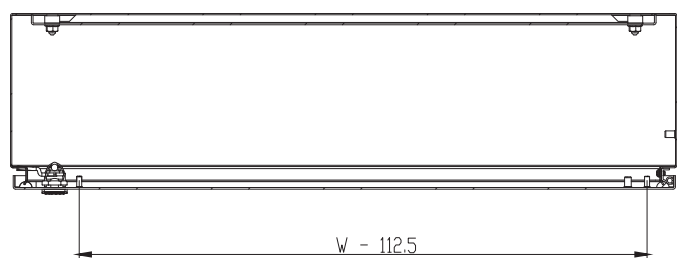
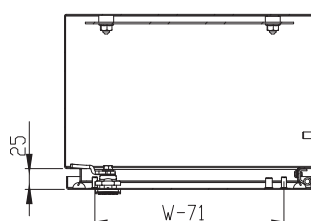
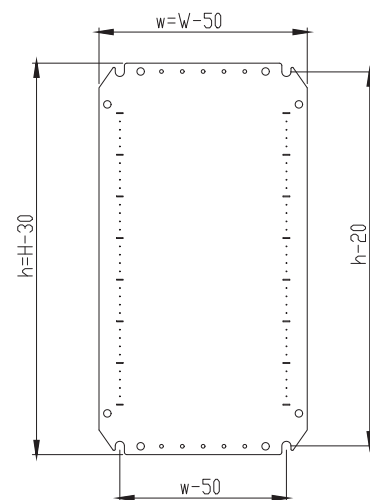
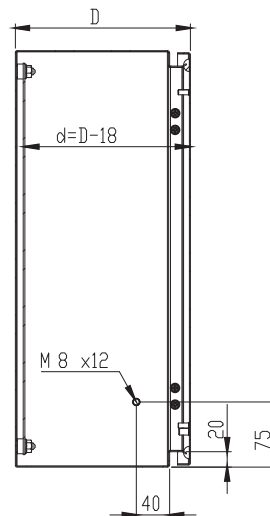
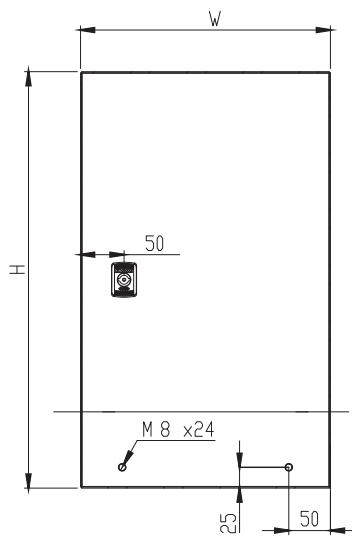
ASR, IP 66/NEMA 4X,12,13, IK10

With mounting plate

Enclosure dimension			Mounting plate dimension			N° of locks	Usable depth	Weight	Part No. AISI 304	Part No. AISI 316L
H	W	D	h	w						
180	240	150	150	190	1	130	2,5	ASR0182415	ASR0182415-316	
240	240	150	210	190	1	130	3,2	ASR0242415	ASR0242415-316	
	360	150	210	310	1	130	5,0	ASR0243615	ASR0243615-316	
300	200	150	270	150	1	130	4,5	ASR0302015	ASR0302015-316	
360	240	150	330	190	1	130	5,0	ASR0362415	ASR0362415-316	
400	300	150	370	250	1	130	8,3	ASR0403015	ASR0403015-316	
	400	210	370	350	1	190	11,2	ASR0404021	ASR0404021-316	
600	210	370	550	550	1	190	15,8	ASR0406021	ASR0406021-316	
500	400	210	470	350	2	190	16,0	ASR0504021	ASR0504021-316	
	500	210	470	450	2	190	17,0	ASR0505021	ASR0505021-316	
600	400	210	570	350	2	190	15,8	ASR0604021	ASR0604021-316	
	600	210	570	550	2	190	22,2	ASR0606021	ASR0606021-316	
		300	570	550	2	280	25,2	ASR0606030	ASR0606030-316	
		800	570	750	2	280	32,4	ASR0608030	ASR0608030-316	
800	600	210	770	550	2	190	28,6	ASR0806021	ASR0806021-316	
		300	770	550	2	280	32,3	ASR0806030	ASR0806030-316	
	800	300	770	750	2	280	42,0	ASR0808030	ASR0808030-316	
1000	800	300	970	750	1*	280	51,5	ASR1008030	ASR1008030-316	
1200	800	300	1170	750	1*	280	59,5	ASR1208030	ASR1208030-316	
		400	1170	750	1*	380	62,3	ASR1208040	ASR1208040-316	
1400	800	400	1370	750	1*	380	78,1	ASR1408040	ASR1408040-316	

\* 3 point espagnolette locking.

## Dimensions



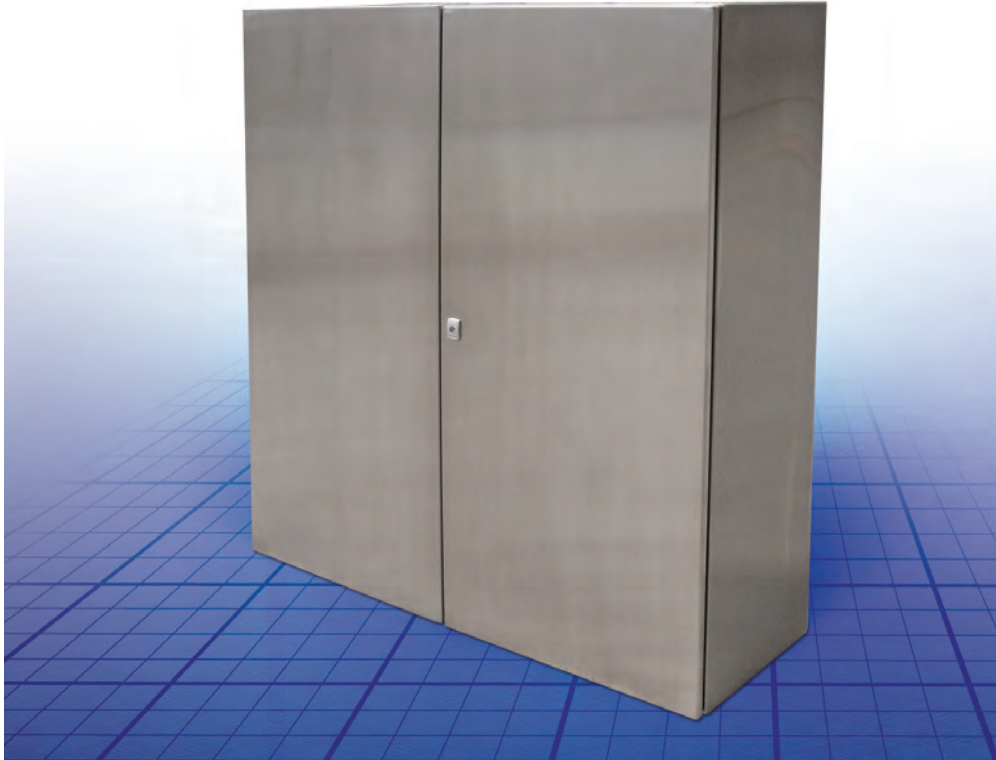


## Wall Mounting Enclosures

### ADR

#### Stainless steel double door enclosure

The Eldon ADR range, designed with cleanliness and ingress protection in mind, provides high resistance to corrosion and ensures performance of equipment. Intended for harsh environments, the ADR range is the ideal solution for food and chemical industries, pharmaceutical plants, outdoor applications and marine environments.



**MULTIMOUNT®**



IP 55/NEMA 12, 13  
IK10

#### Technical data

**Material:** AISI 304 / AISI 316L pre-grained stainless

Body: 1.5mm. Door: 2,0mm.

Mounting plate: 2.5mm galvanized steel.

**Body:** Monoblock body, folded and seam welded.

**Door:** Corner formed in one piece. Surface mounted with 130° opening. Concealed AISI 304 stainless steel hinges with removable pin. Inside of door carries four welded studs for equipment profiles. Sealing is ensured by an injected one piece polyurethane gasket.

**Lock:** Eldon customized chrome plated double-bit 3mm lock with 90° movement and anti-vibration mechanism. Espagnolette three points locking. Stainless steel lock and other versions are available as accessories.

**Mounting plate:** Fixed onto M8 studs welded to the rear of the enclosure. In enclosures with height or width of 800mm or more, the mounting plate has a fold to all four sides for extra rigidity. By using the AMG accessory the mounting plate can be adjusted in depth.

**Finish:** 240s pre grained stainless steel (average 0.5 micron).

**Protection:** Corresponds with IP55 and NEMA 12,13, IK10.

**Delivery:** Mounting plate, complete with fitting accessories and earthing facilities. Packaged in a reusable carton.

**Additional information:** The use of Thermal Management Equipment, venting and rainhoods is advised for harsh and outdoor applications Please see our general accessories section and Technical chapter for additional information.



# Wall Mounting Enclosures

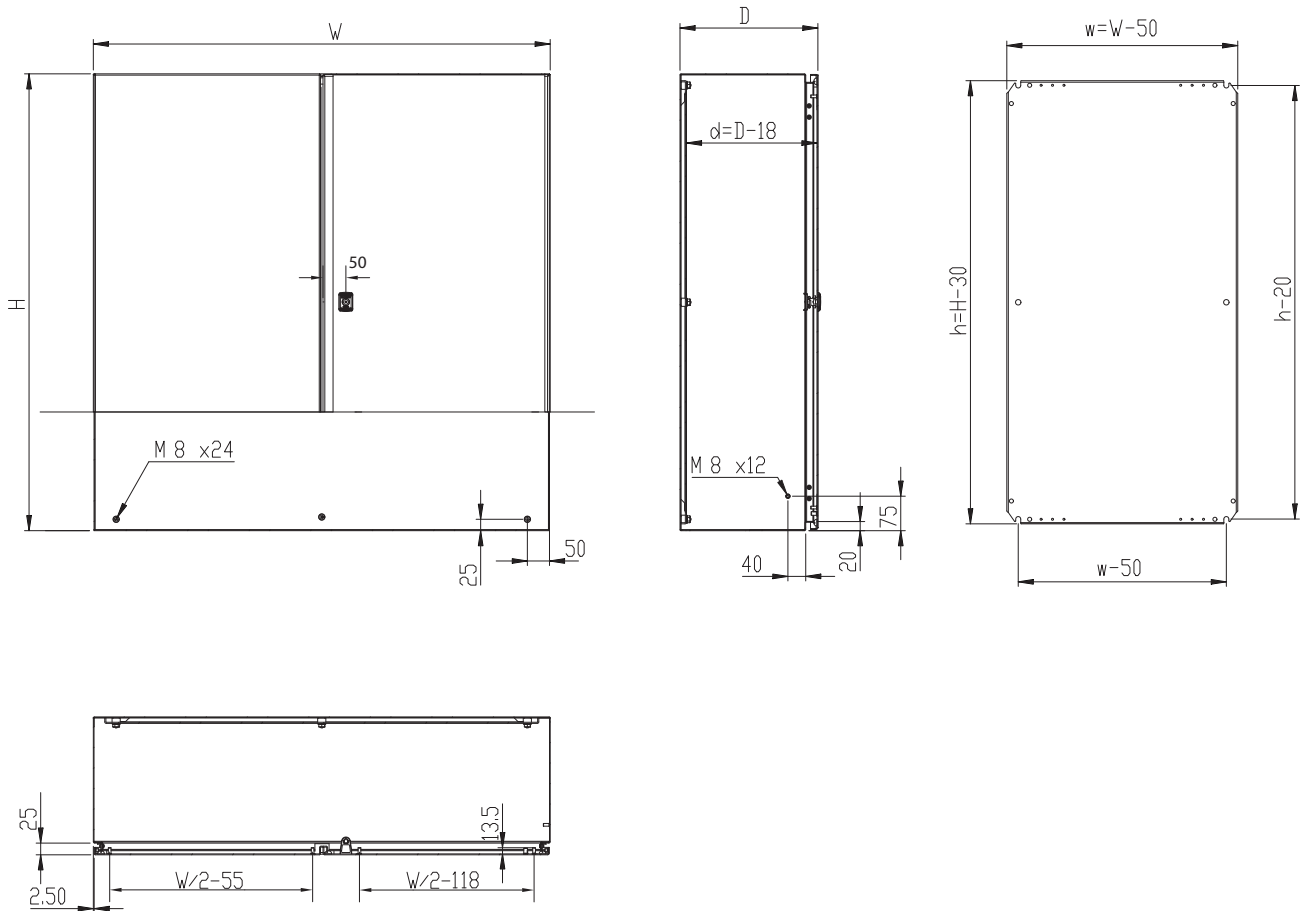
ADR, IP 55/NEMA 12, 13, IK10

With mounting plate

Enclosure dimension			Mounting plate dimension			N° of locks	Usable depth	Weight	Part No. AISI 304	Part No. AISI 316L
H	W	D	h	w						
1000	1000	300	970	950	1*	280	59,5	ADR1001030	ADR1001030-316	
	1200	300	970	1150	1*	280	69,7	ADR1001230	ADR1001230-316	

\* 3 point espagnolette locking.

## Dimensions

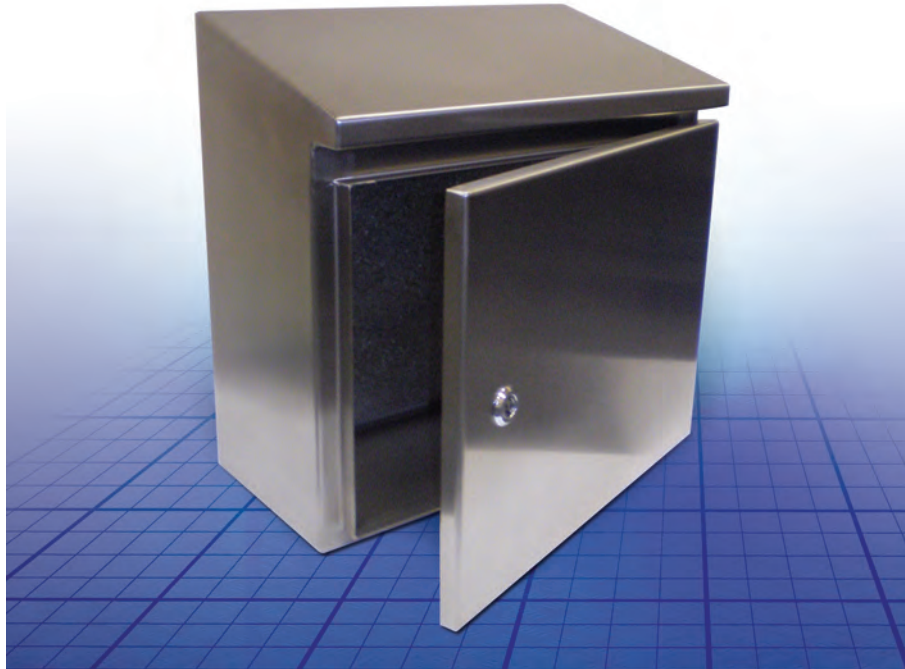


## Wall Mounting Enclosures

### AFS

#### Stainless steel single door with integrated rain hood enclosure

The Eldon AFS finely pre-grained finish and a design intended to eliminate microbiological traps, combines to provide the ultimate enclosure for environments where the hygienic requirements are strict. An integral sloping roof offers additional protection and leads to self-draining of liquids. The AFS range is the ideal solution for food and beverage industries, biotechnical laboratories and pharmaceutical plants.



IP 66/NEMA4x ,12,13  
IK 10

#### Technical data

**Material:** AISI 304 pre-grained stainless steel/AISI 316L (on request).  
**Body:** 1.5mm, **Door:** 1.5mm/2 mm on AFS 10083 and larger.  
**Mounting plate:** 2.0mm galvanized steel.  
**Body:** The top of the body is equipped with a sloping roof at an angle of between 8 and 20 degrees sloping towards the front, giving a 10 mm overhang to remove any liquids away from the door. Folded and seam welded.  
**Door:** Corner formed in one piece. Surface mounted with 130° opening. Concealed AISI 304 stainless steel hinges with removable pin. Can be mounted to give left or right hand opening (Machining is required). Sealing is ensured by an injected one piece polyurethane gasket. Inside of door fitted with four welded studs for equipment profiles.  
**Lock:** Chrome plated double-bit 3mm lock with 90° movement. Stainless steel lock and other locks available on request.

**Mounting plate:** Fixed onto M8 studs welded to the rear of the enclosure. In enclosures with height or width of 800 mm or more, the mounting plate has a fold to all four sides for extra rigidity. By using the AMG accessory the mounting plate can be adjusted in depth.

**Cable access:** No gland openings as standard to maximise the sealing and clean lines according to the HACCP.  
**Protection:** Corresponds with IP 66 and NEMA 4X, 12, 13, IK10  
**Finish:** 240s pre grained stainless steel (average 0.5 micron).  
**Delivery:** Mounting plate, complete with fitting accessories and earthing facilities. Packaged in a re-usable carton.  
**Additional information:** The use of Thermal Management Equipment, and venting should be utilised for harsh and outdoor applications Please see our general accessories section and Technical chapter for additional information.



# Wall Mounting Enclosures

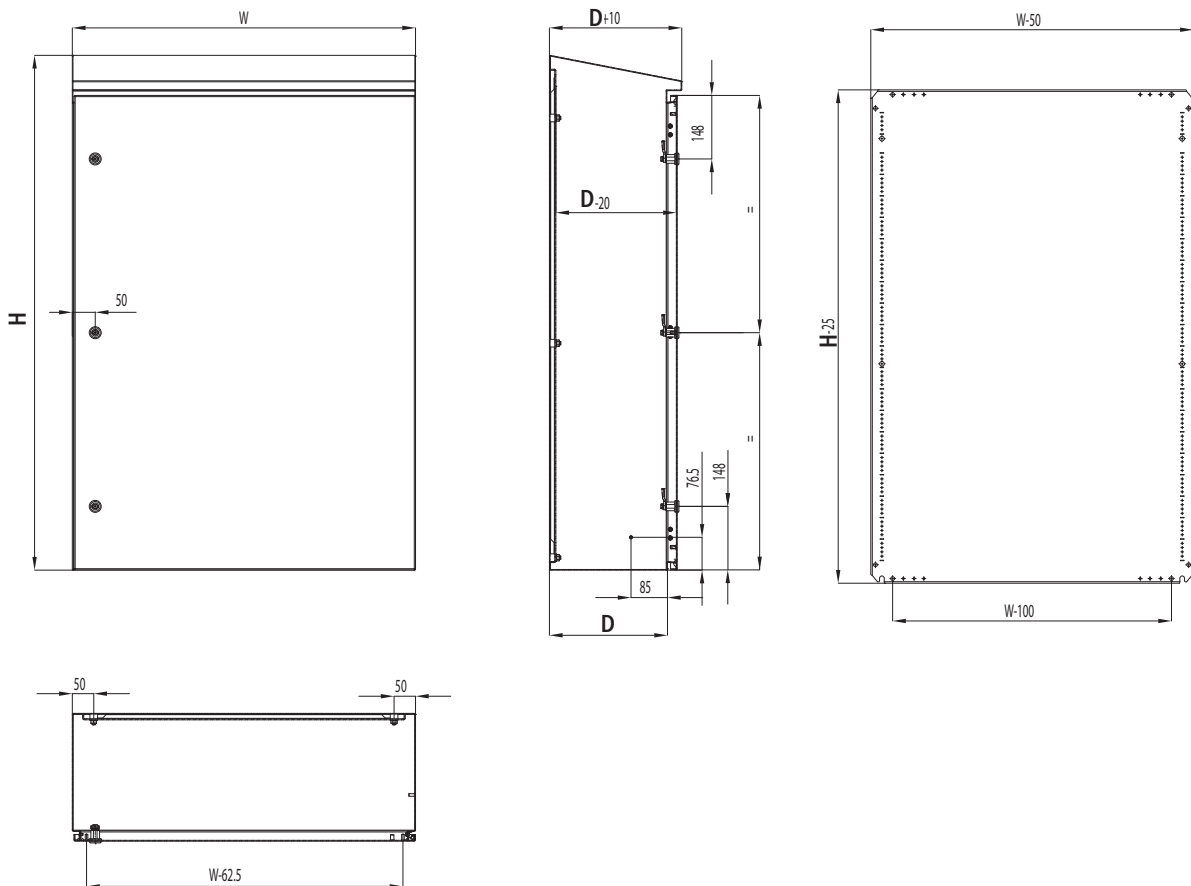
AFS, IP 66/NEMA4x ,12,13, IK 10

With mounting plate

Enclosure dimension			Mounting plate dimension			N° of locks	Usable depth	Weight	Part No. AISI 304	Part No. AISI 316L
H	W	D	h	w						
300	200	155	275	150	1	135	5,6	AFS03021	AFS03021-316*	
400	300	155	375	250	1	135	8,3	AFS04031	AFS04031-316*	
	400	210	375	350	1	190	11,2	AFS04042	AFS04042-316*	
	600	210	375	550	1	190	15,8	AFS04062	AFS04062-316*	
500	500	210	475	450	1	190	17,0	AFS05052	AFS05052-316*	
600	400	210	575	350	2	190	15,8	AFS06042	AFS06042-316*	
	600	210	575	550	2	190	22,2	AFS06062	AFS06062-316*	
		300	575	550	2	280	25,2	AFS06063	AFS06063-316*	
800	800	300	575	750	2	280	32,4	AFS06083	AFS06083-316*	
	600	210	775	550	2	190	28,6	AFS08062	AFS08062-316*	
		300	775	550	2	280	32,3	AFS08063	AFS08063-316*	
800	800	210	775	750	2	190	37,2	AFS08082	AFS08082-316*	
		300	775	750	2	280	42,0	AFS08083	AFS08083-316*	
		300	975	750	3	280	51,5	AFS10083	AFS10083-316*	
1000	800	300	1175	550	3	280	48,5	AFS12063	AFS12063-316*	
	1200	800	300	1175	750	3	280	59,5	AFS12083	AFS12083-316*
			400	1175	750	3	380	62,3	AFS12084	AFS12084-316*
1400	800	400	1375	750	3	380	78,1	AFS14084	AFS14084-316*	

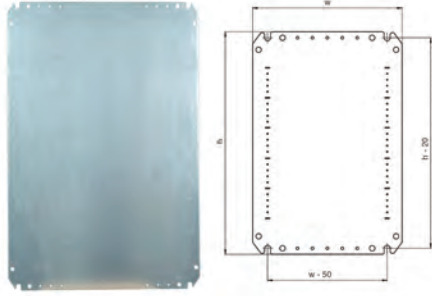
\* Delivery times upon request

## Dimensions



## Wall Mounting Accessories

### AMP, Mounting plate

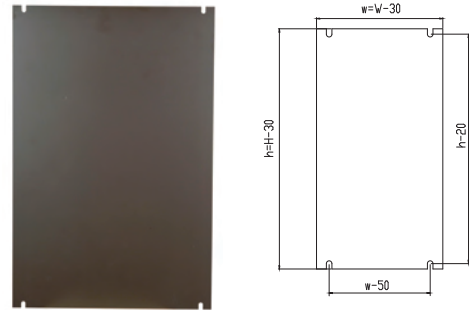


**Description:** Steel mounting plate for MultiMount enclosure. All sides from 800 mm and above are strengthened by folded edges. By using the AMG accessory, the mounting plate position can be adjusted to any depth.

**Material:** Galvanized steel.

**Pack quantity:** 1 piece.

### AMI, Insulated mounting plate



**Description:** Insulated mounting plate for MultiMount enclosures. By using the AMG accessory, the mounting plate position can be adjusted to any depth.

**Material:** Bakelite

**Pack quantity:** 1 piece.

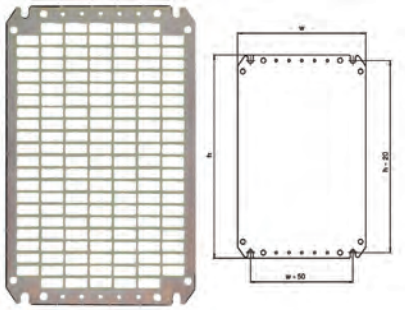
Enclosure dimension		Mounting plate dimension		Part No.
H	W	h	w	
200	200	170	150	AMP02020
250	200	220	150	AMP02520
	250	220	200	AMP02525
300	250	270	200	AMP03025
	300	270	250	AMP03030
	600	270	550	AMP03060
	800	270	750	AMP03080
	1000	270	950	AMP03100
	1200	270	1150	AMP03120
350	250	320	200	AMP03525
400	300	370	250	AMP04030
	400	370	350	AMP04040
	500	370	450	AMP04050
	600	370	550	AMP04060
500	300	470	250	AMP05030
	400	470	350	AMP05040
	500	470	450	AMP05050
600	400	570	350	AMP06040
	500	570	450	AMP06050
	600	570	550	AMP06060
	800	570	750	AMP06080
700	500	670	450	AMP07050
800	400	770	350	AMP08040
	600	770	550	AMP08060
	800	770	750	AMP08080
	1200	770	1150	AMP08120
1000	600	970	550	AMP10060
	800	970	750	AMP10080
	1000	970	950	AMP10100
1200	600	1170	550	AMP12060
	800	1170	750	AMP12080
	1000	1170	950	AMP12100
1400	1000	1370	950	AMP14100

Enclosure dimension		Mounting plate dimension		Part No.
H	W	h	w	
200	200	170	150	AMI02020
250	200	220	150	AMI02520
	250	220	200	AMI02525
300	250	270	200	AMI03025
	300	270	250	AMI03030
	350	250	320	AMI03525
	400	300	370	AMI04030
	400	370	350	AMI04040
	500	370	450	AMI04050
	600	370	550	AMI04060
500	300	470	250	AMI05030
	400	470	350	AMI05040
	500	470	450	AMI05050
600	400	570	350	AMI06040
	500	570	450	AMI06050
	600	570	550	AMI06060
	800	570	750	AMI06080
700	500	670	450	AMI07050
800	400	770	350	AMI08040
	600	770	550	AMI08060
	800	770	750	AMI08080
1000	600	970	550	AMI10060
	800	970	750	AMI10080
1200	600	1170	550	AMI12060
	800	1170	750	AMI12080



## Wall Mounting Accessories

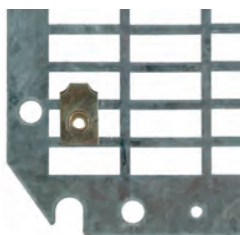
### AMT, Telequick mounting plate



**Description:** It simplifies installation and equipment mounting. Rectangular holes 26 x 11mm to obtain required fixing positions with snap nuts. The nuts can be moved around within the rectangular hole. By using the AMG accessory, the mounting plate position can be adjusted to any depth.  
**Material:** Galvanized steel.  
**Pack quantity:** 1 piece.

Enclosure dimension		Mounting plate dimension		Part No.
H	W	h	w	
400	300	370	250	AMT04030
	400	370	350	AMT04040
	500	370	450	AMT04050
500	600	370	550	AMT04060
	300	470	250	AMT05030
	400	470	350	AMT05040
600	500	470	450	AMT05050
	400	570	350	AMT06040
	500	570	450	AMT06050
700	600	570	550	AMT06060
	800	570	750	AMT06080
	500	670	450	AMT07050
800	400	770	350	AMT08040
	600	770	550	AMT08060
	800	770	750	AMT08080
1000	600	970	550	AMT10060
	800	970	750	AMT10080
1200	600	1170	550	AMT12060
	800	1170	750	AMT12080

### TN, Snap nuts for telequick plates



**Description:** Nuts to be used in the telequick mounting plates.  
**Pack quantity:** 50 pieces.

Thread	Part No.
M 4	TN04
M 5	TN05
M 6	TN06

### AMG, Depth adjust kit



**Description:** To provide depth adjustment for different accessories: mounting plate, 19" profiles and inner door. In stainless steel enclosure machining is required.  
**Material:** 2mm galvanized steel.  
**Depth adjustment:** Distance to the door D-35 to 65mm.  
**Pack quantity:** 2 pairs with mounting accessories.

Enclosure dimension	Part No.
D	
155	AMG155
210	AMG210
260	AMG260
300	AMG300
400	AMG400

### AMTE, Spacer bolts



**Description:** For depth adjustment of the mounting plate.  
 Metric thread M8.  
**Material:** Zinc plated steel.

Length	Pack quantity	Part No.
10	50	AMTE8010
12	50	AMTE8012
14	50	AMTE8014
16	50	AMTE8016
18	50	AMTE8018
20	50	AMTE8020
30	50	AMTE8030
40	20	AMTE8040
50	20	AMTE8050
55	20	AMTE8055
100	20	AMTE8100

## Wall Mounting Accessories

### AW, Wall mounting brackets



**Description:** Mounting brackets for safe wall fixing. It includes the sealing washers to guarantee the IP rating.

**Material:** 3mm zinc plated steel.

**Pack quantity:** 4 brackets with mounting accessories.

**Part No.**

AW41

### AWS, Wall mounting brackets



**Description:** Mounting brackets for safe wall fixing. It includes the sealing washers to guarantee the IP rating. In stainless steel machining is required.

**Pack quantity:** 4 brackets with mounting accessories.

**Material** **Part No.**

4mm chrome plated steel AWS41  
3mm stainless steel 316 AWS41-316

### EPF, Enclosures pole fixation



**Description:** Accessory to fix MultiMount enclosures on poles. Maximum pole diameter of 400mm. Additional machining is not required.

**Material:** Galvanized steel.

**Pack quantity:** 2 profiles and mounting accessories.

**Enclosure dimension**

W	Part No.
300	EPF0300
400	EPF0400
500	EPF0500
600	EPF0600
800	EPF0800

### ADT, Transparent doors



**Description:** To replace the standard door, it provides a clear view of the components installed inside the enclosure. Allows all the options of the locking program.

**Material:** 1.2mm mild steel / 1.4mm ADT06060R5 and above / 1.8mm ADT10060R5 and above, and 3mm transparent acrylic glass.

**Finish:** RAL 7035 structure powder coating.

**Protection:** Complies with IP 55

**Pack quantity:** 1 door.

Enclosure dimension	Viewing area		N° of locks	Part No.	
	H	W			h
300	250	159	93	1	ADT03025R5
	300	159	143	1	ADT03030R5
400	300	259	143	1	ADT04030R5
	400	259	243	1	ADT04040R5
500	300	359	143	1	ADT05030R5
	400	359	243	1	ADT05040R5
600	400	459	243	2	ADT06040R5
	500	459	343	2	ADT06050R5
	600	459	443	2	ADT06060R5
700	500	559	343	2	ADT07050R5
	800	659	443	2	ADT08060R5
1000	600	859	427	1*	ADT10060R5
	800	859	627	1*	ADT10080R5
1200	600	1059	427	1*	ADT12060R5
	800	1059	627	1*	ADT12080R5

\* 3 point espagnolette locking.

### MMH, Hinges



**Description:** Door hinges that allow the door to open 180°. Machining is required.

**Material:** Zinc plated steel.

**Pack quantity:** Hinges with mounting accessories.

**For enclosure**

H	Part No.
≤ 800mm	MMH02
> 800mm	MMH03



## Wall Mounting Accessories

### ADC, Glazed door with clear glass



**Description:** To replace the standard door, it provides a clear view of the components installed inside the enclosure. Allows all the options of the locking program.

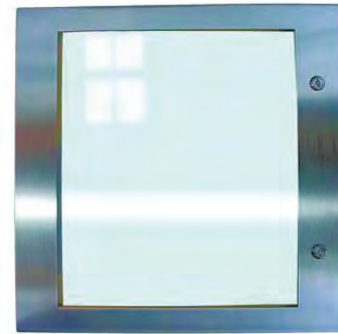
**Material:** 1.2mm mild steel / 1.4mm ADC06060R5 and above / 1.8mm ADC10060R5 and above, and 4mm clear safety glass.

**Finish:** RAL 7035 structure powder coating.

**Protection:** Complies with IP 55 and NEMA 12,13

**Pack quantity:** 1 door.

### ADCS, Glazed door with clear glass



**Description:** To replace the standard door, provides a clear view of the components installed inside the enclosure. Allows all the options of the locking program.

**Material:** 1.5mm AISI 304 stainless steel, 2mm ASR 1008030 and above, and 4mm clear safety glass.

**Finish:** 240s pre-grained stainless steel (average 0.5 micron)

**Protection:** Complies with IP 55 and NEMA 12, 13.

**Pack quantity:** 1 door

Enclosure dimension		Viewing area		N° of locks		Part No.
H	W	h	w			
300	250	159	93	1		ADC03025R5
	300	159	143	1		ADC03030R5
400	300	259	143	1		ADC04030R5
	400	259	243	1		ADC04040R5
500	300	359	143	1		ADC05030R5
	400	359	243	1		ADC05040R5
600	400	459	243	2		ADC06040R5
	500	459	343	2		ADC06050R5
	600	459	443	2		ADC06060R5
700	500	559	343	2		ADC07050R5
800	600	659	443	2		ADC08060R5
1000	600	859	427	1*		ADC10060R5
	800	859	627	1*		ADC10080R5
1200	600	1059	427	1*		ADC12060R5
	800	1059	627	1*		ADC12080R5

\* 3 point espagnolette locking.

Enclosure dimension		Viewing area		N° of locks		Part No.
H	W	h	w			
360	240	219	83	1		ADCS03624
400	300	259	143	1		ADCS04030
	400	259	243	1		ADCS04040
	600	259	443	1		ADCS04060
500	500	359	343	2		ADCS05050
	600	400	459	243	2	ADCS06040
	600	459	443	2		ADCS06060
	800	459	643	2		ADCS06080
800	600	659	443	2		ADCS08060
	800	659	643	2		ADCS08080
1000	800	859	643	1*		ADCS10080
1200	800	1059	643	1*		ADCS12080
1400	800	1259	643	1*		ADCS14080

\* 3 point espagnolette locking.



## Wall Mounting Accessories

### ADA/ADAB, Glazed aluminium door



**Description:** To replace the steel door. Can be used in combination with swing frame, modular chassis or inner door. The double-bit 3mm lock can be replaced by any optional insert or handle. It increases the enclosure depth in 10mm (ADA) or 35mm (ADAB). Can also be used as a viewing window when used in combination with mounting kit ADAMK/ADABMK.

**Material:** Aluminium and 3mm acrylic glass.

**Finish:** Anodised aluminium.

**Protection:** Complies with IP 54.

**Pack quantity:** 1 door with mounting accessories.

Enclosure dimension		Viewing area		N° of locks	Part No.
H	W	h	w		
300	300	226	226	1	ADA03030
400	300	326	226	1	ADA04030
	400	326	326	1	ADA04040
600	300	326	526	1	ADA04060
	400	426	226	1	ADA05030
500	400	426	326	1	ADA05040
	600	400	522	322	2
600	600	522	522	2	ADAB06060
	800	522	722	2	ADAB06080
700	500	622	422	2	ADAB07050
	800	600	722	2	ADAB08060
1000	800	922	722	2	ADAB10080
1200	600	1122	522	2	ADAB12060
	800	1122	722	2	ADAB12080

### AVB, Vertical mounting profiles



**Description:** For the mounting of swing frames in full and partial height. The SFBP is mounted directly to the AVB. Equipped with 25 mm hole pattern. For other mounting purposes CNM cage nuts can be used. Fitted onto hinge holes in the front frame of the enclosure. In stainless steel enclosure machining is required.

**Material:** 2mm galvanized steel.

**Pack quantity:** 1 pair with mounting accessories.

For enclosure		Part No.
H		
600		AVB0600
800		AVB0800
1000		AVB1000
1200		AVB1200
1400		AVB1400

### ACA/ACB, Display aluminium panel



**Description:** For controls, meters, indication lamps etc. The mounted components are protected by a 23.5mm high frame. The aluminium panel is 3mm thick and can be removed for drilling or screen printing. The double-bit 3mm lock can be replaced by any optional insert or handle.

**Material:** Aluminium.

**Finish:** Anodised aluminium.

**Protection:** Complies with IP 54.

**Pack quantity:** 1 door with mounting accessories.

Enclosure dimension		Viewing area		N° of locks	Part No.
H	W	h	w		
300	300	226	226	1	ACA03030
400	300	326	226	1	ACA04030
	400	326	326	1	ACA04040
600	300	326	526	1	ACA04060
	400	426	226	1	ACA05030
500	400	426	326	1	ACA05040
	600	400	522	322	2
600	500	426	426	1	ACA05060
	800	522	522	2	ACA06060
700	500	622	422	2	ACA06080
	800	600	722	2	ACA07050
800	600	722	522	2	ACA08060
	800	722	722	2	ACA08080
1000	600	922	522	2	ACA10060
	800	922	722	2	ACA10080
1200	600	1122	522	2	ACA12060
	800	1122	722	2	ACA12080

### AVP, 19" profiles



**Description:** For 600mm width enclosures. Adjustable depth position with AMG accessory. Usable depth between 19" profiles and external door: 56mm. Fitted onto hinge holes in the front of the enclosure. In stainless steel enclosure machining is required.

**Material:** 2mm galvanized steel.

**Pack quantity:** 1 pair with mounting accessories.

For enclosure		
H	Height U	Part No.
600	12	AVP0600
800	17	AVP0800
1000	20	AVP1000
1200	26	AVP1200



## Wall Mounting Accessories

### AC, Modular chassis



**Description:** Used for easy mounting of DIN-rail components with a maximum height of 68mm. Distance between rows 125mm. If required, the standard enclosure door can be replaced with a glazed door. Usable depth between front cover and external door: 35mm. Adjustable depth position with AMG accessory. In stainless steel enclosure machining is required.  
**Material:** DIN-rails PP0735 made of 1.20mm galvanized steel, vertical profiles 1.5mm mild steel, and front cover 1.5mm mild steel.

**Finish:** RAL 7035 structure powder coating.

**Pack quantity:** Slotted front panel, two vertical profiles, top and bottom blank panels, one DIN-rail per row, and mounting accessories.

For enclosure		N° of modules	N° of rows	Part No.
H	W			
300	250	16	2	AC03025R5
400	300	33	3	AC04030R5
500	400	48	3	AC05040R5
600	400	64	4	AC06040R5
	600	108	4	AC06060R5
700	500	110	5	AC07050R5
800	600	162	6	AC08060R5
1000	600	216	8	AC10060R5
	800	304	8	AC10080R5

### ADSW, MultiMount door switch



**Description:** To activate any electrical device (Lighting, signalling, alarm, etc.). Cable entry M20. In stainless steel enclosure, machining is required.

**Switch capacity:** 6A / 230V.

**Approvals:** UL and CSA approved.

**Pack quantity:** 1 piece with mounting accessories.

Part No.
ADSW01

### ADI, Inner doors



**Description:** For controls, meters, lamps, etc. Hinges can be mounted to allow left or right hand opening. Lock double-bit 3mm insert; 700mm high doors and above have 2 locks. Usable depth between inner and external door: 35mm. Adjustable depth position with AMG accessory. Workable area: H-55, W- 108. In stainless steel enclosure machining is required.

**Material:** Door 1.5mm mild steel, and vertical profiles 2mm mild steel.

**Finish:** RAL 7035 structure powder coating.

**Pack quantity:** Inner door, two vertical profiles and mounting accessories.

Enclosure dimension				N° of		Part No.
H	W	h	w	locks		
400	300	345	192	1	ADI04030R5	
	400	345	292	1	ADI04040R5	
	500	345	392	1	ADI04050R5	
500	600	345	492	1	ADI04060R5	
	300	445	192	1	ADI05030R5	
	400	445	292	1	ADI05040R5	
600	500	445	392	1	ADI05050R5	
	400	545	292	1	ADI06040R5	
	500	545	392	1	ADI06050R5	
600	600	545	492	1	ADI06060R5	
	800	545	692	1	ADI06080R5	
700	500	645	392	2	ADI07050R5	
800	400	745	292	2	ADI08040R5	
	600	745	492	2	ADI08060R5	
	800	745	692	2	ADI08080R5	
1000	600	945	492	2	ADI10060R5	
	800	945	692	2	ADI10080R5	
1200	600	1145	492	2	ADI12060R5	
	800	1145	692	2	ADI12080R5	

### ADIS, Inner doors



**Description:** For controls, meters, lamps, etc. Hinges can be mounted to allow left or right hand opening (Machining is required). Double-bit 3mm lock, 500mm high doors and above have 2 locks. Usable depth between inner and external door: 35mm, adjustable depth position with AMG accessory. Workable area: H-55, W-108.19" version also available.

**Material:** Door 1.5mm AISI 304 stainless steel.

**Finish:** 240s pre-grained stainless steel (average 0.5 micron)  
**Pack quantity:** 1 piece with mounting accessories.

Enclosure dimension			Part No.
H	W		
400	300		ADIS04030
500	500		ADIS05050
600	400		ADIS06040
	600		ADIS06060
800	600		ADIS08060
1000	800		ADIS10080
1200	800		ADIS12080

To order 19" version, please add I19 to the catalogue no, e.g. ADIS04030I19

## Wall Mounting Accessories

### ADO, Door stop



**Description:** Door stop for height 300mm enclosures and above. To secure the door in an open position allowing a 90° or 110° opening. Mounted directly to the door profile studs. Machining is required.

**Pack quantity:** 1 piece with mounting accessories.

Material	Part No.
Zinc plated steel	ADO201
Stainless steel	ADO200S

### MMDP, Door mounting profiles



**Description:** To strengthen the door, mounted on the inside of the door on the M6 welded studs. equipped with 10mm hole pattern.

**Material:** 1.4mm galvanized steel.

**Dimension:** 15 x 14mm.

**Pack quantity:** 1 pair with mounting accessories.

For enclosure	Part No.
H	
500	MMDP050
600	MMDP060
700	MMDP070
800	MMDP080
1000	MMDP100
1200	MMDP120
1400	MMDP140

### ALL, Locks



**Description:** Alternative locks to replace the standard one.

**Pack quantity:** 1 piece.

Description	Type	Part No.
Polyamide lock with cylinder	Key 333	ALL509
Eldon lock with cylinder	Ronis key n° C21323	ALL510
Chrome plated lock with cylinder	Ronis key n° C21323	ALL508
ADA/ACA lock with cylinder	Ronis key n° C21323	ALL506
ADAB/ACB lock with cylinder	Ronis key n° C21323	ALL507

### ALLS, Double-bit 3mm stainless steel lock



**Description:** Stainless steel double-bit 3mm lock

Description	Part No.
AISI 304 stainless steel	ALLS304
AISI 316L stainless steel	ALLS316

### ALT, Handles



**Description:** Alternative handles to replace the standard lock.

**Pack quantity:** 1 piece.

Description	Part No.
Plastic handle	ALT560
Plastic handle with cylinder lock, Key 5333	ALT563
Chrome plated T-handle with cylinder lock, key C21323	ALT561
Chrome plated handle with cylinder lock, key C21323	ALT562



## Wall Mounting Accessories

### LSK, Keys



**Description:** Key with Eldon logo. Easy to use design and provides a good grip.

**Material:** Die cast alloy

**Pack quantity:** 1 piece

Description	Part No.
Plastic double-bit 3mm	LSK502
Metallic double-bit 3mm	LSK503
Metallic double-bit 5mm	LSK505
Metallic Square 7mm	LSK523
Metallic Square 8mm	LSK524
Metallic Triangle 7mm	LSK526
Metallic Triangle 8mm	LSK527

### ALI, Inserts



**Description:** Inserts to replace the standard double-bit 3mm insert in the standard polyamide lock.

**Material:** Polyamide.

**Pack quantity:** 1 piece.

Description	Part No.
Double-bit 3mm	ALI503
Double-bit 5mm	ALI505
Square 7mm	ALI523
Square 8mm	ALI525
Triangular 8mm	ALI524
Slotted 2x4mm	ALI528

### LSMK, Lock system multi key



**Description:** Multi-Key function with Eldon logo and a different key in every end: double-bit 5mm, square 8mm, triangle 8mm and a standard hexagonal adaptor to use with the screw ends.

**Material:** Steel.

**Pack quantity:** 1 piece.

Part No.
LSMK01

### PLC, Padlocking



**Description:** The padlocking cover is mounted over the existing standard lock. The standard lock is totally covered and not accessible when padlock is fitted. Maximum padlock bow diameter of 10mm.

**Material:** Stainless steel

**Pack quantity:** 1 piece

Description	Part No.
Padlocking cover	PLC01

## Wall Mounting Accessories

### ARF, Rain hood



**Description:** To be fitted as an outdoor shelter on single mounted enclosures. The roof is slightly sloped and has a dripstrip. Machining is required. It increases the enclosure dimension in H:60mm, D:20mm and W:20mm

**Material:** 1.5mm mild steel.

**Finish:** RAL 7035 structure powder coating.

**Pack quantity:** 1 rainhood with mounting accessories.

Enclosure dimension		
W	D	Part No.
250	155	ARF02515R5
	210	ARF02521R5
300	155	ARF03015R5
	210	ARF03021R5
400	155	ARF04015R5
	210	ARF04021R5
	260	ARF04026R5
	300	ARF04030R5
500	155	ARF05015R5
	210	ARF05021R5
	260	ARF05026R5
	300	ARF05030R5
600	210	ARF06021R5
	260	ARF06026R5
	300	ARF06030R5
	400	ARF06040R5
800	210	ARF08021R5
	260	ARF08026R5
	300	ARF08030R5
	400	ARF08040R5
1000	300	ARF10030R5
1200	300	ARF12030R5

### AL, Lifting eyes



**Description:** M12 thread. Complies with DIN580 lifting requirements. Machining is required.

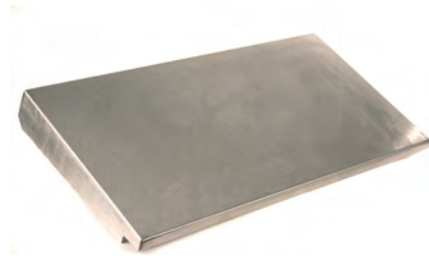
**Material:** Steel.

**Pack quantity:** 2 eye-bolts, 2 reinforcements and mounting accessories.

**Part No.**

AL9301

### ASST, Rain hood



**Description:** To be fitted as extra protection on single mounted enclosures. The roof is slightly sloped and has a dripstrip. Machining is required.

**Material:** AISI 304 / AISI 316L pre-grained stainless steel

**Finish:** 240s pre-grained stainless steel (average 0.5 micron)

**Pack quantity:** 1 rain hood with mounting material.

W	D	Part No. AISI 304	Part No. AISI 316L
400	210	ASST042	ASST042-316*
600	210	ASST062	ASST062-316*
	300	ASST063	ASST063-316*
800	210	ASST082	ASST082-316*
	300	ASST083	ASST083-316*
	400	ASST084	ASST084-316*
1000	300	ASST103	ASST103-316*
1200	300	ASST123	ASST123-316*

\*Delivery times upon request

### EFCS, Protective fan cover



**Description:** Provides additional protection to the filter fans against the ingress of water in outdoor or wash down environments. Folded and seam welded. (Machining is required)

**Material:** AISI 304 / AISI 316L stainless steel

**Finish:** 240s pre-grained stainless steel

**Pack quantity:** 1 piece

**Delivery:** Fixing studs, nuts

#### Fan Cover

H	W	D	Suitable for fans	Part No. AISI 304	Part No. AISI 316L
144	134	100	EF100 / EF200	EFCS20	EFCS20-316*
275	265	100	EF250 / EF300	EFCS25-30	EFCS25-30-316*
353	343	100	EF500 / EF700	EFCS50-60	EFCS50-60-316*

\*Delivery times upon request



## Wall Mounting Accessories

### P, Plinth front and rear



**Description:** Four corner pieces with removable front covers. The side panels PA must be ordered separately. Available heights: 100 and 200mm. Machining is required.

**Material:** 2.5mm mild steel for corner pieces, and 1.5mm mild steel for covers.

**Finish:** RAL 7022 structure powder coating.

**Pack quantity:** 4 corner pieces and 2 front covers, with mounting accessories.

H	W	Part No.
100	400	P1040
	500	P1050
	600	P1060
	800	P1080
	1000	P1100
	1200	P1120
200	400	P2040
	500	P2050
	600	P2060
	800	P2080
	1000	P2100
	1200	P2120

### PA, Plinth side panels



**Description:** Side covers for plinth P, strengthened by folded edges.

**Material:** 1.5mm mild steel.

**Finish:** RAL 7022 structure powder coating.

**Pack quantity:** 2 pieces for height 100 mm, and 4 pieces for height 200 mm.

H	D	Part No.
100	260	PA1026
	300	PA1030
	400	PA1040
200	260	PA2026
	300	PA2030
	400	PA2040

### MSVS, Plinths



**Description:** Four U-section side pieces fixed by screws to the corner sections. (Machining is required)

**Material:** 2 mm AISI 304/AISI 316L pre-grained stainless steel

**Finish:** 240s pre-grained (0,5 microns average).

**Pack quantity:** 1 plinth with mounting material

H	W	D	Part No. AISI 304	Part No. AISI 316L
100	600	300	MSVS1063	MSVS1063-316*
	800	300	MSVS1083	MSVS1083-316*
	400	300	MSVS1084	MSVS1084-316*
1000	1000	300	MSVS1103	MSVS1103-316*
	1200	300	MSVS1123	MSVS1123-316*

\*Delivery times upon request

### PFF, Floor stands



**Description:** Floor stands for floor mounting to give a suitable operation height. Available for 300 and 400mm depth enclosures with  $W \geq 400$ mm. 300 or 450 mm high are available. Machining is required

**Material:** 2.0 mm mild steel.

**Finish:** RAL 7035 structure powder coating.

**Pack quantity:** 2 pieces with mounting accessories.

H	D	Part No.
300	300	PFF330R5
450	300	PFF345R5
300	400	PFF430R5
450	400	PFF445R5

## Wall Mounting Accessories

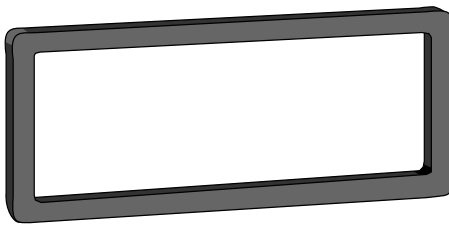
### AF, Standard gland plate



**Description:** Gland plate for the standard gland opening.  
**Material:** 1.4mm mild steel.  
**Finish:** RAL 7035 structure powder coating.  
**Pack quantity:** 1 piece.

Size	For opening	Part No.
0S	110 x 56	AF00SR5
1S	210 x 56	AF01SR5
2S	310 x 56	AF02SR5
3S	410 x 56	AF03SR5
1	210 x 96	AF01R5
2	310 x 96	AF02R5
3	410 x 96	AF03R5
4	510 x 96	AF04R5

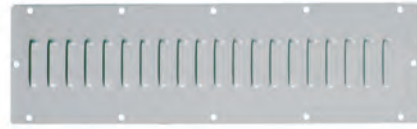
### AG, Gland plate gasket



**Description:** For standard gland plate opening.  
**Material:** 5mm polyethylene foam.  
**Pack quantity:** 1 piece.

Size	For opening	Part No.
0 S	110 x 56	AG00S
1 S	210 x 56	AG01S
2 S	310 x 56	AG02S
3 S	410 x 56	AG03S
1	210 x 96	AG01
2	310 x 96	AG02
3	410 x 96	AG03
4	510 x 96	AG04

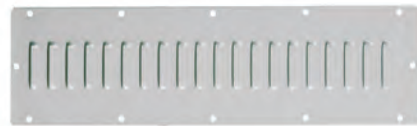
### AFR, Ventilated gland plate



**Description:** Louvered plate, pressed out 5 mm.  
**Material:** 1.4mm mild steel.  
**Finish:** RAL 7035 structure powder coating.  
**Protection:** Complies with IP 23, in bottom or vertical position.  
**Pack quantity:** 1 piece.

Size	For opening	Part No.
1	210 x 96	AFR01R5
2	310 x 96	AFR02R5
3	410 x 96	AFR03R5
4	510 x 96	AFR04R5

### AFG, Ventilated gland plate with fly-net



**Description:** Louvered plate, pressed out 5 mm with fly-net.  
**Material:** 1.4mm mild steel.  
**Finish:** RAL 7035 structure powder coating.  
**Protection:** Complies with IP 43, in bottom or vertical position.  
**Pack quantity:** 1 piece.

Size	For opening	Part No.
1	210 x 96	AFG01R5
2	310 x 96	AFG02R5
3	410 x 96	AFG03R5
4	510 x 96	AFG04R5

### AGC, Combining gaskets



**Description:** To be used when a MultiMount enclosures (MAS/MAD/MAP) combination is needed.  
**Material:** 10mm polyethylene foam.  
**Pack quantity:** 2 pieces, and combination mounting accessories.

Size	For opening	Part No.
2	310 x 96	AGC02
3	410 x 96	AGC03
4	510 x 96	AGC04



## Wall Mounting Accessories

### AFA, Adapter gland plate



**Description:** Adapts FL gland plates to the Multimount gland opening.

**Material:** 1.4mm mild steel.

**Finish:** RAL 7035 structure powder coating.

**Pack quantity:** 1 piece.

Size	N° of FL openings	For opening	Part No.
1	1xFL13	210 x 96	AFA01R5
2	1xFL21	310 x 96	AFA02R5
3	1xFL21	410 x 96	AFA03R5
4	2xFL21	510 x 96	AFA04R5

### AFV, Ventilated gland plate with filter



**Description:** Louvered plate, pressed out 5 mm with filter.

**Material:** 1.4mm mild steel.

**Finish:** RAL 7035 structure powder coating.

**Protection:** Complies with IP 53, in bottom or vertical position

**Pack quantity:** 1 piece.

Size	For opening	Part No.
1	210 x 96	AFV01R5
2	310 x 96	AFV02R5
3	410 x 96	AFV03R5
4	510 x 96	AFV04R5

### EHTC, Plastic gland plate



**Description:** Gland plate suitable for leading through cables as well as different types of tubing. To be installed directly to the adapter gland plate AFA02/AFA03/AFA04.

**Material:** Different types of polymers reinforced with a steel plate. Halogen free, and UV resistant.

**Protection:** Complies with IP65

**Finish:** RAL 7035

**Pack quantity:** 1 piece with mounting accessories

Part No.
EHTC2125G
EHTC213G
EHTC2135G
EHTC2150G

Cable/Tube diameter (mm)	EHTC2125G	EHTC213G	EHTC2135G	EHTC2150G
5-7	4			
6-10			4	
6-14		3		
7-12			12	
7-13				49
8-14 / 7-10	16			
10-14			16	
12-18			2	
14-20 / 5-10	4			
15-25				1
17-32			1	
20-26 / 12-15	1			
24-54		2		
30-59		1		



## Wall Mounting Accessories

### AFK, Gland plate with knock-outs



**Description:** Gland plate with knock-outs according to table.  
**Material:** 1.4mm mild steel.  
**Finish:** RAL 7035 structure powder coating.  
**Pack quantity:** 1 piece.

Size	For opening	M16	M20	M25	M32	Part No.
1S	210 x 56	4	3	—	—	AFK11SR5
2S	310 x 56	6	3	1	—	AFK21SR5
3S	410 x 56	9	4	1	—	AFK31SR5
1	210 x 96	4	5	2	2	AFK11R5
		12	—	1	1	AFK12R5
2	310 x 96	9	5	4	2	AFK21R5
		21	—	1	1	AFK22R5
3	410 x 96	18	5	4	2	AFK31R5
		21	10	—	—	AFK32R5
4	510 x 96	27	5	4	2	AFK41R5
		18	14	3	1	AFK42R5

### CPG, Cable plastic gland



**Description:** Traditional cable fittings. Known for excellent strain relief even while providing higher protection class.  
**Material:** Fitting body in polyamide PA6, and sealing in neoprene  
**Temperature resistance:** -25°C to +100°C  
**Flammability:** VO according to UL94  
**Finish:** RAL 7035  
**Protection:** IP 68 at 5 bar  
**Pack quantity:** Depending on the size, see table below

Thread	Cable Size	Pack quantity	Part No.
M12x1,5	2,5 - 6,5	100	CPG12
M16x1,5	5,5 - 10	50	CPG16
M20x1,5	5 - 12	50	CPG20
M25x1,5	9 - 18	50	CPG25
M32x1,5	14 - 25	20	CPG32
M40x1,5	18 - 32	10	CPG40
M50x1,5	24 - 38,5	5	CPG50
M63x1,5	35 - 48	5	CPG63

### CPGN, Plastic gland nut



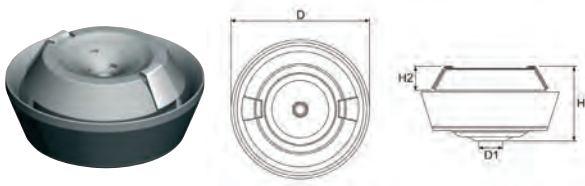
**Description:** Plastic lock nut to make a safe CPG fixation.  
**Material:** Polyamide  
**Temperature resistance:** -25°C to +100°C  
**Flammability:** VO according to UL94  
**Finish:** RAL 7035  
**Pack quantity:** Depending on the size, see table below

Thread	Pack quantity	Part No.
M12x1,5	100	CPGN12
M16x1,5	100	CPGN16
M20x1,5	100	CPGN20
M25x1,5	100	CPGN25
M32x1,5	100	CPGN32
M40x1,5	50	CPGN40
M50x1,5	50	CPGN50
M63x1,5	50	CPGN63



## Wall Mounting Accessories

### CAG, Cable anchorage gland



**Description:** Two-component grommet with membrane seal and cable anchorage. The installation does not require tools, it is self-adjusting to its surrounding wall thickness and click-fixed in place. Because of its compact design it only extends 5,7mm outside the enclosure on which it is mounted. The “pushout” membrane is a permanent seal until it is penetrated by a cable or pipe. Suitable for holes in materials of 0,7 to 3mm thickness.

**Material:** TPE and polyamide 66, halogen free

**Temperature resistance:** -20°C to +125°C

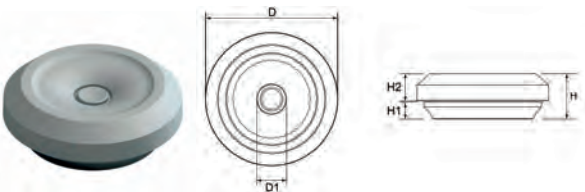
**Finish:** RAL 7035

**Protection:** IP 67 / IP 65, Waterproof

**Pack quantity:** 50 pieces

Metric	Cable Diameter	Hole diameter	H	H2	D	Part No.
M20	7-11	20,5	17-20	5,5	34-37	CAG20
M25	7-13	25,5	17-20	5,7	39-42	CAG25

### CES, Simple protection cable entry



**Description:** Simple grommet manufactured in a rubber-like material. The installation does not require tools. The “pushout” membrane is a permanent seal until it is penetrated by a cable or pipe, and you always have a round opening and the IP guaranteed. It is equipped with a sock that closes tight around the cable and allows for it to be moved around like a “joy-stick” in the opening without endangering the IP, so it works extremely well with cables passing through at an angle. Suitable for holes in materials of 0,5 to 4,5mm thickness.

**Material:** TPE (thermoplastic elastomer), halogen free.

**Temperature resistance:** -50°C to +125°C

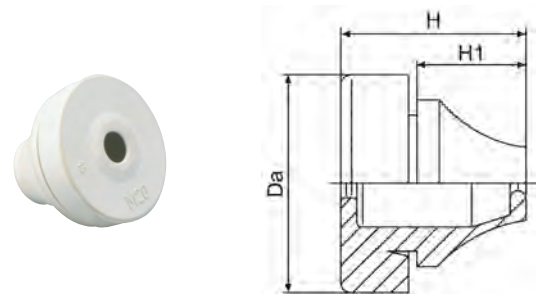
**Finish:** RAL 7035

**Protection:** IP 67

**Pack quantity:** Depending on the size, see table below

Metric	Cable Diameter	Hole diameter	H	H1	D	Pack qty	Part No.
M16	5-10	16,5	11,0	4,0	23,5	50	CES16
M20	6-13	20,5	11,0	4,0	27,5	50	CES20
M25	8-17	25,5	11,0	4,0	32,5	50	CES25
M32	12-24	32,5	11,0	4,0	39,5	25	CES32

### CED, Double protection cable entry



**Description:** The rubber grommet is very simple to use. The installation does not require tools, which in turn means lower work cost. The “pushout” membrane is a permanent seal until it is penetrated by a cable or pipe. Suitable for holes in materials of 0,5 to 4mm thickness.

**Material:** EPDM, halogen free.

**Temperature resistance:** -40°C to +110°C

**Finish:** RAL 7035

**Protection:** IP 67

**Pack quantity:** Depending on the size, see table below

Metric	Cable Diameter	Hole diameter	H	H1	Da (mm)	Pack qty	Part No.
M12	4-7	12,5	12,8	5,6	20,0	50	CED12
M16	5-9	16,5	17,7	11,0	21,0	50	CED16
M20	8-13	20,5	20,0	13,4	25,5	50	CED20
M25	11-17	25,5	21,3	15,3	30,5	50	CED25
M32	15-20	32,5	24,6	18,6	38,5	25	CED32
M40	19-28	40,5	29,5	21,7	48,5	25	CED40
M50	27-35	50,5	34,8	25,0	60,5	10	CED50

## Wall Mounting Accessories

### CEP, Cable entry gland plate



**Description:** Plastic cable entry for a fast, economical and tool-free incoming of cables and/or pneumatic conduits inside the enclosure. Integrated seal. Suitable for standard cut-outs for 24-pin Harting and Wieland connectors. For snap-in fastening and/or screwing. Snap-in system works at wall thicknesses of 1.5 to 2.0mm. Installation height: 15.5mm.

**Material:** Polyamide, and the seal is made of TPU/NBR/EPDM, halogen free.

**Temperature resistance:** -30°C to +70°C

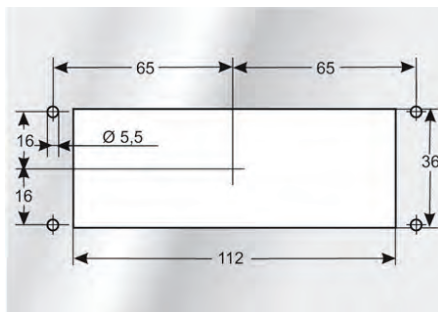
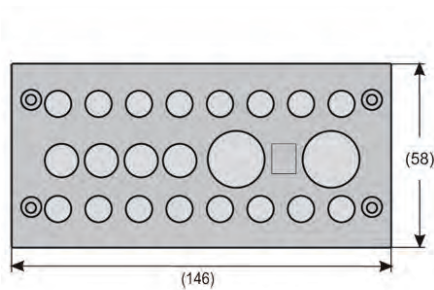
**Flammability:** VO according to UL94

**Finish:** Black

**Protection:** IP 65

**Pack quantity:** 1 piece

Openings (mm)						Part No.
3 - 6	4 - 8	5 - 9	8 - 12	9,5 - 16	14 - 20	
4	-	4	-	-	3	CEP2411
-	-	-	12	-	-	CEP2412
6	-	4	-	4	-	CEP2414
-	-	17	-	-	-	CEP2417
16	-	4	2	-	-	CEP2422
-	23	-	-	-	-	CEP2423
29	-	-	-	-	-	CEP2429



### CEPR, Round cable entry gland plate



**Description:** Round plastic cable entry for a fast, economical and tool-free incoming of cables and/or pneumatic conduits inside the enclosure. Integrated seal. For snap-in mounting. Snap-in system works at wall thicknesses of 1.5 to 2.0mm. Installation height: 9mm outside, and 24-25 inside.

**Material:** Polyamide, and the seal is made of NBR/EPDM, halogen free.

**Temperature resistance:** -30°C to +90°C

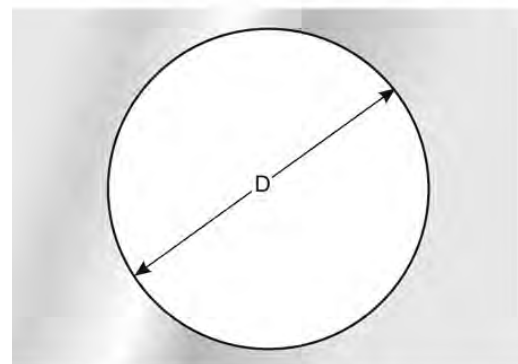
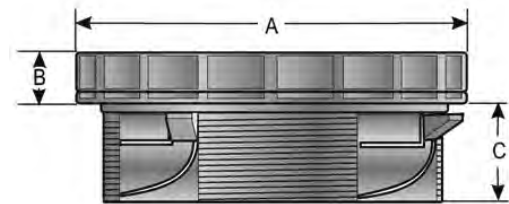
**Flammability:** VO according to UL94

**Finish:** Black

**Protection:** IP 65

**Pack quantity:** 1 piece

Openings (mm)				Part No.
3 - 5	3 - 6,5	6 - 10		
-	7	1		CEPR5008
19	-	-		CEPR6319

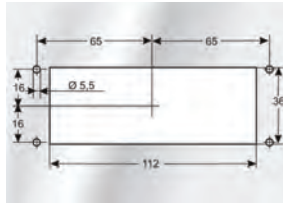


Item N°	A (mm)	B (mm)	C (mm)	D (mm)
CEPR5008	58	9	24	50,5
CEPR6319	71	9	25	63,5



## Wall Mounting Accessories

### CCF, Connected cable entry gland plate



**Description:** Plastic cable entry for a fast, economical and tool-free incoming of cables fitted with connectors inside the enclosure. Integrated seal. Suitable for standard cut-outs for 24-pin Harting and Wieland connectors. For snap-in mounting. Snap-in system works at wall thicknesses of 1.5 to 2.0mm. Installation height: 14mm.

**Material:** Polyamide, halogen free.

**Temperature resistance:** -40°C to +140°C

**Flammability:** VO according to UL94

**Finish:** Black

**Protection:** IP 54 with suitable inserts and cables

**Pack quantity:** 1 piece

Openings	Part No.
10	CCF2410

### CCG, Cable entry grommet



**Description:** Mounted with the CCF cable entry can be used to easily route cables fitted with connectors. The insert is positioned around the cable. It is equipped with catch hooks that anchor themselves in the CCF cable entry. Strain relief is achieved using a simple cable tie.

**Material:** Thermoplastic rubber, halogen free.

**Temperature resistance:** -40°C to +80°C

**Flammability:** HB according to UL94

**Finish:** Black

**Protection:** IP 54 with suitable gland plate and cable

**Pack quantity:** 10 pieces

Cable Diameter (mm)	Part No.
0	CCG00
3-4	CCG03
4-5	CCG04
5-6	CCG05
6-7	CCG06
7-8	CCG07
8-9	CCG08
9-10	CCG09
10-11	CCG10
11-12	CCG11
12-13	CCG12
13-14	CCG13
14-15	CCG14
15-16	CCG15

### Wall Mounting Accessories

When we need to install an already connected cable we can not use the traditional glands, and to cover this requirement Eldon offers you a standard and tested solution.



Our Connected cable entry gland plate solution lets us define the grommet's diameter, and their position according to our installation. The frame CCF has 10 openings which must be covered with the 10 grommets which we need, and if we do not need to use all the grommets with cable hole we will use a dummy grommet to maintain the IP.



These type of cables are usually connected to mobile equipment ( printers, hand control panels, keyboards... ) and it is usual that sometimes there are strains. To avoid that these strains can interrupt the inside connection the grommets CCG provide strain relief only using a simple cable tie



## Wall Mounting Accessories

### ACM, Modular vertical support



**Description:** Support kit for the mounting of the modular panels and components by steps of 150mm. A space for equipment of 46mm high is provided. Independent of the depth of the enclosure, the system can be used in combination with glazed door and a mounting plate is still usable. 50mm of space is provided for the equipment between the door and the panels. In order to allow easy installation of the equipment and the wiring, the system can be assembled, fully equipped and pre-wired outside the enclosure, and then fitted into the enclosure. Cut-outs are provided on the sides of the vertical profiles for cable routing. The kit contains two vertical profiles, top and bottom blanking plates and fixing material.

**Material:** 1.35mm steel plate. Structure powder paint, RAL 7035.

**Pack quantity:** 1 kit with fitting material.

H	W	Steps of 50mm	N° of modules	Part No.
600	600	9	24	ACM06060R5
	800	9	35	ACM06080R5
800	600	15	24	ACM08060R5
	800	15	35	ACM08080R5
1000	600	18	24	ACM10060R5
	800	18	35	ACM10080R5
1200	600	21	24	ACM12060R5
	800	21	35	ACM12080R5

### MCP, Modular slotted panel



**Description:** Front panel for modules. Provided with one DIN rail (PP 1535) per row for MCB (Mini Circuit Bracker).

**Material:** 1.2mm steel plate.

**Finish:** Structure powder paint, RAL 7035.

**Pack quantity:** 1 piece with mounting material.

H	W	N° of module	N° of rows	Part No.
150	600	24/1	1	MCP1506R5
	800	35/1	1	MCP1508R5
200	600	24/1	1	MCP2006R5
	800	35/1	1	MCP2008R5
300	600	48/2	2	MCP3006R5
	800	70/2	2	MCP3008R5
450	600	72/3	3	MCP4506R5
	800	105/3	3	MCP4508R5
600	600	96/4	4	MCP6006R5
	800	140/4	4	MCP6008R5

### MIP, Modular instrumentation panel



**Description:** Front panel with cut outs for control meters and network analyser. To be mounted in a CMV profile for MultiFlex or in an ACM for a MultiMount enclosure.

**Material:** 1.2mm steel plate.

**Finish:** Structure powder paint, RAL 7035.

**Pack quantity:** 1 piece with mounting material.

H	W	N° of cut outs	Dim	Part No.
150	600	1	72 x 72	MIP1506-1PR5
		2	72 x 72	MIP1506-2PR5
		4	72 x 72	MIP1506-4PR5
		2	92 x 92	MIP1506-2GR5
	800	1	72 x 72	MIP1508-1PR5
		2	72 x 72	MIP1508-2PR5
		4	72 x 72	MIP1508-4PR5
		2	92 x 92	MIP1508-2GR5
200	600	1	144 x 144	MIP2006-1SR5
	800	1	144 x 144	MIP2008-1SR5



## Wall Mounting Accessories

### MBP, Modular blank panel



**Description:** Front blank panel to cover unused space or to mount special equipment. Panels are with flanged top and bottom to provide extra stiffness.

**Material:** 1.2mm steel plate.

**Finish:** Structure powder paint, RAL 7035.

**Pack quantity:** 1 piece with mounting material.

H	W	MCCB	Steps of 50mm	Part No.
50	600		1	MBP0506R5
	800		1	MBP0508R5
100	600		2	MBP1006R5
	800		2	MBP1008R5
150	600		3	MBP1506R5
	800		3	MBP1508R5
200	600	250A (H)	4	MBP2006R5
	800	250A (H)	4	MBP2008R5
300	600	250A (V)	6	MBP3006R5
	800	250A (V)	6	MBP3008R5
450	600	400A (V)	9	MBP4506R5
	800	400A (V)	9	MBP4508R5
600	600	800A (V)	12	MBP6006R5
	800	800A (V)	12	MBP6008R5
900	600	1600A (V)	18	MBP9006R5
	800	2500A (V)	18	MBP9008R5

H: MCCB in horizontal assembly, V: MCCB in vertical assembly.

### AMM, Adjustable mounting plate



**Description:** Allowing fixing MCCBs of any manufacturer (machining is required). Requires MD depth adjustment kit.

**Material:** 2mm galvanized steel plate.

**Pack quantity:** 1 piece.

H	W	MCCB	Steps of 50mm	Part No.
194	600	125/160/250A (H)	4	AMM604
244	600	125/160/250A (V)	6	AMM606
294	600	400A (V)	9	AMM609
194	800	125/160/250A (H)	4	AMM804
244	800	125/160/250A (V)	6	AMM806
294	800	400A (V)	9	AMM809

H: MCCB in horizontal assembly, V: MCCB in vertical assembly.

### MD, Modular system depth adjust Kit



**Description:** Mounted on to the back of the ACM or CMV modular system frames, allowing the fixing of the AMM mounting plate. The mounting plate is adjustable in depth between 60mm and 150mm from the front covers.

**Material:** 2mm galvanized steel.

**Pack quantity:** 4 pieces with fitting material.

**Part No.**

MD4