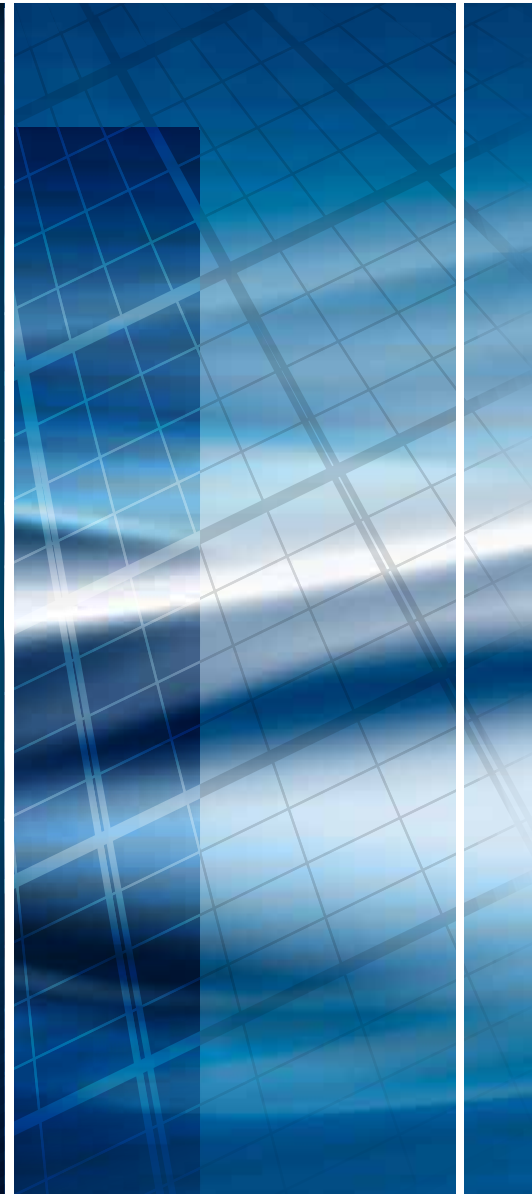




NEW PRODUCTS

ELDON STAINLESS STEEL FLOORSTANDING RANGE
GENERAL CATALOGUE 90





Stainless steel floor standing enclosures



MCSS, EKSS - stainless steel enclosures, single door version

Innovative Design:

Combinable range (MCSS/MCDS):

Profile manufactured using 1.5mm stainless steel, folded 8 times of which two are double bends (3mm thickness). Continuously laser welded from top to bottom.

Compact range (EKSS/EKDS):

Symmetrical frame design with integrated front/rear 25mm hole pattern

Superior finish:

Designed to meet the highest standard levels in terms of finish and functionality.

Corner formed doors and panels, stainless steel locking system, polished flush weldings.

Easy to work with:

The new lines are standardized around Eldon's MultiFlex platform. Full compatibility with MultiFlex accessories range.



New chrome-plated lock cover



Detail of the formed door



New stainless steel profiles

MCSS - MultiFlex stainless steel floor standing enclosure, single door version



Protection:
IP 56; NEMA 12, 13; IK 10

Dimensions:
H: 1800-2000
W: 600-1000
D: 500-600

Certificates:


MCDS - MultiFlex stainless steel floor standing enclosure, double door version



Protection:
IP 55; NEMA 12, 13; IK 10

Dimensions:
H: 1800-2000
W: 1000-1200
D: 500-600

Certificates:


EKSS - MultiK stainless steel floor standing enclosure, single door version



Protection:
IP 66; NEMA 4x, 12, 13; IK 10

Dimensions:
H: 1400-2000
W: 600-1000
D: 400

Certificates:


EKDS - MultiK stainless steel floor standing enclosure, double door version



Protection:
IP 55; NEMA 12, 13; IK 10

Dimensions:
H: 1200-2000
W: 1200-1600
D: 400

Certificates:


Technical Information

MCSS Material: AISI 304 pre-grained stainless steel / AISI 316L

Frame: 1.5mm.

Door: 2mm.

Rear, roof and side panels: 1.5mm.

Bottom plates: 1.5mm stainless steel.

Mounting plate: 2.7mm galvanized steel.

EKSS Material: AISI 304 pre-grained stainless steel / AISI 316L

Body and removable rear panel: 1.5mm.

Door: 2mm.

Bottom Plates: 1.5mm.

Mounting plate: 2.7mm galvanized steel.

Door: Mounted with four hinges allowing left or right hand opening. Including door frame with 25mm hole pattern.

Rear panel: Fitted by M6 torx screws. Standard facilities for rear door mounting.

Side panels: Supplied as an accessory (MCSS).

Roof panel: Removable (MCSS). Fixed (EKSS)

Lock: Espagnolette 4-point locking system. Does not interfere with the enclosure inner space. Standard double-bit 3mm lock. Can be exchanged for standard inserts or Euro-cylinder and swing handle.

Bottom plates: One piece bottom plate with injected polyurethane gasket to ensure maximum sealing.

Mounting plate: Double folded and slides into position. Adjustable in depth by steps of 25mm with the MPD02 accessory. Mounting plate

is delivered attached on the outside of the enclosure packaging.

Earthing: All panels are earthed through their fittings and are equipped with a separate earthing stud.

Finish: 240s pre-grained stainless steel (0.5 microns average).

Delivery: Frame with fitted door, rear panel, roof panel, bottom plates, mounting plate and door frame. Delivery also includes earthing bolts. Delivered on a pallet with identical width as the enclosure to allow suiting without removal. All packing material is recyclable. Mounting plate is on the outside.

Mounting requirement: Standard delivery ready for combined installation. For stand-alone installation add side panels.

Important note: The stainless steel Excellence range will be phased out after more than 20 years in the market. It will be replaced by the new Stainless steel MultiFlex & MultiK enclosures lines. The table below will make it easier to convert the old into the new references:

Conversion table:



Stainless steel combinable version, single door enclosure

Enclosure Dimensions			Old reference	New reference	
H	W	D	Part no. AISI 304	Part No. AISI 304	Part No. AISI 316 L
1800	600	500	CSS18065	MCSS18065	MCSS18065-316*
	800	500	CSS18085	MCSS18085	MCSS18085-316*
	1000	500	CSS18105	MCSS18105	MCSS18105-316*
2000	600	600	CSS20066	MCSS20066	MCSS20066-316*
	800	600	CSS20086	MCSS20086	MCSS20086-316*
	1000	600	CSS20106	MCSS20106	MCSS20106-316*

*Delivery time upon request

Stainless steel combinable version, double door enclosure

Enclosure Dimensions			Old reference	New reference	
H	W	D	Part no. AISI 304	Part No. AISI 304	Part No. AISI 316 L
1800	1000	500	CDS18105	MCDS18105	MCDS18105-316*
	1200	500	CDS18125	MCDS18125	MCDS18125-316*
2000	1200	600	CDS20126	MCDS20126	MCDS20126-316*

*Delivery time upon request



Stainless steel compact version, single door enclosure

Enclosure Dimensions			Old reference	New reference	
H	W	D	Part no. AISI 304	Part No. AISI 304	Part No. AISI 316 L
1400	800	400	-	EKSS14084	EKSS14084-316*
1600	600	400	KSS16064	EKSS16064	EKSS16064-316*
	800	400	KSS16084	EKSS16084	EKSS16084-316*
	1000	400	KSS16104	EKSS16104	EKSS16104-316*
1800	600	400	KSS18064	EKSS18064	EKSS18064-316*
	800	400	KSS18084	EKSS18084	EKSS18084-316*
	1000	400	KSS18104	EKSS18104	EKSS18104-316*
2000	800	400	KSS20084	EKSS20084	EKSS20084-316*
	1000	400	KSS20104	EKSS20104	EKSS20104-316*

*Delivery time upon request

Stainless steel compact version, double door enclosure

Enclosure Dimensions			Old reference	New reference	
H	W	D	Part no. AISI 304	Part No. AISI 304	Part No. AISI 316 L
1200	1200	400	-	EKDS12124	EKDS12124-316*
1600	1200	400	KDS16124	EKDS16124	EKDS16124-316*
1800	1200	400	KDS18124	EKDS18124	EKDS18124-316*
	1600	400	KDS18164	EKDS18164	EKDS18164-316*
2000	1200	400	KDS20124	EKDS20124	EKDS20124-316*
	1600	400	KDS20164	EKDS20164	EKDS20164-316*

*Delivery time upon request



New solution: Double door enclosures Nema 4x/IP66



Innovative Design:

Welded vertical divider with individual doors and independent locking system.

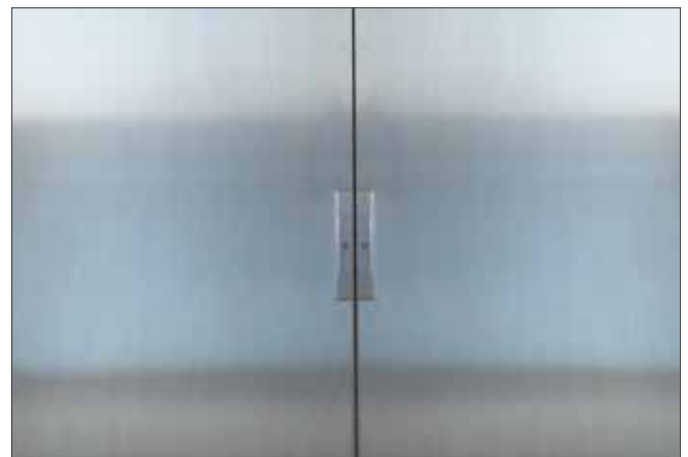
The Eldon EKDS* enclosure, with its NEMA4X / IP66 protection rate, is specially designed for use in sanitary wash down production environments.

**Note: To order an EKDS enclosure with Nema 4x rating, please add "-4x" to the cat.no, e.g. EKDS 1822.4-4x. Delivery times upon request.*

New EKDS* double door enclosure Nema 4x/ IP66 version



Detail of the welded vertical divider



Detail of the enclosures with both doors closed



Eldon GmbH

Rhönstraße 2a
D-64572 Büttelborn
Germany
Tel: +49/6152-98155
Fax: +49/6152-51158
eldon.de@eldon.com
www.eldon.de

Eldon CS Pvt. Limited

A 1/ 285/1 GIDC, Umbergoan
Dist. Valsad, Gujarat
India
Pin: 396171
India
Tel +91 92 12 74 72 39
sales.india@eldon.com
www.eldon.com/in

Eldon N.V.

Postbus 38
Tussendiepen 64-66
NL-9200 AA Drachten
The Netherlands
Tel: +31 512 58 01 23
Fax: +31 512 51 71 17
info.nl@eldon.com
www.eldon.nl

Eldon Denmark

Postbus 38
Tussendiepen 64-66
NL-9200 AA Drachten
The Netherlands
Tel +45 702 769 60
Fax +45 702 769 20
info.nl@eldon.com
www.eldon.com/dk

Eldon A/S

Energiveien 8
2050 JESSHEIM
Norway
Tel: +47/67-972500
Fax: +47/63-980480
eldon.no@eldon.com
www.eldon.no

SC Eldon SRL

Calle Bruxelles no. 4
Industrial Park Graells & Lionch Prejmer
057165 Prejmer, Brasov
Romania
Tel +40 268 308 200
eldon.ro@eldon.com
www.eldon.com

Eldon AB

Egnahemsgatan 39
S-571 83 NASSJÖ
Sweden
Tel: +46 (0)10 555 95 00
Fax: +46 (0)10 555 95 90
eldon.se@eldon.com
www.eldon.se

Eldon Electric Limited

Rother Way
Hellaby Industrial Estate
Rotherham
S66 8QN
United Kingdom
Tel: +44 1709 701234
Fax: +44 1709701209
eldon.uk@eldon.com
www.eldon.com/uk

Eldon S.A.

Bedrijvenzone Planet 1, 6C
Tollaen 103
1932 Sint-Stevens-Woluwe Bruxelles,
Belgium
Tel: +32/2-3891610
Fax: +32/2-3850329
Email: eldon.be@eldon.com

Eldon Spain

ELDON España S.A.U. Ctra. de Fuensanta,
KM 1.2
Polígono Industrial
E-23600 Martos (Jaén)
Spain
Tel: +34 95 355 10 00
Fax: +34 95 355 15 39
Email: eldon.es@eldon.com

