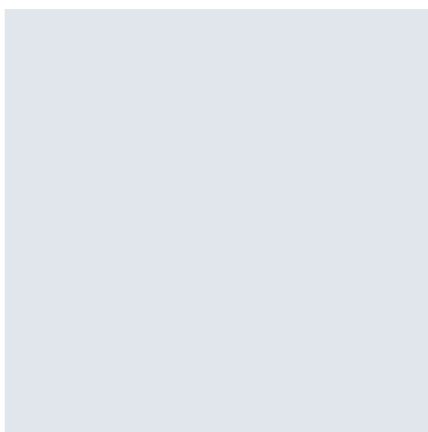
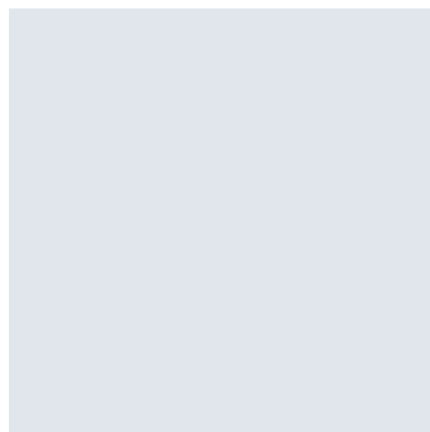
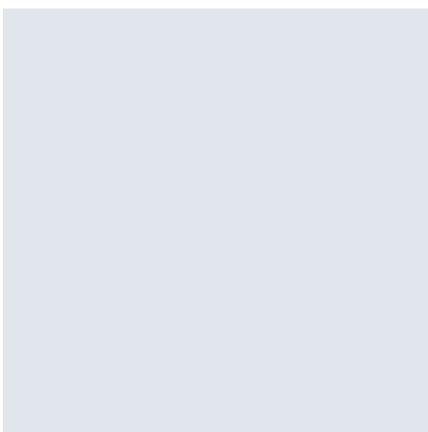
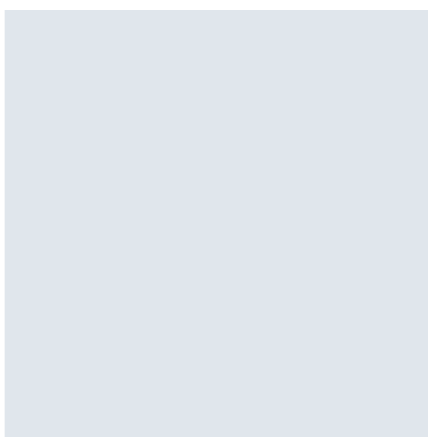


**ENSTO**

# SCREWLESS TERMINAL BLOCKS

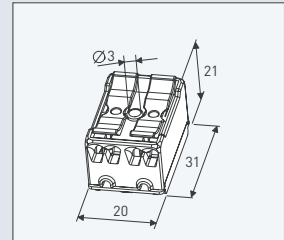
KC 50 -series



# Screwless terminal blocks KC 50 –series

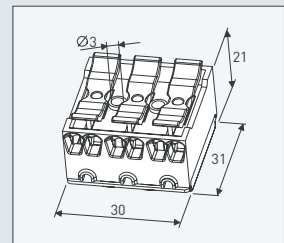
## 2-pole screwless terminal block

PART NO	SNAP IN PINS	EARTH PIN	EARTH BRACKET	MARKING	WEIGHT (g)	PACKAGE QUANTITY
KC 50.20				*)	8.7	500
KC 50.22	x			*)	8.9	500



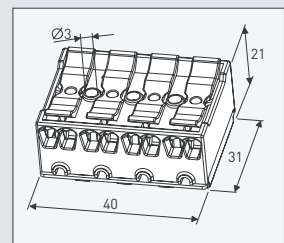
## 3-pole screwless terminal block

PART NO	SNAP IN PINS	EARTH PIN	EARTH BRACKET	MARKING	WEIGHT (g)	PACKAGE QUANTITY
KC 50.30				*)	12.8	500
KC 50.31	x	x		N⊕L	13.2	500
KC 50.32	x			*)	13.0	500
KC 50.33			x	*)	14.6	500
KC 50.34	x		x	*)	14.8	500
KC 50.35			x NEW	*)	13.9	500
KC 50.36	x		x NEW	*)	14.1	500



## 4-pole screwless terminal block

PART NO	SNAP IN PINS	EARTH PIN	EARTH BRACKET	MARKING	WEIGHT (g)	PACKAGE QUANTITY
KC 50.40				*)	17.0	250
KC 50.41	x	x		N⊕1 2	17.4	250
KC 50.42	x			*)	17.2	250
KC 50.43			x	*)	18.8	250
KC 50.44	x		x	*)	19.0	250
KC 50.45			x NEW	*)	18.1	250
KC 50.46	x		x NEW	*)	18.3	250

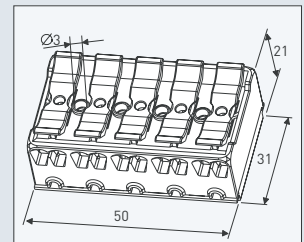


\*) Customized markings on request



### 5-pole screwless terminal block

PART NO	SNAP IN PINS	EARTH PIN	EARTH BRACKET	MARKING	WEIGHT (g)	PACKAGE QUANTITY
KC 50.50				*)	21.2	250
KC 50.51	x	x		3 N $\oplus$ 1 2	21.6	250
KC 50.52	x			*)	21.4	250
KC 50.53			x	*)	23.0	250
KC 50.54	x		x	*)	23.2	250
KC 50.55			x NEW	*)	22.3	250
KC 50.56	x		x NEW	*)	22.5	250

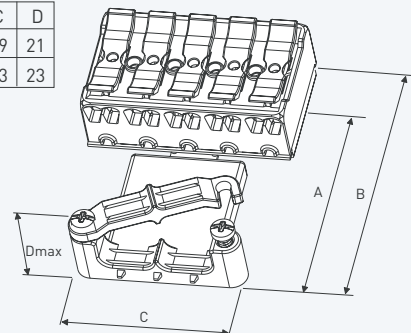


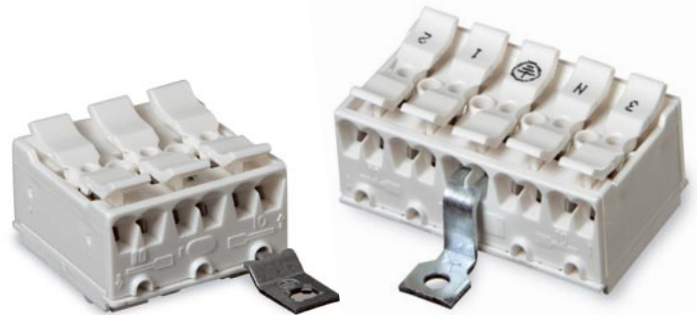
\*) Customized markings on request

### Strain relief units

NUMBER OF CABLES	PART NO.	DESCRIPTION	FOR CABLES WITH OUTSIDE Ø	WEIGHT (g)	PACKAGE QTY
1	KCL 50	Unassembled	4.5 - 12.0	4.5	250
1	KCL 50.1	Assembled	4.5 - 8.5	4.5	250
1	KCL 50.2	Assembled	8.5 - 12.0	4.5	250
2	KCL 51	Unassembled	6.0 - 13.5	6.2	250
2	KCL 51.1	Assembled	6.0 - 9.5	6.2	250
2	KCL 51.2	Assembled	9.5 - 13.5	6.2	250

	A	B	C	D
KCL 50	48	63	29	21
KCL 51	54	69	43	23

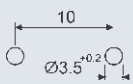




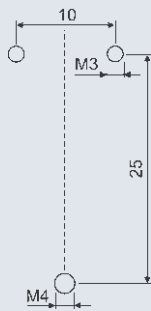
The new earth bracket (to the left) enables use of all main terminals in KC-terminal blocks.

### Mounting Hole Dimensions

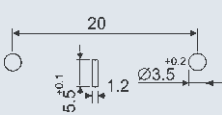
KC 50.22



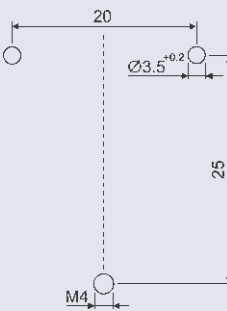
KC 50.30, KC 50.33, KC 50.35  
KC 50.40, KC 50.43, KC 50.45  
KC 50.50, KC 50.53, KC 50.55



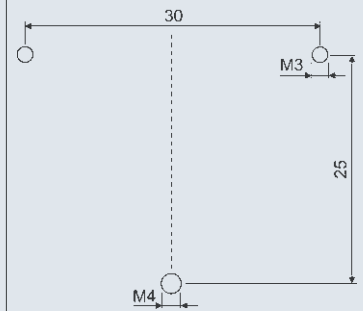
KC 50.31  
KC 50.41  
KC 50.51



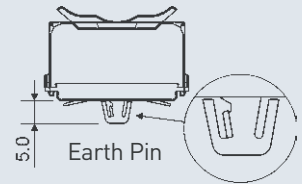
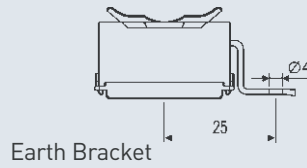
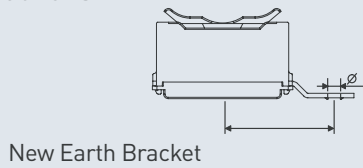
KC 50.32, KC 50.34, KC 50.36  
KC 50.42, KC 50.44, KC 50.46  
KC 50.52, KC 50.54, KC 50.56



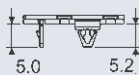
KC 50.50  
KC 50.53



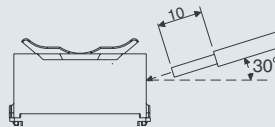
### Earthing Connections



### Features



Snap in Pin

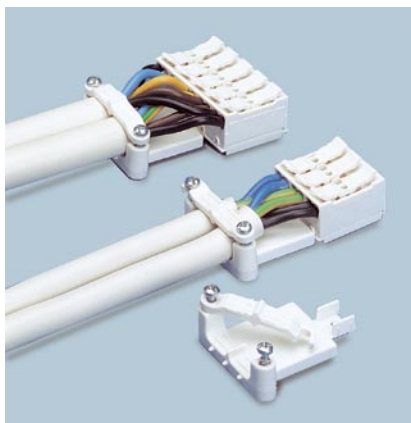


The insertion angle of the wires is 30° which provides easy access to connect wires even when the block is difficult to reach.

# Instructions



KCL 50.1, KCL 50.2, KCL51.1 and KCL51.2 are delivered ready assembled with screws. Screws are Posidrive (Pz 1).



The clamp is drawn over the cable against the screw and then tightened.



With KCL51 you fix both the incoming and outgoing cable. The strain relief unit is fixed together with the screwless terminal block.

## Wire Range

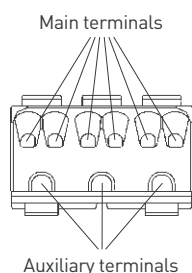
### Main terminals on both sides:

2 x 0,5 - 2,5 mm<sup>2</sup>, stripping of wires:

- 8 - 12 mm (0,5 - 0,75 mm<sup>2</sup> wires)
- 10 - 12 mm (1,0 - 2,5 mm<sup>2</sup>)

### Auxiliary terminals on both sides:

1 x 0,5 - 0,75 mm<sup>2</sup>, stripping of wires  
8 - 12 mm



## Main Characteristics

- Electrical values 16 A / 2,5 mm<sup>2</sup> / 450 V
- For solid and stranded wires
- Insertion of wires is easy even with 0,5 mm<sup>2</sup> wires: limited push-in force is required
- After insertion, the wires are locked tightly into place: the contact pressure is sufficient even when the wire is bent
- 6 wire entries per pole
- Release mechanism for wires on both sides
- Mounting with M3 screws or with snap-in pins
- For production tests the terminal blocks have Ø 2,3 mm test holes for electrode with min. pin length 14 mm
- Spacing 10 mm between poles.

## Material Information

- Insulation material: Polycarbonate (PC). Self-extinguishing plastic according to UL 94: V2. Temperature resistance in continuous operation 110 °C, temporarily 140 °C. The plastic material is halogen- and cadmiumfree and can be recycled.
- Connectors: tinned copper and spring steel.
- Earth Bracket material Zinc- and yellow chrome-plated steel, Earth Pin material tin bronze.

## Approvals



For standards EN 60998-1,  
EN 60998-2-2



**BUILDING TECHNOLOGY**

ENSTO ELECTRIC OY  
VECKJÄRVENTIE 1, P.O.BOX 110  
06101 PORVOO, FINLAND  
TEL. +358 204 76 21  
FAX +358 204 76 2753  
ELECTRIC@ENSTO.COM  
WWW.ENSTO.COM