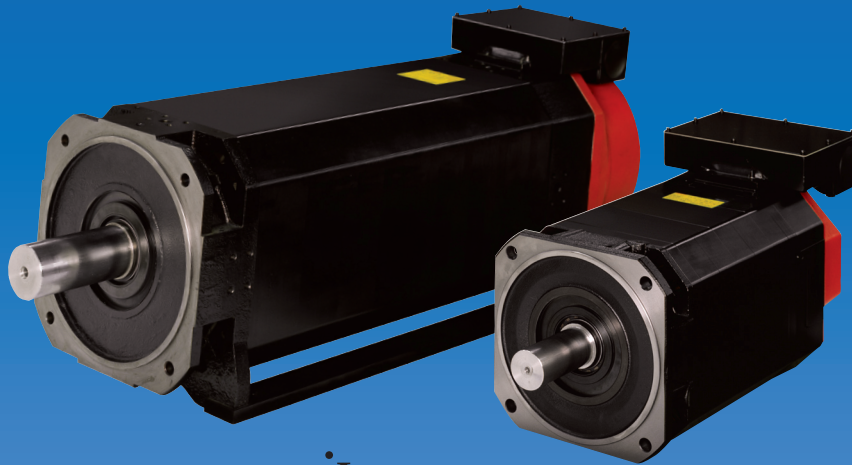


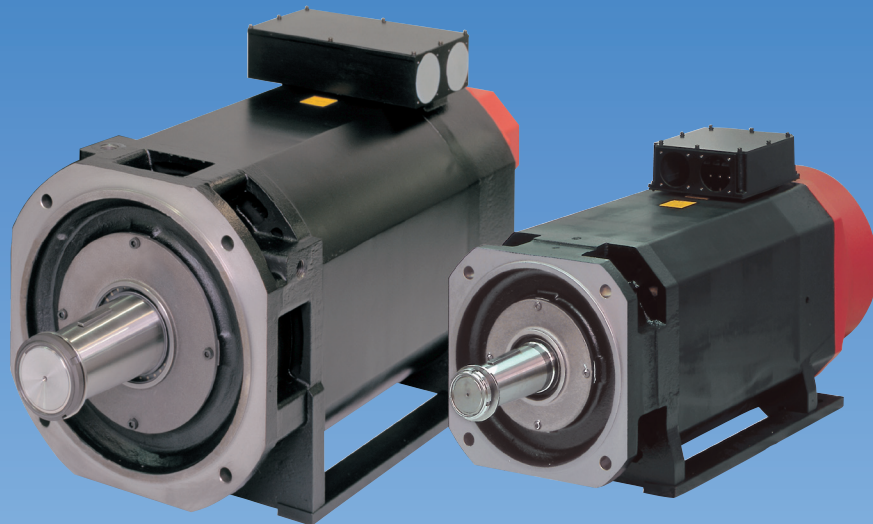
Large Spindle Motor Suited to Large Size Machine Tools

FANUC AC SPINDLE MOTOR

α i series



α i series



α iS series

LARGE SPINDLE MOTOR series

Features

- Various motor models with continuous rated output from 30kW to 200kW
- Further output enabled by “Multi Motors DriveTechnology”
- High energy-saving system with “Power source regeneration” to convert kinetic energy to electric energy at deceleration and return to power source

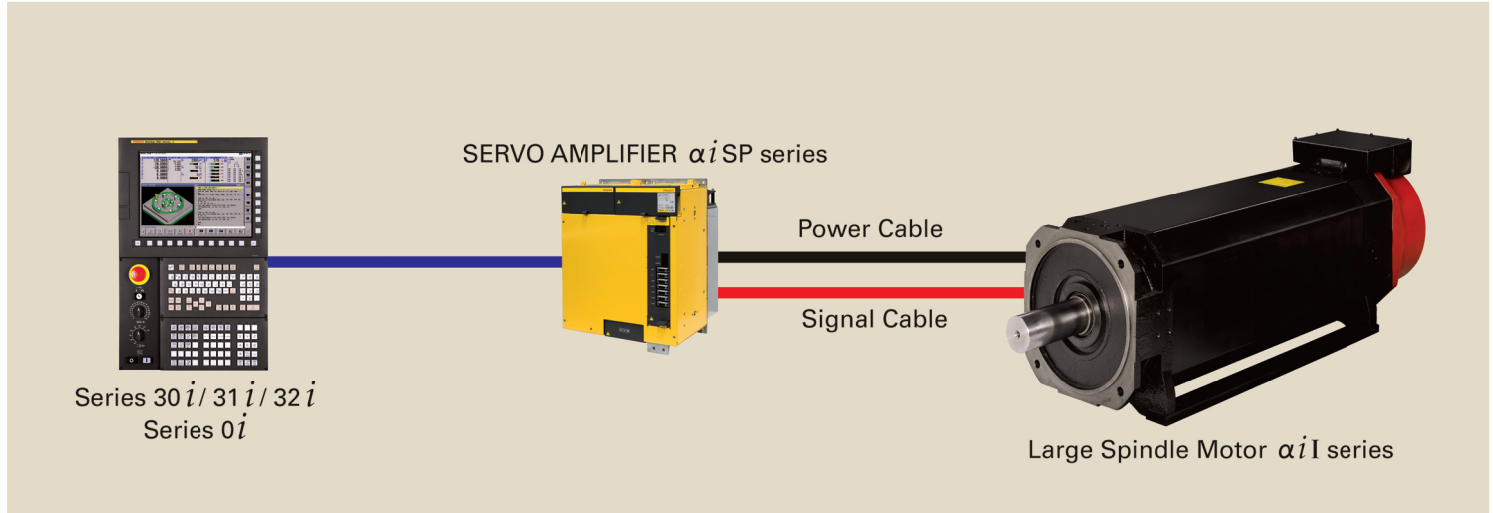
Large Spindle Motor Suited to Large Size Machine Tools

FANUC AC SPINDLE MOTOR αi series

FANUC AC SPINDLE MOTOR $\alpha i I$ series

Feature

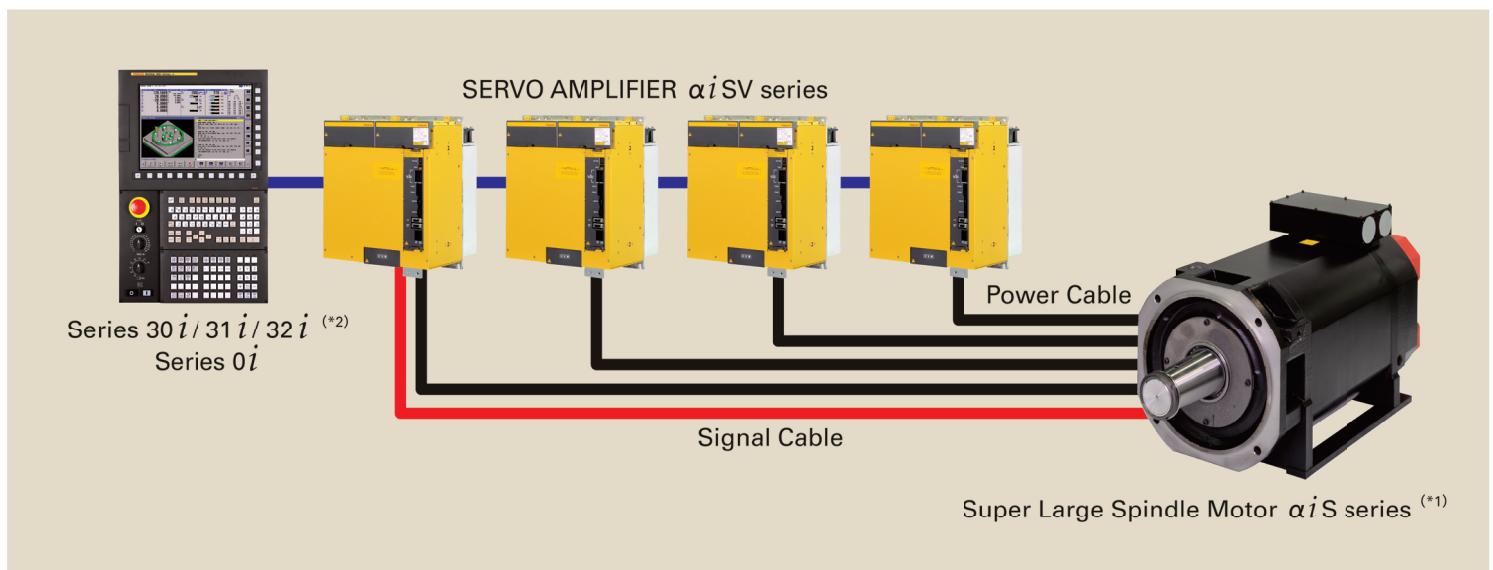
- High power up to high speed by optimum winding design and effective cooling structure
- Lower motor temperature by optimum control of magnetic flux



FANUC AC SPINDLE MOTOR $\alpha i S$ series

Feature

- High power and large torque models suited to large size machine tools
- Compact and large torque achieved by neodymium magnets

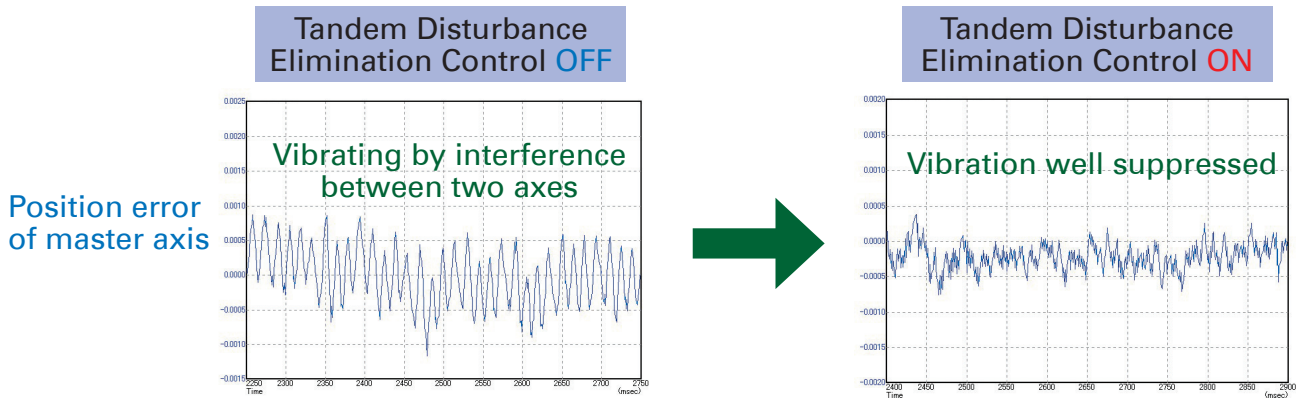
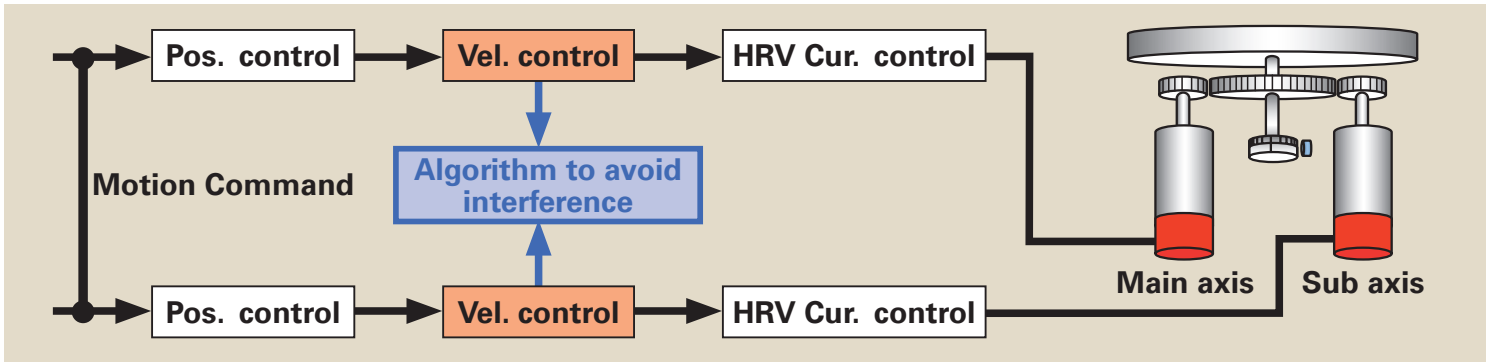


*1) $\alpha i S$ 1000HV and $\alpha i S$ 2000HV are driven by servo axis using "Spindle control with servo motor function".
As for detail, please refer to specification manual of CNC.

*2) Tandem Control is applied for combination with Series 30i/31i/32i.
PWM Distribution Module (PDM) is necessary for combination with Series 0i.

Control Technologies (HRV Control)

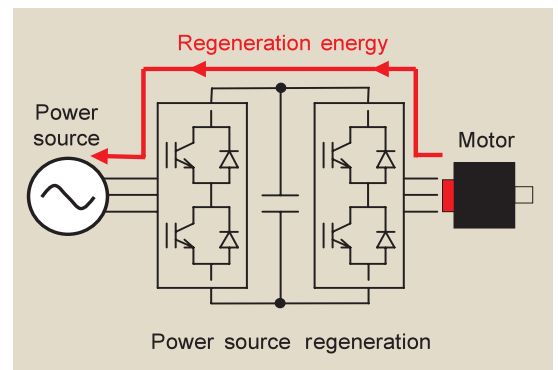
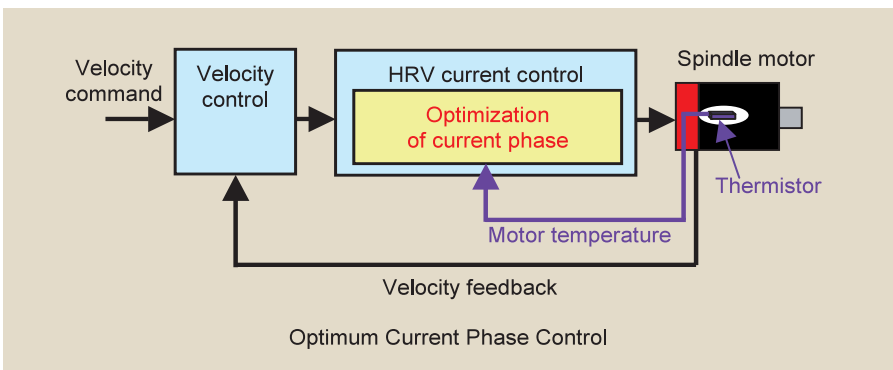
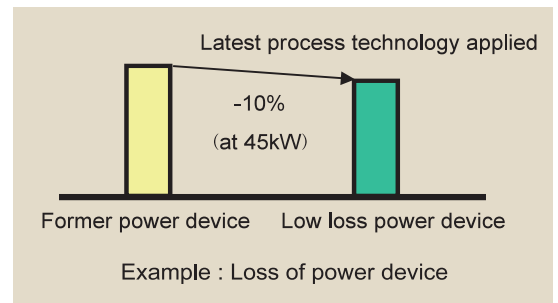
- FANUC Control technology (HRV Control) with many achievements on spindle control applied to large spindle system
- Further output achieved by synchronous control of plural motors for one spindle with keeping stability



Example : Effect of Tandem Disturbance Elimination Control

Energy Saving Technologies

- Loss of amplifier reduced by applying the latest power device
- Power consumption largely reduced by Power source regeneration compared with resistor discharge
- Minimum current achieved by Maximum Efficiency Control, with optimizing ratio of excitation current and torque current according to load
- High efficiency spindle control achieved by Optimum Current Phase Control, according to motor temperature



Maintenance and Customer Support

Worldwide Customer Service and Support

FANUC operates customer service and support network worldwide through subsidiaries and affiliates. FANUC provides the highest quality service with the prompt response at any location nearest you.



FANUC Training Center

FANUC Training Center operates versatile training courses to develop skilled engineers effectively in several days.

Inquiries : Yamanakako-mura, Yamanashi, Japan 401-0501

Phone : 81-555-84-6030

Fax : 81-555-84-5540



FANUC CORPORATION

Headquarters Oshino-mura, Yamanashi 401-0597, Japan

Phone: 81-555-84-5555 Fax: 81-555-84-5512 <http://www.fanuc.co.jp>

• America

FANUC FA AMERICA CORPORATION

Tel 1-847-898-5000 Fax 1-847-898-5001

• Europe, the middle east and Africa

FANUC Luxembourg Corporation
 FANUC FA Deutschland GmbH
 FANUC FA France S.A.S.
 FANUC FA UK LIMITED
 FANUC FA Italia S.r.l.
 FANUC FA Iberia S.A.
 FANUC FA Paz, ve Tic. Ltd. Sti.
 FANUC FA Bulgaria Ltd.
 FANUC FA CZ s.r.o.
 FANUC FA Hungary Kft
 FANUC SOUTH AFRICA (PTY) LIMITED
 FANUC AUTOMATION LLC

Tel 352-72-7979-1 Fax 352-727777-403
 Tel 49-7158-187300 Fax 49-7158-187411
 Tel 33-1-4569-6333 Fax 33-1-4569-0325
 Tel 44-1895-634182 Fax 44-1895-676140
 Tel 39-02-4887-291 Fax 39-02-4571-3566
 Tel 34-93-664-4820 Fax 34-93-665-0695
 Tel 90-216-3913548 Fax 90-216-3918133
 Tel 359-2-963-3319 Fax 359-2-963-2873
 Tel 420-234-072-950 Fax 420-234-072-960
 Tel 06-23-507-400 Fax 06-23-507-401
 Tel 27-11-392-3610 Fax 27-11-392-3615
 Tel 7-495-956-9780 Fax 7-495-956-9785

• Asia and Oceania

KOREA FANUC CORPORATION
 TAIWAN FANUC FA CORPORATION
 BEIJING-FANUC Mechatronics CO., LTD.
 FANUC INDIA PRIVATE LIMITED
 FANUC THAI LIMITED
 FANUC MECHATRONICS (MALAYSIA) SDN. BHD.
 PT. FANUC INDONESIA
 FANUC SINGAPORE PTE. LTD.
 FANUC OCEANIA PTY. LIMITED
 FANUC PHILIPPINES CORPORATION
 FANUC VIETNAM LIMITED

Tel 82-55-278-1200 Fax 82-55-284-9826
 Tel 886-4-2359-0522 Fax 886-4-2359-0771
 Tel 86-10-6298-4726 Fax 86-10-6298-4741
 Tel 91-80-2852-0057 Fax 91-80-2852-0051
 Tel 66-2-714-6111 Fax 66-2-714-6120
 Tel 60-3-7628-0110 Fax 60-3-7628-0220
 Tel 62-21-4584-7285 Fax 62-21-4584-7288
 Tel 65-6-567-8566 Fax 65-6-566-5937
 Tel 61-2-8822-4600 Fax 61-2-8822-4666
 Tel 63-2-813-3155 Fax 63-2-813-3157
 Tel 84-8-3824-6638 Fax 84-8-3824-6637

• All specifications are subject to change without notice.

• No part of this catalog may be reproduced in any form.

• The products in this catalog are controlled based on Japan's "Foreign Exchange and Foreign Trade Law". The export from Japan may be subject to an export license by the government of Japan. Further, re-export to another country may be subject to the license of the government of the country from where the product is re-exported. Furthermore, the product may also be controlled by re-export regulations of the United States government. Should you wish to export or re-export these products, please contact FANUC for advice.