

There's no one better than us



67 IB

VERTICAL INTERLOCKED SWITCHED SOCKET-OUTLETS IP67

2010 Innovations

Top quality materials

Made of high performance, blue thermoplastic materials guaranteeing good long-term resistance to impact, UV rays and chemical agents.

Innovative protection

The GEWISS patented innovations introduced in the version with MCB and fuses revolutionise the system of protection of the interlocked switched socket-outlets.

Intelligent solutions

Thanks to the design co-ordination from 16 to 63A and the standardised dimensions of sizes 16-32A, you can make good quality installations, taking advantage of the same QDIN boards and accessories; they're fully interchangeable with the previous GEWISS SBF range.



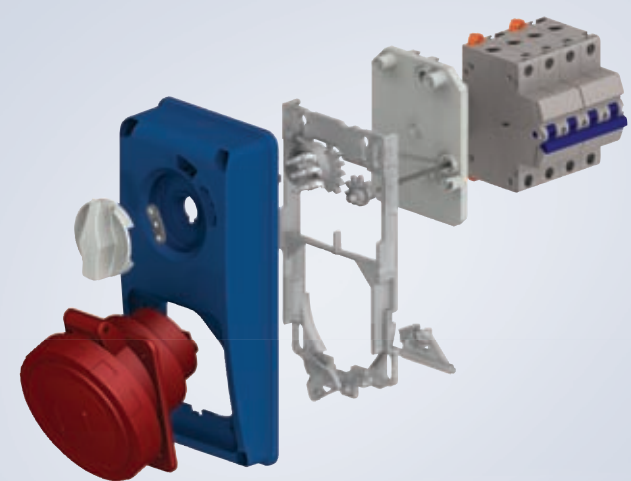
with rotary switch



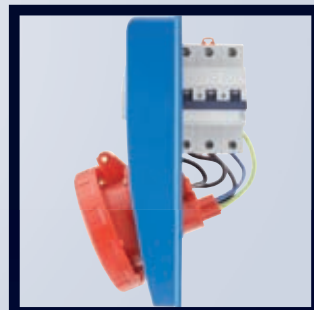
with rotary switch and fuse protection



AUTOMATIKA - with circuit breaker protection



AUTOMATIKA - with circuit breaker protection



Reduced spaces

The integration of the miniature circuit breaker on the front of the socket-outlet protects the load while reducing the space on the board.



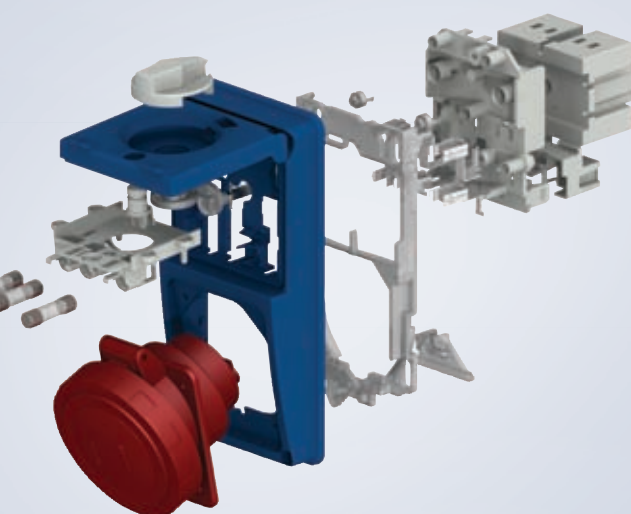
Visualisation

The control LED of each single line phase are located on the front, showing the operation status of the circuit breaker and the presence of voltage.



Intuitive

The automatic circuit breaker can be directly reset via the external knob.

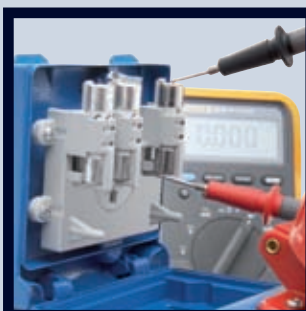


with rotary switch and fuse protection



Simple

The innovative fuse-holder system automatically removes the fuses from the base with the opening of the door (with 1/4 turn tamper-proof screws).



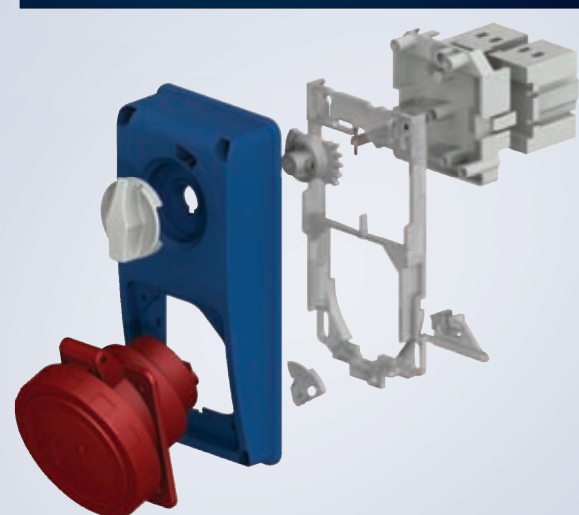
Practical

The fuse-holder system built into the front removes and simultaneously isolates all the fuses, facilitating both access and maintenance operations.



Safe

The automatic safety reset prevents the switch disconnecter being activated if the door is not fully closed; the interlock function prevents the door being opened and guarantees the IP degree of protection.



with rotary switch



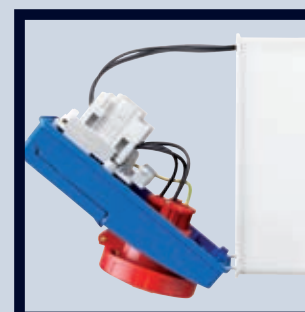
Ergonomic

The knob has been designed to avoid the build-up of dust, and to ensure an ergonomic grip. The knob can also be padlocked in the ON/OFF position, to provide greater safety.



Reliable

The rotary switch in AC3 category guarantees high electric performance and lifespan, even when controlling highly inductive loads.



Practical

The hinged opening of the front makes wiring and maintenance operations easier.



				VERTICAL INTERLOCKED SWITCHED SOCKET-OUTLETS IP67						VERTICAL INTERLOCKED SWITCHED SOCKET-OUTLETS FOR HEAVY DUTY IP66					
Rated current In (A)	Rated voltage Un (V)	No. of poles	Reference h.	with rotary switch, without bottom		with rotary switch and fuse-holder base, without bottom		AUTOMATIKA with miniature circuit breaker, without bottom		with rotary switch, without bottom		with rotary switch and fuse-holder base, without bottom		for modular devices without bottom Max 6 modules	
16	24	2P	w.r.	GW 66 359 N	GW 66 259 N							GW 66 886	GW 66 998		
	110 110 - 130	2P + N	4	GW 66 301 N	GW 66 201 N	GW 66 323 N	GW 66 223 N	GW 66 151 N	GW 66 051 N	GW 66 535	GW 66 501	GW 66 801	GW 66 951	GW 66 824	GW 66 974
		3P + N	4	GW 66 302 N	GW 66 202 N	GW 66 324 N	GW 66 224 N	GW 66 152 N	GW 66 052 N	GW 66 536	GW 66 502	GW 66 802	GW 66 952	GW 66 825	GW 66 975
	230 200 - 250	2P + N + PE	4	GW 66 303 N	GW 66 203 N	GW 66 325 N	GW 66 225 N	GW 66 153 N	GW 66 053 N	GW 66 537	GW 66 503	GW 66 803	GW 66 953	GW 66 826	GW 66 976
		3P + N + PE	4	GW 66 304 N	GW 66 204 N	GW 66 326 N	GW 66 226 N	GW 66 154 N	GW 66 054 N	GW 66 538	GW 66 504	GW 66 804	GW 66 954	GW 66 827	GW 66 977
	400 380 - 415	2P + N + PE	6	GW 66 305 N	GW 66 205 N	GW 66 327 N	GW 66 227 N	GW 66 155 N	GW 66 055 N	GW 66 539	GW 66 505	GW 66 805	GW 66 955	GW 66 828	GW 66 978
		3P + N + PE	6	GW 66 306 N	GW 66 206 N	GW 66 328 N	GW 66 228 N	GW 66 156 N	GW 66 056 N	GW 66 540	GW 66 506	GW 66 806	GW 66 956	GW 66 829	GW 66 979
	500 480 - 500	2P + N + PE	9	GW 66 307 N	GW 66 207 N	GW 66 329 N	GW 66 229 N	GW 66 157 N	GW 66 057 N	GW 66 541	GW 66 507	GW 66 807	GW 66 957	GW 66 830	GW 66 980
		3P + N + PE	9	GW 66 308 N	GW 66 208 N	GW 66 330 N	GW 66 230 N	GW 66 158 N	GW 66 058 N	GW 66 542	GW 66 508	GW 66 808	GW 66 958	GW 66 831	GW 66 981
	500 480 - 500	3P + N + PE	6	GW 66 309 N	GW 66 209 N	GW 66 331 N	GW 66 231 N	GW 66 159 N	GW 66 059 N	GW 66 543	GW 66 509	GW 66 809	GW 66 959	GW 66 832	GW 66 982
		3P + N + PE	7	GW 66 310 N	GW 66 210 N	GW 66 332 N	GW 66 232 N			GW 66 544	GW 66 510	GW 66 810	GW 66 960	GW 66 833	GW 66 983
			3P + N + PE	7	GW 66 311 N	GW 66 211 N	GW 66 333 N	GW 66 233 N		GW 66 545	GW 66 511	GW 66 811	GW 66 961	GW 66 834	GW 66 984
32	110 110 - 130	2P + N	4	GW 66 312 N	GW 66 212 N	GW 66 334 N	GW 66 234 N	GW 66 162 N	GW 66 062 N	GW 66 546	GW 66 512	GW 66 812	GW 66 962	GW 66 835	GW 66 985
		3P + N	4	GW 66 313 N	GW 66 213 N	GW 66 335 N	GW 66 235 N	GW 66 163 N	GW 66 063 N	GW 66 547	GW 66 513	GW 66 813	GW 66 963	GW 66 836	GW 66 986
		3P + N + PE	4	GW 66 314 N	GW 66 214 N	GW 66 336 N	GW 66 236 N	GW 66 164 N	GW 66 064 N	GW 66 548	GW 66 514	GW 66 814	GW 66 964	GW 66 837	GW 66 987
	230 200 - 250	2P + N + PE	6	GW 66 315 N	GW 66 215 N	GW 66 337 N	GW 66 237 N	GW 66 165 N	GW 66 065 N	GW 66 549	GW 66 515	GW 66 815	GW 66 965	GW 66 838	GW 66 988
		3P + N + PE	6	GW 66 316 N	GW 66 216 N	GW 66 338 N	GW 66 238 N	GW 66 166 N	GW 66 066 N	GW 66 550	GW 66 516	GW 66 816	GW 66 966	GW 66 839	GW 66 989
	400 380 - 415	2P + N + PE	9	GW 66 317 N	GW 66 217 N	GW 66 339 N	GW 66 239 N	GW 66 167 N	GW 66 067 N	GW 66 551	GW 66 517	GW 66 817	GW 66 967	GW 66 840	GW 66 990
		3P + N + PE	9	GW 66 318 N	GW 66 218 N	GW 66 340 N	GW 66 240 N	GW 66 168 N	GW 66 068 N	GW 66 552	GW 66 518	GW 66 818	GW 66 968	GW 66 841	GW 66 991
	500 480 - 500	3P + N + PE	6	GW 66 319 N	GW 66 219 N	GW 66 341 N	GW 66 241 N	GW 66 169 N	GW 66 069 N	GW 66 553	GW 66 519	GW 66 819	GW 66 969	GW 66 842	GW 66 992
		3P + N + PE	6	GW 66 320 N	GW 66 220 N	GW 66 342 N	GW 66 242 N	GW 66 170 N	GW 66 070 N	GW 66 554	GW 66 520	GW 66 820	GW 66 970	GW 66 843	GW 66 993
	500 480 - 500	3P + N + PE	7	GW 66 321 N	GW 66 221 N	GW 66 343 N	GW 66 243 N			GW 66 555	GW 66 521	GW 66 821	GW 66 971	GW 66 844	GW 66 994
		3P + N + PE	7	GW 66 322 N	GW 66 222 N	GW 66 344 N	GW 66 244 N			GW 66 556	GW 66 522	GW 66 822	GW 66 972	GW 66 845	GW 66 995
	400 380 - 440	3P + N + PE	3	GW 66 357 N	GW 66 257 N	GW 66 358 N	GW 66 258 N			GW 66 557	GW 66 523	GW 66 823	GW 66 973	GW 66 846	GW 66 996
63	110 110 - 130	2P + N	4	GW 67 356 N	GW 67 256 N	GW 67 345 N	GW 67 245 N						GW 66 847		GW 66 866
		3P + N	4	GW 67 357 N	GW 67 257 N	GW 67 346 N	GW 67 246 N						GW 66 848		GW 66 867
		3P + N + PE	4	GW 67 358 N	GW 67 258 N	GW 67 347 N	GW 67 247 N						GW 66 849		GW 66 868
	230 200 - 250	2P + N + PE	6	GW 67 359 N	GW 67 259 N	GW 67 348 N	GW 67 248 N						GW 66 850		GW 66 869
		3P + N + PE	6	GW 67 360 N	GW 67 260 N	GW 67 349 N	GW 67 249 N						GW 66 851		GW 66 870
	400 380 - 415	3P + N + PE	9	GW 67 361 N	GW 67 261 N	GW 67 350 N	GW 67 250 N						GW 66 852		GW 66 871
		3P + N + PE	9	GW 67 362 N	GW 67 262 N	GW 67 351 N	GW 67 251 N						GW 66 853		GW 66 872
	500 480 - 500	3P + N + PE	6	GW 67 363 N	GW 67 263 N	GW 67 352 N	GW 67 252 N						GW 66 854		GW 66 873
		3P + N + PE	6	GW 67 364 N	GW 67 264 N	GW 67 353 N	GW 67 253 N						GW 66 855		GW 66 874
	500 480 - 500	3P + N + PE	7	GW 67 365 N	GW 67 265 N	GW 67 354 N	GW 67 254 N						GW 66 856		GW 66 875
		3P + N + PE	7	GW 67 366 N	GW 67 266 N	GW 67 355 N	GW 67 255 N						GW 66 857		GW 66 876

NEW: available from June 2010

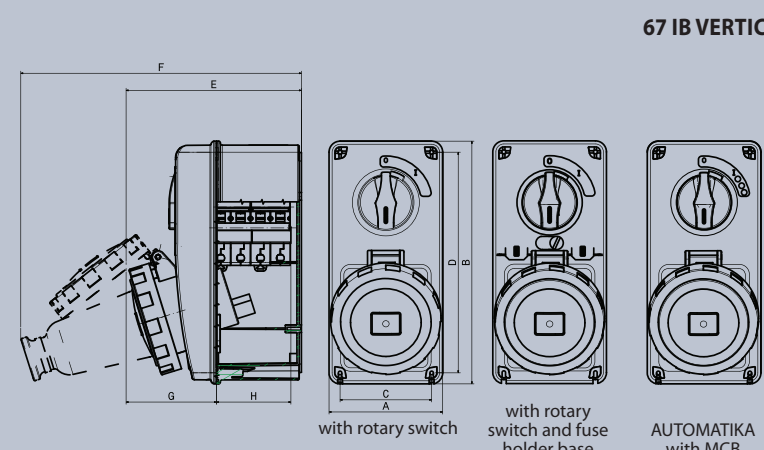
Codes with an "N" suffix refer to the products of the new range of vertical interlocked switched socket-outlets IP67, and correspond to the product codes of the previous range without the letter "N" (apart from the AUTOMATIKA version); they can therefore be installed on the Q-DIN boards of the previous SBF versions, allowing any replacement or modification even on boards already installed. Using the GW 66 715 N adapters for 16-32A versions, and GW 66 716 N for 63A versions, they can also be installed on the Q-DIN boards or modular bases of the previous CBF versions.

COMPLEMENTARY ITEMS															
		MODULAR BASES			DISTRIBUTION BOARDS				MODULAR BASES WITH WINDOW PANEL			LID/BOXES			
67 IB VERTICAL RANGE		GW 66 690	GW 66 691	GW 66 694	GW 68 025 N (10 modules)	GW 68 010 N (14 modules)	GW 68 015 N (20 modules)				GW 66 709 N	GW 66 683 N (cannot be used for SELV 24V)	GW 66 678 N		
		GW 66 693**				GW 68 010* (12 modules)	GW 68 022 N (20 modules) 1 socket-outlet 63A 2 socket-outlets 16/32A				GW 66 709*				
66 IB RANGE FOR HEAVY-DUTY USE		GW 66 696	GW 66 697	GW 66 698				GW 66 781 (6 modules)	GW 66 782 (12 modules)	GW 66 783 (18 modules)	GW 66 707		GW 66 685		
		GW 66 700						GW 66 784 (6 modules)							

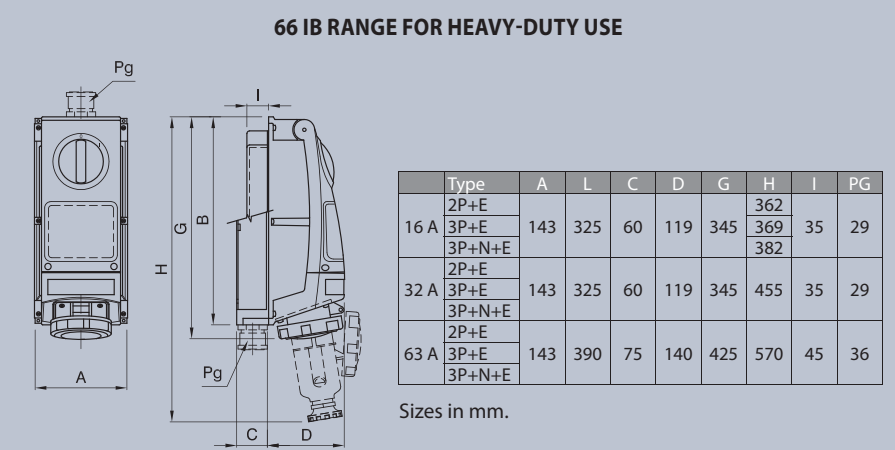
NEW: available from June 2010

* The codes refer to the products of the previous range.
** Use with a GW 66 716 N adapter.

Dimensions



Type	A	L	C	D	E	F	G	Rotary switch Fuse-holder base AUTOMATIKA		
								H	I	J
16 A 2P+E	103	220	83	200	149	239	74	57	57	67.5
16 A 3P+E	103	220	83	200	151	248	76	57	57	67.5
16 A 3P+N+E	103	220	83	200	151	261	76	57	57	67.5
32 A 2P+E	103	220	83	200	156	276	81	57	57	67.5
32 A 3P+E	103	220	83	200	156	276	81	57	57	67.5
32 A 3P+N+E	103	220	83	200	157	277	82	57	57	67.5
63 A 2P+E	145	270	120	245	181	329	101	49.5	57	
63 A 3P+E	145	270	120	245	181	329	101	49.5	57	
63 A 3P+N+E	145	270	120	245	181	329	101	49.5	57	



Type	A	L	C	D	G	H	I	J	Pg
16 A 3P+E	143	325	60	119	345	369	35	29	
32 A 2P+E	143	325	60	119	345	455	35	29	
32 A 3P+E	143	325	60	119	345	455	35	29	
63 A 2P+E	143	390	75	140	425	570	45	36	
63 A 3P+E	143	390	75	140	425	570	45	36	

To find out about the new components of the GEWISS industrial system, take a look at the "68 Q-DIN/Q-BOX distribution boards" and "68 Q-MC energy and service distribution terminals" leaflets that you can get from your local distributor.