

The light
of innovation

METROLIGHT

LED MODULAR FLUSH-MOUNTING ELEMENTS

Innovations

Lighting freedom

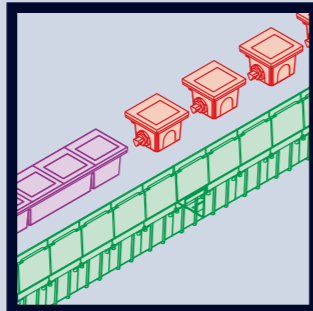
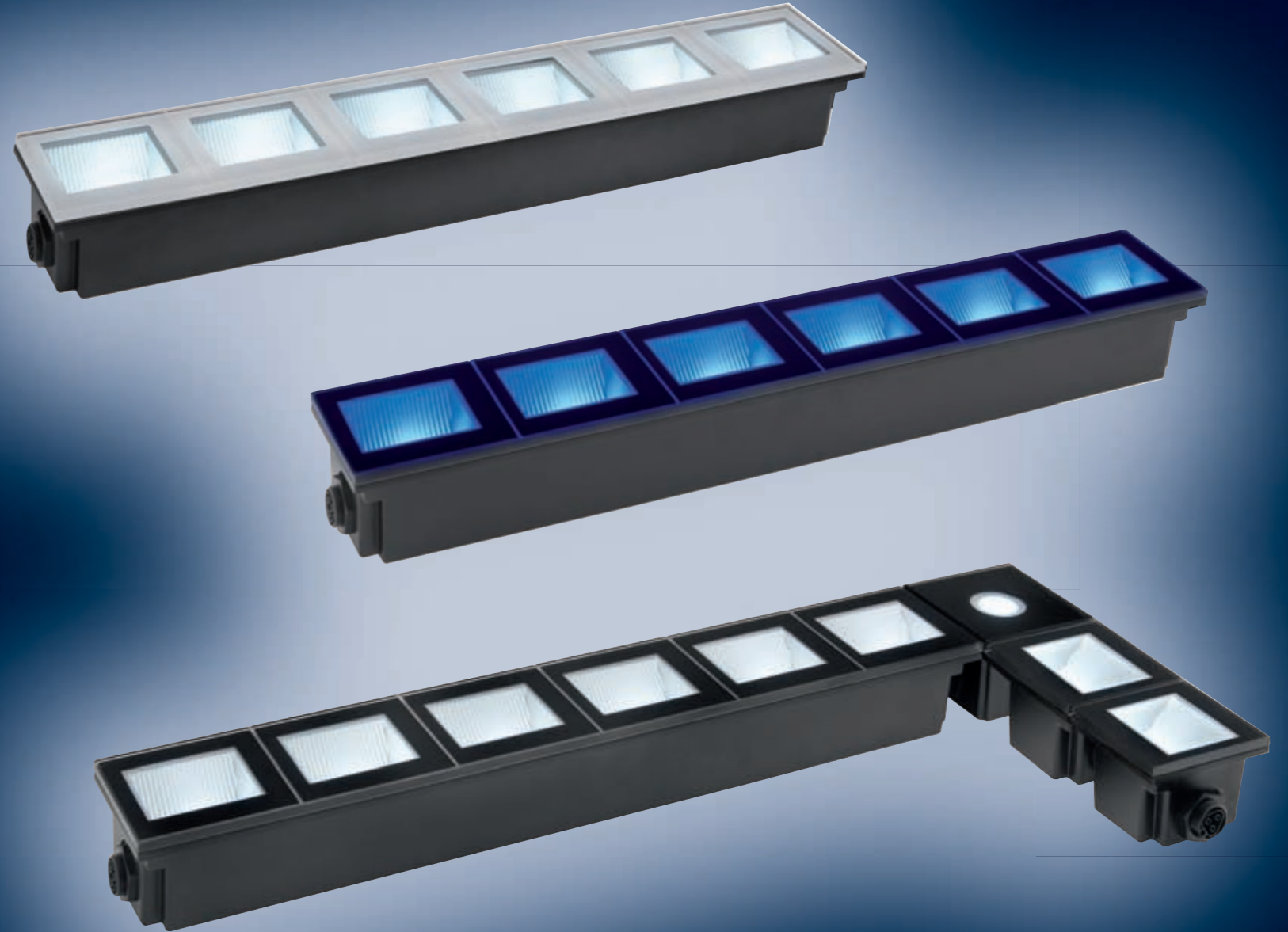
Metrolight is the LED-based lighting system with Wallwasher optic, consisting of modules that can be combined to distribute the light evenly throughout every indoor and outdoor course.

Beauty and quality

Designed to fit perfectly into any context (pedestrian areas, walls, entrance perimeters, scene effects), Metrolight is made of glass and aluminium, combining technology with elegance.

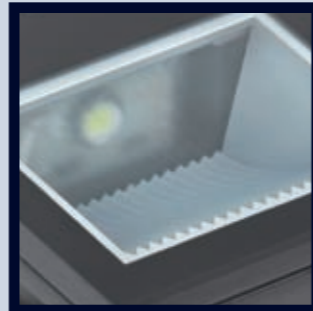
Beyond every limit

The innovative 230V LED source functions without a power supply, allowing the designers to overcome the limits of conventional solutions (i.e. length, geometries and number of sources that can be powered).



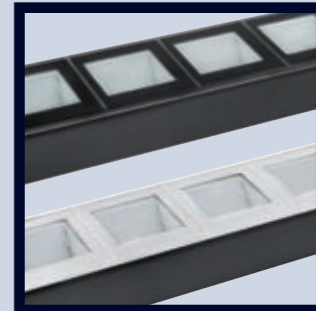
Modularity

The modularity of the lighting shells allows surfaces of any length and shape to be lit in an even, efficient manner.



LED technology

Thanks to the use of LED technology, Metrolight lets you create lighting systems without thinking about the product dimensions or light sources.



Design

Metrolight is made of glass and aluminium to fully express the quality and technological spirit that distinguish it. Available in versions with black or white serigraphed glass.



Installation flexibility

The devices allow you to create any configuration, without any limits of length, direction, or plays of light. Even after the product has been installed.



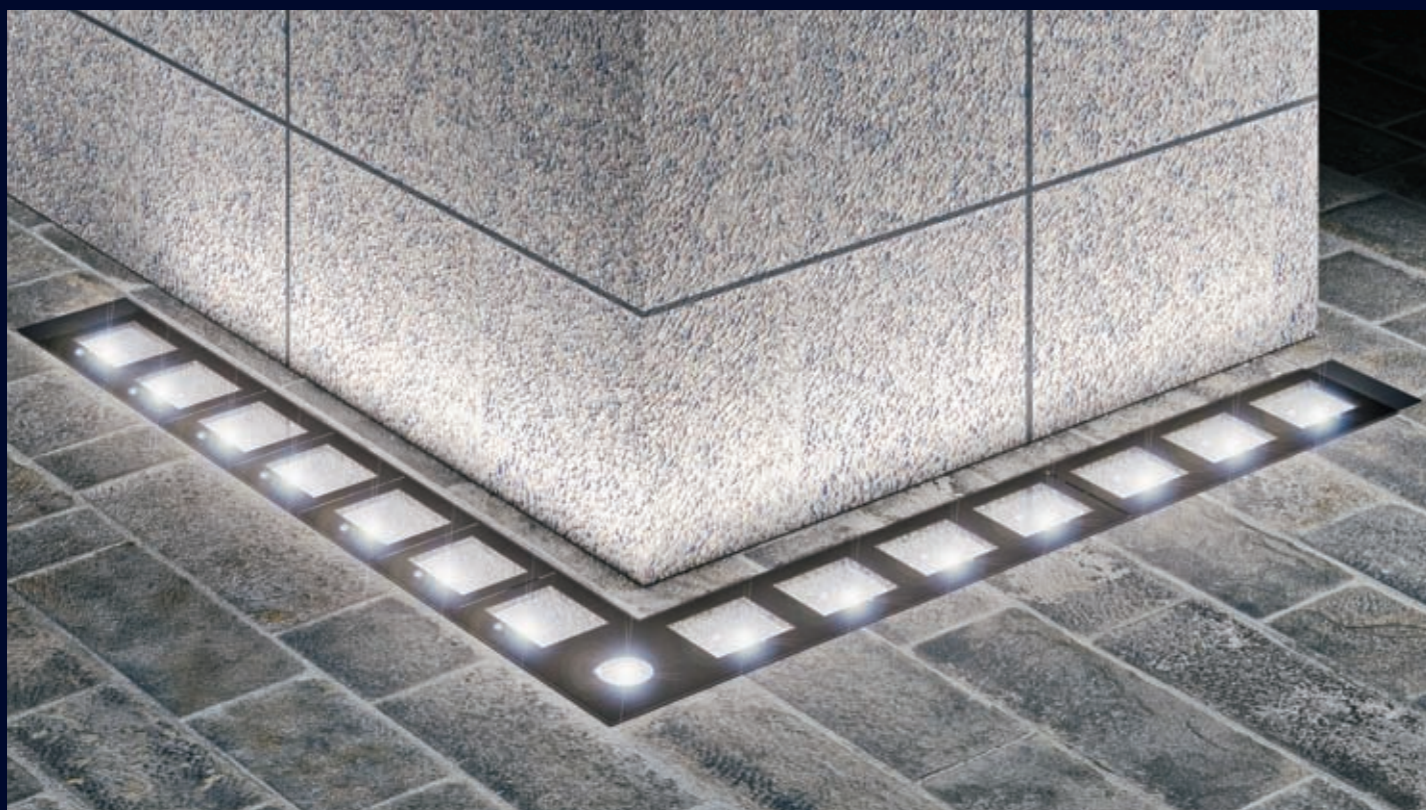
Easy to install

The lamp source, product design, connection system and outer casing all help to make installation extremely quick and easy.



Lighting engineering

Even between one module and another, the lighting will appear continuous and even, giving a homogeneous light effect regardless of the number of modules installed.

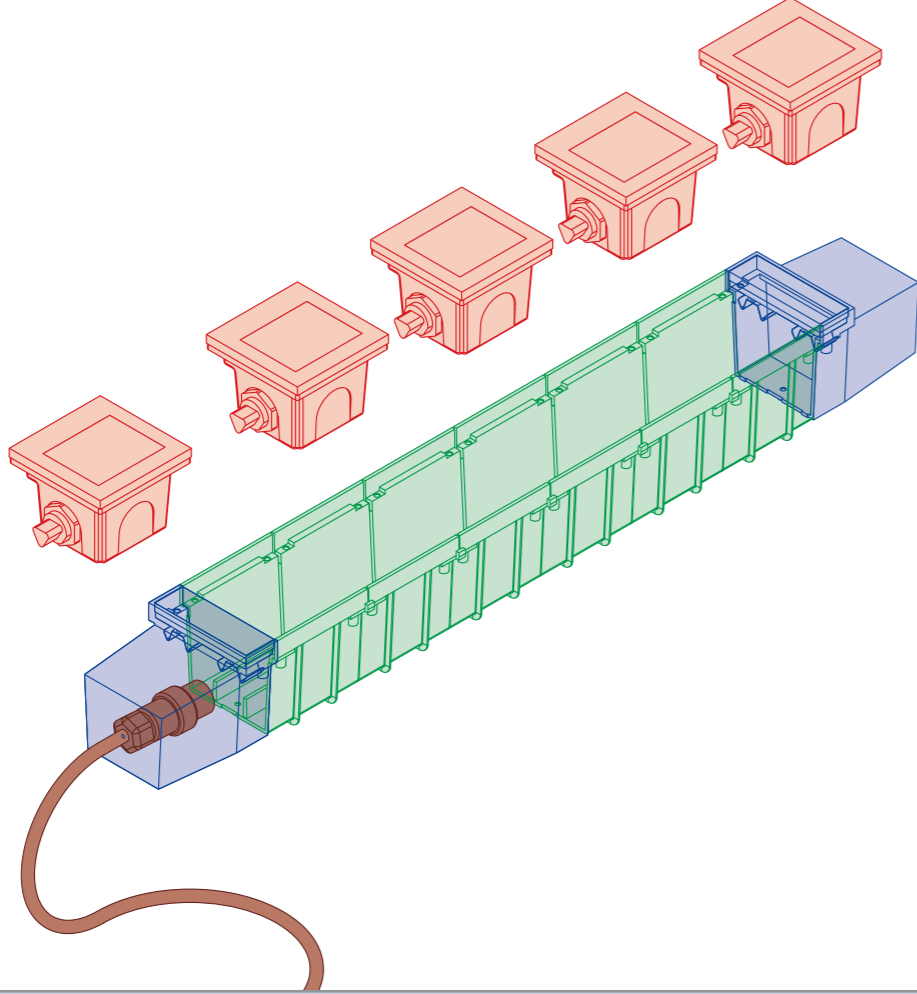


Possible configurations

Case 1 - Create a light beam with fewer than 6 LEDs *

ORDER:		
Flush-mounting module with single LED source	GW 82 861 #	X pieces (X≤5)
Linear outer casing	GW 82 891	1 piece
Outer casing cap	GW 82 893 #	2 pieces
Connector	GW 82 894 #	1 piece

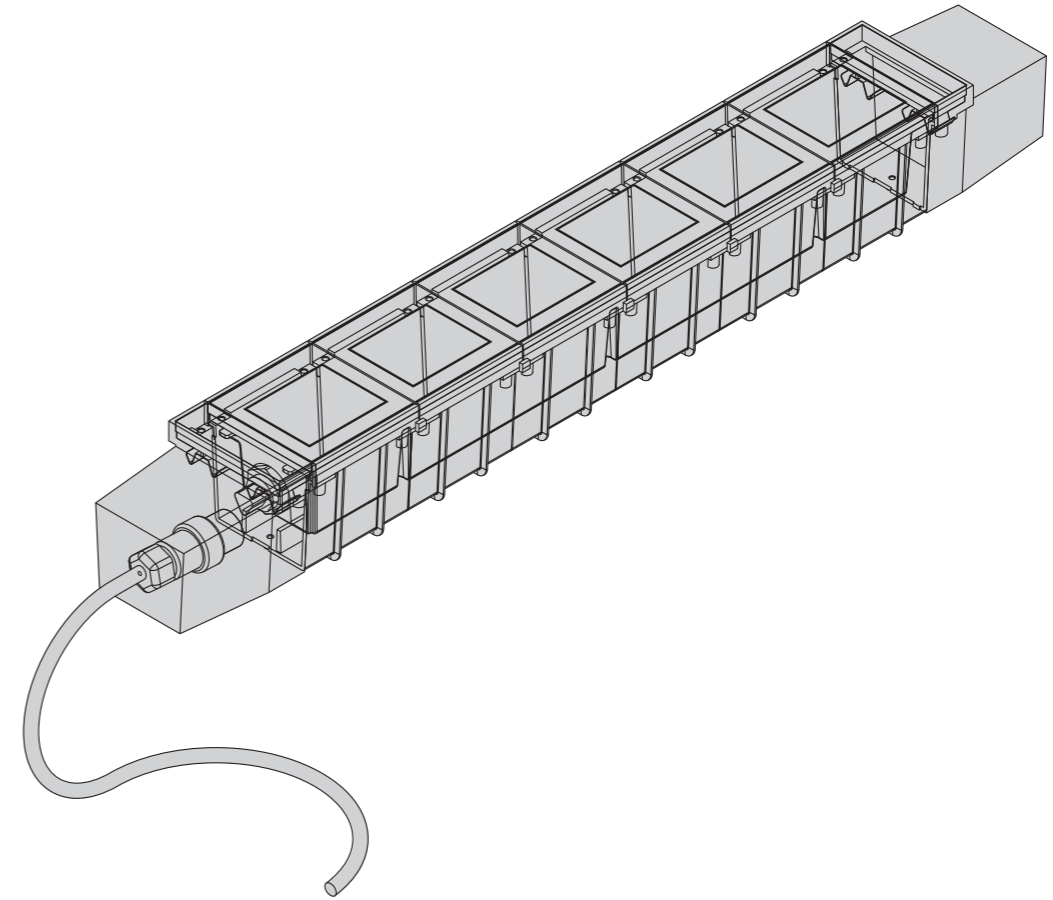
The total length of the outer casing is the sum of the two caps (225mm) plus the length of the pieces of outer casing (the same number of pieces as the number of modules installed) (X*97mm).



Case 2 - Create a light beam with 6 LEDs *

ORDER:	
Complete kit (6-LED module + outer casing + two outer casing caps + connector)	GW 82 860

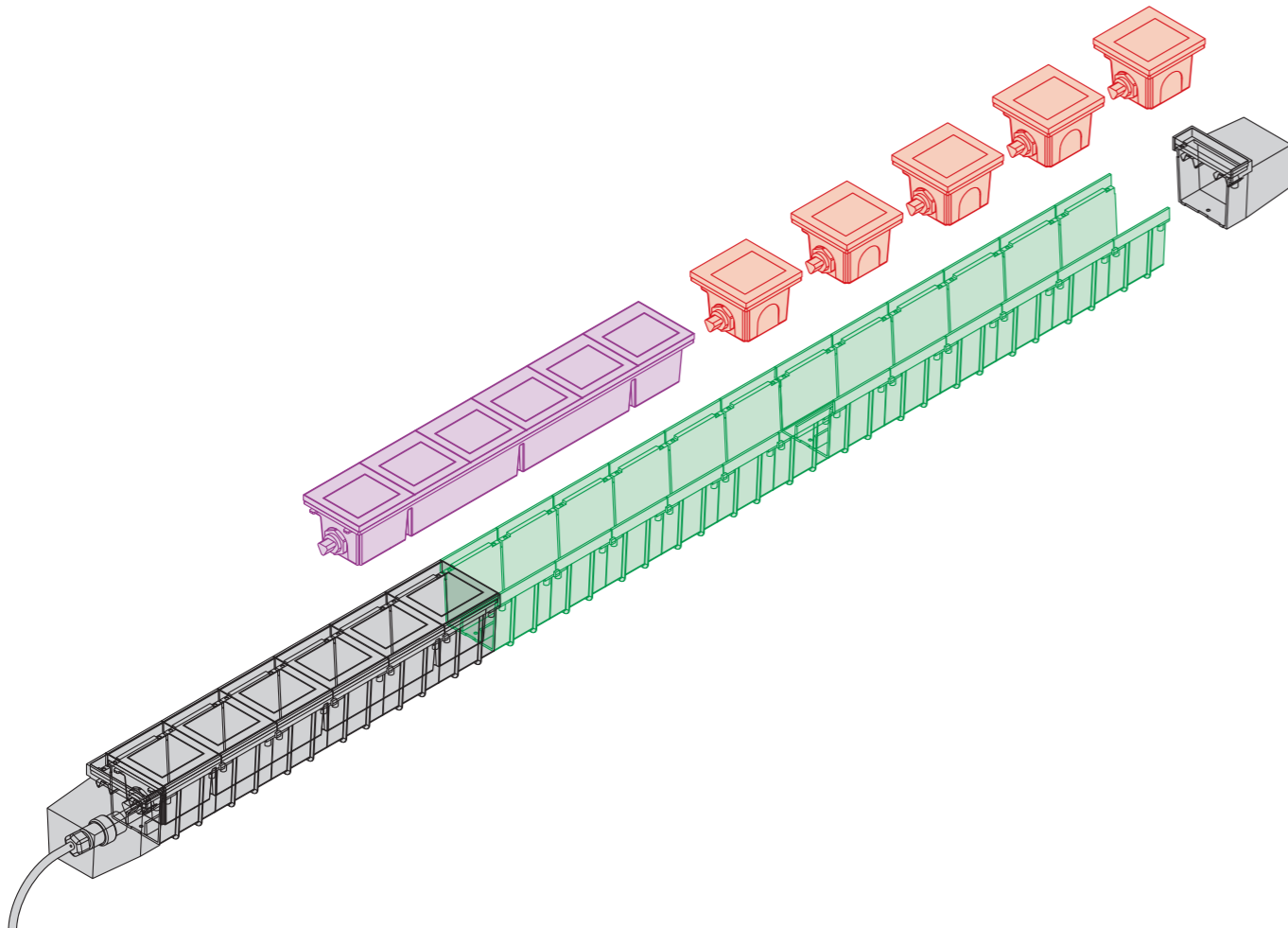
The total length of the outer casing is the sum of the two caps (225mm) plus the length of the entire outer casing (581mm).



Case 3 - Create a light beam with more than 6 LEDs *

ORDER:		
Complete kit (6-LED module + outer casing + two outer casing caps + connector)	GW 82 860	1 piece
Flush-mounting module with 6 LED sources	GW 82 862 #	X pieces
Linear outer casing	GW 82 891 #	(X+1) pieces
Flush-mounting module with single LED source	GW 82 861 #	Y pieces (Y≤5)

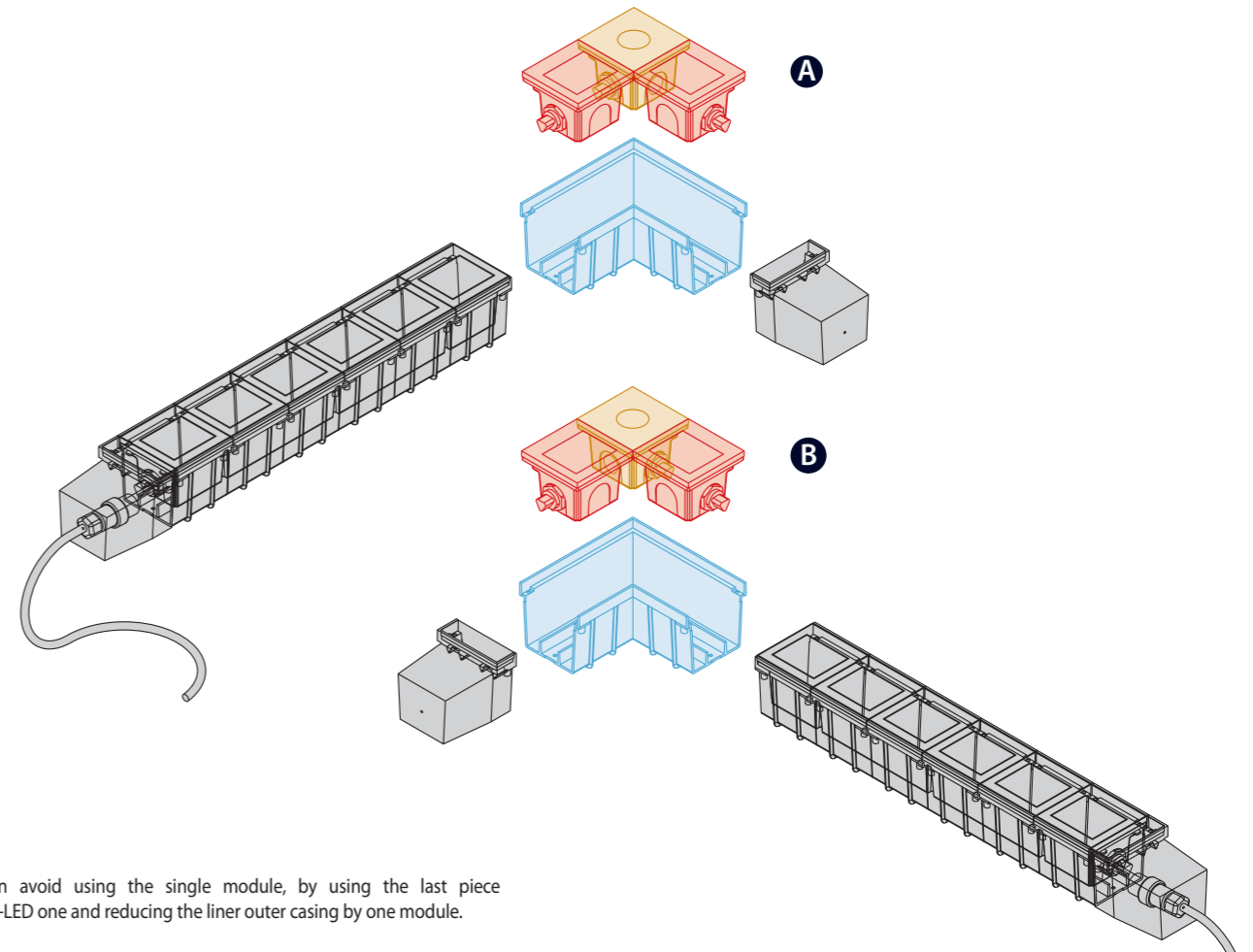
Remember that the flush-mounting length is always 225mm longer than the illuminated part, due to the presence of the head and tail caps.



Case 4 - Create light beams with at least one 90° angle *

ORDER:		
Complete kit (6-LED module + outer casing + two outer casing caps + connector)	GW 82 860	1 piece
Angular outer casing	GW 82 892	1 piece
Flush-mounting module with single LED source	GW 82 861	x2 pieces *
Right-hand corner of flush-mounting module with single LED source	GW 82 866	Right-hand corner (A)
Left-hand corner of flush-mounting module with single LED source	or GW 82 867	Left-hand corner (B)

Remember that the flush-mounting length is always 225mm longer than the illuminated part, due to the presence of the head and tail caps.



* You can avoid using the single module, by using the last piece of the 6-LED one and reducing the liner outer casing by one module.

* Version with white light and design finish with black serigraphed glass. For the other versions, refer to the code agreement table below.

Metrolight code agreement table

Description	Version with white light and design finish with black serigraphed glass	Version with white light and design finish with white serigraphed glass	Version with RGB light and design finish with black serigraphed glass	Version with RGB light and design finish with white serigraphed glass
Complete kit (6-LED module + outer casing + two outer casing caps + connector)	GW 82 860	GW 82 160	GW 82 880	GW 82 180
Flush-mounting module with single LED source	GW 82 861	GW 82 161	GW 82 871	GW 82 171
Flush-mounting module with 6 LED sources *	GW 82 862	GW 82 162	GW 82 872	GW 82 172
Right-hand corner of flush-mounting module with single LED source	GW 82 866	GW 82 166	GW 82 876	GW 82 176
Left-hand corner of flush-mounting module with single LED source	GW 82 867	GW 82 167	GW 82 877	GW 82 177
Outer casing cap	GW 82 893	GW 82 899	GW 82 893	GW 82 899
Linear outer casing	GW 82 891	GW 82 891	GW 82 891	GW 82 891
Angular outer casing	GW 82 892	GW 82 892	GW 82 892	GW 82 892
Connector	GW 82 894	GW 82 894	GW 82 895	GW 82 895
COMPLEMENTARY ITEMS				
RGB control module			GW 85 691	GW 85 691
DMX repeater / splitter			GW 85 692	GW 85 692
DMX address replicator			GW 82 191	GW 82 191

* For versions with 3 LED sources, contact Customer Service.