

**Portable power
analyzers in IP65
carrying case**




electric

ENERGY AND AUTOMATION



DMG M3 800...

Order code	Description	Qty per pkg	Wt
		n°	[kg]
DMG M3 800 01	DMG 800 portable unit in M3N housing, prewired, with USB integrated interface and carry handle	1	3.300
DMG M3 800 02	DMG 800 portable unit in M3N housing, prewired EXP10 04 and EXP10 30 expansion modules, USB integrated interface and carry handle	1	3.400
Cable kit for DMG M3 800... types			
DMG M3 KIT 01	Kit of cables with 3 current clamps 1000/1 ratio, and 4 alligator clip cables for voltage measurement	1	6.900



DMG M3 KIT



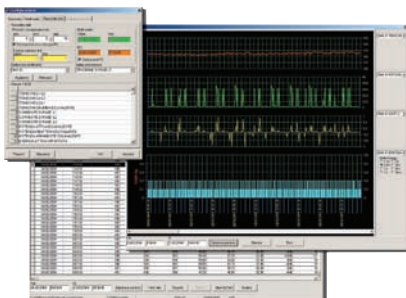
Expansion modules and accessories

Order code	Description	Qty per pkg	Wt
		n°	[kg]
EXPANSION MODULES. Inputs and outputs.			
EXP10 00	4 digital opto-isolated inputs	1	0.060
EXP10 01	4 static opto-isolated outputs	1	0.054
EXP10 02	2 digital inputs and 2 static outputs, opto-isolated	1	0.058
EXP10 03	2 relay outputs rated 5A 250VAC	1	0.050
EXP10 04	2 analog opto-isolated inputs 0/4-20mA or PT100 or 0-10V or 0...±5V	1	0.056
EXP10 05	2 analog opto-isolated outputs 0/4-20mA or 0-10V or 0...±5V	1	0.064
Communication ports.			
EXP10 10	Opto-isolated USB interface	1	0.060
EXP10 11	Opto-isolated RS232 interface	1	0.040
EXP10 12	Opto-isolated RS485 interface	1	0.050
EXP10 13	Opto-isolated Ethernet interface with webserver function	1	0.060
EXP10 14	Opto-isolated Profibus-DP interf.	1	0.08
EXP10 30	Data storage, clock-calendar (RTC) with backup battery for data logging	1	0.050
SOFTWARE.			
DMK SW	Remote control software for PC ↔ DMG 800 having Modbus®-RTU and ASCII protocols, complete with 51 C4 connecting cable	1	0.246
DMK SW 10	Data-logger software complete with 51 C2 connecting cable. Remote control and supervision software for PC ↔ DMG 800 having Modbus®-RTU and ASCII protocols, complete with 51 C4 connecting cable	1	0.400



EXP 10...

Example of remote control software DMK SW and DMK SW 10 viewing



General characteristics

The DMG 800 digital multimeter is capable of viewing the measurements with high accuracy on the wide graphic LCD, which allow to control energy distribution systems. It is mounted and wired in a carrying case M3N, 220x280mm (8.7x11in) size, complete with handle, fuse holders, fuses, USB interface port, connectors for power supply and current clamps and indicated expansion modules EXP..., for mobile controls and measurements. The main features of the power analyzer include an extended power supply voltage range, high measurement accuracy, expandability and graphic interactive interface for simple use.

Main measurements and functions include:

- Voltage: phase, line and system values
- Current: phase values (neutral current calculated)
- Power: apparent, active and reactive phase and total values
- P.F.: Power Factor per phase and total
- Frequency of measured voltage value
- HIGH-LOW-AVERAGE value functions for all measurements
- Maximum demand of power and current values
- Voltage and current asymmetry
- Total harmonic distortion (THD): voltage and current
- Harmonic analysis of voltage and current up to the 31° order
- Energy meters for active, reactive, apparent partial and total values with programmable tariff functions
- Hour counter for programmable total and partial hours
- Pulse counter for general use: pulse counting for water, gas, etc. consumption with expansion module only.

Operational characteristics

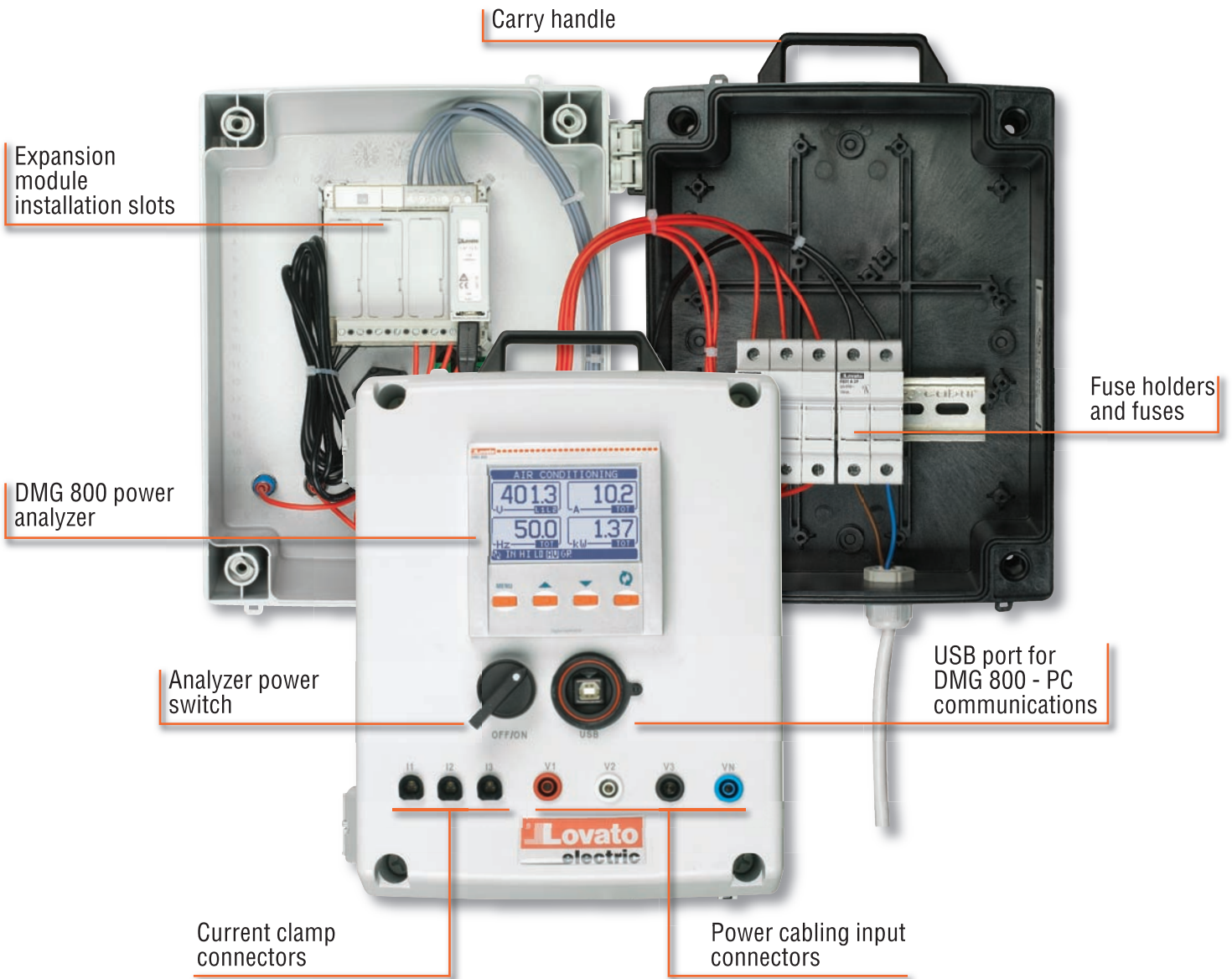
- Auxiliary supply voltage range: 90-484VAC / 93.5-300VDC
- Voltage measurement range: 20-830VAC phase-to-phase 10-480VAC phase-neutral
- Use in medium and high-voltage systems with voltage transformers
- Rated input current: by external CT 5A or 1A up to 10,000A
- Frequency measurement range: 45-66Hz
- True RMS measurements; for voltage and current
- Accuracy:
 - Voltage: ±0.2% (50-830VAC)
 - Current: ±0.2% (0.1-1.1 In)
 - Power: ±0.5% f.s.
 - Power factor: ±0.5%
 - Frequency: 0.05%
 - Active energy: Class 0.5S (IEC/EN 62053-22)
 - Reactive energy: Class 2 (IEC/EN 62053-23)
- Non-volatile memory for data storage
- Communication protocol Modbus®-RTU, ASCII and TCP with communication expansion modules only
- Programming and remote control by software with communication expansion modules only
- IEC protection degree: IP65.

Electrical safety (IEC/EN 61010-1 and IEC/EN 61010-2-032)

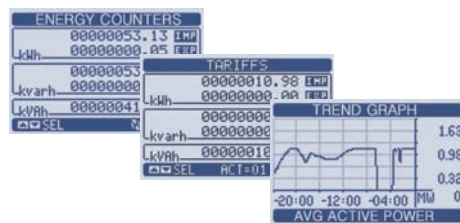
- CURRENT CLAMPS
- 600V category III
 - 300V category IV.
- POWER CABLES
- 1000V category III.

Certifications and compliance

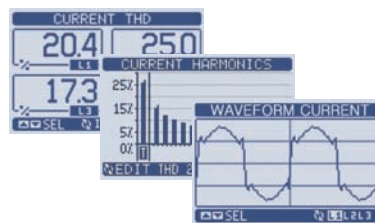
Certifications obtained (not DMG M3...): UL Listed, for USA and Canada (File E93601), as Auxiliary devices for multimeters and Listed Accessories for expansion modules only. Compliant with standards: IEC/EN 61010-1, IEC/EN 61000-6-2, IEC/EN 61000-6-4, UL508, CSA C22-2 n° 14.



Energy consumption control



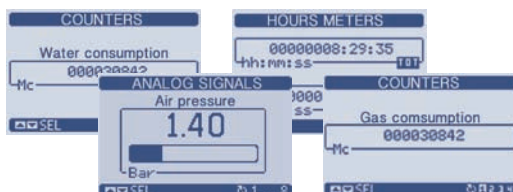
Grid quality verification



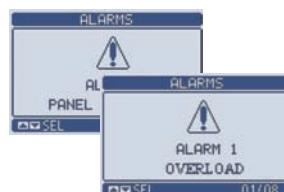
Boolean logic



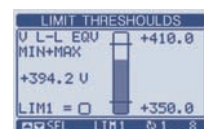
Data acquisition of environmental conditions



Alarms



Diagnostics and control



The products described in this publication are subject to be revised or improved at any moment. Catalogue descriptions and details, such as technical and operational data, drawings, diagrams and instructions, etc., do not have any contractual value. In addition, products should be installed and used by qualified personnel and in compliance with the regulations in force for electrical systems in order to avoid damages and safety hazards.



Present in over 100 countries

www.LovatoElectric.com

LOVATO ELECTRIC S.P.A.

VIA DON E. MAZZA, 12 - 24020 GORLE (BERGAMO) ITALY

Tel. +39 035 4282111 Fax +39 035 4282200

E-mail: info@LovatoElectric.com

Sales department: Tel. +39 035 4282354 - Fax +39 035 4282400

LOVATO Electric offices in the world

United Kingdom

LOVATO ELECTRIC LTD
Tel. +44 8458 110023
www.Lovato.co.uk

Czech Republic

LOVATO ELECTRIC S.R.O.
Tel. +420 226 203203
www.LovatoElectric.cz

Germany

LOVATO ELECTRIC GmbH
Tel. +49 7243 7669370
www.LovatoElectric.de

USA

LOVATO ELECTRIC INC
Tel. +1 757 5454700
www.LovatoUsa.com

Spain

LOVATO ELECTRIC S.L.U.
Tel. +34 93 7812016
www.LovatoElectric.es

Canada

LOVATO ELECTRIC CORP.
Tel. +1 450 6819200
www.Lovato.ca

Poland

LOVATO ELECTRIC SP. Z O.O.
Tel. +48 71 7979010
www.LovatoElectric.pl

United Arab Emirates

LOVATO ELECTRIC ME FZE
Tel. +971 50 8833 247
www.LovatoElectric.ae



ENERGY AND AUTOMATION