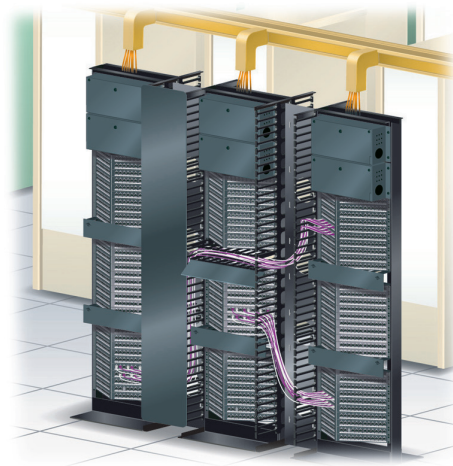


Today's networking technology demands increasingly cable dense applications, whilst still retaining the ability to access and manage cables efficiently & effectively. The Vertical Cable Rack Manager (VRM) has been specifically designed for high density cable applications such as Data Centres or Server rooms.

Used in conjunction with the Molex 42U, 19 inch Open Bay Rack, the VRM provides a robust and efficient way of managing cables and patch cords. It's ergonomic design ensures the necessary support for bundled patch cords, moving them from panels to the frame, maintaining bend radii at all times. Cable routing is flexible, and rapid re-routing can be achieved via the Quick Fit cable spools. Quick snap finger grooves enable flexible equipment management, and allow for expansion from 1U to whatever size required.



## Vertical Cable Rack Manager >

### What we do

For over 30 years Molex has manufactured innovative data transport and advanced management solutions.

Bringing Advanced Physical Layer Lifecycle Management to Enterprises Worldwide

### Highlights of the Vertical Cable Rack Manager solution

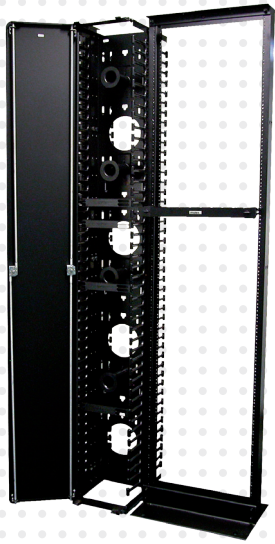
- Designed for use with any EIA standard 19" Open Bay Rack
- Allows for the upgrading of existing installations while maintaining current investment in hardware
- Maximizes space utilisation by increasing density and freeing up valuable floor space
- Robust but lightweight construction holds cables perfectly aligned against each individual patch panel maintaining critical bend radii. Smooth edges prevents cable snares and cuts
- A quick lock door provides easy access by allowing instantaneous left or right door opening with flush mounted handles

### Reasons for Installing Good Vertical Cable Management

The utilisation of effective cable management in the communications room provides a number of benefits:

- » **Improved Plant Longevity**  
Enables high density installations, maximizing available floor space  
Improves cable flow, increasing the life cycle of the cabling infrastructure by minimizing component wear and tear  
Its modular design allows the rack to be continually upgraded and modified to meet changing infrastructure needs
- » **Improved System Performance**  
Protects cable and patch-cords from being pinched, crushed or strained  
Reduces stress on connections preventing wear and tear that creates loose connections and network outages  
Minimizes performance drop in signal quality and network speed by supporting cable bundles and maintaining them at correct bend radii
- » **Improved System Management**  
Ease of Maintenance  
Clear cable pathway definition simplifies Moves, Adds and Changes (MACs)  
Greater Cable traceability, assisting problem resolution and relaying of cables  
Encourages good practices by providing all the tools to maintain an organized system, facilitating better resource utilization





## Ordering Information

### Vertical Cable Rack Management Solution

Order No.	SAP No.	Description
CMA-00083	181050000	12" Vertical Rack Cable Manager - Front/Back & Front Door
CMA-00084	181050001	8" Vertical Rack Cable Manager - Front/Back & Front Door
CMA-00085	181050006	1U Horizontal Cable Manager
CMA-00087	181050008	2U Horizontal Cable Manager
CMA-00088	181050012	12" Vertical Cable Retainer - 5 Pack
CMA-00089	181050013	Spools - 2 Pack
CMA-00090	181050014	Finger Guides - 5 Pack
CMA-00091	181050015	12" Door Kit
CMA-00092	181050016	8" Door Kit
CMA-00096	181050017	8" Vertical Cable Retainer - 5 Pack

### Open Bay Frames

Order No.	SAP No.	Description
RAA-00002	180310026	Open Bay Rack

### High Density Panels

Order No.	SAP No.	Description
PID-00145	182040013	50 Port KATT IDC Voice Patch Panel, 1U
PID-00154	182080245	24 Port Angled PowerCat 5e Patch Panel, 568A/B, 1U
PID-00155	182080295	48 Port Angled PowerCat 5e Patch Panel, 568A/B, 2U
PID-00156G	182080297	24 Port Angled PowerCat 6 Patch Panel, 568A/B, 1U - Graphite
PID-00156B	182080298	24 Port Angled PowerCat 6 Patch Panel, 568A/B, 1U - Black
PID-00157	182080299	48 Port Angled PowerCat 6 Patch Panel, 568A/B, 2U - Graphite
PID-00157B	182080300	48 Port Angled PowerCat 6 Patch Panel, 568A/B, 2U - Black

#### Americas

Corporate Headquarters  
+1 630 969 4550

#### Asia Pacific

Australia  
+61 3 9971 7111  
China  
+86 21 5048 0889  
India  
+91 80 4129 3500

#### EMEA

United Kingdom  
+44 (0)2392 205 800  
Czech Republic  
+420 222 191 418  
Poland  
+48 22 333 81 50  
Russia  
+7 495 642 64 55  
Ukraine  
+38 (044) 494 2642  
Middle East  
+971 4 299 0430  
South Africa  
+27 11 513 4223

