



ModLink™ plug & play copper solution

What we do

For over 30 years Molex has manufactured comprehensive copper and optical fiber data transport solutions for the transmission of voice, data and imaging signals

Peace of mind

The ModLink solution is covered by a Global 25 Year Product, System Performance and Application Assurance Warranty

Commercial Standards:

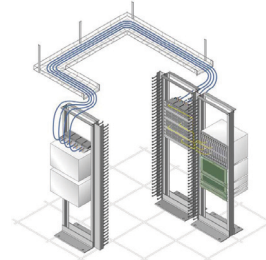
TIA/EIA-568-B.2-2001
FCC Subpart F 68.5
IEC-603-7



ModLink™ - Plug & Play Copper Solution

Factory terminated Plug and Play solutions offer enterprises a number of advantages over traditional cabling systems. Deployment is faster, performance is guaranteed, and the need for on-site testing is minimized. Plug and play solutions are ideal for installations where quality and speed of implementation are paramount, and are ideal for high density environments such as Data Centers, Storage Area Networks (SAN's) and Server rooms.

The ModLink Plug and Play Copper solution from Molex is a high quality modular plug and play solution that enables smooth, trouble-free implementations – whatever the application.



Highlights of the ModLink Plug and Play Solution

- Fast and Easy Deployment — installations times can be reduced by as much as 80%
- Quick Installation — factory terminated and tested plug & play solution
- Optimum Reliability — more consistent network connections than those terminated on-site
- High Density Utilization — up to 48 ports in a 1U density patch panel
- Compact iPass Connector — provides reliable 10/100/1000BASE-T performance
- Multipair cable construction — reduces cable volume and assists cooling & airflow in high density applications
- 100% factory tested — minimizes the need for on-site testing

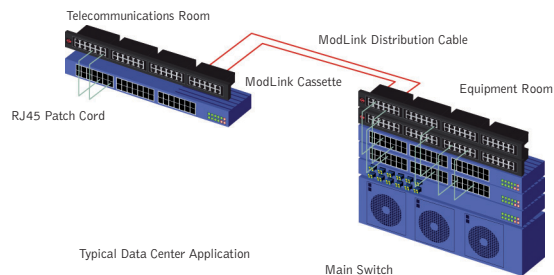
The Technology

The ModLink solution utilizes the patented Molex iPass connector. The iPass connector is a low profile slim line I/O connector designed specifically for high density applications. The connector is made from die-cast zinc alloy and has a narrow latch-pull design that enables swift and positive connect or disconnect. The connector accommodates a 24 pair cable and the overall cable diameter is significantly less than that of the multiple RJ45 cables used in traditional systems; this assists with airflow and cooling in cable dense applications. The connector provides consistent and reliable performance up to Gigabit Ethernet speeds.

ModLink Panels and Cassettes

The ModLink patch panels are modular in design and accept up to 4 ModLink cassettes. Panels feature integral rear cable management, and are available in 1U 24 port or 1U 48 port versions.

ModLink cassettes slide easily in & out of the panels, allowing speedy installation. The simple design of the cassette allows for fast upgrades or expansion of systems with minimum installation time. The cassettes are available in 2 configurations – 6 port (1 row X 6 RJ45 Ports) or 12 port (2 rows X RJ45 ports) Both cassettes fit into the 1U ModLink panels. All cassettes are 100% factory tested.



Cable Assemblies

ModLink Cable assemblies are available in 2 styles

Distribution cables – used as the interconnection cable between cassettes – are made as iPass to iPass cable assemblies. These are available in both standard and custom lengths as required. These cables are available in a number of cable construction types to suit specific regional requirements. All assemblies are 100% factory tested.

Hydra cable assemblies – comprise an iPass connector to 6 RJ45 plugs. This assembly is used for panel to panel or switch to panel links. These assemblies are available in a variety of lengths and have a PVC cable sheath. All assemblies are 100% factory tested.

Ordering Information

Patch Panels

Order No.	SAP No.	Description
CMP-00007	0183170006	48 Port ModLink Copper Panel, 1U with all cassettes loaded
CMP-00008	0183170007	24 Port ModLink Copper Panel, 1U with all cassettes loaded
CMP-00009	0183170008	ModLink Copper 6 Port Cassette
CMP-00010	0183170009	ModLink Copper 12 Port Cassette
CMP-00005	0183170004	1U Rack Mount Enclosure with Cable Management

Distribution Cables (iPass to iPass Cable Assemblies)

Order No.	SAP No.	Description
ICA-00126-08	0183030125	iPass 24 pair Gigabit UTP CMP 25M - gray
ICA-00127-08	0183030126	iPass 24 pair Gigabit UTP CMR 25M - gray
ICA-00128-08	0183030127	iPass 24 pair Gigabit UTP CMP 30M - gray
ICA-00129-08	0183030128	iPass 24 pair Gigabit UTP CMR 30M - gray
ICA-00130-08	0183030129	iPass 24 pair Gigabit UTP CMP 35M - gray
ICA-00131-08	0183030130	iPass 24 pair Gigabit UTP CMR 35M - gray
ICA-00132-08	0183030131	iPass 24 pair Gigabit UTP CMP 40M - gray
ICA-00133-08	0183030132	iPass 24 pair Gigabit UTP CMR 40M - gray
ICA-00134-08	0183030133	iPass 24 pair Gigabit UTP CMP 45M - gray
ICA-00135-08	0183030134	iPass 24 pair Gigabit UTP CMR 45M - gray
ICA-00136-08	0183030135	iPass 24 pair Gigabit UTP CMP 50M - gray
ICA-00137-08	0183030136	iPass 24 pair Gigabit UTP CMR 50M - gray
ICA-00138-08	0183030137	iPass 24 pair Gigabit UTP LSOH 25M - gray
ICA-00139-08	0183030138	iPass 24 pair Gigabit UTP LSOH 30M - gray
ICA-00140-08	0183030139	iPass 24 pair Gigabit UTP LSOH 35M - gray
ICA-00141-08	0183030140	iPass 24 pair Gigabit UTP LSOH 40M - gray
ICA-00142-08	0183030141	iPass 24 pair Gigabit UTP LSOH 45M - gray
ICA-00143-08	0183030142	iPass 24 pair Gigabit UTP LSOH 50M - gray

Custom lengths available upon request. Please contact your local sales office early for more information and to assist in developing a plan to suit your needs.

Hydra Cable Assemblies (iPass to 6 x RJ45 Plugs)

Order No.	SAP No.	Description
ICA-00150-08	0183030150	iPass RJ45 Cable Assembly, 6 port PVC, 1M - gray
ICA-00151-08	0183030151	iPass RJ45 Cable Assembly, 6 port PVC, 2M - gray
ICA-00152-08	0183030152	iPass RJ45 Cable Assembly, 6 port PVC, 3M - gray
ICA-00153-08	0183030153	iPass RJ45 Cable Assembly, 6 port PVC, 5M - gray
ICA-00154-08	0183030154	iPass RJ45 Cable Assembly, 6 port PVC, 7M - gray
ICA-00155-08	0183030155	iPass RJ45 Cable Assembly, 6 port PVC, 10M - gray

Custom lengths available upon request. Please contact your local sales office early for more information and to assist in developing a plan to suit your needs.



ModLink™ plug & play copper solution

Americas

Corporate Headquarters
+1 630 969 4550

Asia Pacific

Australia
+61 3 9971 7111
China
+86 21 5048 0889
India
+91 80 4129 3500

EMEA

United Kingdom
+44 (0)2392 205800
Czech Republic
+420 222 191 418
Poland
+48 22 333 81 50
Russia
+7 495 642 64 55
Ukraine
+38 (044) 494 2642
Middle East
+971 4 299 0430
South Africa
+27 11 807 2577

