

Short Documentation Online catalog



**Created for demonstration purpose
14th December 2007 - Markus Schlageter**

R&M Online Catalog

The complete R&M assortment is now also available in the internet. With a lot of additional information and a "plus" of functionality. For example you are able to create with a few "clicks" a complete and professional attachment for your quotations or a documentation about the selected products for your customers.

Visit: www.rdm.com/universe

Your Advantages

- 24 hours a day, 7 days a week available
- Access to the complete R&M assortment
- Wide range of information on product level
- Comfortable search functions
- Leading edge of functionality regarding documentation
- Create an inquiry out of the selected products
- Tell a friend function

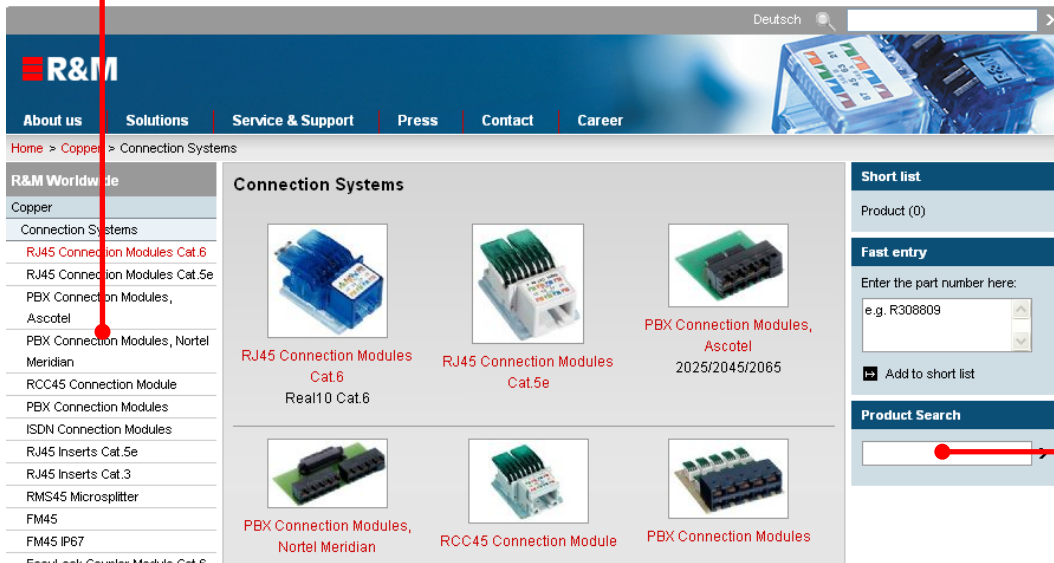
Enjoy surfing on our online catalog

Don't hesitate to contact me for further questions or a feedback to our solution

Markus Schlageter
Head of Marketing
R&M Headquarters
Email: markus.schlageter@rdm.com
Tel.: +41 44 933 8 301

Find a product ...

Menu with the same structure like the print catalog

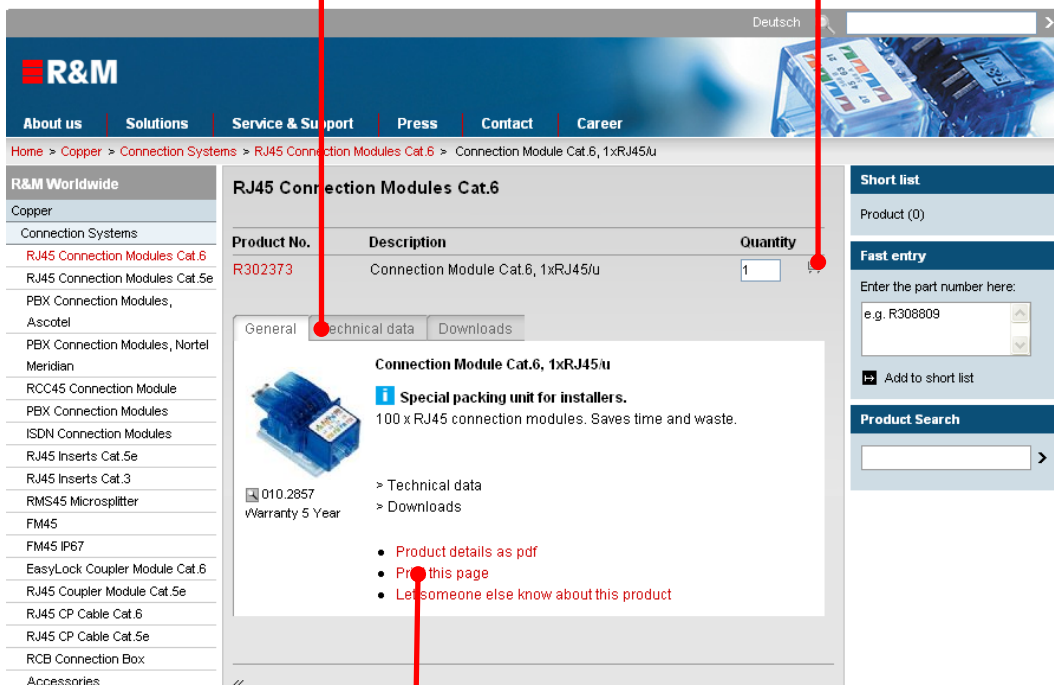


Search by R-number or product name

Product details

Find detailed information about the product by tabs

Collect your products in a short list



Use the information:
 as print
 as a pdf file
 Send a email to a friend with a link to the product

The downloads

Deutsch

R&M


About us | Solutions | Service & Support | Press | Contact | Career

Home > Copper > Connection Systems > RJ45 Connection Modules Cat.6 > Connection Module Cat.6, 1xRJ45/u

RJ45 Connection Modules Cat.6

Product No.	Description	Quantity
R302373	Connection Module Cat.6, 1xRJ45/u	1

General | Technical data | Downloads

 010.2857
Warranty 5 Year

Product details as pdf

- [Product details + technical data + Accessories / Moduls](#)

> General
> Technical data

- [Product details as pdf](#)
- [Print this page](#)
- [Let someone else know about this product](#)

Short list
Product (0)

Fast entry
Enter the part number here:
e.g. R308809
Add to short list

Product Search

Download directly:
Installation instructions
Data sheets
Certificates
Additional information

The shortlist

Fast entry of product numbers, also by copy paste from other applications like Excel

Create an inquiry and send it to R&M

Create a professional documentation

Inquiry

Customer number
Company *
Department
Title *
Last Name *
First name *
Street / No. *
ZIP code/City *
Country * Afghanistan
Telephone *
E-Mail *
Inquiry text

* Mandatory fields
 Please give me a call
 Please recommend a R&M installation partner

Your inquiry

Quantity	Product No.	Description
100	R302373	Connection Module Cat.6, 1xRJ45/u
5	R305117	19" 1U Patch Panel 24xRJ45/u, Cat.6, fully populated
50	R310788	FM Global Outlet 88x88, 2x1-Port, pure white
500	R312808	Installation Cable Real10 Cat.6, U/UTP, 4P, LSZH, 500 m
50	R302314	Patch Cord Cat.6, U/UTP, 4P, LSZH, RJ45/u, 5.0 m

Create documentation

Generate your individual documentation with the products in the short list as pdf-file. Either as detailed product information or as catalog excerpt. As an option you are able to add a title page.

Product information
 Catalog

General information
 Technical data
 Tender text
 Accessories

Cover sheet

Issue short list as catalog

Title: Documentation Project XY
Subtitle 1: Petersbank London
Subtitle 2: edited by Paul Partner

..with all technical data

..as a short form catalog

Example of a complete product information



**Created for demonstration purpose
14th December 2007 - Markus Schlageter**

**R304327 Connection Module Real10 Cat.6, 100xRJ45/s**

010.2859

**Warranty**

5 Year

Scope of Delivers

- RJ45 Real10 Cat.6 connection module, shielded
- Mounting plate
- EMC cover
- Dust cover
- Cable tie
- Installation instructions

Weight

16.150G

Technical Data

Standardisation	IEC 60603-7: Electrical Characteristics of the Telecommunication Outlets ISO/IEC 11801, Second Edition: September 2002 EN 50173-1: November 2002
Connector type (B)	RJ45
Number of connectors (A)	100
Category connector (A)	Real10 Cat.6
Shielding - connector (A)	Ja
Holder for connector / module	Support Plate
Material	PC UL-94-V0
Color	blue
Dispatch weight	16.150
Unit of dispatch weight	G

R925722 Mounting Plate 45x45, 1x1-Port, white

010.1272

**Warranty**

Acc. GBT

Description

– Plastic: ABS

Weight

15.640G

Technical Data

Assembly	empty
Material	plastic (ABS)
Color code RAL	9010
Color	white
Dimension	45x45mm
Dispatch weight	15.640
Unit of dispatch weight	G

R305887 19" 1U Patch Panel 16xRJ45/s, Real10 Cat.6, fully populated

010.2175

**Warranty**

5 Year

Scope of Delivers

- 19" 1U 16-port patch panel, empty, shielded
- 16 Real10 Cat.6 connection modules , RJ45/s incl. EMC covers and dust covers
- 19" mounting kit
- 3 jumpering brackets
- 4 labeling strips
- Cable ties
- Installation instructions

Weight

879.100G

Technical Data

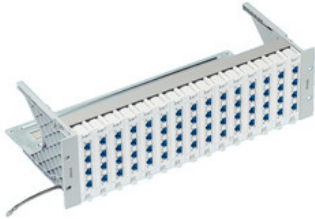
Rack mounting version	Rangierfeld
Connector type (B)	RJ45
Number of connectors (A)	16
Category connector (A)	Real10 Cat.6
Shielding - connector (A)	Ja
Holder for connector / module	Support Plate
Assembly	fully populated
Material	polyamide, fiber-glass reinforced
Color code NCS	2502-B
Color	medium gray
Dispatch weight	879.100
Unit of dispatch weight	G

Modules & Accessoires

R25107	Coding "A" for RJ45 Jack, anthracite
R25676	Coding "B" for RJ45 Jack, white
R304825	Plug Guard, green
R304826	Plug Guard, red
R304827	Plug Guard, white
R305685	Hinged Dust Cover, anthracite
R305686	Hinged Dust Cover, blue
R305687	Hinged Dust Cover, brown
R305688	Hinged Dust Cover, yellow
R305689	Hinged Dust Cover, gray
R305690	Hinged Dust Cover, green
R305691	Hinged Dust Cover, red
R305692	Hinged Dust Cover, violet
R305693	Hinged Dust Cover, white
R306039	Labeling Sheet to 16-Port Patch Panel
R306058	Splash Cap, blue
R306060	Splash Cap, yellow
R306061	Splash Cap, green
R306062	Splash Cap, red
R306063	Splash Cap, white
R306179	19" 1U Jumper Ring Panel, plastic
R306180	19" 2U Jumper Ring Panel, plastic
R306181	19" Lateral Radius Guard, left and right
R310835	Plug Reduction Frame RJ45 onto RJ11/RJ12

R302362 19" 3U Global Patch Panel 60xRJ45/s, Real10 Cat.6, fully populated

010.2052

**Warranty**

5 Year

Scope of Delivers

- 19" 3U Global patch panel/s incl. cable tie shelf
- 15 connection module holders Global/s
- Grounding system
- 60 Real10 Cat.6 connection modules, RJ45/s incl. EMC covers and dust covers
- Labeling strips
- 19" mounting kit
- Cable ties
- Installation instructions

Weight

3194.000G

Technical Data

Rack mounting version	Rangierfeld
Connector type (B)	RJ45
Category connector (A)	Real10 Cat.6
Shielding - connector (A)	Ja
Holder for connector / module	Module Holder
Assembly	fully populated
Material	polyamide, fiber-glass reinforced
Color code NCS	S 2502-B
Color	medium gray
Dispatch weight	3194.000
Unit of dispatch weight	G

Modules & Accessoires

R25107	Coding "A" for RJ45 Jack, anthracite
R25676	Coding "B" for RJ45 Jack, white
R304825	Plug Guard, green
R304826	Plug Guard, red
R304827	Plug Guard, white
R305685	Hinged Dust Cover, anthracite
R305686	Hinged Dust Cover, blue
R305687	Hinged Dust Cover, brown
R305688	Hinged Dust Cover, yellow
R305689	Hinged Dust Cover, gray
R305690	Hinged Dust Cover, green
R305691	Hinged Dust Cover, red
R305692	Hinged Dust Cover, violet
R305693	Hinged Dust Cover, white
R306058	Splash Cap, blue
R306060	Splash Cap, yellow
R306061	Splash Cap, green
R306062	Splash Cap, red
R306063	Splash Cap, white
R306179	19" 1U Jumper Ring Panel, plastic
R306180	19" 2U Jumper Ring Panel, plastic
R306181	19" Lateral Radius Guard, left and right
R30871	Labeling Sheet Fiberliner / Global Module Holder
R310835	Plug Reduction Frame RJ45 onto RJ11/RJ12
R316247	Global 3-Ring Cable Manager

R35115 19" 1U Patch Panel 50-Port, empty

020.0725.1

**Warranty**

5 Year

Description

– With a holding capacity of 5 connection modules 10xRJ45/u

Scope of Delivers

- 19" 1U (84HP) patch panel, powder-coated, gray
- 19" mounting kit
- 10 labeling strips
- Instruction manual

Weight

1612.000G

Technical Data

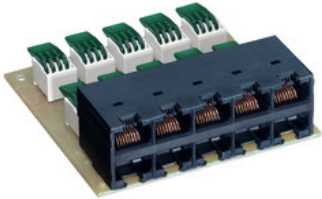
Rack mounting version	Baugruppenträger
Assembly	empty
Color	light gray
Dispatch weight	1612.000
Unit of dispatch weight	G

Modules & Accessoires

R301388	Connection Module 10xRJ45/u (4-5, 7-8)
R302182	Connection Module ISDN 10xRJ45/u
R35116	Connection Module 10xRJ45/u (4-5, 3-6)
R35117	Blind Cover 1x10-Port, light gray
R35118	19" 1U Mounting Support, Voice Panel
R35119	Labeling Sheet Voice Panel
R35122	Concentrator Module IN 8xRJ45/u, OUT 2xRJ45/u

R35116 Connection Module 10xRJ45/u (4-5, 3-6)

020.0717

**Warranty**

5 Year

Description

- Connection module with 10 unshielded RJ45 ports
- Tool-free "Easy Lock" termination technique

Information

Wiring chart see specifications RJ45 voice connection modules

Weight

80.000G

Technical Data

Connector type (B)	RJ45
Number of connectors (A)	10
Category connector (A)	Cat.3
Shielding - connector (A)	Nein
Wiring diagram	(4-5, 3-6)
Dispatch weight	80.000
Unit of dispatch weight	G

R306179 19" 1U Jumper Ring Panel, plastic

090.2325

**Warranty**

5 Year

Description

- Plastic plate with four mounted jumpering brackets
- For a neat, horizontal routing of patch cords between patching fields
- The reinforced plastic plate and snap-in jumpering brackets provide additional stability and a quick mounting

Scope of Delivers

- 1U jumper ring panel
- 4 jumpering brackets, gray
- 19" mounting kit

Weight

205.900G

Technical Data

Rack mounting version	Kabelführungsplatte
Material	PC
Color code NCS	S 2502-B
Color	medium gray
Dispatch weight	205.900
Unit of dispatch weight	G

R306180 19" 2U Jumper Ring Panel, plastic

090.2324

**Warranty**

5 Year

Description

- Plastic plate with eight mounted jumpering brackets
- For a neat, horizontal routing of patch cords between patching fields
- The reinforced plastic plate and snap-in jumpering brackets provide additional stability and a quick mounting

Scope of Delivers

- 2U jumper ring panel
- 8 jumpering brackets, gray
- 19" mounting kit

Weight

339.400G

Technical Data

Rack mounting version	Kabelführungsplatte
Material	PC
Color code NCS	2502-B
Color	medium gray
Dispatch weight	339.400
Unit of dispatch weight	G

R302334 Patch Cord Real10 Cat.6, S/FTP, 4P, LSFRZH, RJ45/s-RJ45/s, 2.0 m

010.2076

**Warranty**

5 Year

Description

- Cable identification: S/FTP
- Outer jacket: LSFRZH
- Conductor diameter copper strand: AWG26/7
- Screened in pairs: AL/foil
- Overall screen: copper braid
- Outer diameter: 6 mm

Weight

94.590G

Technical Data

Standardisation	Compliant with Cat.6, Class E (250 MHz) requirements: ISO/IEC 11801 2nd Edition Compliant with Cat.6 component standards IEC 60603-7-4 and 60603-7-5
Connector type (B)	RJ45
Category connector (A)	Real10 Cat.6
Shielding - connector (A)	Ja
Connector type (A)	RJ45
Category connector (B)	Real10 Cat.6
Shielding - connector (B)	Ja
Category	Real10 Cat.6
Cable class	Patch Cord
Cable shield	S/FTP
Number of fibers / conductors	8
Stranding	4P
Cable overall diameter	6.0mm
Tube / Wire type	Litzenader
Fiber- / Conductor diameter	1.02
Length (meter)	2.0
Cable jacket material	LSFROH
Cable jacket characteristics	cable, metal-free
Cable jacket characteristics	zero-halogen
Cable jacket characteristics	flame-retardant
Color code RAL	7032
Color	gray
Dispatch weight	94.590
Unit of dispatch weight	G

Modules & Accessoires




R25432	Coding "A" for RJ45 connectors, anthracite
R25677	Coding "B" for RJ45 Connectors, white
R302342	Color Coding, anthracite
R302343	Color Coding, blue
R302344	Color Coding, brown
R302345	Color Coding, yellow
R302347	Color Coding, gray
R302348	Color Coding, green
R302349	Color Coding, red
R302420	Color Coding, violet
R304807	Safe Clip
R306064	Splash Sleeve, transparent
R313814	Patch Guard RJ45
R317093	Easy Latch, violet
R317094	Easy Latch, blue
R317095	Easy Latch, brown
R317096	Easy Latch, yellow
R317097	Easy Latch, gray
R317098	Easy Latch, green
R317099	Easy Latch, red
R317100	Easy Latch, anthracite

Example for a short form catalog



**Created for demonstration purpose
14th December 2007 - Markus Schlageter**

	Part number	Description
	R304327	Connection Module Real10 Cat.6, 100xRJ45/s
	R925722	Mounting Plate 45x45, 1x1-Port, white Description: – Plastic: ABS
	R305887	19" 1U Patch Panel 16xRJ45/s, Real10 Cat.6, fully populated
	R302362	19" 3U Global Patch Panel 60xRJ45/s, Real10 Cat.6, fully populated
	R35115	19" 1U Patch Panel 50-Port, empty Description: – With a holding capacity of 5 connection modules 10xRJ45/u
	R35116	Connection Module 10xRJ45/u (4-5, 3-6) Description: – Connection module with 10 unshielded RJ45 ports – Tool-free "Easy Lock" termination technique

	Part number	Description
	R306179	19" 1U Jumper Ring Panel, plastic Description: <ul style="list-style-type: none">– Plastic plate with four mounted jumpering brackets– For a neat, horizontal routing of patch cords between patching fields– The reinforced plastic plate and snap-in jumpering brackets provide additional stability and a quick mounting
	R306180	19" 2U Jumper Ring Panel, plastic Description: <ul style="list-style-type: none">– Plastic plate with eight mounted jumpering brackets– For a neat, horizontal routing of patch cords between patching fields– The reinforced plastic plate and snap-in jumpering brackets provide additional stability and a quick mounting
	R302334	Patch Cord Real10 Cat.6, S/FTP, 4P, LSFRZH, RJ45/s-RJ45/s, 2.0 m Description: <ul style="list-style-type: none">– Cable identification: S/FTP– Outer jacket: LSFRZH– Conductor diameter copper strand: AWG26/7– Screened in pairs: AL/foil– Overall screen: copper braid– Outer diameter: 6 mm