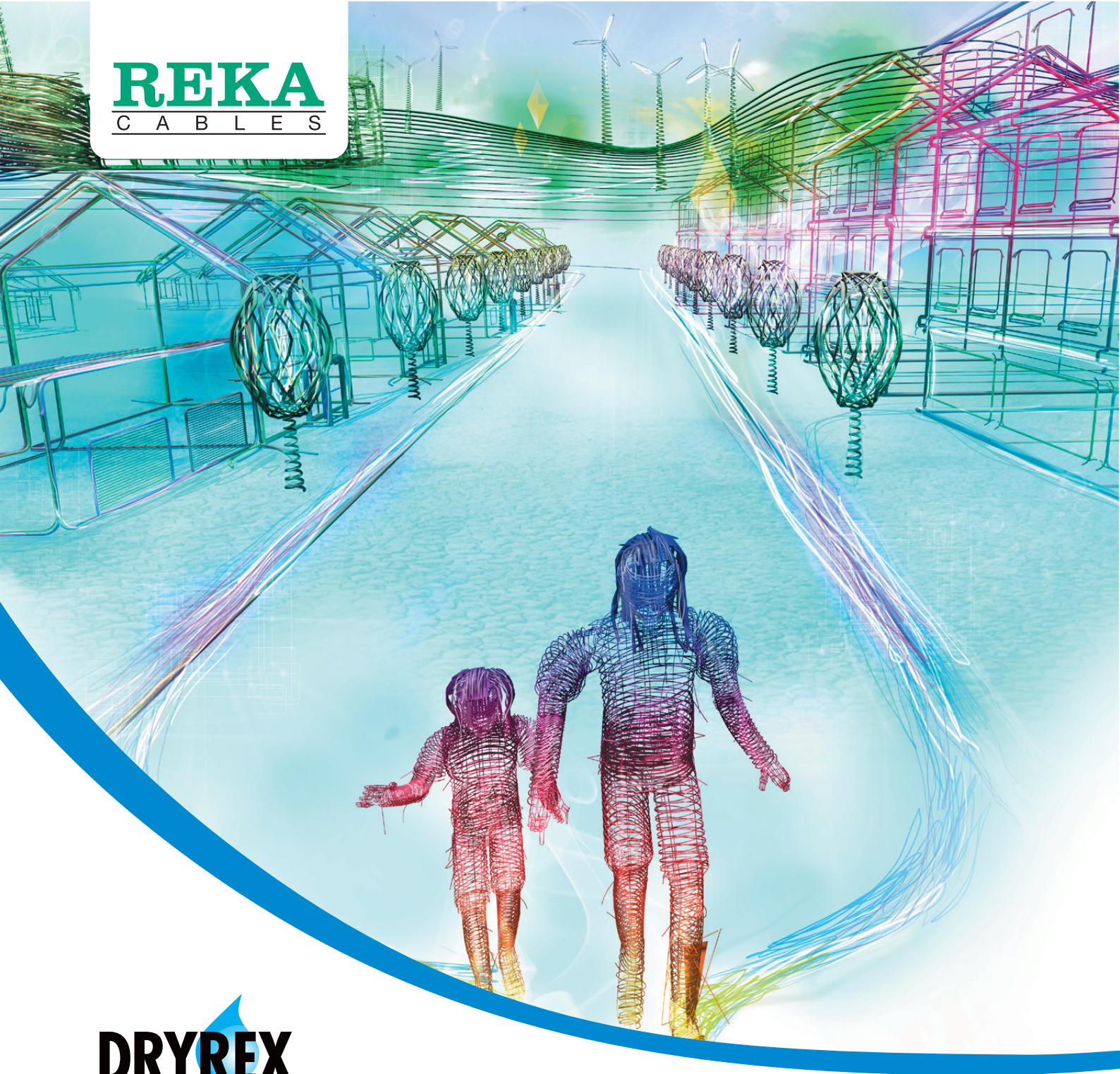


REKA
C A B L E S



DRYREX

High-Quality Medium Voltage Cables

50
1961-2011

AXLJ-F TT

CENELEC HD 620 S2:2010 Part 10 Section M

| | |
|-------------------------------------|---|
| Conductor: | Watertight round stranded and compacted aluminium conductor (EN 60228 class 2). |
| Conductor screen: | Semiconducting compound. |
| Insulation: | Extruded cross-linked polyethylene (XLPE). |
| Insulation screen: | Semiconducting compound. |
| Longitudinal watertightness: | Three insulated conductors are laid up together with waterswellable fillers and semiconducting waterswellable tapes. |
| Metallic screen: | Helically applied copper wires with a copper tape counter helix. |
| Radial watertightness: | Polyester laminated aluminium foil wrapped around the metallic screen and bonded to the sheath. |
| Sheath: | Black PE sheath. |
| Applications: | Cable is intended for fixed installations indoors and outdoors, on cable ladders, in conduits and cable ducts. Cable may also be buried in soil. Cable is both longitudinally and radially watertight and therefore suitable for extremely wet conditions. Not for submarine or similar applications. |
| Voltage levels: | 6/10 (12) kV 12/20 (24) kV |

DRYREX



AXLJ-F TT

Product examples
6/10 (12) kV

Also available in other screen sizes.

| Cable type | Nominal diameter of conductor mm | Overall diameter of cable, approx. mm | Weight kg/km |
|------------|----------------------------------|---------------------------------------|--------------|
| AXLJ-F TT | | | |
| 3x50/16 | 8,1 | 45 | 1400 |
| 3x70/16 | 9,5 | 48 | 1620 |
| 3x95/16 | 11,2 | 52 | 1950 |
| 3x120/16 | 12,6 | 55 | 2300 |
| 3x150/25 | 14,1 | 59 | 2800 |
| 3x185/25 | 15,8 | 63 | 3200 |
| 3x240/25 | 18,0 | 68 | 3800 |
| 3x300/25 | 20,3 | 73 | 4600 |

12/20 (24) kV

| Cable type | Nominal diameter of conductor mm | Overall diameter of cable, approx. mm | Weight kg/km |
|------------|----------------------------------|---------------------------------------|--------------|
| AXLJ-F TT | | | |
| 3x50/16 | 8,1 | 54 | 1850 |
| 3x70/16 | 9,5 | 57 | 2100 |
| 3x95/16 | 11,2 | 61 | 2500 |
| 3x120/16 | 12,6 | 64 | 2900 |
| 3x150/25 | 14,1 | 68 | 3350 |
| 3x185/25 | 15,8 | 72 | 3800 |
| 3x240/25 | 18,0 | 77 | 4500 |

TSLF, AHXCMK-W TT

CENELEC HD 620 S2:2010 Part 10 Section K, IEC 60502-2

| | |
|-------------------------------------|---|
| Conductor: | Watertight round stranded and compacted aluminium conductor (EN 60228 class 2). |
| Conductor screen: | Semiconducting compound. |
| Insulation: | Extruded cross-linked polyethylene (XLPE). |
| Insulation screen: | Semiconducting compound. |
| Longitudinal watertightness: | Semi-conducting water swellable tape over insulation screen and metallic screen. |
| Metallic screen: | Helically applied copper wires with a copper tape counter helix. |
| Radial watertightness: | Longitudinally applied aluminium/polyethylene laminated foil bonded to the sheath. |
| Sheath: | Extruded grey polyethylene (PEMD) sheath. Sheath has a black semiconducting outer layer. |
| Applications: | Cable is intended for fixed installations indoors and outdoors and may also be buried in soil. Cable construction is both longitudinally and radially watertight and is therefore suitable for wet conditions. Not for submarine or similar applications. |
| Voltage levels: | 6/10 (12) kV 12/20 (24) kV |



TSLF, AHXCMK-W TT

Product examples 6/10 (12) kV

Also available in other screen sizes.

| Cable type TSLF, AHXCMK-W TT | Nominal diameter of conductor mm | Overall diameter of cable, approx. mm | Weight kg/km |
|------------------------------------|--|---|-----------------|
| 3x1x50/16 | 8,1 | 54 | 1600 |
| 3x1x95/25 | 11,2 | 62 | 2440 |
| 3x1x150/25 | 14,1 | 68 | 3060 |
| 3x1x240/35 | 18,0 | 79 | 4390 |

12/20 (24) kV

| Cable type TSLF, AHXCMK-W TT | Nominal diameter of conductor mm | Overall diameter of cable, approx. mm | Weight kg/km |
|------------------------------------|--|---|-----------------|
| 3x1x50/16 | 8,1 | 62 | 2050 |
| 3x1x95/25 | 11,2 | 69 | 2910 |
| 3x1x150/25 | 14,1 | 78 | 3600 |
| 3x1x240/35 | 18,0 | 86 | 5070 |

AHXAMK-W and AHXAMK-WM

CENELEC HD 620 S2:2010 Part 10 Section F

| | |
|-------------------------------------|---|
| Conductor: | Watertight round stranded and compacted aluminium conductor (EN 60228 class 2). |
| Conductor screen: | Semiconducting compound. |
| Insulation: | Extruded cross-linked polyethylene (XLPE). |
| Insulation screen: | Semiconducting compound. |
| Longitudinal watertightness: | Watertight conductor construction and waterswellable tape over insulation screen conforming longitudinally watertight cable construction. |
| Radial watertightness: | Longitudinally applied aluminium/polyethylene laminated foil bonded to the sheath. |
| Sheath: | Extruded black weather resistant polyethylene compound over individual phase conductors. |
| Earth conductor: | Circular stranded and compacted copper conductor (AHXAMK-W). |
| Carrier cable: | Insulated galvanized steel wire (AHXAMK-WM). Three sheathed phase conductors are laid up together with earth conductor or carrier cable. |
| Applications: | Both cables are intended for fixed installations indoors and outdoors. AHXAMK-WM is also suitable for over head line installations. |
| Voltage levels: | 6/10 (12) kV 12/20 (24) kV |



AHXAMK-W

Product examples 6/10 (12) kV

Also available in other screen sizes.

| Cable type AHXAMK-W | Nominal diameter of conductor mm | Overall diameter of cable, approx. mm | Weight kg/km |
|------------------------|--|---|-----------------|
| 3x70+35 | 9,5 | 55 | 2150 |
| 3x95+35 | 11,2 | 59 | 2550 |
| 3x120+35 | 12,6 | 62 | 2710 |
| 3x150+35 | 14,1 | 66 | 3190 |
| 3x185+35 | 15,8 | 71 | 3640 |
| 3x240+35 | 18,0 | 76 | 4350 |
| 3x300+35 | 20,3 | 81 | 5030 |



12/20 (24) kV

| Cable type AHXAMK-W | Nominal diameter of conductor mm | Overall diameter of cable, approx. mm | Weight kg/km |
|------------------------|--|---|-----------------|
| 3x70+35 | 9,5 | 65 | 2670 |
| 3x95+35 | 11,2 | 69 | 3050 |
| 3x120+35 | 12,6 | 73 | 3420 |
| 3x150+35 | 14,1 | 76 | 3780 |
| 3x185+35 | 15,8 | 80 | 4280 |
| 3x240+70 | 18,0 | 86 | 5440 |



AHXAMK-WM

Product examples
6/10 (12) kV

Also available in other screen sizes.



| Cable type | Nominal diameter of conductor | Overall diameter of cable, approx. | Weight |
|------------|-------------------------------|------------------------------------|--------|
| AHXAMK-WM | mm | mm | kg/km |
| 3x50+62 | 8,1 | 58 | 1900 |
| 3x70+62 | 9,5 | 61 | 2160 |
| 3x95+62 | 11,2 | 64 | 2500 |
| 3x120+62 | 12,6 | 67 | 2820 |
| 3x150+62 | 14,1 | 71 | 3160 |
| 3x185+62 | 15,8 | 75 | 3600 |
| 3x240+62 | 18,0 | 80 | 4250 |

12/20 (24) kV

| Cable type | Nominal diameter of conductor | Overall diameter of cable, approx. | Weight |
|------------|-------------------------------|------------------------------------|--------|
| AHXAMK-WM | mm | mm | kg/km |
| 3x50+62 | 8,1 | 66 | 2360 |
| 3x70+62 | 9,5 | 70 | 2680 |
| 3x95+62 | 11,2 | 73 | 3030 |
| 3x120+62 | 12,6 | 77 | 3410 |
| 3x150+62 | 14,1 | 79 | 3750 |
| 3x185+62 | 15,8 | 82 | 4200 |

AHXCМК-WTC / AXKJ-F

CENELEC HD 620 S2:2010 Part 10 Section F / M

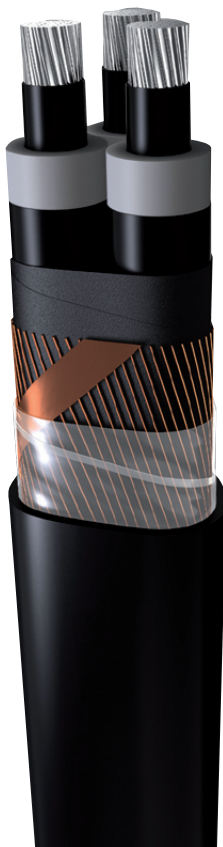
| | |
|---------------------------|---|
| Conductor: | Watertight round stranded and compacted aluminium conductor (EN 60228 class 2). |
| Conductor screen: | Semiconducting compound. |
| Insulation: | Extruded cross-linked polyethylene (XLPE). |
| Insulation screen: | Semiconducting compound. |
| Metallic screen: | Helically applied copper wires with a copper tape counter helix. |
| Sheath: | Black PVC sheath. |
| Applications: | Cable is intended for fixed installations indoors and outdoors. |
| Voltage levels: | 6/10 (12) kV 12/20 (24) kV |



AHXCМК-WTC / AXKJ-F

Product examples 6/10 (12) kV

Also available in other screen sizes.



| Cable type AHXCМК-WTC / AXKJ-F | Nominal diameter of conductor mm | Overall diameter of cable, approx. mm | Weight kg/km |
|--------------------------------------|--|---|-----------------|
| 3x70/16 | 9,5 | 49 | 1810 |
| 3x95/25 | 11,2 | 53 | 2250 |
| 3x120/25 | 12,6 | 56 | 2600 |
| 3x150/25 | 14,1 | 60 | 2950 |
| 3x185/35 | 15,8 | 64 | 3500 |
| 3x240/35 | 18,0 | 70 | 4200 |
| 3x300/35 | 20,3 | 74 | 4850 |

12/20 (24) kV

| Cable type AHXCМК-WTC / AXKJ-F | Nominal diameter of conductor mm | Overall diameter of cable, approx. mm | Weight kg/km |
|--------------------------------------|--|---|-----------------|
| 3x70/16 | 9,5 | 58 | 2340 |
| 3x95/25 | 11,2 | 63 | 2840 |
| 3x120/25 | 12,6 | 66 | 3220 |
| 3x150/25 | 14,1 | 69 | 3610 |
| 3x185/35 | 15,8 | 73 | 4180 |
| 3x240/35 | 18,0 | 80 | 4990 |

AHXCMK-WTC/PE, AXLJ-F LT

CENELEC HD 620 S2:2010 Part 10 Section F / M

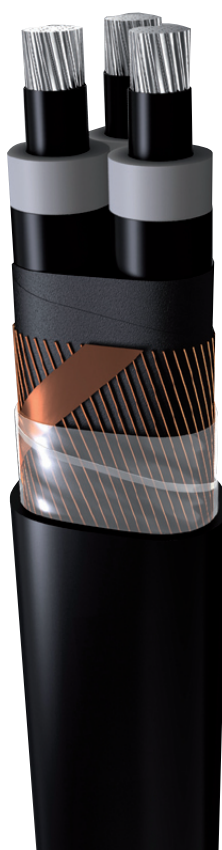
| | |
|---------------------------|---|
| Conductor: | Watertight round stranded and compacted aluminium conductor (EN 60228 class 2). |
| Conductor screen: | Semiconducting compound. |
| Insulation: | Extruded cross-linked polyethylene (XLPE). |
| Insulation screen: | Semiconducting compound. |
| Metallic screen: | Helically applied copper wires with a copper tape counter helix. |
| Sheath: | Black PVC sheath. |
| Applications: | Cable is intended for fixed installations indoors and outdoors. |
| Voltage levels: | 6/10 (12) kV 12/20 (24) kV |

DRYREX

AHXCMK-WTC/PE, AXLJ-F LT

Product examples
6/10 (12) kV

Also available in other screen sizes.



| Cable type AHXCMK-WTC/PE, AXLJ-F LT | Nominal diameter of conductor mm | Overall diameter of cable, approx. mm | Weight kg/km |
|---|--|---|-----------------|
| 3x50/16 | 8,1 | 45 | 1370 |
| 3x70/16 | 9,5 | 48 | 1640 |
| 3x95/25 | 11,2 | 52 | 1940 |
| 3x120/25 | 12,8 | 56 | 2370 |
| 3x150/25 | 14,2 | 59 | 2690 |
| 3x185/25 | 16,2 | 64 | 3100 |
| 3x240/25 | 18,6 | 69 | 3760 |
| 3x300/35 | 20,3 | 74 | 4570 |

12/20 (24) kV

| Cable type AHXCMK-WTC/PE, AXLJ-F LT | Nominal diameter of conductor mm | Overall diameter of cable, approx. mm | Weight kg/km |
|---|--|---|-----------------|
| 3x50/16 | 8,1 | 55 | 1840 |
| 3x70/16 | 9,5 | 58 | 2130 |
| 3x95/25 | 11,2 | 62 | 2480 |
| 3x120/25 | 12,6 | 66 | 2940 |
| 3x150/25 | 14,1 | 69 | 3300 |
| 3x185/25 | 15,8 | 73 | 3760 |
| 3x240/25 | 18,0 | 79 | 4500 |
| 3x300/35 | 20,3 | 82 | 5250 |

REKA

C A B L E S

Reka Cables Ltd.
Niinistökatu 8-12
P.O.Box 12, FI-05801 Hyvinkää
Finland

Tel. +358 207 200 20
Fax +358 207 200 300
www.rekacables.com



50
1961-2011