

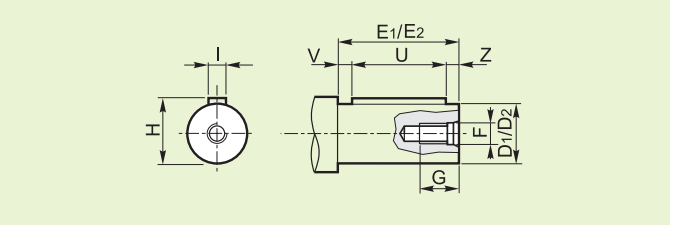
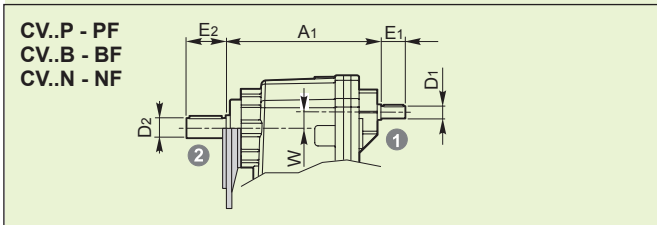
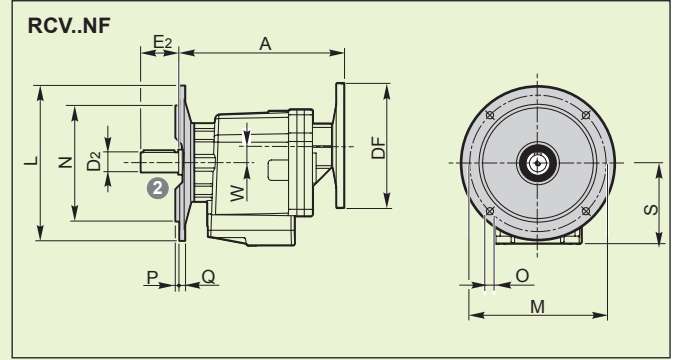
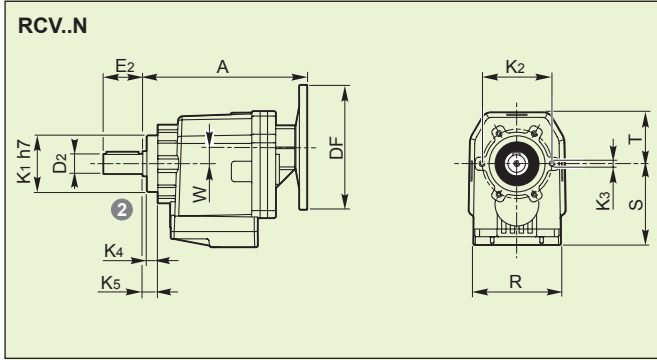
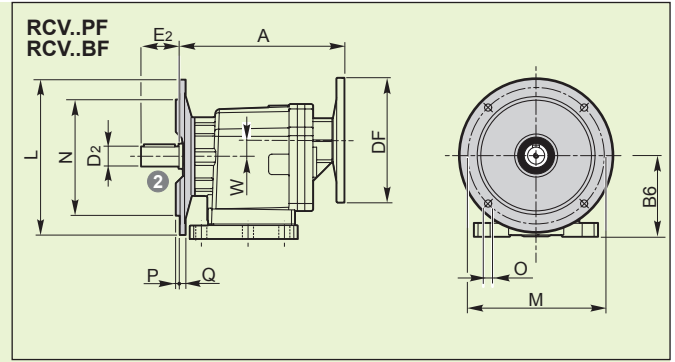
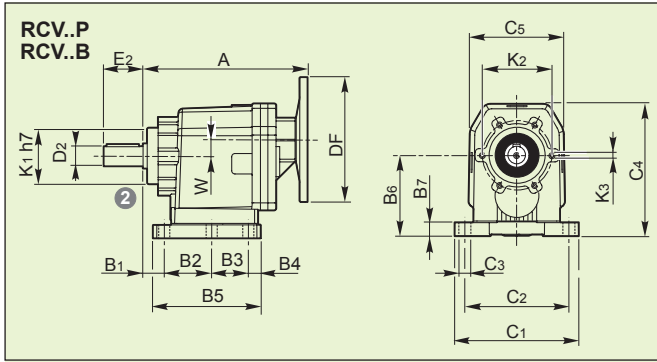
RIDUTTORI COASSIALI
HELICAL GEAR REDUCERS
STIRNRADGETRIEBE
REDUCTEURS COAXIAUX
REDUCTORES DE ENGRANAJES CILINDRICOS
RIDUTOR COASSIAL

CV- RCV

202A - 252A - 253A



CV RCV	i	n ₁ = 2800 min ⁻¹			n ₁ = 1400 min ⁻¹			n ₁ = 900 min ⁻¹					
		n ₂	Mn ₂	P ₁	n ₂	Mn ₂	P ₁	n ₂	Mn ₂	P ₁	IEC B5	IEC B14	
		min ⁻¹	Nm	kW	min ⁻¹	Nm	kW	min ⁻¹	Nm	kW			
100 Nm	202A	5.49	510	61	3.4	255	73	2.0	164	73	1.3	56-63-71-80-90	56-63-71-80-90
		6.46	433	59	2.8	217	70	1.7	139	70	1.1	56-63-71-80-90	56-63-71-80-90
		7.75	361	60	2.4	181	72	1.4	116	73	0.92	56-63-71-80-90	56-63-71-80-90
		8.57	327	61	2.2	163	73	1.3	105	73	0.84	56-63-71-80-90	56-63-71-80-90
		9.92	282	64	2.0	141	77	1.2	91	77	0.76	56-63-71-80-90	56-63-71-80-90
		11.67	240	65	1.7	120	78	1.0	77	78	0.66	56-63-71-80-90	56-63-71-80-90
		14.00	200	65	1.4	100	78	0.85	64	78	0.55	56-63-71-80-90	56-63-71-80-90
		15.48	181	65	1.3	90	78	0.77	58	78	0.49	56-63-71-80-90	56-63-71-80-90
		18.01	155	81	1.4	78	97	0.82	50	97	0.53	56-63-71-80-90	56-63-71-80-90
		21.19	132	80	1.2	66	96	0.69	42.5	96	0.44	56-63-71-80-90	56-63-71-80-90
		25.43	110	88	1.1	55	106	0.64	35.4	106	0.41	56-63-71-80-90	56-63-71-80-90
		28.13	100	86	0.93	50	103	0.56	32.0	103	0.36	56-63-71-80-90	56-63-71-80-90
		31.71	88	89	0.86	44.2	108	0.52	28.4	107	0.33	56-63-71-80-90	56-63-71-80-90
		37.31	75	90	0.74	37.5	107	0.44	24.1	107	0.28	56-63-71-80-90	56-63-71-80-90
		44.77	63	89	0.61	31.3	107	0.36	20.1	107	0.23	56-63-71-80-90	56-63-71-80-90
		49.52	57	87	0.54	28.3	104	0.32	18.2	104	0.21	56-63-71-80-90	56-63-71-80-90
		54.20	52	86	0.48	25.8	103	0.29	16.6	103	0.19	56-63-71-80-90	56-63-71-80-90
60.43	46.3	75	0.38	23.2	90	0.23	14.9	90	0.15	56-63-71-80-90	56-63-71-80-90		
200 Nm	252A	5.02	558	111	6.8	279	132	4.0	179	133	2.6	56-63-71-80-90	71-80-90
		5.92	473	119	6.1	236	143	3.7	152	143	2.4	56-63-71-80-90	71-80-90
		6.47	433	122	5.8	216	146	3.4	139	146	2.2	56-63-71-80-90	71-80-90
		7.88	355	123	4.8	178	147	2.8	114	147	1.8	56-63-71-80-90	71-80-90
		8.93	314	128	4.4	157	153	2.6	101	153	1.7	56-63-71-80-90	71-80-90
		10.53	266	130	3.8	133	156	2.3	85	156	1.5	56-63-71-80-90	71-80-90
		11.51	243	127	3.4	122	152	2.0	78	152	1.3	56-63-71-80-90	71-80-90
		14.01	200	127	2.8	100	153	1.7	64	153	1.1	56-63-71-80-90	71-80-90
		16.42	171	160	3.0	85	192	1.8	55	192	1.1	56-63-71-80-90	71-80-90
		19.35	145	169	2.7	72	202	1.6	46.5	203	1.0	56-63-71-80-90	71-80-90
		21.16	132	164	2.4	66	196	1.4	42.5	196	0.91	56-63-71-80-90	71-80-90
		25.75	109	158	1.9	54	189	1.1	35.0	190	0.72	56-63-71-80-90	71-80-90
		31.27	90	170	1.7	44.8	203	1.0	28.8	204	0.64	56-63-71-80-90	71-80-90
		36.86	76	171	1.4	38.0	206	0.85	24.4	204	0.54	56-63-71-80-90	71-80-90
		40.29	69	166	1.3	34.7	199	0.75	22.3	199	0.48	56-63-71-80-90	71-80-90
		49.04	57	160	1.0	28.5	191	0.59	18.4	191	0.38	56-63-71-80-90	71-80-90
		53.95	52	146	0.83	26.0	175	0.50	16.7	175	0.32	56-63-71-80-90	71-80-90
61.33	45.7	150	0.75	22.8	179	0.45	14.7	179	0.29	56-63-71-80-90	71-80-90		
67.47	41.5	146	0.66	20.8	175	0.40	13.3	175	0.25	56-63-71-80-90	71-80-90		
253A	63.09	44.4	150	0.75	22.2	179	0.45	14.3	179	0.29	56-63-71	56-63-71	
	74.36	37.7	157	0.66	18.8	188	0.40	12.1	188	0.26	56-63-71	56-63-71	
	81.29	34.4	158	0.61	17.2	190	0.37	11.1	190	0.24	56-63-71	56-63-71	
	98.94	28.3	162	0.51	14.2	194	0.31	9.1	194	0.20	56-63-71	56-63-71	
	108.83	25.7	161	0.47	12.9	193	0.28	8.3	193	0.18	56-63-71	56-63-71	
	120.15	23.3	171	0.45	11.7	205	0.27	7.5	205	0.17	56-63-71	56-63-71	
	141.61	19.8	179	0.40	9.9	215	0.24	6.4	215	0.15	56-63-71	56-63-71	
	154.81	18.1	171	0.35	9.0	206	0.21	5.8	206	0.13	56-63-71	56-63-71	
	188.42	14.9	159	0.27	7.4	191	0.16	4.8	191	0.10	56-63-71	56-63-71	
207.26	13.5	153	0.23	6.8	183	0.14	4.3	183	0.09	56-63-71	56-63-71		



RCV CV	RCV				CV
	IEC	DF		A	
		(B5)	(B14)		
202A	56	120	80	160	173 (156.8)*
	63	140	90	160	
	71	160	105	160	
	80	200	120	176.5	
	90	200	140	176.5	
252A	56	120	—	195	188
	63	140	—	195	
	71	160	105	195	
	80	200	120	195	
	90	200	140	195	
253A	56	120	80	190	157
	63	140	90	190	
	71	160	105	190	

RCV - CV		L	M	N	O	P	Q
202A	NF200- PF200 - BF200	200	165	130	11.5	3.5	12
	NF160- PF160 - BF160	160	130	110	9.5	3	12
	NF140- PF140 - BF140	140	115	95	9.5	3	12
	NF120- PF120 - BF120	120	100	80	9	3	12
252A 253A	NF200- PF200 - BF200	200	165	130	11.5	3.5	12
	NF160- PF160 - BF160	160	130	110	9.5	3	12
	NF140- PF140 - BF140	140	115	95	9.5	3	12

1 Albero entrata / Input shaft / Antriebswelle Arbre d'entrée / Eje de entrada / Eixo de entrada									
CV	D ₁ h6	E ₁	F	G	H	I	U	V	Z
202A	19	40	M6	15	21.5	6	30	5	5
	(16)*	(40)*	(M6)	(15)	(18)	(5)	(25)	(10)	(5)
252A	19	40	M6	15	21.5	6	30	5	5
253A	16	40	M6	15	18	5	25	10	5

2 Albero uscita / Output shaft / Abtriebswelle Arbre de sortie / Eje de salida / Eixo de saída									
CV RCV	D ₂ h6	E	F	G	H	I	U	V	Z
202A	14	30	M5	12	16	5	20	5	5
	16	40	M6	16	18	5	30	5	5
	19	40	M6	16	21.5	6	30	5	5
	20	40	M8	18	22.5	6	30	5	5
	24	40	M8	18	27	8	30	5	5
	25	50	M8	18	28	8	40	5	5
	28	60	M8	18	31	8	50	5	5
	30	60	M10	22	33	8	50	5	5
252A 253A	19	40	M6	16	21.5	6	30	5	5
	24	50	M8	18	27	8	40	5	5
	25	50	M8	18	28	8	40	5	5
	28	60	M8	18	31	8	50	5	5
	30	60	M10	22	33	8	50	5	5

A richiesta / On request / Auf Anfrage / Sur demande / Bajo demanda / Sob consulta

(* Consultare il nostro servizio tecnico / Please consult our technical service department / Sie bitte Rücksprache mit unserem technischen Büro / Veuillez nous consulter / Consultar nuestro servicio técnico / Consulta o nosso serviço técnico

RCV - CV	B1	B2	B3	B4	B5	B6	B7	C1	C2	C3	C4
202A	P	18	60	30	14.5	116.5	100	150	130	11	150.5
	B	18	50	37	16	113.5	85	130	110	9	135.5
252A	P	18	70	40	14	136	110	185	160	11	175
253A	B	18	60	47.5	15	135	100	155	130	11	165

RCV - CV	C5	K1	K2	K3	K4	K5	R	S	T	W
202A	97	60	75	M6	12.5	15.5	99	87	50.5	0
252A	122	70	90	M8	12.5	15.5	112	104	65	0
253A	122	70	90	M8	12.5	15.5	112	104	65	20