

Installation materials buyers guide

Get it right first time



Get it right, first time.

The Schneider Electric brand is synonymous with quality. Products are manufactured under the most stringent control systems in full accordance with the latest requirements and are used in some of the most extreme conditions and applications.

With our solutions capable of withstanding rigorous demands, you can be reassured that you are specifying components that will last for years to come.

With Schneider Electric, get it right, first time.

Thorsman and Tower are now Schneider Electric.

We are changing our brand names and becoming one Schneider Electric. You'll get the same great quality products, but from one name you can trust.

Only the product packaging will change - all other specifications will remain the same. In addition we have not only changed, but also improved the packaging and labelling design for both you the distributor and the installer.

Contents

Fixings chart.....	6 - 7
--------------------	-------

Plugs and fixings

Wall plugs - TP and TPA.....	8
Frame fixings - TFF.....	8
Hammer fixings - THI.....	9
Nylon wall plugs - TNP.....	9
Nylon window frame anchors - TNW.....	9
Metal and nylon cavity fixings - TPD™.....	9
Platti plugs - TPP.....	10
Duo max - TSP.....	10
Spring toggles - TOG.....	10
Hollow wall anchors - TMX™.....	10

Foam, adhesives, sealants and fillers

Expanding foam.....	11
Gap filling adhesive.....	11
Sealants, fillers and adhesives.....	12

Anchors

Sleeve anchors.....	13
Wedge anchors.....	13
Through bolts.....	14
Shield anchor projection bolts - PB.....	14
Shield anchor loose bolts - LB.....	15
Shield anchors.....	15
Hooks and eyes.....	15

Screw fixings and nails

Twin thread wood screws.....	16
Hi-tech chipboard screws.....	17 - 18
Combi roundhead screws.....	19
Stainless steel screws.....	19
Decking screws.....	20
Roundhead wood screws.....	20
Brass woodscrews.....	20 - 21
Brass pan head machine screws.....	21
Raised head machine screws.....	22
Roofing bolts and nuts.....	22
Penny washers.....	22
Drywall screws.....	23
Self drilling drywall screws.....	23
Collated drywall screws.....	24
Steel to steel self drilling screws.....	24
Washerless steel to steel screws.....	25
Reduced point stitching screws.....	25
Gash point screws.....	25
Magnetic sockets.....	25
Timber to steel self drilling screws.....	26
Masonry screws.....	26
Masonry nails.....	27

Cable clips and electrical fixings

Cable ties - TCT	28
Cable tie plug	28
Fixing bands.....	29
PVC cable grommets	29
Compression grommets.....	29
Cleats	30
Industrial enclosures and glands.....	31
Glands and shrouds	32 - 33
Thorsman cable clips premium - TC	34
Thorsman cable clips standard - TCA	35
Tower round plus clips	35 - 36
Tower flat plus clips	36
Tower TV cable and satellite clips	36
Tower flat clips.....	36 - 37
Tower round clips	37
Pin plugs.....	38
Low smoke and fume clips and saddles	38
Self adhesive clips.....	38
Pipe clips and spacers	39
Pipe trunking - TRL	39
Terminal connectors	40
Chocbox	40
Earth clamps	40
PVC insulation tape.....	41
Specialist tapes	41
PVC sleeving	42
Cable tidy poly packs.....	42

Hand tools

Electrical hand tools.....	43
Re-threading tool.....	44
General electricians tools	44
Crimping tool.....	44
Tool sets	44
Hammers.....	44
Tape measures	45
Knives.....	45
Saws, hacksaws and blades.....	45
Chisels.....	45
Cable tacker and staples.....	45

Trade tubs and fixing cases

Trade tubs.....	46
Fixing cases.....	46

Site power and lighting

Site power	47
Cable reels and trailing leads	47
Worklights.....	48

Power tool accessories

Screwdriver bits.....	49
SDS plus chisels.....	49
Hammer SDS plus bit - THB	49
High speed steel rolled flute drill	50
Imperial jobber drill.....	50
Auger bits	51
Flat bits.....	51
Step and taper drills	51
Holesaws.....	52
Arbors.....	52
Electricians box sinker	53

Electrical testing

Test meters	54
Detectors.....	54
Power testers	54
Multi testers.....	55
Damp tester.....	55
Socket tester	55

Fixings guide



Fixings guide

	Application		
	Cable ladders, cable trays and mesh trays	Poles and posts perimeter	Mini trunking
Wall plugs - TP and TPA (p8)	● 1	● 1	● 1
Metal and nylon cavity fixings - TPD™ (p9)	■	■	■
Hollow wall anchors - TMX™ (p10)	■	■	■
Wedge anchors (p13)	● 1	■	■
Through bolts (p14)	● 1	■	■
Shield anchors (p15)	● 1	■	■
Twin thread wood screws (p16)	■	■	● 1
Hi-tech chipboard screws (p17 - 18)	■	■	● 1
Stainless steel screws (p19)	■	■	● 1
Roundhead wood screws (p20)	■	● 1	■
Raised head machine screws (p22)	■	■	● 1
Roofing nuts and bolts (p22)	●	■	■
Drywall screws (p23)	■	■	● 1
Steel to steel self drilling screws (p24)	●	■	■
Gash point screws (p25)	■	■	■
Masonry nails (p27)	■	■	■
Fixing band (p29)	■	■	■
Cable clips (p34 - p37)	■	■	■

	Material		
	Concrete stone/rock	Hollow bricks and building blocks	Plaster board
Wall plugs (p8)	● 1	● 1	● 1
Metal and nylon cavity fixings - TPD™ (p9)	■	■	●
Hollow wall anchors - TMX™ (p10)	■	■	●
Wedge anchors (p13)	● 1	■	■
Through bolts (p14)	●	■	■
Shield anchors (p15)	●	■	■
Twin thread wood screws (p16)	● 2	● 1	● 2
Hi-tech chipboard screws (p17 - 18)	● 2	● 2	● 2
Stainless steel screws (p19)	● 2	● 2	● 2
Roundhead wood screws (p20)	● 2	● 2	● 2
Raised head machine screws (p22)	● 2	● 2	● 2
Roofing nuts and bolts (p22)	●	●	■
Drywall screws (p23)	■	■	●
Steel to steel self drilling screws (p24)	■	■	●
Gash point screws (p25)	■	■	■
Masonry nails (p27)	●	●	■
Fixing band (p29)	Dependant on fixing	Dependant on fixing	Dependant on fixing
Cable clips (p34 - p37)	■	■	●

Key

● = Suitable

■ = Not suitable

1 = Together with screws and/or plugs etc

2 = Together with plug

3 = Together with clip plug TCP

Perimeter trunking and cable distribution trunking	Installation boxes	Cables and conduits	Wiring accessories
● 1	● 1	■	● 1
●	■	■	●
●	■	■	●
■	■	■	●
■	■	■	●
■	■	■	●
● 1	● 2	■	● 2
● 1	● 2	■	● 2
● 2	● 2	■	● 2
■	● 2	■	● 2
● 2	● 2	■	● 2
■	■	■	■
● 1	■	■	■
■	■	■	● 2
■	■	■	● 2
■	■	■	● 2
■	■	■	● 2
■	■	●	● 2

Wooden board	Sheet metal	Wood	Plastic
● 1	■	■	● 1
■	■	■	●
●	●	■	●
■	■	■	●
■	■	■	●
● 2	■	● 2	● 2
● 2	■	● 2	● 2
● 2	■	● 2	● 2
● 2	■	● 2	● 2
● 2	■	● 2	● 2
●	●	●	■
●	●	●	■
●	●	●	● 2
●	●	●	● 3
■	■	■	● 4
Dependant on fixing	Dependant on fixing	Dependant on fixing	Dependant on fixing
●	■	●	● 5

Plugs and fixings



Wall plugs - TP

- Supplied on a sprue of 10, boxed in 100's
- Dual expansion giving high load values
- Full colour coded range
- Singles and bulk packs available

Product code	Description	Pack quantity	Minimum order unit
1001007	TP 1 yellow	100	1000
1003003	TP 2 red	100	1000
1005008	TP 2B brown	100	1000
1006006	TP 3 blue	100	1000
1007004	TP 4 green	100	1000



Wall plugs economy - TPA supplied loose

- Boxed in 100's
- Shrink wrapped in 1000's
- Pallet quantities available
- Plain boxes

Product code	Description	Pack quantity	Minimum order unit
1090600	TPA 1 yellow	100	1000
1090605	TPA 2 red	100	1000
1090610	TPA 2B brown	100	1000
1090615	TPA 3 blue	100	1000



Wall plugs economy - TPA bulk supplied loose

- Shrink wrapped in 1000's
- Carton quantities only - bulk quantities as stated below
- Plain boxes

Product code	Description	Pack quantity	Minimum order unit
1090720	TPA 2 red	100	25000
1090725	TPA 2B brown	100	20000



Frame fixings - TFF

- For through fixing installations such as doors and window frames, trunking, switches and battens
- Fast installation
- Powerful expansion

Product code	Description	Pack quantity	Minimum order unit
1130110	8 x 80mm	100	100
1130115	8 x 100mm	100	100
1130120	8 x 120mm	100	100
1130155	10 x 80mm	50	50
1130160	10 x 100mm	50	50
1130165	10 x 120mm	50	50
1130170	10 x 140mm	50	50
1130175	10 x 160mm	50	50

Plugs and fixings



Hammer fixings - THI

- Hammer in fixing for fast installation into a wide variety of materials
- Knock-in protection prevents premature expansion during installations
- High load values

Product code	Description	Pack quantity	Minimum order unit
1131110	5 x 30mm	100	100
1131115	5 x 50mm	100	100
1131130	6 x 35mm	100	100
1131135	6 x 50mm	100	100
1131140	6 x 60mm	100	100
1131145	6 x 70mm	100	100
1131160	8 x 60mm	100	100
1131165	8 x 80mm	100	100
1131170	8 x 100mm	100	100
1131175	8 x 120mm	100	100
1131180	8 x 140mm	100	100



Nylon wall plugs - TNP

- Suitable for concrete, stone, lightweight concrete, hollow block brick and plasterboard
- High load values
- Easy to install

Product code	Description	Pack quantity	Minimum order unit
1060030	TNP 6 x 30mm	100	100
1060040	TNP 7 x 35mm	100	100
1060050	TNP 8 x 40mm	100	100
1060060	TNP 10 x 50mm	50	50
1060070	TNP 12 x 60mm	25	25
1060080	TNP 14 x 70mm	20	20



Nylon window frame anchors - TNW

- Suitable for the installation of uPVC, aluminium and wooden window frames and doors
- High grade nylon sleeve and zinc plated screw prevents corrosion
- Complete with cover cap
- GRP expansion wedge

Product code	Description	Pack quantity	Minimum order unit
1501610	8 x 100mm	100	100
1501615	8 x 140mm	100	100
1501630	10 x 75mm	100	100
1501635	10 x 100mm	100	100
1501640	10 x 120mm	100	100
1501645	10 x 140mm	100	100
1501650	10 x 165mm	100	100



Metal and nylon cavity fixings - TPD™

- Ideal for light installations in plasterboard
- Supplied complete with screw
- Self-drilling design for easy installation

Product code	Description	Pack quantity	Minimum order unit
1220010	TPD™ nylon	100	100
1220104	TPD™ metal	100	100

Plugs and fixings



Platti plugs - TPP

- Suitable for a range of plasterboard thicknesses
- A captive fixing - even without screw
- All metal construction
- High load values

Product code	Description	Pack quantity	Minimum order unit
1200005	10 x M4S	100	100
1200401	13 x M5S	100	100
1200443	13 PLUG	1000	1000
1200203	10 x M4K (hook)	100	100



Duo max - TSP

- Suitable for a range of plasterboard thicknesses
- A captive fixing - even without screw
- Corrosion resistant
- High load values

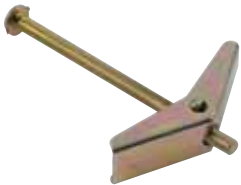
Product code	Description	Pack quantity	Minimum order unit
1240001	6 x 50mm	25	25
1248004	10 x 65mm	25	25
1249002	10 x 75mm	25	25



Spring toggles - TOG

- Ideal for overhead cavity fixing
- Spreads loads over a wide area
- Easy installation
- Economical

Product code	Description	Pack quantity	Minimum order unit
1208016	10 M3 x 50mm	50	50
1208057	15 M5 x 50mm	50	50
1208060	15L M5 x 80mm	50	50



Hollow wall anchors - TMX™

- Ideal for overhead cavity fixing
- Available to suit a wide range of plasterboard thicknesses
- Calibrated legs spread the load and give a fully captive fixing
- All metal fire resistant fixing
- Mounting tool for expanding

Product code	Description	Sheet thickness	Screw length	Pack quantity	Minimum order unit
1260025	4E (409)	5 - 15mm	40mm	100	100
1260066	4D (423)	16 - 26mm	50mm	50	50
1260130	5M (510)	6 - 13mm	38mm	50	50
1260108	5E (514)	3 - 16mm	57mm	50	50
1260124	5D (527)	12 - 32mm	70mm	50	50
1260140	6E (614)	3 - 16mm	57mm	50	50
1260165	6D (627)	23 - 32mm	70mm	50	50
1265040	Tool			each	each



Foam and adhesive



Expanding foam

- Ideal for filling large or irregular gaps
- Suitable for gun or handheld application
- Expands to at least 30 times its original volume
- Fire rated product approved to BS 476 (part 20) up to 2 hour protection

Product code	Description	Pack quantity	Minimum order unit
1520002	Multi purpose hand held 500ml	12	12
1520005	Multi purpose hand held 750ml	12	12
1520030	Multi purpose fire rated 750ml	12	12



Gap filling adhesive

- Multi use solvent free gap filling adhesive

Product code	Description	Pack quantity	Minimum order unit
1520200	Multi purpose gap filling adhesive 295ml	12	12
1520060	Dispensing gun for 150ml and 300ml	1	1

Sealants and fillers

Sealants, fillers and adhesives

- Universal decorators caulk, permanently flexible white acrylic filler that is mould resistant. Fast and easy to use flexible acrylic for gap and crack filling. Can be overpainted after one hour. Suitable for pointing around door/window frames, sealing cracks between walls and skirting boards, filling areas around cornices and architraves and for sealing small movement joints in masonry
- Low Smoke Intumescent Acrylic Sealant, maintains joint integrity for up to 4 hours in a fire. Suitable for sealing holes through internal partitions and walls, sealing between fire door frames and fire rated walls, for lap and infill joints in fire rated cladding and internal fire check glazing. Towerfire sealant can be overpainted when fully dried
- A multi purpose mould resistant silicone sealant which forms a flexible and durable weather tight seal. Ideal for electrical conduits, glazing, roofing, woodworking, decorating and masonry, flooring, heating and ventilation, ceramic tiling and boat maintenance. UV stabilised
- Universal cartridge gun

Product code	Description	Pack quantity	Minimum order unit
69FILL12	Towerfill white 295ml cartridge	12	12
69FIRE12	Towerfire white 295ml cartridge	12	12
69SEAL12	Towerseal white 295ml cartridge	12	12
69SEALC12	Towerseal clear 295ml cartridge	12	12
1520060	Dispensing gun for 150ml and 300ml	1	1



Anchors

Sleeve anchors

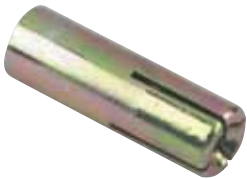
- Suitable for fixing into concrete, brick, stone and dense concrete blocks
- Quick and easy through-fixing installation
- Available in standard nut or bolt head types



Product code	Description	Pack quantity	Minimum order unit
Standard type			
1501500	8 x 40mm	100	100
1501506	8 x 65mm	100	100
1501510	8 x 85mm	100	100
1501520	10 x 50mm	100	100
1501526	10 x 80mm	50	50
1501530	10 x 97mm	50	50
1501540	12 x 60mm	50	50
1501546	12 x 75mm	50	50
1501550	12 x 99mm	30	30
1501556	12 x 129mm	30	30
1501560	16 x 65mm	20	20
1501566	16 x 111mm	20	20
1501570	16 x 147mm	15	15
Hexagonal head type			
1501035	10 x 80mm	50	50
1501040	10 x 100mm	50	50

Wedge anchors

- Suitable for concrete, stone, solid brick and blocks
- Economical with simple hammer in installation
- Captive wedge ideal for overhead work



Product code	Description	Pack quantity	Minimum order unit
2810109	Wedge anchor M6 x 25mm	100	100
2810125	Wedge anchor M8 x 30mm	100	100
2810141	Wedge anchor M10 x 40mm	50	50
2810166	Wedge anchor M12 x 50mm	50	50
2810182	Wedge anchor M16 x 60mm	25	25
2810901	M6 setting tool	1	1
2810927	M8 setting tool	1	1
2810943	M10 setting tool	1	1

Anchors

Through bolts

- Suitable for through fixing into concrete, stone and rock
- Popular sizes have twin clip design
- Available in BZP electro-plated, hot dipped zinc or stainless steel A4



Product code	Description	Pack quantity	Minimum order unit
Electro-plated zinc			
IMT38005	M6 x 40mm	100	100
IMT38006	M6 x 70mm	100	100
IMT38007	M8 x 50mm	100	100
IMT38008	M8 x 95mm	50	50
IMT38009	M10 x 60mm	50	50
IMT38010	M10 x 105mm	25	25
IMT38011	M12 x 85mm	25	25
IMT38012	M12 x 125mm	25	25
Hot dipped zinc			
IMT38013	M6 x 40mm	100	100
IMT38014	M6 x 70mm	100	100
IMT38015	M8 x 50mm	100	100
IMT38016	M8 x 95mm	50	50
IMT38017	M10 x 60mm	50	50
IMT38018	M10 x 105mm	25	25
IMT38019	M12 x 85mm	25	25
IMT38020	M12 x 125mm	25	25
Stainless steel acid proof			
IMT38021	M6 x 40mm	100	100
IMT38022	M6 x 70mm	100	100
IMT38023	M8 x 50mm	100	100
IMT38024	M8 x 95mm	50	50
IMT38025	M10 x 60mm	50	50
IMT38026	M10 x 105mm	25	25

Shield anchor projection bolts - PB

- For use in concrete, stone, rock and brick
- Hole tolerant, ideal for wall or overhead fixing
- All steel construction



Product code	Description	Pack quantity	Minimum order unit
1511100	M6 x 65mm	100	100
1511103	M6 x 85mm	75	75
1511106	M8 x 70mm	50	50
1511108	M8 x 105mm	45	45
1511109	M8 x 120mm	40	40
1511110	M8 x 140mm	30	30
1511112	M10 x 85mm	30	30
1511115	M10 x 100mm	25	25
1511118	M10 x 130mm	20	20
1511120	M10 x 160mm	20	20
1511124	M12 x 115mm	20	20
1511126	M12 x 135mm	15	15

Anchors



Shield anchor loose bolts - LB

- Ideal for fixing heavy machines, fans, industrial doors and switch gear
- Four segment shield for even expansion
- All steel construction

Product code	Description	Pack quantity	Minimum order unit
1511000	M6 x 50mm	100	100
1511003	M6 x 70mm	100	100
1511004	M6 x 90mm	80	80
1511006	M8 x 60mm	50	50
1511009	M8 x 80mm	50	50
1511012	M8 x 90mm	50	50
1511015	M10 x 70mm	30	30
1511018	M10 x 80mm	30	30
1511021	M10 x 100mm	25	25
1511022	M10 x 130mm	20	20
1511024	M12 x 80mm	20	20
1511027	M12 x 100mm	20	20



Shield anchors

- Suitable for supporting suspended ceilings, chain barriers and lighting fixings
- Hole tolerant compared with other types of anchor bolt
- All steel construction

Product code	Description	Pack quantity	Minimum order unit
1511203	M8 x 55mm	100	100
1511206	M10 x 65mm	50	50
1511209	M12 x 75mm	25	25

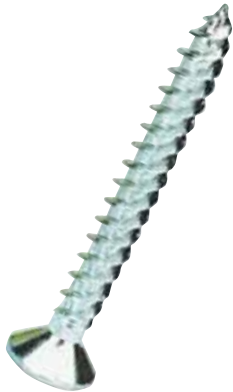


Hooks and eyes

- Provides a secure anchorage for a variety of applications
- Includes hexagon nut and flat washer
- Shield anchor sold separately

Product code	Description	Pack quantity	Minimum order unit
1511231	Hook M6	50	50
1511234	Hook M8	25	25
1511224	Eye M6	50	50
1511227	Eye M8	25	25
1511230	Eye M10	25	25

Screw fixings



Twin thread wood screws

- Suitable for wood, plastic and nylon wall plugs
- Through hardened and zinc plated finish
- Sharp gimlet point

Product code	Description	Pack quantity	Minimum order unit
Countersunk recessed			
3736025	4 x 1/2"	200	1000
3736032	4 x 5/8"	200	1000
3736049	4 x 3/4"	200	1000
3736056	4 x 1"	200	1000
3736070	5 x 1/2"	200	1000
3736087	5 x 5/8"	200	1000
3736117	6 x 1/2"	200	1000
3736124	6 x 5/8"	200	1000
3719172	6 x 3/4"	200	1000
3719196	6 x 1"	200	1000
3719219	6 x 1 1/4"	200	1000
3719226	6 x 1 1/2"	200	1000
3736179	6 x 1 3/4"	200	1000
3719240	6 x 2"	200	1000
3736209	7 x 3/4"	200	1000
3719301	7 x 1"	200	1000
3719318	7 x 1 1/4"	200	1000
3719325	7 x 1 1/2"	200	1000
3719349	8 x 1/2"	200	1000
3736278	8 x 5/8"	200	1000
3719363	8 x 3/4"	200	1000
3719387	8 x 1"	200	1000
3719400	8 x 1 1/4"	200	1000
3719417	8 x 1 1/2"	200	1000
3719424	8 x 1 3/4"	200	1000
3719431	8 x 2"	200	1000
3736353	8 x 2 1/4"	200	1000
3719455	8 x 2 1/2"	200	1000
3736377	8 x 3"	200	1000
3736391	10 x 3/4"	200	1000
3719509	10 x 1"	200	1000
3719516	10 x 1 1/4"	200	1000
3719523	10 x 1 1/2"	200	1000
3719530	10 x 1 3/4"	200	1000
3719547	10 x 2"	200	1000
3719554	10 x 2 1/4"	100	1000
3719561	10 x 2 1/2"	100	1000
3719585	10 x 3"	100	1000
3736476	10 x 3 1/2"	100	1000
3736483	10 x 4"	200	1000
3736506	12 x 1 1/4"	200	1000
3736513	12 x 1 1/2"	100	1000
3736520	12 x 2"	100	1000
3736537	12 x 2 1/2"	100	1000
3736544	12 x 3"	100	1000
3736551	12 x 3 1/2"	100	1000
3736568	12 x 4"	100	1000
Yellow passivated			
3737500	7 x 1"	200	1000
3737503	7 x 1 1/4"	200	1000
3737502	7 x 1 1/2"	200	1000

Screw fixings



Hi-tech chipboard screws

- Through hardened with yellow passivated or BZP finish
- Single thread design provides excellent holding in a variety of materials
- Wax coated to ease penetration
- All imperial equivalents are approximate

Product code	Description		Pack quantity	Minimum order unit
	Metric gauge and length	Imperial gauge and length		
Yellow passivated				
3742026	3 x 13mm	4 x 1/2"	200	1000
3742033	3 x 15mm	4 x 5/8"	200	1000
3742037	3 x 17mm	4 x 11/16"	200	1000
3742040	3 x 20mm	4 x 3/4"	200	1000
3742057	3 x 25mm	4 x 1"	200	1000
3742064	3 x 30mm	4 x 1 1/4"	200	1000
3742088	3.5 x 13mm	6 x 1/2"	200	1000
3742095	3.5 x 15mm	6 x 5/8"	200	1000
3742098	3.5 x 17mm	6 x 11/16"	200	1000
3742101	3.5 x 20mm	6 x 3/4"	200	1000
3742118	3.5 x 25mm	6 x 1"	200	1000
3742125	3.5 x 30mm	6 x 1 1/4"	200	1000
3742127	3.5 x 35mm	6 x 1 3/8"	200	1000
3742132	3.5 x 40mm	6 x 1 1/2"	200	1000
3742170	4 x 15mm	8 x 3/4"	200	1000
3742171	4 x 17mm	8 x 11/16"	200	1000
3742187	4 x 20mm	8 x 3/4"	200	1000
3742194	4 x 25mm	8 x 1"	200	1000
3742200	4 x 30mm	8 x 1 1/4"	200	1000
3742209	4 x 35mm	8 x 1 3/8"	200	1000
3742217	4 x 40mm	8 x 1 1/2"	200	1000
3742224	4 x 45mm	8 x 1 3/4"	200	1000
3742231	4 x 50mm	8 x 2"	200	1000
3742240	4 x 60mm	8 x 2 1/2"	200	1000
3742247	4 x 70mm	8 x 2 3/4"	200	1000
3742255	4.5 x 20mm	9 x 3/4"	200	1000
3742262	4.5 x 25mm	9 x 1"	200	1000
3742279	4.5 x 30mm	9 x 1 1/4"	200	1000
3742280	4.5 x 35mm	9 x 1 3/8"	200	1000
3742286	4.5 x 40mm	9 x 1 1/2"	200	1000
3742293	4.5 x 45mm	9 x 1 3/4"	200	1000
3742309	4.5 x 50mm	9 x 2"	200	1000
3742323	5 x 20mm	10 x 3/4"	200	1000
3742330	5 x 25mm	10 x 1"	200	1000
3742347	5 x 30mm	10 x 1 1/4"	200	1000
3742351	5 x 35mm	10 x 1 3/8"	200	1000
3742354	5 x 40mm	10 x 1 1/2"	200	1000
3742361	5 x 45mm	10 x 1 3/4"	200	1000
3742378	5 x 50mm	10 x 2"	200	1000
3742381	5 x 55mm	10 x 2 3/8"	200	1000
3742385	5 x 60mm	10 x 2 1/2"	100	1000
3742392	5 x 70mm	10 x 2 3/4"	100	1000
3742408	5 x 75mm	10 x 3"	100	1000
3742415	5 x 90mm	10 x 3 1/2"	100	1000
3742422	5 x 100mm	10 x 4"	100	1000
3742446	6 x 30mm	12 x 1 1/4"	200	1000
3742453	6 x 40mm	12 x 1 1/2"	200	1000
3742477	6 x 50mm	12 x 2"	100	1000
3742484	6 x 60mm	12 x 2 1/2"	100	1000
3742491	6 x 70mm	12 x 2 3/4"	100	1000
3742507	6 x 80mm	12 x 3 1/2"	100	1000
3742514	6 x 90mm	12 x 3 1/2"	100	1000
3742521	6 x 100mm	12 x 4"	100	1000

Screw fixings



Hi-tech chipboard screws

- Through hardened with yellow passivated or BZP finish
- Single thread design provides excellent holding in a variety of materials
- Wax coated to ease penetration
- All imperial equivalents are approximate

Product code	Description		Pack quantity	Minimum order unit
	Metric gauge and length	Imperial gauge and length		
Zinc finish				
3740026	3 x 13mm	4 x 1/2"	200	1000
3740040	3 x 20mm	4 x 3/4"	200	1000
3740088	3.5 x 13mm	6 x 1/2"	200	1000
3740095	3.5 x 15mm	6 x 5/8"	200	1000
3740101	3.5 x 20mm	6 x 3/4"	200	1000
3740118	3.5 x 25mm	6 x 1"	200	1000
3740125	3.5 x 30mm	6 x 1 1/4"	200	1000
3740132	3.5 x 40mm	6 x 1 1/2"	200	1000
3740179	4 x 15mm	8 x 5/8"	200	1000
3740187	4 x 20mm	8 x 3/4"	200	1000
3740194	4 x 25mm	8 x 1"	200	1000
3740197	4 x 30mm	8 x 1 1/4"	200	1000
3740198	4 x 35mm	8 x 1 3/8"	200	1000
3740137	4 x 40mm	8 x 1 1/2"	200	1000
3740140	4 x 45mm	8 x 1 3/4"	200	1000
3740141	4 x 50mm	8 x 2"	200	1000
3740142	4 x 60mm	8 x 2 1/2"	200	1000
3740143	4 x 70mm	8 x 2 3/4"	200	1000
3740144	5 x 20mm	10 x 3/4"	200	1000
3740145	5 x 30mm	10 x 1 1/4"	200	1000
3740146	5 x 40mm	10 x 1 1/2"	200	1000
3740148	5 x 50mm	10 x 2"	200	1000
3740152	5 x 60mm	10 x 2 1/2"	100	1000
3740153	5 x 70mm	10 x 2 3/4"	100	1000
3740151	5 x 75mm	10 x 3"	100	1000
3740158	5 x 100mm	10 x 4"	100	1000

Screw fixings



Combi roundhead screws

- Available with a bright zinc plated finish on hardened steel
- Combination head can be used with slotted or pozi screwdriver
- Single thread provides excellent grip in many materials

Product code	Description	Pack quantity	Minimum order unit
3743182	3 x 13mm	200	1000
3743183	3 x 15mm	200	1000
3743184	3 x 20mm	200	1000
3743185	3 x 25mm	200	1000
3743368	3.5 x 13mm	200	1000
3743180	3.5 x 15mm	200	1000
3743192	3.5 x 20mm	200	1000
3743193	3.5 x 25mm	200	1000
3743194	3.5 x 30mm	200	1000
3743195	3.5 x 40mm	200	1000
3743187	4 x 13mm	200	1000
3743188	4 x 15mm	200	1000
3743190	4 x 20mm	200	1000
3743191	4 x 25mm	200	1000
3743207	4 x 30mm	200	1000
3743215	4 x 40mm	200	1000
3743220	4 x 50mm	200	1000
3743222	5 x 20mm	200	1000
3743337	5 x 25mm	200	1000
3743344	5 x 30mm	200	1000
3743351	5 x 40mm	200	1000
3743360	5 x 50mm	200	1000
3743365	5 x 60mm	100	1000
3743366	5 x 70mm	100	1000
3743367	5 x 75mm	100	1000



Stainless steel screws

- Solid A302 (A2) stainless steel
- Single thread design
- Pozi drive
- Countersunk head
- High resistance to corrosion

Product code	Description	Pack quantity	Minimum order unit
3743800	4 x 25mm	200	200
3743802	4 x 30mm	200	200
3743804	4 x 40mm	200	200
3743806	4 x 50mm	200	200
3743808	4 x 60mm	200	200
3743810	4 x 70mm	200	200
3743820	5 x 25mm	200	200
3743822	5 x 30mm	200	200
3743824	5 x 40mm	200	200
3743826	5 x 50mm	200	200
3743828	5 x 60mm	100	100
3743830	5 x 70mm	100	100
3743832	5 x 80mm	100	100
3743834	5 x 90mm	100	100
3743836	5 x 100mm	100	100
3743840	6 x 40mm	100	100
3743842	6 x 50mm	100	100
3743844	6 x 60mm	100	100
3743846	6 x 70mm	100	100
3743848	6 x 80mm	100	100
3743850	6 x 90mm	100	100
3743852	6 x 100mm	100	100

Screw fixings

Decking screws



- 1,000 hours salt spray tested
- Ideal for decking, fencing and exterior applications
- Double countersunk head
- Pozi drive
- Sharp point, coarse thread
- Green coating to match timber

Product code	Description	Pack quantity	Minimum order unit
3743860	4 x 50mm	200	200
3743861	4 x 60mm	200	200
3743862	4 x 70mm	100	100
3743863	5 x 80mm	100	100
3743864	5 x 90mm	100	100

Roundhead wood screws



- Suitable for wood, plastic and nylon wall plugs
- Through hardened and zinc plated finish
- Sharp gimlet point

Product code	Description	Pack quantity	Minimum order unit
3737507	8 x 1"	200	200
3737506	8 x 1¼"	200	200
3737505	8 x 1½"	200	200
3737508	8 x 2"	200	200

Brass wood screws



- Available with slotted or recessed heads
- Manufactured from non-corrosive solid brass with sharp gimlet point
- Suitable for wood, plastic and nylon plugs

Product code	Description	Pack quantity	Minimum order unit
Recessed			
3739026	4 x ½"	200	200
3739033	4 x ⅝"	200	200
3739057	4 x 1"	200	200
3739125	6 x ¾"	200	200
3739132	6 x 1"	200	200
3739149	6 x 1¼"	200	200
3739156	6 x 1½"	200	200
3739194	7 x 1"	200	200
3739200	7 x 1¼"	200	200
3739255	8 x ¾"	200	200
3739262	8 x 1"	200	200
3739279	8 x 1¼"	200	200
3739286	8 x 1½"	200	200
3739309	8 x 2"	200	200
3739354	10 x 1"	200	200
3739361	10 x 1¼"	200	200
3739378	10 x 1½"	200	200
3739392	10 x 2"	200	200
3739415	10 x 2½"	100	100
3739422	10 x 3"	100	100

Screw fixings



Brass wood screws

- Available with slotted or recessed heads
- Manufactured from non-corrosive solid brass with sharp gimlet point
- Suitable for wood, plastic and nylon plugs

Product code	Description	Pack quantity	Minimum order unit
Slotted			
3701313	4 x 1/2"	200	200
3701337	4 x 5/8"	200	200
3701344	4 x 3/4"	200	200
3701368	4 x 1"	200	200
3701513	6 x 3/4"	200	200
3701521	6 x 1"	200	200
3701539	6 x 1 1/4"	200	200
3701547	6 x 1 1/2"	200	200
3701554	7 x 1"	200	200
3701588	8 x 3/4"	200	200
3701596	8 x 1"	200	200
3701604	8 x 1 1/4"	200	200
3701612	8 x 1 1/2"	200	200
3701620	8 x 2"	200	200
3701624	8 x 2 1/2"	200	200
3701638	10 x 1"	200	200
3701642	10 x 1 1/4"	200	200
3701646	10 x 1 1/2"	200	200
3701650	10 x 1 3/4"	200	200
3701653	10 x 2"	200	200
3701661	10 x 2 1/2"	100	100
3701687	12 x 2 1/2"	100	100

Brass pan head machine screws

- Suitable for many electrical installations
- Manufactured from solid brass material



Product code	Description	Pack quantity	Minimum order unit
3747113	M4 x 6mm	100	100
3747120	M4 x 8mm	100	100
3747137	M4 x 10mm	100	100
3747144	M4 x 12mm	100	100
3747151	M4 x 16mm	100	100
3747168	M4 x 20mm	100	100
3747175	M4 x 25mm	100	100
3747182	M4 x 30mm	100	100
3747199	M4 x 35mm	100	100
3747205	M4 x 40mm	100	100
3747212	M4 x 50mm	50	50
3747717	M4 Brass fullnuts	100	100
3747755	M4 Brass washers	100	100

Screw fixings



Raised head machine screws

- Suitable for socket boxes, switches etc
- Bright zinc plated finish

Product code	Description	Pack quantity	Minimum order unit
3746130	M3.5 x 25mm	100	100
3746154	M3.5 x 35mm	100	100
3746161	M3.5 x 40mm	100	100
3746178	M3.5 x 50mm	100	100
3746104	M3.5 x 50mm electroplated brass	100	100
3746192	M3.5 x 75mm	50	50
3747758	M3.5 x 35mm extension stud	100	100



Roofing nuts and bolts

- Suitable for many electrical installations
- Double slotted head with square nut
- Bright zinc plated finish

Product code	Description	Pack quantity	Minimum order unit
3750050	M6 x 12mm	200	200
3750060	M6 x 16mm	200	200
3750070	M6 x 20mm	200	200
3750080	M6 x 25mm	200	200
3750090	M6 x 30mm	200	200
3750100	M6 x 40mm	100	100
3750110	M6 x 50mm	100	100



Penny washers

- Bright zinc plated finish

Product code	Description	Pack quantity	Minimum order unit
3750056	M6 x 25mm steel zinc plated penny washer	100	100
3750057	M8 x 25mm steel zinc plated penny washer	100	100
3750058	M10 x 25mm steel zinc plated penny washer	100	100

Screw fixings



Drywall screws

- Bugle head with phillips recess, fine thread or coarse
- Available with grey phosphate or zinc plated finish
- Suitable for plasterboard, fibreboard, partitions and suspended ceilings

Product code	Description	Pack quantity	Minimum Order Unit
Fine thread - grey phosphate			
3746125	3.5 x 25mm	1000	1000
3746132	3.5 x 32mm	1000	1000
3746138	3.5 x 38mm	1000	1000
3746142	3.5 x 42mm	1000	1000
3746145	3.5 x 45mm	1000	1000
3746105	3.5 x 50mm	500	500
3746155	3.5 x 55mm	500	500
3746160	3.5 x 60mm	500	500
3746651	4.2 x 65mm	500	500
3746751	4.2 x 75mm	500	500
3746752	4.2 x 100mm	250	250
Fine thread - zinc plated			
3745025	3.5 x 25mm	1000	1000
3745032	3.5 x 32mm	1000	1000
3745038	3.5 x 38mm	1000	1000
3745042	3.5 x 42mm	1000	1000
3745045	3.5 x 45mm	1000	1000
3745050	3.5 x 50mm	500	500
3745055	3.5 x 55mm	500	500
3745060	3.5 x 60mm	500	500
3745065	4.2 x 65mm	500	500
3745075	4.2 x 75mm	500	500
3745066	4.2 x 100mm	250	250
Coarse thread - grey phosphate			
3746308	3.9 x 32mm	1000	1000
3746310	3.9 x 35mm	1000	1000
3746012	3.9 x 38mm	1000	1000
3746314	3.9 x 45mm	1000	1000
3746316	3.9 x 50mm	500	500
3746318	3.9 x 55mm	500	500

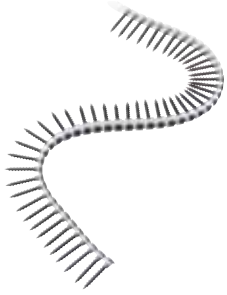
Self drilling drywall screws

- Self drilling version for heavy duty applications
- Bugle head with phillips recess

Product code	Description	Pack quantity	Minimum Order Unit
3745210	3.5 x 25mm	1000	1000
3745212	3.5 x 32mm	1000	1000
3745214	3.5 x 38mm	1000	1000
3745216	3.5 x 42mm	1000	1000
3745218	3.5 x 50mm	1000	1000
3745230	4.2 x 65mm	500	500
3745232	4.2 x 75mm	500	500
3745400	4.2 x 13mm wafer head	1000	1000
3745405	4.2 x 13mm pan head	1000	1000



Screw fixings



Collated drywall screws

- Bugle head with phillips recess
- Fits popular makes of collated screw gun
- Thread: coarse - timber fine - steel

Product code	Description	Pack quantity	Minimum Order Unit
Grey phosphate			
3746770	3.5 x 25mm fine	1000	1000
3746772	3.5 x 35mm fine	1000	1000
3746774	3.9 x 25mm coarse	1000	1000
3745223	3.9 x 32mm coarse	1000	1000
3746782	3.9 x 35mm coarse	1000	1000
3746784	3.9 x 41mm coarse	1000	1000
3746783	3.9 x 45mm coarse	1000	1000
3746156	3.9 x 50mm coarse	1000	1000
3746786	3.9 x 55mm coarse	1000	1000
Zinc plated			
3746900	3.5 x 25mm fine	1000	1000
3746902	3.5 x 35mm fine	1000	1000
3746906	3.9 x 35mm coarse	1000	1000
3746908	3.9 x 41mm coarse	1000	1000
3746912	3.9 x 55mm coarse	1000	1000



Steel to steel self drilling screws

- Hexagon washer headed self drilling screws
- Drills and fastens in one operation
- 5/16" hexagonal head
- Available with 16 and 19mm EDPM bonded washers
- 3mm thick bonding reduces the likelihood of leaks
- High thread screws provide a secure fix through insulation

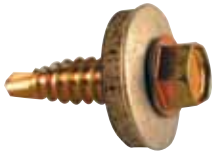
Product code	Description	Pack quantity	Minimum Order Unit
Light section 16mm bonded washer - maximum thickness 3.5mm			
3752260	5.5 x 25mm 3pt	100	100
3752265	5.5 x 32mm 3pt	100	100
3752270	5.5 x 38mm 3pt	100	100
3752275	5.5 x 50mm 3pt	100	100
Light section 19mm bonded washer - maximum thickness 3.5mm			
3752261	5.5 x 25mm 3pt	100	100
3752266	5.5 x 32mm 3pt	100	100
3752271	5.5 x 38mm 3pt	100	100
3752276	5.5 x 50mm 3pt	100	100
Heavy section 16mm bonded washer - maximum thickness 12.5mm			
3752210	5.5 x 22mm 4pt	100	100
3752215	5.5 x 32mm 5pt	100	100
3752220	5.5 x 40mm 5pt	100	100
3752225	5.5 x 60mm 5pt	100	100
3752230	5.5 x 80mm 5pt	100	100
3752235	5.5 x 100mm 5pt	100	100
Heavy section 19mm bonded washer - maximum thickness 12.5mm			
3752216	5.5 x 32mm 5pt	100	100
3752221	5.5 x 40mm 5pt	100	100
3752226	5.5 x 60mm 5pt	100	100
3752231	5.5 x 80mm 5pt	100	100
3752236	5.5 x 100mm 5pt	100	100

Screw fixings



Washerless steel to steel screws

Product code	Description	Pack quantity	Minimum order unit
Light section - 3.5mm maximum thickness			
3752290	5.5 x 25mm 3pt	100	100
3752292	5.5 x 32mm 3pt	100	100
3752294	5.5 x 38mm 3pt	100	100
3752296	5.5 x 50mm 3pt	100	100
Heavy section - 12.5mm maximum thickness			
3752250	5.5 x 22mm 4pt	100	100
3752252	5.5 x 32mm 5pt	100	100
3752254	5.5 x 40mm 5pt	100	100



Reduced point stitching screws

■ Ideal for joining thin metal sheets

Product code	Description	Pack quantity	Minimum order unit
3752410	6.3 x 25mm 16mm washer	100	100
3752411	6.3 x 25mm 19mm washer	100	100



Gash point screws

■ Ideal for fixing sheet and cladding materials to timber frames, re-roofing, barns etc.

■ Washers have 3mm bonding, reducing the likelihood of leaks

■ 16 or 19mm washers

■ $\frac{5}{16}$ " hexagonal head

■ 1.5 - 4mm maximum thickness

Product code	Description	Pack quantity	Minimum order unit
3752110	6.3 x 32mm 16mm washer	50	50
3752111	6.3 x 32mm 19mm washer	50	50
3752115	6.3 x 45mm 16mm washer	50	50
3752116	6.3 x 45mm 19mm washer	50	50



Magnetic sockets

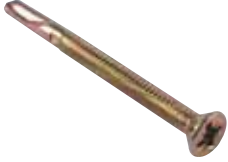
■ Fits most leading brands of electric screwdrivers

Product code	Description	Pack quantity	Minimum order unit
3752000	Hex size $\frac{5}{16}$ " - 6.3mm screw diameter	5	5

Screw fixings

Timber to steel self drilling screws

- Wings ream clearance hole to prevent material jacking
- Ribbed head aids self embedment
- Tight clamping action
- Suitable for fixing mezzanine floors, firelining, chipboard, roof and floor sheets to steelwork
- Automotive coachbuilding bodywork application



Product code	Description	Pack quantity	Minimum order unit
Light section - 1.5 - 4mm maximum thickness			
3752560	5.5 x 40mm 3pt	100	100
3752565	5.5 x 60mm 3pt	100	100
3752570	5.5 x 80mm 3pt	100	100
3752575	5.5 x 100mm 3pt	100	100
3752580	5.5 x 110mm 3pt	100	100
Heavy section - 12mm maximum thickness			
3752510	5.5 x 50mm 5pt	100	100
3752515	5.5 x 60mm 5pt	100	100
3752520	5.5 x 70mm 5pt	100	100
3752525	5.5 x 85mm 5pt	100	100
3752530	5.5 x 109mm 5pt	100	100

Masonry screws

- Suitable for rapid anchoring directly into most masonry materials
- Available in countersunk or hexagon heads
- No wall plug required



Product code	Description	Pack quantity	Minimum order unit
Countersunk phillips head			
3703210	4.8 x 32mm	100	100
3703215	4.8 x 45mm	100	100
3703220	4.8 x 57mm	100	100
3703225	4.8 x 70mm	100	100
3703230	4.8 x 82mm	100	100
3703235	4.8 x 100mm	100	100
3703260	6.3 x 57mm	100	100
3703265	6.3 x 70mm	100	100
3703275	6.3 x 100mm	100	100
3703280	6.3 x 125mm	100	100
Hexagon head			
3703065	6.3 x 70mm hex size $\frac{5}{16}$ "	100	100

Nails and pins

Masonry nails

- Suitable for fixing into brick, block and concrete
- C1075 grade steel, through hardened to 50 - 54 HRC and bright zinc plated
- Available in light, medium and heavy gauge
- Zinc plated finish



Product code	Description	Pack quantity	Minimum order unit
Light gauge 2.5mm diameter			
3790000	25mm	100	100
3790002	30mm	100	100
3790004	35mm	100	100
3790006	40mm	100	100
3790093	45mm	100	100
3790010	50mm	100	100
3790014	60mm	100	100
Medium gauge 3mm diameter			
3790030	25mm	100	100
3790032	30mm	100	100
3790034	35mm	100	100
3790036	40mm	100	100
3790038	45mm	100	100
3790040	50mm	100	100
3790044	60mm	100	100
3790046	65mm	100	100
3790048	70mm	100	100
3790050	75mm	100	100
3790094	80mm	100	100
Heavy gauge 3.5mm diameter			
3790062	30mm	100	100
3790064	35mm	100	100
3790066	40mm	100	100
3790068	45mm	100	100
3790070	50mm	100	100
3790074	60mm	100	100
3790091	65mm	100	100
3790078	70mm	100	100
3790092	75mm	100	100
3790082	80mm	100	100
3790086	90mm	100	100
3790090	100mm	100	100
Capping nails			
3790204	2.5 x 25mm	100	100
3790207	2.5 x 30mm	100	100
3790208	2.5 x 35mm	100	100
Dome head nails			
3743865	2.5 x 18mm	250	250



Cable ties



Cable ties - TCT

- Suitable for a wide range of applications including cable harnessing and cable fastening
- Manufactured from either natural or black 6.6 grade nylon

Product code	Description	Pack quantity	Minimum order unit
Natural			
2400026	100 x 2.5mm	100	100
2400064	150 x 3.6mm	100	100
2400149	200 x 3.6mm	100	100
2400101	200 x 4.6mm	100	100
2400123	250 x 4.8mm	100	100
2400187	300 x 4.8mm	100	100
2400248	370 x 4.8mm	100	100
2400286	380 x 7.6mm	100	100
Black			
2400033	100 x 2.5mm	100	100
2400071	150 x 3.6mm	100	100
2400156	200 x 3.6mm	100	100
2400118	200 x 4.6mm	100	100
2400124	250 x 4.8mm	100	100
2400194	300 x 4.8mm	100	100
2400255	370 x 4.8mm	100	100
2400293	380 x 7.6mm	100	100



Cable tie plug

- A quick and easy way of fixing pipes or cables by means of a cable tie
- Drill a 6mm hole, hammer in the fixing and insert the cable tie

Product code	Description	Pack quantity	Minimum order unit
55CTP640B100	6 x 40mm (6mm drill)	100	1 bag

Fixing bands and grommets



Fixing bands

- All banding is suitable for suspended installations and anchoring in electrical, building, heating and ventilation installations
- Easy to cut and shape

Product code	Description	Pack quantity	Minimum order unit
Straight edge fixing band - TGB			
2705110	12 x 0.7mm (10m)	1	1
2705310	20 x 0.7mm (25m)	1	1
2705320	20 x 1mm (10m)	1	1
2705410	25 x 1.2mm (25m)	1	1
2705420	25 x 2mm (10m)	1	1
Configuration 8 galvanised fixing band - TAG			
2700610	12 x 0.7mm (10m)	1	1
2700630	17 x 0.7mm (10m)	1	1
2700650	26 x 1mm (10m)	1	1
Straight edge universal fixing band - TUB			
2703015	8 white (10m)	1	1
2703023	8 grey (10m)	1	1
2704013	12 white (10m)	1	1
2704063	12 black (10m)	1	1
2704054	12 orange (10m)	1	1
Configuration 8 plastic coated fixing band - TAP			
2700510	12 x 0.7mm black (10m)	1	1
2700511	12 x 0.7mm white (10m)	1	1
2700513	12 x 0.7mm red (10m)	1	1
2700530	17 x 0.7mm black (10m)	1	1
2700531	17 x 0.7mm white (10m)	1	1
2700533	17 x 0.7mm red (10m)	1	1
Configuration 8 copper fixing band - TAC			
2700710	12 x 0.9mm (10m)	1	1



PVC cable grommets

- Designed to prevent cable chafing through trunking and electrical boxes
- Available in standard and quick fit designs

Product code	Description	Pack quantity	Minimum order unit
Standard type			
3280210	20mm open	100	100
3280215	20mm closed	100	100
3280220	25mm open	50	50
3280225	25mm closed	50	50
Quick fit type			
3280010	20mm open	100	100
3280015	20mm closed	100	100
3280020	25mm open	50	50
3280035	25mm closed	50	50

Compression grommets - TET

- Designed to completely seal against dust and water to IP67
- Wide sealing range for each size of product
- Available in grey EPDM and black chloroprene materials



Product code	Description	Pack quantity	Minimum order unit
IMT36179	3 - 5 EPDM	50	50
IMT36180	5 - 7 EPDM	50	50
IMT37303	7 - 10 EPDM	50	50
IMT37307	10 - 14 EPDM	50	50
IMT37311	14 - 20 EPDM	50	50
IMT37314	20 - 26 EPDM	25	25
IMT37304	7 - 10 chloroprene	50	50
IMT37308	10 - 14 chloroprene	50	50

Cleats

Tough cable backup

A wide range of popular industrial installation accessories for clamping, tying and terminating armoured and unarmoured cables

Heavy duty cable cleats

- Colour: black
- LDPP (Low Density Polyolefin)
- High strength
- Corrosion resistant
- High impact resistance
- UV light resistant
- Stable at temperatures -35°C to +85°C

LDPP - single hole heavy duty



Product code	Description	Pack quantity	Minimum order unit
MS3	7.6mm	50	50
MS4	10.2mm	50	50
MS5	12.7mm	50	50
MS6	15.2mm	50	50
MS7	17.0mm	50	50
MS8	20.3mm	50	50
MS9	22.8mm	50	50
MS10	25.4mm	50	50
MS11	27.7mm	20	20
MS12	30.4mm	20	20
MS14	35.6mm	20	20
MS16	40.6mm	20	20
MS18	45.7mm	20	20
MS20	50.8mm	20	20

MS13 also available to special order

LDPP - two hole heavy duty



Product code	Description	Pack quantity	Minimum order unit
MT9	57.1mm	5	5
MT10	63.5mm	5	5
MT11	69.8mm	5	5
MT12	76.2mm	5	5
MT14	82.5mm	5	5
MT15	105mm	5	5

LSF low smoke and fume polypropylene

- Non-Drip to UL94-VO
- Rapid flame extinction
- Low smoke emission, halogen and heavy metal free



JEM 2-part clamps polypropylene

Product code	Description	Pack quantity	Minimum order unit
MJ2	Cable dia. 50 – 75mm	5	5

Industrial enclosures and glands



Wall mounted industrial enclosures

- M Series - thermoplastic IP56
- Colour: grey

Product code	Description	Pack quantity	Minimum order unit
M101005	100 x 100 x 50mm	1	1
M130806	130 x 80 x 55mm	1	1
M151107	150 x 110 x 70mm	1	1
M181407	180 x 140 x 70mm	1	1
M241808	240 x 180 x 85mm	1	1



Dome top glands

- C/W locknuts IP68 submersible zero halogen
- Colour: black/white/red

Product code	Description	Cable dia.	Pack quantity	Minimum order unit
MP16DW	16mm white	5 - 10mm	50	50
MP16DB	16mm black	5 - 10mm	50	50
MP20DW	20mm S white	6 - 12mm	50	50
MP20DB	20mm S black	6 - 12mm	50	50
MP20DR	20mm S red	6 - 12mm	50	50
MP202DW	20mm white	10 - 14mm	50	50
MP202DB	20mm black	10 - 14mm	50	50
MP202DR	20mm red	10 - 14mm	50	50
MP25DW	25mm white	13 - 18mm	25	25
MP25DB	25mm black	13 - 18mm	25	25
MP32DW	32mm white	18 - 25mm	20	20
MP32DB	32mm black	18 - 25mm	20	20

Glands



Nylon glands zero halogen nylon – for unarmoured cables type A

Product code	Description	Cable dia.	Pack quantity	Minimum order unit
Gland kits				
MPL20W	20mm S white	7 - 10.5mm	10	10
MPL20B	20mm S black	7 - 10.5mm	10	10
MPL20R	20mm S red	7 - 10.5mm	10	10
MPL202B	20mm L black	8 - 13mm	10	10
Glands only				
MP10B	10mm black	5 - 7mm	100	100
MP16W	16mm white	7 - 10.5mm	100	100
MP16B	16mm black	7 - 10.5mm	100	100
MP20W	20mm S white	7 - 10.5mm	100	100
MP20B	20mm S black	7 - 10.5mm	100	100
MP20R	20mm S red	7 - 10.5mm	100	100
MP202W	20mm L white	8 - 13mm	100	100
MP202B	20mm L black	8 - 13mm	100	100
MP202R	20mm L red	8 - 13mm	100	100
MP25W	25mm S white	8 - 13mm	100	100
MP25B	25mm S black	8 - 13mm	100	100
MP25R	25mm S red	8 - 13mm	100	100
MP252W	25mm L white	12 - 18mm	100	100
MP252B	25mm L black	12 - 18mm	100	100
MP32W	32mm S white	18 - 24.5mm	50	50
MP40W	40mm S white	22 - 27mm	10	10
MP40B	40mm S black	22 - 27mm	10	10
Lock nuts only				
ML10B	10mm black	5 - 7mm	100	100
ML16W	16mm white	7 - 10.5mm	100	100
ML16B	16mm black	7 - 10.5mm	100	100
ML20W	20mm S white	7 - 10.5mm	100	100
ML20B	20mm S black	7 - 10.5mm	100	100
ML20R	20mm S red	7 - 10.5mm	100	100
ML25W	25mm S white	8 - 13mm	100	100
ML25B	25mm S black	8 - 13mm	100	100
ML25R	25mm S red	8 - 13mm	100	100
ML32W	32mm S white	18 - 24.5mm	50	50
ML40W	40mm S white	22 - 27mm	25	25
ML50B	50mm S black	38 - 41mm	25	25

Brass bushes

■ Colour: natural



Product code	Description	Pack quantity	Minimum order unit
MBM20S	20mm short male	10	10
MBM25S	25mm short male	10	10
MBM32S	32mm short male	10	10
MBM15S	1.5" short male	10	10
MBM20L	20mm long male	10	10
MBM25L	25mm long male	10	10
MBM32L	32mm long male	10	10

Glands and shrouds



LSF cable gland kits

Product code	Description	Pack quantity	Minimum order unit
LBW20SK	20mm S	2	2
LBW20K	20mm	2	2
LBW25K	25mm	2	2
LBW32K	32mm	2	2
LBW40K	40mm	1	1
LBW50K	50mm	1	1
LBW63K	63mm	1	1

IP rated

LCW20SK	20mm S	2	2
LCW20K	20mm	2	2
LCW25K	25mm	2	2
LCW32K	32mm	2	2
LCW40K	40mm	1	1
LCW50K	50mm	1	1
LCW63K	63mm	1	1

Brass BW cable gland kits – 2 part

- These armoured cable gland kits contain gland, locknut, earth tag and shroud
- Sizes 20mm S to 32mm contain two of each



Product code	Description	Pack quantity	Minimum order unit
MBW20SK	20mm S	2	2
MBW20K	20mm	2	2
MBW25K	25mm	2	2
MBW32K	32mm	2	2
MBW40K	40mm	1	1
MBW50K	50mm	1	1
MBW63K	63mm	1	1

Brass BW cable gland kits – 3 part

- These armoured cable gland kits contain gland, locknut, earth tag and shroud
- Sizes 20mm S to 32mm contain two of each



Product code	Description	Pack quantity	Minimum order unit
3BW20SK	20mm S	2	2
3BW20K	20mm	2	2
3BW25K	25mm	2	2
3BW32K	32mm	2	2
3BW40K	40mm	1	1
3BW50K	50mm	1	1
3BW63K	63mm	1	1

Brass CW cable gland kits

- These armoured cable gland kits contain gland, locknut, earth tag and shroud
- Sizes 20mm S to 32mm contain two of each



Product code	Description	Pack quantity	Minimum order unit
MCW20SK	20mm S	2	2
MCW20K	20mm	2	2
MCW25K	25mm	2	2
MCW32K	32mm	2	2
MCW40K	40mm	1	1
MCW50K	50mm	1	1
MCW63K	63mm	1	1

Shrouds only

Product code	Description	Pack quantity	Minimum order unit
SH20S	20mm S	1	1
SH20	20mm	1	1
SH25	25mm	1	1
SH32	32mm	1	1



Cable clips

Thorsman cable clips premium - TC

- For use in wood, masonry and compressed board
- Flexible design for use with various cable sizes
- Manufactured from impact resistant polypropylene with a hardened, plated nail
- Full colour printed boxes
- Comprehensive range



Product code	Description	Pack quantity	Minimum order unit
Round clips			
2001008	TC 2 - 3 clear, telephone - 2 pair	100	1000
2011005	TC 3 - 5 clear, telephone - 4 pair	100	1000
2011017	TC 3 - 5 white, telephone - 4 pair	100	1000
2011021	TC 3 - 5 grey, telephone - 4 pair	100	1000
2022009	TC 5 - 7 clear, 2 core flexible	100	1000
2022010	TC 5 - 7 white, 2 core flexible	100	1000
2022039	TC 5 - 7 grey, 2 core flexible	100	1000
2022029	TC 5 - 7 black, 2 core flexible	100	1000
2032011	TC 7 - 10 white, 3 core flexible	100	1000
2032041	TC 7 - 10 black, co-axial	100	1000
2032091	TC 7 - 10 brown, co-axial	100	1000
2032061	TC 7 - 10 red, co-axial	100	1000
2041200	TC 8 - 12 white, co-axial	100	1000
2041259	TC 8 - 12 grey	100	1000
2042011	TC 10 - 14 white	100	1000
2042021	TC 10 - 14 grey	100	1000
2042041	TC 10 - 14 black	100	1000
2052011	TC 14 - 20 white	100	1000
2052051	TC 14 - 20 black	100	1000
2060002	TC 18 - 22 white	50	500
2060135	TC 18 - 22 black	50	500
2070209	TC 22 - 26 white	50	500
2070134	TC 22 - 26 black	50	500
Flat clips			
2101004	TC 2 x 4 clear, bell wire	100	1000
2106003	TC 3 x 5 clear, 2812X	100	1000
2111003	TC 4 x 6 clear, 3219Y	100	1000
2111029	TC 4 x 6 grey, 3192Y	100	1000
2116010	TC 5 x 8 white, 1 and 1.5mm ² T&E	100	1000
2116028	TC 5 x 8 grey, 1 and 1.5mm ² T&E	100	1000
2126019	TC 6 x 10 white, 2.5mm ² T&E	100	1000
2126027	TC 6 x 10 grey, 2.5mm ² T&E	100	1000
2131019	TC 7 x 14 white, 4 and 6mm ² T&E	100	1000
2131027	TC 7 x 14 grey, 4 and 6mm ² T&E	100	1000
2136018	TC 9 x 18 white, 10 and 16mm ² T&E	100	1000
2136026	TC 9 x 18 grey, 10 and 16mm ² T&E	100	1000
2137014	TC 11 x 22 white	100	500
Double flat clips			
2141026	TCD 5 x 8 grey, 2 x 1 and 1.5mm ² T&E	100	1000
2146017	TCD 6 x 10 white, 2 x 2.5mm ² T&E	100	1000
2146025	TCD 6 x 10 grey, 2 x 2.5mm ² T&E	100	1000



Cable clips

Thorsman cable clips standard - TCA

- For use in wood, masonry and compressed board
- Flexible design for use with various cable sizes
- Manufactured from impact resistant polypropylene with a hardened, plated nail
- Packed in plain white boxes
- Concise range



Product code	Description	Pack quantity	Minimum order unit
Round clips			
2201000A	TCA 3 - 5 clear, telephone - 4 pair	100	1000
2201001A	TCA 3 - 5 white, telephone - 4 pair	100	1000
2202011A	TCA 5 - 7 clear, 2 core flexible	100	1000
2202000A	TCA 5 - 7 white, 2 core flexible	100	1000
2202005A	TCA 5 - 7 black, 2 core flexible	100	1000
2203000A	TCA 7 - 9 white, 3 core flexible	100	1000
2203002A	TCA 7 - 9 black, co-axial	100	1000
2203004A	TCA 7 - 9 brown, co-axial	100	1000
2203005A	TCA 7 - 9 red, co-axial	100	1000
2205000A	TCA 10 - 13 white	100	1000
2205002A	TCA 10 - 13 black	100	1000
2206000A	TCA 14 - 20 white	100	1000
2206002A	TCA 14 - 20 black	100	1000
Flat clips			
2210000A	TCA 2 x 4 clear, bell wire	100	1000
2211000A	TCA 3 x 5 clear, 2812Y	100	1000
2212000A	TCA 4 x 6 clear, 3192Y	100	1000
2213000A	TCA 5 x 8 white, 1 and 1.5mm ² T&E	100	1000
2213001A	TCA 5 x 8 grey, 1 and 1.5mm ² T&E	100	1000
2214000A	TCA 6 x 10 white, 2.5mm ² T&E	100	1000
2214001A	TCA 6 x 10 grey, 2.5mm ² T&E	100	1000
2215000A	TCA 7 x 14 white, 4 and 6mm ² T&E	100	1000
2215001A	TCA 7 x 14 grey, 4 and 6mm ² T&E	100	1000



Tower round plus clips

- Tower is a comprehensive range of high quality plastic clips to accommodate a wide selection of cable diameters. The hardened steel pins are made from a high carbon steel, heat-treated, then electro zinc plated



Product code	Description	Pack quantity	Minimum order unit
77CB04P	4 - 5mm black	200	10 boxes
77CW04P	4 - 5mm white	200	10 boxes
77CB05P	5 - 6mm black	100	10 boxes
77CW05P	5 - 6mm white	100	10 boxes
77CB06P	6 - 7mm black	100	10 boxes
77CW06P	6 - 7mm white	100	10 boxes
77CB07P	7 - 8mm black	100	10 boxes
77CW07P	7 - 8mm white	100	10 boxes
77CB09P	9 - 11mm black	100	10 boxes
77CW09P	9 - 11mm white	100	10 boxes
77CB12PAC	12 - 14mm black	100	10 boxes
77CW12PAC	12 - 14mm white	100	10 boxes
77CB15PAC	15 - 18mm black	100	10 boxes
77CW15P	15 - 18mm white	100	10 boxes
77CB19P	19 - 24mm black	50	10 boxes
77CW19P	19 - 24mm white	50	10 boxes
77CB25P	25 - 28mm black	50	10 boxes
77CW25P	25 - 28mm white	50	10 boxes

Cable clips



Tower round plus clips - red

■ Ideal for fire and security installations

Product code	Description	Pack quantity	Minimum order unit
77CR06P	6 - 7mm	100	10 boxes
77CR07P	7 - 8mm	100	10 boxes
77CR09P	9 - 11mm	100	10 boxes



Tower flat plus clips - twin and earth

■ Tower plus clips feature a return 'hook' that holds cables tightly

■ This 'clip with a grip' is ideal for use in computer and communication installations where cables may vary in size

■ Tower plus clips are manufactured from a specially selected grade of UV stabilised polypropylene, which combines strength and elasticity

Product code	Description	Pack quantity	Minimum order unit
77CGPF1P	1/1.5mm ² 6242Y grey	100	100 boxes
77CGPF25P	2.5mm ² 6242Y grey	100	100 boxes
77CGPF4P	4/6mm ² 6242Y grey	100	10 boxes
77CGPF10P	10mm ² 6242Y grey	50	10 boxes



Tower TV cable and satellite clips

■ TV and satellite clips are manufactured from a specially selected grade of UV stabilised polypropylene, which combines strength and elasticity

Product code	Description	Pack quantity	Minimum order unit
72CB05P	5 - 6mm black, co-axial cable	100	10 boxes
72CT05P	5 - 6mm brown, co-axial cable	100	10 boxes
72CW05P	5 - 6mm white, co-axial cable	100	10 boxes
72CB06P	6 - 7mm black, co-axial cable	100	10 boxes
72CT06P	6 - 7mm brown, co-axial cable	100	10 boxes
72CW06P	6 - 7mm white, co-axial cable	100	10 boxes
72CB07P	7 - 8mm black, co-axial cable	100	10 boxes
72CT07P	7 - 8mm brown, co-axial cable	100	10 boxes
72CW07P	7 - 8mm white, co-axial cable	100	10 boxes
72CBKF40	Flat clips black	100	10 boxes
72CBKF60	Flat clips black	50	10 boxes



Tower flat clips - parallel twin

Product code	Description	Pack quantity	Minimum order unit
70CWPT	Bell wire white	100	10 boxes
70CWPM	0.50mm ² white, 2812X	100	10 boxes
70CWSM	0.75mm ² white, 3192Y	100	10 boxes

Cable clips



Tower flat clips - twin and earth

■ Supplied with electro-plated hardened steel nail

Product code	Description	Pack quantity	Minimum order unit
70CGKF10	1mm ² grey, 6242Y	100	100 boxes
70CGKF15	1.5mm ² grey, 6242Y	100	100 boxes
70CGKF25	2.5mm ² grey, 6242Y	100	100 boxes
70CGKF40	4mm ² grey, 6242Y	100	10 boxes
70CGKF60	6mm ² grey, 6242Y	100	10 boxes
70CGKF100	10mm ² grey, 6242Y	100	10 boxes
70CGKF160	16mm ² grey, 6242Y	100	10 boxes



Tower flat clips - three core and earth

Product code	Description	Pack quantity	Minimum order unit
70CG3CE	1mm ² and 1.5mm ² grey	100	10 boxes



Tower flat clips - double

Product code	Description	Pack quantity	Minimum order unit
70CGDKF15	1/1.5mm ² grey, 6242Y	100	10 boxes
70CGDKF25	2.5mm ² grey, 6242Y	100	10 boxes



Tower round clips

■ Designated sizes to match cable diameter

Product code	Description	Pack quantity	Minimum order unit
70CWRC275	2.75mm white	100	10 boxes
70CWRC35	3.5mm white	100	10 boxes
70CBRC4	4mm black	100	10 boxes
70CWRC4	4mm white	100	10 boxes
70CBRC5	5mm black	100	10 boxes
70CWRC5	5mm white	100	10 boxes
70CBRC6	6mm black	100	10 boxes
70CWRC6	6mm white	100	10 boxes
70CBRC7	7mm black	100	10 boxes
70CWRC7	7mm white	100	10 boxes
70CBRC8	8mm black	100	10 boxes
70CWRC8	8mm white	100	10 boxes
70CBRC9	9mm black	100	10 boxes
70CWRC9	9mm white	100	10 boxes
70CBRC10	10mm black	100	10 boxes
70CWRC10	10mm white	100	10 boxes
70CBRC11	11mm black	100	10 boxes
70CWRC11	11mm white	100	10 boxes
70CBRC12	12mm black	100	10 boxes
70CWRC12	12mm white	100	10 boxes
70CBRC14	14mm black	50	10 boxes
70CWRC14	14mm white	50	10 boxes
70CBRC16	16mm black	50	10 boxes
70CWRC16	16mm white	50	10 boxes



Cable and pipe fixings



Pin plug for cable clips

- The pin plug provides the ideal fixing in situations, where the substrate is too hard to take a masonry nail or cable clip
- Drill a 5mm hole and tap in the pin plug

Product code	Description	Pack quantity	Minimum order unit
55PP1	Grey 20mm (5mm drill)	100	1 box



Low smoke and fume clips and saddles

Clips for soft skin fire performance cables

- Copper clips with LSF coating - complies to:
BS 476. Part 6,
BS 476. Part 7,
BS 6853,
BS EN 60332,
UL 94 vertical burn test

Product code	Description	Pack quantity	Minimum order unit
Clips			
64LSF26R	6.5 - 6.9mm diameter red	50	1 pack
64LSF26W	6.5 - 6.9mm diameter white	50	1 pack
64LSF28R	7 - 7.4mm diameter red	50	1 pack
64LSF28W	7 - 7.4mm diameter white	50	1 pack
64LSF30R	7.5 - 7.9mm diameter red	50	1 pack
64LSF30W	7.5 - 7.9mm diameter white	50	1 pack
64LSF32R	8 - 8.4mm diameter red	50	1 pack
64LSF32W	8 - 8.4mm diameter white	50	1 pack
64LSF34R	8.5 - 9.2mm diameter red	50	1 pack
64LSF34W	8.5 - 9.2mm diameter white	50	1 pack
64LSF37R	9.3 - 10mm diameter red	50	1 pack
64LSF37W	9.3 - 10mm diameter white	50	1 pack
64LSF40R	10.1 - 10.7mm diameter red	50	1 pack
64LSF40W	10.1 - 10.7mm diameter white	50	1 pack
64LSF43R	10.8 - 11.7mm diameter red	50	1 pack
64LSF43W	10.8 - 11.7mm diameter white	50	1 pack
Saddles			
64LSF272R	6.3 - 6.9mm diameter red	50	1 pack
64LSF272W	6.3 - 6.9mm diameter white	50	1 pack
64LSF302R	7.0 - 7.7mm diameter red	50	1 pack
64LSF342R	7.8 - 9mm diameter red	50	1 pack
64LSF342W	7.8 - 9mm diameter white	50	1 pack



Self adhesive clips

- The ideal cable fixing where a nail-in application would be impossible or unacceptable

Product code	Description	Pack quantity	Minimum order unit
Standard clips			
65SA04W	Up to 4mm diameter	25	1 pack
65SA08W	Up to 8mm diameter	25	1 pack
65SA12W	Up to 12mm diameter	25	1 pack
Cable tie carrier			
65CT05B	Maximum width of cable tie 5mm	25	1 pack
65CT10B	Maximum width of cable tie 10mm	25	1 pack



Pipe accessories

Pipe clips and spacers



- Snap on type
- Screw fixed
- Interlocking facility enables joining of hinged clips
- Manufactured from polypropylene
- Can withstand temperatures of 80°C
- Spacers provide additional stand off distance from the wall for insulation materials
- Available for a wide range of heating pipe diameters

Product code	Description	Pack quantity	Minimum order unit
4304018	15mm single open	100	100
4304025	22mm single open	100	100
4304032	28mm single open	100	100
4304019	15mm double open	100	100
4304026	22mm double open	100	100
4301010	15mm single hinged	100	100
4301015	22mm single hinged	100	100
4301020	28mm single hinged	100	100
4301040	15mm double hinged	100	100
4301045	22mm double hinged	100	100
4301100	Microbore 8 - 10mm nail-in clips	100	100
2053015	15mm nail-in clips	100	100
78PCW10AC	White 10mm - 29mm nail	100	10 boxes

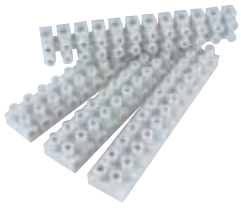
Pipe trunking - type TRL



- Cover designed to suit both plumbing and electrical installations
- Base clamps with ties, fixes the pipe or cable
- Cover snaps into place reducing risk of damage

Product code	Description	Pack quantity	Minimum order unit
5320100	56 x 30mm pipe cover	25m (10 lengths)	25m
5320210	76 x 40mm pipe cover	25m (10 lengths)	25m
5322010	56mm clamps and ties	50	50
5322160	56mm joint junction	100	100
5322110	56mm stop end	100	100
5322020	76mm clamps and ties	50	50
5322180	76mm joint junction	100	100
5322130	76mm stop end	100	100
5106010	8 - 10mm clip and cover clamp	50	50
5322465	15mm clip and cover clamp	50	50
5322470	22mm clip and cover clamp	50	50

Connectors and earth clamps



Terminal connectors

- The tough yet flexible polypropylene construction allows you snap off the desired amount of terminal blocks, removing the need for time consuming cutting.
- Terminal blocks are made from self extinguishing rigid white polypropylene, which eliminates the risk of fire from arcing.
- CE approved for use in working temperatures up to 85°C

Product code	Description	Pack quantity	Minimum order unit
Brass insert			
3000254	2.5 amp	10 strips	1 pack
3000270	5 amp	10 strips	1 pack
3000288	15 amp	10 strips	1 pack
3000296	30 amp	10 strips	1 pack
3000938	60 amp	5 strips	1 pack
Steel insert			
3000410	2.5 amp white	10 strips	1 pack
3000420	5 amp white	10 strips	1 pack
3000430	15 amp white	10 strips	1 pack
3000440	30 amp white	10 strips	1 pack



In-Line connector
(connector not included)

Chocbox

- The revolutionary connector cover that is safe and simple to use
- The solution to protecting and insulating electrical connections
- Chocbox is a connector cover (2 - 30amp), a junction box (fixed wiring) and a conduit box
- Tested to BS EN60598-1 (13.3.2), 850°C glow-wire

Product code	Description	Pack quantity	Minimum order unit
CHOCBOXTH	Thorsman chocbox connector box	200	200

Maximum capacities:

Connector size	With cordgrip	Without cordgrip
2 amp	8 pole	10 pole
5 amp	6 pole	8 pole
15 amp	4 pole	4 pole
30 amp	3 pole	3 pole



Data/Telecom



Junction box

Earth clamps

- Available to suit wet or dry conditions and a range of pipe diameters
- Designed to comply with BS951
- Manufactured with a brass or phosphor bronze body with phosphor bronze strap

Product code	Description	Pack quantity	Minimum order unit
3000952	ECL15 wet or dry use	20	20
3000956	ECL14 dry use	20	20
3000959	EC16 wet use	20	20
3000965	EC14/2 (200mm) dry use	20	20
3000969	EC15/2 (200mm) wet or dry use	20	20
3000971	EC15/3 (300mm) wet or dry use	20	20
21RCK10	Ezyerth standard clamp kit (for radiators)	10	1 pack



Tapes



PVC insulation tape

- Manufactured from flame retardant self extinguishing PVC to BS EN 60454
- Suitable for electrical insulation, binding, colour coding and general work
- Available in a range of sizes and colours

Product code	Description	Pack quantity	Minimum order unit
2420100	19mm x 20m red	8	8
2420101	19mm x 20m yellow	8	8
2420102	19mm x 20m blue	8	8
2420103	19mm x 20m black	8	8
2420104	19mm x 20m white	8	8
2420105	19mm x 20m yellow/green	8	8
2420106	19mm x 20m green	8	8
2420107	19mm x 20m brown	8	8
2420108	19mm x 20m grey	8	8
2420110	19mm x 33m red	8	8
2420111	19mm x 33m yellow	8	8
2420112	19mm x 33m blue	8	8
2420113	19mm x 33m black	8	8
2420114	19mm x 33m white	8	8
2420115	19mm x 33m yellow/green	8	8
2420116	19mm x 33m brown	8	8
2420117	19mm x 33m green	8	8
2420118	19mm x 33m grey	8	8
2420200	25mm x 33m red	6	6
2420201	25mm x 33m yellow	6	6
2420202	25mm x 33m blue	6	6
2420203	25mm x 33m black	6	6
2420204	25mm x 33m white	6	6
2420205	25mm x 33m yellow/green	6	6
2420300	50mm x 33m red	3	3
2420301	50mm x 33m yellow	3	3
2420302	50mm x 33m blue	3	3
2420303	50mm x 33m black	3	3
2420304	50mm x 33m white	3	3

Specialist tapes

- Specialist electrical tapes for extreme weather conditions
- Ducting tape available for general purpose sealing and binding or heating and ventilation uses
- Self amalgamating for protection against corrosion and providing watertight seals
- Gaffer tape, general purpose cloth tape for sealing and protecting



Product code	Description	Pack quantity	Minimum order unit
Self amalgamating			
2423000	Self amalgamating tape 19mm x 10m	1	1
2423100	Self amalgamating tape 25mm x 10m	1	1
Gaffer tape			
2424000	Gaffer tape 50mm x 50m silver	1	1
2424004	Gaffer tape 50mm x 50m black	1	1
Waterproof ducting tape			
2424005	Waterproof ducting dape 50mm x 50m	1	1
Underground warning tape			
25EC365	150mm x 365m yellow	1	1

Cable handling



PVC sleeving

- Sleeving is supplied in non-shrink PVC and is self extinguishing
- Earth sleeving is striped green/yellow

Product code	Description	Pack quantity	Minimum order unit
27GY2	Green/yellow 2mm	100m	1
27GY3	Green/yellow 3mm	100m	1
27GY4	Green/yellow 4mm	100m	1
27GY5	Green/yellow 5mm	100m	1
27GY6	Green/yellow 6mm	100m	1
27BN3	Brown 3mm	100m	1
27BN4	Brown 4mm	100m	1
27BU3	Blue 3mm	100m	1
27BU4	Blue 4mm	100m	1



Cable tidy poly packs (with applicator)

- Cable tidy is a revolutionary system that literally "zips" cables into place in seconds
- By using a simple applicator tool, the cable tidy gathers together all potentially hazardous cabling
- Further cables can be added along the whole length and when it's not needed, cable tidy can be quickly removed and stored for use at a later date

Product code	Description	Pack quantity	Minimum order unit
28CTBP15	15mm diameter black	2.5m	1
28CTBP15W	15mm diameter white	2.5m	1
28CTBP20	20mm diameter black	2.5m	1
28CTBP20W	20mm diameter white	2.5m	1

Hand tools

Torque Vario-S VDE screwdriver kit



- Ensure that electricians comply to 17th edition regulation 134.1.1 which states that the manufacturers requirements are to be met. This includes complying with the torque settings of the terminal screws
- Simply adjust to the correct setting, choose the screwdriver tip and then tighten until it clicks
- Slim blades to allow access to terminal connectors

Product code	Description	Pack quantity	Minimum order unit
1773863	Torque screwdriver plus setting tool and 7 blades Kit contains: Torque Vario-S VDE screwdriver 1 - 5 Nm Toque setting tool VDE slotted blade 3.5mm VDE slotted blade 4mm VDE slotted blade 5.5mm VDE POZI blade PZ1 VDE POZI blade PZ2 VDE phillips blade PH1 VDE phillips blade PH2 Calibration certificate	1	1
IMT38066	MCB blade	1	1

Optime electrical hand tools

- A range of VDE hand tools for professional use and approved to the highest standards
- VDE approved, tested to 10,000v, suitable for 1000 volt applications

Product code	Description	Pack quantity	Minimum order unit
VDE insulated softgrip screwdrivers - TVS			
1773831A	2.5 x 75mm slotted	1	1
1773832A	4 x 100mm slotted	1	1
1773833A	5.5 x 125mm slotted	1	1
1773834A	6.5 x 150mm slotted	1	1
1773835A	PZ1 x 80mm	1	1
1773836A	PZ2 x 100mm	1	1
VDE insulated softgrip pliers - TVP			
1773839A	160mm VDE combination	1	1
1773840A	180mm VDE combination	1	1
1773841A	200mm VDE combination	1	1
1773842A	200mm VDE snipe nose	1	1
1773845A	160mm VDE wire stripping	1	1
1773846A	160mm VDE snipe nose	1	1
1773850A	160mm VDE diagonal cutters	1	1
1773851A	180mm VDE diagonal cutters	1	1
1773855A	160mm VDE cable shears	1	1



Hand tools

Re-threading tool

■ Re-threading tool suitable for switch sockets and conduit boxes



Product code	Description	Pack quantity	Minimum order unit
3310010	M3.5 thread	1	1

General electricians tools



Product code	Description	Pack quantity	Minimum order unit
08CS1	Co-axial stripper	1	1 ea
IMT38065	Nylon fish wire draw tape 10m	1	1 ea
08FW20FH	Nylon fish wire draw tape 20m	1	1 ea

Crimping tool

■ For most popular sizes for insulated terminals

■ Heavy duty construction



Product code	Description	Pack quantity	Minimum order unit
1774900A	190mm terminal crimping tool	1	1
08CRIMPKIT	Crimp tool connector kit	1	1 pack

Tool sets

Product code	Description	Pack quantity	Minimum order unit
--------------	-------------	---------------	--------------------

General purpose tool sets

1773502	7 piece softgrip screwdriver set	1	1
---------	----------------------------------	---	---

Electrical tool sets

1773600	6 piece economy 1000V VDE screwdriver set	1	1
1773157	10 piece economy electricians tool set	1	1
1773830A	3 piece VDE plier and cutter set	1	1
1773308A	15 piece VDE plier and screwdriver set	1	1
1773862A	7 piece VDE screwdriver set	1	1

Hammers

■ High quality forged and polished heads



Product code	Description	Pack quantity	Minimum order unit
1773103A	1 piece forged hammer 20oz	1	1
1773104A	1 piece forged hammer 16oz	1	1

Hand tools



Tape measures

- Heavy duty construction

Product code	Description	Pack quantity	Minimum order unit
1773189A	Merchandiser of 12 x 7.5m	12	1
1773320A	Merchandiser of 12 x 10m	12	1
1773356A	Merchandiser of 12 x 5m	1	1



Knives

- Trimming knife has die cast case
- Soft grip knife has anti-slip rubber grip and rigid PVC holster

Product code	Description	Pack quantity	Minimum order unit
1773211A	Merchandiser of 36 trimming knives	36	1
1773214A	Merchandiser of 12 soft grip knives	12	1
1773221	Retractable knife blades	100	100



Saws, hacksaws and blades

- Spare blades stored in frame
- Blades suitable for cutting a wide range of metals and plastic

Product code	Description	Pack quantity	Minimum order unit
Hacksaw frames - THS			
3306901A	300mm/12" hacksaw	1	1
3306008A	257mm/6" mini hacksaw	1	1
Hacksaw blades			
3300134A	24T 12" (pack of 10)	10	1
3300159A	32T 12" bi-metal (pack of 10)	10	1
3305000A	257mm/6" mini (pack of 10)	10	1
Saws			
1774350	22" hardpoint saw 7t/8pt	1	1



Chisels

Product code	Description	Pack quantity	Minimum order unit
1773121	Bolster chisel with grip 4"	1	1
1773122	Bolster chisel 2 1/4"	1	1



Optime cable tacker and staples

The professionals choice for fastening low voltage telephone and alarm cable:

- Lightweight
- Super comfort ABS handle
- Staples neatly into corners
- Safe and easy to load

Product code	Description	Pack quantity	Minimum order unit
IMT70000	Professional cable tacker	1	1
IMT70001	45/10mm galvanised staples	5000	5000
IMT70002	60/10mm galvanised staples	5000	5000
IMT70003	45/10mm white staples	5000	5000

Fixing cases and trade tubs



Trade tubs - fixings

- An excellent range of screws, plugs and fixings in durable, re-sealable tub with carry handle
- Quality fixings
- Superb value

Product code	Description	Pack quantity	Minimum order unit
1776020	No.1 400 brown plugs and 10 x 2" screws	8	8
1776015	No.2 500 red plugs and 8 x 1½" screws	8	8
1776111	No.11 200 cavity fixings and screws	4	4
1776200	No.12 500 4 x 60mm green decking screws	8	8



Trade tubs - cable clips

- A range of popular clips in transparent plastic tubs with a re-sealable lid and handy carry handle

Product code	Description	Pack quantity	Minimum order unit
Tower clips			
05TUB04	1/1.5mm ² and 2.5mm ² grey kf cable clips 400 piece	1	8 ea
05TUB05	1/1.5mm ² and 2.5mm ² grey plus cable clips 400 piece	1	8 ea
Thorsman clips			
1776112	No.9 400 1/1.5mm ² and 2.5mm ² T&E clips grey	4	4



Fixing cases

- Designed for the builder or electrician
- Robust construction
- Multi-purpose

Product code	Description	Pack quantity	Minimum order unit
1775900	300 x 220 x 66mm single deck multi - compartment	1	1
1775901	440 x 330 x 66mm single deck multi - compartment	1	1
1775909	Chipboard fixings case includes: 3.5 x 15, 20, 25mm, 4 x 25, 30, 40, 45, 50mm and 5 x 50, 60, 80mm chipboard screws	1	1
1775911	Twin pack fixings case includes: 330 x 220 x 50 small sorta case 390 x 280 x 88 medium sorta case	1	1
1773962	A4 plastic fixings case	1	1
1775940	TSC5 sorta case	1	1
73SBOX	10 compartment storage box	1	1 pack

Site power



Site power

- Portable power transformer for use with 110V equipment
- Suitable for use with power tools and site lights
- TTS4W - allows up to four tools or lights, or combinations of both to be run from a single power source

Product code	Description	Pack quantity	Minimum order unit
TT15KVA	240/110V 1.5kVA transformer	1	1
TT30KVA	240/110V 3/3.3kVA transformer	1	1
TTS3W	3 way inline splitter	1	1
TTS4W	110V 4 way splitter box	1	1

Cable reels and trailing leads



- Heavy duty industrial quality polypropylene construction
- Tested to comply with BS EN61242 & BS1363
- Wide range of cable lengths and ratings available
- CE approved

Product code	Description	Pack quantity	Minimum order unit
Trailing leads			
4502105	14m 16A lead set 110V 1.5mm ²	1	1
4503107	14m 16A lead set 110V 2.5mm ²	1	1
Cable reel cut out range			
4510080	10m 13A cassette 4 sockets cut out	1	1
4510090	10m 10A cassette 2 sockets cut out	6	6
4510092	25m 13A open 2 sockets cut out	1	1
4510094	40m 13A open 2 sockets cut out	1	1
4510096	50m 13A open 2 sockets cut out	1	1
4510093	25m 16A 110V open 2 sockets cut out	1	1
4510095	40m 16A 110V open 2 sockets cut out	1	1

Worklights



Worklights

- Lens and case are virtually shatterproof
- Low power consumption compared with halogen/LCD
- Light remains cool avoiding possible fire hazard
- Sealed to IP rating against dust and moisture
- Boosters available for recharge and directly power site lighting from a 12V car/van power supply
- The new lightweight LIGHTSTIK2 inspection light incorporates rechargeable Li-ion battery technology, providing a brighter light and longer battery shelf life. It is water and oil resistant to IP65

Product code	Description	Pack quantity	Minimum order unit
1775420G2	Goliath G250 55W 240V light	1	1
1775421G2	Goliath G250 plus 55W 240V light	1	1
1775421G2B	Goliath G250 plus 55W 240V light with battery	1	1
1775422G2	Goliath G250 pro 55W 110V light	1	1
1775422G2B	Goliath G250 pro 55W 110V light with battery	1	1
1775423G2	55W Light 110V G2	1	1
1775440	Goliath replacement tube 55W	1	1
LIGHTSTIK2	Lightstik handheld LED lamp	1	1
LSCHARGER	Lightstik charger	1	1

Power tool accessories



Screwdriver bits

- Supplied in slotted, phillips and pozi
- Pre-packed for POS display

Product code	Description	Pack quantity	Minimum order unit
1772418A	7 piece bit set including bit holder	1	1
1775112	Grabit damaged screw remover	1	1



SDS plus chisels

Product code	Description	Pack quantity	Minimum order unit
1773106A	20 x 250mm	1	1
1773107A	40 x 250mm	1	1

Hammer SDS plus bit - THB

- For use in concrete, brick, stone and rock
- Suitable for electro-pneumatic rotary hammer machines with an SDS fitting

Product code	Description	Pack quantity	Minimum order unit
1788868A	4 x 110mm	1	1
1788926A	5 x 110mm	1	1
1788934A	5 x 160mm	1	1
1788975A	5.5 x 110mm	1	1
1788989A	5.5 x 160mm	1	1
1789023A	6 x 110mm	1	1
1789016A	6 x 160mm	1	1
1789028A	6.5 x 110mm	1	1
1789030A	6.5 x 160mm	1	1
1789052A	7 x 110mm	1	1
1789054A	7 x 160mm	1	1
1789080A	8 x 110mm	1	1
1789108A	8 x 160mm	1	1
1789116A	8 x 210mm	1	1
1789120A	8 x 260mm	1	1
1789153A	10 x 160mm	1	1
1789165A	10 x 210mm	1	1
1789195A	10 x 450mm	1	1
1789252A	12 x 160mm	1	1
1789272A	12 x 210mm	1	1
1789304A	12 x 250mm	1	1
1789319A	12 x 450mm	1	1
1789323A	12 x 600mm	1	1
1789350A	14 x 150mm	1	1
1789352A	14 x 200mm	1	1
1789410A	14 x 450mm	1	1
1789414A	14 x 600mm	1	1
1789440A	16 x 150mm	1	1
1789450A	16 x 200mm	1	1
1789455A	16 x 300mm	1	1
1789470A	16 x 450mm	1	1
1789481A	16 x 600mm	1	1
1789485A	18 x 450mm	1	1
1789500A	20 x 450mm	1	1
1789510A	20 x 600mm	1	1
1789520A	22 x 450mm	1	1
1789570A	25 x 450mm	1	1
1773105A	5 piece set (5 x 110mm, 6 x 110mm, 6 x 160mm, 8 x 160mm and 10 x 160mm)	1	1



Power tool accessories



High speed steel rolled flute drill - tube packed

- Suitable for metal, wood, plastic and steel
- Comprehensive range available in metric and imperial sizes
- Packed in plastic tubes

Product code	Description	Pack quantity	Minimum order unit
Imperial			
1800032A	3/32"	10	10
1800049A	7/64"	10	10
1800056A	1/8"	10	10
1800063A	9/64"	10	10
1800094A	3/16"	10	10
1800131A	1/4"	10	10
1800216A	3/8"	5	5
Metric			
1800414A	1mm	10	10
1800421A	1.5mm	10	10
1800438A	2mm	10	10
1800445A	2.5mm	10	10
1800452A	3mm	10	10
1800456A	3.3mm	10	10
1800469A	3.5mm	10	10
1800476A	4mm	10	10
1800483A	4.5mm	10	10
1800490A	5mm	10	10
1800506A	5.5mm	10	10
1800513A	6mm	10	10
1800520A	6.5mm	10	10
1800537A	7mm	10	10
1800544A	7.5mm	10	10
1800568A	8mm	10	10
1800575A	8.5mm	10	10
1800582A	9mm	5	5
1800605A	10mm	5	5
1800612A	10.5mm	5	5
1800629A	11mm	5	5
1800643A	12mm	5	5
1800667A	13mm	5	5



Imperial jobber drill

Product code	Description	Pack quantity	Minimum order unit
1800305A	1/8"	10	10
1800308A	3/16"	10	10
1800309A	3/32"	10	10

Power tool accessories



Auger bits

■ Suitable for drilling deep holes in hardwood, softwood, plywood, MDF etc

Product code	Description	Pack quantity	Minimum order unit
Hexagonal shank			
1801120A	13 x 200mm	1	1
1801125A	16 x 200mm	1	1
1801130A	19 x 200mm	1	1
1801140A	22 x 200mm	1	1
1801150A	25 x 200mm	1	1
1801160A	32 x 200mm	1	1
SDS plus shank			
1806060A	19 x 200mm	1	1
1806070A	22 x 200mm	1	1
1806080A	25 x 200mm	1	1



Flat bits

- Manufactured from high quality carbon steel
- Suitable for use in hand and power tools
- Hexagonal shank to fit conventional drill

Product code	Description	Pack quantity	Minimum order unit
1801590A	13 x 160mm	1	1
1801619A	16 x 160mm	1	1
1801810A	19 x 160mm	1	1
1801626A	20 x 160mm	1	1
1801633A	22 x 160mm	1	1
1801640A	25 x 160mm	1	1
1801660A	32 x 160mm	1	1
1801680A	38 x 160mm	1	1
1802650A	6 piece set (10, 13, 16, 19, 22, 25mm)	1	1



Step and taper drills

- Each drill will cut a variety of hole diameters in many materials
- Manufactured from ground high speed steel
- Non-slip point produces its own pilot hole

Product code	Description	Pack quantity	Minimum order unit
Step drills			
3310205A	No.2 (9 diameters) 4 - 20mm	1	1
3310210A	No.3 (14 diameters) 4 - 30mm	1	1
Taper drills			
3310105A	No.2 5 - 20mm	1	1
3310110A	No.3 16 - 30mm	1	1

Power tool accessories



Holesaws

- Suitable for cutting a large variety of hole diameters in many different materials
- Variable pitch tooth design
- Arbors and accessories available
- Industry standard fitting
- Kits contain 6 holesaws and 2 arbors

Product code	Description	Pack quantity	Minimum order unit
3314010	16mm	1	1
3314030	20mm	1	1
3314040	22mm	1	1
3314050	25mm	1	1
3314070	32mm	1	1
3312090	38mm	1	1
3312100	40mm	1	1
3312110	44mm	1	1
3314120	51mm	1	1
3312130	57mm	1	1
3312199	60mm	1	1
3312140	64mm	1	1
3312198	67mm	1	1
3312150	70mm	1	1
3312196	73mm	1	1
3312160	76mm	1	1
3312195	79mm	1	1
3312197	83mm	1	1
3312194	86mm	1	1
3312193	89mm	1	1
3312192	92mm	1	1
3312191	95mm	1	1
3312180	102mm	1	1
3312189	105mm	1	1
3312187	111mm	1	1
3312186	114mm	1	1
3312184	127mm	1	1
3312181	152mm	1	1
3311910	Electricians holesaw kit Contains 20mm, 25mm, 32mm, 38mm, 51mm and 64mm holesaws. Also contains A1 and A2 arbors	1	1

Arbors

- Interchangeable with all major brands

Product code	Description	Pack quantity	Minimum order unit
3314300	A1 arbor (14 - 30mm holesaws $\frac{3}{8}$ " hex)	1	1
3314310	A2 arbor (32 - 152mm holesaws $\frac{7}{16}$ " hex)	1	1
3314320	A10 arbor (32 - 152mm holesaws $\frac{3}{8}$ " hex)	1	1
3314308	SDS and arbor (14 - 30mm holesaws)	1	1
3313004	Pilot drill 1 (for A1, A2 & A10 arbors 82mm)	1	1
3313011	Pilot drill 2 (for A4 arbor 107mm)	1	1

Power tool accessories



Electricians box sinker

- Quick and accurate fitting of metal back boxes
- Ideal for either single or double boxes
- Pre-drills the fixing hole
- Suitable for block or masonry
- Sinker kit includes a circular counter bore cutter with 6mm guide rod, quadcutter with hardened steel ground blade and standard 6mm SDS drill bit, all housed in an aluminium carry case which includes a can of oil

Product code	Description	Pack quantity	Minimum order unit
3310165	Quadcut single box sinker kit	1	1
3310170	6mm guide rod	1	1
3310180	Quadcut double box cutter only	1	1

Electrical testing

Test meters

- DC volts - 1mV to 500V
- AC volts 1V to 500V
- DC current - 0.1mA to 200mA
- Resistance - 1ohm to 2000ohm

EUROET111

- Tests for circuit continuity
- Avoids drilling or cutting into unseen hazards in walls, floors and ceilings
- Electronically senses through walls, floors and ceilings

Product code	Description	Pack quantity	Minimum order unit
DM25	Electrical test meter 10mm display	1	1 ea
EUROET111	Electrical test meter	1	1 ea

Detectors

- Avoids drilling or cutting into unseen hazards in walls, floors and ceilings
- Electronically senses through walls, floors and ceilings
- Features 7 major test functions: battery test, bulb test, fuse test, circuit test, appliance test, DC voltage test and AC power test

Product code	Description	Pack quantity	Minimum order unit
EUROWPP123	Wire, pipe and power detector	1	1 ea
EUROWPS115	Wire, pipe and stud detector	1	1 ea
EUROJS103	Joint and stud detector	1	1 ea



EURO WPP123



EURO WPS115

Power testers

- Detects live wires
- Fault finding on sockets, light switches, power tools etc
- 4 unique functions: circuit continuity test, contact power test for 110, 240 and 415V AC, automatic polarity test (+ or -) on battery powered circuits, power test for 3-30VDC
- Instantly checks all batteries, bulbs and fuses, including standard, alkaline or re-chargable batteries and miniature cells, car fuses and bulbs etc

Product code	Description	Pack quantity	Minimum order unit
EUROPT112	Power tester	1	1 ea
EUROCT113	Circuit tester	1	1 ea
EUROETP116	Electrical test probe	1	1 ea



EURO PT112

Electrical testing



EURO BB110



EURO MC101

Multi testers

- Features 7 major test functions: battery test, bulb test, fuse test, circuit test, appliance test, DC voltage test and AC power test
- Instantly checks all batteries, bulbs and fuses including standard, alkaline or re-chargable batteries and miniature cells, car fuses and bulbs etc

Product code	Description	Pack quantity	Minimum order unit
EUROMC101	Multi - check tester	1	1 ea
EUROBB110	Battery bulb and fuse tester	1	1 ea



EURODTM118

Damp tester

- Electronically determines levels of dampness
- Helps locate and trace sources of moisture in timber, concrete, plaster etc
- Fixed sensor pins
- Measures the extent of the dampness

Product code	Description	Pack quantity	Minimum order unit
EURODTM118	Damp test meter	1	1 ea

Socket tester

- Checks wiring and sockets
- One safe simple operation
- Plug in, switch on and read the results
- Checks wiring and sockets
- 3 light illuminated - socket correctly wired
- Approved to BS5458/HD 215 S1

Product code	Description	Pack quantity	Minimum order unit
AS109	13A socket tester	1	1 ea

Index

Product Code	Page No.	Product Code	Page No.	Product Code	Page No.	Product Code	Page No.	Product Code	Page No.
05TUB04	42	1265040	10	1520200	11	1788934A	45	1800568A	46
05TUB05	42	1501035	13	1772418A	45	1788975A	45	1800575A	46
08CRIMPKIT	40	1501040	13	1773103A	40	1788989A	45	1800582A	46
08CS1	40	1501500	13	1773104A	40	1789016A	45	1800605A	46
08FW20FH	40	1501506	13	1773105A	45	1789023A	45	1800612A	46
1001007	8	1501510	13	1773106A	45	1789028A	45	1800629A	46
1003003	8	1501520	13	1773107A	45	1789030A	45	1800643A	46
1005008	8	1501526	13	1773121	41	1789052A	45	1800667A	46
1006006	8	1501530	13	1773122	41	1789054A	45	1801120A	47
1007004	8	1501540	13	1773157	40	1789080A	45	1801125A	47
1060030	9	1501546	13	1773189A	41	1789108A	45	1801130A	47
1060040	9	1501550	13	1773211A	41	1789116A	45	1801140A	47
1060050	9	1501556	13	1773214A	41	1789120A	45	1801150A	47
1060060	9	1501560	13	1773221	41	1789153A	45	1801160A	47
1060070	9	1501566	13	1773308A	40	1789165A	45	1801590A	47
1060080	9	1501570	13	1773320A	41	1789195A	45	1801619A	47
1090600	8	1501610	9	1773356A	41	1789252A	45	1801626A	47
1090605	8	1501615	9	1773502	40	1789272A	45	1801633A	47
1090610	8	1501630	9	1773600	40	1789304A	45	1801640A	47
1090615	8	1501635	9	1773830A	40	1789319A	45	1801660A	47
1090720	8	1501640	9	1773831A	39	1789323A	45	1801680A	47
1090725	8	1501645	9	1773832A	39	1789350A	45	1801810A	47
1130110	8	1501650	9	1773833A	39	1789352A	45	1802650A	47
1130115	8	1511000	15	1773834A	39	1789410A	45	1806060A	47
1130120	8	1511003	15	1773835A	39	1789414A	45	1806070A	47
1130155	8	1511004	15	1773836A	39	1789440A	45	1806080A	47
1130160	8	1511006	15	1773839A	39	1789450A	45	2001008	30
1130165	8	1511009	15	1773840A	39	1789455A	45	2011005	30
1130170	8	1511012	15	1773841A	39	1789470A	45	2011017	30
1130175	8	1511015	15	1773842A	39	1789481A	45	2011021	30
1131110	9	1511018	15	1773845A	39	1789485A	45	2022009	30
1131115	9	1511021	15	1773846A	39	1789500A	45	2022010	30
1131130	9	1511022	15	1773850A	39	1789510A	45	2022029	30
1131135	9	1511024	15	1773851A	39	1789520A	45	2022039	30
1131140	9	1511027	15	1773855A	39	1789570A	45	2032011	30
1131145	9	1511100	14	1773862A	40	1800032A	46	2032041	30
1131160	9	1511103	14	1773863	39	1800049A	46	2032061	30
1131165	9	1511106	14	1773962	42	1800056A	46	2032091	30
1131170	9	1511108	14	1774350	41	1800063A	46	2041200	30
1131175	9	1511109	14	1774900A	40	1800094A	46	2041259	30
1131180	9	1511110	14	1775112	45	1800131A	46	2042011	30
1200005	10	1511112	14	1775420G2	44	1800216A	46	2042021	30
1200203	10	1511115	14	1775421G2	44	1800305A	46	2042041	30
1200401	10	1511118	14	1775421G2B	44	1800308A	46	2052011	30
1200443	10	1511120	14	1775422G2	44	1800309A	46	2052051	30
1208016	10	1511124	14	1775422G2B	44	1800414A	46	2053015	35
1208057	10	1511126	14	1775423G2	44	1800421A	46	2060002	30
1208060	10	1511203	15	1775440	44	1800438A	46	2060135	30
1220010	9	1511206	15	1775900	42	1800445A	46	2070134	30
1220104	9	1511209	15	1775901	42	1800452A	46	2070209	30
1240001	10	1511224	15	1775909	42	1800456A	46	2101004	30
1248004	10	1511227	15	1775911	42	1800469A	46	2106003	30
1249002	10	1511230	15	1775940	42	1800476A	46	21RCK10	36
1260025	10	1511231	15	1776015	42	1800483A	46	2111003	30
1260066	10	1511234	15	1776020	42	1800490A	46	2111029	30
1260108	10	1520002	11	1776111	42	1800506A	46	2116010	30
1260124	10	1520005	11	1776112	42	1800513A	46	2116028	30
1260130	10	1520030	11	1776200	42	1800520A	46	2126019	30
1260140	10	1520060	11	1788868A	45	1800537A	46	2126027	30
1260165	10	1520060	12	1788926A	45	1800544A	46	2131019	30

Index

Product Code	Page No.	Product Code	Page No.	Product Code	Page No.	Product Code	Page No.	Product Code	Page No.
2131027	30	2420116	37	28CTBP20W	38	3313004	48	3719455	16
2136018	30	2420117	37	3000254	36	3313011	48	3719509	16
2136026	30	2420118	37	3000270	36	3314010	48	3719516	16
2137014	30	2420200	37	3000288	36	3314030	48	3719523	16
2141026	30	2420201	37	3000296	36	3314040	48	3719530	16
2146017	30	2420202	37	3000410	36	3314050	48	3719547	16
2146025	30	2420203	37	3000420	36	3314070	48	3719554	16
2201000A	31	2420204	37	3000430	36	3314120	48	3719561	16
2201001A	31	2420205	37	3000440	36	3314300	48	3719585	16
2202000A	31	2420300	37	3000938	36	3314308	48	3736025	16
2202005A	31	2420301	37	3000952	36	3314310	48	3736032	16
2202011A	31	2420302	37	3000956	36	3314320	48	3736049	16
2203000A	31	2420303	37	3000959	36	3701313	21	3736056	16
2203002A	31	2420304	37	3000965	36	3701337	21	3736070	16
2203004A	31	2423000	37	3000969	36	3701344	21	3736087	16
2203005A	31	2423100	37	3000971	36	3701368	21	3736117	16
2205000A	31	2424000	37	3280010	29	3701513	21	3736124	16
2205002A	31	2424004	37	3280015	29	3701521	21	3736179	16
2206000A	31	2424005	37	3280020	29	3701539	21	3736209	16
2206002A	31	25EC365	37	3280035	29	3701547	21	3736278	16
2210000A	31	2700510	29	3280210	29	3701554	21	3736353	16
2211000A	31	2700511	29	3280215	29	3701588	21	3736377	16
2212000A	31	2700513	29	3280220	29	3701596	21	3736391	16
2213000A	31	2700530	29	3280225	29	3701604	21	3736476	16
2213001A	31	2700531	29	3300134A	41	3701612	21	3736483	16
2214000A	31	2700533	29	3300159A	41	3701620	21	3736506	16
2214001A	31	2700610	29	3305000A	41	3701624	21	3736513	16
2215000A	31	2700630	29	3306008A	41	3701638	21	3736520	16
2215001A	31	2700650	29	3306901A	41	3701642	21	3736537	16
2400026	28	2700710	29	3310010	40	3701646	21	3736544	16
2400033	28	2703015	29	3310105A	47	3701650	21	3736551	16
2400064	28	2703023	29	3310110A	47	3701653	21	3736568	16
2400071	28	2704013	29	3310165	49	3701661	21	3737500	16
2400101	28	2704054	29	3310170	49	3701687	21	3737502	16
2400118	28	2704063	29	3310180	49	3703065	26	3737503	16
2400123	28	2705110	29	3310205A	47	3703210	26	3737505	20
2400124	28	2705310	29	3310210A	47	3703215	26	3737506	20
2400149	28	2705320	29	3311910	48	3703220	26	3737507	20
2400156	28	2705410	29	3312090	48	3703225	26	3737508	20
2400187	28	2705420	29	3312100	48	3703230	26	3739026	20
2400194	28	27BN3	38	3312110	48	3703235	26	3739033	20
2400248	28	27BN4	38	3312130	48	3703260	26	3739057	20
2400255	28	27BU3	38	3312140	48	3703265	26	3739125	20
2400286	28	27BU4	38	3312150	48	3703275	26	3739132	20
2400293	28	27GY2	38	3312160	48	3703280	26	3739149	20
2420100	37	27GY3	38	3312180	48	3719172	16	3739156	20
2420101	37	27GY4	38	3312181	48	3719196	16	3739194	20
2420102	37	27GY5	38	3312184	48	3719219	16	3739200	20
2420103	37	27GY6	38	3312186	48	3719226	16	3739255	20
2420104	37	2810109	13	3312187	48	3719240	16	3739262	20
2420105	37	2810125	13	3312189	48	3719301	16	3739279	20
2420106	37	2810141	13	3312191	48	3719318	16	3739286	20
2420107	37	2810166	13	3312192	48	3719325	16	3739309	20
2420108	37	2810182	13	3312193	48	3719349	16	3739354	20
2420110	37	2810901	13	3312194	48	3719363	16	3739361	20
2420111	37	2810927	13	3312195	48	3719387	16	3739378	20
2420112	37	2810943	13	3312196	48	3719400	16	3739392	20
2420113	37	28CTBP15	38	3312197	48	3719417	16	3739415	20
2420114	37	28CTBP15W	38	3312198	48	3719424	16	3739422	20
2420115	37	28CTBP20	38	3312199	48	3719431	16	3740026	18

Index

Product Code	Page No.	Product Code	Page No.	Product Code	Page No.	Product Code	Page No.	Product Code	Page No.
3740040	18	3742351	17	3743844	19	3746783	24	3752292	25
3740088	18	3742354	17	3743846	19	3746784	24	3752294	25
3740095	18	3742361	17	3743848	19	3746786	24	3752296	25
3740101	18	3742378	17	3743850	19	3746900	24	3752410	25
3740118	18	3742381	17	3743852	19	3746902	24	3752411	25
3740125	18	3742385	17	3743860	20	3746906	24	3752510	26
3740132	18	3742392	17	3743861	20	3746908	24	3752515	26
3740137	18	3742408	17	3743862	20	3746912	24	3752520	26
3740140	18	3742415	17	3743863	20	3747113	21	3752525	26
3740141	18	3742422	17	3743864	20	3747120	21	3752530	26
3740142	18	3742446	17	3743865	27	3747137	21	3752560	26
3740143	18	3742453	17	3745025	23	3747144	21	3752565	26
3740144	18	3742477	17	3745032	23	3747151	21	3752570	26
3740145	18	3742484	17	3745038	23	3747168	21	3752575	26
3740146	18	3742491	17	3745042	23	3747175	21	3752580	26
3740148	18	3742507	17	3745045	23	3747182	21	3790000	27
3740151	18	3742514	17	3745050	23	3747199	21	3790002	27
3740152	18	3742521	17	3745055	23	3747205	21	3790004	27
3740153	18	3743180	19	3745060	23	3747212	21	3790006	27
3740158	18	3743182	19	3745065	23	3747717	21	3790010	27
3740179	18	3743183	19	3745066	23	3747755	21	3790014	27
3740187	18	3743184	19	3745075	23	3747758	22	3790030	27
3740194	18	3743185	19	3745210	23	3750050	22	3790032	27
3740197	18	3743187	19	3745212	23	3750056	22	3790034	27
3740198	18	3743188	19	3745214	23	3750057	22	3790036	27
3742026	17	3743190	19	3745216	23	3750058	22	3790038	27
3742033	17	3743191	19	3745218	23	3750060	22	3790040	27
3742037	17	3743192	19	3745223	24	3750070	22	3790044	27
3742040	17	3743193	19	3745230	23	3750080	22	3790046	27
3742057	17	3743194	19	3745232	23	3750090	22	3790048	27
3742064	17	3743195	19	3745400	23	3750100	22	3790050	27
3742088	17	3743207	19	3745405	23	3750110	22	3790062	27
3742095	17	3743215	19	3746012	23	3752000	25	3790064	27
3742098	17	3743220	19	3746104	22	3752110	25	3790066	27
3742101	17	3743222	19	3746105	23	3752111	25	3790068	27
3742118	17	3743337	19	3746125	23	3752115	25	3790070	27
3742125	17	3743344	19	3746130	22	3752116	25	3790074	27
3742127	17	3743351	19	3746132	23	3752210	24	3790078	27
3742132	17	3743360	19	3746138	23	3752215	24	3790082	27
3742170	17	3743365	19	3746142	23	3752216	24	3790086	27
3742171	17	3743366	19	3746145	23	3752220	24	3790090	27
3742187	17	3743367	19	3746154	22	3752221	24	3790091	27
3742194	17	3743368	19	3746155	23	3752225	24	3790092	27
3742200	17	3743800	19	3746156	24	3752226	24	3790093	27
3742209	17	3743802	19	3746160	23	3752230	24	3790094	27
3742217	17	3743804	19	3746161	22	3752231	24	3790204	27
3742224	17	3743806	19	3746178	22	3752235	24	3790207	27
3742231	17	3743808	19	3746192	22	3752236	24	3790208	27
3742240	17	3743810	19	3746308	23	3752250	25	3BW20K	33
3742247	17	3743820	19	3746310	23	3752252	25	3BW20SK	33
3742255	17	3743822	19	3746314	23	3752254	25	3BW25K	33
3742262	17	3743824	19	3746316	23	3752260	24	3BW32K	33
3742279	17	3743826	19	3746318	23	3752261	24	3BW40K	33
3742280	17	3743828	19	3746651	23	3752265	24	3BW50K	33
3742286	17	3743830	19	3746751	23	3752266	24	3BW63K	33
3742293	17	3743832	19	3746752	23	3752270	24	4301010	35
3742309	17	3743834	19	3746770	24	3752271	24	4301015	35
3742323	17	3743836	19	3746772	24	3752275	24	4301020	35
3742330	17	3743840	19	3746774	24	3752276	24	4301040	35
3742347	17	3743842	19	3746782	24	3752290	25	4301045	35

Index

Product Code	Page No.	Product Code	Page No.	Product Code	Page No.	Product Code	Page No.	Product Code	Page No.
4301100	35	70CBRC12	33	77CR06P	32	IMT70002	41	MP16DW	32
4304018	35	70CBRC14	33	77CR07P	32	IMT70003	41	MP16W	32
4304019	35	70CBRC16	33	77CR09P	32	LBW20K	33	MP202B	32
4304025	35	70CBRC4	33	77CW04P	31	LBW20SK	33	MP202DB	32
4304026	35	70CBRC5	33	77CW05P	31	LBW25K	33	MP202DR	32
4304032	35	70CBRC6	33	77CW06P	31	LBW32K	33	MP202DW	32
4502105	43	70CBRC7	33	77CW07P	31	LBW40K	33	MP202R	32
4503107	43	70CBRC8	33	77CW09P	31	LBW50K	33	MP202W	32
4510080	43	70CBRC9	33	77CW12PAC	31	LBW63K	33	MP20B	32
4510090	43	70CG3CE	33	77CW15P	31	LCW20K	33	MP20DB	32
4510092	43	70CGDKF15	33	77CW19P	31	LCW20SK	33	MP20DR	32
4510093	43	70CGDKF25	33	77CW25P	31	LCW25K	33	MP20DW	32
4510094	43	70CGKF10	33	78PCW10AC	35	LCW32K	33	MP20R	32
4510095	43	70CGKF100	33	AS109	51	LCW40K	33	MP20W	32
4510096	43	70CGKF15	33	CHOCBOXTH	36	LCW50K	33	MP252B	32
5106010	35	70CGKF160	33	DM25	50	LCW63K	33	MP252W	32
5320100	35	70CGKF25	33	EUROBB110	51	LIGHTSTIK2	44	MP25B	32
5320210	35	70CGKF40	33	EUROCT113	50	LSCHARGER	44	MP25DB	32
5322010	35	70CGKF60	33	EURODTM118	51	M101005	31	MP25DW	32
5322020	35	70CWPM	32	EUROET111	50	M130806	31	MP25R	32
5322110	35	70CWPT	32	EUROETP116	50	M151107	31	MP25W	32
5322130	35	70CWRC10	33	EUROJS103	50	M181407	31	MP32DB	32
5322160	35	70CWRC11	33	EUROMC101	51	M241808	31	MP32DW	32
5322180	35	70CWRC12	33	EUROPT112	50	MBM15S	32	MP32W	32
5322465	35	70CWRC14	33	EUROWPP123	50	MBM20L	32	MP40B	32
5322470	35	70CWRC16	33	EUROWPS115	50	MBM20S	32	MP40W	32
55CTP640B100	28	70CWRC275	33	IMT36179	29	MBM25L	32	MPL202B	32
55PP1	34	70CWRC35	33	IMT36180	29	MBM25S	32	MPL20B	32
64LSF26R	34	70CWRC4	33	IMT37303	29	MBM32L	32	MPL20R	32
64LSF26W	34	70CWRC5	33	IMT37304	29	MBM32S	32	MPL20W	32
64LSF272R	34	70CWRC6	33	IMT37307	29	MBW20K	33	MS3	30
64LSF272W	34	70CWRC7	33	IMT37308	29	MBW20SK	33	MS4	30
64LSF28R	34	70CWRC8	33	IMT37311	29	MBW25K	33	MS5	30
64LSF28W	34	70CWRC9	33	IMT37314	29	MBW32K	33	MS6	30
64LSF302R	34	70CWSM	32	IMT38005	14	MBW40K	33	MS7	30
64LSF30R	34	72CB05P	32	IMT38006	14	MBW50K	33	MS8	30
64LSF30W	34	72CB06P	32	IMT38007	14	MBW63K	33	MS9	30
64LSF32R	34	72CB07P	32	IMT38008	14	MCW20K	33	MS10	30
64LSF32W	34	72CBKF40	32	IMT38009	14	MCW20SK	33	MS11	30
64LSF342R	34	72CBKF60	32	IMT38010	14	MCW25K	33	MS12	30
64LSF342W	34	72CT05P	32	IMT38011	14	MCW32K	33	MS13	30
64LSF34R	34	72CT06P	32	IMT38012	14	MCW40K	33	MS14	30
64LSF34W	34	72CT07P	32	IMT38013	14	MCW50K	33	MS16	30
64LSF37R	34	72CW05P	32	IMT38014	14	MCW63K	33	MS18	30
64LSF37W	34	72CW06P	32	IMT38015	14	MJ2	30	MS20	30
64LSF40R	34	72CW07P	32	IMT38016	14	ML10B	32	MT9	30
64LSF40W	34	73SBOX	42	IMT38017	14	ML16B	32	MT10	30
64LSF43R	34	77CB04P	31	IMT38018	14	ML16W	32	MT11	30
64LSF43W	34	77CB05P	31	IMT38019	14	ML20B	32	MT12	30
65CT05B	34	77CB06P	31	IMT38020	14	ML20R	32	MT14	30
65CT10B	34	77CB07P	31	IMT38021	14	ML20W	32	MT15	30
65SA04W	34	77CB09P	31	IMT38022	14	ML25B	32	SH20	33
65SA08W	34	77CB12PAC	31	IMT38023	14	ML25R	32	SH20S	33
65SA12W	34	77CB15PAC	31	IMT38024	14	ML25W	32	SH25	33
69FILL12	12	77CB19P	31	IMT38025	14	ML32W	32	SH32	33
69FIRE12	12	77CB25P	31	IMT38026	14	ML40W	32	TT15KVA	43
69SEAL12	12	77CGPF10P	32	IMT38065	40	ML50B	32	TT30KVA	43
69SEALC12	12	77CGPF1P	32	IMT38066	39	MP10B	32	TTS3W	43
70CBRC10	33	77CGPF25P	32	IMT70000	41	MP16B	32	TTS4W	43
70CBRC11	33	77CGPF4P	32	IMT70001	41	MP16DB	32		



UK contact details -

0870 608 8 608

Fax 0870 608 8 606

Ireland contact details -

01 601 2200

Fax 01 601 2201

As a global specialist in energy management with operations in more than 100 countries, Schneider Electric offers integrated solutions across multiple market segments, including leadership positions in Utilities & Infrastructures, Industries & Machine Manufacturers, Non-residential Buildings, Data Centres & Networks and in Residential.

Focused on making energy safe, reliable, efficient, productive and green, the Group's 130,000 plus employees achieved sales of 22.4 billion euros in 2011, through an active commitment to help individuals and organisations make the most of their energy.

We are changing our brand names and becoming one Schneider Electric. You'll get the same great quality products, but from one name you can remember and trust. This provides you and your customers with the reassurance associated with Schneider Electric.

Some of our market leading brands have already become Schneider Electric including Merlin Gerin, Telemecanique, Square D, GET, Mita, Sarel, Himel, Thorsman, Tower and TAC.

Working as one Schneider Electric makes it clearer that our ranges are highly compatible for integrated solutions.

Schneider Electric Ltd

United Kingdom
Stafford Park 5,
Telford
Shropshire
TF3 3BL
Tel: 0870 608 8 608
Fax: 0870 608 8 606
www.schneider-electric.com/uk

Ireland
Head office,
Block a
Maynooth Business Campus
Maynooth, Co. Kildare
Tel: (01) 601 2200
Fax: (01) 601 2201
www.schneider-electric.com/ie

Schneider Electric Limited is a company registered in England and Wales.
Registered number: 1407228. Registered office: Stafford Park 5, Telford, Shropshire TF3 3BL.

© 2011 Schneider Electric. All Rights Reserved. Schneider Electric, Active Energy Management, Compact, EcoStruxure, ION Enterprise, iRIO, Make the most of your energy, Masterpact, Micrologic, Power Plant To Plug, Modbus, and PowerLogic are owned by Schneider Electric Industries SAS, or its affiliated companies in the United States and other countries. 998-3432.

As standards, specifications and designs change from time to time, please ask for confirmation of the information given in this publication.

member of

