

SYLVANIA



CFLi

The complete portfolio

SYLVANIA

Your global partner for full spectrum lighting solutions

We are Havells-Sylvania, one of the world's major lighting groups. For more than a century we have improved the way people live by enabling them to enjoy better lighting in a more sustainable manner.





Our three main brands- Concord, Lumiance and Sylvania – concentrate strengths in research and development, LED lighting technology, product design, engineering and production, plus in-depth, honest application expertise, on their specialised areas of activity: high end architectural, decorative and functional professional lighting.

Our recent acquisition, in 2007, by Havells India Ltd gives us the financial strength and resources to significantly expand and improve the business. The group, which has 94 branches and representative offices and 8,000 staff in more than 50 countries, has grown rapidly to become a US\$ 1.20 billion company and currently operates 18 manufacturing plants in India, Europe, Latin America and Africa, producing globally acclaimed products such as gear, cables, wires and lighting.

Sylvania Lighting the way forward

The Sylvania brand is part of the Havells-Sylvania Group, which is one of the world's largest manufacturers of artificial light sources. It has a broad product offering that includes incandescent, halogen, CFL, HID and LED lamps, alongside various special products for the professional specifier.





Sylvania's CFLi Range

Sylvania Compact Fluorescent Lamps are available in a wide range of shapes and formats to meet the growing need for compact, energy efficient and long lasting lamps, coupled with excellent colour rendering.

They are the result of traditional fluorescent lamp making skills which, when combined with an integral state-of-the-art electronic ballast and starter circuit create a range of retrofit lamps that directly replace incandescent mains voltage filament lamps. Compact fluorescent lamps are also available without integral ballast, for use in traditional magnetic ballast fixtures or in the new generation of high efficiency, electronic ballast, downlights and luminaires.

As the phasing out of incandescent lamps progresses across Europe, alternatives are required. Sylvania's CFLi range, which meets – or exceeds – all relevant regulations, can be trusted to offer consumers affordable, efficient and effective lamps in a wide variety of sizes, shapes, outputs and designs.



Energy Saving

All Sylvania CFLi lamps save our customers up to 80% on energy compared to standard incandescent which equates to a similar saving on their energy bill.



No Liquid Mercury

Sylvania uses Amalgam in most of its lamps, which provides a more eco-friendly alternative to liquid mercury lamps.

Mini-Lynx Stick Range



Fast-Start

- Full light output achieved very quickly
- Reach 60% light output in under 30 seconds



Instant light

- Lamps illuminate instantly (<0.3 seconds)
- Achieves full illuminous flux in under one minute

Mini-Lynx Fast-Start Home

New Mini-Lynx Fast-Start Home range dispels the image that energy saving lamps are slow starting. These 8,000 hour lamps illuminate instantly (<0.3 seconds) and achieves full illuminous flux in under 30 seconds. This makes them ideal for use in bedrooms, bathrooms, sitting rooms and other living areas where instant light is required.

Features

- 8,000 hours life
- Instant light (<0.3 seconds)
- 30 seconds to 60% light output
- 5,000 switching cycles
- CRI >80
- <3mg mercury
- Available in 9W, 11W, 15W, 20W & 23W



Mini-Lynx Fast-Start

Mini-Lynx Fast-Start energy savers are different. These exceptionally compact fluorescent lamps have no unpleasant flicker or switch delay. They illuminate in less than two seconds, achieve full luminous flux in under 30 seconds and are available in a wide range of wattages and colours. Furthermore, with a rated lifetime of 10,000 hours, they are easy to fit...and forget.

Features

- Compact dimensions
- 10,000 hours life
- Flicker-free light in under 2 seconds
- 30 seconds to 60% light output
- 10,000 switching cycles
- CRI >80
- <3.5mg mercury
- Available in 5W, 8W, 11W, 15W, 20W & 23W



Mini-Lynx Compact FS

The Mini-Lynx Compact FS T2 lamps are Sylvania's smallest stick CFL lamps. Their size enables them to fit into almost any fixture whilst the absence of any flickering is gentle on the eyes.

Features

- Very compact dimensions
- 6,000 hours life
- Flicker-free light in under 2 seconds
- 60 seconds to 60% light output
- 10,000 switching cycles
- CRI >80
- <4mg mercury (< 3,5 mg mercury Jan 2012)
- Available in 5W, 7W, 9W, 11W & 15W



Mini-Lynx Spiral Range - Spiro, Spiro Superior & Power Lynx



**FAST
START**

Fast-Start

- Full light output achieved very quickly
- Reach 60% light output in under 30 seconds

Instant

Instant light

- Lamps illuminate instantly (<0.3 seconds)
- Achieves full illuminous flux in under one minute

Mini-Lynx Spiro

The Mini-Lynx Spiro design is more compact than the average CFL stick. This is important for fitting into a number of closed light fittings or lanterns where there is a bulb height restriction. By producing light within seconds of switch-on, these lamps are the perfect long life alternative to incandescent lamps.

Features

- Spiral design for better light distribution
- 10,000 hours life
- Flicker-free light in under 2 seconds
- 60 seconds to 60% light output
- 10,000 switching cycles
- CRI >80
- <3.5mg mercury
- Available in 8W, 12W, 15W, 20W & 23W

**FAST
START**



Mini-Lynx Spiro Superior

The new Mini-Lynx Spiro Superior address the widespread concerns of slow lamp start when it comes to using CFL's at home with their instant start feature (<0.3 seconds). For use in areas such as hotels, restaurants, and bars, where it is difficult to change the lamp or where an extended lifetime (15,000 hours) is needed, Sylvania's Mini-Lynx Spiro Superior is your best solution.

Features

- Spiral design for better light distribution
- 15,000 hours life
- Instant light (<0.3 seconds)
- 30 seconds to 60% light output
- 10,000 switching cycles
- CRI >80
- <1.6mg mercury
- Available in 5W, 7W, 11W, 15W, 20W & 23W



Instant



Power Lynx

The new Power Lynx shines at its best in areas with a high light output requirement. Replacing 140W and 270W lamps these energy savers are a great long life alternative.

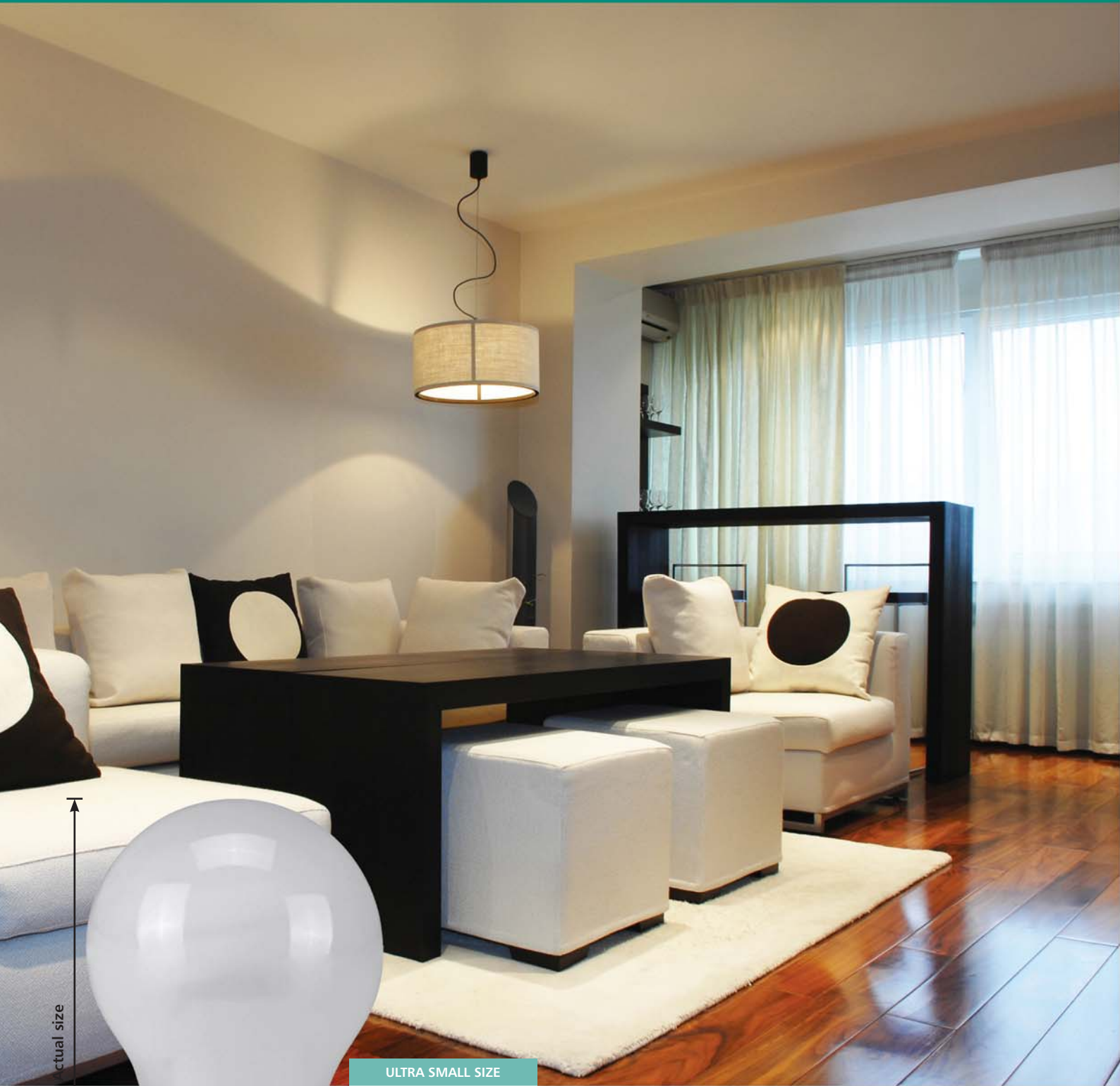
Features

- Spiral design for better light distribution
- 10,000 hours life
- Instant light (<0.3 seconds)
- 60 seconds to 60% light output
- 5,000 switching cycles
- CRI >80
- <3.5mg mercury
- Available in 30W & 40W

Instant



NEW Mini-Lynx Classico



actual size



ULTRA SMALL SIZE
93mm high x 55mm wide



All Around Illumination
No unsightly plastic base



Instant light
If dropped glass remains within plastic cover

Mini-Lynx Classico

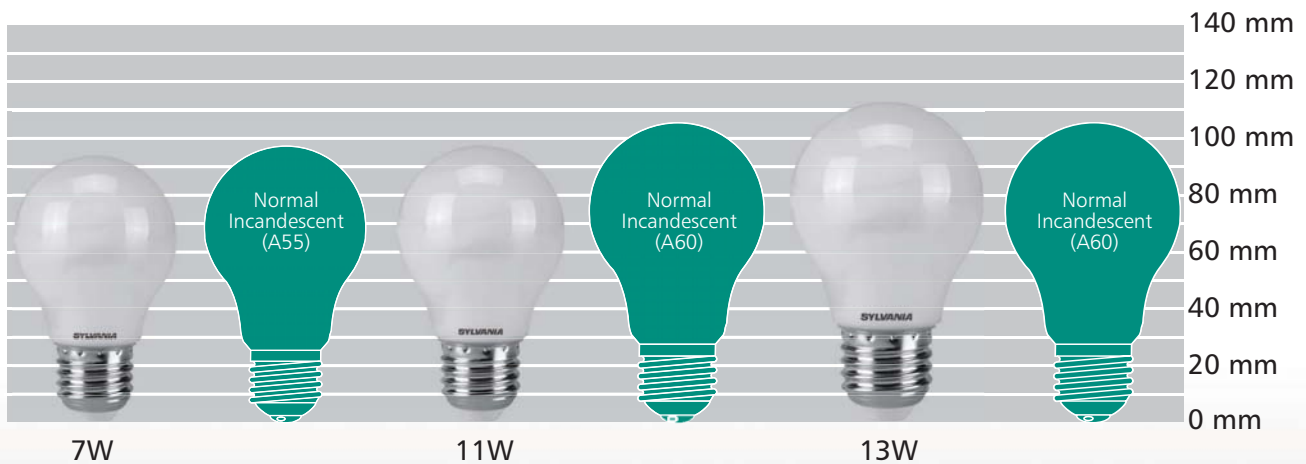
The new Mini-Lynx Classico 7W & 11W are exact size replacements for A55 & A60 incandescent GLS lamps. As today's decorative fittings are getting smaller and more compact, the Mini-Lynx Classico's smaller sizes make it ideal for residential environments. The improved cover design of this lamp removes the unsightly plastic base of previous models, ensuring all around illumination with no dark areas. Furthermore, being shatter resistant, applications such as childcare and food preparation areas are particularly relevant due to safety concerns.

Features

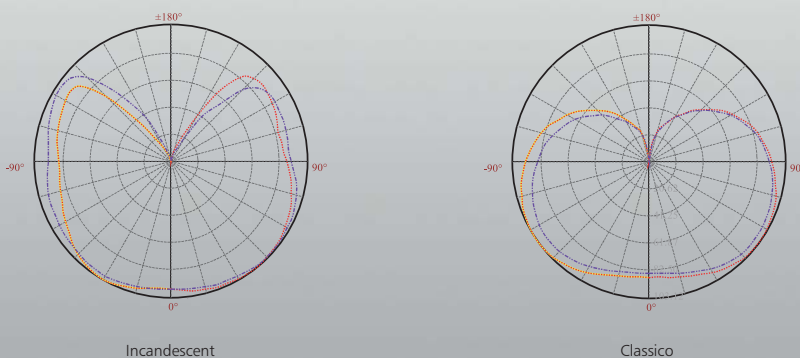
- A55 and A60 incandescent dimensions
- All around illumination
- Shatter resistant
- 8,000 hours life (7W, 11W) 10,000 hours life (13W)
- Flicker-free light in under 2 seconds
- 120 seconds to 60% light output
- 10,000 switching cycles
- CRI >80
- <3.5mg mercury
- Available in 7W, 11W & 13W



Size comparison versus standard incandescent



Similar but more stable light distribution than incandescent



Mini-Lynx GLS, Candle, Bent-tip, Ball & Globe



Mini-Lynx GLS

These GLS shaped lamps mimic the standard GLS shape and frosted finish whilst giving a high light output. Ideal for use in fixtures where the bulb will be seen.

Features

- 10,000 hours life
- Flicker-free light in under 2 seconds
- 60 seconds to 60% light output
- 10,000 switching cycles
- CRI >80
- <3.5mg mercury
- Available in 15W & 20W



Mini-Lynx Candle and Bent-Tip

These energy saving lamps look like opal incandescent candle lamps but last up to 10 times longer and consume up to 80% less energy. They can be used for accent lighting and chandeliers.

Features

- Compact dimensions
- 10,000 hours life
- Flicker-free light in under 2 seconds
- 120 seconds to 60% light output
- 10,000 switching cycles
- CRI >80
- <3.5mg mercury
- Available in 5W, 8W, 11W, 15W, 20W & 23W



Mini-Lynx Ball and Globe

These decorative sphere shaped energy savers last 10,000 hours, have great colour rendering and warm up to full-light output quickly. A first choice alternative in any application where a G50, A95 and A120 is needed.

Features

- 8,000 hours life (5W) 10,000 hours life (7-9W)
- Flicker-free light in under 2 seconds
- 60 seconds to 60% light output (Ball and 23W Globe)
- 100 seconds to 60% light output (20W Globe)
- CRI >80
- <3.5mg mercury
- Ball available in 5W, 7W & 9W
- Globe available in 20W & 23W



Mini-Lynx Reflectors, PAR30 & PAR38



Mini-Lynx GU10

Compact fluorescent technology can be found behind the frosted lamp cover of this GU10 base lamp, making it more energy efficient than its halogen alternative. Small in size with matt silver casing, this lamp is available in a variety of wattages and with a lifetime of 8,000 hours it last up to 2-3 times longer than its standard halogen alternative.

Features

- Low heat emission compared to halogen
- 8,000 hours life
- Flicker-free start in under 1 second
- 60 seconds to 60% light output
- 10,000 switching cycles
- CRI > 80
- < 5mg mercury (< 3,5 mg mercury Jan 2012)
- Available in 7W, 9W & 11W



Mini-Lynx R50, R63, R80

Effective for use as a spotlight or recessed light in place of a standard incandescent reflector.

Features

- Low heat emission compared to halogen and incandescent
- 10,000 hours life
- Flicker-free start in under 2 seconds
- 60 seconds to 60% light output
- 10,000 switching cycles
- CRI > 80
- < 5mg mercury (< 3,5 mg mercury Jan 2012)
- Available in 5W, 9W, 15W & 20W



Mini-Lynx PAR30 and PAR38

The new PAR30 and PAR38 reflector lamps complete the range of energy saving incandescent replacement lamps. Available in 827, Blue, Red, Green and Yellow.

Features

- Low heat emission compared to halogen and incandescent
- 10,000 hours life
- Flicker-free start in under 1 second
- 100 seconds to 60% light output
- 10,000 switching cycles
- CRI > 80
- < 2.3mg mercury
- Available in 827 (Blue, Red, Green and Yellow- PAR38)
- PAR 30 available in 15W,
- PAR 38 available in 23W



Micro-Lynx



**FAST
START**

Fast-Start

- Full light output achieved very quickly
- Reach 60% light output in under 30 seconds

Micro-Lynx F

Suitable for myriad domestic and office application, Micro-Lynx makes interiors come alive by complementing furniture demanding space and creating sublime ambience. The original Micro-Lynx product from Sylvania combines compact design with long-life and variety of colour options that suit many business or domestic applications.

Features

- Attractive ultra-flat design
- GX53 base
- 8,000 hours life
- Flicker-free start in under 1 second
- 30 seconds to 60% light output
- 5,000 switching cycles
- CRI >80
- <4 mg liquid mercury (<3.5 mg Jan 2012)
- Available in warm white, cool white
- Available in 6W

**FAST
START**



Mini-Lynx Luna

This GX53 product stands out from similar products on the market thanks to its striking stylish satin cover design. Coupled with even longer life, Micro-Lynx Luna is a ideal and attractive solution for a wide range of domestic and commercial applications.

Features

- GX53 base
- 10,000 hours life
- Flicker-free light in under 2 seconds
- 30 seconds to 60% light output
- 30,000 switching cycles
- CRI >80
- <4 mg liquid mercury (<3.5 mg Jan 2012)
- Available in warm white, cool white
- Available in 6W



Mini-Lynx Fast-Start Home



Code	Wattage (w)	Base	Colour	Colour in K	Lumens (lm)	Life (hrs)	Wattage Equivalent Sept 2010 (w)	Lamp Length (mm)	Lamp width (mm)	Qty per inner carton	Blister or Sleeve	Barcodes
0031509	9	E14	827	2700	475	8000	43	113	45	10	Sleeve	5410288315096
0031562	9	E14	840	4000	475	8000	43	113	45	10	Sleeve	5410288315621
0031563	9	E14	860	6500	445	8000	41	113	45	10	Sleeve	5410288315638
0031510	9	E27	827	2700	475	8000	43	111	45	10	Sleeve	5410288315102
0031564	9	E27	840	4000	475	8000	43	111	45	10	Sleeve	5410288315645
0031565	9	E27	860	6500	445	8000	41	111	45	10	Sleeve	5410288315652
0031511	11	E27	827	2700	645	8000	54	123	45	10	Sleeve	5410288315119
0031566	11	E27	840	4000	645	8000	54	123	45	10	Sleeve	5410288315669
0031567	11	E27	860	6500	600	8000	51	123	45	10	Sleeve	5410288315676
0031512	15	E27	827	2700	850	8000	67	136	45	10	Sleeve	5410288315126
0031568	15	E27	840	4000	850	8000	67	136	45	10	Sleeve	5410288315683
0031569	15	E27	860	6500	800	8000	64	136	45	10	Sleeve	5410288315690
0031513	20	E27	827	2700	1300	8000	94	156	45	10	Sleeve	5410288315133
0031570	20	E27	840	4000	1300	8000	94	156	45	10	Sleeve	5410288315706
0031571	20	E27	860	6500	1200	8000	88	156	45	10	Sleeve	5410288315713
0031514	23	E27	827	2700	1500	8000	106	174	45	10	Sleeve	5410288315140
0031572	23	E27	840	4000	1500	8000	106	174	45	10	Sleeve	5410288315720
0031573	23	E27	860	6500	1400	8000	100	174	45	10	Sleeve	5410288315737

Mini-Lynx Fast-Start



Code	Wattage (w)	Base	Colour	Colour in K	Lumens (lm)	Life (hrs)	Wattage Equivalent Sept 2010 (w)	Lamp Length (mm)	Lamp width (mm)	Qty per inner carton	Blister or Sleeve	Barcodes
0031140	5	E14	827	2700	250	10000	25	105	38	10	Sleeve	5410288311401
0031141	5	E27	827	2700	250	10000	25	105	38	10	Sleeve	5410288311418
0031142	8	E14	827	2700	450	10000	40	106	44	10	Blister	5410288311425
0031143	8	E14	827	2700	450	10000	40	106	44	10	Sleeve	5410288311432
0031144	8	E14	840	4000	450	10000	40	106	44	10	Sleeve	5410288311449
0031145	8	E27	827	2700	450	10000	40	106	44	10	Blister	5410288311456
0031146	8	E27	827	2700	450	10000	40	106	44	10	Sleeve	5410288311463
0031147	8	B22	827	2700	450	10000	40	106	44	10	Sleeve	5410288311470
0031148	8	E27	840	4000	450	10000	40	106	44	10	Sleeve	5410288311487
0031149	8	E27	860	6000	450	10000	40	106	44	10	Sleeve	5410288311494
0031150	11	E14	827	2700	600	10000	50	100	48	10	Blister	5410288311500
0031151	11	E14	827	2700	600	10000	50	100	48	10	Sleeve	5410288311845
0031152	11	E14	840	4000	600	10000	50	100	48	10	Sleeve	5410288311524
0031153	11	E14	860	6000	585	10000	50	100	48	10	Sleeve	5410288311531
0031184	11	B15	827	2700	600	10000	50	100	48	10	Sleeve	5410288311517
0031154	11	E27	827	2700	600	10000	50	100	48	10	Blister	5410288311548
0031155	11	E27	827	2700	600	10000	50	100	48	10	Sleeve	5410288311555
0031156	11	E27	840	4000	600	10000	50	100	48	10	Sleeve	5410288311562
0031157	11	E27	860	6000	585	10000	50	100	48	10	Sleeve	5410288311579
0031158	11	B22	827	2700	600	10000	50	100	48	10	Blister	5410288311586
0031159	11	B22	827	2700	600	10000	50	100	48	10	Sleeve	5410288311593
0031160	15	E27	827	2700	900	10000	70	112	48	10	Blister	5410288311609
0031161	15	E27	827	2700	900	10000	70	112	48	10	Sleeve	5410288311616
0031162	15	E27	840	4000	900	10000	70	112	48	10	Sleeve	5410288311623
0031163	15	E27	860	6000	875	10000	68	112	48	10	Sleeve	5410288311630
0031164	15	B22	827	2700	900	10000	70	112	48	10	Blister	5410288311647
0031165	15	B22	827	2700	900	10000	70	112	48	10	Sleeve	5410288311654
0031166	20	E27	827	2700	1200	10000	88	134	48	10	Blister	5410288311661
0031167	20	E27	827	2700	1200	10000	88	134	48	10	Sleeve	5410288311678
0031168	20	E27	840	4000	1200	10000	88	134	48	10	Sleeve	5410288311685
0031169	20	E27	860	6000	1200	10000	88	134	48	10	Sleeve	5410288311692
0031170	20	B22	827	2700	1200	10000	88	134	48	10	Blister	5410288311708
0031171	20	B22	827	2700	1200	10000	88	134	48	10	Sleeve	5410288311715

Code	Wattage (w)	Base	Colour	Colour in K	Lumens (lm)	Life (hrs)	Wattage Equivalent Sept 2010 (w)	Lamp Length (mm)	Lamp width (mm)	Qty per inner carton	Blister or Sleeve	Barcodes
0031172	23	E27	827	2700	1450	10000	103	150	48	10	Blister	5410288311722
0031173	23	E27	827	2700	1450	10000	103	150	48	10	Sleeve	5410288311739
0031174	23	E27	840	4000	1450	10000	103	150	48	10	Sleeve	5410288311746
0031175	23	E27	860	6000	1380	10000	99	150	48	10	Sleeve	5410288311753
0031176	23	B22	827	2700	1450	10000	103	150	48	10	Sleeve	5410288311760

Mini-Lynx Compact FS T2



Code	Wattage (w)	Base	Colour	Colour in K	Lumens (lm)	Life (hrs)	Wattage Equivalent Sept 2010 (w)	Lamp Length (mm)	Lamp width (mm)	Qty per inner carton	Blister or Sleeve	Barcodes
0031000	5	E14	827	2700	180	6000	20	87	38	10	Blister	5410288310008
0031001	5	E14	827	2700	180	6000	20	87	38	10	Sleeve	5410288310015
0031018	7	E14	827	2700	286	6000	30	92	38	10	Blister	5410288310183
0031019	7	E14	827	2700	286	6000	30	92	38	10	Sleeve	5410288310190
0031021	7	E27	827	2700	286	6000	30	90	38	10	Blister	5410288310213
0031022	9	E14	827	2700	405	6000	38	102	38	10	Sleeve	5410288310220
0031023	9	E14	827	2700	405	6000	38	102	38	10	Blister	5410288310237
0031027	9	E27	840	4000	405	6000	38	100	38	10	Sleeve	5410288310275
0031125	9	B22	827	2700	405	6000	38	102	38	10	Sleeve	5410288311258
0031028	11	E27	827	2700	540	6000	47	108	38	10	Sleeve	5410288310282
0031029	11	E27	827	2700	540	6000	47	108	38	10	Blister	5410288310299
0031032	11	E27	840	4000	540	6000	47	108	38	10	Blister	5410288310329
0031033	11	E27	840	4000	540	6000	47	108	38	10	Sleeve	5410288310336
0031036	15	E27	827	2700	800	6000	65	120	43	10	Blister	5410288310367
0031037	15	E27	827	2700	800	6000	65	120	43	10	Sleeve	5410288310374
0031040	15	E27	840	4000	800	6000	65	120	43	10	Blister	5410288310404
0031041	15	E27	840	4000	800	6000	65	120	43	10	Sleeve	5410288310411
0031127	15	E14	827	2700	800	6000	65	126	43	10	Sleeve	5410288311272

Mini-Lynx Spiro



Code	Wattage (w)	Base	Colour	Colour in K	Lumens (lm)	Life (hrs)	Wattage Equivalent Sept 2010 (w)	Lamp Length (mm)	Lamp width (mm)	Qty per inner carton	Blister or Sleeve	Barcodes
0031004	8	E14	827	2700	450	10000	41	89	46	10	Blister	5410288310046
0031005	8	E14	827	2700	450	10000	41	89	46	10	Sleeve	5410288310053
0031006	8	E27	827	2700	450	10000	41	84	46	10	Blister	5410288310060
0031007	8	E27	827	2700	450	10000	41	84	46	10	Sleeve	5410288310077
0031123	12	E14	827	2700	630	10000	53	94	46	10	Sleeve	5410288311234
0031008	12	E27	827	2700	630	10000	53	88	46	10	Blister	5410288310084
0031009	12	E27	827	2700	630	10000	53	88	46	10	Sleeve	5410288310091
0031010	12	B22	827	2700	630	10000	53	88	46	10	Blister	5410288310107
0031011	12	B22	827	2700	630	10000	53	88	46	10	Sleeve	5410288310114
0031012	15	E27	827	2700	845	10000	67	99	50	10	Blister	5410288310121
0031013	15	E27	827	2700	845	10000	67	99	50	10	Sleeve	5410288310138
0031014	15	B22	827	2700	845	10000	67	99	50	10	Blister	5410288310145
0031015	15	B22	827	2700	845	10000	67	99	50	10	Sleeve	5410288310152
0031016	15	E27	840	4000	845	10000	67	99	50	10	Blister	5410288310169
0031017	15	E27	840	4000	845	10000	67	99	50	10	Sleeve	5410288310176
0031249	20	E27	827	2700	1200	10000	88	108	54	10	Sleeve	5410288312491
0031250	20	E27	840	4000	1200	10000	88	108	54	10	Sleeve	5410288312507
0031252	20	E27	827	2700	1200	10000	88	108	54	10	Blister	5410288312521
0031138	20	B22	827	2700	1200	10000	88	108	54	10	Blister	5410288311388
0031139	20	E27	827	2700	1200	10000	88	108	54	10	Sleeve	5410288311395
*0031517	23	E27	827	2700	1400	10000	100	123	55	10	Blister	5410288315171
0031518	23	E27	827	2700	1400	10000	100	123	55	10	Sleeve	5410288315188

*Available on request. Terms and conditions apply

Mini-Lynx Spiro Superior



Code	Wattage (w)	Base	Colour	Colour in K	Lumens (lm)	Life (hrs)	Wattage Equivalent Sept 2010 (w)	Lamp Length (mm)	Lamp width (mm)	Qty per inner carton	Blister or Sleeve	Barcodes
*0031440	5	E14	827	2700	300	15000	27	97	35	10	Blister	5410288314402
0031441	5	E14	827	2700	300	15000	27	97	36	10	Sleeve	5410288314419
*0031442	7	E14	827	2700	430	15000	40	106	35	10	Blister	5410288314426
0031443	7	E14	827	2700	430	15000	40	106	35	10	Sleeve	5410288314433
*0031444	7	E27	827	2700	430	15000	40	100	35	10	Blister	5410288314440
0031445	7	E27	827	2700	430	15000	40	100	35	10	Sleeve	5410288314457
0031446	11	E14	827	2700	730	15000	59	110	46	10	Sleeve	5410288314464
*0031447	11	E27	827	2700	730	15000	59	104	46	10	Blister	5410288314471
0031448	11	E27	827	2700	730	15000	59	104	46	10	Sleeve	5410288314488
*0031449	11	B22	827	2700	730	15000	59	103	46	10	Blister	5410288314495
*0031450	11	B22	827	2700	730	15000	59	103	46	10	Sleeve	5410288314501
*0031451	15	E27	827	2700	1030	15000	79	114	54	10	Blister	5410288314518
0031452	15	E27	827	2700	1030	15000	79	114	54	10	Sleeve	5410288314525
*0031453	15	B22	827	2700	1030	15000	79	113	54	10	Blister	5410288314532
*0031454	15	B22	827	2700	1030	15000	79	113	54	10	Sleeve	5410288314549
*0031455	15	E27	840	4000	1010	15000	77	114	54	10	Blister	5410288314556
0031456	15	E27	840	4000	1010	15000	77	114	54	10	Sleeve	5410288314563
*0031457	20	E27	827	2700	1350	15000	97	123	54	10	Blister	5410288314570
0031458	20	E27	827	2700	1350	15000	97	123	54	10	Sleeve	5410288314587
*0031459	20	E27	840	4000	1320	15000	95	123	54	10	Sleeve	5410288314594
*0031460	20	B22	827	2700	1350	15000	97	122	54	10	Blister	5410288314600
0031622	20	B22	827	2700	1350	15000	97	122	54	10	Sleeve	5410288316222
*0031461	23	E27	827	2700	1550	15000	109	127	54	10	Blister	5410288314617
0031462	23	E27	827	2700	1550	15000	109	127	54	10	Sleeve	5410288314624

*Available on request. Terms and conditions apply

Power Lynx



Code	Wattage (w)	Base	Colour	Colour in K	Lumens (lm)	Life (hrs)	Wattage Equivalent Sept 2010 (w)	Lamp Length (mm)	Lamp width (mm)	Qty per inner carton	Blister or Sleeve	Barcodes
0031325	30	E27	827	2700	2100	10000	141	174	67	10	Sleeve	5410288313252
0031327	30	E27	840	4000	2100	10000	141	174	67	10	Sleeve	5410288313276
0031329	30	E27	860	6500	2100	10000	141	174	67	10	Sleeve	541028313290
0031326	40	E27	827	2700	2835	10000	182	188	67	10	Sleeve	5410288313269
0031328	40	E27	840	4000	2835	10000	182	188	67	10	Sleeve	5410288313283
0031330	40	E27	860	6600	2680	10000	173	188	67	10	Sleeve	5410288313306

Mini-Lynx Classico



Code	Wattage (w)	Base	Colour	Colour in K	Lumens (lm)	Life (hrs)	Wattage Equivalent Sept 2010 (w)	Lamp Length (mm)	Lamp width (mm)	Qty per inner carton	Blister or Sleeve	Barcodes
*0031495	7	E27	827	2700	286	8000	30	93	56	10	Blister	5410288314952
0031496	7	E27	827	2700	286	8000	30	93	56	10	Sleeve	5410288314969
*0031499	11	E27	827	2700	531	8000	47	99	60	10	Blister	5410288314990
0031500	11	E27	827	2700	531	8000	47	99	60	10	Sleeve	5410288315003
*0031501	11	E27	840	4000	531	8000	47	99	60	10	Sleeve	5410288315010
*0031502	11	B22	827	2700	531	8000	47	99	60	10	Blister	5410288315027
*0031503	11	B22	827	2700	531	8000	47	99	60	10	Sleeve	5410288315034
*0031504	13	E27	827	2700	700	8000	58	112	69	10	Blister	5410288315041
0031505	13	E27	827	2700	700	8000	58	112	69	10	Sleeve	5410288315058
*0031506	13	E27	840	4000	700	8000	58	112	69	10	Sleeve	5410288315065
*0031507	13	B22	827	2700	700	8000	58	112	69	10	Blister	5410288315072
*0031508	13	B22	827	2700	700	8000	58	112	69	10	Sleeve	5410288315089

*Available on request. Terms and conditions apply

Mini-Lynx GLS



Code	Wattage (w)	Base	Colour	Colour in K	Lumens (lm)	Life (hrs)	Wattage Equivalent Sept 2010 (w)	Lamp Length (mm)	Lamp width (mm)	Qty per inner carton	Blister or Sleeve	Barcodes
0031072	15	E27	827	2700	810	10000	65	130	64	10	Blister	5410288310725
0031073	15	E27	827	2700	810	10000	65	130	64	10	Sleeve	5410288310732
0031074	15	B22	827	2700	810	10000	65	130	64	10	Blister	5410288310749
0031075	15	B22	827	2700	810	10000	65	130	64	10	Sleeve	5410288310756
0031076	15	E27	840	4000	810	10000	65	130	64	10	Blister	5410288310763
0031077	15	E27	840	4000	810	10000	65	130	64	10	Sleeve	5410288310770
0031211	20	B22	827	2700	1152	10000	86	149	75	10	Sleeve	5410288312118
0031212	20	E27	827	2700	1152	10000	86	149	75	10	Blister	5410288312125
0031213	20	E27	827	2700	1152	10000	86	149	75	10	Sleeve	5410288312132
0031121	20	B22	827	4000	1152	10000	86	149	75	10	Blister	5410288311210
0031122	20	E27	840	4000	1152	10000	86	149	75	10	Blister	5410288311227

*Available on request. Terms and conditions apply

Mini-Lynx Compact Candle



Code	Wattage (w)	Base	Colour	Colour in K	Lumens (lm)	Life (hrs)	Wattage Equivalent Sept 2010 (w)	Lamp Length (mm)	Lamp width (mm)	Qty per inner carton	Blister or Sleeve	Barcodes
*0031471	5	E14	827	2700	230	10000	26	101	39	10	Blister	5410288314716
0031472	5	E14	827	2700	230	10000	26	101	39	10	Sleeve	5410288314723
0031473	5	E14	840	4000	230	10000	26	101	39	10	Sleeve	5410288314730
0031474	5	E27	827	2700	230	10000	26	100	39	10	Sleeve	5410288314747
*0031475	5	B22	827	2700	230	10000	26	100	39	10	Sleeve	5410288314754
0031476	7	E14	827	2700	300	10000	31	106	39	10	Blister	5410288314761
0031477	7	E14	827	2700	300	10000	31	106	39	10	Sleeve	5410288314778
0031574	7	E14	840	2700	300	10000	31	106	39	10	Sleeve	5410288315744
*0031478	7	E27	827	2700	300	10000	31	105	39	10	Blister	5410288314785
0031479	7	E27	827	2700	300	10000	31	105	39	10	Sleeve	5410288314792
*0031480	7	B22	827	2700	300	10000	31	105	39	10	Blister	5410288314808
*0031481	7	B22	827	2700	300	10000	31	105	39	10	Sleeve	5410288314815
0031482	9	E14	827	2700	405	10000	38	111	39	10	Blister	5410288314822
0031483	9	E14	827	2700	405	10000	38	111	39	10	Sleeve	5410288314839
0031484	9	E27	827	2700	405	10000	38	110	39	10	Blister	5410288314846
0031485	9	E27	827	2700	405	10000	38	110	39	10	Sleeve	5410288314853
0031486	9	E27	840	4000	405	10000	38	110	39	10	Sleeve	5410288314860
*0031487	9	E14	840	4000	405	10000	38	111	39	10	Blister	5410288314877
0031488	9	E14	840	4000	405	10000	38	111	39	10	Sleeve	5410288314884
*0031489	9	B22	840	4000	405	10000	38	110	39	10	Sleeve	5410288314891
*0031490	9	B22	827	2700	405	10000	38	110	39	10	Sleeve	5410288314907

*Available on request. Terms and conditions apply

Mini-Lynx Bent-tip



Code	Wattage (w)	Base	Colour	Colour in K	Lumens (lm)	Life (hrs)	Wattage Equivalent Sept 2010 (w)	Lamp Length (mm)	Lamp width (mm)	Qty per inner carton	Blister or Sleeve	Barcodes
*0031491	7	E14	827	2700	300	10000	31	132	39	10	Blister	5410288314914
0031492	7	E14	827	2700	300	10000	31	132	39	10	Sleeve	5410288314921
*0031493	9	E14	827	2700	405	10000	38	132	39	10	Blister	5410288314938
0031494	9	E14	827	2700	405	10000	38	132	39	10	Sleeve	5410288314945

*Available on request. Terms and conditions apply

Mini-Lynx Ball



Code	Wattage (w)	Base	Colour	Colour in K	Lumens (lm)	Life (hrs)	Wattage Equivalent Sept 2010 (w)	Lamp Length (mm)	Lamp width (mm)	Qty per inner carton	Blister or Sleeve	Barcodes
0031054	5	E14	827	2700	230	8000	25	86	45	10	Blister	5410288310541
0031055	5	E14	827	2700	230	8000	25	86	45	10	Sleeve	5410288310558
0031118	7	E14	827	2700	330	10000	33	95	50	10	Sleeve	5410288311180
0031056	7	E27	827	2700	330	10000	33	91	50	10	Blister	5410288310565
0031057	7	E27	827	2700	330	10000	33	91	50	10	Sleeve	5410288310572
0031058	7	B22	827	2700	330	10000	33	91	50	10	Blister	5410288310589
0031059	7	B22	827	2700	330	10000	33	91	50	10	Sleeve	5410288310596
0031060	9	E14	827	2700	432	10000	40	103	50	10	Blister	5410288310602
0031061	9	E14	827	2700	432	10000	40	103	50	10	Sleeve	5410288310619
0031116	9	E14	840	4000	432	10000	40	103	50	10	Sleeve	5410288311166
0031062	9	E27	827	2700	432	10000	40	98	50	10	Blister	5410288310626
0031063	9	E27	827	2700	432	10000	40	98	50	10	Sleeve	5410288310633
0031064	9	E27	840	4000	432	10000	40	98	50	10	Sleeve	5410288310640
0031065	9	B22	827	2700	432	10000	40	98	50	10	Sleeve	5410288310657

Mini-Lynx Globe



Code	Wattage (w)	Base	Colour	Colour in K	Lumens (lm)	Life (hrs)	Wattage Equivalent Sept 2010 (w)	Lamp Length (mm)	Lamp width (mm)	Qty per inner carton	Blister or Sleeve	Barcodes
*0031463	20	E27	827	2700	1152	10000	86	140	95	10	Blister	5410288314631
0031464	20	E27	827	2700	1152	10000	86	140	95	10	Sleeve	5410288314648
*0031465	23	E27	827	2700	1420	10000	101	170	120	10	Blister	5410288314655
0031466	23	E27	827	2700	1420	10000	101	170	120	10	Sleeve	5410288314662

*Available on request. Terms and conditions apply

Mini-Lynx Reflectors



Code	Wattage (w)	Base	Colour	Colour in K	Lumens (lm)	Life (hrs)	Wattage Equivalent Sept 2010 (w)	Lamp Length (mm)	Lamp width (mm)	Qty per inner carton	Blister or Sleeve	Barcodes
0031046	7	GU10	827	2700	210	8000	N/A	82	50	10	Blister	5410288310466
0031047	7	GU10	827	2700	210	8000	N/A	82	50	10	Sleeve	5410288310473
0031048	9	GU10	827	2700	235	8000	N/A	82	50	10	Blister	5410288310480
0031049	9	GU10	827	2700	235	8000	N/A	82	50	10	Sleeve	5410288310497
0031050	11	GU10	827	2700	265	8000	N/A	90	50	10	Blister	5410288310503
0031051	11	GU10	827	2700	265	8000	N/A	90	50	10	Sleeve	5410288310510
0031052	11	GU10	840	4000	265	8000	N/A	90	50	10	Blister	5410288310527
0031053	11	GU10	840	4000	265	8000	N/A	90	50	10	Sleeve	5410288310534
0031119	5	E14	827	2700	165	10000	N/A	85	50	10	Blister	5410288311197
0031120	5	E14	827	2700	165	10000	N/A	85	50	10	Sleeve	5410288311203
0031106	9	E14	827	2700	270	10000	N/A	105	63	10	Blister	5410288311067
0031107	9	E14	827	2700	270	10000	N/A	105	63	10	Sleeve	5410288311074
0031108	9	E27	827	2700	270	10000	N/A	105	63	10	Blister	5410288311081
0031109	9	E27	827	2700	270	10000	N/A	105	63	10	Sleeve	5410288311098
0031112	15	E27	827	2700	645	10000	N/A	122	80	10	Blister	5410288311128
0031113	15	E27	827	2700	645	10000	N/A	122	80	10	Sleeve	5410288311135
0031114	20	E27	827	2700	675	10000	N/A	132	80	10	Blister	5410288311142
0031115	20	E27	827	2700	675	10000	N/A	132	80	10	Sleeve	5410288311159

PAR 30 & 38



Code	Wattage (w)	Base	Colour	Colour in K	Lumens (lm)	Life (hrs)	Lamp Length (mm)	Lamp width (mm)	Qty per inner carton	Blister or Sleeve	Barcodes
*0031467	15	E27	827	2700	700	10000	120	95	10	Blister	5410288314679
0031468	15	E27	827	2700	700	10000	120	95	10	Sleeve	5410288314686
*0031469	23	E27	827	2700	1200	10000	131	121	10	Blister	5410288314693
0031470	23	E27	827	2700	1200	10000	131	121	10	Sleeve	5410288314709
0060535	23	E27	Red**			10000	131	121	10	Sleeve	5410288605357
0060536	23	E27	Green**			10000	131	121	10	Sleeve	5410288605364
0060537	23	E27	Yellow**			10000	131	121	10	Sleeve	5410288605371
0060538	23	E27	Blue**			10000	131	121	10	Sleeve	5410288605388

*Available on request. Terms and conditions apply
** Not for general lighting applications

Micro-Lynx F



Code	Wattage (w)	Base	Colour	Colour in K	Lumens (lm)	Life (hrs)	Lamp Length (mm)	Lamp width (mm)	Qty per inner carton	Blister or Sleeve	Barcodes
0025214	6	GX53	827	2700	230	8000	24.5	75	20	Sleeve	5410288252148
0025218	6	GX53	830	3000	230	8000	24.5	75	20	Sleeve	5410288252186
0025219	6	GX53	840	4000	230	8000	24.5	75	20	Sleeve	5410288252193

Micro-Lynx Luna



Code	Wattage (w)	Base	Colour	Colour in K	Lumens (lm)	Life (hrs)	Lamp Length (mm)	Lamp width (mm)	Qty per inner carton	Blister or Sleeve	Barcodes
0025477	6	GX53	830	3000	235	10000	28	75	20	Sleeve	5410288254777
0025478	6	GX53	840	4000	235	10000	28	75	20	Sleeve	5410288254784



Try our new online calculator and see the savings you could achieve.
www.sylvania-lamps.com

EUROPE

Head Office
London
hospitality@havells-sylvania.com

Austria

Vienna
T. +43 (0)1617 4480
F. +43 (0)1617 4481
info.at@havells-sylvania.com

Belgium

Antwerp
T. +32 (0)3 610 44 44
F. +32 (0)3 610 44 57
info.be@havells-sylvania.com

Czech Republic and Slovakia

Brno
T. +420 545 231 345
F. +420 545 231 346
info.cz@havells-sylvania.com

Finland

Helsinki
T. +358 (0)9 5421 2100
F. +358 (0)9 5421 2130
info.fi@havells-sylvania.com

France

Paris
T. +33 (0)1 55 51 11 00
F. +33 (0)1 55 51 11 15
info.fr@havells-sylvania.com

Germany

Erlangen
T. +49 (0) 9131 793 0
F. +49 (0) 9131 793 345
info.de@havells-sylvania.com

Greece

Athens
T. +30 210 996 65 61
F. +30 210 996 90 29
info.gr@havells-sylvania.com

Hungary

Budapest
T. +36 (30) 50 69 182
F. +36 (24) 423 563
info.hu@havells-sylvania.com

Italy

Milan
T. +39 02 24 12 58 11
F. +39 02 24 12 58 80
info.it@havells-sylvania.com

Netherlands

Breda
T. +31 (0)76 750 44 44
F. +31 (0)76 750 44 56
info.nl@havells-sylvania.com

Norway

Oslo
T. +47 23 067470
F. +47 23 067471
info.no@havells-sylvania.com

Poland

Warsaw
T. +48 22 811 60 32
F. +48 22 811 60 33
info.pl@havells-sylvania.com

Portugal

Lisbon
T. +351 21 793 77 36/37
F. +351 21 793 77 38
info.pt@havells-sylvania.com

Russia

Moscow
T. +7 495 935 70 48
F. +7 495 937 70 08
info.ru@havells-sylvania.com

South East Europe

Serbia, Croatia, Slovenia, Albania,
Montenegro, Bosnia and
Herzegovina, Bulgaria, Romania,
Macedonia
Belgrade
T. +381 (0)63 617 716
F. +381 (0)11 2398 305
info.see@havells-sylvania.com

Spain

Madrid
T. +34 91 669 90 00
F. +34 91 673 73 64
info.es@havells-sylvania.com

Sweden

Stockholm
T. +46 8 556 322 00
F. +46 8 556 322 10
info.se@havells-sylvania.com

Switzerland

Zurich
T. +41 44305 31 80
F. +41 44305 31 81
info.ch@havells-sylvania.com

Turkey

Istanbul
T. +90 212 343 46 10
F. +90 212 343 46 10
M. +90 533 934 87 17
info.tr@havells-sylvania.com

UK

Newhaven
T. +44 870 606 2030
F. +44 1273 512 688
info.uk@havells-sylvania.com
info.concord@havells-sylvania.com

MIDDLE EAST

United Arab Emirates

Dubai
T. +971 4 2998141
F. +971 4 2998142
info.ae@havells-sylvania.com

ASIA

China

Guangzhou
T. +86 20 3815 1138
F. +86 20 3869 7572
info.cn@havells-sylvania.com

India

Noida
T. +91 120 477 1000
F. +91 120 477 2000
marketing@havells.com

Malaysia

Kuala Lumpur
T. +603 2031 8788
F. +603 2031 4788
info.my@havells-sylvania.com

Thailand

Bangkok
T. +66 2656 9039
F. +66 2254 3369
info.th@havells-sylvania.com

Vietnam

Hanoi
T. +844 37 151 604
F. +844 37 151 605
info.vn@havells-sylvania.com

AMERICAS

Argentina / Paraguay / Uruguay

Buenos Aires
T + 54 11 4546 4200
F + 54 11 4546 4228
info.ar@havells-sylvania.com

Brazil

São Paulo
T. +55 11 3133 2400
F. +55 11 5521 3660
info.br@havells-sylvania.com

Caribbean

Honduras, Nicaragua
San José
T. +506 22 107 678
F. +506 22 328 723
info.cr@havells-sylvania.com

Chile

Santiago
T + 56 2 365 1767
F + 56 2 365 1772
info.cl@havells-sylvania.com

Colombia

Santafé de Bogota
T. +57 1 782 5200
F. +57 1 719 9621
info.co@havells-sylvania.com

Costa Rica

San José
T. +506 22 107 678
F. +506 22 200 338
sales@havells-sylvania.com

Ecuador

Quito
T. +593 2 328 4407
F. +593 2 281 0007
info.ec@havells-sylvania.com

El Salvador

San Salvador
T. +503 2239 2239
F. +503 2284 9670
info.sv@havells-sylvania.com

Guatemala

Guatemala City
T. +502 2387 5300
F. +502 2387 5301
info.gt@havells-sylvania.com

Mexico

Mexico D.F.
T. +52 55 5387 7670
F. +52 55 5387 7671
info.mx@havells-sli.com

Panama

Panama City
T. +507 236 1000
F. +507 236 1315
info.pa@havells-sylvania.com

USA

Atlanta, GA
T. +001 6784 203700
F. +001 4043 492434
www.havells-usa.com

Venezuela

Caracas
T. +58 212 381 0452
F. +58 212 381 0350
info.ve@havells-sylvania.com