

RIGPOWER, LLC

Creating New Industry Standards



- Rated Up to 1,135 Amps @ 1,000 Volts AC/DC
- IP68 Ingress Protection and with Deluge Protection up to DTS01:91
- Utilizes Number 24 Shell
- Also available in an Explosion Proof Version, see MCC-1 EX Catalog



RigPower, LLC's mission is to create new industry standards in industrial electrical connectors by combining appropriate technological advances, quality production methods and dependable customer support.

Applications

RigPower, LLC's MCC-1 Series Single Pole High Amperage Connectors are designed specifically with the requirements of the drilling industry in mind. These products are designed to deliver up to 1,000 Volts, AC or DC, and up to 1,135 Amps of continuous power in the most extreme conditions. Typical applications are: connection of power from generator sets to Switchgear or SCR (silicon controlled rectifiers) controls, or from the control house to traction motors, mud pumps, draw-works, rotary tables, cement pumps and top drives.

Ampacity Ratings in 40° Ambient		
Cable Size	90° C	125° C
4/0 MCM	364 AMPS	451 AMPS
313 MCM	513 AMPS	636 AMPS
373 MCM	548 AMPS	669 AMPS
444 MCM	642 AMPS	796 AMPS
535 MCM	724 AMPS	898 AMPS
646 MCM	814 AMPS	1009 AMPS
777 MCM	916 AMPS	1135 AMPS

Type P Cables

The MCC Series connectors are designed to work in conjunction with the latest generation of Type P drilling cables, per IEEE 45. Cable accommodations are from 4/0 MCM to 777 MCM. Metric cable sized contacts are available on request.

Sealing

MCC-1 Series plugs and connectors have internal seals which prevent water intrusion even if the caps are left off. Competitor's plugs and receptacles allow easy ingress of moisture, causing shorting of the connector to the case. This destroys the connector and presents a dangerous safety hazard.

Design & Performance Highlights

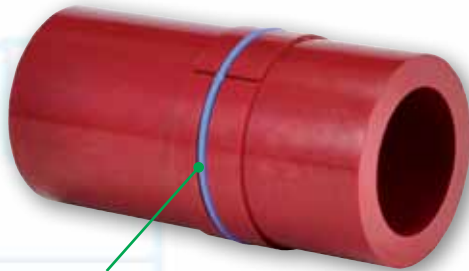
The advanced design techniques utilized by RigPower, LLC have allowed us to design in two O-Rings (Contact to Insulator and Insulator to Cable Adapter) at the optimum locations to create a water tight seal.

- Rated for 1,135 Amps continuous at 1,000 volts, AC/DC
- Rugged machined aluminum shell with a hard anodized coating is resistant to salt corrosion, drilling mud, humidity, moisture, oil and dust
- Heavy-Duty ACME Threaded Coupling permits positive and quick engagement even under harsh conditions
- Totally shrouded contact design and a dead front tip on both the male and female contact improves operator safety by eliminating exposed, live surfaces
- Low Mating & Unmating Force permits ease of insertion and withdrawal. Available with the customer's choice of female contact with the standard "C" spring design or RigPower, LLC's advanced "Multilam" design
- Copper Alloy, Sn Plated Contacts and Buss Bars provide maximum conductivity
- All contacts use the same crimping die sets as the RigPower, LLC "RMP®II, Secure Mount®, Safe Stab®, VFD-1®, HP20 and MC20" series connectors
- Ingress Protection IP68 in mated condition or with protective cover in place
- Color Coding Option for positive phase identification

Special Product Note: The MCC-1 series advanced design allows for the REMOVAL OF THE KEY on all RigPower, LLC plugs. This eliminates the required twisting of heavy cable to align the key before mating the plug to the corresponding component. With the MCC-1 series just push the plug into any existing competitive receptacle or In-line receptacle, screw the coupling nut down, and you're ready to go. The MCC-1 is 100% intermateable with existing brands. We improved the products, made them easier to work with, and increased the safety factor.

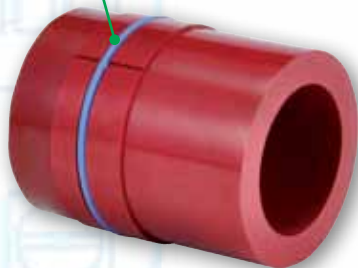


Male Contact Insulator



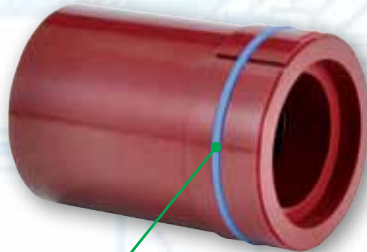
INDUSTRY EXCLUSIVE

Each contact and receptacle insulator has an O-Ring Seal designed into the body which offers improved mounting between the insulator and cable adapter shell and receptacle housing. Additionally, the O-Ring provides a water tight seal so that the component won't have the propensity to short or burn out, even when the cap is not installed.



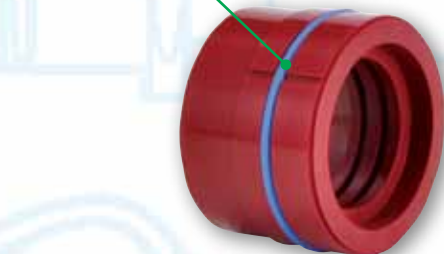
Male Buss Bar Insulator

Female Contact Insulator



INDUSTRY EXCLUSIVE

Each contact and receptacle insulator has an O-Ring Seal designed into the body which offers improved mounting between the insulator and cable adapter shell and receptacle housing. Additionally, the O-Ring provides a water tight seal so that the component won't have the propensity to short or burn out, even when the cap is not installed.



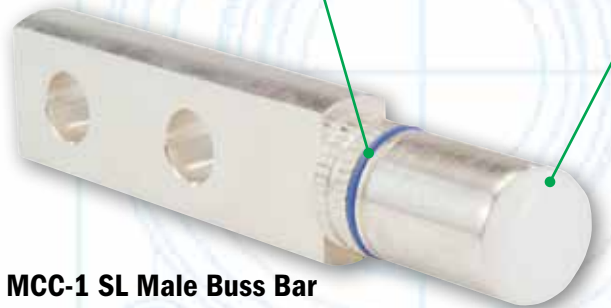
Female Buss Bar and 4/0 Contact Insulator

Advanced Crimping System

The MCC-1 Series connectors are designed to use the standard hex crimp seen on all RigPower, LLC products. This standard crimp design provides a more robust and durable crimp and standardizes the tools needed. One set of four hex die sizes will accommodate all RigPower contacts from 4/0 to 777 MCM cables.

INDUSTRY EXCLUSIVE

Each contact and buss bar has an O-Ring Seal designed into the body which offers improved mounting between the electrical component and the insulator. Additionally, the O-Ring provides a water tight seal so that the component won't have the propensity to short or burn out, even when the cap is not installed.



MCC-1 SL Male Buss Bar

Advanced Crimping System

The MCC-1 Series connectors are designed to use the standard hex crimp seen on all RigPower, LLC products. This standard crimp design provides a more robust and durable crimp and standardizes the tools needed. One set of four hex die sizes will accommodate all RigPower contacts from 4/0 to 777 MCM cables.

MCC-1 SL Female Buss Bar



INDUSTRY EXCLUSIVE

Each contact and buss bar has an O-Ring Seal designed into the body which offers improved mounting between the electrical component and the insulator. Additionally, the O-Ring provides a water tight seal so that the component won't have the propensity to short or burn out, even when the cap is not installed.



MCC-1 SL Female Double Hole Set Screw 4/0 Contact

Specially built contact accommodates two 4/0 cables that are locked in place with pressure set screws. A large rubber grommet at the rear of the adapter has two holes sized for 4/0 cables and is held in place with a #28 washer and cable clamp.

NOTE: The SL contacts and buss bars are designed to be compatible with the standard Star-Line® TMPC™ style components. They are manufactured from high quality copper and are Sn plated for maximum conductivity and corrosion resistance. Rated for 1,135 amps at 1,000 volts AC/DC.

*Star-Line® and TMPC™ are Registered Trademarks of Amphenol Corporation

MCC-1 SL Male Contact

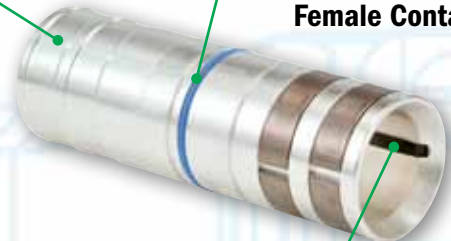


The Contacts and Buss Bars are Sn plated high conductivity copper. Both the male components have a dead front end to protect operators from shock hazard. Connectors are rated for 1,135 amps at 1,000 volts, AC or DC, with the ability to withstand intermittent surges up to 1,300 amps.

INDUSTRY EXCLUSIVE

Each contact and buss bar has an O-Ring Seal designed into the body which offers improved mounting between the electrical component and the insulator. Additionally, the O-Ring provides a water tight seal so that the component won't have the propensity to short or burn out, even when the cap is not installed.

MCC-1 SL Female Contact



Female Buss Bar and contact connectors are designed to be compatible with standard Star-Line® TMPC™ style contacts. They are manufactured from high quality copper and are plated for maximum conductivity and corrosion resistance. Rated for 1,135 amps at 1,000 volts AC/DC.

The MCC-1 Series receptacles have two keyways to accept other manufacturer's standard two key plugs.

Male Receptacle – Sn plated high conductivity copper. The male buss bars have a dead front end to protect operators from shock hazard. Connectors are rated at 1000 volts, AC or DC, with the ability to withstand intermittent surges up to 1,300 Amps.

MCC-1 SL Male Receptacle

30° – 45° Reversible Locking Buss Bar Lug

INDUSTRY EXCLUSIVE
 Locks in position at 30° or 45°

Receptacle Gasket – Neoprene Mounting Gasket provided.

Receptacle Cap

- Heavy duty stainless steel chain and clips to prevent loss of cap
- Powder Coated for easier phase identification at hook-up

MCC-1 SL Female Receptacle

Receptacle Gasket – Neoprene Mounting Gasket provided.

The MCC-1 Series receptacles have two keyways to accept other manufacturer's standard two key plugs.

The Female buss bar connectors are designed to be compatible with standard Star-Line® TMPC™ style contacts. They are manufactured from high quality copper and are Sn plated for maximum conductivity and corrosion resistance. Rated for 1,135 amps at 1,000 volts AC/DC.

Receptacle Cap

- Heavy duty stainless steel chain and clips to prevent loss of cap
- Powder Coated for easier phase identification at hook-up

MCC-1 Series connectors are available in eight standard colors with durable powder coating.

* Purple and Gray available upon special request.

If additional colors are desired, the option is provided from RigPower to powder coat two color bands on each connector. This allows over forty unique color combinations to ensure proper connections to multiple pieces of equipment.

MCC-1 SL Female Double Hole Set Screw 4/0 Contact

Specially built contact accommodates two 4/0 cables that are locked in place with pressure set screws. A large rubber grommet at the rear of the adapter has two holes sized for 4/0 cables and is held in place with a #28 washer and cable clamp.

MCC-1 SL Female Receptacle Cable Adapter with Double Hole 4/0 contact

Standard SL #24 Front End

Special #24 Flange with #28 thread in back to accommodate large shell and double hole contact.

#28 Shell & Cable Clamp



INDUSTRY EXCLUSIVE

Plug Cap – Fully powder coated, helps protect roughnecks by identifying proper phase color easily, up close or from a distance. Heavy duty stainless steel chain and clips to prevent loss of cap.

MCC-1 SL Female In-line Receptacle



Cable Plugs can accommodate either a Mechanical Cable Clamp or Kellems® Grip.

INDUSTRY EXCLUSIVE

Cable Adapter – Robust grip with knurling for easy assembly and handling. Fully powder coated.

MCC-1 In-line Plug has two keyways to accept other manufacturer's standard two key plugs.

Female In-line Receptacles. Connectors are rated for 1,135 amps at 1000 volts, AC or DC, with the ability to withstand intermittent surges up to 1,300 amps.

INDUSTRY EXCLUSIVE

Cable Adapter – Robust grip with knurling for easy assembly and handling. Fully powder coated.

MCC-1 SL Male Plug

INDUSTRY EXCLUSIVE

Coupling Nut – The Coupling Nut also has a robust hex design at the rear for easier cable-to-receptacle connections or cable-to-cable connection.



Cable Plugs can accommodate either a Mechanical Cable Clamp or Kellems® Grip.

MCC-1 Series Plug connectors have no keyway. This allows MCC-1 plugs to be inserted into any competitor's receptacle without trying to rotate stiff DLO sized cables.

Male Plug – Sn plated high conductivity copper contact. All male plugs and receptacles have a dead front end to protect operators from shock hazard. Connectors are rated for 1,135 amps at 1,000 volts AC or DC with the ability to withstand intermittent surges up to 1,300 Amps.

INDUSTRY EXCLUSIVE

Plug Cap – Fully powder coated, helps protect operators by identifying proper phase color easily, up close or from a distance. Heavy duty stainless steel chain and clips to prevent loss of cap.

MCC-1 SL In-line Connection



MCC-1 SL Fixed Cable Receptacle

MCC-1 SL Plug

*Star-Line®, TMPC™ and Radsok® are Registered Trademarks of Amphenol Corporation

*Kellems®, is a Registered Trademark of Hubbell Inc.

Applications

RigPower, LLC's MCC-1 Series Single Pole High Amperage Connectors are designed specifically with the requirements of the drilling industry in mind. These products are designed to deliver up to 1,000 Volts, AC or DC, and up to 1,135 Amps of continuous power in the most extreme conditions. Typical applications are: connection of power from generator sets to Switchgear or SCR (silicon controlled rectifiers) controls, or from the control house to traction motors, mud pumps, draw-works, rotary tables, cement pumps and top drives.

Ampacity Ratings in 40° Ambient		
Cable Size	90° C	125° C
4/0 MCM	364 AMPS	451 AMPS
313 MCM	513 AMPS	636 AMPS
373 MCM	548 AMPS	669 AMPS
444 MCM	642 AMPS	796 AMPS
535 MCM	724 AMPS	898 AMPS
646 MCM	814 AMPS	1009 AMPS
777 MCM	916 AMPS	1135 AMPS

Type P Cables

The MCC Series connectors are designed to work in conjunction with the latest generation of Type P drilling cables, per IEEE 45. Cable accommodations are from 4/0 MCM to 777 MCM. Metric cable sized contacts are available on request.

Installation

The simple design of the MCC-1 RS Series allows the connectors to be mated and unmated without the use of tools.

Sealing

MCC-1 Series plugs and connectors have internal seals which prevent water intrusion even if the caps are left off. Competitor's plugs and receptacles allow easy ingress of moisture, causing shorting of the connector to the case. This destroys the connector and presents a dangerous safety hazard.

Design & Performance Highlights

The advanced design techniques utilized by RigPower, LLC have allowed us to design in two O-Rings (Contact to Insulator and Insulator to Cable Adapter) at the optimum locations to create a water tight seal.

- Rated for 1135 Amps continuous at 1000 volts, AC/DC
- Rugged machined aluminum shell with a hard anodized coating is resistant to salt corrosion, drilling mud, humidity, moisture, oil and dust
- Heavy-Duty ACME Threaded Coupling permits positive and quick engagement even under harsh conditions
- Totally shrouded contact design and a dead front tip on both the male and female contact improves operator safety by eliminating exposed live surfaces

- Low Mating & Unmating Force permits ease of insertion and withdrawal. Available with the RigPower, LLC's advanced "Multilam" design
- Copper Alloy, Sn Plated Contacts and Buss Bars provide maximum conductivity
- Ingress Protection IP68 in mated condition or with protective cover in place
- Color Coding Option for positive phase identification

Special Product Note: The MCC-1 RS series advanced design allows for the removal of the KEY on all plugs. This eliminates the required twisting of heavy cable to align the key before mating the plug to the receptacle. With the MCC-1 RS series just push the plug into any existing competitive receptacle, screw the coupling nut down, and you're ready to go. The MCC-1 RS product is 100% intermateable with existing brands. We improved the products, made them easier to work with, and increased the safety factor! The MCC-1 RS system can intermate with Amphenol Star-Line® Radsok® plugs and receptacles.

INDUSTRY EXCLUSIVE - The patented (U.S. Patent No. 7,442,096) Female Contact and Female Receptacle buss bar have a dead front Delrin® Ring which provides increased safety by helping to prevent accidental contact. BOTH the male and female components have this added feature. Connectors are rated for 1,135 amps at 1,000 Volts, AC or DC, with the ability to withstand intermittent surges up to 1,300 amps.

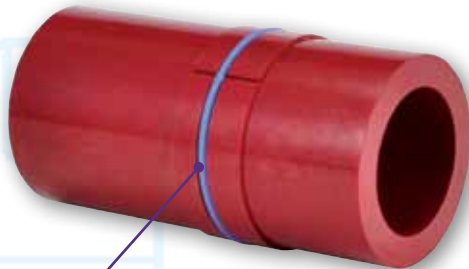
INDUSTRY EXCLUSIVE - All RigPower, LLC Contacts have a Double Crimp Style base that is longer than other manufacturer's, which provides a more complete and secure connection between the cable and contact.

- Termination method is double crimp style for cable mounted plug and receptacles
- Crimping locators are designed into the base for ease of installation
- Made from Sn plated high conductivity copper
- Uses the same crimping die sets as the RigPower, LLC "RMP®II", "Secure Mount®", "Safe Stab®", "VFD-1®", "HP20" and "MC20" series connectors

*Star-Line® and Radsok® are Registered Trademarks of Amphenol Corporation

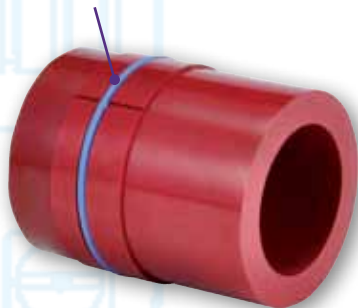


Male Contact Insulator



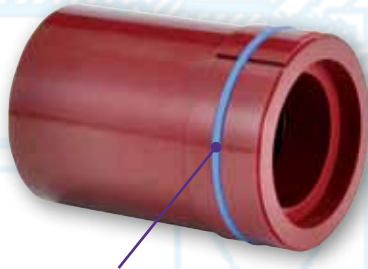
INDUSTRY EXCLUSIVE

Each insulator has an O-Ring Seal designed into the body which offers improved mounting between the insulator and cable adapter shell. Additionally, the O-Ring provides a water tight seal so that the component won't have the propensity to short or burn out, even when the cap is not installed.



Male Buss Bar Insulator

Female Contact Insulator



INDUSTRY EXCLUSIVE

Each contact and receptacle insulator has an O-Ring Seal designed into the body which offers improved mounting between the insulator and cable adapter shell and receptacle housing. Additionally, the O-Ring provides a water proof seal so that the component won't have the propensity to short or burn out, even when the cap is not installed.



Female Buss Bar Insulator

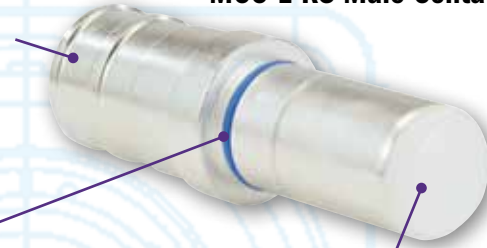
Advanced Crimping System

The MCC-1 Series connectors are designed to use the standard hex crimp seen on all RigPower, LLC products. This standard crimp design provides a more robust and durable crimp and standardizes on the tools needed. One set of four hex die sizes will accommodate all RigPower contacts from 4/0 to 777 MCM cables.

INDUSTRY EXCLUSIVE

Each contact and receptacle buss bar has an O-Ring Seal designed into the body which offers improved mounting between the insulator and contact or buss bar. Additionally, the O-Ring provides a water tight seal so that the connector won't have the propensity to short or burn out, even when the cap is not installed.

MCC-1 RS Male Contact



The Male Contacts and Buss Bars are Sn plated high conductivity copper. BOTH have a dead front end to protect operators from shock hazard. Connectors are rated for 1,135 amps at 1,000 volts, AC or DC, with the ability to withstand intermittent surges up to 1,300 amps.

MCC-1 RS Male Buss Bar



Advanced Crimping System

The MCC-1 Series connectors are designed to use the recommended hex crimp seen on all RigPower, LLC products. This standard crimp design provides a more robust and durable crimp and standardizes the tools needed. One set of four hex die sizes will accommodate all RigPower contacts from 4/0 to 777 MCM.

INDUSTRY EXCLUSIVE

Each contact and receptacle insulator has an O-Ring Seal designed into the body which offers improved mounting between the insulator and cable adapter shell and receptacle housing. Additionally, the O-Ring provides a water proof seal so that the component won't have the propensity to short or burn out, even when the cap is not installed.

MCC-1 RS Female Contact Receptacle



NOTE: The Female RS Contacts and Buss Bars are designed to be compatible with the standard Star-Line® Radsok® style components. They are manufactured from high quality copper and are Sn plated for maximum conductivity and corrosion resistance. Rated for 1,135 amps at 1,000 volts AC/DC.

MCC-1 RS Female Buss Bar



INDUSTRY EXCLUSIVE

Female Receptacle – The RS Female Contact Receptacle comes with the patented (U.S. Patent No. 7,442,096) Dead Front Delrin® Ring which provides increased safety by helping to prevent accidental contact. BOTH the RS male and female parts have this feature to protect operators from shock hazard. Connectors are rated for 1,135 amps at 1000 volts, AC or DC, with the ability to withstand intermittent surges up to 1,300 Amps.

The MCC-1 RS Series connectors come standard with the Multilam contact system. The Multilam Louver Strip allows electrical contact to be made via a large number of defined, current carrying contact points.

- High resistance to heat
- High electrical and thermal conductivity
- Sufficiently high contact forces
- High number of contact cycles
- Excellent resistance to corrosion
- Resistance to vibration
- Long product life

NOTE: The MCC-1 RS system can intermate with Amphenol Star-Line® Radsok® plugs and receptacles.

*Star-Line® and Radsok® are Registered Trademarks of Amphenol Corporation

MCC-1 RS Male Buss Bar Receptacle

The MCC-1 Series receptacles have two keyways to accept other manufacturer's standard two key plugs.

Male Buss Bar Receptacle — Sn plated high conductivity copper. BOTH the Male and Female RS Contacts and Buss Bars have a dead front end to protect operators from shock hazard. Connectors are rated for 1,135 amps at 1000 volts AC or DC with the ability to withstand intermittent surges up to 1,300 Amps.

Receptacle Gasket — Neoprene Mounting Gasket provided.

Receptacle Cap

- Heavy duty stainless steel chain and clips to prevent loss of cap
- Powder Coated for easier phase identification at hook-up



The MCC-1 Series receptacles have two keyways to accept other manufacturer's standard two key plugs.

MCC-1 RS Female Buss Bar Receptacle

- The MCC-1 Series connectors are available with the Multilam contact system. The Multilam Louver Strip allows electrical contact to be made via a large number of defined, current carrying contact points.
- High resistance to heat
 - High electrical and thermal conductivity
 - Sufficiently high contact forces
 - High number of contact cycles
 - Excellent resistance to corrosion
 - Resistance to vibration
 - Long product life

Receptacle Gasket — Neoprene Mounting Gasket provided.

MCC-1 Series connectors are available in eight standard colors in durable powder coating.

* Purple and Gray available upon special request.

If additional colors are desired, the option is provided from RigPower to powder coat two color bands on each connector. This allows over forty unique color combinations to ensure proper connections to multiple pieces of equipment.



Receptacle Cap

- Heavy duty stainless steel chain and clips to prevent loss of cap
- Powder Coated for easier phase identification at hook-up

INDUSTRY EXCLUSIVE

Female Receptacle — The RS Female Buss Bar Receptacle comes with the patented (U.S. Patent No. 7,442,096) Dead Front Delrin® Ring which provides increased safety by helping to prevent accidental contact. BOTH the RS male and female parts have this feature to protect operators from shock hazard. Connectors are rated for 1,135 amps at 1000 volts, AC or DC, with the ability to withstand intermittent surges up to 1,300 Amps.

The MCC-1 Series receptacles have two keyways to accept other manufacturer's standard two key plugs.

MCC-1 RS Female Contact Receptacle

The MCC-1 Series connectors are available with the Multilam contact system. The Multilam Louver Strip allows electrical contact to be made via a large number of defined, current carrying contact points.

- High resistance to heat
- High electrical and thermal conductivity
- Sufficiently high contact forces
- High number of contact cycles
- Excellent resistance to corrosion
- Resistance to vibration
- Long product life

Receptacle Cap

- Heavy duty stainless steel chain and clips to prevent loss of cap
- Powder Coated for easier phase identification at hook-up

Receptacle Gasket — Neoprene Mounting Gasket provided.

INDUSTRY EXCLUSIVE

Female Receptacle — The RS Female Contact Receptacle comes with the patented (U.S. Patent No. 7,442,096) Dead Front Delrin® Ring which provides increased safety by helping to prevent accidental contact. BOTH the RS male and female parts have this feature to protect operators from shock hazard. Connectors are rated for 1,135 amps at 1000 volts, AC or DC, with the ability to withstand intermittent surges up to 1,300 Amps.

NOTE: The MCC-1 RS system can intermate with Amphenol Star-Line® Radsok® plugs and receptacles.



INDUSTRY FEATURES AND BENEFITS

INDUSTRY EXCLUSIVE

Cable Adapter – Robust grip with knurling for easy assembly and handling. Fully powder coated.

Cable Plugs can accommodate either a Mechanical Cable Clamp or Kellems® Grip (shown).

Male Plug Contact – Sn plated high conductivity copper. BOTH the Male and Female have a Dead Front end to protect operators from shock hazard. Connectors are rated at 1000 volts, AC or DC, with the ability to withstand intermittent surges up to 1,300 Amps.

MCC-1 Series Plug connectors have no keyway. This allows MCC-1 plugs to be inserted into any receptacle without trying to rotate stiff DLO sized cables.

MCC-1 RS Male Plug

INDUSTRY EXCLUSIVE

Coupling Nut – The Coupling Nut also has a robust hex design at the rear for easier cable-to-receptacle connections or cable-to-cable connection.

INDUSTRY EXCLUSIVE

Plug Cap – Fully powder coated, helps protect roughnecks by identifying proper phase color easily, up close or from a distance. Heavy duty stainless steel chain and clips to prevent loss of cap.

MCC-1 RS In-line Female Receptacle

MCC-1 RS Series In-line Receptacle has two keyways to accept other manufacturer's keyed plugs.

The MCC-1 RS Series connectors are available with the Multilam contact system. The Multilam Louver Strip allows electrical contact to be made via a large number of defined, current carrying contact points.

- High resistance to heat
- High electrical and thermal conductivity
- Sufficiently high contact forces
- High number of contact cycles
- Excellent resistance to corrosion
- Resistance to vibration
- Long product life

INDUSTRY EXCLUSIVE

The Female Contact has a patented (U.S. Patent No. 7,442,096) Dead Front Delrin® Ring which provides increased safety by helping to prevent accidental contact. BOTH the RS Male and Female Contacts have a dead front end to protect operators from shock hazard. Connectors are rated at 1000 volts, AC or DC, with the ability to withstand intermittent surges up to 1,300 amps.

NOTE: The MCC-1 RS system can intermate with Amphenol Star-Line® and Radsok® plugs and receptacles.

Cable Plugs can accommodate either a Mechanical Cable Clamp or Kellems® Grip.

INDUSTRY EXCLUSIVE

Cable Adapter – Robust grip with knurling for easy assembly and handling. Fully powder coated.

INDUSTRY EXCLUSIVE

Plug Cap – Fully powder coated, helps protect roughnecks by identifying proper phase color easily, up close or from a distance. Heavy duty stainless steel chain and clips to prevent loss of cap.

MCC-1 RS In-line Connection

MCC-1 RS Plug

*Star-Line® and Radsok® are Registered Trademarks of Amphenol Corporation

*Kellems®, is a Registered Trademark of Hubbell Inc.

MCC-1 RS In-line Receptacle

Ordering Table for MCC-1 SL Single Pole Power Connectors (Rated for 1000 Volts / 1135 Amps)		
MCC-1 SL Panel Mount Receptacles Ordering Format: MCC1-(1)-(2)-(3)		
(1) Receptacle Gender & Style Connection	(2) Crimp Contact Sizes	(3) Color
MALE Receptacle Choices	4/0 = 313 MCM w/4/0 Insert 2 = 444 MCM w/373 Insert	BK = Black BL = Blue
17PR = SL Male Buss Bar Panel Mount Receptacle	3 = 313 MCM	BR = Brown
17PN = SL Male Contact Panel Mount Receptacle	4 = 444 MCM	G = Green
Z10PR = SL Male Buss Bar Panel Mount Receptacle w/Coupling Nut	5 = 535 MCM	GY = Gray
Z10PN = SL Male Contact Panel Mount Receptacle w/Coupling Nut	6 = 646 MCM	OR = Orange
FEMALE Receptacle Choices	7 = 777 MCM	P = Purple
17SR = SL Female Buss Bar Panel Mount Receptacle	Note: Skip this section if you ordered the following receptacles: 17PR, Z10PR, 17SR, or Z10SR	R = Red
17SN = SL Female Contact Panel Mount Receptacle		W = White
Z10SR = SL Female Buss Bar Panel Mount Receptacle w/Coupling Nut		Y = Yellow
Z10SN = SL Female Contact Panel Mount Receptacle w/Coupling Nut		
The MCC-1 RS Receptacles and Contacts are 100% intermateable with all current *Radsok® style products currently in use		

MCC-1 SL Plugs, In-line Receptacles & Fixed Cable Receptacles Ordering Format: MCC1-(1+2)-(3)-(4)-(5)				
(1) Style of Plug Casing	(2) Male & Female Contact Size	(3) Grommet	(4) Mechanical Clamp	(5) Color
10 = SL Plug	P4/0 = SL 313 Male Contact w/4/0 Insert	14 = 0.750 - 0.875	M = Mechanical Clamp	BK = Black
	P2 = SL 444 Male Contact w/373 Insert	16 = 0.875 - 1.000		BL = Blue
OR	P3 = SL 313 Male Contact	18 = 1.000 - 1.125	OR	BR = Brown
	P4 = SL 444 Male Contact	20 = 1.125 - 1.250		G = Green
15 = SL In-Line Receptacle	P5 = SL 535 Male Contact	22 = 1.250 - 1.375	Kellems Grip	GY = Gray
	P6 = SL 646 Male Contact	24 = 1.375 - 1.500		OR = Orange
OR	P7 = SL 777 Male Contact	26 = 1.500 - 1.625	K16 = 16 (0.875 - 1.000)	P = Purple
	S4/0 = SL 313 Female Contact w/4/0 Insert	38 = 1.625 - 1.750	K20 = 20 (1.000 - 1.250)	R = Red
17 = SL Fixed Cable Receptacle	S2 = SL 444 Female Contact w/373 Insert	30 = 1.750 - 1.875	K24 = 24 (1.250 - 1.500)	W = White
	S3 = SL 313 Female Contact	32 = 1.875 - 2.000	K28 = 28 (1.500 - 1.750)	Y = Yellow
The staff at RigPower, LLC would like to thank you for allowing us to support your electrical connectors needs!	S4 = SL 444 Female Contact	34 = 2.000 - 2.125	K32 = 32 (1.750 - 2.000)	
	S5 = SL 535 Female Contact	36 = 2.125 - 2.250	K36 = 36 (2.000 - 2.250)	
	S6 = SL 646 Female Contact	38 = 2.250 - 2.375	K39 = 36 (2.250 - 2.437)	
	S7 = SL 777 Female Contact	39 = 2.375 - 2.437		
	2-4/0-F = SL 4/0 Female Contact (For Two Cables)	Note: Skip sections 3 & 4 if you ordered the 2-4/0-F		

Ordering Table for MCC-1 RS Single Pole Power Connectors (Rated for 1000 Volts/1135 AMPS)		
MCC-1 RS Panel Mount Receptacles Ordering Format: MCC1-(1)-(2)-(3)		
(1) Receptacle Gender and Style Connection	(2) Crimp Contact Sizes	(3) Color
MALE Receptacle Choices	4/0 = 313 MCM w/4/0 Insert 2 = 444 MCM w/373 Insert	BK = Black BL = Blue
R17PR = RS Male Buss Bar Panel Mount Receptacle	3 = 313 MCM	BR = Brown
R17PN = RS Male Contact Panel Mount Receptacle	4 = 444 MCM	G = Green
ZR10PR = RS Male Buss Bar Panel Mount Receptacle w/Coupling Nut	5 = 535 MCM	GY = Gray
ZR10PN = RS Male Contact Panel Mount Receptacle w/Coupling Nut	6 = 646 MCM	OR = Orange
FEMALE Receptacle Choices	7 = 777 MCM	P = Purple
R17SR = RS Female Buss Bar Panel Mount Receptacle	Note: Skip this section if you ordered R17PR, ZR10SR, R17SR or ZR17SR Receptacles	R = Red
R17SN = RS Female Contact Panel Mount Receptacle		W = White
ZR10SR = RS Female Buss Bar Panel Mount Receptacle w/Coupling Nut		Y = Yellow
ZR10SN = RS Female Contact Panel Mount Receptacle w/Coupling Nut		
The MCC-1 RS Receptacles and Contacts are 100% intermateable with all current *Radsok® style products currently in use		



Mechanical Clamp

Has a dual holding pattern. One size for larger cables, reverse it and it accommodates smaller cables more effectively.



Cable Grommet

Has a tapered fit to the cable adapter and is available in fourteen sizes to ensure a proper water tight seal to the cable.



Retaining Rings

Heavy duty design to hold contacts and receptacles securely in place.

*Radsok®, Star-line are a Registered Trademark of Amphenol Corporation

*Kellems®, is a Registered Trademark of Hubbell Inc.

MCC-1 SERIES PARTS LIST & ACCESSORIES

MCC-1 RS Plugs, In-line Receptacles & Fixed Cable Receptacles

Ordering Format: MCC1-(1+2)-(3)-(4)-(5)

(1) Style of Plug Casing	(2) Male & Female Contact Size	(3) Grommet	(4) Cable Clamp Style	(5) Color
R10 = RS Plug	P4/0 = RS 313 Male Contact w/4/0 Insert	14 = 0.750 - 0.875	M = Mechanical Clamp	BK = Black
	P2 = RS 444 Male Contact w/3/73 Insert	16 = 0.870 - 1.000		BL = Blue
OR	P3 = RS 313 Male Contact	18 = 1.000 - 1.125	OR	BR = Brown
	P4 = RS 444 Male Contact	20 = 1.125 - 1.250		G = Green
R15= RS In-Line Receptacle	P5 = RS 535 Male Contact	22 = 1.250 - 1.375	Kellems Grip	GY = Gray
	P6 = RS 646 Male Contact	24 = 1.375 - 1.500		OR = Orange
OR	P7 = RS 777 Male Contact	26 = 1.500 - 1.625	K16 = 16 (0.875 - 1.000)	P = Purple
	S4/0 = RS 313 Female Contact w/4/0 Insert	28 = 1.625 - 1.750	K20 = 20 (1.000 - 1.250)	R = Red
R17 = RS Fixed Cable Receptacle	S2 = RS 444 Female Contact w/3/73 Insert	30 = 1.750 - 1.875	K24 = 24 (1.250 - 1.500)	W = White
	S3 = RS 313 Female Contact	32 = 1.875 - 2.000	K28 = 28 (1.500 - 1.750)	Y = Yellow
NOTE: Combine group 1 with group 2.	S4 = RS 444 Female Contact	34 = 2.000 - 2.125	K32 = 32 (1.750 - 2.000)	
	S5 = RS 535 Female Contact	36 = 2.125 - 2.250	K36 = 36 (2.000 - 2.250)	
Example: 10P3	S6 = RS 646 Female Contact	38 = 2.250 - 2.373	K39 = 39 (2.250 - 2.437)	
	S7 = RS 777 Female Contact	39 = 2.375 - 2.437		

MCC-1 Single Pole Power Spare Parts

RigPower's MCC-1 Parts are 100% Intermateable with ALL Existing Parts Currently in Use

MCC-1 Receptacle & Plug Parts

MCC-1 Contacts & Buss Bar Parts

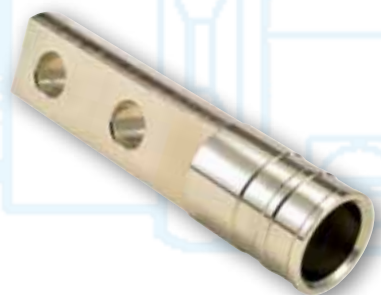
Part Number	Part Description	Part Number	MALE Part Description
G14	Grommet 14 (0.750 - 0.875)	MCC1-SLM4/0	MCC1 - SL 313 Male Contact w/4/0 Insert
G16	Grommet 16 (0.875 - 1.000)	MCC1-SLM2	MCC1 - SL 444 Male Contact w/3/73 Insert
G18	Grommet 18 (1.000 - 1.125)	MCC1-SLM3	MCC1 - SL 313 Male Contact
G20	Grommet 20 (1.125 - 1.250)	MCC1-SLM4	MCC1 - SL 444 Male Contact
G22	Grommet 22 (1.250 - 1.375)	MCC1-SLM5	MCC1 - SL 535 Male Contact
G24	Grommet 24 (1.375 - 1.500)	MCC1-SLM6	MCC1 - SL 646 Male Contact
G26	Grommet 26 (1.500 - 1.625)	MCC1-SLM7	MCC1 - SL 777 Male Contact
G28	Grommet 28 (1.625 - 1.750)	MCC1-RSM4/0	MCC1 - RS 313 Male Contact w/4/0 Insert
G30	Grommet 30 (1.750 - 1.875)	MCC1-RSM2	MCC1 - RS 444 Male Contact w/3/73 Insert
G32	Grommet 30 (1.875 - 2.000)	MCC1-RSM3	MCC1 - RS 313 Male Contact
G34	Grommet 34 (2.000 - 2.125)	MCC1-RSM4	MCC1 - RS 444 Male Contact
G36	Grommet 36 (2.125 - 2.250)	MCC1-RSM5	MCC1 - RS 535 Male Contact
G38	Grommet 38 (2.250 - 2.273)	MCC1-RSM6	MCC1 - RS 646 Male Contact
G39	Grommet 39 (2.273 - 2.437)	MCC1-RSM7	MCC1 - RS 777 Male Contact
GW16	Grommet Washer 16 (0.870 - 1.125)	MCC1-SLMBB	MCC1 - SL Male Buss Bar
GW20	Grommet Washer 20 (1.125 - 1.375)	MCC1-RSMBB	MCC1 - RS Male Buss Bar
GW24	Grommet Washer 24 (1.375 - 1.625)	MCC1-MCI	MCC1 - Male Contact Insulator (Receptacle or Plug)
GW28	Grommet Washer 28 (1.625 - 1.875)	MCC1-MBI	MCC1 - Male Buss Bar Insulator (Receptacle Only)
GW32	Grommet Washer 32 (1.875 - 2.125)	MRC	Male Retaining Ring
GW36	Grommet Washer 32 (2.125 - 2.273)	MRCW	Male Retaining Ring Washer
GW39	Grommet Washer 39 (2.273 - 2.437)		
Part Number		Part Number	FEMALE Part Description
K16	Kellems Grip 16 (0.875 - 1.000)	MCC1-SLF4/0	MCC1 - SL 313 Female Contact w/4/0 Insert
K20	Kellems Grip 20 (1.000 - 1.250 Cable)	MCC1-SLF2	MCC1 - SL 444 Female Contact w/3/73 Insert
K24	Kellems Grip 24 (1.250 - 1.500 Cable)	MCC1-SLF3	MCC1 - SL 313 Female Contact
K28	Kellems Grip 28 (1.500 - 1.750 Cable)	MCC1-SLF4	MCC1 - SL 444 Female Contact
K32	Kellems Grip 32 (1.750 - 2.000 Cable)	MCC1-SLF5	MCC1 - SL 535 Female Contact
K36	Kellems Grip 36 (2.000 - 2.250 Cable)	MCC1-SLF6	MCC1 - SL 646 Female Contact
K39	Kellems Grip 39 (2.250 - 2.437 Cable)	MCC1-SLF7	MCC1 - SL 777 Female Contact
KN24	Kellems Grip Nut #24	MCC1-RSF4/0	MCC1 - RS 313 Female Contact w/4/0 Insert
MC24	Mechanical Clamp #24	MCC1-RSF2	MCC1 - RS 444 Female Contact w/3/73 Insert
G	Receptacle Gasket	MCC1-MF3	MCC1 - RS 313 Female Contact
MCC1-IRC-XX	MCC1 - In-Line Receptacle Cap w/Chain - Select Color	MCC1-MF4	MCC1 - RS 444 Female Contact
MCC1-PC	MCC1 - Plug Cap w/Chain - Select Color	MCC1-MF5	MCC1 - RS 535 Female Contact
MCC1-CA-XX	MCC1 - Cable Adapter - Select Color	MCC1-MF6	MCC1 - RS 646 Female Contact
MCC1-CN	MCC1 - Coupling Nut for Plug	MCC1-MF7	MCC1 - RS 777 Female Contact
MCC1-Z-PMCN-XX	MCC1 - Panel Mount Coupling Nut - Select Color	MCC1-SLFBB	MCC1 - SL Female Buss Bar
MCC1-RGN	MCC1 - Receptacle Gland Nut	MCC1-RSFBB	MCC1 - RS Female Buss Bar
MCC1-RH-XX	MCC1 - Receptacle Housing - Select Color	MCC1-FCI	MCC1 - Female Contact Insulator (Receptacle or Plug)
MCC1-Z-PMA-XX	MCC1 - Panel Mount Adapter - Select Color	MCC1-FBI	MCC1 - Female Buss Bar Insulator (Receptacle Only)
MCC1-RC-XX	MCC1 - Receptacle Cap w/Chain - Select Color	FRC	Female Retaining Ring
		FRCW	Female Retaining Ring Washer
Additional MCC-1 Support Items		XX: Black = BK, Blue = BL, Brown = BR, Green = G, Orange = OR, Red = R, White = W, Yellow = Y. By request: Gray = GY, Purple = P	
30° - 45° REVERSIBLE LOCKING BUSS BAR LUGS		DOUBLE HOLE LUGS	
SL-535-AL	535 MCM 30°/45° Angled Lug for Buss Bar Connections	QS-535-L	535 MCM Double Hole Lug
SL-646-AL	646 MCM 30°/45° Angled Lug for Buss Bar Connections	QS-646-L	646 MCM Double Hole Lug
SL-777-AL	777 MCM 30°/45° Angled Lug for Buss Bar Connections	QS-777-L	777 MCM Double Hole Lug



30° - 45° Reversible Locking Buss Bar Lug

The 30° or 45° Reversible Buss Bar Lug was created by RigPower to help eliminate the long bend radius that is inherent when using standard single or double hole crimp lugs. Compared to current single hole lugs, the Reversible Buss Bar Lug gives you mounting options no one else can. The lug's shoulder rests securely on the buss bar, preventing any rotation that may be caused from the weight of the cable tension or from equipment vibration. Reducing the bend radius provides for additional work space behind the SCR house panel and other panel mounted areas.

- Termination method is double crimp style
- Crimping locators are designed into the base for ease of installation
- Uses the same crimping die sets as the RigPower RMP®II, Secure Mount®, Safe Stab®, VFD-1®, HP20 and MC20 series connectors
- Made from Duplex Sn plated high conductivity copper



Double Hole Lug

The industry's most robust Lug. Machined from solid copper bar stock, not stamped.

- Termination method is double crimp style
- Crimping locators are designed into the base for ease of installation
- Uses the same crimping die sets as the RigPower RMP®II, Secure Mount®, Safe Stab®, VFD-1®, HP20 and MC20 series connectors

SPECIAL NOTE: THE MCC-1 SERIES IS ALSO AVAILABLE IN A #20 SIZE SHELL, THE MC-20 SERIES

The "MCC-1" Series:

- The Industry Standard For High-Amperage Power Connectors
- MCC-1 Technology Provides Superior Product Design Features
- MCC-1 O-Ring Seals Are Another Example Of Innovative Ideas Brought To Life Through RigPower's Collaborative Meetings With Customers and Oilfield Experts
- Have An Idea? Visit With Us To Find The Solution!

Single Pole High-Amperage Connectors for Use on Land Based and Off-Shore Drilling Rigs and Other High-Amperage Power Generation Applications
For Use with Single Conductor Cables 4/0 MCM to 777 MCM

If You Want The Very Best Single Pole Electrical Connectors
Demand Genuine RIGPOWER, LLC Electrical Parts

Look for these other fine products from RigPower, LLC:

The RMP® II Series, Secure Mount® Series, Safe Stab®,

Quick Stab®, Quad Stab Series, VFD-1® Series, HP20 Series, MC20 Series and

The Phase-Lock® Sequential Locking System



10345 South Perdue Avenue
Baton Rouge, Louisiana 70814 USA
phone: (225) 272-8800
fax: (225) 272-8830
www.rigpower.com