

AMPHENOL (), SOURIAU (), LEMO (), DEUTSCH (),
SABRITEC ()

SABRITEC –

Ethernet, IEEE 1394 –

SABRITEC

SABRITEC

38999, MIL-DTL-83723, MIL-C-26482,
DTL-83527, ARINC 404, ARINC 600,
DTL-24308, MIL-DTL-83513,

D-sub
Combo D-sub.

MIL-DTL-
MIL-
MIL-



MIL-DTL-38999, I – IV



MIL-DTL-83723, III/MIL-C-26500



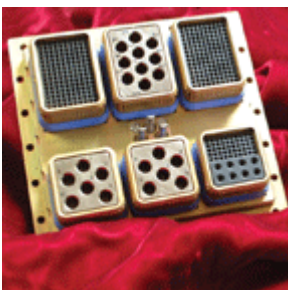
MIL-C-26482, II
MIL-DTL-83723, III



ARINC 404



ARINC 600



MIL-DTL-83527

D-Sub



MIL-DTI-24308



MIL-DTL-83513, Micro-D



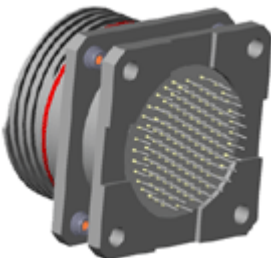
Combo D-Sub



MIL-DTL-38999, MIL-DTL-26482, MIL-C-83723, MIL-DTL-24308, MIL-C-83513, ARINC 404, ARINC 600



MIL-C-38999, III



Pi

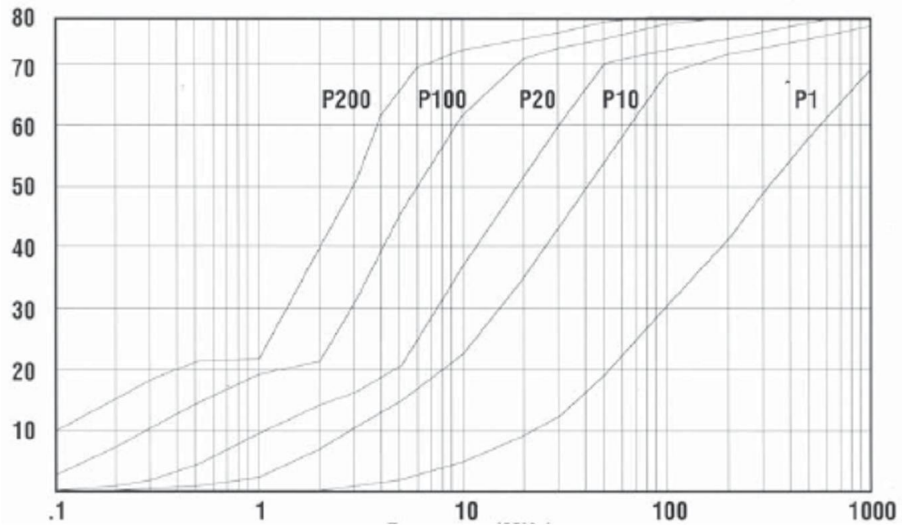
-
-
-
-
-

40

Pi – 60,



	P200	P100	P76	P38	P20	P10	P8	P4	P2	P1	
					-55 + 125 C						
	100 VDC				200 VDC-120Vrms 400 Hz						
					15		# 16				
					7.5		# 20				
					5		# 22				
					5000		100 VDC				
					3.0						
50 (/)	250 VDC				500 VDC						



	P200	P100	P76	P38	P20	P10	P8	P4	P2	P1	
1 1 . .	160 240	80 120	60 91	30 46	16 24	8 12	6.4 9.2	3.2 4.8	1.6 2.4	0.8 1.2	
t + 25°	0.1	8	4.1	3	1	0.3	0.1	-	-	-	
	1.0	22.2	19.6	18.2	13.3	8.2	3.9	2.9	0.9	0.2	
	2	32.8	21.7	19.7	16.8	12.7	8	6.6	2.9	1	
	10	73.5	61	57	44.4	31.5	20.6	18.3	12.8	8.1	
	100	85+	85+	85+	85+	78.0	65.8	61.9	49.6	37.3	25.6
	500 – 1k	85+	85+	85+	85+	85+	85+	80	75	64	52

L

-
-
-
-
-
-

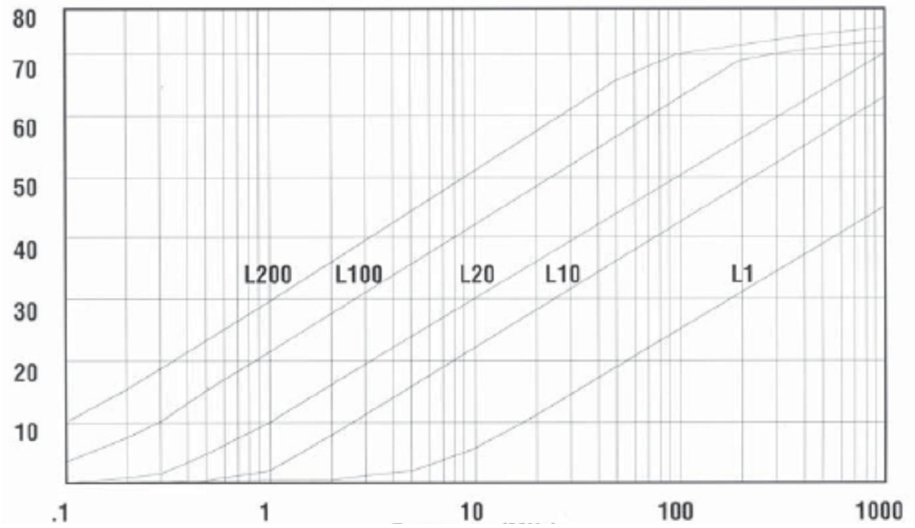
20

C

Pi

Pi
LC C

	L200	L100	L76	L38	L20	L10	L8	L4	L2	L1	
						-55 +125 C					
	100 VDC					200 VDC/120Vrms 400 Hz					
						15	# 16				
						7.5	# 20				
						5	# 22				
						5000	100 VDC				
						3.0					
(/)	50	250 VDC					500 VDC				



		L200	L100	L76	L38	L20	L10	L8	L4	L2	L1
1	1	160	80	60	30	16	8	6.4	3.2	1.6	0.8
		240	120	91	46	24	12	9.2	4.8	2.4	1.2
t + 25°	0.1	8.6	4.1	3	1	0.3	0.1	-	-	-	-
	1.0	28	22	20.1	14.2	8.6	4	3	0.9	0.2	-
	2	34.3	28.3	26.3	20.3	14.4	8.8	7.2	3.1	1	-
	10	49	43	41.1	35	29	23	21.1	15.1	9.5	4.8
	100	69.9	63.9	62	55.9	49.9	43.9	42	35.9	29.9	23.9
	500 - 1k	83.7	77.7	75.8	69.7	63.7	57.7	55.8	49.7	43.7	37.7

C

-
-
-
-
-

20

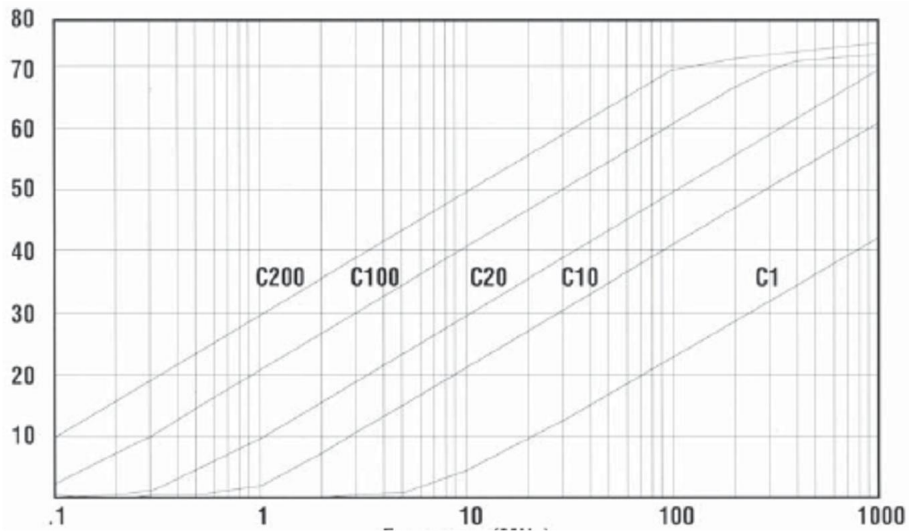
,

,

,

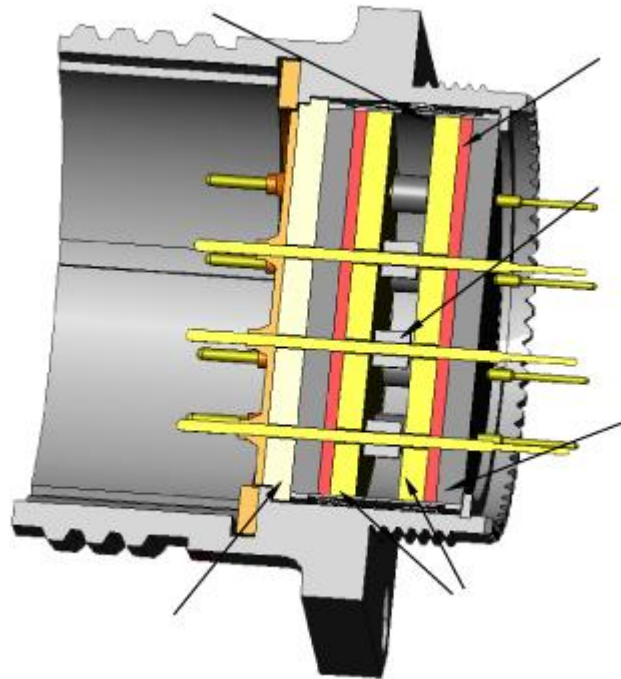


	C200	C100	C76	C38	C20	C10	C8	C4	C2	C1	
							-55 + 125 C				
	100 VDC						200 VDC/120Vrms 400 Hz				
							15	# 16			
							7.5	# 20			
							5	# 22			
							5000	100 VDC			
							3.0				
(/)	50						250 VDC				
							500 VDC				



		C200	C100	C76	C38	C20	C10	C8	C4	C2	C1
1	1	160 240	80 120	60 91	30 46	16 24	8 12	6.4 9.2	3.2 4.8	1.6 2.4	0.8 1.2
t + 25°	0.1	8.6	4.1	3	1	0.3	0.1	-	-	-	-
	1.0	28	22	20.1	14.2	8.6	4.1	3	1	0.3	0.1
	2	34	28	26.1	20.1	14.2	8.6	7	3	1	0.3
	10	48	42	40	34	28	22	20.1	14.2	8.6	4.1
	100	68	62	60	54	48	42	40	34	28	22
	500 - 1000	82	76	74	68	62	56	54	48	42	36

/
SABRITEC
/



SABRITEC

(
), : Ethernet (10 BASE-T, 100 BASE-T, 1000 BASE-T), Firewire (IEEE 1394A 1394B), USB, DVI. SABRITEC



MIL-DTL-38999, III
2 /
- 3



MIL-DTL-38999, III
11 - 25



ARINC 404
2 /
- 3
5 9



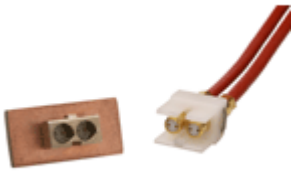
ARINC 600
2 /
- 3



MIL-DTL-83527
2 /
- 3



100 150 ,
 (, - 2 21
 2 /



100



D-Sub



NDL, SMA Micro D



2 /

MIL-DTL-38999,

11-4

SABRITEC

MIL-
5,

DTL-38999
12 # 16.

. SABRITEC

FC, ST, LC, Duplex/Simplex, MTP, MT-RJ, SC.



ARINC 801

, 1.25 ,

LC.



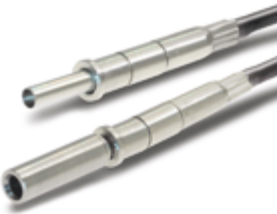
5
62.5/125

ARINC MIL-DTL-38999

-0.8 dB ()

12

MIL-DTL-38999



M39029/56-353
M39029/58-365

50/125 62.5/125

-1.0 dB ()

MIL-DTL-38999: 13-

2, 15-4, 17-6, 21-11 25-19



16
62.5/125

-0.7 dB ()



62.5/125

-0.20 dB ()



MIL-DTL-38999,
21-4 # 5
62.5/125
- 0.8 dB ()

SC Connectors



Push-Pull
- 0.4 dB ()
PC APC



RSC
62.5/125
4
- 0.4 dB ()



FC
PC APC
NTT-FC
- <0.5 dB max, < 0.34 dB



ST
- <0.5 dB Max, < 0.3 dB



MTP
Push-Pull
PC APC
50/125 62.5/125
9/125



MT-RJ
 50/125 62.5/125
 6/125, 9/125
 PC APC
 - < 0.35 dB
 - < 0.25 dB
 () - < 35 dB



LC Simplex/Duplex
 6/125, 9/125
 50/125, 62.5/125
 PC APC
 -0.20 dB ()
 () - 45 dB min.

SABRITEC

SABRITEC

ARINC 600 MIL-DTL-38999.

D-sub

MIL-STD-1553B, ARINC 429, 100 Base-T

Ethernet



() NDL-T () NDL-Q



D-Sub
 100



MIL-DTL-38999, MIL-DTL-83527,
ARINC 404, ARINC 600, MIL-DTL-24308
8, # 10 # 12

MIL-DTL-38999, # 1, # 5, # 8, # 9 # 12
ARINC, # 8
. MIL-DTL-83527.

QPL

60, 75 85
ARINC 600 MIL-DTL-38999

SABRITEC ()
SCX, MDHC, MDCX, SMP, SMPM,

MIL-DTL-38999, ARINC 404, ARINC 600.

SABRITEC



Micro-D (MDHC)

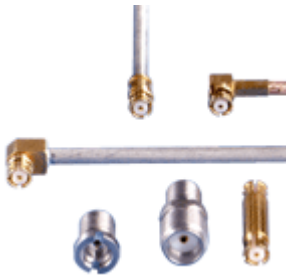
30 . 4, 6, 8, 10 12

MDCX

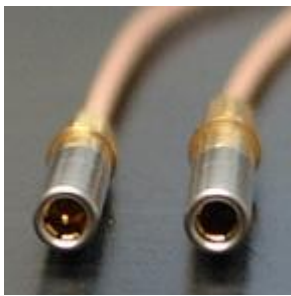
20 . 4, 6, 8, 10 12

SCX

50 . 20



SMP/SMPM
40 , – 0.10 dB max.



5, #9 # 12
MIL-DTL-38999, ARINC 404, ARINC 600
RG-178 RG-316



SABRITEC

SABRITEC –

<http://www.SABRITEC.com>

» (–) <http://www.novaspb.com>

« »

• •