

# Content

1	Heidelberg Systemservice	4	3	Folder Gluers	33
2	Die Cutters	9		<b>Mechanical Parts</b>	<b>35</b>
	<b>Mechanical Parts</b>	<b>11</b>		• Brushes	36
	• Brushes	12		• Springs	36
	• Springs	12		• Filters	38
	• Grippers and gripper accessories	13		• Drives	39
	• Chains/rollers	14		• Hooks	40
	• Belts	15		• Levers	41
	• Suckers/suction discs	16		• Chains	42
	• Tools	17		• Sprocket wheels	43
	• Cutting plates	18		• Bearings	44
	• Other parts	20		• Belts	46
				• Belt tensioners	50
				• Rollers	51
	<b>Electrical and Electronic Parts</b>	<b>21</b>		• Scrapers	52
	• Relays/contactors/switches	22		• Discs	53
	• Sensors	23		• Feed gates/bars	55
	• Other parts	24		• Rollers	56
				• Shafts	57
	<b>Options for Retrofitting</b>	<b>27</b>		• Sleeves	58
	• Chases	29		• Bushes	59
	• Frames	30		• Rings	60
				• Cylinders	62
				<b>Electrical and Electronic Parts</b>	<b>63</b>
			4	Index	67

# All parts: Any time, anywhere



World Logistics Center, Wiesloch

**Focus on productivity** • Die cutters and folder gluers from Heidelberg® are high-productivity systems that are often in operation round the clock. To secure this high productivity, we can offer you the 24-hour delivery service and highly efficient logistics of Heidelberg Systemservice™. Our logistic centers in Germany, the U.S. and Asia hold 130,000 different Original Heidelberg™ Service Parts in stock, of which over 6,000 are intended specifically for our folding carton gluing machines and die cutters. This selection of critical service and wear parts for finishing packagings is subject to constant revision and expansion by our product experts in the service and development sectors. This ensures we have almost every service part in stock and can supply over 95 percent of our service parts directly.

**Quality assured** • Only Original Heidelberg Service Parts run smoothly in our machines, since they have been developed and tested specially by us and therefore meet the Heidelberg quality standards. Our aim is to maximize your productivity. To enable us to supply service parts globally in an absolute minimum of time, we have implemented a sophisticated logistics concept and are constantly striving to make it even more effective. Consequently, should a service part ever fail or you run out of a particular consumable, our area-wide service part logistics system will ensure you can get your equipment up and running again as quickly as possible.

**Service parts for greater reliability** • Original Heidelberg Service Parts for packaging finishing are available for the Dymatrix®, Varimatrix®, and Diana® product lines from Heidelberg.

Did you know ...

... that at Heidelberg Systemservice we are available for you round the clock?



#### **Chronology of a repair – Dymatrix 106**

##### **Wednesday**

- 3.04 p.m.** Cadmus, Charlotte – North Carolina, U.S.: Machine ceases working. The customer informs Heidelberg.
- 3.44 p.m.** Heidelberg calls the customer to identify the problem: The machine was switched off when exchanging tools, with the result that the frame was in the wrong position when the machine was restarted.
- 4.05 p.m.** Service experts link up with the Dymatrix using the remote diagnostic feature.
- 4.55 p.m.** With the support of the customer, the expert ascertains that a photo sensor is preventing the frame returning to its home position; the service expert implements a temporary fix via the remote link.
- 5.20 p.m.** The frame can now be moved to the correct position and the machine is restarted.
- 5.35 p.m.** The Heidelberg expert removes the temporary solution.
- 5.50 p.m.** The customer resumes normal production.

## Grippers

The grippers on offer from Heidelberg are specially developed for applications in our die cutting systems. This means every gripper is tested for durability and register-accurate sheet transport. Heidelberg grippers

are specially processed with a high level of precision and their quality is ensured for years thanks to strict quality control procedures.



## Gripper bars

Article no.	Type of machine
<b>MN.5405220/00</b>	Dymatrix 106/113, WPM 400
<b>ZM.365801</b>	Dymatrix 105 CS, WPM 300 A
<b>ZM.625805</b>	Dymatrix 142, WPM 600

## Gripper

Article no.	Type of machine
<b>ZM.300841</b>	All machines except Dymatrix 142



## Gripper tongue


Article no.	Type of machine
<b>ZM.300836</b>	All machines except Dymatrix 142

## Bearing shell

Article no.	Type of machine
<b>ZM.300843</b>	All machines except Dymatrix 142

## Did you know ...

... that regular maintenance checks from Heidelberg Systemservice can help increase the productivity of your machinery by 23 percent? That was the finding of a survey Heidelberg conducted among customers and prospective purchasers. 90 percent of people surveyed have also noticed a positive link between the productivity of machinery and its maintenance status – production stabilizes and downtimes become less frequent.

 We recommend always having these parts replaced by a Heidelberg Systemservice engineer.

## Chains

Heidelberg chains must ensure positive-locking power transmission in the machine and therefore feature high material stability. Chains used in Heidelberg machines are specially developed for mechanical engineering applications and ensure optimum performance.



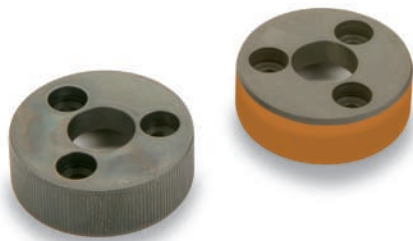
## Chains

Designation	Article no.	Type of machine	Description
Chain deflection pin	<b>ZM.606631</b>	All die cutters	-
Transport chain	<b>ZM.11300E</b>	WPM 304/400	Completely preassembled with accessories (incl. lock and pin)
Transport chain	<b>ZM.11400E</b>	Dymatrix 106/113, WPM 304/400	Completely preassembled with accessories (incl. lock and pin)
Transport chain	<b>MN.0201221/00</b>	Dymatrix 106/113, WPM 400	Not preassembled, 16 individual segments
Transport chain	<b>MN.5300801/00</b>	Dymatrix 105 CS, WPM 300	Not preassembled, 16 individual segments

## Rollers


Each of our rollers is specially developed for its own specific application. Pull rolls, for example, are in direct contact with the printing stock being processed so their material properties influence the processing. By varying the pull roll materials, the side lay can be

individually adapted. Original Heidelberg rollers are tested by us for durability in load and fatigue tests. Their use therefore not only prevents unplanned machine downtimes, but also offers the benefits of long changeover cycles.



## Rollers

Article no.	Type of machine	Description
<b>ZM.606202</b>	All die cutters	Knurled
<b>ZM.303883</b>	All die cutters	Polyester urethane rubber, plastic-coated
<b>ZM.300234</b>	All die cutters	Serrated
<b>ZM.606201</b>	All die cutters	Ceramic-coated

 We recommend always having these parts replaced by a Heidelberg Systemservice engineer.

## Belts

The belts of the die cutters are a key factor in producing an optimum result. They must therefore meet the highest quality standards. Original Heidelberg belts are designed to meet these needs and ensure a smooth production workflow. For instance, they combine high abrasion resistance with outstanding

adhesion, ensuring uninterrupted sheet travel. This keeps both the end product and the machine clean. Our robust Original Heidelberg belts run with low vibration even at high speeds, are very stable and resistant to deformation, and deliver optimum power transmission.



## Belts

Designation	Article no.	Type of machine	Description
Belt, long	<b>MN.0400065/00</b>	Feeder W4	-
Belt, short	<b>MN.0400055/00</b>	Feeder W4	-
Belts 1 and 5	<b>MN.0400025/00</b>	Feeder W6	-
Belts 2 and 4	<b>MN.0400035/00</b>	Feeder W6	-
Belt 3	<b>MN.0400045/00</b>	Feeder W6	-
Belt	<b>MN.0400085/00</b>	Feeder W2	-
Belt	<b>ZM.304426</b>	Feeder W3	Not bonded, for lateral auxiliary pile
Belt	<b>ZM.306372</b>	Feeder W3	Bonded, for lateral auxiliary pile
Belt	<b>ZM.309833</b>	Feeder W3	Open, not bonded, for auxiliary pile under belt table
Belt	<b>ZM.309159</b>	Feeder W3	Bonded, for auxiliary pile under belt table
Flat belt	<b>ZM.009101</b>	Dymatrix 106/113, WPM 304/400	-
Flat belt	<b>ZM.000749</b>	Dymatrix 105 CS, WPM 300 A	-

## Suckers

Original Heidelberg suckers are particularly resistant to wear. The plastics they are made from are specially selected and combined by our partners to ensure optimum suction. Our suckers therefore have exactly

what it takes to meet the high standards we set for our machines. Trust our experience and Heidelberg quality – tried-and-tested in load and fatigue tests.



### Sucker, concertina

Article no.	Type of machine
ZM.008301	All feeders



### Sucker

Article no.	Type of machine
ZM.009168	All feeders



## Suction discs

Designation	Article no.	Type of machine	Description/size (mm)
Suction disc	ZM.008360	All feeders	38 × 15 × 1, transparent brown
Suction disc	ZM.008275	All feeders	38 × 15 × 1, blue
Suction disc	ZM.008420	All feeders	32 × 15 × 1.5, blue
Suction disc	ZM.008680	All feeders	32 × 15 × 1, blue
Suction disc	ZM.008255	All machines	35 × 15 × 1, transparent brown