

( )  
INTERSTATE COUNCIL FOR STANDARDIZATION, METROLOGY AND CERTIFICATION  
(ISC)

**IEC 60670-22-  
2016**

,

2 2

(IEC 60670-22:2003, )



2017

IEC 60670-22—2016

1.0—2015 «  
 1.2—2015 «  
 » ( « »)  
 5  
 2  
 3  
 ( 22 2016 . No 93- )

{ 31 » 004—97	no ( 31 ) 004—97	
	AM 2 KG RU	

4 11  
 2017 . No 271- IEC 60670-22—2016  
 1 2017 .

5 IEC 60670-22:2003 «  
 22.  
 » («Boxes and enclosures for electrical accessories for household and similar fixed electrical installations — Part 22: Particular requirements for connecting boxes and enclosures». IDT).

- — ;  
 - — ;  
 • — :  
 - — .  
 23 «  
 »,  
 (IEC). 23  
 « )»

6



IEC 60670-22—2016

1	.....	1
2	.....	1
3	.....	1
4	.....	2
5	.....	2
6	.....	2
7	.....	3
8	.....	3
9	.....	3
10	.....	3
11	.....	3
12	.....	4
13	.....	4
14	.....	4
15	.....	5
16	.....	5
17	.....	6
18	.....	7
19	.....	7
20	.....	7
21	.....	7
	( ) / .....	8
	( ) .....	9

IEC 60670-1.8

IEC 60670-1.

101.

Федеральное агентство  
по техническому регулированию  
и метрологии

Федеральное агентство  
по техническому регулированию  
и метрологии

Федеральное агентство  
по техническому регулированию  
и метрологии

Boxes and enclosures for electrical accessories for household and similar fixed electrical installations.  
Part 22. Particular requirements for connecting boxes and enclosures

— 2017—09—01

1

1 : ( ) / -  
 ^). — , « »

2

1 :  
 IEC 60 98 ( ) Connecting devices for low-voltage circuits for household and similar purposes -  
 ( )  
 IEC 60999-1:1999 Connecting devices. Electrical copper conductors. Safety requirements for screw-type and screwless-type clamping units. Part 1. General requirements and particular requirements for clamping units for conductors from 0.2 mm<sup>2</sup> up to 35 mm<sup>2</sup> (included) ( -  
 1.  
 0.2 2 36 2 ( ) )

3

1 :  
 3.101 (connecting box, junction box): -  
 PEV 841-27-04  
 3.101.1 (junction connecting box):  
 3.101.2 (tapping connecting box): -  
 ( -  
 )

IEC 60670\*22—2016

	—	3.101.1	3.101.2		
3.101.3				(cord outlet connecting box):	*
3.102				(connecting box	
with integral clamping units):				(	*
)					
3.103				(connecting box	
with incorporated terminals or connecting devices):				(	*
)					
3.104				(connecting	
box with provisions for subsequent incorporation of terminals or connecting devices):					*
3.105				(	
(connecting box with floating terminals or connecting devices):					
)					
3.106				(rated connecting capacity):	-
3.107				(terminal):	-
3.108				(clamping unit): ( ) ,	-
				( ) ,	-
3.109				(connecting device):	-
/					-
4					
				1.	
5					
				1	:
5.2					
6					
				1	:
6.1				130 8.250 . 450 . 750 . 1000	1500 -
6.2					0.2 2. 0.34 2.
0.5	2.0.75	2.1	2.1.5	2,2.5	2.4
				2.6	2.10
				2.16	2.25
				2.35	2.
				1 — 8	
				. AWG	)
					2.



(AWG) 2 — IEC 60990-1. 2 —  
 3 —  
 1.25 .  
 \*! — 8 0.9 2.1.25 2.  
 2.0 2.3.5 2.5.5 2.8 2.14 2.22 2.

7

1 :

7.101 -	7.101.1	
	7.101.2	
	7.101.3	- -
	7.101.4 ( )	-

8

1 :

8.1 j):  
 k) ( . 1).  
 l) ( . 1 2), ( . 1 2).  
 1 — ) l) :  
 • ) l)  
 • ) l)  
 • ) l)  
 7. 1.4. 1) ).  
 2 — . l)  
 ). 7.101.4 . l)  
 :

8.101

.....V  
 ..... 2 nnnAWG

9

1.

10

1.

11

1.

IEC 60670\*22—2016

## 12

12.1 : 1

12.101

2 IEC 60998.

12.102 1) ) 8.1

2 IEC 60998

12.103  
7.101.3.

7.101.4. 12.102.

7.101.1. 7.101.2  
16.102.

## 13

13.3.3 : 1

14.2. 7.101.4. 5

## 14

14.2.101 1. :

500 . 1  
a) ,

b) ,

15

15.1 : 1  
 :  
 — , 102. , -

16

16.101 : 1  
 , ,

16.101.1 16.101.1 16.101.3  
 (82 ± 2) ® 1  
 , , - , -  
 , , -

IEC 61032. 5 . , -

16.101.2 , -

(70 ± 2) , (40 ± 2) " . 16.1 1. , -

16.101.3 16.102. , -

16.102 (125 ± 2) \* . , -

16.102.4. , -

16.102.1 16.102.1 16.102.3 ( . 101). -

16.102.2 3 , -

, 3 ( . 102).  
 16.102.3

2 1 10 \* . IEC 60996.  
 10 !

16.102.4 , -

, 1 / . 101 -

( . , ). -

IEC 60670-22—2016

101—

0.2	4
0.34	5
0.5	6
0.75	9
1	13.5
1.5	17.5
2.5	24
4	32
6	41
10	57
16	76
25	101
35	125

45

16.101.2

17

102.

102—

S 130	1.5
> 130 S 250	3.0
>250 450	4.0
> 4S0 S 750	6.0
> 750	8.0

7.101.4.

18

19

20

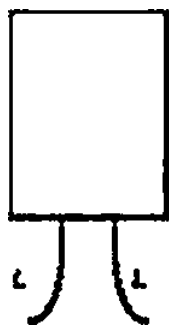
21

1.

1.

1.

1.



1 1 — \*« 0> 2 »  
 l. 2» 10

101 —

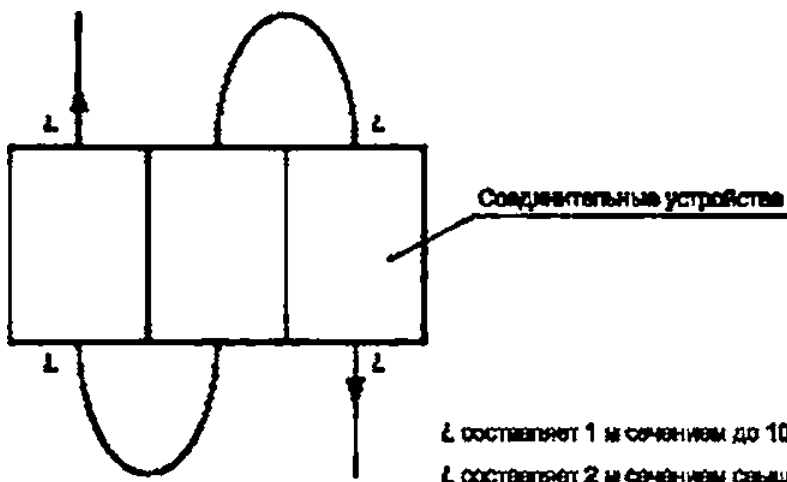
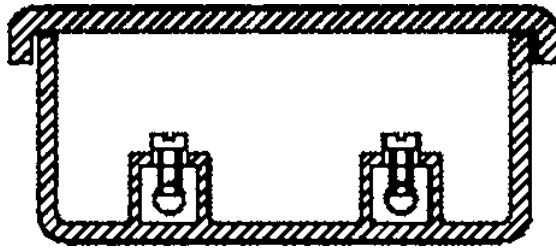


Рисунок 102 — Многопозиционное оконечное устройство

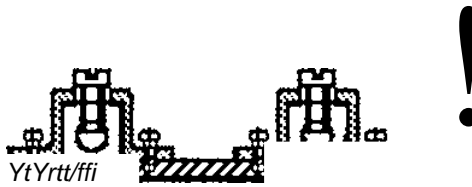
IEC 60670\*22—2016

( )

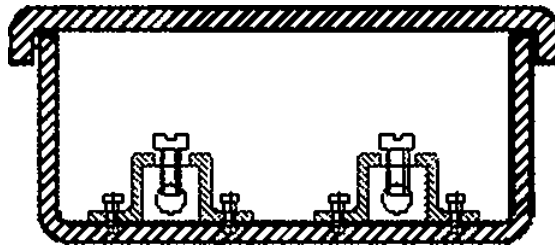
/



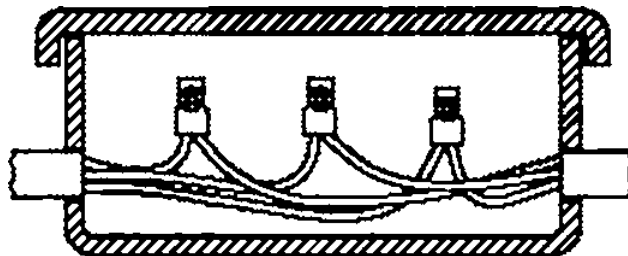
—



—



—



d—

1—

/

( )

.1

	»	
IEC 60998 ( )		IEC 60998-2-4—2013 « - 2-4. »
		IEC 60998-2-1—2013 « - 2-1. - »
		IEC 60998-2-2—2013 « - 2-2. - »
IEC 60999-1:1999	MOD	31602.1—2012 « - 1. . 0.2 3S . »
<ul style="list-style-type: none"> <li>• —</li> <li>• MOD —</li> </ul>		

IEC 60670-22—2016

621.315.673.1:006.354

29.120.10

: , , , ,

11—2016/200

0. .

13.04 2017. 02.05 2017. 60-64/1.  
. . . 1.86. . . . 1.69. 2S . . 600.

« . 123005 , .. 4.  
www.goslinfo.ru infoQgostinfo.iu