



HELUKABEL®



 Cable Accessories

Cable Lugs

of Copper and Aluminium



10-12011

■ TABLE OF CONTENTS

| | |
|--|-----------|
| CABLE LUGS | 2 |
| HELU-S-RK-CU | 4 |
| HELU-S-RK-CU-UL | 5 |
| HELU-S-RK-45-CU | 7 |
| HELU-S-RK-45-CU-UL | 8 |
| HELU-S-RK-90-CU-UL | 9 |
| HELU-S-RK-S-CU-UL | 11 |
| HELU-S-PK-CU-DIN | 12 |
| HELU-S-PK-AL-DIN | 14 |
| HELU-S-PK-AL/CU | 15 |
| HELU-S-SV-CU | 17 |
| HELU-S-PV-CU-DIN | 18 |
| HELU-S-PV-AL-DIN | 19 |
| HELU-S-PV-AL/CU | 20 |
| KAC-U | 21 |
| TOOLS | 22 |
| HELUTOOL HKS 1 | 24 |
| HELUTOOL HKS 35 | 25 |
| HELUTOOL HKS 32 | 26 |
| HELUTOOL HKS 34 S | 27 |
| HELUTOOL HKS 52 S | 28 |
| HELUTOOL HKM 1 | 29 |
| HELUTOOL HAM 1 | 30 |
| HELUTOOL HWZ 6 | 31 |
| HELUTOOL HWW 6/50 | 32 |
| HELUTOOL HWW 10/120 | 33 |
| HELUTOOL HMPI 20 | 34 |
| HELUTOOL HHPI 20 | 35 |
| HELUTOOL HAPI 20 | 36 |
| HELU-S-PE-WM | 37 |
| HELU-S-PE-SK | 38 |
| PART NO. INDEX | 39 |
| INSTALLATION NOTES | 40 |
| COMPRESSION INSTRUCTION WM | 41 |
| COMPRESSION INSTRUCTION DIN CU | 42 |
| COMPRESSION INSTRUCTION DIN ALU | 43 |
| CABLE ACCESSORIES | 44 |

CABLE LUGS



■ TABLE OF CONTENTS

| | |
|--------------------------|----------|
| CABLE LUGS | 2 |
| HELU-S-RK-CU | 4 |
| HELU-S-RK-CU-UL | 5 |
| HELU-S-RK-45-CU | 7 |
| HELU-S-RK-45-CU-UL | 8 |
| HELU-S-RK-90-CU-UL | 9 |
| HELU-S-RK-S-CU-UL | 11 |
| HELU-S-PK-CU-DIN | 12 |
| HELU-S-PK-AL-DIN | 14 |
| HELU-S-PK-AL/CU | 15 |
| HELU-S-SV-CU | 17 |
| HELU-S-PV-CU-DIN | 18 |
| HELU-S-PV-AL-DIN | 19 |
| HELU-S-PV-AL/CU | 20 |
| KAC-U | 21 |

Good to know!

Don't even think about reduction sleeves & special cable lugs



Thanks to the intensive WM-compression, pre-compressed, multi-stranded wires and fine stranded wires can be used in the tubular cable lug.

It can be done without sleeves for compacted conductors exactly as without special cable lugs.

Your advantages:

- cost effective
- easy storage
- 100% safe montage
- time saving

HELU-S-RK-CU Copper tubular cable lug - straight



Tubular cable lug HELU-S-RK-CU

Uninsulated, straight tubular cable lugs in eye type design.

Material

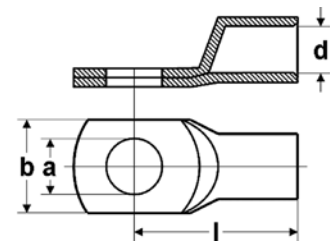
Socket: Copper according to DIN EN 13600
Surface: tin plated

Note

Also available in angulated version (45° and 90°).

Technical data

Temperature range: up to +120°C



Abmessungen

- a Diameter of the boring
- d Inner diameter of the cable insertion
- b Flange width
- l Length till middle of the boring

| Part no. | Type | Cross-section mm ² | a mm | d mm | b mm | l mm | Code type | Weight kg / 1000 items | Unit | Net EUR/100 items at a purchase of | | |
|----------|---------------------|----------------------------------|---------|---------|---------|---------|--------------|------------------------------|------|------------------------------------|-----------|------------|
| | | | | | | | | | | up to 100 | 101 - 500 | 501 - 1000 |
| 907303 | HELU-S-RK-CU 0,75-3 | 0,75 | 3,2 | 1,4 | 6,5 | 12,5 | - | 0,7 | 100 | o. r. | o. r. | o. r. |
| 907304 | HELU-S-RK-CU 0,75-4 | 0,75 | 4,3 | 1,4 | 8,5 | 14,0 | - | 0,8 | 100 | o. r. | o. r. | o. r. |
| 907305 | HELU-S-RK-CU 0,75-5 | 0,75 | 5,3 | 1,4 | 10,0 | 15,0 | - | 1,0 | 100 | o. r. | o. r. | o. r. |
| 907306 | HELU-S-RK-CU 1,5-3 | 1,5 | 3,2 | 1,9 | 6,5 | 14,0 | - | 1,2 | 100 | o. r. | o. r. | o. r. |
| 907307 | HELU-S-RK-CU 1,5-4 | 1,5 | 4,3 | 1,9 | 8,5 | 15,0 | - | 1,4 | 100 | o. r. | o. r. | o. r. |
| 907308 | HELU-S-RK-CU 1,5-5 | 1,5 | 5,3 | 1,9 | 10,0 | 16,0 | - | 1,5 | 100 | o. r. | o. r. | o. r. |
| 907309 | HELU-S-RK-CU 1,5-6 | 1,5 | 6,4 | 1,9 | 11,0 | 18,0 | - | 1,7 | 100 | o. r. | o. r. | o. r. |
| 907310 | HELU-S-RK-CU 2,5-4 | 2,5 | 4,3 | 2,4 | 8,5 | 15,0 | - | 1,6 | 100 | o. r. | o. r. | o. r. |
| 907311 | HELU-S-RK-CU 2,5-5 | 2,5 | 5,3 | 2,4 | 10,0 | 16,0 | - | 1,8 | 100 | o. r. | o. r. | o. r. |
| 907312 | HELU-S-RK-CU 2,5-6 | 2,5 | 6,4 | 2,4 | 11,0 | 18,0 | - | 1,9 | 100 | o. r. | o. r. | o. r. |
| 907313 | HELU-S-RK-CU 2,5-8 | 2,5 | 8,4 | 2,4 | 13,0 | 20,0 | - | 2,2 | 100 | o. r. | o. r. | o. r. |
| 907314 | HELU-S-RK-CU 4-4 | 4,0 | 4,3 | 3,0 | 8,5 | 17,0 | - | 2,2 | 100 | o. r. | o. r. | o. r. |
| 907315 | HELU-S-RK-CU 4-5 | 4,0 | 5,3 | 3,0 | 10,0 | 18,0 | - | 2,4 | 100 | o. r. | o. r. | o. r. |
| 907316 | HELU-S-RK-CU 4-6 | 4,0 | 6,3 | 3,0 | 11,0 | 20,0 | - | 2,6 | 100 | o. r. | o. r. | o. r. |
| 907317 | HELU-S-RK-CU 4-8 | 4,0 | 8,4 | 3,0 | 14,0 | 22,0 | - | 3,0 | 100 | o. r. | o. r. | o. r. |

Dimensions and specifications may be changed without prior notice.

o. r. = on request

HELU-S-RK-CU-UL Copper tubular cable lug - straight



Tubular cable lug HELU-S-RK-CU-UL

Uninsulated, straight tubular cable lugs in eye type design.

Material

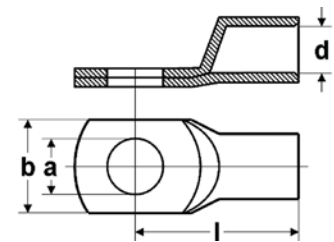
Socket: Copper according to DIN EN 13600
Surface: tin plated

Note

Also available in angulated version (45° and 90°).

Technical data

Temperature range: up to +120°C



Abmessungen

- a Diameter of the boring
- d Inner diameter of the cable insertion
- b Flange width
- l Length till middle of the boring

| Part no. | Type | Cross-section mm ² | a mm | d mm | b mm | l mm | Code type | Weight kg / 1000 items | Unit | Net EUR/100 items at a purchase of | | |
|----------|-----------------------|----------------------------------|---------|---------|---------|---------|--------------|------------------------------|------|------------------------------------|-----------|------------|
| | | | | | | | | | | up to 100 | 101 - 500 | 501 - 1000 |
| 907318 | HELU-S-RK-CU-UL 6-4 | 6,0 | 4,3 | 3,5 | 10,0 | 19,0 | - | 4,6 | 100 | o. r. | o. r. | o. r. |
| 907319 | HELU-S-RK-CU-UL 6-5 | 6,0 | 5,3 | 3,5 | 10,0 | 20,0 | - | 4,7 | 100 | o. r. | o. r. | o. r. |
| 907320 | HELU-S-RK-CU-UL 6-6 | 6,0 | 6,4 | 3,5 | 11,0 | 21,5 | - | 5,4 | 100 | o. r. | o. r. | o. r. |
| 907321 | HELU-S-RK-CU-UL 6-8 | 6,0 | 8,4 | 3,5 | 15,0 | 24,0 | - | 5,9 | 100 | o. r. | o. r. | o. r. |
| 907322 | HELU-S-RK-CU-UL 6-10 | 6,0 | 10,5 | 3,5 | 18,0 | 26,0 | - | 6,4 | 100 | o. r. | o. r. | o. r. |
| 907323 | HELU-S-RK-CU-UL 6-12 | 6,0 | 13,0 | 3,5 | 19,0 | 27,5 | - | 6,4 | 100 | o. r. | o. r. | o. r. |
| 907324 | HELU-S-RK-CU-UL 10-4 | 10,0 | 4,3 | 4,5 | 12,0 | 20,0 | - | 4,3 | 100 | o. r. | o. r. | o. r. |
| 907325 | HELU-S-RK-CU-UL 10-5 | 10,0 | 5,3 | 4,5 | 12,0 | 21,0 | - | 4,8 | 100 | o. r. | o. r. | o. r. |
| 907326 | HELU-S-RK-CU-UL 10-6 | 10,0 | 6,4 | 4,5 | 12,0 | 22,5 | - | 5,1 | 100 | o. r. | o. r. | o. r. |
| 907327 | HELU-S-RK-CU-UL 10-8 | 10,0 | 8,4 | 4,5 | 15,0 | 25,0 | - | 5,8 | 100 | o. r. | o. r. | o. r. |
| 907328 | HELU-S-RK-CU-UL 10-10 | 10,0 | 10,5 | 4,4 | 18,0 | 27,0 | - | 6,3 | 100 | o. r. | o. r. | o. r. |
| 907329 | HELU-S-RK-CU-UL 10-12 | 10,0 | 13,0 | 4,5 | 20,0 | 28,5 | - | 6,3 | 100 | o. r. | o. r. | o. r. |
| 907330 | HELU-S-RK-CU-UL 16-4 | 16,0 | 4,3 | 5,5 | 12,0 | 24,0 | - | 8,2 | 100 | o. r. | o. r. | o. r. |
| 907331 | HELU-S-RK-CU-UL 16-5 | 16,0 | 5,3 | 5,5 | 12,0 | 25,0 | - | 8,9 | 100 | o. r. | o. r. | o. r. |
| 907332 | HELU-S-RK-CU-UL 16-6 | 16,0 | 6,4 | 5,5 | 12,0 | 26,5 | - | 9,6 | 100 | o. r. | o. r. | o. r. |
| 907333 | HELU-S-RK-CU-UL 16-8 | 16,0 | 8,4 | 5,5 | 15,0 | 29,0 | - | 10,3 | 100 | o. r. | o. r. | o. r. |
| 907334 | HELU-S-RK-CU-UL 16-10 | 16,0 | 10,5 | 5,5 | 18,0 | 31,0 | - | 11,0 | 100 | o. r. | o. r. | o. r. |
| 907335 | HELU-S-RK-CU-UL 16-12 | 16,0 | 13,0 | 5,5 | 19,0 | 32,0 | - | 10,8 | 100 | o. r. | o. r. | o. r. |
| 907336 | HELU-S-RK-CU-UL 25-5 | 25,0 | 5,3 | 7,0 | 15,0 | 33,5 | - | 13,5 | 100 | o. r. | o. r. | o. r. |
| 907337 | HELU-S-RK-CU-UL 25-6 | 25,0 | 6,4 | 7,0 | 15,0 | 31,5 | - | 13,1 | 100 | o. r. | o. r. | o. r. |
| 907338 | HELU-S-RK-CU-UL 25-8 | 25,0 | 8,4 | 7,0 | 16,0 | 33,0 | - | 12,9 | 100 | o. r. | o. r. | o. r. |
| 907339 | HELU-S-RK-CU-UL 25-10 | 25,0 | 10,5 | 7,0 | 18,0 | 34,5 | - | 14,6 | 100 | o. r. | o. r. | o. r. |
| 907340 | HELU-S-RK-CU-UL 25-12 | 25,0 | 13,0 | 7,0 | 20,0 | 36,0 | - | 15,5 | 100 | o. r. | o. r. | o. r. |
| 907341 | HELU-S-RK-CU-UL 25-14 | 25,0 | 15,0 | 7,0 | 22,0 | 39,0 | - | 16,6 | 100 | o. r. | o. r. | o. r. |
| 907342 | HELU-S-RK-CU-UL 25-16 | 25,0 | 17,0 | 7,0 | 24,0 | 42,0 | - | 17,3 | 100 | o. r. | o. r. | o. r. |
| 907343 | HELU-S-RK-CU-UL 35-6 | 35,0 | 6,4 | 8,5 | 17,0 | 33,0 | - | 20,7 | 100 | o. r. | o. r. | o. r. |
| 907344 | HELU-S-RK-CU-UL 35-8 | 35,0 | 8,4 | 8,5 | 17,0 | 34,0 | - | 21,8 | 100 | o. r. | o. r. | o. r. |
| 907345 | HELU-S-RK-CU-UL 35-10 | 35,0 | 10,5 | 8,5 | 20,0 | 36,5 | - | 21,9 | 100 | o. r. | o. r. | o. r. |
| 907346 | HELU-S-RK-CU-UL 35-12 | 35,0 | 13,0 | 8,5 | 22,0 | 37,5 | - | 23,3 | 100 | o. r. | o. r. | o. r. |
| 907347 | HELU-S-RK-CU-UL 35-14 | 35,0 | 15,0 | 8,5 | 23,0 | 40,0 | - | 24,4 | 100 | o. r. | o. r. | o. r. |
| 907348 | HELU-S-RK-CU-UL 35-16 | 35,0 | 17,0 | 8,5 | 28,0 | 44,0 | - | 26,0 | 100 | o. r. | o. r. | o. r. |
| 907349 | HELU-S-RK-CU-UL 50-6 | 50,0 | 6,4 | 10,0 | 20,0 | 37,0 | - | 30,1 | 100 | o. r. | o. r. | o. r. |
| 907350 | HELU-S-RK-CU-UL 50-8 | 50,0 | 8,4 | 10,0 | 20,0 | 39,0 | - | 30,4 | 100 | o. r. | o. r. | o. r. |
| 907351 | HELU-S-RK-CU-UL 50-10 | 50,0 | 10,5 | 10,0 | 20,0 | 40,5 | - | 31,3 | 100 | o. r. | o. r. | o. r. |
| 907352 | HELU-S-RK-CU-UL 50-12 | 50,0 | 13,0 | 10,0 | 23,0 | 42,0 | - | 31,3 | 100 | o. r. | o. r. | o. r. |
| 907353 | HELU-S-RK-CU-UL 50-14 | 50,0 | 15,0 | 10,0 | 23,0 | 44,0 | - | 35,1 | 100 | o. r. | o. r. | o. r. |

Continuation ►

HELU-S-RK-CU-UL Copper tubular cable lug - straight



| Part no. | Type | Cross-section mm ² | a mm | d mm | b mm | l mm | Code type | Weight kg / 1000 items | Unit | Net EUR/100 items at a purchase of | | |
|----------|------------------------|----------------------------------|---------|---------|---------|---------|--------------|------------------------------|------|------------------------------------|-----------|------------|
| | | | | | | | | | | up to 100 | 101 - 500 | 501 - 1000 |
| 907354 | HELU-S-RK-CU-UL 50-16 | 50,0 | 17,0 | 10,0 | 27,0 | 46,0 | - | 35,5 | 100 | o. r. | o. r. | o. r. |
| 907355 | HELU-S-RK-CU-UL 50-20 | 50,0 | 21,0 | 10,0 | 30,5 | 52,5 | - | 38,9 | 100 | o. r. | o. r. | o. r. |
| 907356 | HELU-S-RK-CU-UL 70-6 | 70,0 | 6,4 | 12,0 | 24,0 | 40,5 | - | 41,1 | 25 | o. r. | o. r. | o. r. |
| 907357 | HELU-S-RK-CU-UL 70-8 | 70,0 | 8,4 | 12,0 | 24,0 | 42,5 | - | 44,6 | 25 | o. r. | o. r. | o. r. |
| 907358 | HELU-S-RK-CU-UL 70-10 | 70,0 | 10,5 | 12,0 | 24,0 | 43,5 | - | 46,4 | 25 | o. r. | o. r. | o. r. |
| 907359 | HELU-S-RK-CU-UL 70-12 | 70,0 | 13,0 | 12,0 | 24,0 | 45,0 | - | 47,3 | 25 | o. r. | o. r. | o. r. |
| 907360 | HELU-S-RK-CU-UL 70-14 | 70,0 | 15,0 | 12,0 | 25,0 | 46,0 | - | 49,1 | 25 | o. r. | o. r. | o. r. |
| 907361 | HELU-S-RK-CU-UL 70-16 | 70,0 | 17,0 | 12,0 | 28,0 | 48,5 | - | 49,6 | 25 | o. r. | o. r. | o. r. |
| 907362 | HELU-S-RK-CU-UL 70-20 | 70,0 | 21,0 | 12,0 | 29,0 | 52,0 | - | 52,9 | 25 | o. r. | o. r. | o. r. |
| 907363 | HELU-S-RK-CU-UL 95-6 | 95,0 | 6,4 | 13,5 | 26,0 | 43,0 | - | 49,5 | 25 | o. r. | o. r. | o. r. |
| 907364 | HELU-S-RK-CU-UL 95-8 | 95,0 | 8,4 | 13,5 | 26,0 | 46,0 | - | 53,6 | 25 | o. r. | o. r. | o. r. |
| 907365 | HELU-S-RK-CU-UL 95-10 | 95,0 | 10,5 | 13,5 | 26,0 | 47,0 | - | 55,1 | 25 | o. r. | o. r. | o. r. |
| 907366 | HELU-S-RK-CU-UL 95-12 | 95,0 | 13,0 | 13,5 | 26,0 | 48,0 | - | 55,1 | 25 | o. r. | o. r. | o. r. |
| 907367 | HELU-S-RK-CU-UL 95-14 | 95,0 | 15,0 | 13,5 | 26,0 | 51,5 | - | 58,9 | 25 | o. r. | o. r. | o. r. |
| 907368 | HELU-S-RK-CU-UL 95-16 | 95,0 | 17,0 | 13,5 | 28,0 | 51,0 | - | 58,5 | 25 | o. r. | o. r. | o. r. |
| 907369 | HELU-S-RK-CU-UL 95-20 | 95,0 | 21,0 | 13,5 | 30,0 | 55,0 | - | 61,3 | 25 | o. r. | o. r. | o. r. |
| 907370 | HELU-S-RK-CU-UL 120-8 | 120,0 | 8,4 | 15,0 | 29,0 | 49,5 | - | 68,8 | 25 | o. r. | o. r. | o. r. |
| 907371 | HELU-S-RK-CU-UL 120-10 | 120,0 | 10,5 | 15,0 | 29,0 | 52,0 | - | 79,9 | 25 | o. r. | o. r. | o. r. |
| 907372 | HELU-S-RK-CU-UL 120-12 | 120,0 | 13,0 | 15,0 | 29,0 | 51,5 | - | 78,4 | 25 | o. r. | o. r. | o. r. |
| 907373 | HELU-S-RK-CU-UL 120-14 | 120,0 | 15,0 | 15,0 | 30,0 | 53,0 | - | 78,6 | 25 | o. r. | o. r. | o. r. |
| 907374 | HELU-S-RK-CU-UL 120-16 | 120,0 | 17,0 | 15,0 | 30,0 | 55,0 | - | 80,7 | 25 | o. r. | o. r. | o. r. |
| 907375 | HELU-S-RK-CU-UL 120-20 | 120,0 | 21,0 | 15,0 | 35,0 | 60,0 | - | 89,0 | 25 | o. r. | o. r. | o. r. |
| 907376 | HELU-S-RK-CU-UL 150-8 | 150,0 | 8,4 | 16,8 | 31,0 | 55,5 | - | 78,9 | 25 | o. r. | o. r. | o. r. |
| 907377 | HELU-S-RK-CU-UL 150-10 | 150,0 | 10,5 | 16,8 | 31,0 | 56,5 | - | 83,7 | 25 | o. r. | o. r. | o. r. |
| 907378 | HELU-S-RK-CU-UL 150-12 | 150,0 | 13,0 | 16,8 | 31,0 | 56,0 | - | 80,7 | 25 | o. r. | o. r. | o. r. |
| 907379 | HELU-S-RK-CU-UL 150-14 | 150,0 | 15,0 | 16,8 | 31,0 | 57,0 | - | 83,0 | 25 | o. r. | o. r. | o. r. |
| 907380 | HELU-S-RK-CU-UL 150-16 | 150,0 | 17,0 | 16,8 | 31,0 | 58,0 | - | 83,6 | 25 | o. r. | o. r. | o. r. |
| 907381 | HELU-S-RK-CU-UL 150-20 | 150,0 | 21,0 | 16,8 | 35,0 | 63,0 | - | 87,5 | 25 | o. r. | o. r. | o. r. |
| 907382 | HELU-S-RK-CU-UL 185-8 | 185,0 | 8,4 | 19,0 | 35,0 | 58,0 | - | 103,7 | 25 | o. r. | o. r. | o. r. |
| 907383 | HELU-S-RK-CU-UL 185-10 | 185,0 | 10,5 | 19,0 | 35,0 | 59,0 | - | 106,1 | 25 | o. r. | o. r. | o. r. |
| 907384 | HELU-S-RK-CU-UL 185-12 | 185,0 | 13,0 | 19,0 | 35,0 | 58,5 | - | 106,0 | 25 | o. r. | o. r. | o. r. |
| 907385 | HELU-S-RK-CU-UL 185-14 | 185,0 | 15,0 | 19,0 | 35,0 | 61,0 | - | 107,2 | 25 | o. r. | o. r. | o. r. |
| 907386 | HELU-S-RK-CU-UL 185-16 | 185,0 | 17,0 | 19,0 | 35,0 | 63,0 | - | 108,6 | 25 | o. r. | o. r. | o. r. |
| 907387 | HELU-S-RK-CU-UL 185-20 | 185,0 | 21,0 | 19,0 | 35,0 | 66,0 | - | 113,3 | 25 | o. r. | o. r. | o. r. |
| 907388 | HELU-S-RK-CU-UL 240-8 | 240,0 | 8,4 | 21,0 | 38,0 | 67,0 | - | 124,0 | 25 | o. r. | o. r. | o. r. |
| 907389 | HELU-S-RK-CU-UL 240-10 | 240,0 | 10,5 | 21,0 | 38,0 | 67,0 | - | 129,7 | 25 | o. r. | o. r. | o. r. |
| 907390 | HELU-S-RK-CU-UL 240-12 | 240,0 | 13,0 | 21,0 | 38,0 | 67,0 | - | 130,2 | 25 | o. r. | o. r. | o. r. |
| 907391 | HELU-S-RK-CU-UL 240-14 | 240,0 | 15,0 | 21,0 | 38,0 | 69,0 | - | 133,6 | 25 | o. r. | o. r. | o. r. |
| 907392 | HELU-S-RK-CU-UL 240-16 | 240,0 | 17,0 | 21,0 | 38,0 | 69,5 | - | 135,6 | 20 | o. r. | o. r. | o. r. |
| 907393 | HELU-S-RK-CU-UL 240-20 | 240,0 | 21,0 | 21,0 | 38,0 | 71,0 | - | 138,0 | 25 | o. r. | o. r. | o. r. |
| 907394 | HELU-S-RK-CU-UL 300-10 | 300,0 | 10,5 | 24,0 | 44,0 | 79,5 | - | 204,5 | 20 | o. r. | o. r. | o. r. |
| 907395 | HELU-S-RK-CU-UL 300-12 | 300,0 | 13,0 | 24,0 | 44,0 | 82,0 | - | 211,8 | 20 | o. r. | o. r. | o. r. |
| 907396 | HELU-S-RK-CU-UL 300-14 | 300,0 | 15,0 | 24,0 | 44,0 | 84,0 | - | 221,9 | 20 | o. r. | o. r. | o. r. |
| 907397 | HELU-S-RK-CU-UL 300-16 | 300,0 | 17,0 | 24,0 | 44,0 | 85,0 | - | 219,4 | 20 | o. r. | o. r. | o. r. |
| 907398 | HELU-S-RK-CU-UL 300-20 | 300,0 | 21,0 | 24,0 | 44,0 | 85,0 | - | 224,0 | 20 | o. r. | o. r. | o. r. |
| 907399 | HELU-S-RK-CU-UL 400-10 | 400,0 | 10,5 | 27,5 | 49,0 | 92,0 | - | 279,0 | 15 | o. r. | o. r. | o. r. |
| 907400 | HELU-S-RK-CU-UL 400-12 | 400,0 | 13,0 | 27,5 | 49,0 | 92,0 | - | 278,5 | 15 | o. r. | o. r. | o. r. |
| 907401 | HELU-S-RK-CU-UL 400-16 | 400,0 | 17,0 | 27,5 | 49,0 | 92,0 | - | 276,5 | 15 | o. r. | o. r. | o. r. |
| 907402 | HELU-S-RK-CU-UL 400-20 | 400,0 | 21,0 | 27,5 | 49,0 | 92,0 | - | 266,1 | 15 | o. r. | o. r. | o. r. |
| 907403 | HELU-S-RK-CU-UL 500-12 | 500,0 | 13,0 | 31,0 | 55,5 | 113,0 | - | 493,8 | 5 | o. r. | o. r. | o. r. |
| 907404 | HELU-S-RK-CU-UL 500-16 | 500,0 | 17,0 | 31,0 | 55,5 | 113,0 | - | 493,8 | 5 | o. r. | o. r. | o. r. |
| 907405 | HELU-S-RK-CU-UL 500-20 | 500,0 | 21,0 | 31,0 | 55,5 | 113,0 | - | 485,6 | 5 | o. r. | o. r. | o. r. |
| 907406 | HELU-S-RK-CU-UL 630-16 | 630,0 | 17,0 | 34,0 | 60,0 | 115,0 | - | 513,5 | 5 | o. r. | o. r. | o. r. |
| 907407 | HELU-S-RK-CU-UL 630-20 | 630,0 | 21,0 | 34,0 | 60,0 | 115,0 | - | 506,0 | 5 | o. r. | o. r. | o. r. |

Dimensions and specifications may be changed without prior notice.

o. r. = on request

HELU-S-RK-45-CU-UL Copper tubular cable lug - 45° angled



Tubular cable lug angled HELU-S-RK-45-CU-UL

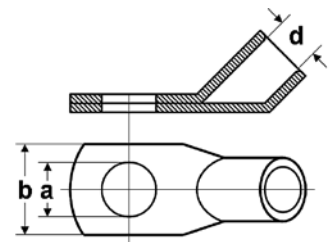
Non-insulated tubular cable lugs in eye type design, 45° angled.

Material

Socket: Copper according to DIN EN 13600
Surface: tin plated

Technical data

Temperature range: up to +120°C



Dimensions

- a Diameter of the boring
- d Inner diameter of the cable insertion
- b Flange width

| Part no. 45° | Type | Cross-section mm ² | a mm | d mm | b mm | Weight kg / 1000 items | Unit | Net EUR/ 100 items at a purchase of | | |
|-----------------|---------------------------|----------------------------------|---------|---------|---------|------------------------------|------|-------------------------------------|-----------|------------|
| | | | | | | | | up to 100 | 101 - 500 | 501 - 1000 |
| 907597 | HELU-S-RK-45-CU-UL 10-5 | 10,0 | 5,3 | 4,5 | 12,0 | 5,5 | 100 | o. r. | o. r. | o. r. |
| 907598 | HELU-S-RK-45-CU-UL 10-6 | 10,0 | 6,4 | 4,5 | 12,0 | 5,8 | 100 | o. r. | o. r. | o. r. |
| 907599 | HELU-S-RK-45-CU-UL 10-8 | 10,0 | 8,4 | 4,5 | 15,0 | 6,5 | 100 | o. r. | o. r. | o. r. |
| 907601 | HELU-S-RK-45-CU-UL 16-5 | 16,0 | 5,3 | 5,5 | 12,0 | 9,5 | 100 | o. r. | o. r. | o. r. |
| 907467 | HELU-S-RK-45-CU-UL 16-6 | 16,0 | 6,4 | 5,5 | 12,0 | 10,2 | 100 | o. r. | o. r. | o. r. |
| 907468 | HELU-S-RK-45-CU-UL 16-8 | 16,0 | 8,4 | 5,5 | 15,0 | 11,7 | 100 | o. r. | o. r. | o. r. |
| 907469 | HELU-S-RK-45-CU-UL 16-10 | 16,0 | 10,5 | 5,5 | 18,0 | 11,7 | 100 | o. r. | o. r. | o. r. |
| 907470 | HELU-S-RK-45-CU-UL 25-6 | 25,0 | 6,4 | 7,0 | 15,0 | 13,9 | 100 | o. r. | o. r. | o. r. |
| 907471 | HELU-S-RK-45-CU-UL 25-8 | 25,0 | 8,4 | 7,0 | 16,0 | 15,1 | 100 | o. r. | o. r. | o. r. |
| 907472 | HELU-S-RK-45-CU-UL 25-10 | 25,0 | 10,5 | 7,0 | 18,0 | 16,6 | 100 | o. r. | o. r. | o. r. |
| 907473 | HELU-S-RK-45-CU-UL 25-12 | 25,0 | 13,0 | 7,0 | 20,0 | 17,0 | 100 | o. r. | o. r. | o. r. |
| 907474 | HELU-S-RK-45-CU-UL 35-6 | 35,0 | 6,4 | 8,5 | 17,0 | 21,7 | 50 | o. r. | o. r. | o. r. |
| 907475 | HELU-S-RK-45-CU-UL 35-8 | 35,0 | 8,4 | 8,5 | 17,0 | 22,3 | 50 | o. r. | o. r. | o. r. |
| 907476 | HELU-S-RK-45-CU-UL 35-10 | 35,0 | 10,5 | 8,5 | 20,0 | 23,4 | 50 | o. r. | o. r. | o. r. |
| 907477 | HELU-S-RK-45-CU-UL 35-12 | 35,0 | 13,0 | 8,5 | 22,0 | 24,0 | 50 | o. r. | o. r. | o. r. |
| 907479 | HELU-S-RK-45-CU-UL 50-8 | 50,0 | 8,4 | 10,0 | 20,0 | 33,4 | 50 | o. r. | o. r. | o. r. |
| 907480 | HELU-S-RK-45-CU-UL 50-10 | 50,0 | 10,5 | 10,0 | 20,0 | 36,5 | 50 | o. r. | o. r. | o. r. |
| 907481 | HELU-S-RK-45-CU-UL 50-12 | 50,0 | 13,0 | 10,0 | 23,0 | 36,5 | 50 | o. r. | o. r. | o. r. |
| 907482 | HELU-S-RK-45-CU-UL 70-8 | 70,0 | 8,4 | 12,0 | 24,0 | 49,0 | 25 | o. r. | o. r. | o. r. |
| 907483 | HELU-S-RK-45-CU-UL 70-10 | 70,0 | 10,5 | 12,0 | 24,0 | 52,3 | 25 | o. r. | o. r. | o. r. |
| 907484 | HELU-S-RK-45-CU-UL 70-12 | 70,0 | 13,0 | 12,0 | 24,0 | 53,4 | 25 | o. r. | o. r. | o. r. |
| 907485 | HELU-S-RK-45-CU-UL 95-8 | 95,0 | 8,4 | 13,5 | 26,0 | 61,8 | 25 | o. r. | o. r. | o. r. |
| 907486 | HELU-S-RK-45-CU-UL 95-10 | 95,0 | 10,5 | 13,5 | 26,0 | 62,0 | 25 | o. r. | o. r. | o. r. |
| 907487 | HELU-S-RK-45-CU-UL 95-12 | 95,0 | 13,0 | 13,5 | 26,0 | 62,0 | 25 | o. r. | o. r. | o. r. |
| 907489 | HELU-S-RK-45-CU-UL 120-8 | 120,0 | 8,4 | 15,0 | 29,0 | 78,0 | 25 | o. r. | o. r. | o. r. |
| 907490 | HELU-S-RK-45-CU-UL 120-10 | 120,0 | 10,5 | 15,0 | 29,0 | 89,0 | 25 | o. r. | o. r. | o. r. |
| 907491 | HELU-S-RK-45-CU-UL 120-12 | 120,0 | 13,0 | 15,0 | 29,0 | 89,1 | 25 | o. r. | o. r. | o. r. |
| 907492 | HELU-S-RK-45-CU-UL 120-16 | 120,0 | 17,0 | 15,0 | 30,0 | 93,1 | 25 | o. r. | o. r. | o. r. |
| 907494 | HELU-S-RK-45-CU-UL 150-10 | 150,0 | 10,5 | 16,8 | 31,0 | 98,0 | 25 | o. r. | o. r. | o. r. |
| 907495 | HELU-S-RK-45-CU-UL 150-12 | 150,0 | 13,0 | 16,8 | 31,0 | 96,8 | 25 | o. r. | o. r. | o. r. |
| 907496 | HELU-S-RK-45-CU-UL 150-16 | 150,0 | 17,0 | 16,8 | 31,0 | 101,2 | 25 | o. r. | o. r. | o. r. |
| 907498 | HELU-S-RK-45-CU-UL 185-10 | 185,0 | 10,5 | 19,0 | 35,0 | 123,5 | 20 | o. r. | o. r. | o. r. |
| 907499 | HELU-S-RK-45-CU-UL 185-12 | 185,0 | 13,0 | 19,0 | 35,0 | 122,4 | 20 | o. r. | o. r. | o. r. |
| 907500 | HELU-S-RK-45-CU-UL 185-16 | 185,0 | 17,0 | 19,0 | 35,0 | 128,4 | 20 | o. r. | o. r. | o. r. |
| 907501 | HELU-S-RK-45-CU-UL 185-20 | 185,0 | 21,0 | 19,0 | 35,0 | 139,9 | 20 | o. r. | o. r. | o. r. |
| 907502 | HELU-S-RK-45-CU-UL 240-12 | 240,0 | 13,0 | 21,0 | 38,0 | 154,6 | 15 | o. r. | o. r. | o. r. |
| 907503 | HELU-S-RK-45-CU-UL 240-16 | 240,0 | 17,0 | 21,0 | 38,0 | 165,1 | 15 | o. r. | o. r. | o. r. |
| 907504 | HELU-S-RK-45-CU-UL 240-20 | 240,0 | 21,0 | 21,0 | 38,0 | 170,4 | 15 | o. r. | o. r. | o. r. |

Dimensions and specifications may be changed without prior notice.

HELU-S-RK-45-CU Copper tubular cable lug - 45° angled



Tubular cable lug angled HELU-S-RK-45-CU

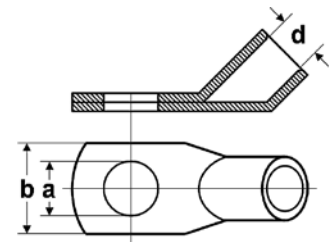
Non-insulated tubular cable lugs in eye type design, 45° angled.

Material

Socket: Copper according to DIN EN 13600
Surface: tin plated

Technical data

Temperature range: up to +120°C



Dimensions

- a Diameter of the boring
- d Inner diameter of the cable insertion
- b Flange width

| Part no. 45° | Type | Cross-section mm ² | a mm | d mm | b mm | Weight kg / 1000 items | Unit | Net EUR/100 items at a purchase of | | |
|-----------------|------------------------|----------------------------------|---------|---------|---------|------------------------------|------|------------------------------------|-----------|------------|
| | | | | | | | | up to 100 | 101 - 500 | 501 - 1000 |
| 907600 | HELU-S-RK-45-CU 10-10 | 10,0 | 10,5 | 4,5 | 18,0 | 6,6 | 100 | o. r. | o. r. | o. r. |
| 907478 | HELU-S-RK-45-CU 50-6 | 50,0 | 6,4 | 10,0 | 20,0 | 29,4 | 50 | o. r. | o. r. | o. r. |
| 907488 | HELU-S-RK-45-CU 95-16 | 95,0 | 17,0 | 13,5 | 28,0 | 68,0 | 25 | o. r. | o. r. | o. r. |
| 907493 | HELU-S-RK-45-CU 150-8 | 150,0 | 8,4 | 16,8 | 31,0 | 113,1 | 25 | o. r. | o. r. | o. r. |
| 907497 | HELU-S-RK-45-CU 150-20 | 150,0 | 21,0 | 16,8 | 35,0 | 101,2 | 25 | o. r. | o. r. | o. r. |
| 907505 | HELU-S-RK-45-CU 300-12 | 300,0 | 13,0 | 24,0 | 43,0 | 257,0 | 15 | o. r. | o. r. | o. r. |
| 907506 | HELU-S-RK-45-CU 300-16 | 300,0 | 17,0 | 24,0 | 43,0 | 256,8 | 15 | o. r. | o. r. | o. r. |
| 907507 | HELU-S-RK-45-CU 300-20 | 300,0 | 21,0 | 24,0 | 43,0 | 273,0 | 15 | o. r. | o. r. | o. r. |

Dimensions and specifications may be changed without prior notice.

o. r. = on request

HELU-S-RK-90-CU-UL Copper tubular cable lug - 90° angled



Tubular cable lug angled HELU-S-RK-90-CU-UL

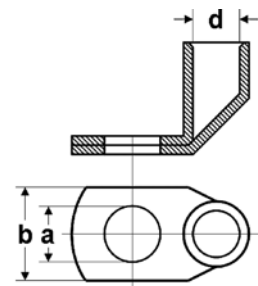
Non-insulated tubular cable lugs in eye type design, 90° angled.

Material

Socket: Copper according to DIN EN 13600
Surface: tin plated

Technical data

Temperature range: up to +120°C



Dimensions

- a Diameter of boring
- d Inner diameter of the cable insertion
- b Flange width

| Part no. 90° | Type | Cross-section mm ² | a mm | d mm | b mm | Weight kg / 1000 items | Unit | Net EUR/ 100 items at a purchase of | | |
|-----------------|--------------------------|----------------------------------|---------|---------|---------|------------------------------|------|-------------------------------------|-----------|------------|
| | | | | | | | | up to 100 | 101 - 500 | 501 - 1000 |
| 907508 | HELU-S-RK-90-CU-UL 6-5 | 6,0 | 5,3 | 3,5 | 11,0 | 5,6 | 100 | o. r. | o. r. | o. r. |
| 907509 | HELU-S-RK-90-CU-UL 6-6 | 6,0 | 6,4 | 3,5 | 11,0 | 6,2 | 100 | o. r. | o. r. | o. r. |
| 907510 | HELU-S-RK-90-CU-UL 6-8 | 6,0 | 8,4 | 3,5 | 15,0 | 6,4 | 100 | o. r. | o. r. | o. r. |
| 907511 | HELU-S-RK-90-CU-UL 6-10 | 6,0 | 10,5 | 3,5 | 18,0 | 6,8 | 100 | o. r. | o. r. | o. r. |
| 907512 | HELU-S-RK-90-CU-UL 6-12 | 6,0 | 13,0 | 3,5 | 20,0 | 6,6 | 100 | o. r. | o. r. | o. r. |
| 907513 | HELU-S-RK-90-CU-UL 10-5 | 10,0 | 5,3 | 4,5 | 12,0 | 5,4 | 100 | o. r. | o. r. | o. r. |
| 907514 | HELU-S-RK-90-CU-UL 10-6 | 10,0 | 6,4 | 4,5 | 12,0 | 5,9 | 100 | o. r. | o. r. | o. r. |
| 907515 | HELU-S-RK-90-CU-UL 10-8 | 10,0 | 8,4 | 4,5 | 15,0 | 6,7 | 100 | o. r. | o. r. | o. r. |
| 907516 | HELU-S-RK-90-CU-UL 10-10 | 10,0 | 10,5 | 4,5 | 18,0 | 7,0 | 100 | o. r. | o. r. | o. r. |
| 907517 | HELU-S-RK-90-CU-UL 10-12 | 10,0 | 13,0 | 4,5 | 20,0 | 7,0 | 100 | o. r. | o. r. | o. r. |
| 907518 | HELU-S-RK-90-CU-UL 16-5 | 16,0 | 5,3 | 5,5 | 12,0 | 10,7 | 100 | o. r. | o. r. | o. r. |
| 907519 | HELU-S-RK-90-CU-UL 16-6 | 16,0 | 6,4 | 5,5 | 12,0 | 11,5 | 100 | o. r. | o. r. | o. r. |
| 907520 | HELU-S-RK-90-CU-UL 16-8 | 16,0 | 8,4 | 5,5 | 15,0 | 12,0 | 100 | o. r. | o. r. | o. r. |
| 907521 | HELU-S-RK-90-CU-UL 16-10 | 16,0 | 10,5 | 5,5 | 18,0 | 12,3 | 100 | o. r. | o. r. | o. r. |
| 907522 | HELU-S-RK-90-CU-UL 16-12 | 16,0 | 13,0 | 5,5 | 20,0 | 12,3 | 100 | o. r. | o. r. | o. r. |
| 907523 | HELU-S-RK-90-CU-UL 25-6 | 25,0 | 6,4 | 7,0 | 15,0 | 13,5 | 100 | o. r. | o. r. | o. r. |
| 907524 | HELU-S-RK-90-CU-UL 25-8 | 25,0 | 8,4 | 7,0 | 16,0 | 14,3 | 100 | o. r. | o. r. | o. r. |
| 907525 | HELU-S-RK-90-CU-UL 25-10 | 25,0 | 10,5 | 7,0 | 18,0 | 15,7 | 100 | o. r. | o. r. | o. r. |
| 907526 | HELU-S-RK-90-CU-UL 25-12 | 25,0 | 13,0 | 7,0 | 20,0 | 15,1 | 100 | o. r. | o. r. | o. r. |
| 907527 | HELU-S-RK-90-CU-UL 35-6 | 35,0 | 6,4 | 8,5 | 17,0 | 21,0 | 100 | o. r. | o. r. | o. r. |
| 907528 | HELU-S-RK-90-CU-UL 35-8 | 35,0 | 8,4 | 8,5 | 17,0 | 23,1 | 100 | o. r. | o. r. | o. r. |
| 907529 | HELU-S-RK-90-CU-UL 35-10 | 35,0 | 10,5 | 8,5 | 20,0 | 23,6 | 100 | o. r. | o. r. | o. r. |
| 907530 | HELU-S-RK-90-CU-UL 35-12 | 35,0 | 13,0 | 8,5 | 22,0 | 23,7 | 100 | o. r. | o. r. | o. r. |
| 907531 | HELU-S-RK-90-CU-UL 35-16 | 35,0 | 17,0 | 8,5 | 28,0 | 24,8 | 100 | o. r. | o. r. | o. r. |
| 907532 | HELU-S-RK-90-CU-UL 50-6 | 50,0 | 6,4 | 10,0 | 20,0 | 30,0 | 100 | o. r. | o. r. | o. r. |
| 907533 | HELU-S-RK-90-CU-UL 50-8 | 50,0 | 8,4 | 10,0 | 20,0 | 32,2 | 100 | o. r. | o. r. | o. r. |
| 907534 | HELU-S-RK-90-CU-UL 50-10 | 50,0 | 10,5 | 10,0 | 20,0 | 33,2 | 100 | o. r. | o. r. | o. r. |
| 907535 | HELU-S-RK-90-CU-UL 50-12 | 50,0 | 13,0 | 10,0 | 23,0 | 32,8 | 100 | o. r. | o. r. | o. r. |
| 907536 | HELU-S-RK-90-CU-UL 50-16 | 50,0 | 17,0 | 10,0 | 27,0 | 36,3 | 100 | o. r. | o. r. | o. r. |
| 907537 | HELU-S-RK-90-CU-UL 50-20 | 50,0 | 21,0 | 10,0 | 30,0 | 38,9 | 100 | o. r. | o. r. | o. r. |
| 907538 | HELU-S-RK-90-CU-UL 70-6 | 70,0 | 6,4 | 12,0 | 24,0 | 44,1 | 25 | o. r. | o. r. | o. r. |
| 907539 | HELU-S-RK-90-CU-UL 70-8 | 70,0 | 8,4 | 12,0 | 24,0 | 48,6 | 25 | o. r. | o. r. | o. r. |
| 907540 | HELU-S-RK-90-CU-UL 70-10 | 70,0 | 10,5 | 12,0 | 24,0 | 50,6 | 25 | o. r. | o. r. | o. r. |
| 907541 | HELU-S-RK-90-CU-UL 70-12 | 70,0 | 13,0 | 12,0 | 24,0 | 49,4 | 25 | o. r. | o. r. | o. r. |
| 907542 | HELU-S-RK-90-CU-UL 70-16 | 70,0 | 17,0 | 12,0 | 28,0 | 51,1 | 25 | o. r. | o. r. | o. r. |
| 907543 | HELU-S-RK-90-CU-UL 70-20 | 70,0 | 21,0 | 12,0 | 29,0 | 52,6 | 25 | o. r. | o. r. | o. r. |

HELU-S-RK-90-CU-UL Copper tubular cable lug - 90° angled



| Part no. 90° | Type | Cross-section mm ² | a mm | d mm | b mm | Weight kg / 1000 items | Unit | Net EUR/100 items at a purchase of | | |
|-----------------|---------------------------|----------------------------------|---------|---------|---------|------------------------------|------|------------------------------------|-----------|------------|
| | | | | | | | | up to 100 | 101 - 500 | 501 - 1000 |
| 907544 | HELU-S-RK-90-CU-UL 95-8 | 95,0 | 8,4 | 13,5 | 26,0 | 53,3 | 25 | o. r. | o. r. | o. r. |
| 907545 | HELU-S-RK-90-CU-UL 95-10 | 95,0 | 10,5 | 13,5 | 26,0 | 55,9 | 25 | o. r. | o. r. | o. r. |
| 907546 | HELU-S-RK-90-CU-UL 95-12 | 95,0 | 13,0 | 13,5 | 26,0 | 56,6 | 25 | o. r. | o. r. | o. r. |
| 907547 | HELU-S-RK-90-CU-UL 95-16 | 95,0 | 17,0 | 13,5 | 28,0 | 60,0 | 25 | o. r. | o. r. | o. r. |
| 907548 | HELU-S-RK-90-CU-UL 120-8 | 120,0 | 8,4 | 15,0 | 29,0 | 76,3 | 25 | o. r. | o. r. | o. r. |
| 907549 | HELU-S-RK-90-CU-UL 120-10 | 120,0 | 10,5 | 15,0 | 29,0 | 80,7 | 25 | o. r. | o. r. | o. r. |
| 907550 | HELU-S-RK-90-CU-UL 120-12 | 120,0 | 13,0 | 15,0 | 29,0 | 79,9 | 25 | o. r. | o. r. | o. r. |
| 907551 | HELU-S-RK-90-CU-UL 120-16 | 120,0 | 17,0 | 15,0 | 30,0 | 84,6 | 25 | o. r. | o. r. | o. r. |
| 907552 | HELU-S-RK-90-CU-UL 150-8 | 150,0 | 8,4 | 16,8 | 31,0 | 80,3 | 25 | o. r. | o. r. | o. r. |
| 907553 | HELU-S-RK-90-CU-UL 150-10 | 150,0 | 10,5 | 16,8 | 31,0 | 80,7 | 25 | o. r. | o. r. | o. r. |
| 907554 | HELU-S-RK-90-CU-UL 150-12 | 150,0 | 13,0 | 16,8 | 31,0 | 82,9 | 25 | o. r. | o. r. | o. r. |
| 907555 | HELU-S-RK-90-CU-UL 150-16 | 150,0 | 17,0 | 16,8 | 31,0 | 85,0 | 25 | o. r. | o. r. | o. r. |
| 907556 | HELU-S-RK-90-CU-UL 150-20 | 150,0 | 21,0 | 16,8 | 35,0 | 88,9 | 25 | o. r. | o. r. | o. r. |
| 907557 | HELU-S-RK-90-CU-UL 185-10 | 185,0 | 10,5 | 19,0 | 35,0 | 114,1 | 25 | o. r. | o. r. | o. r. |
| 907558 | HELU-S-RK-90-CU-UL 185-12 | 185,0 | 13,0 | 19,0 | 35,0 | 120,4 | 25 | o. r. | o. r. | o. r. |
| 907559 | HELU-S-RK-90-CU-UL 185-16 | 185,0 | 17,0 | 19,0 | 35,0 | 124,8 | 25 | o. r. | o. r. | o. r. |
| 907560 | HELU-S-RK-90-CU-UL 185-20 | 185,0 | 21,0 | 19,0 | 35,0 | 127,0 | 25 | o. r. | o. r. | o. r. |
| 907561 | HELU-S-RK-90-CU-UL 240-10 | 240,0 | 10,5 | 21,0 | 38,0 | 133,2 | 25 | o. r. | o. r. | o. r. |
| 907562 | HELU-S-RK-90-CU-UL 240-12 | 240,0 | 13,0 | 21,0 | 38,0 | 134,0 | 25 | o. r. | o. r. | o. r. |
| 907563 | HELU-S-RK-90-CU-UL 240-16 | 240,0 | 17,0 | 21,0 | 38,0 | 137,6 | 25 | o. r. | o. r. | o. r. |
| 907564 | HELU-S-RK-90-CU-UL 240-20 | 240,0 | 21,0 | 21,0 | 38,0 | 142,3 | 25 | o. r. | o. r. | o. r. |
| 907565 | HELU-S-RK-90-CU-UL 300-12 | 300,0 | 13,0 | 24,0 | 43,0 | 199,2 | 20 | o. r. | o. r. | o. r. |
| 907566 | HELU-S-RK-90-CU-UL 300-16 | 300,0 | 17,0 | 24,0 | 43,0 | 209,0 | 20 | o. r. | o. r. | o. r. |
| 907567 | HELU-S-RK-90-CU-UL 300-20 | 300,0 | 21,0 | 24,0 | 43,0 | 218,1 | 20 | o. r. | o. r. | o. r. |

Dimensions and specifications may be changed without prior notice.

o. r. = on request

HELU-S-RK-S-CU-UL Tubular cable lug - straight - small flange

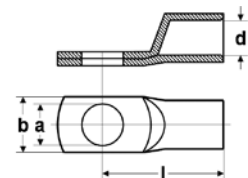


Tubular cable lug HELU-S-RK-S-CU-UL

Non-insulated tubular cable lugs in eye type design with small flange.
For screwing in switch cabinets with reduced connecting space.

Material

Socket: Copper
Surface: tinned



Dimensions

- a Diameter of the boring
- d Inner diameter of the cable insertion
- b Flange width
- l Length till middle of the boring

| Part no. straight | Type | Cross-section mm ² | a mm | d mm | b mm | Weight kg / 1000 items | Unit | Net EUR/ 100 items at a purchase of | | |
|----------------------|--------------------------|----------------------------------|---------|---------|---------|------------------------------|------|-------------------------------------|-----------|------------|
| | | | | | | | | up to 100 | 101 - 500 | 501 - 1000 |
| 90910 | HELU-S-RK-S-CU-UL 35-6 | 35,0 | 6,5 | 8,5 | 15,0 | 17,8 | 25 | o. r. | o. r. | o. r. |
| 90911 | HELU-S-RK-S-CU-UL 50-6 | 50,0 | 6,5 | 10,0 | 15,0 | 29,5 | 25 | o. r. | o. r. | o. r. |
| 90912 | HELU-S-RK-S-CU-UL 50-8 | 50,0 | 8,5 | 10,0 | 17,0 | 28,2 | 25 | o. r. | o. r. | o. r. |
| 90913 | HELU-S-RK-S-CU-UL 50-10 | 50,0 | 10,5 | 10,0 | 19,0 | 30,8 | 25 | o. r. | o. r. | o. r. |
| 90914 | HELU-S-RK-S-CU-UL 70-6 | 70,0 | 6,5 | 12,0 | 17,0 | 42,2 | 25 | o. r. | o. r. | o. r. |
| 90915 | HELU-S-RK-S-CU-UL 70-8 | 70,0 | 8,5 | 12,0 | 17,0 | 41,0 | 25 | o. r. | o. r. | o. r. |
| 90916 | HELU-S-RK-S-CU-UL 70-10 | 70,0 | 10,5 | 12,0 | 19,0 | 44,5 | 25 | o. r. | o. r. | o. r. |
| 90917 | HELU-S-RK-S-CU-UL 70-12 | 70,0 | 13,0 | 12,0 | 19,0 | 42,2 | 25 | o. r. | o. r. | o. r. |
| 90918 | HELU-S-RK-S-CU-UL 95-6 | 95,0 | 6,5 | 13,5 | 19,0 | 54,9 | 25 | o. r. | o. r. | o. r. |
| 90919 | HELU-S-RK-S-CU-UL 95-8 | 95,0 | 8,5 | 13,5 | 19,0 | 54,6 | 25 | o. r. | o. r. | o. r. |
| 90920 | HELU-S-RK-S-CU-UL 95-10 | 95,0 | 10,5 | 13,5 | 19,0 | 51,3 | 25 | o. r. | o. r. | o. r. |
| 90921 | HELU-S-RK-S-CU-UL 95-12 | 95,0 | 13,0 | 13,5 | 19,0 | 51,5 | 25 | o. r. | o. r. | o. r. |
| 90922 | HELU-S-RK-S-CU-UL 120-6 | 120,0 | 6,5 | 15,0 | 19,0 | 61,6 | 10 | o. r. | o. r. | o. r. |
| 90923 | HELU-S-RK-S-CU-UL 120-8 | 120,0 | 8,5 | 15,0 | 19,0 | 59,4 | 10 | o. r. | o. r. | o. r. |
| 90924 | HELU-S-RK-S-CU-UL 120-10 | 120,0 | 10,5 | 15,0 | 19,0 | 58,1 | 10 | o. r. | o. r. | o. r. |
| 90925 | HELU-S-RK-S-CU-UL 120-12 | 120,0 | 13,0 | 15,0 | 19,0 | 59,2 | 10 | o. r. | o. r. | o. r. |
| 90926 | HELU-S-RK-S-CU-UL 150-6 | 150,0 | 6,5 | 16,5 | 19,0 | 68,5 | 10 | o. r. | o. r. | o. r. |
| 90927 | HELU-S-RK-S-CU-UL 150-8 | 150,0 | 8,5 | 16,5 | 19,0 | 68,0 | 10 | o. r. | o. r. | o. r. |
| 90928 | HELU-S-RK-S-CU-UL 150-10 | 150,0 | 10,5 | 16,5 | 19,0 | 67,5 | 10 | o. r. | o. r. | o. r. |
| 90929 | HELU-S-RK-S-CU-UL 150-12 | 150,0 | 13,0 | 16,5 | 19,0 | 71,5 | 10 | o. r. | o. r. | o. r. |
| 90930 | HELU-S-RK-S-CU-UL 185-10 | 185,0 | 10,5 | 19,0 | 24,5 | 105,9 | 10 | o. r. | o. r. | o. r. |
| 90931 | HELU-S-RK-S-CU-UL 185-12 | 185,0 | 13,0 | 19,0 | 31,0 | 110,9 | 10 | o. r. | o. r. | o. r. |
| 90932 | HELU-S-RK-S-CU-UL 185-16 | 185,0 | 17,0 | 19,0 | 31,0 | 97,6 | 10 | o. r. | o. r. | o. r. |
| 90933 | HELU-S-RK-S-CU-UL 240-10 | 240,0 | 10,5 | 21,0 | 31,0 | 127,0 | 5 | o. r. | o. r. | o. r. |
| 90934 | HELU-S-RK-S-CU-UL 240-12 | 240,0 | 13,0 | 21,0 | 31,0 | 137,2 | 5 | o. r. | o. r. | o. r. |
| 90935 | HELU-S-RK-S-CU-UL 240-16 | 240,0 | 17,0 | 21,0 | 31,0 | 132,8 | 5 | o. r. | o. r. | o. r. |

Dimensions and specifications may be changed without prior notice.

o. r. = on request

HELU-S-PK-CU-DIN Copper tubular compression lug - straight



Tubular compression lug HELU-S-PK-CU-DIN

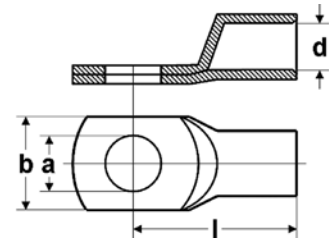
Uninsulated tubular compression lugs in eye type design for tubular arrangement RM, to DIN 46235.

Material

Socket: Copper according to DIN EN 13600
Surface: tin plated

Note

- Code type indicates the required hexagonal clamping insert.



Diameter

- a Diameter of the boring
- d Inner diameter of the cable insertion
- b Flange width
- l Length till middle of the boring

| Part no. | Type | Cross-section mm ² | a mm | d mm | b mm | l mm | Code type | Weight kg / 1000 items | Unit | Net EUR/100 items at a purchase of | | |
|----------|-------------------------|----------------------------------|---------|---------|---------|---------|--------------|------------------------------|------|------------------------------------|-----------|------------|
| | | | | | | | | | | up to 100 | 101 - 500 | 501 - 1000 |
| 907677 | HELU-S-PK-CU-DIN 6-5 | 6,0 | 5,3 | 3,7 | 8,5 | 24,0 | 5 | 3,1 | 100 | o. r. | o. r. | o. r. |
| 907678 | HELU-S-PK-CU-DIN 6-6 | 6,0 | 6,4 | 3,7 | 3,7 | 24,0 | 5 | 3,4 | 100 | o. r. | o. r. | o. r. |
| 907680 | HELU-S-PK-CU-DIN 10-5 | 10,0 | 5,3 | 4,4 | 10,0 | 27,0 | 6 | 3,5 | 100 | o. r. | o. r. | o. r. |
| 907681 | HELU-S-PK-CU-DIN 10-6 | 10,0 | 6,4 | 4,4 | 10,0 | 27,0 | 6 | 3,7 | 100 | o. r. | o. r. | o. r. |
| 907685 | HELU-S-PK-CU-DIN 16-6 | 16,0 | 6,4 | 5,5 | 13,0 | 36,0 | 8 | 12,7 | 100 | o. r. | o. r. | o. r. |
| 907686 | HELU-S-PK-CU-DIN 16-8 | 16,0 | 8,4 | 5,5 | 13,0 | 37,0 | 8 | 13,0 | 100 | o. r. | o. r. | o. r. |
| 907687 | HELU-S-PK-CU-DIN 16-10 | 16,0 | 10,5 | 5,5 | 16,5 | 38,0 | 8 | 13,2 | 100 | o. r. | o. r. | o. r. |
| 907689 | HELU-S-PK-CU-DIN 25-6 | 25,0 | 6,4 | 7,0 | 14,0 | 39,0 | 10 | 16,2 | 100 | o. r. | o. r. | o. r. |
| 907690 | HELU-S-PK-CU-DIN 25-8 | 25,0 | 8,4 | 7,0 | 17,0 | 39,0 | 10 | 17,3 | 100 | o. r. | o. r. | o. r. |
| 907691 | HELU-S-PK-CU-DIN 25-10 | 25,0 | 10,5 | 7,0 | 17,0 | 40,5 | 10 | 17,7 | 100 | o. r. | o. r. | o. r. |
| 907692 | HELU-S-PK-CU-DIN 25-12 | 25,0 | 13,0 | 7,0 | 18,0 | 40,5 | 10 | 17,2 | 100 | o. r. | o. r. | o. r. |
| 907695 | HELU-S-PK-CU-DIN 35-8 | 35,0 | 8,4 | 8,2 | 18,0 | 42,0 | 12 | 31,9 | 100 | o. r. | o. r. | o. r. |
| 907696 | HELU-S-PK-CU-DIN 35-10 | 35,0 | 10,5 | 8,2 | 20,0 | 42,5 | 12 | 31,7 | 100 | o. r. | o. r. | o. r. |
| 907697 | HELU-S-PK-CU-DIN 35-12 | 35,0 | 13,0 | 8,2 | 21,0 | 44,0 | 12 | 31,1 | 100 | o. r. | o. r. | o. r. |
| 907701 | HELU-S-PK-CU-DIN 50-8 | 50,0 | 8,4 | 9,8 | 20,0 | 52,0 | 14 | 50,0 | 100 | o. r. | o. r. | o. r. |
| 907702 | HELU-S-PK-CU-DIN 50-10 | 50,0 | 10,5 | 9,8 | 22,0 | 52,0 | 14 | 49,4 | 100 | o. r. | o. r. | o. r. |
| 907703 | HELU-S-PK-CU-DIN 50-12 | 50,0 | 13,0 | 9,8 | 23,0 | 52,0 | 14 | 49,1 | 100 | o. r. | o. r. | o. r. |
| 907705 | HELU-S-PK-CU-DIN 50-16 | 50,0 | 17,0 | 9,8 | 28,0 | 55,5 | 14 | 50,4 | 100 | o. r. | o. r. | o. r. |
| 907707 | HELU-S-PK-CU-DIN 70-8 | 70,0 | 8,4 | 11,3 | 24,0 | 56,0 | 16 | 65,4 | 50 | o. r. | o. r. | o. r. |
| 907708 | HELU-S-PK-CU-DIN 70-10 | 70,0 | 10,5 | 11,3 | 24,0 | 56,0 | 16 | 65,4 | 50 | o. r. | o. r. | o. r. |
| 907709 | HELU-S-PK-CU-DIN 70-12 | 70,0 | 13,0 | 11,3 | 24,0 | 56,5 | 16 | 65,7 | 50 | o. r. | o. r. | o. r. |
| 907711 | HELU-S-PK-CU-DIN 70-16 | 70,0 | 17,0 | 11,3 | 29,0 | 57,0 | 16 | 69,2 | 50 | o. r. | o. r. | o. r. |
| 906524 | HELU-S-PK-CU-DIN 95-10 | 95,0 | 10,5 | 13,5 | 28,0 | 65,5 | 18 | 95,5 | 50 | o. r. | o. r. | o. r. |
| 906525 | HELU-S-PK-CU-DIN 95-12 | 95,0 | 13,0 | 13,5 | 28,0 | 65,5 | 18 | 94,5 | 50 | o. r. | o. r. | o. r. |
| 907715 | HELU-S-PK-CU-DIN 95-16 | 95,0 | 17,0 | 13,5 | 30,0 | 65,5 | 18 | 94,4 | 50 | o. r. | o. r. | o. r. |
| 907716 | HELU-S-PK-CU-DIN 95-20 | 95,0 | 21,0 | 13,5 | 33,0 | 71,0 | 18 | 98,6 | 50 | o. r. | o. r. | o. r. |
| 906526 | HELU-S-PK-CU-DIN 120-10 | 120,0 | 10,5 | 15,5 | 31,0 | 70,0 | 20 | 114,0 | 50 | o. r. | o. r. | o. r. |
| 906527 | HELU-S-PK-CU-DIN 120-12 | 120,0 | 13,0 | 15,5 | 31,0 | 70,5 | 20 | 114,3 | 50 | o. r. | o. r. | o. r. |
| 907719 | HELU-S-PK-CU-DIN 120-16 | 120,0 | 17,0 | 15,5 | 31,5 | 70,0 | 20 | 113,6 | 50 | o. r. | o. r. | o. r. |
| 907720 | HELU-S-PK-CU-DIN 120-20 | 120,0 | 21,0 | 15,5 | 36,0 | 72,0 | 20 | 115,1 | 50 | o. r. | o. r. | o. r. |
| 907722 | HELU-S-PK-CU-DIN 150-10 | 150,0 | 10,5 | 17,0 | 34,0 | 79,0 | 22 | 164,6 | 25 | o. r. | o. r. | o. r. |
| 906528 | HELU-S-PK-CU-DIN 150-12 | 150,0 | 13,0 | 17,0 | 34,0 | 78,5 | 22 | 165,3 | 25 | o. r. | o. r. | o. r. |
| 906529 | HELU-S-PK-CU-DIN 150-16 | 150,0 | 17,0 | 17,0 | 34,0 | 78,0 | 22 | 163,5 | 25 | o. r. | o. r. | o. r. |
| 907724 | HELU-S-PK-CU-DIN 150-20 | 150,0 | 21,0 | 17,0 | 38,0 | 78,0 | 22 | 163,4 | 25 | o. r. | o. r. | o. r. |
| 907726 | HELU-S-PK-CU-DIN 185-10 | 185,0 | 10,5 | 19,0 | 37,0 | 83,0 | 25 | 185,0 | 25 | o. r. | o. r. | o. r. |
| 906530 | HELU-S-PK-CU-DIN 185-12 | 185,0 | 13,0 | 19,0 | 37,0 | 82,5 | 25 | 189,5 | 25 | o. r. | o. r. | o. r. |
| 906531 | HELU-S-PK-CU-DIN 185-16 | 185,0 | 17,0 | 19,0 | 37,0 | 82,0 | 25 | 194,1 | 25 | o. r. | o. r. | o. r. |
| 907728 | HELU-S-PK-CU-DIN 185-20 | 185,0 | 21,0 | 19,0 | 40,0 | 83,0 | 25 | 190,1 | 25 | o. r. | o. r. | o. r. |
| 906532 | HELU-S-PK-CU-DIN 240-12 | 240,0 | 13,0 | 21,5 | 42,5 | 92,0 | 28 | 266,5 | 20 | o. r. | o. r. | o. r. |
| 906533 | HELU-S-PK-CU-DIN 240-16 | 240,0 | 17,0 | 21,5 | 42,5 | 92,0 | 28 | 274,5 | 20 | o. r. | o. r. | o. r. |

Continuation▶

HELU-S-PK-CU-DIN Copper tubular compression lug - straight

| Part no. | Type | Cross-section mm ² | a mm | d mm | b mm | l mm | Code type | Weight kg / 1000 items | Unit | Net EUR/100 items at a purchase of | | |
|----------|--------------------------|----------------------------------|---------|---------|---------|---------|--------------|------------------------------|------|------------------------------------|-----------|------------|
| | | | | | | | | | | up to 100 | 101 - 500 | 501 - 1000 |
| 907731 | HELU-S-PK-CU-DIN 240-20 | 240,0 | 21,0 | 21,5 | 45,0 | 92,0 | 28 | 276,7 | 20 | o. r. | o. r. | o. r. |
| 906534 | HELU-S-PK-CU-DIN 300-16 | 300,0 | 17,0 | 24,5 | 48,5 | 100,0 | 32 | 341,6 | 10 | o. r. | o. r. | o. r. |
| 906535 | HELU-S-PK-CU-DIN 300-20 | 300,0 | 21,0 | 24,5 | 48,5 | 100,0 | 32 | 344,6 | 10 | o. r. | o. r. | o. r. |
| 906536 | HELU-S-PK-CU-DIN 400-16 | 400,0 | 17,0 | 27,5 | 55,0 | 117,0 | 38 | 717,5 | 5 | o. r. | o. r. | o. r. |
| 906537 | HELU-S-PK-CU-DIN 400-20 | 400,0 | 21,0 | 27,5 | 55,0 | 117,0 | 38 | 706,4 | 5 | o. r. | o. r. | o. r. |
| 906538 | HELU-S-PK-CU-DIN 500-20 | 500,0 | 21,0 | 31,0 | 60,0 | 130,0 | 42 | 876,6 | 5 | o. r. | o. r. | o. r. |
| 907744 | HELU-S-PK-CU-DIN 625-20 | 625,0 | 21,0 | 34,5 | 63,0 | 135,0 | 44 | 820,5 | 5 | o. r. | o. r. | o. r. |
| 907747 | HELU-S-PK-CU-DIN 800-20 | 800,0 | 21,0 | 40,0 | 75,0 | 165,0 | 100 | 1455,5 | 2 | o. r. | o. r. | o. r. |
| 907749 | HELU-S-PK-CU-DIN 1000-20 | 1000,0 | 21,0 | 44,0 | 83,0 | 167,0 | 58 | 1890,0 | 2 | o. r. | o. r. | o. r. |

Dimensions and specifications may be changed without prior notice.

o. r. = on request

HELU-S-PK-AL-DIN Aluminium compression cable lug - straight



Compression cable lug HELU-S-PK-AL-DIN

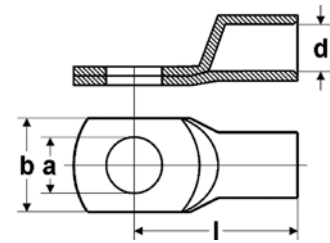
Uninsulated, straight tubular cable lug in eye type design made of aluminium. High quality version for reliable crimping. Designed for conductor type RM acc. to DIN 48201 and circular reshaped conductors.

Material

AL 99,5
Surface: bare

Note

- Code type indicates the required hexagonal crimping insert.
- Sleeves are prefilled with contact grease and sealed with plastic plug



Dimensions

- a Diameter of the bore
- d Inner diameter of the cable inclusion
- b Flange width
- l Length to middle of the bore

| Part no. | Type | Cross-section RM/SM - SE mm ² | a mm | d mm | b mm | l mm | Code type | Weight kg / 1000 items | Unit | Net EUR/100 items at a purchase of | | |
|----------|-------------------------|--|---------|---------|---------|---------|--------------|------------------------------|------|------------------------------------|-----------|------------|
| | | | | | | | | | | up to 100 | 101 - 500 | 501 - 1000 |
| 907865 | HELU-S-PK-AL-DIN 16-8 | 16,0 - 25,0 | 8,4 | 5,6 | 16,0 | 52,0 | 12 | 9,6 | 50 | o. r. | o. r. | o. r. |
| 907866 | HELU-S-PK-AL-DIN 16-10 | 16,0 - 25,0 | 10,5 | 5,6 | 18,0 | 52,0 | 12 | 9,7 | 50 | o. r. | o. r. | o. r. |
| 907867 | HELU-S-PK-AL-DIN 25-8 | 25,0 - 35,0 | 8,4 | 6,8 | 16,0 | 60,0 | 12 | 14,8 | 50 | o. r. | o. r. | o. r. |
| 907868 | HELU-S-PK-AL-DIN 25-10 | 25,0 - 35,0 | 10,5 | 6,8 | 18,0 | 60,0 | 12 | 15,3 | 50 | o. r. | o. r. | o. r. |
| 907869 | HELU-S-PK-AL-DIN 35-8 | 35,0 - 50,0 | 8,4 | 8,0 | 20,0 | 67,0 | 14 | 24,5 | 50 | o. r. | o. r. | o. r. |
| 907870 | HELU-S-PK-AL-DIN 35-10 | 35,0 - 50,0 | 10,5 | 8,0 | 20,0 | 67,0 | 14 | 24,5 | 50 | o. r. | o. r. | o. r. |
| 907871 | HELU-S-PK-AL-DIN 35-12 | 35,0 - 50,0 | 13,0 | 8,0 | 20,0 | 67,0 | 14 | 23,5 | 50 | o. r. | o. r. | o. r. |
| 907872 | HELU-S-PK-AL-DIN 50-8 | 50,0 - 70,0 | 8,4 | 10,0 | 23,0 | 74,0 | 16 | 32,9 | 25 | o. r. | o. r. | o. r. |
| 907873 | HELU-S-PK-AL-DIN 50-10 | 50,0 - 70,0 | 10,5 | 10,0 | 23,0 | 74,0 | 16 | 28,8 | 25 | o. r. | o. r. | o. r. |
| 907874 | HELU-S-PK-AL-DIN 50-12 | 50,0 - 70,0 | 13,0 | 10,0 | 23,0 | 74,0 | 16 | 33,8 | 25 | o. r. | o. r. | o. r. |
| 907875 | HELU-S-PK-AL-DIN 70-10 | 70,0 - 95,0 | 10,5 | 11,5 | 28,0 | 84,0 | 18 | 47,7 | 25 | o. r. | o. r. | o. r. |
| 907876 | HELU-S-PK-AL-DIN 70-12 | 70,0 - 95,0 | 13,0 | 11,5 | 28,0 | 87,0 | 18 | 47,3 | 25 | o. r. | o. r. | o. r. |
| 907877 | HELU-S-PK-AL-DIN 95-10 | 95,0 - 120,0 | 10,5 | 13,2 | 32,0 | 90,0 | 22 | 70,1 | 10 | o. r. | o. r. | o. r. |
| 907878 | HELU-S-PK-AL-DIN 95-12 | 95,0 - 120,0 | 13,0 | 13,2 | 32,0 | 90,0 | 22 | 78,2 | 10 | o. r. | o. r. | o. r. |
| 907879 | HELU-S-PK-AL-DIN 95-16 | 95,0 - 120,0 | 17,0 | 13,2 | 32,0 | 90,0 | 22 | 76,2 | 10 | o. r. | o. r. | o. r. |
| 907880 | HELU-S-PK-AL-DIN 120-10 | 120,0 - 150,0 | 10,5 | 14,7 | 32,0 | 98,0 | 22 | 83,8 | 10 | o. r. | o. r. | o. r. |
| 907881 | HELU-S-PK-AL-DIN 120-12 | 120,0 - 150,0 | 13,0 | 14,7 | 32,0 | 98,0 | 22 | 87,9 | 10 | o. r. | o. r. | o. r. |
| 907882 | HELU-S-PK-AL-DIN 120-16 | 120,0 - 150,0 | 17,0 | 14,7 | 32,0 | 98,0 | 22 | 86,4 | 10 | o. r. | o. r. | o. r. |
| 906459 | HELU-S-PK-AL-DIN 150-10 | 150,0 - 185,0 | 10,5 | 16,3 | 35,0 | 104,0 | 25 | 99,8 | 10 | o. r. | o. r. | o. r. |
| 906436 | HELU-S-PK-AL-DIN 150-12 | 150,0 - 185,0 | 13,0 | 16,3 | 35,0 | 104,0 | 25 | 102,3 | 10 | o. r. | o. r. | o. r. |
| 906461 | HELU-S-PK-AL-DIN 150-16 | 150,0 - 185,0 | 13,0 | 16,3 | 35,0 | 104,0 | 25 | 100,8 | 10 | o. r. | o. r. | o. r. |
| 906462 | HELU-S-PK-AL-DIN 150-20 | 150,0 - 185,0 | 21,0 | 16,3 | 35,0 | 104,0 | 25 | 100,2 | 10 | o. r. | o. r. | o. r. |
| 907883 | HELU-S-PK-AL-DIN 185-10 | 185,0 - 240,0 | 10,5 | 18,5 | 40,0 | 109,0 | 28 | 133,9 | 10 | o. r. | o. r. | o. r. |
| 906463 | HELU-S-PK-AL-DIN 185-12 | 185,0 - 240,0 | 13,0 | 18,5 | 40,0 | 109,0 | 28 | 133,9 | 10 | o. r. | o. r. | o. r. |
| 906464 | HELU-S-PK-AL-DIN 185-16 | 185,0 - 240,0 | 17,0 | 18,5 | 40,0 | 109,0 | 28 | 137,5 | 10 | o. r. | o. r. | o. r. |
| 906465 | HELU-S-PK-AL-DIN 185-20 | 185,0 - 240,0 | 21,0 | 18,5 | 40,0 | 109,0 | 28 | 137,5 | 10 | o. r. | o. r. | o. r. |
| 907884 | HELU-S-PK-AL-DIN 240-10 | 240,0 - 300,0 | 10,5 | 21,0 | 46,0 | 119,0 | 32 | 182,8 | 10 | o. r. | o. r. | o. r. |
| 906466 | HELU-S-PK-AL-DIN 240-12 | 240,0 - 300,0 | 13,0 | 21,0 | 46,0 | 119,0 | 32 | 179,4 | 10 | o. r. | o. r. | o. r. |
| 906467 | HELU-S-PK-AL-DIN 240-16 | 240,0 - 300,0 | 17,0 | 21,0 | 46,0 | 119,0 | 32 | 176,2 | 10 | o. r. | o. r. | o. r. |
| 906468 | HELU-S-PK-AL-DIN 240-20 | 240,0 - 300,0 | 21,0 | 21,0 | 46,0 | 119,0 | 32 | 179,0 | 10 | o. r. | o. r. | o. r. |
| 906469 | HELU-S-PK-AL-DIN 300-12 | 300,0 | 13,0 | 23,3 | 50,0 | 125,0 | 38 | 205,4 | 5 | o. r. | o. r. | o. r. |
| 906470 | HELU-S-PK-AL-DIN 300-16 | 300,0 | 17,0 | 23,3 | 50,0 | 125,0 | 38 | 201,4 | 5 | o. r. | o. r. | o. r. |
| 906471 | HELU-S-PK-AL-DIN 300-20 | 300,0 | 21,0 | 23,3 | 50,0 | 125,0 | 38 | 194,3 | 5 | o. r. | o. r. | o. r. |
| 906472 | HELU-S-PK-AL-DIN 400-12 | 400,0 | 13,0 | 26,0 | 55,0 | 120,0 | 38 | 283,0 | 5 | o. r. | o. r. | o. r. |
| 906473 | HELU-S-PK-AL-DIN 400-16 | 400,0 | 17,0 | 26,0 | 55,0 | 120,0 | 38 | 273,3 | 5 | o. r. | o. r. | o. r. |
| 906474 | HELU-S-PK-AL-DIN 400-20 | 400,0 | 21,0 | 26,0 | 55,0 | 120,0 | 38 | 240,0 | 5 | o. r. | o. r. | o. r. |
| 906475 | HELU-S-PK-AL-DIN 500-12 | 500,0 | 13,0 | 29,0 | 63,0 | 140,0 | 44 | 380,0 | 5 | o. r. | o. r. | o. r. |
| 906476 | HELU-S-PK-AL-DIN 500-16 | 500,0 | 17,0 | 29,0 | 63,0 | 140,0 | 44 | 378,0 | 5 | o. r. | o. r. | o. r. |
| 906477 | HELU-S-PK-AL-DIN 500-20 | 500,0 | 21,0 | 29,0 | 63,0 | 140,0 | 44 | 373,5 | 5 | o. r. | o. r. | o. r. |

Dimensions and specifications may be changed without prior notice.

o. r. = on request

HELU-S-PK-AL/CU Aluminium/copper compression cable lug - straight



Compression cable lug HELU-S-PK-AL/CU

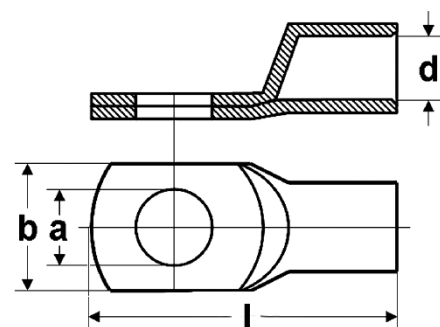
Non-insulated, straight compression lug in eye type design made of aluminium. High quality version for reliable crimping. Designed for conductor type RM and circular reshaped conductors.

Material

Socket: Al 99,5 and Cu acc. to DIN EN 13601
Surface: bare

Note

- Code type indicates the required hexagonal crimping insert.
- Al-sleeves are prefilled with contact grease and sealed with plastic plugs



Dimensions

- a Diameter of the boring
- d Inner diameter of the cable inclusion
- b Flange width
- l Length

| Part no. | Cross-section RM/SM - SE mm ² | Boring M | a mm | d mm | b mm | l mm | Code type | Weight kg / 1000 items | Unit | Net EUR/100 items at a purchase of | | |
|----------|--|-------------|---------|---------|---------|---------|--------------|------------------------------|------|------------------------------------|------------|-------------|
| | | | | | | | | | | up to 500 | 501 - 1000 | 1001 - 5000 |
| 907568 | 10 - - | 8 | 8,4 | 5,0 | 20,0 | 50,0 | 10 | 26,5 | 25 | o. r. | o. r. | o. r. |
| 907569 | 16 - 25 | 8 | 8,4 | 5,6 | 20,0 | 60,0 | 12 | 35,4 | 25 | o. r. | o. r. | o. r. |
| 907570 | 16 - 25 | 10 | 10,5 | 5,6 | 20,0 | 60,0 | 12 | 34,2 | 25 | o. r. | o. r. | o. r. |
| 907571 | 25 - 35 | 8 | 8,4 | 6,8 | 20,0 | 65,0 | 12 | 35,7 | 25 | o. r. | o. r. | o. r. |
| 907572 | 25 - 35 | 10 | 10,5 | 6,8 | 20,0 | 65,0 | 12 | 34,4 | 25 | o. r. | o. r. | o. r. |
| 907573 | 25 - 35 | 12 | 13,0 | 6,8 | 26,0 | 67,0 | 12 | 44,5 | 25 | o. r. | o. r. | o. r. |
| 907574 | 35 - 50 | 8 | 8,4 | 8,0 | 20,0 | 75,0 | 14 | 45,5 | 25 | o. r. | o. r. | o. r. |
| 907575 | 35 - 50 | 10 | 10,5 | 8,0 | 20,0 | 75,0 | 14 | 44,2 | 25 | o. r. | o. r. | o. r. |
| 907576 | 35 - 50 | 12 | 13,0 | 8,0 | 26,0 | 75,0 | 14 | 51,5 | 25 | o. r. | o. r. | o. r. |
| 907577 | 50 - 70 | 8 | 8,4 | 9,8 | 20,0 | 75,0 | 16 | 48,7 | 25 | o. r. | o. r. | o. r. |
| 907578 | 50 - 70 | 10 | 10,5 | 9,8 | 20,0 | 75,0 | 16 | 47,2 | 25 | o. r. | o. r. | o. r. |
| 907579 | 50 - 70 | 12 | 13,0 | 9,8 | 26,0 | 75,0 | 16 | 59,9 | 25 | o. r. | o. r. | o. r. |
| 907580 | 70 - 95 | 8 | 8,4 | 11,2 | 26,0 | 85,0 | 18 | 61,9 | 10 | o. r. | o. r. | o. r. |
| 907581 | 70 - 95 | 0 | 10,5 | 11,2 | 26,0 | 10,0 | 18 | 73,7 | 10 | o. r. | o. r. | o. r. |
| 907582 | 70 - 95 | 0 | 13,0 | 11,2 | 26,0 | 85,0 | 18 | 73,7 | 10 | o. r. | o. r. | o. r. |
| 907583 | 70 - 95 | 16 | 17,0 | 11,2 | 30,0 | 88,0 | 18 | 81,0 | 10 | o. r. | o. r. | o. r. |
| 907584 | 95 - 120 | 8 | 8,4 | 13,2 | 26,0 | 86,0 | 22 | 102,9 | 10 | o. r. | o. r. | o. r. |
| 907585 | 95 - 120 | 10 | 10,5 | 13,2 | 26,0 | 86,0 | 22 | 105,9 | 10 | o. r. | o. r. | o. r. |
| 907586 | 95 - 120 | 12 | 13,0 | 13,2 | 26,0 | 86,0 | 22 | 103,4 | 10 | o. r. | o. r. | o. r. |
| 907587 | 95 - 120 | 16 | 17,0 | 13,2 | 30,0 | 88,0 | 22 | 109,9 | 10 | o. r. | o. r. | o. r. |
| 907588 | 120 - 150 | 8 | 8,4 | 14,7 | 26,0 | 88,0 | 22 | 106,8 | 10 | o. r. | o. r. | o. r. |
| 907589 | 120 - 150 | 10 | 10,5 | 14,7 | 26,0 | 88,0 | 22 | 106,8 | 10 | o. r. | o. r. | o. r. |
| 907590 | 120 - 150 | 12 | 13,0 | 14,7 | 26,0 | 88,0 | 22 | 104,5 | 10 | o. r. | o. r. | o. r. |
| 907591 | 120 - 150 | 16 | 17,0 | 14,7 | 30,0 | 90,0 | 22 | 114,5 | 10 | o. r. | o. r. | o. r. |
| 907592 | 150 - 185 | 8 | 8,4 | 16,3 | 30,0 | 100,0 | 25 | 138,8 | 5 | o. r. | o. r. | o. r. |
| 906478 | 150 - 185 | 10 | 10,5 | 16,3 | 30,0 | 100,0 | 25 | 138,0 | 5 | o. r. | o. r. | o. r. |
| 906172 | 150 - 185 | 12 | 13,0 | 16,3 | 30,0 | 100,0 | 25 | 135,7 | 5 | o. r. | o. r. | o. r. |
| 906173 | 150 - 185 | 16 | 17,0 | 16,3 | 30,0 | 100,0 | 25 | 128,8 | 5 | o. r. | o. r. | o. r. |
| 907593 | 185 - 240 | 8 | 8,4 | 18,3 | 30,0 | 102,0 | 28 | 183,7 | 5 | o. r. | o. r. | o. r. |
| 906479 | 185 - 240 | 10 | 10,5 | 18,3 | 30,0 | 102,0 | 28 | 176,1 | 5 | o. r. | o. r. | o. r. |
| 906480 | 185 - 240 | 12 | 13,0 | 18,3 | 30,0 | 102,0 | 28 | 173,1 | 5 | o. r. | o. r. | o. r. |
| 906481 | 185 - 240 | 16 | 17,0 | 18,3 | 36,0 | 105,0 | 28 | 196,8 | 5 | o. r. | o. r. | o. r. |
| 906482 | 185 - 240 | 8 | 21,0 | 18,3 | 36,0 | 105,0 | 28 | 189,7 | 5 | o. r. | o. r. | o. r. |
| 906483 | 240 - 300 | 10 | 10,5 | 21,0 | 30,0 | 112,0 | 32 | 204,1 | 5 | o. r. | o. r. | o. r. |
| 906185 | 240 - 300 | 12 | 13,0 | 21,0 | 30,0 | 112,0 | 32 | 204,1 | 5 | o. r. | o. r. | o. r. |
| 906484 | 240 - 300 | 16 | 17,0 | 21,0 | 36,0 | 115,0 | 32 | 225,8 | 5 | o. r. | o. r. | o. r. |
| 906485 | 240 - 300 | 20 | 21,0 | 21,0 | 36,0 | 115,0 | 32 | 218,5 | 5 | o. r. | o. r. | o. r. |

HELU-S-PK-AL/CU Copper compression cable lug – straight

| Part no. | Cross-section RM/SM - SE mm ² | Boring M | a mm | d mm | b mm | l mm | Code type | Weight kg / 1000 items | Unit | Net EUR/100 items at a purchase of | | |
|----------|--|-------------|---------|---------|---------|---------|--------------|------------------------------|------|------------------------------------|------------|-------------|
| | | | | | | | | | | up to 500 | 501 - 1000 | 1001 - 5000 |
| 906486 | 300 - - | 10 | 10,5 | 23,3 | 30,0 | 115,0 | 34 | 225,0 | 5 | o. r. | o. r. | o. r. |
| 906487 | 300 - - | 12 | 13,0 | 23,3 | 30,0 | 116,0 | 34 | 218,4 | 5 | o. r. | o. r. | o. r. |
| 906488 | 300 - - | 16 | 17,0 | 23,3 | 36,0 | 116,0 | 34 | 226,4 | 5 | o. r. | o. r. | o. r. |
| 906489 | 300 - - | 20 | 21,0 | 23,3 | 36,0 | 116,0 | 34 | 232,2 | 5 | o. r. | o. r. | o. r. |
| 906490 | 400 - - | 10 | 10,5 | 26,0 | 36,0 | 125,0 | 38 | 225,0 | 5 | o. r. | o. r. | o. r. |
| 906212 | 400 - - | 12 | 13,0 | 26,0 | 36,0 | 125,0 | 38 | 328,7 | 5 | o. r. | o. r. | o. r. |
| 906174 | 400 - - | 16 | 17,0 | 26,0 | 36,0 | 125,0 | 38 | 332,7 | 5 | o. r. | o. r. | o. r. |
| 906175 | 400 - - | 20 | 21,0 | 26,0 | 36,0 | 125,0 | 38 | 352,6 | 5 | o. r. | o. r. | o. r. |
| 906491 | 500 - - | 10 | 10,5 | 29,0 | 44,0 | 140,0 | 44 | 341,5 | 1 | o. r. | o. r. | o. r. |
| 906492 | 500 - - | 12 | 13,0 | 29,0 | 44,0 | 140,0 | 44 | 437,1 | 1 | o. r. | o. r. | o. r. |
| 906493 | 500 - - | 16 | 17,0 | 29,0 | 44,0 | 140,0 | 44 | 433,3 | 1 | o. r. | o. r. | o. r. |
| 906494 | 500 - - | 20 | 21,0 | 29,0 | 44,0 | 140,0 | 44 | 428,3 | 1 | o. r. | o. r. | o. r. |
| 907594 | 625 - - | 12 | 13,0 | 35,0 | 50,0 | 177,0 | 52 | 420,8 | 1 | o. r. | o. r. | o. r. |
| 907595 | 625 - - | 16 | 17,0 | 35,0 | 50,0 | 177,0 | 52 | 630,1 | 1 | o. r. | o. r. | o. r. |
| 907596 | 625 - - | 20 | 21,0 | 35,0 | 50,0 | 177,0 | 52 | 770,0 | 1 | o. r. | o. r. | o. r. |
| | | | | | | | | 763,0 | 1 | o. r. | o. r. | o. r. |

Dimensions and specifications may be changed without prior notice.

o. r. = on request

HELU-S-SV-CU Copper tubular butt connectors



Compression joint

HELU-S-SV-CU

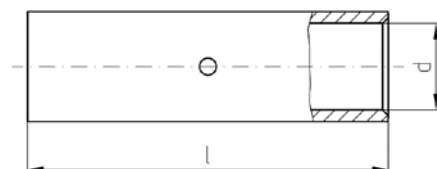
Clamping connection sleeves for unstrained clamping.

Type: With wirestop

Material

Socket: Cu according to DIN EN 13600

Surface: tin plated



Dimensions

d Inner diameter of the cable inclusion
l Length

| Part no. | Type | Cross-section mm ² | d mm | l mm | Code type | Weight kg / 1000 items | Unit | Net EUR/ 100 items at a purchase of | | |
|----------|-----------------------|----------------------------------|---------|---------|--------------|------------------------------|------|-------------------------------------|-----------|------------|
| | | | | | | | | up to 100 | 101 - 500 | 501 - 1000 |
| 907811 | HELU-S-SV-CU 0,5-0,75 | 0,5 | 1,4 | 15,0 | - | 0,8 | 100 | o. r. | o. r. | o. r. |
| 907812 | HELU-S-SV-CU 1-1,5 | 1,0 | 1,9 | 15,0 | - | 1,2 | 100 | o. r. | o. r. | o. r. |
| 907813 | HELU-S-SV-CU 2,5 | 2,5 | 2,4 | 16,0 | - | 1,5 | 100 | o. r. | o. r. | o. r. |
| 907814 | HELU-S-SV-CU 4 | 4,0 | 3,0 | 19,0 | - | 2,1 | 100 | o. r. | o. r. | o. r. |
| 907815 | HELU-S-SV-CU 6 | 6,0 | 3,5 | 25,0 | - | 5,1 | 100 | o. r. | o. r. | o. r. |
| 907816 | HELU-S-SV-CU 10 | 10,0 | 4,5 | 30,0 | - | 6,0 | 50 | o. r. | o. r. | o. r. |
| 907817 | HELU-S-SV-CU 16 | 16,0 | 5,5 | 35,0 | - | 10,0 | 50 | o. r. | o. r. | o. r. |
| 907818 | HELU-S-SV-CU 25 | 25,0 | 7,0 | 40,0 | - | 14,1 | 50 | o. r. | o. r. | o. r. |
| 907819 | HELU-S-SV-CU 35 | 35,0 | 8,5 | 45,0 | - | 21,6 | 50 | o. r. | o. r. | o. r. |
| 907820 | HELU-S-SV-CU 50 | 50,0 | 10,0 | 50,0 | - | 33,2 | 50 | o. r. | o. r. | o. r. |
| 907821 | HELU-S-SV-CU 70 | 70,0 | 12,0 | 55,0 | - | 49,1 | 50 | o. r. | o. r. | o. r. |
| 907822 | HELU-S-SV-CU 95 | 95,0 | 13,5 | 60,0 | - | 60,9 | 50 | o. r. | o. r. | o. r. |
| 907823 | HELU-S-SV-CU 120 | 120,0 | 15,0 | 65,0 | - | 78,8 | 25 | o. r. | o. r. | o. r. |
| 907824 | HELU-S-SV-CU 150 | 150,0 | 16,8 | 70,0 | - | 86,8 | 25 | o. r. | o. r. | o. r. |
| 907825 | HELU-S-SV-CU 185 | 185,0 | 19,0 | 75,0 | - | 116,3 | 25 | o. r. | o. r. | o. r. |
| 907826 | HELU-S-SV-CU 240 | 240,0 | 21,0 | 85,0 | - | 142,2 | 25 | o. r. | o. r. | o. r. |
| 907827 | HELU-S-SV-CU 300 | 300,0 | 24,0 | 100,0 | - | 224,0 | 10 | o. r. | o. r. | o. r. |
| 907828 | HELU-S-SV-CU 400 | 400,0 | 27,5 | 100,0 | - | 261,7 | 10 | o. r. | o. r. | o. r. |
| 907829 | HELU-S-SV-CU 500 | 500,0 | 31,0 | 140,0 | - | 473,0 | 5 | o. r. | o. r. | o. r. |
| 907830 | HELU-S-SV-CU 630 | 630,0 | 34,0 | 160,0 | - | 617,5 | 5 | o. r. | o. r. | o. r. |

Dimensions and specifications may be changed without prior notice.

o. r. = on request

HELU-S-PV-CU-DIN Copper compressions joint



Compression joint HELU-S-PV-CU-DIN

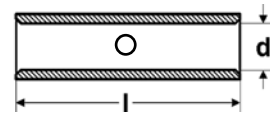
Clamping connection sleeves for unstrained clamping of conductors built to DIN 46267.

Material

Socket: copper
Surface: tinned

Note

- Code type indicates the required hexagonal clamping insert



| Part no. | Type | Cross-section mm ² | d mm | l mm | Code type | Weight kg / 1000 items | Unit | Net EUR/100 items at a purchase of | | |
|----------|----------------------|----------------------------------|---------|---------|--------------|------------------------------|------|------------------------------------|-----------|------------|
| | | | | | | | | up to 100 | 101 - 500 | 501 - 1000 |
| 93263 | HELU-S-PV-CU-DIN 6 | 6,0 | 3,8 | 30,0 | 5,0 | 3,4 | 50 | o. r. | o. r. | o. r. |
| 93264 | HELU-S-PV-CU-DIN 10 | 10,0 | 4,5 | 30,0 | 6,0 | 3,4 | 50 | o. r. | o. r. | o. r. |
| 93265 | HELU-S-PV-CU-DIN 16 | 16,0 | 5,5 | 50,0 | 8,0 | 14,9 | 50 | o. r. | o. r. | o. r. |
| 93266 | HELU-S-PV-CU-DIN 25 | 25,0 | 7,0 | 50,0 | 10,0 | 18,0 | 50 | o. r. | o. r. | o. r. |
| 93267 | HELU-S-PV-CU-DIN 35 | 35,0 | 8,2 | 50,0 | 12,0 | 31,5 | 50 | o. r. | o. r. | o. r. |
| 93268 | HELU-S-PV-CU-DIN 50 | 50,0 | 10,0 | 56,0 | 14,0 | 43,7 | 50 | o. r. | o. r. | o. r. |
| 93269 | HELU-S-PV-CU-DIN 70 | 70,0 | 11,5 | 56,0 | 16,0 | 55,4 | 25 | o. r. | o. r. | o. r. |
| 93270 | HELU-S-PV-CU-DIN 95 | 95,0 | 13,5 | 70,0 | 18,0 | 88,4 | 25 | o. r. | o. r. | o. r. |
| 93271 | HELU-S-PV-CU-DIN 120 | 120,0 | 15,5 | 70,0 | 20,0 | 99,2 | 25 | o. r. | o. r. | o. r. |
| 93272 | HELU-S-PV-CU-DIN 150 | 150,0 | 17,0 | 80,0 | 22,0 | 148,6 | 10 | o. r. | o. r. | o. r. |
| 93273 | HELU-S-PV-CU-DIN 185 | 185,0 | 19,0 | 85,0 | 25,0 | 173,5 | 10 | o. r. | o. r. | o. r. |
| 93274 | HELU-S-PV-CU-DIN 240 | 240,0 | 21,5 | 90,0 | 28,0 | 240,3 | 10 | o. r. | o. r. | o. r. |
| 93275 | HELU-S-PV-CU-DIN 300 | 300,0 | 24,5 | 100,0 | 32,0 | 298,6 | 10 | o. r. | o. r. | o. r. |

Dimensions and specifications may be changed without prior notice.

o. r. = on request

HELU-S-PV-AL-DIN Aluminium press connector



Press connector HELU-S-PV-AL-DIN

Press connector for strain-relieved connections of conductors designed acc. to DIN 46267 part 2.

Material

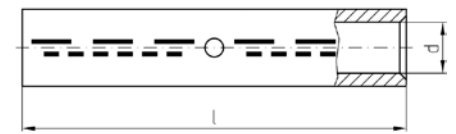
Socket: Al 99,5
Surface: bare

Note

- Code type indicates the required hexagonal crimping insert.
- Part No. 907835 is not standardized.
- Sleeves are prefilled with contact grease and sealed with plastic plug.

Technical data

Temperature range: up to +120°C



Dimensions

d Inner diameter of the cable inclusion
l Length

| Part no. | Cross-section RM/SM - SE mm ² | d mm | l mm | Code type | Weight kg / 1000 items | Unit | Net EUR/ 100 items at a purchase of | | |
|----------|--|---------|---------|--------------|------------------------------|------|-------------------------------------|-----------|------------|
| | | | | | | | up to 100 | 101 - 500 | 501 - 1000 |
| 907835 | 16 - 25 | 5,6 | 55,0 | 12 | 13,4 | 50 | o. r. | o. r. | o. r. |
| 906511 | 25 - 35 | 6,8 | 70,0 | 12 | 15,4 | 50 | o. r. | o. r. | o. r. |
| 906512 | 35 - 50 | 8,0 | 85,0 | 14 | 28,5 | 50 | o. r. | o. r. | o. r. |
| 906513 | 50 - 70 | 10,0 | 85,0 | 16 | 34,0 | 25 | o. r. | o. r. | o. r. |
| 906514 | 70 - 95 | 11,5 | 105,0 | 18 | 55,9 | 25 | o. r. | o. r. | o. r. |
| 906515 | 95 - 120 | 13,2 | 105,0 | 22 | 82,1 | 10 | o. r. | o. r. | o. r. |
| 906516 | 120 - 150 | 14,7 | 105,0 | 22 | 86,4 | 10 | o. r. | o. r. | o. r. |
| 906406 | 150 - 185 | 16,3 | 125,0 | 25 | 111,3 | 10 | o. r. | o. r. | o. r. |
| 906517 | 185 - 240 | 18,5 | 125,0 | 28 | 143,5 | 10 | o. r. | o. r. | o. r. |
| 906518 | 240 - 300 | 21,0 | 145,0 | 32 | 191,7 | 10 | o. r. | o. r. | o. r. |
| 906519 | 300 - - | 23,3 | 145,0 | 34 | 227,1 | 10 | o. r. | o. r. | o. r. |
| 906520 | 400 - - | 26,0 | 210,0 | 38 | 359,0 | 5 | o. r. | o. r. | o. r. |
| 906521 | 500 - - | 29,0 | 210,0 | 44 | 455,0 | 5 | o. r. | o. r. | o. r. |

Dimensions and specifications may be changed without prior notice.

o. r. = on request

HELU-S-PV-AL/CU Aluminium / Copper press connector



Press Connector HELU-S-PV-AL/CU

Press connector for aluminium conductors, strain relieved

Material

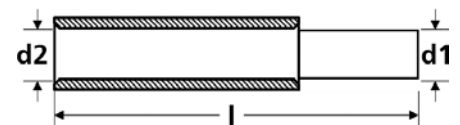
Socket: Al 99,5 and Cu acc. to DIN EN 13601
Surface: bare

Note

Al-sleeves are prefilled with contact grease and sealed with plastic plug.

Technical data

Temperature range: up to +120°C



Dimensions

- d1 Inner diameter of the cable inclusion, copper side
- d2 Inner diameter of the cable inclusion, aluminium side
- l Length

| Part no. | Cross-section AL RM/SM - SE mm ² | Cross-section CU SE mm ² | Code type AL / CU | d1 CU mm | d2 AL mm | l mm | Weight kg / 1000 items | Unit | Net EUR/ 100 items at a purchase of | | |
|----------|--|--|-------------------------|----------------|----------------|---------|------------------------------|------|-------------------------------------|-----------|------------|
| | | | | | | | | | up to 100 | 101 - 500 | 501 - 1000 |
| 907836 | 16 - 25 | 6 | 12 / 5 | 3,7 | 5,6 | 45,0 | 9,2 | 25 | o. r. | o. r. | o. r. |
| 907837 | 16 - 25 | 10 | 12 / 6 | 4,4 | 5,6 | 45,0 | 9,4 | 25 | o. r. | o. r. | o. r. |
| 907838 | 16 - 25 | 16 | 12 / 8 | 5,5 | 5,6 | 56,0 | 15,8 | 25 | o. r. | o. r. | o. r. |
| 907839 | 25 - 35 | 10 | 12 / 6 | 4,4 | 6,8 | 51,0 | 9,9 | 25 | o. r. | o. r. | o. r. |
| 907840 | 25 - 35 | 16 | 12 / 8 | 5,5 | 6,8 | 61,0 | 16,1 | 25 | o. r. | o. r. | o. r. |
| 907841 | 25 - 35 | 25 | 12 / 10 | 7,0 | 6,8 | 62,0 | 19,2 | 25 | o. r. | o. r. | o. r. |
| 907842 | 35 - 50 | 16 | 14 / 8 | 5,5 | 8,0 | 71,0 | 21,2 | 25 | o. r. | o. r. | o. r. |
| 907843 | 35 - 50 | 25 | 14 / 10 | 7,0 | 8,0 | 71,0 | 24,1 | 25 | o. r. | o. r. | o. r. |
| 907844 | 35 - 50 | 35 | 14 / 12 | 8,2 | 8,0 | 70,0 | 29,9 | 25 | o. r. | o. r. | o. r. |
| 907845 | 50 - 70 | 25 | 16 / 10 | 7,0 | 9,8 | 71,5 | 26,6 | 25 | o. r. | o. r. | o. r. |
| 907846 | 50 - 70 | 35 | 16 / 12 | 8,2 | 9,8 | 71,5 | 33,4 | 25 | o. r. | o. r. | o. r. |
| 907847 | 50 - 70 | 50 | 16 / 14 | 10,0 | 9,8 | 71,5 | 43,5 | 25 | o. r. | o. r. | o. r. |
| 907848 | 70 - 95 | 25 | 18 / 10 | 7,0 | 11,2 | 79,0 | 36,2 | 10 | o. r. | o. r. | o. r. |
| 907849 | 70 - 95 | 35 | 18 / 12 | 8,2 | 11,2 | 79,0 | 42,2 | 10 | o. r. | o. r. | o. r. |
| 907850 | 70 - 95 | 50 | 18 / 14 | 10,0 | 11,2 | 85,0 | 53,3 | 10 | o. r. | o. r. | o. r. |
| 907851 | 70 - 95 | 70 | 18 / 16 | 11,5 | 11,2 | 88,0 | 64,0 | 10 | o. r. | o. r. | o. r. |
| 907852 | 95 - 120 | 35 | 22 / 12 | 8,2 | 13,2 | 79,0 | 57,4 | 10 | o. r. | o. r. | o. r. |
| 907853 | 95 - 120 | 50 | 22 / 14 | 10,0 | 13,2 | 85,0 | 69,1 | 10 | o. r. | o. r. | o. r. |
| 907854 | 95 - 120 | 70 | 22 / 26 | 11,5 | 13,2 | 87,0 | 78,9 | 10 | o. r. | o. r. | o. r. |
| 907855 | 95 - 120 | 95 | 22 / 18 | 13,5 | 13,2 | 94,0 | 98,8 | 10 | o. r. | o. r. | o. r. |
| 907856 | 120 - 150 | 50 | 22 / 14 | 10,0 | 14,7 | 87,0 | 66,5 | 10 | o. r. | o. r. | o. r. |
| 907857 | 120 - 150 | 70 | 22 / 16 | 11,5 | 14,7 | 89,0 | 76,1 | 10 | o. r. | o. r. | o. r. |
| 907858 | 120 - 150 | 95 | 22 / 18 | 13,5 | 14,7 | 97,0 | 97,7 | 10 | o. r. | o. r. | o. r. |
| 907859 | 120 - 150 | 120 | 22 / 20 | 15,5 | 14,7 | 98,0 | 108,3 | 10 | o. r. | o. r. | o. r. |
| 906460 | 150 - 185 | 70 | 25 / 16 | 11,5 | 16,3 | 101,0 | 95,9 | 5 | o. r. | o. r. | o. r. |
| 906495 | 150 - 185 | 95 | 25 / 18 | 13,5 | 16,3 | 108,0 | 116,6 | 5 | o. r. | o. r. | o. r. |
| 906209 | 150 - 185 | 120 | 25 / 20 | 15,5 | 16,3 | 108,0 | 125,9 | 5 | o. r. | o. r. | o. r. |
| 906496 | 150 - 185 | 150 | 25 / 22 | 17,0 | 16,3 | 113,0 | 155,0 | 5 | o. r. | o. r. | o. r. |
| 906497 | 185 - 240 | 95 | 28 / 18 | 13,5 | 18,3 | 108,0 | 130,0 | 5 | o. r. | o. r. | o. r. |
| 906498 | 185 - 240 | 120 | 28 / 20 | 15,5 | 18,3 | 108,0 | 140,1 | 5 | o. r. | o. r. | o. r. |
| 906499 | 185 - 240 | 150 | 28 / 22 | 17,0 | 18,3 | 113,0 | 169,3 | 5 | o. r. | o. r. | o. r. |
| 906500 | 185 - 240 | 185 | 28 / 25 | 19,0 | 18,3 | 116,0 | 185,3 | 5 | o. r. | o. r. | o. r. |
| 906501 | 240 - 300 | 120 | 32 / 20 | 15,5 | 21,0 | 120,0 | 173,6 | 5 | o. r. | o. r. | o. r. |
| 906502 | 240 - 300 | 150 | 32 / 22 | 17,0 | 21,0 | 124,0 | 200,8 | 5 | o. r. | o. r. | o. r. |
| 906503 | 240 - 300 | 185 | 32 / 25 | 19,0 | 21,0 | 127,0 | 218,4 | 5 | o. r. | o. r. | o. r. |
| 906504 | 240 - 300 | 240 | 32 / 28 | 21,5 | 21,0 | 132,0 | 280,0 | 5 | o. r. | o. r. | o. r. |
| 906505 | 300 - - | 150 | 34 / 22 | 17,0 | 23,3 | 124,0 | 205,1 | 5 | o. r. | o. r. | o. r. |
| 906506 | 300 - - | 185 | 34 / 25 | 19,0 | 23,3 | 128,0 | 225,8 | 5 | o. r. | o. r. | o. r. |
| 906507 | 300 - - | 240 | 34 / 28 | 21,5 | 23,3 | 134,0 | 290,0 | 5 | o. r. | o. r. | o. r. |
| 906508 | 300 - - | 300 | 34 / 32 | 24,5 | 23,3 | 144,0 | 349,0 | 5 | o. r. | o. r. | o. r. |
| 906509 | 400 - - | 185 | 38 / 25 | 19,0 | 26,0 | 131,0 | 267,0 | 1 | o. r. | o. r. | o. r. |
| 906210 | 400 - - | 240 | 38 / 28 | 21,5 | 26,0 | 135,0 | 329,0 | 1 | o. r. | o. r. | o. r. |
| 906510 | 400 - - | 300 | 38 / 32 | 24,5 | 26,0 | 145,0 | 386,0 | 1 | o. r. | o. r. | o. r. |
| 907860 | 500 - - | 240 | 44 / 28 | 21,5 | 29,0 | 145,0 | 402,0 | 1 | o. r. | o. r. | o. r. |
| 907861 | 500 - - | 300 | 44 / 32 | 24,5 | 29,0 | 155,0 | 464,1 | 1 | o. r. | o. r. | o. r. |
| 907862 | 500 - - | 400 | 44 / 38 | 27,5 | 29,0 | 173,0 | 643,6 | 1 | o. r. | o. r. | o. r. |

Dimensions and specifications may be changed without prior notice.

o. r. = on request

KAC-U Bi-metallic washer

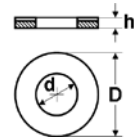


Washer KAC-U

Bi-metallic washer for the processing of aluminium-copper materials.
Only for use in dry areas.

Material

E-Al, one side copper plated



Dimensions

D Outer diameter
d Inner diameter
h Height

| Part no. | Size | Inner Ø mm | Outer Ø mm | Thickness mm | Unit | Net EUR/100 items at a purchase of | | |
|----------|-----------|---------------|---------------|-----------------|------|------------------------------------|-----------|------------|
| | | | | | | up to 100 | 101 - 500 | 501 - 1000 |
| 906049 | M8 x 1,5 | 8,5 | 18,0 | 1,0 | 10 | o. r. | o. r. | o. r. |
| 906050 | M10 x 1,5 | 11,0 | 22,0 | 2,0 | 10 | o. r. | o. r. | o. r. |
| 906051 | M12 x 1,5 | 13,0 | 28,0 | 2,0 | 10 | o. r. | o. r. | o. r. |
| 906052 | M14 x 1,5 | 15,0 | 28,0 | 2,0 | 10 | o. r. | o. r. | o. r. |
| 906053 | M16 x 1,5 | 17,0 | 35,0 | 2,0 | 10 | o. r. | o. r. | o. r. |

Dimensions and specifications may be changed without prior notice.

o. r. = on request

TOOLS



■ TABLE OF CONTENTS

| | |
|---------------------------|-----------|
| TOOLS | 22 |
| HELUTOOL HKS 1 | 24 |
| HELUTOOL HKS 35 | 25 |
| HELUTOOL HKS 32 | 26 |
| HELUTOOL HKS 34 S | 27 |
| HELUTOOL HKS 52 S | 28 |
| HELUTOOL HKM 1 | 29 |
| HELUTOOL HAM 1 | 30 |
| HELUTOOL HWZ 6 | 31 |
| HELUTOOL HWW 6/50 | 32 |
| HELUTOOL HWW 10/120 | 33 |
| HELUTOOL HMPI 20 | 34 |
| HELUTOOL HHPI 20 | 35 |
| HELUTOOL HAPI 20 | 36 |
| HELU-S-PE-WM | 37 |
| HELU-S-PE-SK | 38 |

HELUTOOL HKS 1 Cable shear



Cable shear HELUTOOL HKS 1

High quality cable shear for cutting finewire stranded Cu- /Al-wires

- blade made of special stainless steel according to EN10020
- ergonomical and extremely robust
- high cutting performance
- loose-free screw/pin fixing
- 2-component-handles
- with special safety box
- Cutting area:
 - straight blade area 0,5-6mm²
 - integrated cable cutter up to 50mm²
- Length: 150mm
- Weight: 170g

Scope of delivery

Cable shear HKS 1, Safetybox

| Part no. | Type | Unit | Net EUR/ item at a purchase of | | |
|----------|-------|------|--------------------------------|-------|--------|
| | | | 1 | 2 - 4 | 5 - 10 |
| 908229 | HKS 1 | 1 | o. r. | o. r. | o. r. |

Dimensions and specifications may be changed without prior notice.

o. r. = on request

HELUTOOL HKS 35 Cable shear



Cable shear HELUTOOL HKS 35

High quality forged cable cutter for cutting stranded aluminium and copper cables up to 35mm².

Long life cycle, low efforts during cutting and a clean round cut characterize this cable cutter.

- for cutting cables with outer diameters up to 11mm.
- forged
- tempered blade with precise finish
- burnished
- plastic coated handle
- Length 165mm
- Weight 200g

| Part no. | Type | Unit | Net EUR/item at a purchase of | | |
|----------|--------|------|-------------------------------|-------|--------|
| | | | 1 | 2 - 4 | 5 - 10 |
| 907602 | HKS 35 | 1 | o. r. | o. r. | o. r. |

Dimensions and specifications may be changed without prior notice.

o. r. = on request

HELUTOOL HKS 32 Cable shear



Cable shear HKS 32

- with telescopic handles
- for cutting stranded Al- and Cu-cables, single and multi-core
- cutting ranges up to 32mm
- the cutting blades consist of a hardened special tool steel
- Length 600 mm
- Weight 1500 g

Note

Not applicable for cutting steelwires, cables with steel-insertion and solid conductors.

| Part no. | Type | Unit | Net EUR/item at a purchase of | | |
|----------|--------|------|-------------------------------|-------|--------|
| | | | 1 | 2 - 4 | 5 - 10 |
| 907603 | HKS 32 | 1 | o. r. | o. r. | o. r. |

Dimensions and specifications may be changed without prior notice.

o. r. = on request

HELUTOOL HKS 34 S Cable cutter



Cable Cutter HKS 34 S

Very robust and smooth running cable cutter for cutting stranded aluminium and copper cables.

- up to 4x70mm² approx. 1x185mm²
- for finewiring conductors up to 34mm outer-diameter
- double needle beared and excentric drive combined with a special blade design guarantees the excellent efficiency of this cable cutter
- Length: 250mm
- Weight: 0,9kg

Note

Not applicable for cutting steel-wires, cables with steel-insertion and solid conductors.

| Part no. | Type | Unit | Net EUR/item at a purchase of | | |
|----------|----------|------|-------------------------------|-------|--------|
| | | | 1 | 2 - 4 | 5 - 10 |
| 908053 | HKS 34 S | 1 | o. r. | o. r. | o. r. |

Dimensions and specifications may be changed without prior notice.

o. r. = on request

HELUTOOL HKS 52 S Cable cutter



Cable cutter HKS 52 S

Very robust and smooth running cable cutter for cutting stranded aluminium and copper cables.

- up to 4x120mm² approx. 1x300mm² and finewiring conductors up to 52mm outside-diameter
- double, needle bared and patented eccentric drive combined with a special blade design guarantees the excellent efficiency of this cable cutter.
- Length: 325mm
- Weight: 1,2kg

Note

Not applicable for cutting steel-wires, cables with steel-insertion and solid conductors.

| Part no. | Type | Unit | Net EUR/item at a purchase of | | |
|----------|----------|------|-------------------------------|-------|--------|
| | | | 1 | 2 - 4 | 5 - 10 |
| 907605 | HKS 52 S | 1 | o. r. | o. r. | o. r. |

Dimensions and specifications may be changed without prior notice.

o. r. = on request

HELUTOOL HKM 1 Cable stripping knife



Cable stripping knife HKM 1

- With special grinding. The special blade prevented a damage of the conductor. The knife has a blade protection, sinking into the handle
- The changeable blade is made of stainless steel according to DIN EN 10020, hardness minimum 50 HRC
- High-quality, ergonomically formed handle is out of impact plastic (PA)
- Admission of the VDE up to 1000 volt according to EN/IEC 60900:2004 and GS-sign
- Length: 200 mm
- Weight: 0,1 kg

Note

Spare blade with moulded plastic insert for HKM 1, part no. 906246

| Part no. | Type | Cross-section mm ² | Unit | Net EUR/item at a purchase of | | |
|----------|-------|----------------------------------|------|-------------------------------|-------|--------|
| | | | | 1 | 2 - 4 | 5 - 10 |
| 906245 | HKM 1 | - | 1 | o. r. | o. r. | o. r. |

Dimensions and specifications may be changed without prior notice.

o. r. = on request

HELUTOOL HAM 1 Skinning tool



Skinning tool HAM 1

- For PVC-insulated round cables and a plurality of PUR-insulated cables up to 25mmØ.
- Suitable for longitudinal and round section. The depth of the cut is adjustable from 0 to 5mm. The cutting blade can be used double-sided.
- Length: 50 mm
- Weight: 0,16 kg

Note

Replacement cutting blade for HAM 1, Part 906234

Scope of delivery

HAM 1 incl. plastic box

| Part no. | Type | Cross-section mm ² | Unit | Net EUR/item at a purchase of | | |
|----------|------|----------------------------------|------|-------------------------------|-------|--------|
| | | | | 1 | 2 - 4 | 5 - 10 |
| 906233 | HAM1 | - | 1 | o. r. | o. r. | o. r. |

Dimensions and specifications may be changed without prior notice.

o. r. = on request

HELUTOOL HWZ 6 Crimping tool



Crimping tool HWZ 6

Crimping tool for noninsulated terminals from 0,5 up to 16mm². The ratchet guarantees a permanent high quality crimping result.

- Length: 240 mm
- Weight: 0,4 kg

| Part no. | Type | Cross-section min. - max. mm ² | Unit | Net EUR/ item at a purchase of | | |
|----------|-------|---|------|--------------------------------|-------|--------|
| | | | | 1 | 2 - 4 | 5 - 10 |
| 907611 | HWZ 6 | 0,5 - 16,0 | 1 | o. r. | o. r. | o. r. |

Dimensions and specifications may be changed without prior notice.

o. r. = on request

HELUTOOL HWW 6/50 Crimping tool



Crimping tool HWW 6/50

- Crimping tool for crimping tubular cable lugs and connectors of the HELU-S-RK tubular cable lugs and HELU-S-SV tubular butt connectors - series
- Application range: 6 up to 50mm²
- Cross section can be adjusted by turning the in-built revolving dies
- No need of changing dies
- Tool points by small measurements, light weight and an extremely high crimping quality due to WM-crimping
- Length: 380 mm
- Weight: 1,3 kg

| Part no. | Type | Cross-section min. - max. mm ² | Unit | Net EUR/item at a purchase of | | |
|----------|----------|---|------|-------------------------------|-------|--------|
| | | | | 1 | 2 - 4 | 5 - 10 |
| 907612 | HWW 6/50 | 6,0 - 50,0 | 1 | o. r. | o. r. | o. r. |

Dimensions and specifications may be changed without prior notice.

o. r. = on request

HELUTOOL HWW 10/120 Crimping tool



HELUTOOL HWW 10/120

- Crimping tool for crimping tubular cable lugs and connectors of the HELU-S-RK tubular cable lugs and HELU-S-SV tubular butt connectors - series
- Application range: 10-120mm²
- The cross section can be adjusted by turning the in-built revolving dies
- No need of changing dies
- Feature: Large processing area, light weight and an extremely high crimping quality due to WM-crimping
- Length: 660 mm
- Weight: 4,1 kg

| Part no. | Type | Cross-section min. - max. mm ² | Unit | Net EUR/item at a purchase of | | |
|----------|------------|---|------|-------------------------------|-------|--------|
| | | | | 1 | 2 - 4 | 5 - 10 |
| 907613 | HWW 10/120 | 10,0 - 120,0 | 1 | o. r. | o. r. | o. r. |

Dimensions and specifications may be changed without prior notice.

o. r. = on request

HELUTOOL HMPI 20 Mechanical hand press in toolbox



HELUTOOL HMPI20 Hand-operated mechanical compression tool

Hand-operated mechanical compression tool for crimping cable lugs and connectors up to 300mm²

- Light and compactly construction form
- Universal usage: dies for all versions of cable lugs are available
- 360° revolving head with quick opening and closing
- Continuous moveable telescopic handle
- Press capacity: approx. 60 kN
- Length: 560 up to 830 mm
- Weight: 3,6 kg

Note

Exclusive inserts

Scope of delivery

HELUTOOL HMPI200 including toolbox

| Part no. | Type | Cross-section min. - max. mm ² | Unit | Net EUR/item at a purchase of | | |
|----------|---------|---|------|-------------------------------|-------|--------|
| | | | | 1 | 2 - 4 | 5 - 10 |
| 907614 | HMPI 20 | - | 1 | o. r. | o. r. | o. r. |

Dimensions and specifications may be changed without prior notice.

o. r. = on request

HELUTOOL HHPI 20 Hydraulic hand press in toolbox



HELUTOOL HHPI 20 Hydraulic hand press in toolbox

- extremely fast operation through two-stage hydraulic pump
- large processing area up to 300mm²
- rotatable quick release head 180 °
- with folding clasp for effortless operation even in hard reach places
- lightweight and portable, compact design
- built-in pressure relief valve, even in the case of a false pressing no damage to the tool and inserts
- universally applicable: inserts are available for all cable lug types
- Press capacity: ca. 62kN
- Length: 396 mm
- Weight: ca. 2,8 kg

Note
Exclusive inserts

Scope of delivery
HELUTOOL HHPI 20 including toolbox

| Part no. | Type | Unit | Net EUR/item at a purchase of | | |
|----------|---------|------|-------------------------------|-------|--------|
| | | | 1 | 2 - 4 | 5 - 10 |
| 908286 | HHPI 20 | 1 | o. r. | o. r. | o. r. |

Dimensions and specifications may be changed without prior notice.

o. r. = on request

HELUTOOL HAPI 20 Battery hydraulic tool in toolbox



HELUTOOL HAPI 20 Battery hydraulic tool in toolbox

- extremely fast working through two-stage hydraulic pump
- large processing area up to 300 mm²
- Quick release fastener 270 ° rotatable
- Effortless operation by folding clasp even in hard reach places
- Pressure relief button by hand operation available from both sides (left and right)
- Built-in relief valve, even at erroneous pressing no damaging the tool or inserts
- Lithium-ion battery technology, thereby no memory effect, very low self-discharge
- high capacity by 3.0 Ah-battery
- Lug for attaching balancers and carrying belt available
- ergonomic handle with a balanced weight distribution for fatigue-free and safe work
- Casing grip sleeve and pressure relief button entirely of insulating and shock-resistant plastic material
- universal application: inserts for all types of cable shoes available
- built-in electronic module for:
 - Permanent battery power level control
 - Monitoring of the operation and status indication
 - Display of the next service interval
 - Error indication in case of malfunction
- Press capacity: about 62kN
- Operating voltage: 14,4 Volt
- Dimensions (WxHxD):
B 95 x L 350 x H 310 mm
- Weight: 3,9 kg (incl. Battery)
- Charger: 220-240V 50-60Hz 7.2 - 18V
- Charging time approx 50 min.

Note
exclusive dies

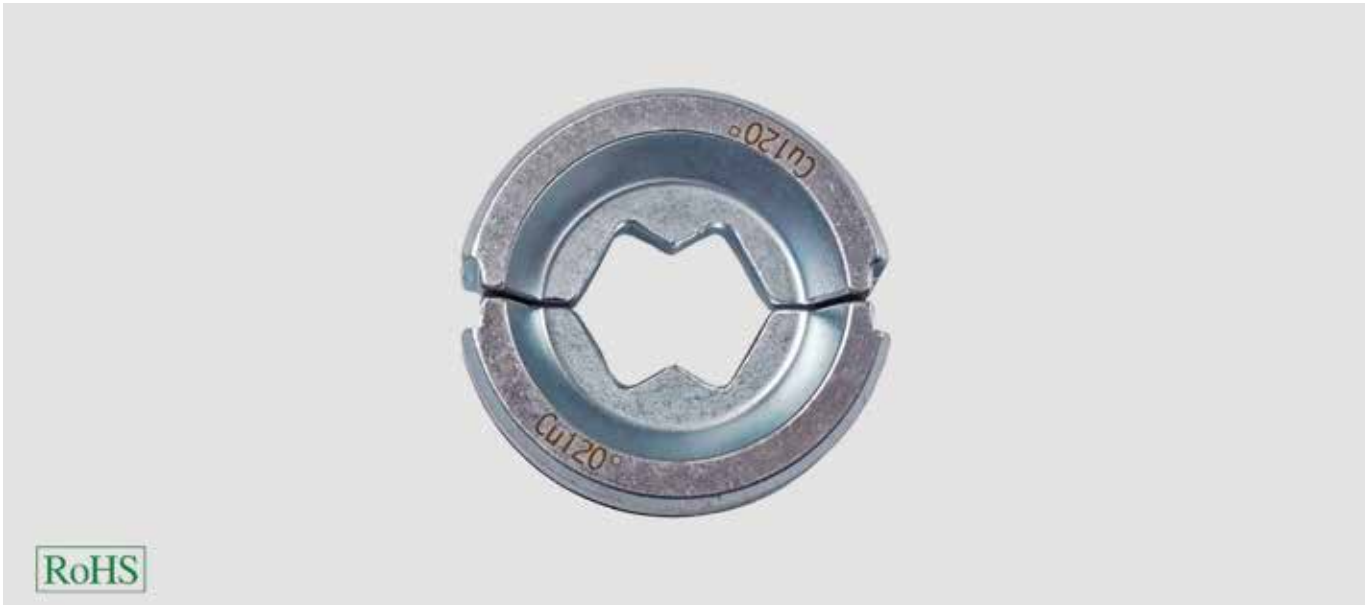
Scope of delivery
HELUTOOL HAPI including toolbox

| Part no. | Type | Unit | Net EUR/item at a purchase of | | |
|----------|---------|------|-------------------------------|-------|--------|
| | | | 1 | 2 - 4 | 5 - 10 |
| 908287 | HAPI 20 | 1 | o. r. | o. r. | o. r. |

Dimensions and specifications may be changed without prior notice.

o. r. = on request

HELU-S-PE-WM Inserts WM-shape



Dies for cable lugs and connectors

For crimping cable lugs and connectors of the HELU-S-RK-CU and HELU-S-SV-CU series

Note

Suitable for:
HELUTOOL HMPI 20, HHPI 20 and HAPI 20

| Part no. | Type | Cross-section mm ² | Unit | Net EUR/item at a purchase of | | |
|----------|---------|----------------------------------|------|-------------------------------|-------|--------|
| | | | | 1 | 2 - 4 | 5 - 10 |
| 908230 | WMCU6 | 6,0 | 1 | o. r. | o. r. | o. r. |
| 908231 | WMCU10 | 10,0 | 1 | o. r. | o. r. | o. r. |
| 908232 | WMCU16 | 16,0 | 1 | o. r. | o. r. | o. r. |
| 908233 | WMCU25 | 25,0 | 1 | o. r. | o. r. | o. r. |
| 908234 | WMCU35 | 35,0 | 1 | o. r. | o. r. | o. r. |
| 907615 | WMCU50 | 50,0 | 1 | o. r. | o. r. | o. r. |
| 907616 | WMCU70 | 70,0 | 1 | o. r. | o. r. | o. r. |
| 907617 | WMCU95 | 95,0 | 1 | o. r. | o. r. | o. r. |
| 907618 | WMCU120 | 120,0 | 1 | o. r. | o. r. | o. r. |
| 907619 | WMCU150 | 150,0 | 1 | o. r. | o. r. | o. r. |
| 907620 | WMCU185 | 185,0 | 1 | o. r. | o. r. | o. r. |
| 907621 | WMCU240 | 240,0 | 1 | o. r. | o. r. | o. r. |
| 907622 | WMCU300 | 300,0 | 1 | o. r. | o. r. | o. r. |

Dimensions and specifications may be changed without prior notice.

o. r. = on request

HELU-S-PE-SK Inserts hexagonal-shape



Inserts for cable lugs and connectors

For processing HELU-S-PK compression cable lugs and HELU-S-PV tubular compression joints

Note

Suitable for:
HELUTOOL HMPI 20, HHPI 20 and HAPI 20

| Part no. | Type | Code type | Cu mm ² | Al mm ² | Unit | Net EUR/item at a purchase of | | |
|----------|-----------------|-----------|--------------------|--------------------|------|-------------------------------|-------|--------|
| | | | | | | 1 | 2 - 4 | 5 - 10 |
| 908273 | SKCU6 | 5 | 6 | - | 1 | o. r. | o. r. | o. r. |
| 908274 | SKCU10 | 6 | 10 | - | 1 | o. r. | o. r. | o. r. |
| 908275 | SKCU16 | 8 | 16 | - | 1 | o. r. | o. r. | o. r. |
| 908276 | SKCU25AL10 | 10 | 25 | 10 | 1 | o. r. | o. r. | o. r. |
| 908277 | SKCU35AL16/25 | 12 | 35 | 16 + 25 | 1 | o. r. | o. r. | o. r. |
| 908278 | SKCU50AL35 | 14 | 50 | 35 | 1 | o. r. | o. r. | o. r. |
| 908279 | SKCU70AL50 | 16 | 70 | 50 | 1 | o. r. | o. r. | o. r. |
| 908280 | SKCU95AL70 | 18 | 95 | 70 | 1 | o. r. | o. r. | o. r. |
| 908281 | SKCU120 | 20 | 120 | - | 1 | o. r. | o. r. | o. r. |
| 908282 | SKCU150AL95/120 | 22 | 150 | 95 + 120 | 1 | o. r. | o. r. | o. r. |
| 908283 | SKCU185AL150 | 25 | 185 | 150 | 1 | o. r. | o. r. | o. r. |
| 908284 | SKCU240AL185 | 28 | 240 | 185 | 1 | o. r. | o. r. | o. r. |
| 908285 | SKCU300AL240 | 32 | 300 | 240 | 1 | o. r. | o. r. | o. r. |

Dimensions and specifications may be changed without prior notice.

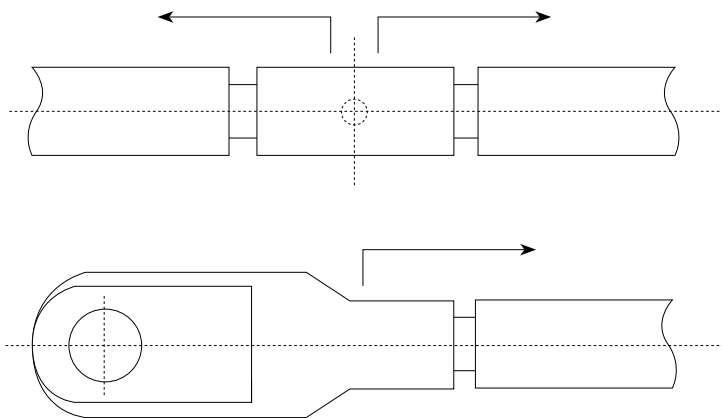
o. r. = on request

Part No. Index

| Part no. | Page | Part no. | Page |
|-----------------|-------------|-----------------|-------------|
| 90910 – 90935 | 11 | 907594 – 907596 | 16 |
| 93263 – 93275 | 18 | 907597 – 907599 | 7 |
| 906049 – 906053 | 22 | 907600 | 8 |
| 906172 – 906173 | 15 | 907601 | 7 |
| 906174 – 906175 | 16 | 907602 | 26 |
| 906185 | 15 | 907603 | 27 |
| 906209 | 20 | 907605 | 29 |
| 906210 | 21 | 907611 | 32 |
| 906212 | 16 | 907612 | 33 |
| 906233 | 31 | 907613 | 34 |
| 906245 | 30 | 907614 | 35 |
| 906406 | 19 | 907615 – 907622 | 38 |
| 906436 – 906459 | 14 | 907677 – 907728 | 12 |
| 906460 | 20 | 907731 – 907749 | 13 |
| 906461 – 906477 | 14 | 907811 – 907830 | 17 |
| 906478 – 906485 | 15 | 907835 | 19 |
| 906486 – 906494 | 16 | 907836 – 907859 | 20 |
| 906495 – 906508 | 20 | 907860 – 907862 | 21 |
| 906509 – 906510 | 21 | 907865 – 907884 | 14 |
| 906511 – 906521 | 19 | 908053 | 28 |
| 906524 – 906533 | 12 | 908229 | 25 |
| 906534 – 906538 | 13 | 908230 – 908234 | 38 |
| 907303 – 907317 | 4 | 908273 – 908285 | 39 |
| 907318 – 907353 | 5 | 908286 | 36 |
| 907354 – 907407 | 6 | 908287 | 37 |
| 907467 – 907477 | 7 | | |
| 907478 | 8 | | |
| 907479 – 907487 | 7 | | |
| 907488 | 8 | | |
| 907489 – 907492 | 7 | | |
| 907493 | 8 | | |
| 907494 – 907496 | 7 | | |
| 907497 | 8 | | |
| 907498 – 907504 | 7 | | |
| 907505 – 907507 | 8 | | |
| 907508 – 907543 | 9 | | |
| 907544 – 907567 | 10 | | |
| 907568 – 907593 | 15 | | |

■ INSTRUCTIONS FOR ASSEMBLY OF CABLE LUGS AND JOINTS – GENERAL

1. The measurements of the cable lugs/joints as well as their cross-section assignment have to be taken from the catalogue.
2. The end of the cable has to be cut right-angled to the joint and to be stripped ca. 10 % corresponding to the length of the cable lug receptacle. (The receptacle elongates a bit during the compression)
3. The wire ends have to be cleaned thoroughly of dirt and oxide rests prior to the compression. Sector wires have to be rounded.
4. The wire is pushed as far as it will go in the cable lug receptacle, or rather to the middle of the joint.
5. Prior to the compression it has to be checked if the wire and the cable lug, or rather the joint, have the same cross-section marking and match according to the catalogue.
6. It has to be detected if the compression tool is ready for the montage with the right compression insert.
7. The compression process, with cable lug and joint, happens from the end of the cable in the direction of the end of the receptacle (see sketch).



The number of compressions is based on the following tables.

■ COMPRESSION INSTRUCTION

Minimum number of necessary compressions when using HELU-S-RK.tubular lugs and -joints
 HELU-S-SV (WM-compression):

| Cross-section in mm | Compression Number x Width | HWW 6/50 907612 | HWW 10/120 907613 | HMPi 20 907614 | HHPi 20 908286 | HAPi 20 908287 |
|---------------------|----------------------------|--------------------|----------------------|-------------------|-------------------|-------------------|
| 6 | 1 x 5 mm | • | | | | |
| | 1 x 7 mm | | | • | • | • |
| 10 | 1 x 5 mm | • | • | | | |
| | 1 x 7 mm | | | • | • | • |
| 16 | 1 x 5 mm | • | • | | | |
| | 1 x 7 mm | | | • | • | • |
| 25 | 2 x 5 mm | • | • | | | |
| | 1 x 10 mm | | | • | • | • |
| 35 | 2 x 5 mm | • | • | • | • | • |
| | 1 x 10 mm | | | | | |
| | 1 x 12 mm | | | | | |
| 50 | 2 x 5 mm | • | • | • | • | • |
| | 1 x 12 mm | | | | | |
| 70 | 2 x 5 mm | | • | • | • | • |
| | 1 x 12 mm | | | | | |
| 95 | 2 x 5 mm | | • | • | • | • |
| | 1 x 12 mm | | | | | |
| 120 | 3 x 5 mm | | • | • | • | • |
| | 2 x 7 mm | | | | | |
| | 1 x 12 mm | | | | | |
| 150 | 3 x 5 mm | | | • | • | • |
| | 2 x 7 mm | | | | | |
| 185 | 3 x 5 mm | | | • | • | • |
| | 2 x 7 mm | | | | | |
| | 2 x 10 mm | | | | | |
| 240 | 3 x 5 mm | | | • | • | • |
| | 3 x 7 mm | | | | | |
| | 2 x 13 mm | | | | | |
| 300 | 4 x 5 mm | | | • | • | • |
| | 3 x 7 mm | | | | | |
| | 2 x 13 mm | | | | | |

Important : The „instructions for assembly of cable lugs and joints“ have to be followed when producing compressions.
 Joints : Minimum number of necessary compressions per side.

■ COMPRESSION INSTRUCTION

Minimum number of necessary compressions when using CU-compression cable lugs of HELU-S-PK-CU-DIN and HELU-S-PV-CU-DIN series

| Cross-section in mm | Index | Compression Number x Width | HMPi 20 90250 | HHPi 20 91132 | HAPi 20 91142 | HAPi 30 91162 |
|---------------------|-------|----------------------------|-----------------|---------------|---------------|---------------|
| 6 | 5 | 1 x 5 mm | | | | |
| | | 1 x 7 mm | • | • | • | • |
| 10 | 6 | 1 x 5 mm | | | | |
| | | 1 x 7 mm | • | • | • | • |
| 16 | 8 | 2 x 5 mm | | | | |
| | | 1 x 12 mm | • | • | • | • |
| 25 | 10 | 2 x 5 mm | | | | |
| | | 1 x 12 mm | • | • | • | • |
| 35 | 12 | 2 x 5 mm | • | • | • | |
| | | 1 x 10 mm | | | | |
| | | 1 x 12 mm | | | | • |
| 50 | 14 | 3 x 5 mm | • | • | • | |
| | | 1 x 12 mm | | | | • |
| 70 | 16 | 3 x 5 mm | • | • | • | |
| | | 1 x 12 mm | | | | • |
| 95 | 18 | 3 x 5 mm | • | • | • | |
| | | 4 x 5 mm | • * DB earthing | | | |
| | | 2 x 10 mm | | | | • |
| 120 | 20 | 3 x 5 mm | • * DB earthing | | | |
| | | 4 x 5 mm | • | • | • | |
| | | 2 x 10 mm | | | | • |
| 150 | 22 | 4 x 5 mm | • | • | • | • |
| | | 2 x 10 mm | | | | |
| 185 | 25 | 4 x 5 mm | • | • | • | • |
| | | 2 x 10 mm | | | | |
| 240 | 28 | 4 x 5 mm | • | • | • | • |
| | | 2 x 13 mm | | | | |
| 300 | 32 | 4 x 5 mm | • | • | • | |
| | | 4 x 7 mm | | | | • |
| | | 2 x 13 mm | | | | |

Important : The „instructions for assembly of cable lugs and joints“ have to be followed when producing compressions.
 Joints : Minimum number of necessary compressions per side.

■ COMPRESSION INSTRUCTION

Minimum number of necessary compressions when using HELUKABEL-compression cable lugs and -joints HELU-S-PK-AL-DIN and HELU-S-PV-AL-DIN-series of aluminium.

| Cross-section in mm | Index | Compression Number x Width | HMPi 20 907614 | HHPi 20 908286 | HAPi 20 908287 |
|---------------------|-------|------------------------------------|----------------|----------------|----------------|
| 10 | 10 | 2 x 5 mm 1 x 12 mm | • | • | • |
| 16 | 10 | 3 x 5 mm 1 x 12 mm | • | • | • |
| | 12 | 3 x 5 mm 1 x 10 mm 1 x 12 mm | • | • | • |
| 25 | 12 | 4 x 5 mm 1 x 10 mm 2 x 12 mm | • | • | • |
| 35 | 14 | 5 x 5 mm 2 x 12 mm | • | • | • |
| 50 | 16 | 5 x 5 mm 2 x 12 mm | • | • | • |
| 70 | 18 | 6 x 5 mm 3 x 10 mm | • | • | • |
| 95 | 22 | 6 x 5 mm 3 x 10 mm | • | • | • |
| 120 | 22 | 6 x 5 mm 3 x 10 mm | • | • | • |
| 150 | 25 | 6 x 5 mm 3 x 10 mm | • | • | • |
| 185 | 28 | 6 x 5 mm 3 x 13 mm | • | • | • |
| 240 | 32 | 6 x 5 mm 5 x 7 mm 3 x 13 mm | • | • | • |

Important : The „instructions for assembly of cable lugs and joints“ have to be followed when producing compressions.
Joints : Minimum number of necessary compressions per side.

■ CABLE ACCESSORIES

YOU CAN FIND MORE ACCESSORIES IN THE CABLE ACCESSORIES CATALOGUE AND ON WWW.HELUKABEL.DE/ACCESSORIES



Cable glands

- Cable glands for standard applications: made of plastic, made of brass
- Cable glands for special application conditions: for electromagnetic compatibility (EMC), for robust applications and special chemical resistance, for increased usage temperatures, for explosive areas for special installation conditions, for special pressure conditions
- Accessories



Cable protection tubes

- Corrugated tubes: for standard applications, oversized, split corrugated tubes
- Tube connectors
- Highly flexible protection tubes: made of plastic with coil springs, made of metal, spiral wound
- Cable protection tubes for heavy-duty applications
- Metal consults type, plastic-coated
- plastic protection tubes
- Tube connectors for metal protection tubes



Insulating and shrank tubes

- Braided hoses
- High temperature protection
- Insulating tubes
- Heat-shrink tubing
- End caps
- Accessories



Bundling, binding, fixing

- Plastic helix
- Cable ties
- Velcro fasteners
- Mounting base



Termination and connection sleeves

- Telecommunications cables
- Low voltage
- Medium voltage
- Accessories



Identification and marking

- Marking rings
- Cable markers



Core end sleeves and cable lugs

- Core end sleeves
- Shield connectors
- Quetschkabelschuhe
- Tubular cable lugs
- Compression joint sleeves



Tools

- Socket wrench
- Cable tie tools
- Crimping
- Cutting
- Stripping
- Mounting

NOTES

Technical modifications

© HELUKABEL® GmbH Hemmingen

Specifications have been carefully checked and are believed to be correct; however, no responsibility is assumed for inaccuracies. Subject to technical modifications. Consequently all illustrations, numerical data, etc. are provided without guarantee. Color deviations between photos and delivered goods cannot be avoided. Reproduction or duplication of the text and illustrations, in whole or in part, remain reserved. The transfer of copyrights always requires the written consent of HELUKABEL® GmbH. Our General Terms of Delivery and Payment, which can be viewed at www.helukabel-group.com, apply.

Safety notice

The products described in the catalog are produced in accordance with national and international standards, as well as plant standards; application safety, as stipulated in the safety directives, standards, and statutory regulations, as amended, is provided. With the prerequisite of proper and professional installation and use, the possibility of product-specific dangers can be excluded. For each product this catalog describes general information for use. Independent of the above, the applicable DIN VDE specifications apply. However, installation and processing must only be executed by qualified electricians.

Our General Terms of Delivery and Payment, which can be viewed at www.helukabel-group.com, apply



HELUKABEL®



Logistics-Centre Hemmingen / Stuttgart