

Some Partners To Shinland



CITIZEN

OSRAM
Opto Semiconductors



LUMENS
Leading the LED Revolution

LUMILEDS



EACH RAY IS
BRIGHTER
IN SHINLAND



+7 (499) 647-80-74
zakaz@citi-el.ru
www.citi-el.ru



+7 (499) 647-80-74
zakaz@citi-el.ru
www.citi-el.ru



EACH RAY IS BRIGHTER IN SHINLAND
www.shinland.com.cn

西朗德
专注光学领域26年

SPECIALIZATION IN
OPTICS

26
years



SHINLAND INTRODUCTION

EACH RAY IS BRIGHTER IN SHINLAND

西朗德
不断超越，继续领跑

西朗德光学拥有26年的照明光学经验，于2013年正式在深圳设立总部，成立深圳市西朗德光学有限公司，自成立以来，我们专注于光学解决方案，秉承着“让光更美”的企业使命，公司通过技术和产品的不断创新，持续为客户提供更好更具竞争力的光学解决方案。目前，西朗德光学服务领域已涵盖商业照明、家居照明、户外照明、汽车照明、舞台照明、特种照明等。

西朗德总部位于深圳市南山区，工厂位于东莞塘厦，属于国家高新技术企业，深圳总部设立研发中心、营销中心，业务辐射海内外，先后在中山、佛山、厦门、华东设立销售办事处。东莞工厂设立模具车间、注塑车间、喷涂车间、镀膜车间、装配车间、检测实验室等，能为客户提供放心保障的产品品质。

Keep Exceeding, Continue to Lead

Shinland Optical is a company with 20+ years experience in lighting optics. In 2013 our headquarter was setup in Shenzhen China. After then we focus our effort in providing lighting optics solution to our customer with advance and innovative technologies. Now, our service include business lighting, home lighting, outdoor lighting, automotive lighting, stage lighting and special lighting etc. "Make Light to be More Beautiful" is our company mission.

Shinland Optical is a national high tech enterprise. Our headquarter is located in Nanshan, Shenzhen, and our manufacturing facility is located in Tongxia, Dongguan. In our Shenzhen headquarter, we have our R&D centre and Sales/ Marketing Centre. Sales Offices are located in Zhongshan, Foshan, Xiamen and Shanghai. Our Dongguan manufacturing facility has plastic molding, overspraying, vacuum plating, assembling workshop and test lab etc to produce quality product to our customers.

www.shinland.com.cn

EACH RAY IS BRIGHTER IN SHINLAND

26years
Specialization In Optics

精密模具加工

Precision Mold Processing

纳米电镀喷涂

Nano Electroplating Spray

光学注塑成型

Optical Injection Molding

产品验证实验室

Product Verification Laboratory

光学设计

Optical Design

完整照明解决方案

Complete Lighting Solution

光学应用培训

Optical Application Training

光学资讯平台

Optical Information Platform

SHINLAND
SERVICE
西朗德服务



Vertical Integrated Production

垂直一体化生产

High-Speed Precision Machining Center

高速精密加工中心

德国高端五轴加工机床设备, 模具
加工精度 +/- 2μm
蔡司三坐标检测
模具CNC直接加工高光镜面

Germany Exeron 5-Axis Machine,
Excellent Precision of +/- 2μm,
ZEISS Three-Dimensional Inspection,
CNC Processes High-Gloss Mirror Surface
Directly.

Automated Injection Molding Production Line

全自动化注塑生产线

百万级无尘生产车间
高精度注塑机
全自动化注塑生产线
独立供料系统及无油空压系统

Class 10,000 Dust-Free Production Workshop
High Precision Injection Molding Machine
Automated Injection Molding Production Line
Independent Material Feeding System and
Oil-Free Compressed Air System

Class 10,000 clean room environment

自动化万级无尘电镀车间

进口全自动电镀设备
十万级电镀车间
超薄电镀工艺

Imported Automatic Plating Equipment
Class 10,000 Clean Room Environment
Ultra-thin Plating Process

Reliability testing

信赖性测试

百格测试	冷热冲击测试
盐雾测试	老化测试
泡碱测试	集成分布光度计测试
高温高湿测试	
Cross Hatch Test	Thermal Shock Test
Salt Spary Aging Test	Aging Test
Alkaline Test	Photometric Testing of Integrated Distribution
High Temperature & Himidity Test	



INDEX

SL-I Pro

SL 反光杯系列
SL Reflector

SL-I

SL 反光杯系列
SL Reflector

SL-II

SL-A 反光杯加凸透镜系列
SL-A Reflector with Dome

SL-B 电镀透镜系列
SL-B ODR Lens

SL-D 全反射透镜系列
SL-D TIR Lens

SL-PL-AG 全反射透镜系列
SL-PL-AG TIR Lens

SL-IV

SL-RF-AF 防眩罩系列
SL-RF-AF Anti-glare Trim

SL-VII

SL-PL-AM 黑洞透镜系列
SL-PL-AM Front Focal Lens

SL-RF-AO 无缝接轨反光杯系列
SL-RF-AO Exchangeable Design
(Reflector)

SL-PL-AO 无缝接轨透镜系列
SL-PL-AO Exchangeable Design
(Lens)

SL-III

SL-RF-AD 黑光反光杯加凸透镜系列
SL-RF-AD Dark Light Reflector with Dome

SL-RF-AG 黑光反光杯
SL-RF-AG Dark Light Reflector

SL-V

SL-E 条形灯反光杯系列
SL-E Profile Linear

SL-RF-AE 一体化线形反光杯系列
SL-RF-AE Profile Linear II

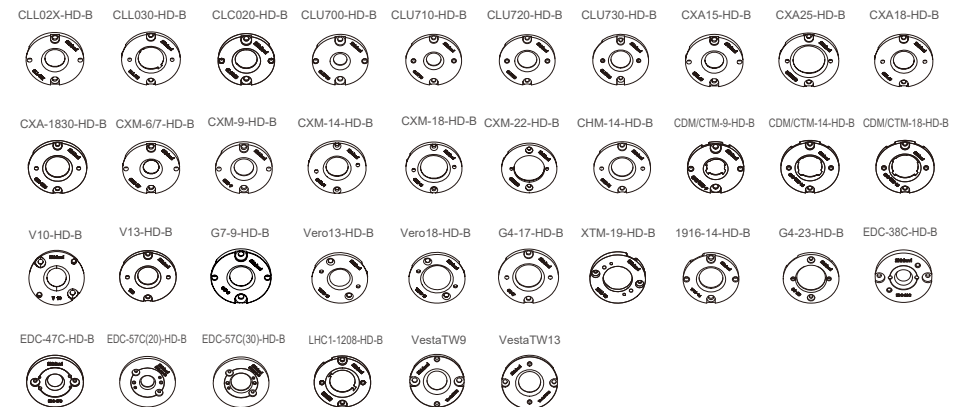
SL-VIII

SL-RF-AQ 磁吸条形灯系列
SL-RF-AQ Magnetic Linear Reflector

SHINLAND'S SERIES A HOLDERS 西朗德支架A系列



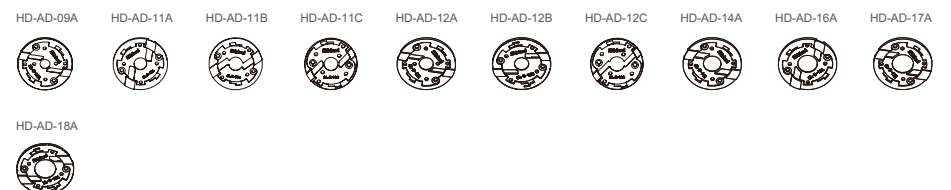
SHINLAND'S SERIES B HOLDERS 西朗德支架B系列



SHINLAND'S SERIES C HOLDERS 西朗德支架C系列



SHINLAND'S SERIES AD HOLDERS 西朗德支架AD系列



* 灯珠的操作功率与光学器件的使用温度以整灯实测为主。

The power usage of the COB and temperature of the optical components are based on the actual testing of the luminaire.

Matching Holder for COB

光源支架搭配表

BRIDGELUX 普瑞

LED P/N		A HOLDER	B HOLDER	C HOLDER	D HOLDER	Dimensions	LES
V4 HD	Gen7	SL-V4HD-HD-A	/	/	/	12.5*12.5	4.5
V6 HD	Gen7	SL-blx C6-HD-A SL-HD-AA-09A SL-HD-AA-09B	SL-CLU700-HD-B	SL-HD-AC-09A	SL-HD-AD-09A	13.5*13.5	6.3
V6	Gen6	SL-V8-HD-A	/	/	/	12.5*12.5	6.1
V8	Gen6、Gen7	SL-V8-HD-A	/	/	/	12.5*12.5	8.1
	Gen8	SL-V8-HD-A	/	/	/	12.5*12.5	8.5
V10	Gen6	SL-blx C8-HD-A	SL-CXA-15-HD-B	/	SL-HD-AD-11A	15.8*15.8	9.9
	Gen7、Gen8	SL-CLL020-HD-A SL-HD-AA-12A SL-HD-AA-12B	SL-CLL02X-HD-B	/	SL-HD-AD-12A	13.5*13.5	10.2
V13	Gen6	SL-V13-HD-A	SL-V13-HD-B	/	/	15.8*15.8	13.4
	Gen7、Gen8	SL-CHM-14-HD-A	SL-CHM-14-HD-B	/	SL-HD-AD-16A	19*19	14/14.8
V15	Gen6、Gen8	SL-CXM-18-HD-A	SL-G4-17-HD-B	/	/	21*21	15.2/15.3
V18	Gen7、Gen8	/	SL-S19-HD-B	/	/	24*24	19.2
V22	Gen6、Gen7、Gen8	/	SL-CXM-22-HD-B	/	/	28*28	22/22.6/23.3
Vero 10	Gen6、Gen7、Gen8	自带支架	/	/	/	30.8	9.9
Vero 13	Gen6、Gen7、Gen8	自带支架	SL-Vero13-HD-B	/	/	36.2	13.2
Vero 18	Gen6、Gen7、Gen8	自带支架	SL-Vero18-HD-B	/	/	36.2	18.4
E6 CA (blx C6)	Gen1	SL-blx C6-HD-A SL-HD-AA-08A SL-HD-AA-09A SL-HD-AA-09B	SL-CLU700-HD-B	/	SL-HD-AD-09A	13.35*13.35	6
	Gen2	SL-VestaTW6-HD-A	/	/	/	12.5*12.5	6.1
E8CA (blx C8)	Gen1	SL-blx C8-HD-A SL-HD-AA-11A SL-HD-AA-11B	SL-CXA-15-HD-B	/	SL-HD-AD-11A	15.85*15.85	8.9
	Gen2	SL-V8-HD-A	/	/	/	12.5*12.5	8.1
E13	Gen1	SL-CXA18-HD-A	SL-CXA-18-HD-B	/	SL-HD-AD-14A	17.85*17.85	12
Vesta TW6	Gen2	SL-VestaTW6-HD-A	/	/	/	12.5*12.5	6.3
Vesta TW9	Gen2	/	SL-VestaTW9-HD-B	/	/	15.85*15.85	10
Vesta TW13	Gen2	/	SL-VestaTW13-HD-B	/	/	18.8*18.8	14.2

CITIZEN 西铁城

LED P/N		A HOLDER	B HOLDER	C HOLDER	D HOLDER	Dimensions	LES
CLU028	1201C4、1202C4、1203C4、1204C4	SL-CLL020-HD-A SL-HD-AA-12A SL-HD-AA-12B	SL-CLL02X-HD-B	/	SL-HD-AD-12A	13.5*13.5	9.8
CLU038	1205C4、1206C4、1208C4、1210C4	SL-CLL03X-HD-A2、 SL-CLL030-HD-A	SL-CLL03X-HD-B	/	SL-HD-AD-17A	19*19	14.5
CLU048	1211C4、1212C4、1216C4、1812C4、1818C4	/	SL-CXM-22-HD-B	/	/	28*28	22.0
CLU701	0303C4、0304C4、1002C4	SL-blx C6-HD-A	SL-CLU700-HD-B	SL-HD-AC-09A	SL-HD-AD-09A	13.5*13.5	6.0
CLU711	1204C4	/	SL-CLU710-HD-B	/	SL-HD-AD-16A	19*19	8.5
CLU721	1206C4	SL-CLL03X-HD-A2	SL-CLU720-HD-B	/	/	19*19	11.0
CLU731	1210C4	/	SL-CLU730-HD-B	/	/	28*28	13.0
CLU0A0	0303C1	SL-CLU0B0-HD-A	/	/	/	11.5*11.5	4.6
CLU0B0	0304C1、0602C1、1201C1、0603C1	SL-CLU0B0-HD-A	/	/	/	11.5*11.5	6.0
CLC020	057A5	/	SL-CLC020-HD-B	/	/	14*19	9.8

CREE 科锐

LED P/N		A HOLDER	B HOLDER	C HOLDER	D HOLDER	Dimensions	LES
CXA13	CXA1304、CXA1310	SL-CXA13-HD-A SL-HD-AA-08A SL-HD-AA-09A SL-HD-AA-09B	SL-CLU700-HD-B	SL-HD-AC-09A	SL-HD-AD-09A	13.5*13.5	6
CXB13	CXB1310	SL-CXA13-HD-A SL-HD-AA-09A SL-HD-AA-09B	SL-CLU700-HD-B	SL-HD-AC-09A	SL-HD-AD-09A	13.5*13.5	6
CXA15	CXA1507、CXA1510、CXA1512	SL-CXA15-HD-A SL-HD-AA-11A SL-HD-AA-11B	SL-CXA15-HD-B	/	SL-HD-AD-11A	15.85*15.85	9
CXB15	CXB1507、CXB1512、CXB1520	SL-CXA15-HD-A SL-HD-AA-11A SL-HD-AA-11B	SL-CXA15-HD-B	/	SL-HD-AD-11A	15.85*15.85	9
CXA18	CXA1816、CXA1820	SL-CXA18-HD-A	SL-CXA18-HD-B	/	SL-HD-AD-14A	17.85*17.85	12
CXB18	CXB1816、CXB1820	SL-CXA18-HD-A	SL-CXA18-HD-B	/	SL-HD-AD-14A	17.85*17.85	12
CXA1830	CXA1830	/	SL-CXA1830-HD-B	/	/	17.85*17.85	14
CXB1830	CXB1830	/	SL-CXA1830-HD-B	/	/	17.85*17.85	14
CXA25	CXA2520、CXA2530、CXA2540	SL-CXA2520-HD-A	SL-CXA25-HD-B	/	/	23.85*23.85	19
CXB25	CXB2530、CXB2540	SL-CXA2520-HD-A	SL-CXA25-HD-B	/	/	23.85*23.85	19

LUMINUS 朗明纳斯

	LED P/N	A HOLDER	B HOLDER	C HOLDER	D HOLDER	Dimensions	LES
CXM-3	AC4x	SL-blx C6-HD-A	SL-CLU700-HD-B	/	SL-HD-AD-09A	13.5*13.5	3.5
CXM-4	AC4x	SL-blx C6-HD-A	SL-CLU700-HD-B	/	SL-HD-AD-09A	13.5*13.5	4.5
CXM-6	AA02、AA3x	SL-CXM-6-HD-A	/	/	/	13*12	6.3
	AC3x、AC4x、PC32	SL-blx C6-HD-A SL-HD-AA-09A SL-HD-AA-09B	SL-CLU700-HD-B	SL-HD-AC-09A	SL-HD-AD-09A	13.5*13.5	6.3/6.5
CHM-6	XH2x、XH00	SL-blx C6-HD-A SL-HD-AA-09A SL-HD-AA-09B	SL-CLU700-HD-B	SL-HD-AC-09A	SL-HD-AD-09A	13.5*13.5	6.3
	AA0x、AA10	SL-CXM-6-HD-A	/	/	/	13*12	6.3
CXM-7	AA0x	SL-CXM-7-HD-A	/	/	/	13*13	7.5
CXM-9	AA00、AA10、AA3x、AA4x	SL-CXM-9-HD-A	SL-CXM-9-HD-B	/	SL-HD-AD-11B	15*15	9/9.8
	AC00、AC10、AC3x、AC4x、PC32	SL-CLL020-HD-A SL-HD-AA-12A SL-HD-AA-12B	SL-CLU020-HD-B	/	SL-HD-AD-12A	13.5*13.5	9/9.6/9.8
CHM-9	AA00、AA10、XD20、XD22	SL-CXM-9-HD-A	SL-CXM-9-HD-B	/	SL-HD-AD-11B	15*15	9/9.6
	AC00、AC10、AC3x	SL-CLL020-HD-A SL-HD-AA-12A SL-HD-AA-12B	SL-CLU020-HD-B	/	SL-HD-AD-12A	13.5*13.5	9/9.8
	XH2x	SL-CHM-14-HD-A	SL-CLU710-HD-B	/	SL-HD-AD-16A	19*19	9
CLM-9	AA00、AA3x	SL-CXM-9-HD-A	SL-CXM-9-HD-B	/	SL-HD-AD-11B	15*15	9/9.6
	AC00、AC3x、AC4x	SL-CLL020-HD-A SL-HD-AA-12A SL-HD-AA-12B	SL-CLU020-HD-B	/	SL-HD-AD-12A	13.5*13.5	9/9.6/9.8
CIM-9	AC3x、AC4x	SL-CLL020-HD-A	SL-CLU020-HD-B	/	SL-HD-AD-12A	13.5*13.5	9.6/9.8
CXM-11	AA3x、AA4x	SL-CXM-14-HD-A	SL-CXM-14-HD-B	/	/	18.5*18.5	11.6/11.9
	AC00、AC3x、PC32	SL-CHM-14-HD-A	SL-CLU720-HD-B	/	SL-HD-AD-16A	19*19	11/11.6/11.7
CHM-11	XH2x	SL-CHM-14-HD-A	SL-CLU720-HD-B	/	SL-HD-AD-16A	19*19	11
CXM-14	AA00、AA10	SL-CXM-14-HD-A	SL-CXM-14-HD-B	/	/	18.5*18.5	13.5
	AC00、AC10	SL-CHM-14-HD-A	SL-CHM-14-HD-B	/	SL-HD-AD-16A	19*19	13.5
	AA3x、AA4x	SL-CLL03X-HD-A2	SL-CXM-14-HD-B	/	/	18.5*18.5	14.3/14.5
	AC3x、AC4x	SL-CLL03X-HD-A2	SL-VestaTW13-HD-B	/	SL-HD-AD-16A	19*19	14.3/14.5
CHM-14	AA10	SL-CXM-14-HD-A	SL-CXM-14-HD-B	/	/	18.5*18.5	13.5
	AC10	SL-CHM-14-HD-A	SL-CHM-14-HD-B	/	SL-HD-AD-16A	19*19	13.5
	XH2x	/	SL-CLU730-HD-B	/	/	28*28	13.5
CLM-14	AA3x、AA4x	SL-CLL03X-HD-A2	SL-CXM-14-HD-B	/	/	18.5*18.5	14.3/14.5
	AC3x、AC4x	SL-CLL03X-HD-A2	SL-VestaTW13-HD-B	/	SL-HD-AD-16A	19*19	14.3/14.5
CIM-14	AC3x、AC4x	SL-CLL03X-HD-A2	SL-VestaTW13-HD-B	/	SL-HD-AD-16A	19*19	14.5
CGM-14	AC3x、AC4x	SL-CLL03X-HD-A2	SL-VestaTW13-HD-B	/	SL-HD-AD-16A	19*19	14.5
CXM-18	AA4x、AA02	SL-CXM-18-HD-A	SL-CXM-18-HD-B	/	/	21.5*21.5	17.5/18
CXM-22	AA4x、AA02	/	SL-CXM-22-HD-B	/	/	28*28	22
CHM-22	AA02	/	SL-CXM-22-HD-B	/	/	28*28	22
CIM-22	AA4x	/	SL-CXM-22-HD-B	/	/	28*28	22
CLM-22	AA4x、PC32	/	SL-CXM-22-HD-B	/	/	28*28	22
CGM-22	AA4x	/	SL-CXM-22-HD-B	/	/	28*28	22

	LED P/N	A HOLDER	B HOLDER	C HOLDER	D HOLDER	Dimensions	LES
CDM-6	DW01	/	SL-CDM/CTM-9-HD-B	/	/	15.25*12.25	6.8
CDM-9	DW01	/	SL-CDM/CTM-9-HD-B	/	/	15*12	9.5
CTM-9	TW01	/	SL-CDM/CTM-9-HD-B	/	/	15*12	9.5
CDM-14	DW01	/	SL-CDM/CTM-14-HD-B	/	/	24*20	15.5
CTM-14	TW01	/	SL-CDM/CTM-14-HD-B	/	/	24*20	14.5
CDM-18	DW01	/	SL-CDM/CTM-18-HD-B	/	/	24*20	16.8
CTM-18	TW01	/	SL-CDM/CTM-18-HD-B	/	/	24*20	17.5

LUMILEDS 亮锐(飞利浦)

	LED P/N	A HOLDER	B HOLDER	C HOLDER	D HOLDER	Dimensions	LES
1201	CertaFlux L06_G1/G2	SL-CXA13-HD-A	SL-CLU700-HD-B	/	SL-HD-AD-09A	13.35*13.35	5.5
	CertaFlux L04_G2	SL-blx C6-HD-A	SL-CLU700-HD-B	/	SL-HD-AD-09A	13.35*13.35	4.1
	Fortimo L09_G7N/G7N_HE	SL-CLL020-HD-A	SL-CLL02X-HD-B	/	SL-HD-AD-12A	13.5*13.5	9.8
1202	CertaFlux L09_G1/G2	SL-CXA15-HD-A	SL-CXA15-HD-B	/	SL-HD-AD-11A	15.85*15.85	8.5
	CertaFlux L06_G2	SL-CXA13-HD-A	SL-CLU700-HD-B	SL-HD-AC-09A	SL-HD-AD-09A	13.35*13.35	5.5
	Fortimo L09_G7N/G7N_HE	SL-CLL020-HD-A	SL-CLL02X-HD-B	/	SL-HD-AD-12A	13.5*13.5	9.8
1203	Fortimo L06_G7	SL-105A-HD-A	SL-MINI-HD-B	/	/	15*12	6.5
	CertaFlux L09_G1/G2	SL-CXA15-HD-A	SL-CXA15-HD-B	/	SL-HD-AD-11A	15.85*15.85	8.5
	Fortimo L09_G6、G7	SL-LHC1-1202-HD-A	SL-1916-14-HD-B	/	/	19*16	9
1204	Fortimo L09_G7N/G7N_HE	SL-CLL020-HD-A	SL-CLL02X-HD-B	/	SL-HD-AD-12A	13.5*13.5	9.8
	CertaFlux L12_G1/G2	SL-CXA18-HD-A	SL-CXA18-HD-B	/	SL-HD-AD-14A	17.85*17.85	12
	CertaFlux L09_G2	SL-CXA15-HD-A	SL-CXA15-HD-B	/	SL-HD-AD-11A	15.85*15.85	8.5
	Fortimo L09_G7	SL-LHC1-1202-HD-A	SL-1916-14-HD-B	/	/	19*16	9
1205	CertaFlux L12_G1/G2	SL-CXA18-HD-A	SL-CXA18-HD-B	/	SL-HD-AD-14A	17.85*17.85	12
	Fortimo L13_G6、G7	SL-LHC1-1204-HD-A	SL-LHC1-1208-HD-B	/	SL-HD-AD-18A	20*24	13
	Fortimo L15_G7N/G7N_HE	SL-CLL03X-HD-A2/ SL-CLL030-HD-A	SL-CLL03X-HD-B	/	SL-HD-AD-17A	19*19	14.5
1206	Fortimo L13_G7	SL-LHC1-1204-HD-A	SL-LHC1-1208-HD-B	/	SL-HD-AD-18A	20*24	13
	Fortimo L15_G7N/G7N_HE	SL-CLL03X-HD-A2/ SL-CLL030-HD-A	SL-CLL03X-HD-B	/	SL-HD-AD-17A	19*19	14.5
1208	CertaFlux L14_G1/G2	/	SL-CXA1830-HD-B	/	/	17.85*17.85	14
	Fortimo L15_G7N/G7N_HE	SL-CLL03X-HD-A2/ SL-CLL030-HD-A	SL-CLL03X-HD-B	/	SL-HD-AD-17A	19*19	14.5
	Fortimo L15_G6/G7	SL-LHC1-1208-HD-A	SL-LHC1-1208-HD-B	/	SL-HD-AD-18A	20*24	15
1210	Fortimo L15_G7N/G7N_HE	SL-CLL03X-HD-A2/ SL-CLL030-HD-A	SL-CLL03X-HD-B	/	SL-HD-AD-17A	19*19	14.5
1211	Fortimo L22_G7N/G7N_HE	/	SL-CXM-22-HD-B	/	/	28*28	22
	Fortimo L19_G6、G7	/	SL-CXM-22-HD-B	/	/	28*28	18.5
1212	Fortimo L22_G7N/G7N_HE	/	SL-CXM-22-HD-B	/	/	28*28	22
1216	Fortimo L22_G7N/G7N_HE	/	SL-CXM-22-HD-B	/	/	28*28	22

OSRAM 欧司朗

	LED P/N	A HOLDER	B HOLDER	C HOLDER	D HOLDER	Dimensions	LES
Soleriq S9	GEN3、GEN4	SL-CLL020-HD-A	SL-CLL02X-HD-B	/	SL-HD-AD-12A	13.5*13.5	9.8
Soleriq S13	GEN2、GEN3	SL-CHM-14-HD-A	SL-CHM-14-HD-B	/	SL-HD-AD-16A	19*19	13
Soleriq S15	GEN4	SL-CLL030-HD-A	SL-CLL03X-HD-B	/	SL-HD-AD-16A	19*19	14.7
Soleriq S19	GEN2	SL-CXA2520-HD-A	SL-S19-HD-B	/	/	24*24	17.8

NICHIA 日亚

	LED P/N	A HOLDER	B HOLDER	C HOLDER	D HOLDER	Dimensions	LES
NJCxS024Z	NJCWS024Z- NJCLS024Z	SL-MINI-HD-A	SL-MINI-HD-B	/	/	15*12	7
NJCxL024Z	NJCWL024Z	SL-LHC1-1202-HD-A	SL-1916-14-HD-B	/	SL-HD-AD-12B	19*16	7
NVCxL024Z	NVCWL024Z	SL-1916-14-HD-A	SL-1916-14-HD-B	/	/	19*16	11
NVExJ048Z	NVEWJ048Z- NVELJ048Z	SL-LHC1-1208-HD-A	SL-LHC1-1208-HD-B	/	SL-HD-AD-18A	24*17	14.6
NTCxS024B	NTCWS024B- NTCLS024B	SL-Philips105A-HD-A	SL-MINI-HD-B	/	/	15*12	6.7
NFCxS024B	NFCWS024B	SL-Philips105A-HD-A	SL-MINI-HD-B	/	/	15*12	6.7
NFCxL036B	NFCWL036B- NFCLL036B	SL-LHC1-1202-HD-A	SL-1916-HD-B	/	SL-HD-AD-12B	19*16	8.7
NFCxL060B	NFCWL060B- NFCLL060B	SL-1916-HD-A	SL-1916-HD-B	/	/	19*16	11.5
NFCxJ108B	NFCWJ108B- NFCLJ108B	SL-LHC1-1208-HD-A	SL-LHC1-1208-HD-B	/	SL-HD-AD-18A	24*19	14.6
NFDxJ130B	NFDWJ130B- NFDLJ130B	SL-LHC1-1208-HD-A	SL-LHC1-1208-HD-B	/	SL-HD-AD-18A	24*19	14.6

TRIDONIC 锐高

	LED P/N	A HOLDER	B HOLDER	C HOLDER	D HOLDER	Dimensions	LES
G4-10	/	SL-G4-10-HD-A	SL-G4-10-HD-B	/	SL-HD-AD-12A	/	8.5
G4-17	/	SL-CXM-18-HD-A	SL-G4-17-HD-B	/	/	/	17
G4-23	/	/	SL-G4-23HD-B	/	/	/	23
SLE G7 9mm	/	SL-CLL020-HD-A	SL-CLL02X-HD-B	/	SL-HD-AD-12A	13.5*13.5	9
SLE G7 13mm	/	SL-CHM-14-HD-A	SL-CHM-14-HD-B	/	SL-HD-AD-16A	19*19	13
SLE G7 15mm	/	SL-CLL03X-HD-A2/S L-CLL030-HD-A	SL-CLL03X-HD-B	/	SL-HD-AD-17A	19*19	15

LUMENS 流明

	LED P/N	A HOLDER	B HOLDER	C HOLDER	D HOLDER	Dimensions	LES
EDC-38C	/	/	SL-EDC-38C-HD-B	/	/	/	9.8
EDC-47C	/	/	SL-EDC-47C-HD-B	/	/	/	12.2
EDC-57C-20	/	/	SL-EDC-57C-20-HD-B	/	/	/	13.2
EDC-57C-30	/	/	SL-EDC-57C-30-HD-B	/	/	/	20.1

SAMSUNG 三星

	LED P/N	A HOLDER	B HOLDER	C HOLDER	D HOLDER	Dimensions	LES
LC010C	Gen2	SL-bix C6-HD-A	SL-CLU700-HD-B	SL-HD-AC-09A	SL-HD-AD-09A	13.5*13.5	6
LC020C	Gen2	/	SL-CLU710-HD-B	/	/	19*19	8.5
LC040C	Gen2	SL-CHM-14-HD-A	SL-CLU720-HD-B	/	SL-HD-AD-16A	19*19	11.5
LC006B	Gen3	SL-CLL020-HD-A	SL-V10-HD-B	/	SL-HD-AD-12A	13.5*13.5	8
LC026B	Gen3	SL-CXM-18-HD-A	SL-CXM-18-HD-B	/	/	21.5*21.5	17
LC033B	Gen3	SL-CXM-18-HD-A	SL-CXM-18-HD-B	/	/	21.5*21.5	17

XICATO

	LED P/N	A HOLDER	B HOLDER	C HOLDER	D HOLDER	Dimensions	LES
XTM-9	/	/	SL-XTM-19-HD-B	/	/	/	9
XTM-19	/	/	SL-XTM-19-HD-B	/	/	/	24

无主灯照明-小射灯、天花灯
搭配SL-VI达到超高防眩效果

Non Major Lighting – Spot Light, Ceiling Light
Match with SL-VI to Achieve the Best Anti Glare Effect

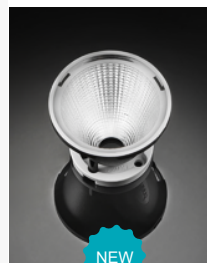


Optical Lens
光学镜片

Low Glare
低眩光

Non Conductive
防导电

COB Holder
AA支架



SL-030A

Vaccum Aluminum Plating PC
真空镀铝

Φ:30.0mm H:26.15mm Φ:7.8mm

Code 型号	Typ.FWHM 标准角度	Typ.eff 标准效率
SL-03018A	19°	86%
SL-03024A	28°	87%
SL-03036A	38°	87%

CLU701
CLU0B0
CXM-6
CHM-6
CXA13
V6 HD
E6 CA

镜片/COVER:
SL-030-MIX-LENS-C



SL-035C

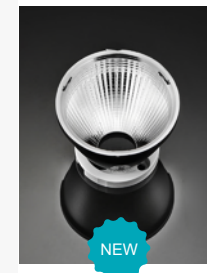
Vaccum Aluminum Plating PC
真空镀铝

Φ:35.0mm H:26.4mm Φ:7.8mm

Code 型号	Typ.FWHM 标准角度	Typ.eff 标准效率
SL-03518C	19°	86%
SL-03524C	27°	87%
SL-03536C	38°	87%

CLU701
CLU0B0
CXM-6
CHM-6
CXA13
V6 HD
blx C6
E6 CA

镜片/COVER:
SL-035-MIX-LENS-C



SL-035D

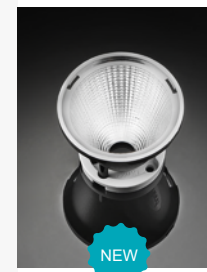
Vaccum Aluminum Plating PC
真空镀铝

Φ:35.0mm H:26.4mm Φ:11.6mm

Code 型号	Typ.FWHM 标准角度	Typ.eff 标准效率
SL-03524D	25°	89%
SL-03536D	38°	89%

CLU028
CXM-9
CHM-9
CXA15
blx C8
E8 CA

镜片/COVER:
SL-035-MIX-LENS-C



SL-045D

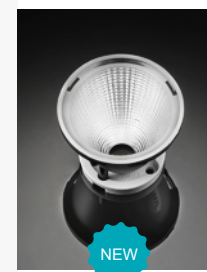
Vaccum Aluminum Plating PC
真空镀铝

Φ:45.0mm H:36.7mm Φ:11.4mm

Code 型号	Typ.FWHM 标准角度	Typ.eff 标准效率
SL-04518D	16°-19°	85%
SL-04524D	23°-27°	85%
SL-04536D	37°-40°	85%

CLU028
CXM-9
CXA15
V10 Gen7
V10 Gen8
E8 CA

镜片/COVER:
SL-045-MIX-LENS-C



SL-050E

Vaccum Aluminum Plating PC
真空镀铝

Φ:50.0mm H:41.45mm Φ:11.6mm

Code 型号	Typ.FWHM 标准角度	Typ.eff 标准效率
SL-05018E	16°-19°	85%
SL-05024E	24°-28°	85%
SL-05036E	36°-39°	85%

CLU028
CXM-9
CXA15
V10 Gen7
V10 Gen8
E8 CA

镜片/COVER:
SL-050-MIX-LENS-C

I

SL
REFLECTOR

经典畅销系列

HOT
SALE高效率反光杯
尺寸角度齐全
通用性强High Efficiency (> 90%)
Complete Size&Beam Angle,
High Compatibility

SL-RF-AA-022A

Vaccum Aluminum Plating PC

Φ:22.0mm H:14.0mm Φ:8.0mm

真空镀铝

Code 型号	Typ.FWHM 标准角度	Typ.eff 标准效率
SL-RF-AA-022A-M	17° (配CXM-3) / 24°	89%
SL-RF-AA-022A-F	36°	89%

CLU701
CLU0B0
CXM-3
CXM-6
CHM-6
CXA13
V4 HD
V6 HD
VestaTW6
blx C6



SL-035A

Vaccum Aluminum Plating PC

Φ:35.0mm H:21.5mm Φ:8.5mm

真空镀铝

Code 型号	Typ.FWHM 标准角度	Typ.eff 标准效率
SL-03515A	15°	90%
SL-03524A	24°	90%
SL-03536A	36°	90%

CLU701
CXM-6
CHM-6
CXA13
V6
blx C6
VestaTW6

LC010C
NJCxS024Z
NTCxS024B



SL-035B

Vaccum Aluminum Plating PC

Φ:35.0mm H:17.6mm Φ:11.4mm

真空镀铝

Code 型号	Typ.FWHM 标准角度	Typ.eff 标准效率
SL-03520B	20°	91%
SL-03540B	40°	91%
SL-03560B	60°	91%

CLU028
CXM-9
CHM-9
CXA15
V10 Gen6
V10 Gen7
blx C8
E8
VestaTW6
105
1202/1203

G4-10
LC020C
LC006B
EDC-38C
NFCxL036B



SL-044A

Vaccum Aluminum Plating PC

Φ:44.0mm H:20.2mm Φ:8.5mm

真空镀铝

Code 型号	Typ.FWHM 标准角度	Typ.eff 标准效率
SL-04413A	13°	93%
SL-04425A	25°	93%
SL-04438A	38°	93%

CLU701
CXM-6
CHM-6
CXA13
V6
blx C6
VestaTW6

LC010C
NJCxS024Z
NJCxS024B



SL-044B

Vaccum Aluminum Plating PC
真空镀铝

Φ:44.0mm H:20.2mm Φ:11.5mm

Code 型号	Typ.FWHM 标准角度	Typ.eff 标准效率
SL-04415B	15°	93%
SL-04425B	25°	93%
SL-04438B	38°	93%
SL-04460B	60°	93%

CLU028
CXM-9
CHM-9
CXA15
V10 Gen6
V10 Gen7
blx C8
E8
Vesta TW6
Soleriq S9
105
1202/1203

G4-10
LC020C
LC006B
EDC-38C
NFCxL036B



SL-045C

Vaccum Aluminum Plating PC
真空镀铝

Φ:45.0mm H:20.1mm Φ:19.0mm

Code 型号	Typ.FWHM 标准角度	Typ.eff 标准效率
SL-04524C	24°	91%
SL-04550C	50°	91%

CLU038
CLU721
CXM-18
CXA25
V18 Gen6
V18 Gen7
Vero18
Soleriq S19
1208
XTM-19
LC026B
LC033B

EDC-57C-20
EDC-57C-30
NVCxL024Z
NVExH048Z
NFCxL060B
NFCxJ108B
NFDxJ130B



SL-044C

Vaccum Aluminum Plating PC
真空镀铝

Φ:44.0mm H:20.2mm Φ:11.5mm

Code 型号	Typ.FWHM 标准角度	Typ.eff 标准效率
SL-04416C	15°	93%
SL-04426C	25°	93%
SL-04438C	38°	93%
SL-04460C	60°	93%

Vero 10



SL-050A

Vaccum Aluminum Plating PC
真空镀铝

Φ:50.0mm H:35.1mm Φ:11.5mm

Code 型号	Typ.FWHM 标准角度	Typ.eff 标准效率
SL-05015A	15°	90%
SL-05024A	24°	90%
SL-05038A	38°	90%
SL-05060A	60°	90%

CLU028
CXM-9
CHM-9
CXA15
V10 Gen6
V10 Gen7
blx C8
E8
Soleriq S8
Soleriq S9
Soleriq S10
105
1202/1203

G4-10
LC020C
LC006B
EDC-38C
NFCxL036B



SL-045A

Vaccum Aluminum Plating PC
真空镀铝

Φ:45.0mm H:34.1mm Φ:12.0mm

Code 型号	Typ.FWHM 标准角度	Typ.eff 标准效率
SL-04515A	15°	90%
SL-04524A	24°	90%
SL-04538A	38°	90%

CLU028
CXM-9
CHM-9
CXA15
V10 Gen6
V10 Gen7
blx C8
E8
Soleriq S9
105
1202/1203

G4-10
LC020C
LC006B
EDC-38C
NFCxL036B



SL-050B

Vaccum Aluminum Plating PC
真空镀铝

Φ:50.0mm H:35.1mm Φ:11.5mm

Code 型号	Typ.FWHM 标准角度	Typ.eff 标准效率
SL-05015B	15°	90%
SL-05024B	24°	90%
SL-05038B	38°	90%
SL-05060B	60°	90%

Vero10



SL-045B

Vaccum Aluminum Plating PC
真空镀铝

Φ:45.0mm H:20.1mm Φ:19.0mm

Code 型号	Typ.FWHM 标准角度	Typ.eff 标准效率
SL-04524B	24°	91%
SL-04550B	50°	91%

CLU038
MEGA
E13
NVExJ048Z
NFCxJ108B
NFDxJ130B



SL-050C

Vaccum Aluminum Plating PC
真空镀铝

Φ:50.0mm H:35.1mm Φ:14.5mm

Code 型号	Typ.FWHM 标准角度	Typ.eff 标准效率
SL-05020C	20°	90%
SL-05030C	30°	90%

CLU721
CXM-14
CHM-14
CXA18
Vero13
V13 Gen6
1204/1205
LC020C
LC040C

EDC-47C
EDC-57C-20
NVCxL024Z
NFCxL060B



SL-050D

Vaccum Aluminum Plating PC
真空镀铝

Φ:50.0mm H:35.1mm Φ:11.5mm

Code 型号	Typ.FWHM 标准角度	Typ.eff 标准效率
SL-05015D	15°	90%
SL-05024D	24°	90%
SL-05038D	38°	90%
SL-05060D	60°	90%

CLU028
CXM-9
CHM-9
CXA15
V10 Gen6
V10 Gen7
blk C8
E8
Soleriq S8
Soleriq S9
Soleriq S10
105
1202/1203

G4-10
LC020C
LC006B
EDC-38C
NFCxL036B



SL-075A

Vaccum Aluminum Plating PC
真空镀铝

Φ:75.0mm H:54mm Φ:18.0mm

Code 型号	Typ.FWHM 标准角度	Typ.eff 标准效率
SL-07515A	15°	91%
SL-07524A	24°	91%
SL-07538A	38°	91%
SL-07555A	55°	91%

CLU038
E13
NVExJ048Z
NFCxJ108B
NFDxJ130B



SL-069A

Vaccum Aluminum Plating PC
真空镀铝

Φ:69.0mm H:46mm Φ:18.0mm

Code 型号	Typ.FWHM 标准角度	Typ.eff 标准效率
SL-06915A	15°	91%
SL-06924A	24°	91%
SL-06938A	38°	91%

CLU038
E13
NVExJ048Z
NFCxJ108B
NFDxJ130B



SL-075B

Vaccum Aluminum Plating PC
真空镀铝

Φ:75.0mm H:53.5mm Φ:19.3mm

Code 型号	Typ.FWHM 标准角度	Typ.eff 标准效率
SL-07518B	18°	91%
SL-07526B	26°	91%
SL-07538B	38°	91%
SL-07555B	55°	91%

CXM-18
Vero18
V15 Gen6
V18 Gen6
1208
XTM-19
LC026B
LC033B
EDC-57C-30



SL-069B

Vaccum Aluminum Plating PC
真空镀铝

Φ:69.0mm H:45.5mm Φ:19.3mm

Code 型号	Typ.FWHM 标准角度	Typ.eff 标准效率
SL-06918B	18°	91%
SL-06928B	28°	91%
SL-06942B	42°	91%

CXM-18
Vero18
V15 Gen6
V18 Gen6
1208
Soleriq S19
XTM-19
LC026B
LC033B
EDC-57C-30



SL-075C

Vaccum Aluminum Plating PC
真空镀铝

Φ:75.0mm H:53.5mm Φ:14.5mm

Code 型号	Typ.FWHM 标准角度	Typ.eff 标准效率
SL-07515C	15°	90%
SL-07524C	24°	90%
SL-07538C	38°	90%
SL-07555C	55°	90%

CXM-14
CHM-14
CXA18
V13 Gen6
Vero13
1204/1205
LC020C
LC040C
EDC-47C
EDC-57C-20
NVCxL024Z
NFCxL060B



SL-069E

Vaccum Aluminum Plating PC
真空镀铝

Φ:69.0mm H:45.5mm Φ:14.5mm

Code 型号	Typ.FWHM 标准角度	Typ.eff 标准效率
SL-06916E	16°	91%
SL-06924E	24°	91%
SL-06938E	38°	91%

CXM-14
CHM-14
CXA18
V13 Gen6
Vero13
1204/1205
LC020C
LC040C
EDC-47C
EDC-57C-20

NVCxL024Z
NFCxL060B



SL-075F

Vaccum Aluminum Plating PC
真空镀铝

Φ:75.0mm H:39.0mm Φ:15.0mm

Code 型号	Typ.FWHM 标准角度	Typ.eff 标准效率
SL-07515F	15°	90%
SL-07530F	30°	90%
SL-07545F	45°	90%

CXM-14
CHM-14
CXA18
V13 Gen6
Vero13
1204/1205
LC040C
EDC-47C
EDC-57C-20

NVCxL024Z
NFCxL060B



SL-095A

Φ:95.0mm H:64mm Φ:18.0mm
Vaccum Aluminum Plating PC
真空镀铝

Code 型号	Typ.FWHM 标准角度	Typ.eff 标准效率
SL-09512A	12°	91%
SL-09524A	24°	91%
SL-09538A	38°	91%

CLU038
E13
NVExJ048Z
NFCxJ108B
NFDxJ130B



SL-095B

Φ:95.0mm H:63.5mm Φ:19.3mm
Vaccum Aluminum Plating PC
真空镀铝

Code 型号	Typ.FWHM 标准角度	Typ.eff 标准效率
SL-09515B	15°	91%
SL-09524B	24°	91%
SL-09538B	38°	91%

CXM-18
Vero18
V15 Gen6
V18 Gen6
XTM-19
1208
LC026B
LC033B
EDC-57C-30

SL-PL-AG
TIR LENS

SL-D
TIR LENS

SL-B
ODR LENS

SL-A
REFLECTOR WITH LENS



KA · 商超

Applications: Lighting in Shopping Malls and Supermarket



EACH RAY IS BRIGHTER IN SHINLAND
www.shinland.com.cn

SL-A Reflector with dome / Reflector

反光杯加凸透镜 的主副光斑过渡均匀 单反光杯 效率高

Reflector with dome, improve light pattern
uniformity. Single reflector High efficiency (> 90%)



SL-A-050J

Φ:50.0mm H:23.3mm Φ:21.6mm



DOME

SL-A-050J-LENS
凸透镜

COVER

SL-050-CLEAR LENS
透明镜片
SL-050-MIX-LENS-A
磨砂镜片

Code 型号	Typ.FWHM 标准角度	Typ.eff 标准效率
SL-A-050J-S	16°- 22°	87%
SL-A-050J-M	22°- 32°	88%
SL-A-050J-L	38°- 40°	88%

COB LES 6-11mm

SL-050K

Φ:50.0mm H:22.7mm Φ:20.0mm



COVER

SL-050-CLEAR LENS
透明镜片

SL-050-MIX-LENS-A
磨砂镜片

Code 型号	Typ.FWHM 标准角度	Typ.eff 标准效率
SL-050K-S	11°- 24°	91%
SL-050K-M	22°- 30°	91%
SL-050K-F	38°- 51°	90%
SL-050K-L	47°- 50°	91%

COB LES 6-18mm

SL-A-062B

Φ:62.0mm H:31.3mm Φ:25.1mm



DOME

SL-A-062B-LENS
凸透镜

COVER

SL-062-CLEAR LENS
透明镜片
SL-062-MIX-LENS-A
磨砂镜片

Code 型号	Typ.FWHM 标准角度	Typ.eff 标准效率
SL-A-062B-S	15°- 17°	83%
SL-A-062B-M	20°- 25°	83%
SL-A-062B-L	32°- 38°	83%

COB LES 6-14mm

SL-062A

Φ:62.0mm H:30.6mm Φ:20.0mm



COVER

SL-062-CLEAR LENS
透明镜片
SL-062-MIX-LENS-A
磨砂镜片

Code 型号	Typ.FWHM 标准角度	Typ.eff 标准效率
SL-062A-S	13°- 15°	93%
SL-062A-M	22°- 24°	93%
SL-062A-L	35°- 38°	93%
SL-062A-W	55°- 60°	93%

COB LES 6-14mm

SL-A-069C

Φ:69.0mm H:35.2mm Φ:28.4mm



DOME

SL-A-069C-LENS
凸透镜

COVER

SL-069-CLEAR LENS
透明镜片
SL-069-MIX-LENS-A
磨砂镜片
SL-069-M / F / WOF / FSQ
/ WW-LENS-B 异形镜片

Code 型号	Typ.FWHM 标准角度	Typ.eff 标准效率
SL-A-069C-S	14°- 20°	87%
SL-A-069C-M	27°- 30°	88%
SL-A-069C-L	37°- 40°	88%

COB LES 6-16mm

SL-069D

Φ:69.0mm H:34.2mm Φ:23.6mm



COVER

SL-069-CLEAR LENS
透明镜片
SL-069-MIX-LENS-A
磨砂镜片
SL-069-M / F /
WOF / FSQ
/ WW-LENS-B
异形镜片

Code 型号	Typ.FWHM 标准角度	Typ.eff 标准效率
SL-069D-S	8°- 23°	91%
SL-069D-M	26°- 29°	92%
SL-069D-L	38°- 42°	92%
SL-069D-W	55°- 60°	92%

COB LES 6-20mm

灯珠的操作功率与光学器件的使用温度以整灯实测为主

The power usage of the COB and temperature of the optical components
are based on the actual testing of the luminaire.

SL-A-075E

Φ:75.0mm H:41.7mm Φ:28.4mm



DOME

SL-A-075E-LENS
凸透镜

COVER

SL-075-CLEAR LENS
透明镜片
SL-075-MIX-LENS-A
磨砂镜片
SL-075-M / F / MOF /
WOF / FSQ /
WW-LENS-B 异形镜片

Code 型号	Typ.FWHM 标准角度	Typ.eff 标准效率
SL-A-075E-S	13°- 19°	87%
SL-A-075E-M	28°- 29°	89%
SL-A-075E-L	34°- 39°	89%
SL-A-07565-N2	60°-65°	89%

COB LES 6-16.5mm

SL-075I

Φ:75.0mm H:41.0mm Φ:23.6mm



COVER

SL-075-CLEAR LENS
透明镜片
SL-075-MIX-LENS-A
磨砂镜片
SL-075-M / F / MOF /
WOF / FSQ /
WW-LENS-B 异形镜片

Code 型号	Typ.FWHM 标准角度	Typ.eff 标准效率
SL-075I-S	10°- 21°	90%
SL-075I-M	25°- 27°	91%
SL-075I-L	38°- 41°	91%
SL-075I-W	58°- 62°	92%

COB LES 6-20mm

SL-A-092C

Φ:92.0mm H:46.2mm Φ:31.0mm



DOME

SL-A-092C-LENS
凸透镜

COVER

SL-092-CLEAR LENS
透明镜片
SL-092-MIX-LENS-A
磨砂镜片
SL-092-M / F / WOF / FSQ /
WW-LENS-B 异形镜片

Code 型号	Typ.FWHM 标准角度	Typ.eff 标准效率
SL-A-092C-S	11°- 15°	86%
SL-A-092C-M	22°- 24°	87%
SL-A-092C-L	37°- 40°	87%

COB LES 9-17.5mm

SL-092D

Φ:92.0mm H:45.5mm Φ:25.7mm



COVER

SL-092-CLEAR LENS
透明镜片
SL-092-MIX-LENS-A
磨砂镜片
SL-092-M / F / WOF /
FSQ / WW-LENS-B
异形镜片

Code 型号	Typ.FWHM 标准角度	Typ.eff 标准效率
SL-092D-S	8°- 12°	90%
SL-092D-M	21°- 22°	91%
SL-092D-L	38°- 42°	93%
SL-092D-W	57°- 60°	91%

COB LES 9-20mm

SL-A-085A

Φ:85.0mm H:42.7mm Φ:31.0mm



DOME

SL-A-085A-LENS
凸透镜

COVER

SL-085-CLEAR LENS
透明镜片
SL-085-MIX-LENS-A
磨砂镜片

Code 型号	Typ.FWHM 标准角度	Typ.eff 标准效率
SL-A-085A-S	13°- 17°	87%
SL-A-085A-M	23°- 25°	88%
SL-A-085A-L	37°- 40°	88%

COB LES 9-18mm

SL-085B

Φ:85.0mm H:42.0mm Φ:25.5mm



COVER

SL-085-CLEAR LENS
透明镜片
SL-085-MIX-LENS-A
磨砂镜片

Code 型号	Typ.FWHM 标准角度	Typ.eff 标准效率
SL-085B-S	9°- 18°	90%
SL-085B-M	22°- 24°	92%
SL-085B-L	35°- 40°	93%
SL-085B-W	56°- 61°	93%

COB LES 9-20mm

SL-A-110A

Φ:110.0mm H:53.7mm Φ:31.0mm



DOME

SL-A-110A-LENS
凸透镜

COVER

SL-110-CLEAR LENS
透明镜片
SL-110-MIX-LENS-A
磨砂镜片

Code 型号	Typ.FWHM 标准角度	Typ.eff 标准效率
SL-A-110A-S	9°-15°	84%
SL-A-110A-M	22°-24°	85%
SL-A-110A-L	35°-40°	85%

COB LES 9-20mm

SL-110B

Φ:110.0mm H:53.6mm Φ:25.6mm



COVER

SL-110-CLEAR LENS
透明镜片
SL-110-MIX-LENS-A
磨砂镜片

Code 型号	Typ.FWHM 标准角度	Typ.eff 标准效率
SL-110B-S	8°-12°	90%
SL-110B-M	22°- 25°	91%
SL-110B-L	38°- 42°	91%
SL-110B-W	57°- 63°	87%

COB LES 9-20mm



灯珠的操作功率与光学器件的使用温度以整灯实测为主

The power usage of the COB and temperature of the optical components are based on the actual testing of the luminaire.

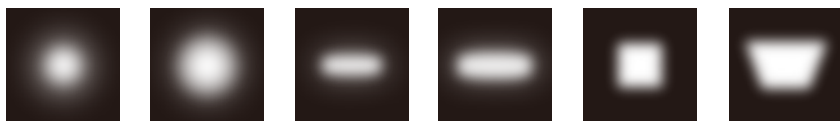


II

SL-B
ODR
LENS



小角度可搭配多种异形光斑镜片
Many Kinds of Beam Shape Modification as Accessory



M F MOF WOF FSQ WW

II

SL-B
ODR
LENS

超薄结构设计
Ultra thin Structure



SL-B-045BA

Φ:45.0mm H:11.0mm Φ:8.0mm

Code 型号	Typ.FWHM 标准角度	Typ.eff 标准效率
SL-B-045BA-S	11°	82%

[CLU701](#)
[CXM-6](#)
[CHM-6](#)
[CXM-7](#)
[CXA13](#)
[V6](#)
[blx C6](#)
[105](#)
[LC010C](#)

异形镜片
Different Optical Cover

SL-045-M-LENS-B
 SL-045-F-LENS-B
 SL-045-WOF-LENS-B
 SL-045-FSQ-LENS-B



SL-B-069BA

Φ:69.0mm H:16.5mm Φ:12.0mm

Code 型号	Typ.FWHM 标准角度	Typ.eff 标准效率
SL-B-069BA-S	11°	82%

[CLU028](#)
[CXM-9](#)
[CHM-9](#)
[CXA15](#)
[V10 Gen6](#)
[V10 Gen7](#)
[E8](#)
[blx C8](#)
[Soleriq S9](#)

[105](#)
[1202/1203](#)
[G4-10](#)
[LC020C](#)
[LC006B](#)
[NJCxS024Z](#)
[NTCxS024B](#)
[NFCxL036B](#)

异形镜片
Different Optical Cover

SL-069-M-LENS-B
 SL-069-F-LENS-B
 SL-069-WOF-LENS-B
 SL-069-FSQ-LENS-B
 SL-069-WW-LENS-B



SL-B-075BA

Φ:74.7mm H:17.5mm Φ:12.0mm

Code 型号	Typ.FWHM 标准角度	Typ.eff 标准效率
SL-B-075BA-S	11°	87%
SL-B-075BA-M	22°	85%

- CLU028
- CXM-9
- CHM-9
- CXA15
- V10 Gen6
- V10 Gen7
- E8
- blx C8
- Soleriq S9
- 105
- 1202/1203
- G4-10
- LC020C
- LC006B
- NJCxS024Z
- NTCxS024B
- NFCxL036B

异形镜片
Different Optical Cover
SL-075-M-LENS-B
SL-075-F-LENS-B
SL-075-MOF-LENS-B
SL-075-WOF-LENS-B
SL-075-FSQ-LENS-B
SL-075-WW-LENS-B



SL-B-075BB

Φ:74.7mm H:17.5mm Φ:14.0mm

Code 型号	Typ.FWHM 标准角度	Typ.eff 标准效率
SL-B-075BB-S	14°	82%
SL-B-075BB-M	22°	84%

- CXA18
- Vero 13
- LC040C
- NFCWL060B
- NFCLL060B
- NVCWL024Z
- NVCLL024Z

异形镜片
Different Optical Cover
SL-075-M-LENS-B
SL-075-F-LENS-B
SL-075-MOF-LENS-B
SL-075-WOF-LENS-B
SL-075-FSQ-LENS-B
SL-075-WW-LENS-B



SL-B-085BA

Φ:85.0mm H:18.1mm Φ:16.0mm

Code 型号	Typ.FWHM 标准角度	Typ.eff 标准效率
SL-B-085BA-S	13°	85%
SL-B-085BA-M	22°	85%

- CLU038
- 1208
- G4-17
- E13
- LC026B
- LC033B
- NVEXJ048Z
- NFCxJ108B

异形镜片
Different Optical Cover
SL-092-M-LENS-B
SL-092-F-LENS-B
SL-092-WOF-LENS-B
SL-092-FSQ-LENS-B
SL-092-WW-LENS-B



SL-B-092BA

Φ:92.0mm H:20.0mm Φ:17.4mm

Code 型号	Typ.FWHM 标准角度	Typ.eff 标准效率
SL-B-092BA-S	13°	82%

- CLU038
- 1208
- E13
- LC026B
- LC033B
- NVEXJ048Z
- NFCxJ108B

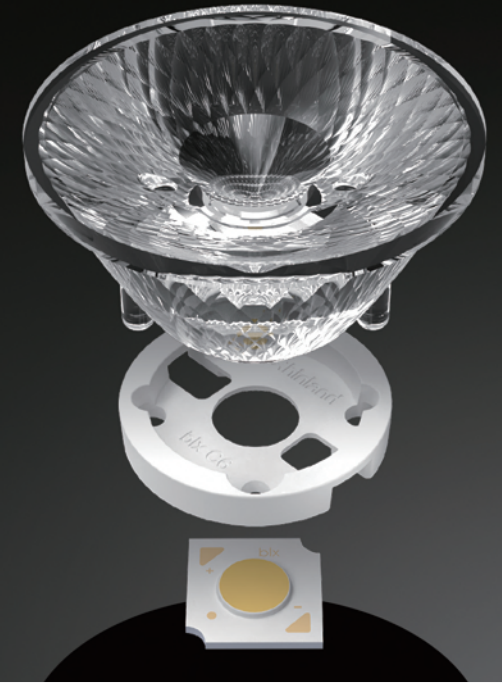
异形镜片
Different Optical Cover
SL-092-M-LENS-B
SL-092-F-LENS-B
SL-092-WOF-LENS-B
SL-092-FSQ-LENS-B
SL-092-WW-LENS-B

II

SL-D TIR LENS

超强控光能力
K值高

Strong in Light Control,
High Central Intensity



SL-D-035DA

Φ:35.0mm H:17.6 Φ:12.0mm

Code 型号	Typ.FWHM 标准角度	Typ.eff 标准效率
SL-D-035DA-S	15°- 26°	71%
SL-D-035DA-M	22°- 28°	87%
SL-D-035DA-F	36°- 40°	87%

- CLU028
- CLU701
- CLU0B0
- CXA13
- CXB13
- CXA15
- CXB15
- blx C6
- blx C8
- LC010C
- NJCxS024Z
- NTCxS024B



SL-D-044DA

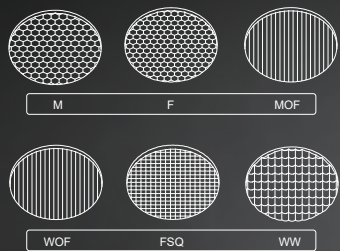
Φ:44.0mm H:20.2 Φ:11.8mm

Code 型号	Typ.FWHM 标准角度	Typ.eff 标准效率
SL-D-044DA-S	15°- 19°	72%
SL-D-044DA-M	22°- 25°	86%
SL-D-044DA-F	31°- 36°	86%

- CLU028
- CLU701
- CLU0B0
- CXA13
- CXA15
- CXM-6
- CHM-6
- CXM-9
- CHM-9
- V8
- V10 Gen6
- V10 Gen7
- blx C6
- blx C8
- Soleriq S9
- 105
- 1202/1203
- G4-10
- LC020C
- LC006B
- EDC-38C
- NFCxL036B

II

SL-D
TIR
LENS



SL-D-050DA

Φ:49.6mm H:21.6 Φ:21.5mm

Code 型号	Typ.FWHM 标准角度	Typ.eff 标准效率
SL-D-050DA-S	17°	94%
SL-D-050DA-M	24°	93%
SL-D-050DA-F	36°	90%

- CLU028 E8
- CLU701 105
- CLU711 1202/1203
- CXM-6 G4-10
- CHM-6 Soleriq S8
- CXM-7 LC010C
- CXM-9 LC020C
- CHM-9 LC006B
- CXA13 XTM-9
- CXA15 NJCxS024Z
- V10 Gen6 NTCxS024B
- V10 Gen7 NFCxL036B



SL-D-075DA

Φ:75.0mm H:33.0mm Φ:26.7mm

Code 型号	Typ.FWHM 标准角度	Typ.eff 标准效率
SL-D-075DA-S	15°	90%
SL-D-075DA-M	24°	90%
SL-D-075DA-F	38°	90%

★ 小角度可搭配异形镜片
Many Kinds of Beam Shape Modification as Accessory

- CLU028 V13 Gen7 G4-17
- CLU038 V15 Gen6 G4-10
- CLU711 V18 Gen6 XTM-9
- CLU721 Vero 13 EDC-38C
- CLU731 Vero 18 EDC-47C
- CXM-9 E8 EDC-57C-20
- CXM-14 E13 NFWL060B
- CXM-18 Soleriq13 NFCLL060B
- CHM-9 1204/1205 NVCWL024Z
- CHM-14 1208 NVCLL024Z
- CXA15 LC020C NFWJ108B
- CXA18 LC040C NFCLJ108B
- CXA1830 LC026B NVExJ048Z
- V13 Gen6 LC033B

II

SL-PL-AG
TIR

超强控光能力
可搭配多种防眩罩减少眩光

Strong in Light Control
Can Match with Different Anti Glare Trim to
Reduce Glare Rays



SL-PL-AG-020A

Φ:20.0mm H:15.0mm Φ:4.0mm

Code 型号	Typ.FWHM 标准角度	Typ.eff 标准效率
SL-PL-AG-020A-S	15°	90%
SL-PL-AG-020A-M	24°	90%

- XP-E
- XP-G
- XP-E2
- XP-G2/3
- XHP35-HI

HOLDER
SL-HD-AE-022A
SL-HD-AE-022B



SL-PL-AG-028A

Φ:28.0mm H:15.0mm Φ:8.2mm

Code 型号	Typ.FWHM 标准角度	Typ.eff 标准效率
SL-PL-AG-028A-S	19°	88%
SL-PL-AG-028A-M	24°	88%
SL-PL-AG-028A-F	37°	88%

- CLU701
- CLU0B0
- CXM-6
- CHM-6
- CXA13
- V4 HD
- V6 HD
- blx C6



SL-PL-AG-035A

Φ:35.0mm H:18.5mm Φ:11.4mm

Code 型号	Typ.FWHM 标准角度	Typ.eff 标准效率
SL-PL-AG-035A-S	18°	85%
SL-PL-AG-035A-M	24°	88%
SL-PL-AG-035A-F	34°	88%

- CLU028
- CLU701
- CLU0B0
- CXM-6
- CHM-6
- CXA13
- CXB13
- CXA15
- CXB15
- E6
- E8
- blx C6
- blx C8



SL-PL-AG-045A

Φ:45.0mm H:25.3mm Φ:11.4mm

Code 型号	Typ.FWHM 标准角度	Typ.eff 标准效率
SL-PL-AG-045A-S	18°	82%
SL-PL-AG-045A-M	24°	82%
SL-PL-AG-045A-F	36°	82%

- CLU028
- CHM-9
- CXM-9
- CXA15
- V10 Gen6
- V10 Gen7
- blx C8
- 1202/1203
- Soleriq S9
- NFCWL036B
- NFCCLL036N



DARK
LIGHT
REFLECTOR

DARK
LIGHT
REFLECTOR
WITH
DOME



打造高端酒店照明设计
搭配SL-IV系列达到超高防眩效果

With SL-IV Series to Achieve The Best Anti-Glare Results



高中心光强
Light with Highly Centered Intensity



旋扣结构
Twist and Lock Structure



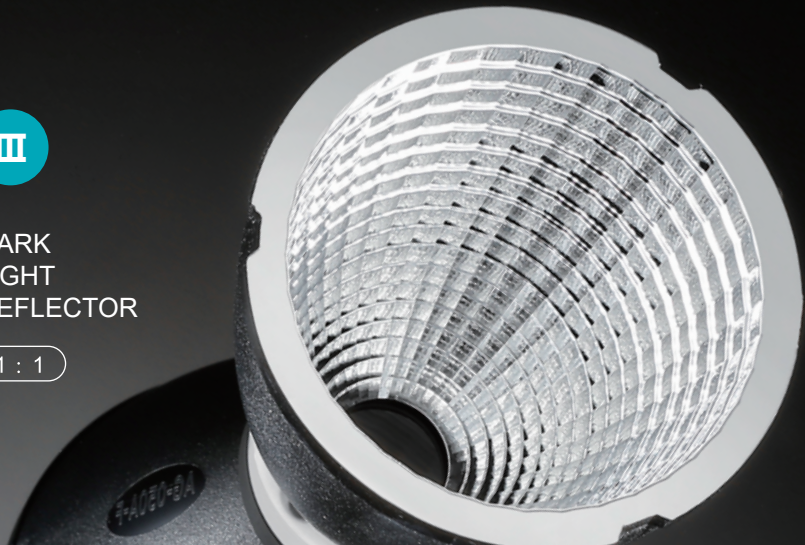
光斑截止清晰
Clear in Light Pattern

深防眩UGR < 12

III

DARK LIGHT REFLECTOR

1 : 1



SL-RF-AG-035A

Φ:35.0mm H:35.0mm Φ:8.0mm

Code 型号	Typ.FWHM 标准角度	Typ.eff 标准效率
SL-RF-AG-035A-S	18°	81%
SL-RF-AG-035A-M	25°	84%
SL-RF-AG-035A-F	35°	84%

- CLU701
- CLU0A0
- CLU0B0
- CXM-6
- CXM-7
- CHM-6
- CLM-6
- CXA13
- CXB13
- LC010C
- blx C6
- VestaTW6

COVER

- SL-PL-AE-035A
透明镜片
- SL-PL-AE-035B
磨砂镜片
- SL-PL-AE-035C
淡磨砂镜片

III

DARK LIGHT REFLECTOR

1 : 0.8



SL-RF-AG-028B

Φ:28.0mm H:22.4mm Φ:8.0mm

Code 型号	Typ.FWHM 标准角度	Typ.eff 标准效率
SL-RF-AG-028B-S	18°	89%
SL-RF-AG-028B-M	25°	89%
SL-RF-AG-028B-F	35°	89%

- CLU701
- CLU0B0
- CXM-6
- CHM-6
- CLM-6
- CXA13
- CXB13
- V6 HD
- blx C6
- VestaTW6
- LC010C

COVER

- SL-PL-AE-028A
透明镜片
- SL-PL-AE-028B
磨砂镜片
- SL-PL-AE-028C
淡磨砂镜片



SL-RF-AG-045A

Φ:45.0mm H:45.0mm Φ:11.5mm

Code 型号	Typ.FWHM 标准角度	Typ.eff 标准效率
SL-RF-AG-045A-S	18°	83%
SL-RF-AG-045A-M	23°	83%
SL-RF-AG-045A-F	36°	85%

- CLU028
- CLU0A0
- CLU0B0
- CXM-9
- CHM-9
- CXA15
- V10 Gen6
- V10 Gen7
- blx C8
- 1202/1203
- Soleriq S9
- NFCWL036B
- NFCLL036B

COVER

- SL-PL-AE-045A
透明镜片
- SL-PL-AE-045B
磨砂镜片
- SL-PL-AE-045C
淡磨砂镜片



SL-RF-AG-035B

Φ:35.0mm H:28.0mm Φ:8.0mm

Code 型号	Typ.FWHM 标准角度	Typ.eff 标准效率
SL-RF-AG-035B-S	19°	80%
SL-RF-AG-035B-M	24°	80%
SL-RF-AG-035B-F	36°	80%

- CLU701
- CLU0A0
- CLU0B0
- CXM-6
- CXM-7
- CHM-6
- CLM-6
- CXA13
- CXB13
- LC010C
- blx C6
- VestaTW6

COVER

- SL-PL-AE-035A
透明镜片
- SL-PL-AE-035B
磨砂镜片
- SL-PL-AE-035C
淡磨砂镜片



SL-RF-AG-050A

Φ:50.0mm H:50.0mm Φ:12.0mm

Code 型号	Typ.FWHM 标准角度	Typ.eff 标准效率
SL-RF-AG-050A-S	18°	80%
SL-RF-AG-050A-M	23°	80%
SL-RF-AG-050A-F	36°	80%

- CLU028
- CLU0A0
- CLU0B0
- CXM-9
- CHM-9
- CXA15
- V10 Gen6
- V10 Gen7
- blx C8
- 1202/1203
- Soleriq S9
- NFCWL036B
- NFCLL036B

COVER

- SL-PL-AE-050A
透明镜片
- SL-PL-AE-050B
磨砂镜片



SL-RF-AG-035C

Φ:35.0mm H:28.0mm Φ:11.6mm

Code 型号	Typ.FWHM 标准角度	Typ.eff 标准效率
SL-RF-AG-035C-M	24°	84%
SL-RF-AG-035C-F	36°	84%

- CLU028
- CLU0A0
- CLU0B0
- CXM-9
- CHM-9
- CXA15
- V10 Gen6
- V10 Gen7
- blx C8
- 1202/1203
- Soleriq S9
- NFCWL036B
- NFCLL036B

COVER

- SL-PL-AE-035A
透明镜片
- SL-PL-AE-035B
磨砂镜片
- SL-PL-AE-035C
淡磨砂镜片



SL-RF-AG-045B

Φ:45.0mm H:36.0mm Φ:11.4mm

Code 型号	Typ.FWHM 标准角度	Typ.eff 标准效率
SL-RF-AG-045B-S	18°	80%
SL-RF-AG-045B-M	24°	80%
SL-RF-AG-045B-F	36°	80%

CLU028
 CLU0A0
 CLU0B0
 CXM-9
 CHM-9
 CXA15
 V10 Gen6
 V10 Gen7
 blx C8
 1202/1203

Soleriq S9
 NFCWL036B
 NFCLL036B

COVER

SL-PL-AE-045A
 透明镜片
 SL-PL-AE-045B
 磨砂镜片
 SL-PL-AE-045C
 淡磨砂镜片



SL-RF-AG-050B

Φ:50.0mm H:40.0mm Φ:12.0mm

Code 型号	Typ.FWHM 标准角度	Typ.eff 标准效率
SL-RF-AG-050B-S	18°	80%
SL-RF-AG-050B-M	24°	80%
SL-RF-AG-050B-F	36°	80%

CLU028
 CLU0A0
 CLU0B0
 CXM-9
 CHM-9
 CXA15
 V10 Gen6
 V10 Gen7
 blx C8
 1202/1203

Soleriq S9
 NFCWL036B
 NFCLL036B

COVER

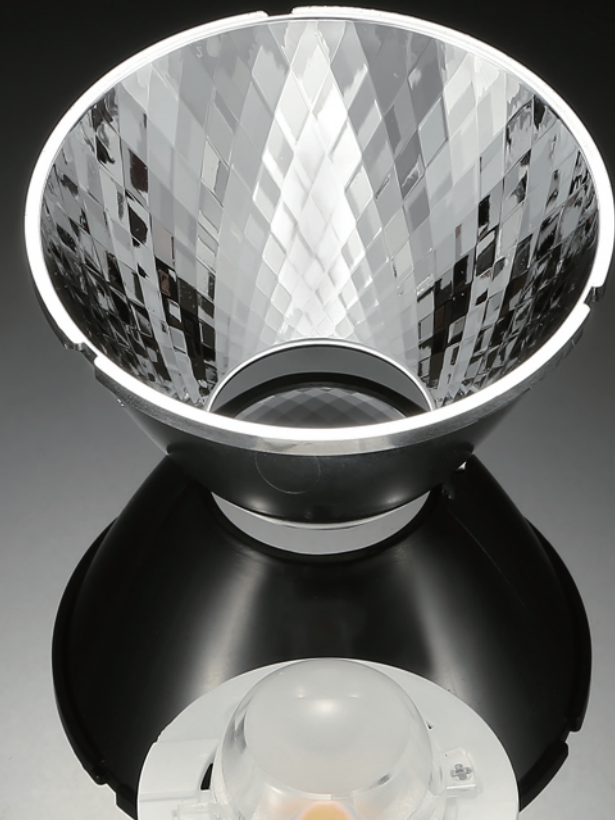
SL-PL-AE-050A
 透明镜片
 SL-PL-AE-050B
 磨砂镜片

黑光技术防眩 光效更高

Dark Light Anti-glare Technology
Higher Light Efficiency



DARK LIGHT REFLECTOR WITH DOME





SL-RF-AD-055A

Φ:55.0mm H:33.5mm Φ:23.0mm

Code 型号	Typ.FWHM 标准角度	Typ.eff 标准效率
SL-RF-AD-055A-S	17°	85%
SL-RF-AD-055A-M	24°	85%
SL-RF-AD-055A-F	38°	85%

MATCHED LED 匹配光源
HOLDER 支架型号

CXA15
SL-HD-AD-11A

CLU028 /G4-10
SL-HD-AD-12A

1202/1203
SL-HD-AD-12B

DOME / 凸透镜
SL-PL-AD-020A

COVER / 镜片
SL-PL-AE-055A



SL-RF-AD-065A

Φ:65.0mm H:38.9mm Φ:26.4mm

Code 型号	Typ.FWHM 标准角度	Typ.eff 标准效率
SL-RF-AD-065A-S	14°- 20°	87%
SL-RF-AD-065A-M	22°- 24°	87%
SL-RF-AD-065A-F	34°- 37°	86%

MATCHED LED 匹配光源
HOLDER 支架型号

CXA15
SL-HD-AD-11A

CLU028 /G4-10
SL-HD-AD-12A

1202/1203
SL-HD-AD-12B

DOME / 凸透镜
SL-PL-AD-027A

COVER / 镜片
SL-PL-AE-065A



SL-RF-AD-075A

Φ:75.0mm H:45.5mm Φ:30.1mm

Code 型号	Typ.FWHM 标准角度	Typ.eff 标准效率
SL-RF-AD-075A-S	15°- 20°	86%
SL-RF-AD-075A-M	19°- 23°	83%
SL-RF-AD-075A-F	27°- 35°	83%

MATCHED LED 匹配光源
HOLDER 支架型号

CXA18
SL-HD-AD-14A

CLU721/CXM-14
SL-HD-AD-16A

CLU038
SL-HD-AD-17A

DOME / 凸透镜
SL-PL-AD-030B

COVER / 镜片
SL-PL-AE-075A



SL-RF-AD-085A

Φ:85.0mm H:46.3mm Φ:32.5mm

Code 型号	Typ.FWHM 标准角度	Typ.eff 标准效率
SL-RF-AD-085A-S	16°- 19°	88%
SL-RF-AD-085A-M	23°- 26°	89%
SL-RF-AD-085A-F	38°- 42°	89%

MATCHED LED 匹配光源
HOLDER 支架型号

CXA18
SL-HD-AD-14A

CLU721/CXM-14
SL-HD-AD-16A

CLU038
SL-HD-AD-17A

DOME / 凸透镜
SL-PL-AD-032A

COVER / 镜片
SL-PL-AE-085A

SL-050L

Φ:50.0mm H:51.0mm Φ:10.4mm

Code 型号	Typ.FWHM 标准角度	Typ.eff 标准效率
SL-050L-S	8°-13°	80%
SL-050L-M	21°-25°	80%
SL-050L-L	36°-39°	80%

COVER
SL-050-CLEAR LENS
透明镜片
SL-050-MIX-LENS-A
磨砂镜片



III
DARK
LIGHT
REFLECTOR

MATCHED LED

- CLU028
- CLU701
- CXM-6
- CHM-6
- CXM-7
- CXM-9
- CHM-9
- CXA13
- CXA15
- C6
- V10 Gen6
- V10 Gen7
- E8
- blx C6
- blx C8
- Soleriq S9
- 105
- 1202/1203
- G4-10
- LC006B
- LC010C
- LC020C
- NJCxS024Z
- NTCxS024B
- NFCxL036B



EACH RAY IS BRIGHTER IN SHINLAND
www.shinland.com.cn

SL-RF-AF
ANTI-GLARE
TRIM

IV

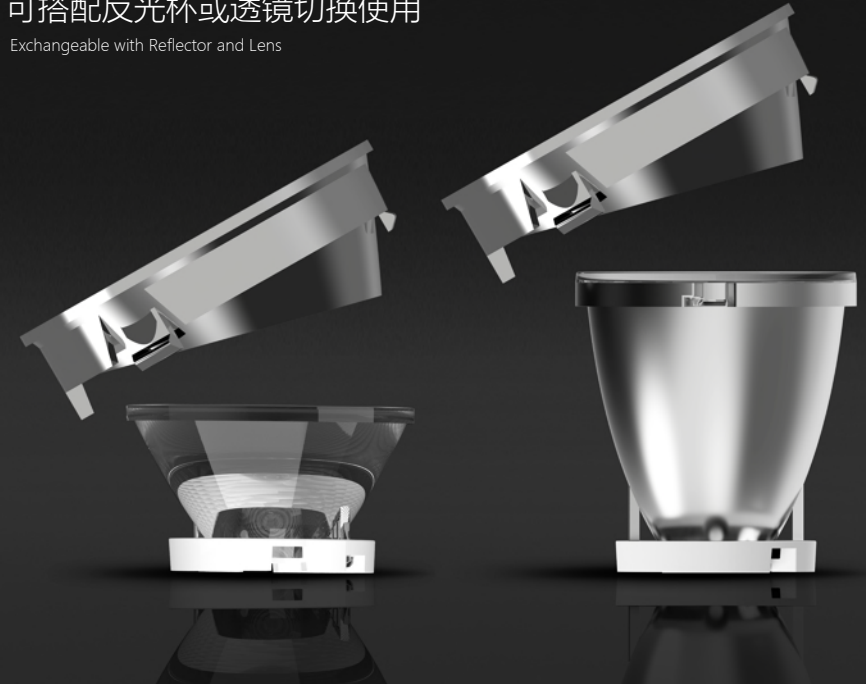
为高防眩要求空间 提供系统化产品方案

Provide Systematic Product Solutions for
Spaces With High Anti-Glare Requirements



可搭配反光杯或透镜切换使用

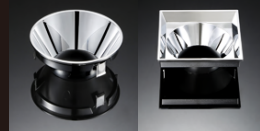
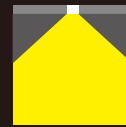
Exchangeable with Reflector and Lens



三种应用方式

3 Different Applications

Down Light 直打



Adjustable 斜打



Wall Washer 洗墙





SL-RF-AF-030A

Vaccum Aluminum Plating PC
真空镀铝

Φ:30.0mm H:8.2mm Φ:19.8mm

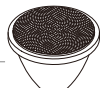
SL-RF-AF-040A

Vaccum Aluminum Plating PC
真空镀铝

Φ:40.0mm H:11mm Φ:28mm



SL-RF-AF-030A-RD



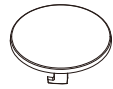
SL-PL-AG-020A



SL-RF-AF-040A-RD



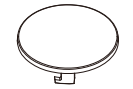
SL-PL-AG-028A



SL-PL-AE-022A



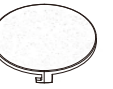
SL-PL-AE-022B



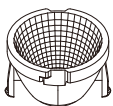
SL-PL-AE-028A



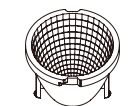
SL-PL-AE-028B



SL-PL-AE-028C



SL-RF-AA-022A



SL-RF-AG-028B

L001 珍珠白
L a b
98.30 -0.71 1.24

Y003 象牙白
L a b
96.97 -1.15 2.55

L201 月光银
L a b
93.85 -0.45 2.16

Y204 亚麻银
L a b
90.66 -0.70 1.66

Y206 神秘银
L a b
78.29 -0.53 -0.15

L304 香槟金
L a b
87.30 -1.77 43.40

L301 土豪金
L a b
76.91 17.15 68.18

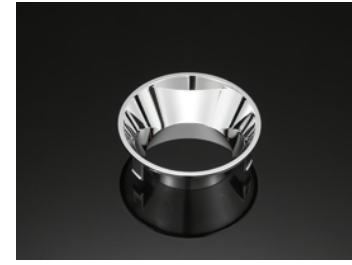
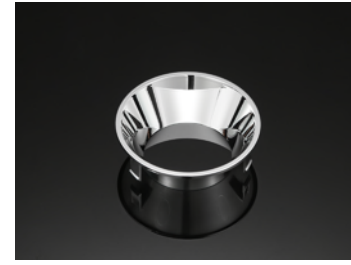
L401 魅惑金
L a b
61.41 45.59 50.96

L501 孔雀绿
L a b
60.50 -5.31 21.41

L102 耀目黑
L a b
66.50 -0.90 1.21

L103 玛瑙黑
L a b
30.29 -0.02 2.24

Y103 深空黑
L a b
24.63 0.04 -0.89



SL-RF-AF-050A

Vaccum Aluminum Plating PC
真空镀铝

Φ:50.0mm H:13.7mm Φ:32.6mm

SL-RF-AF-070A

Vaccum Aluminum Plating PC
真空镀铝

Φ:70.0mm H:22.8mm Φ:43.0mm



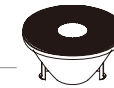
SL-RF-AF-050A



SL-PL-AG-035A



SL-RF-AF-070A



SL-PL-AG-045A



SL-PL-AE-035A



SL-PL-AE-035B



SL-PL-AE-035C



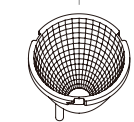
SL-PL-AE-045A



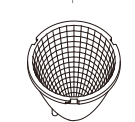
SL-PL-AE-045B



SL-PL-AE-045C



SL-RF-AG-035A
SL-RF-AG-035B
SL-RF-AG-035C



SL-RF-AG-045A
SL-RF-AG-045B

L001 珍珠白
L a b
98.30 -0.71 1.24

Y003 象牙白
L a b
96.97 -1.15 2.55

L201 月光银
L a b
93.85 -0.45 2.16

Y204 亚麻银
L a b
90.66 -0.70 1.66

Y206 神秘银
L a b
78.29 -0.53 -0.15

L304 香槟金
L a b
87.30 -1.77 43.40

L301 土豪金
L a b
76.91 17.15 68.18

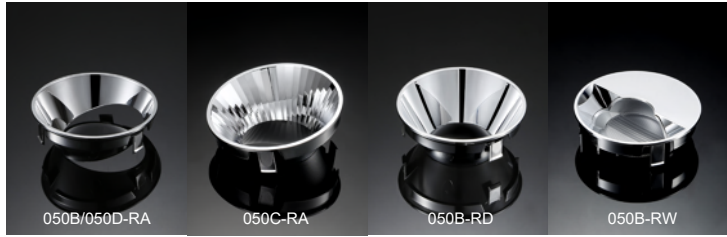
L401 魅惑金
L a b
61.41 45.59 50.96

L501 孔雀绿
L a b
60.50 -5.31 21.41

L102 耀目黑
L a b
66.50 -0.90 1.21

L103 玛瑙黑
L a b
30.29 -0.02 2.24

Y103 深空黑
L a b
24.63 0.04 -0.89



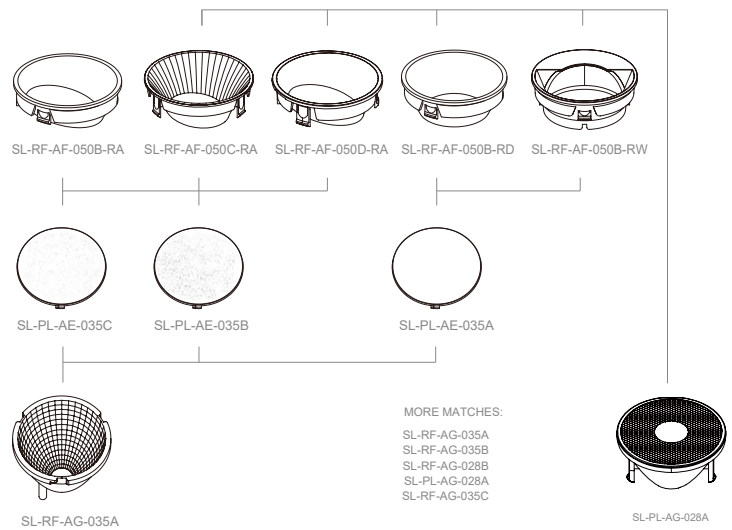
SL-RF-AF-050B/C/D

Vaccum Aluminum Plating PC

Φ: 50.0mm H: 18.0mm

真空镀铝

Code 型号	APPLICATION 标准应用
SL-RF-AF-050B-RA	ROUND ADJUSTABLE
SL-RF-AF-050C-RA	ROUND ADJUSTABLE
SL-RF-AF-050D-RA	ROUND ADJUSTABLE
SL-RF-AF-050B-RD	ROUND DOWNLIGHT
SL-RF-AF-050B-RW	ROUND WALLWASHER



L001 珍珠白
L a b
98.30 -0.71 1.24

Y003 象牙白
L a b
96.97 -1.15 2.55

L201 月光银
L a b
93.85 -0.45 2.16

Y204 亚麻银
L a b
90.66 -0.70 1.66

Y206 神秘银
L a b
78.29 -0.53 -0.15

L304 香槟金
L a b
87.30 -1.77 43.40

L301 土豪金
L a b
76.91 17.15 68.18

L401 魅惑金
L a b
61.41 45.59 50.96

L501 孔雀绿
L a b
60.50 -5.31 21.41

L102 耀目黑
L a b
66.50 -0.90 1.21

L103 玛瑙黑
L a b
30.29 -0.02 2.24

Y103 深空黑
L a b
24.63 0.04 -0.89



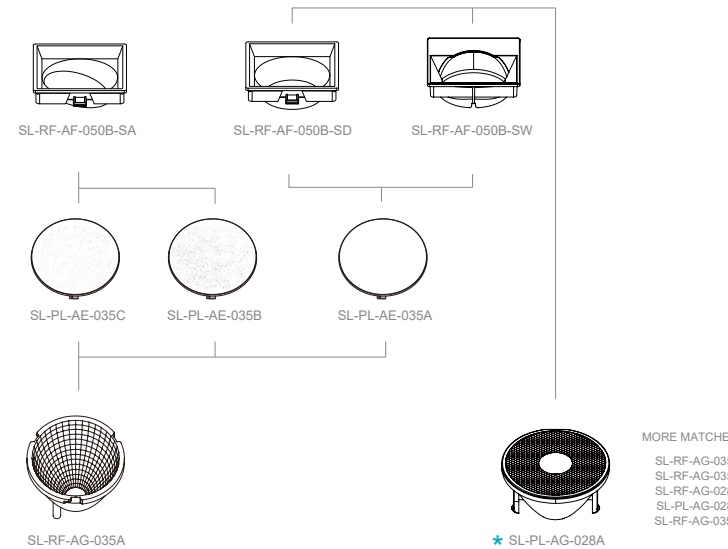
SL-RF-AF-050B

Vaccum Aluminum Plating PC

Φ: 50.0mm H: 18.0mm

真空镀铝

Code 型号	APPLICATION 标准应用
SL-RF-AF-050B-SA	SQUARE ADJUSTABLE
SL-RF-AF-050B-SD	SQUARE DOWNLIGHT
SL-RF-AF-050B-SW	SQUARE WALLWASHER



L001 珍珠白
L a b
98.30 -0.71 1.24

Y003 象牙白
L a b
96.97 -1.15 2.55

L201 月光银
L a b
93.85 -0.45 2.16

Y204 亚麻银
L a b
90.66 -0.70 1.66

Y206 神秘银
L a b
78.29 -0.53 -0.15

L304 香槟金
L a b
87.30 -1.77 43.40

L301 土豪金
L a b
76.91 17.15 68.18

L401 魅惑金
L a b
61.41 45.59 50.96

L501 孔雀绿
L a b
60.50 -5.31 21.41

L102 耀目黑
L a b
66.50 -0.90 1.21

L103 玛瑙黑
L a b
30.29 -0.02 2.24

Y103 深空黑
L a b
24.63 0.04 -0.89



SL-RF-AF-070B/C/D

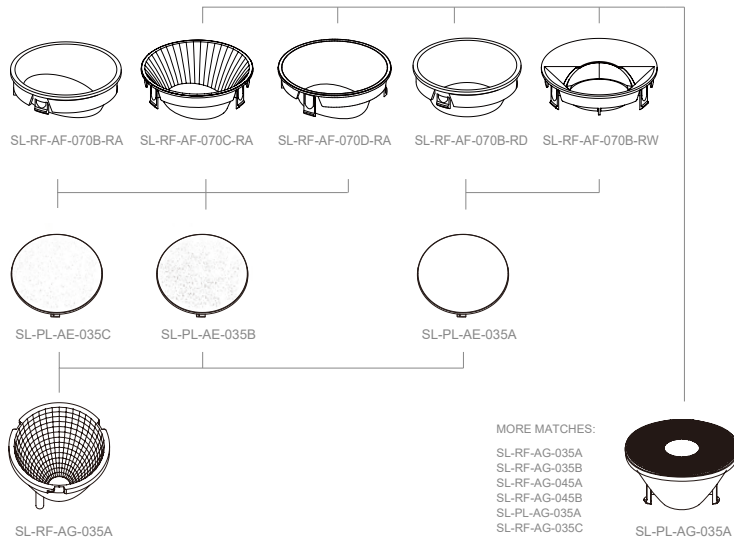
Vaccum Aluminum Plating PC

Φ: 70.0mm H: 27.0mm

真空镀铝



Code 型号	APPLICATION 标准应用
SL-RF-AF-070B-RA	ROUND ADJUSTABLE
SL-RF-AF-070C-RA	ROUND ADJUSTABLE
SL-RF-AF-070D-RA	ROUND DOWNLIGHT
SL-RF-AF-070B-RD	ROUND ADJUSTABLE
SL-RF-AF-070B-RW	ROUND WALLWASHER



L001 珍珠白
L a b
98.30 -0.71 1.24

Y003 象牙白
L a b
96.97 -1.15 2.55

L201 月光银
L a b
93.85 -0.45 2.16

Y204 亚麻银
L a b
90.66 -0.70 1.66

Y206 神秘银
L a b
78.29 -0.53 -0.15

L304 香槟金
L a b
87.30 -1.77 43.40

L301 土豪金
L a b
76.91 17.15 68.18

L401 魅惑金
L a b
61.41 45.59 50.96

L501 孔雀绿
L a b
60.50 -5.31 21.41

L102 耀目黑
L a b
66.50 -0.90 1.21

L103 玛瑙黑
L a b
30.29 -0.02 2.24

Y103 深空黑
L a b
24.63 0.04 -0.89



SL-RF-AF-070E

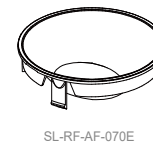
Vaccum Aluminum Plating PC

Φ: 70.0mm H: 22.0mm

真空镀铝



Code 型号	APPLICATION 标准应用
SL-RF-AF-070E-RA	ROUND ADJUSTABLE



L001 珍珠白
L a b
98.30 -0.71 1.24

Y003 象牙白
L a b
96.97 -1.15 2.55

L201 月光银
L a b
93.85 -0.45 2.16

Y204 亚麻银
L a b
90.66 -0.70 1.66

Y206 神秘银
L a b
78.29 -0.53 -0.15

L304 香槟金
L a b
87.30 -1.77 43.40

L301 土豪金
L a b
76.91 17.15 68.18

L401 魅惑金
L a b
61.41 45.59 50.96

L501 孔雀绿
L a b
60.50 -5.31 21.41

L102 耀目黑
L a b
66.50 -0.90 1.21

L103 玛瑙黑
L a b
30.29 -0.02 2.24

Y103 深空黑
L a b
24.63 0.04 -0.89



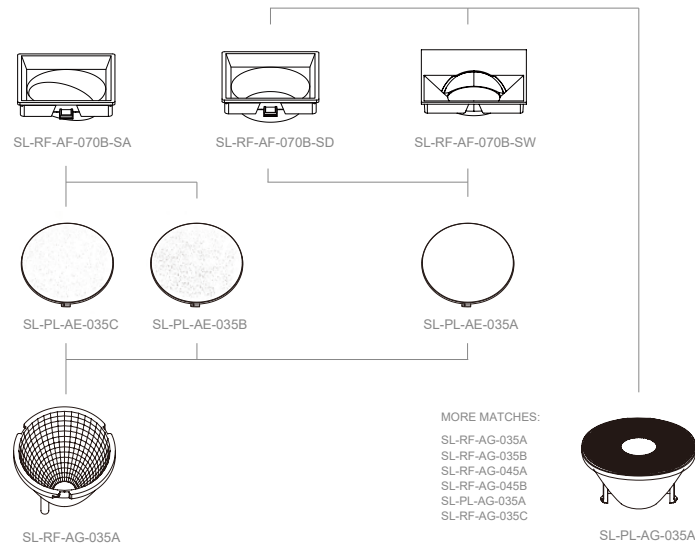
SL-RF-AF-070B

Vaccum Aluminum Plating PC

Φ: 70.0mm H: 27.0mm

真空镀铝

Code 型号	APPLICATION 标准应用
SL-RF-AF-070B-SA	SQUARE ADJUSTABLE
SL-RF-AF-070B-SD	SQUARE DOWNLIGHT
SL-RF-AF-070B-SW	SQUARE WALLWASHER



L001 珍珠白
L a b
98.30 -0.71 1.24

Y003 象牙白
L a b
96.97 -1.15 2.55

L201 月光银
L a b
93.85 -0.45 2.16

Y204 亚麻银
L a b
90.66 -0.70 1.66

Y206 神秘银
L a b
78.29 -0.53 -0.15

L304 香槟金
L a b
87.30 -1.77 43.40

L301 土豪金
L a b
76.91 17.15 68.18

L401 魅惑金
L a b
61.41 45.59 50.96

L501 孔雀绿
L a b
60.50 -5.31 21.41

L102 耀目黑
L a b
66.50 -0.90 1.21

L103 玛瑙黑
L a b
30.29 -0.02 2.24

Y103 深空黑
L a b
24.63 0.04 -0.89



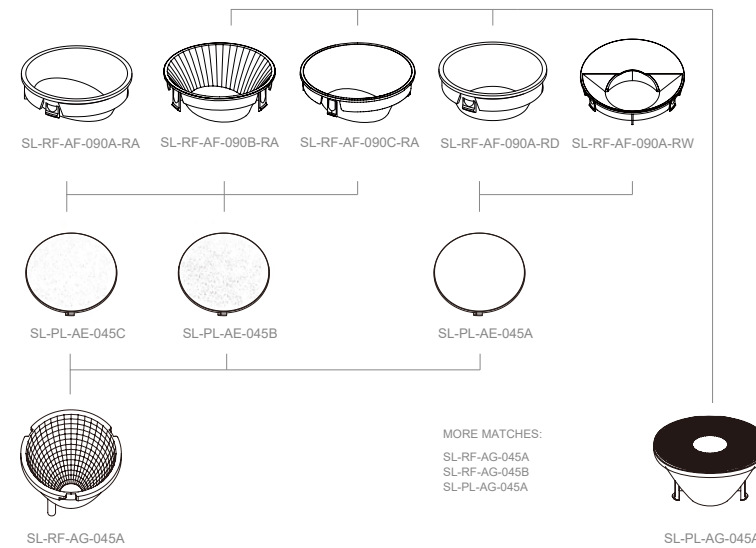
SL-RF-AF-090A/B/C

Vaccum Aluminum Plating PC

Φ: 90.0mm H: 35.0mm

真空镀铝

Code 型号	APPLICATION 标准应用
SL-RF-AF-090A-RA	ROUND ADJUSTABLE
SL-RF-AF-090B-RA	ROUND ADJUSTABLE
SL-RF-AF-090C-RA	ROUND ADJUSTABLE
SL-RF-AF-090A-RD	ROUND DOWNLIGHT
SL-RF-AF-090A-RW	ROUND WALLWASHER



L001 珍珠白
L a b
98.30 -0.71 1.24

Y003 象牙白
L a b
96.97 -1.15 2.55

L201 月光银
L a b
93.85 -0.45 2.16

Y204 亚麻银
L a b
90.66 -0.70 1.66

Y206 神秘银
L a b
78.29 -0.53 -0.15

L304 香槟金
L a b
87.30 -1.77 43.40

L301 土豪金
L a b
76.91 17.15 68.18

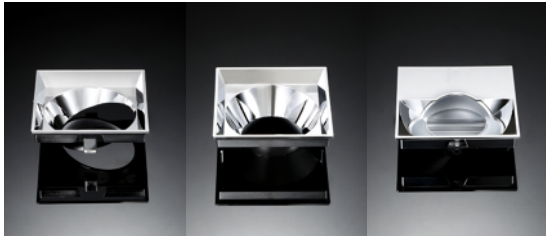
L401 魅惑金
L a b
61.41 45.59 50.96

L501 孔雀绿
L a b
60.50 -5.31 21.41

L102 耀目黑
L a b
66.50 -0.90 1.21

L103 玛瑙黑
L a b
30.29 -0.02 2.24

Y103 深空黑
L a b
24.63 0.04 -0.89



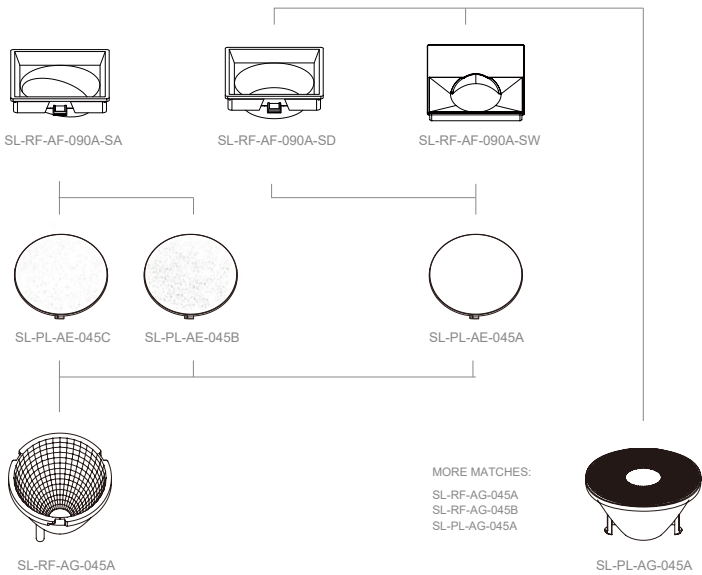
SL-RF-AF-090A

Vaccum Aluminum Plating PC

Φ: 90.0mm H: 35.0mm

真空镀铝

Code 型号	APPLICATION 标准应用
SL-RF-AF-090A-SA	SQUARE ADJUSTABLE
SL-RF-AF-090A-SD	SQUARE DOWNLIGHT
SL-RF-AF-090A-SW	SQUARE WALLWASHER



L001 珍珠白
L a b
98.30 -0.71 1.24

Y003 象牙白
L a b
96.97 -1.15 2.55

L201 月光银
L a b
93.85 -0.45 2.16

Y204 亚麻银
L a b
90.66 -0.70 1.66

Y206 神秘银
L a b
78.29 -0.53 -0.15

L304 香槟金
L a b
87.30 -1.77 43.40

L301 土豪金
L a b
76.91 17.15 68.18

L401 魅惑金
L a b
61.41 45.59 50.96

L501 孔雀绿
L a b
60.50 -5.31 21.41

L102 耀目黑
L a b
66.50 -0.90 1.21

L103 玛瑙黑
L a b
30.29 -0.02 2.24

Y103 深空黑
L a b
24.63 0.04 -0.89



SL-RF-AF-115A-RA

Vaccum Aluminum Plating PC

真空镀铝

Φ:115.0mm H:42.0mm



SL-RF-AF-115A-RA



SL-062-MIXING LENS



SL-062A

L001 珍珠白
L a b
98.30 -0.71 1.24

Y003 象牙白
L a b
96.97 -1.15 2.55

L201 月光银
L a b
93.85 -0.45 2.16

Y204 亚麻银
L a b
90.66 -0.70 1.66

Y206 神秘银
L a b
78.29 -0.53 -0.15

L304 香槟金
L a b
87.30 -1.77 43.40

L301 土豪金
L a b
76.91 17.15 68.18

L401 魅惑金
L a b
61.41 45.59 50.96

L501 孔雀绿
L a b
60.50 -5.31 21.41

L102 耀目黑
L a b
66.50 -0.90 1.21

L103 玛瑙黑
L a b
30.29 -0.02 2.24

Y103 深空黑
L a b
24.63 0.04 -0.89

SL-RF-AE
PROFILE LINEAR II

SL-E
PROFILE LINEAR

V

自带防眩
外观可自由拼接设计

Comes with Anti-glare
Freely Spliced

多元素线性光学解决方案

Diversified Linear Optical
Solutions



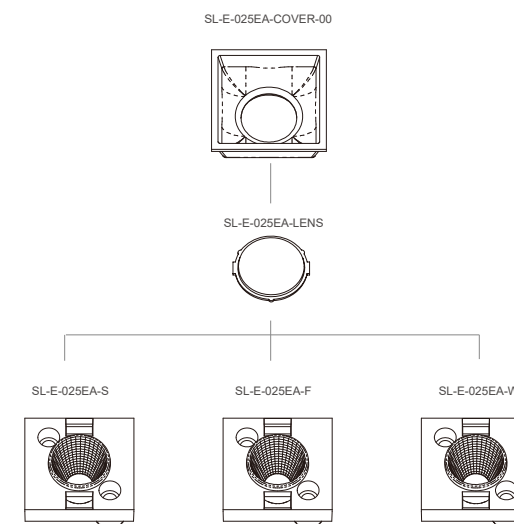
SL-E-025EA

Vacuum Aluminum Plating PC
真空镀铝

L:27.4mm W:27.4mm H:21.9mm



Code 型号	Typ.FWHM 标准角度	Typ.eff 标准效率
SL-E-025EA-S	12°	90%
SL-E-025EA-F	34°	90%
SL-E-025EA-W	48°	90%



XPB35
XP-L
XP-G2/3
XP-E2
Osion
LUXEON T
LUXEON TX
LUXEON REBEL ES



SL-E-132EA

Vacuum Aluminum Plating PC
真空镀铝

L:132.8mm W:30.0mm H:21.9mm

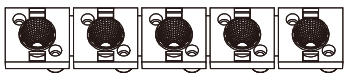


Code 型号	Typ.FWHM 标准角度	Typ.eff 标准效率
SL-E-132EA-S	12°	90%
SL-E-132EA-F	34°	90%
SL-E-132EA-W	48°	90%

SL-E-132EA-S



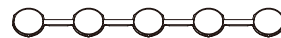
SL-E-132EA-F



SL-E-132EA-W



SL-E-132EA-COVER-00



SL-E-132EA-COVER-00



XPH35
XP-L
XP-G2/3
XP-E2
Osion
LUXEON T
LUXEON TX
LUXEON REBEL ES

SL-E-132EB

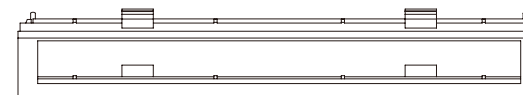
Vacuum Aluminum Plating PC
真空镀铝

L:132.8mm W:30.0mm H:21.9mm



Code 型号	Typ.FWHM 标准角度	Typ.eff 标准效率
SL-E-132EB	WALL WASH	65%

SL-E-132EB-COVER-00



SL-E-132EB-LENS



SL-E-132EB



SL-E-132EB-WW



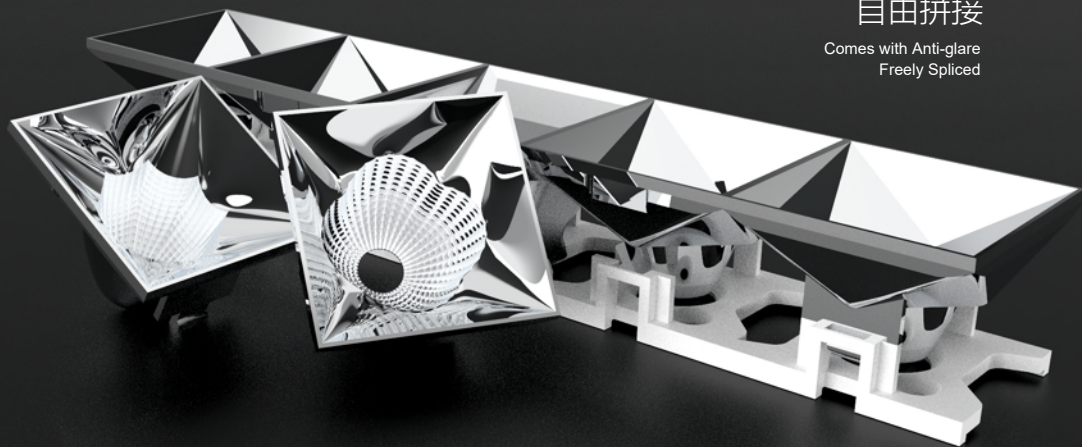
XPH25
XP-L
XP-G2/3
XP-E2
Osion
SST-20-WTH
LUXEON T
LUXEON TX
LUXEON REBEL ES

SL-RF-AE
PROFILE LINEAR II



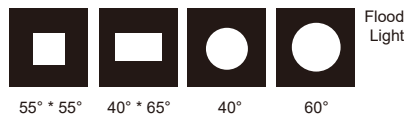
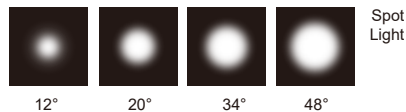
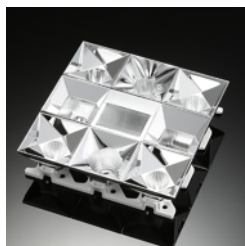
自带防眩
自由拼接

Comes with Anti-glare
Freely Spliced



同尺寸
9种光型任意切换

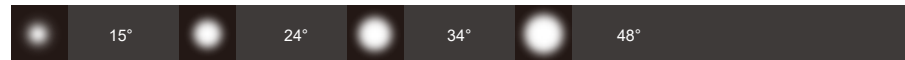
Exchangeable with 9 Different Light Pattern with
Same Dimension



SL-RF-AE-030A

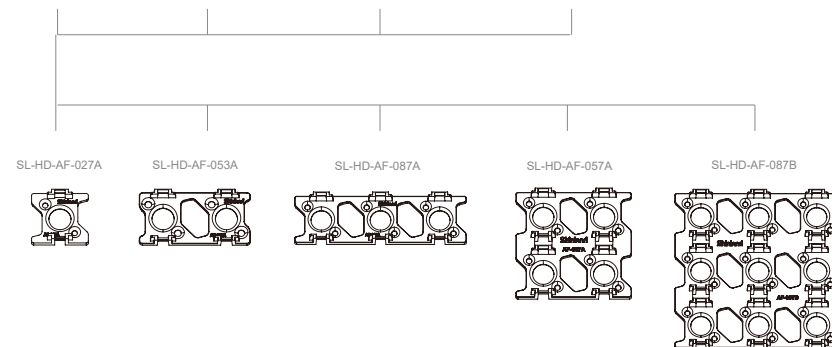
Vacuum Aluminum Plating PC
真空镀铝

L:30.0mm W:30.0mm H:21.15mm



Code 型号	Typ.FWHM 标准角度	Typ.eff 标准效率
SL-RF-AE-030A-S	15°	88%
SL-RF-AE-030A-M	24°	88%
SL-RF-AE-030A-F	34°	88%
SL-RF-AE-030A-W	48°	88%

SL-RF-AE-030A-S SL-RF-AE-030A-M SL-RF-AE-030A-F SL-RF-AE-030A-W

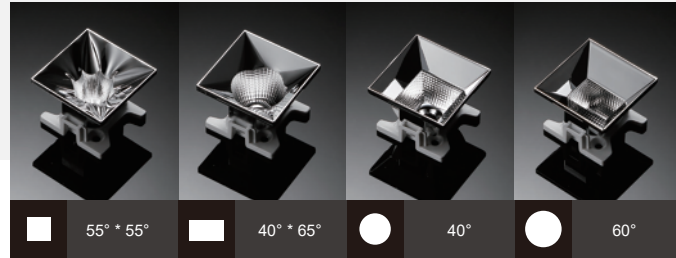


XP-G2/3
XP-E2
SST-20-WTH
Oscon

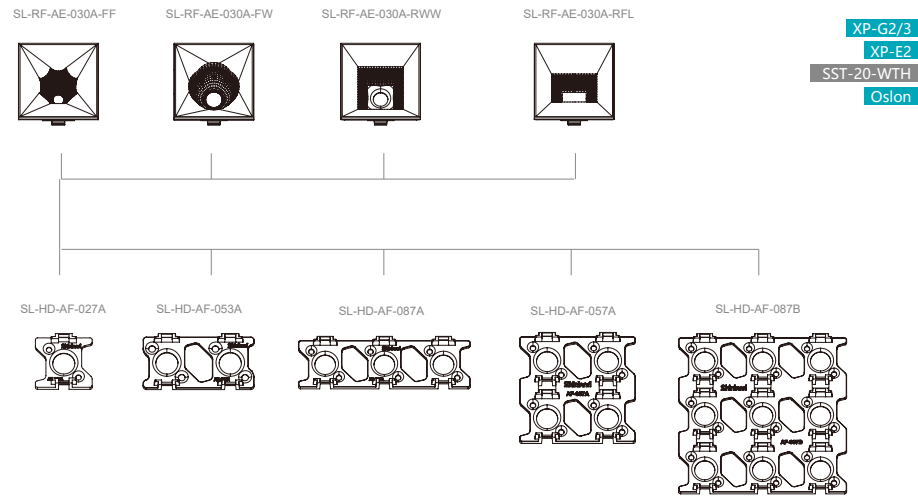
SL-RF-AE-030A

L:30.0mm W:30.0mm H:21.15mm

Vaccum Aluminum Plating PC
真空镀铝



Code 型号	Typ.FWHM 标准角度	Typ.eff 标准效率
SL-RF-AE-030A-FF	Flood 40°	88%
SL-RF-AE-030A-FW	Flood 60°	88%
SL-RF-AE-030A-RWW	Square 55° * 55°	85%
SL-RF-AE-030A-RFL	Rectangular 40° * 65°	85%



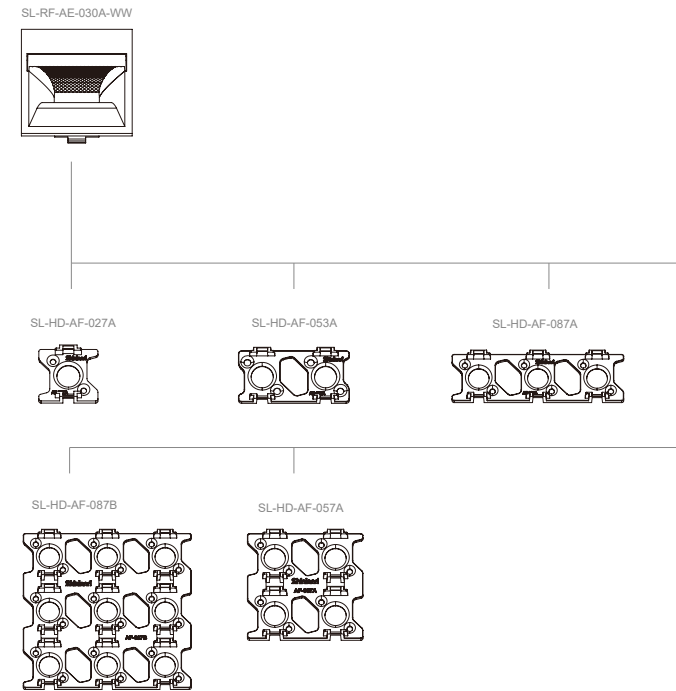
SL-RF-AE-030A

Vaccum Aluminum Plating PC
真空镀铝

L:30.0mm W:30.0mm H:21.15mm



Code 型号	Typ.FWHM 标准角度	Typ.eff 标准效率
SL-RF-AE-030A-WW	Wallwasher	70%



SL-RF-AE-150A

Vacuum Aluminum Plating PC
真空镀铝

L:150.0mm W:30.0mm H:21.15mm



SL-RF-AE-150A

Vacuum Aluminum Plating PC
真空镀铝

L:150.0mm W:30.0mm H:21.15mm



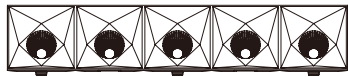
Code 型号	Typ.FWHM 标准角度	Typ.eff 标准效率
SL-RF-AE-150A-S	15°	88%
SL-RF-AE-150A-M	24°	88%
SL-RF-AE-150A-F	34°	88%
SL-RF-AE-150A-W	48°	88%

Code 型号	Typ.FWHM 标准角度	Typ.eff 标准效率
SL-RF-AE-150A-FF	Flood 40°	88%
SL-RF-AE-150A-FW	Flood 60°	88%
SL-RF-AE-150A-RWW	Square 55° * 55°	85%
SL-RF-AE-150A-RFL	Rectangular 40° * 65°	85%

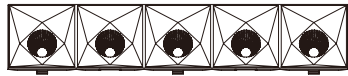
SL-RF-AE-150A-S



SL-RF-AE-150A-M



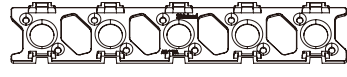
SL-RF-AE-150A-F



SL-RF-AE-150A-W



SL-HD-AF-147A



XP-G2/3
XP-E2
SST-20-WTH
Oslo

SL-RF-AE-150A-FF



SL-RF-AE-150A-FW



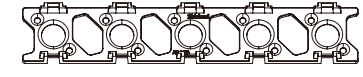
SL-RF-AE-150A-RWW



SL-RF-AE-150A-RFL



SL-HD-AF-147A



XP-G2/3
XP-E2
SST-20-WTH
Oslo

SL-RF-AE-150A

Vacuum Aluminum Plating PC
真空镀铝

L:150.0mm W:30.0mm H:21.15mm



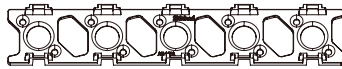
Code 型号	Typ.FWHM 标准角度	Typ.eff 标准效率
SL-RF-AE-150A-WW	Wallwasher	70%



SL-RF-AE-150A-WW



SL-HD-AF-147A



XP-G2/3

XP-E2

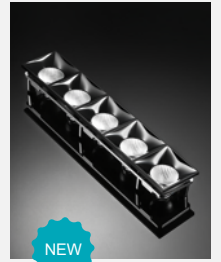
SST-20-WTH

Oslon

SL-RF-AE-187A

Vacuum Aluminum Plating PC
真空镀铝

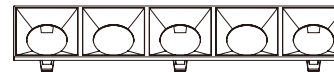
L:190.0mm W:38.0mm H:26.0mm



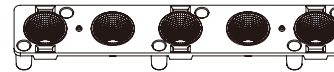
Code 型号	Typ.FWHM 标准角度	Typ.eff 标准效率
SL-RF-AE-187A-M	21°-24°	72%
SL-RF-AE-187A-F	33°-36°	72%



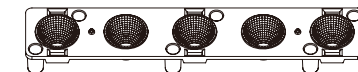
SL-RF-AI-190A



SL-RF-AE-187A-M



SL-RF-AE-187A-F



SL-PL-AK-169A-X



5050 Package

S8

FRONT FOCAL
LENS

VI

小黑洞
出大光斑

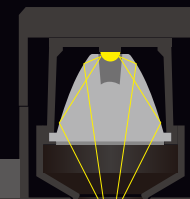
Deep Focal Length
Anti-Glare Trim Design



深焦距
防眩设计

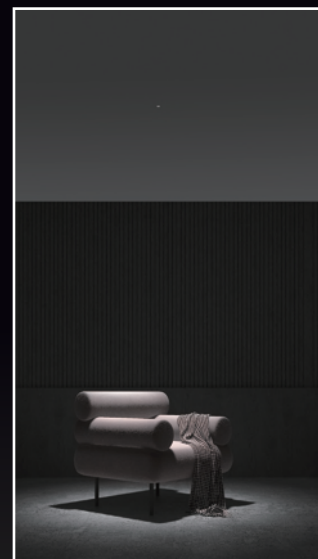
Deep Focal Length Anti-Glare Trim Design

UGR < 9



见光不见灯的最
佳解决方案

Best Solution to see Light from NoWhere



SL-PL-AM-020A

Optical Transparent PC
光学级透明PC

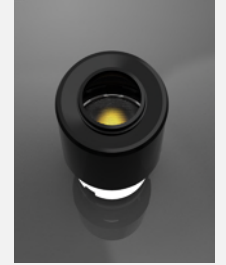
Φ:20.0mm H:15.0mm Φ:4.0mm



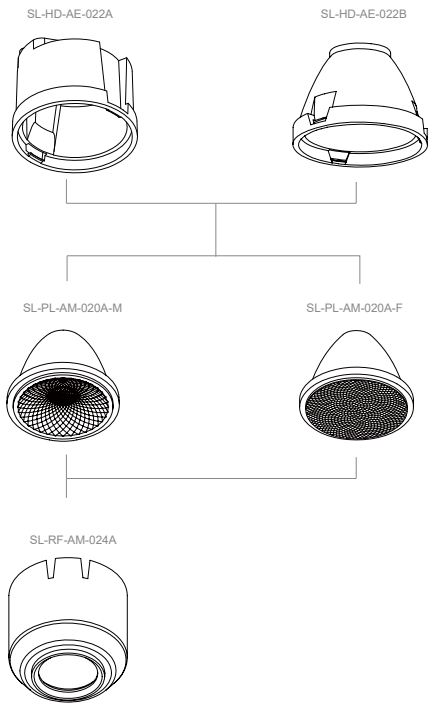
SL-PL-AM-025A

Optical Transparent PC
光学级透明PC

Φ:25.0mm H:20.0mm Φ:7.0mm



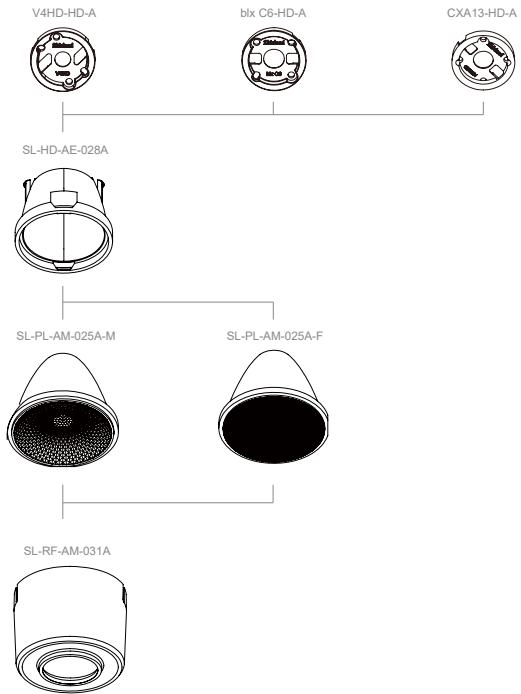
Code 型号	Typ.FWHM 标准角度	Typ.eff 标准效率	module.eff 成套效率
SL-PL-AM-020A-M	22°	90%	50%
SL-PL-AM-020A-F	36°	90%	58%



- XP-E
- XP-G
- XPE-2
- XPG-2/3
- XHP35-HI



Code 型号	Typ.FWHM 标准角度	Typ.eff 标准效率	module.eff 成套效率
SL-PL-AM-025A-M	24°	87%	48%
SL-PL-AM-025A-F	36°	87%	55%



- CXM-4
- CMA1303
- V4 HD
- blx C6

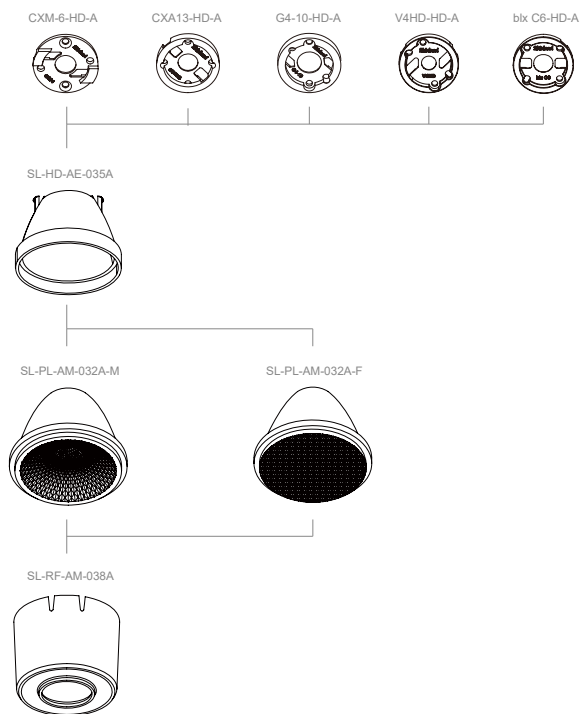
SL-PL-AM-032A

Optical Transparent PC
光学级透明PC

Φ:32.0mm H:24.0mm Φ:9.0mm



Code 型号	Typ.FWHM 标准角度	Typ.eff 标准效率	module.eff 成套效率
SL-PL-AM-032A-M	24°	86%	50%
SL-PL-AM-032A-F	36°	86%	65%



- CXM-4
- CXM-6
- CMA1303
- CXA13
- V4HD
- V6HD
- blx C6

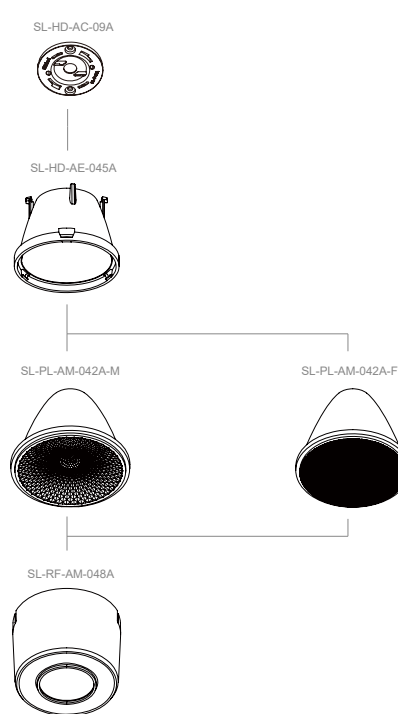
SL-PL-AM-042A

Optical Transparent PC
光学级透明PC

Φ:45.0mm H:35.0mm Φ:9.8mm



Code 型号	Typ.FWHM 标准角度	Typ.eff 标准效率	module.eff 成套效率
SL-PL-AM-042A-M	24°	83%	45%
SL-PL-AM-042A-F	36°	83%	60%



- CLU701
- CXM-6
- V6 HD

EXCHANGEABLE DESIGN

VII

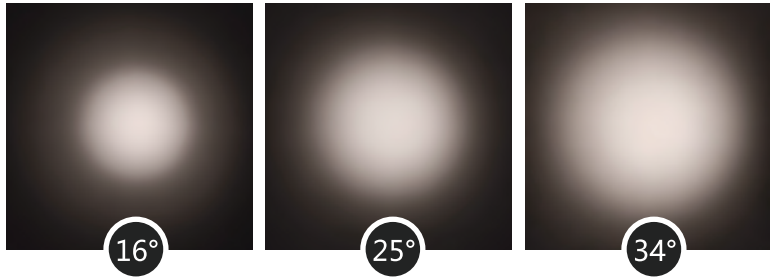
反光杯与透镜 任意切换

Exchangeable Between
Reflector and Lens

UGR < 9

光斑饱满，角度区分度高

Perfect Light Pattern
High Definition in Angle



SL-RF-AO-048A

Φ:47.5mm H:24.8mm Φ:14.4mm

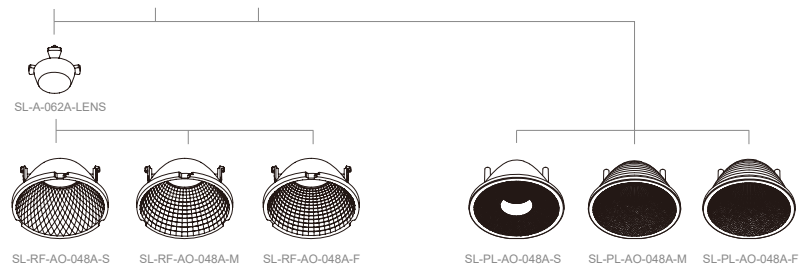


SL-PL-AO-048A

Φ:47.5mm H:24.8mm Φ:15.0mm

Code 型号	Typ.FWHM 标准角度	Typ.eff 标准效率
SL-RF-AO-048A-S	14°-18°	82%
SL-RF-AO-048A-M	20°-25°	82%
SL-RF-AO-048A-F	37°-42°	82%

Code 型号	Typ.FWHM 标准角度	Typ.eff 标准效率
SL-PL-AO-048A-S	14°-19°	88%
SL-PL-AO-048A-M	22°-27°	89%
SL-PL-AO-048A-F	33°-39°	89%



SL-PL-AE-048A

H: 18-24mm, 防眩罩自行设计
此光学搭配防眩罩结构方可达到最佳效果

Vaccum
Aluminum
Plating
PC
真空镀铝

支架型号: HD-09A	HD-AD-09A	SL-HD-AD-11C	SL-HD-AD-12C
LED光源: V6 HD	V6 HD/CXM-6/CLU028	CXA15	CLU028/CXA15

- CLU028
- CLU028
- CXM-6
- CXM-9
- V6 HD
- CXA 15



SL-RF-AO-062A

Φ:62.0mm H:28.0mm Φ:30.0mm

SL-PL-AO-062A

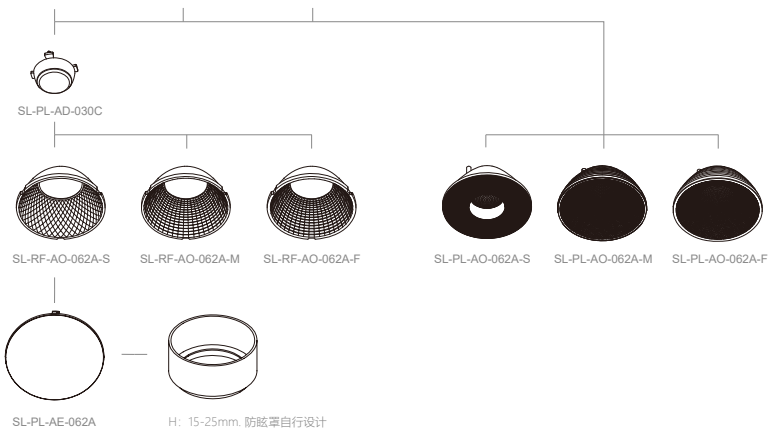
Φ:62.0mm H:28.0mm Φ:28.0mm

Code 型号	Typ.FWHM 标准角度	Typ.eff 标准效率
SL-RF-AO-062A-S	11°-20°	84%
SL-RF-AO-062A-M	22°-26°	84%
SL-RF-AO-062A-F	28°-36°	84%

Code 型号	Typ.FWHM 标准角度	Typ.eff 标准效率
SL-PL-AO-062A-S	11°-20°	88%
SL-PL-AO-062A-M	20°-27°	88%
SL-PL-AO-062A-F	30°-34°	88%



SL-HD-AD-11A SL-HD-AD-11B SL-HD-AD-12A



SL-PL-AE-062A H: 15-25mm. 防眩罩自行设计
此光学搭配防眩罩结构方可达到最佳效果

Vacuum
Aluminum
Plating
PC
真空镀铝

光源/光源	光源型号	SL-HD-AD-11A	SL-HD-AD-11B	SL-HD-AD-12A
	CXA15			
	CXM-9			
	CLU028			

CLU028
CXA15
CXM-9



SL-RF-AO-072A

Φ:72.0mm H:32.0mm Φ:22.0mm

SL-PL-AO-072A

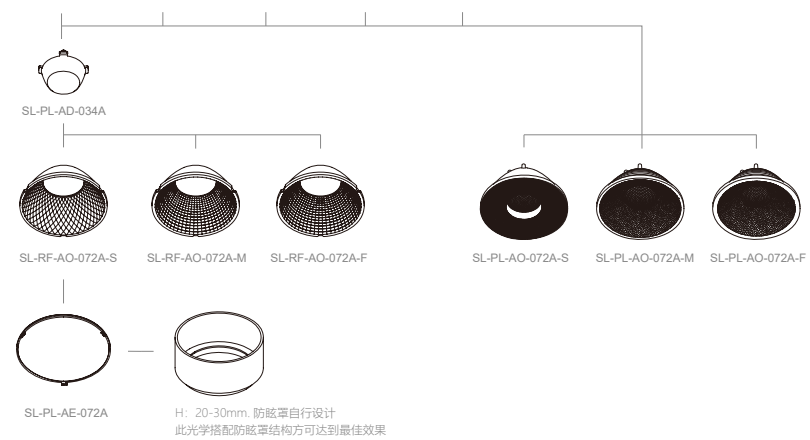
Φ:72.0mm H:32.0mm Φ:27.5mm

Code 型号	Typ.FWHM 标准角度	Typ.eff 标准效率
SL-RF-AO-072A-S	11°-20°	80%
SL-RF-AO-072A-M	22°-26°	80%
SL-RF-AO-072A-F	28°-36°	80%

Code 型号	Typ.FWHM 标准角度	Typ.eff 标准效率
SL-PL-AO-072A-S	11°-20°	86%
SL-PL-AO-072A-M	20°-27°	86%
SL-PL-AO-072A-F	30°-34°	90%



SL-HD-AD-11A SL-HD-AD-11B SL-HD-AD-12A SL-HD-AD-14A SL-HD-AD-17A



SL-PL-AE-072A H: 20-30mm. 防眩罩自行设计
此光学搭配防眩罩结构方可达到最佳效果

Vacuum
Aluminum
Plating
PC
真空镀铝

光源/光源	光源型号	SL-HD-AD-11A	SL-HD-AD-11B	SL-HD-AD-12A	SL-HD-AD-14A	SL-HD-AD-17A	SL-HD-AD-18A
	CXA15/CXB15						
	CXM-9						
	CLU028						
	CXA18						
	CLU038						
	1208						

CLU028
CLU038
CXA15
CXB15
CXA18
CXM-9
1208

SL-RF-AQ
MAGNETIC LINEAR REFLECTOR



黑光鳞甲设计理念
Black Scale Design

UGR<9



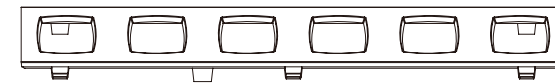
SL-RF-AQ-137A

Vacuum Aluminum Plating PC
真空镀铝

L:140.0mm W:22.3mm H:11.1mm



Code 型号	Typ.FWHM 标准角度	Typ.eff 标准效率
SL-RF-AQ-137A-RWW	63°*63°	70%



SL-RF-AI-140A



SL-RF-AQ-137A-RWW



SL-PL-AK-128A-X

2835 Package:
DURIS E 2835
3030 Package:
DURIS S5



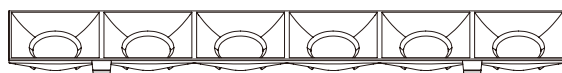
SL-RF-AQ-137B

Vacuum Aluminum Plating PC
真空镀铝

L:140.0mm W:18.9mm H:17.2mm



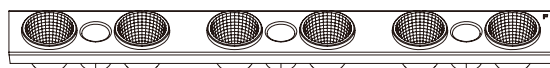
Code 型号	Typ.FWHM 标准角度	Typ.eff 标准效率
SL-RF-AQ-137B-M	26°	65%
SL-RF-AQ-137B-F	36°	66%
SL-RF-AQ-137B-W	47°	67%



SL-RF-AI-140B



SL-RF-AQ-137B-M



SL-RF-AQ-137B-F



SL-RF-AQ-137B-W



SL-PL-AK-128A-X

2835 Package:
DURIS E 2835
3030 Package:
DURIS S5